

32,430 MILES
(2 OF 2)



2007 FORD F750



2019 CHEV 3500HD



2019 CHEV 3500HD



2011 RAM 5500



2016 CHEV 3500HD



2016 CHEV 3500HD

(1 OF 2)



2007 CHEV 3500HD

(1 OF 3)



2015 CHEV 2500HD

(2 OF 3)



2015 CHEV 2500HD



TERMS & CONDITIONS

- 13% BUYERS PREMIUM ON ALL PURCHASES -

PAYMENT: FULL PAYMENT MUST BE MADE BY
5:00 PM - WEDNESDAY, SEPTEMBER 21ST.

REMOVAL: ALL ITEMS MUST BE REMOVED NO LATER THAN
4:00 PM - THURSDAY, SEPTEMBER 29TH

REMOVAL HOURS: 8:00 AM - 4:00 PM SEPTEMBER 21ST - 29TH
NO WEEKEND REMOVAL

WARRANTY DISCLAIMER: ALL SALES ARE FINAL.

ALL ITEMS ARE BEING SOLD "AS IS, WHERE IS,"

WITH ALL FAULTS AND WITHOUT ANY WARRANTIES AS TO MERCHANTABILITY.

**COMPLETE TERMS AND CONDITIONS OF SALE WILL BE
AVAILABLE AT THE TIME OF SALE.**



(3 OF 3)



2015 CHEV 2500HD

PUBLIC ONLINE AUCTION

6,050 MILES



2019 KENWORTH T440



James G. Murphy Co.

Commercial & Industrial Auctioneers
P.O. Box 82160, Kenmore, WA 98028

PRESORTED
FIRST CLASS MAIL
U.S. POSTAGE
PAID
SEATTLE, WA
PERMIT NO. 963



**REGISTER
TO BID @
MURPHYAUCTION.COM**



James G. Murphy Co.

Commercial & Industrial Auctioneers

PUBLIC ONLINE AUCTIONS

TOTEM ELECTRIC OF TACOMA, INC.

Electrical Contractor

Start Date: 9:00 AM | Tuesday - September 13

End Date: 9:00 AM | Tuesday - September 20

Preview: 8AM - 4PM | September 19

Location: 4310 70th Ave. E., Fife, WA 98424

1.800.426.3008 - 425.486.1246 - murphyauction.com



PUBLIC ONLINE AUCTION

TOTEM ELECTRIC OF TACOMA, INC.



Start Date: 9:00 AM | Tuesday - September 13

End Date: 9:00 AM | Tuesday - September 20

Preview: 8AM to 4PM | Monday - September 19

4310 70th Ave. E., Fife, WA 98424



(4) 2018 JOHN DEERE 35G



47,800 MILES
(1 OF 2)
2020 CHEV 3500HD



54,059 MILES
2019 CHEV SILVERADO
6500HD



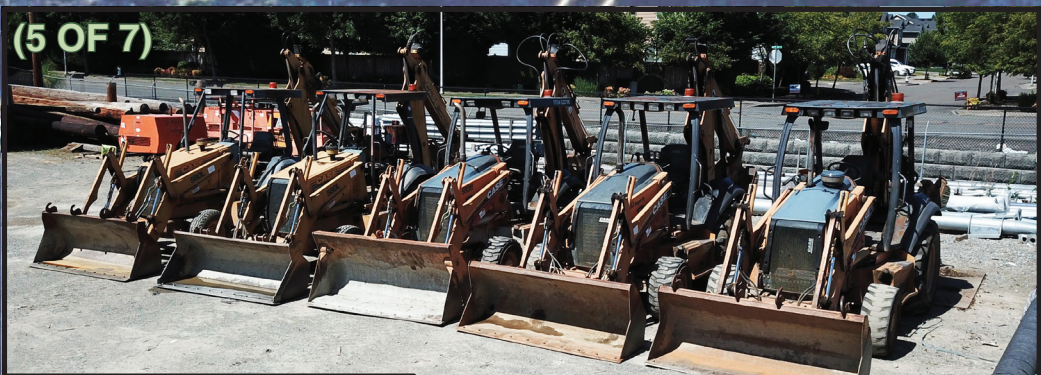
23,400 MILES
2009 INTERNATIONAL
DURASTAR



25,000 MILES
(2 OF 2)
2020 CHEV 3500HD



32,000 MILES
(1 OF 2)
2007 FORD F750



(5 OF 7)
CASE BACKHOES

(60+) HEAVY TRUCKS & HEAVY EQUIPMENT



2014 CHEV 2500HD



2006 INTERNATIONAL 4300



2002 INTERNATIONAL 2674



2000 MACK CH612



2013 CHEV 3500HD



2005 INTERNATIONAL 4300
SAW TRUCK



1996 FORD F800
SAW TRUCK



2000 KENWORTH T800B

UTILITY TRUCKS:

- (2) 2020 CHEV 3500HD 12' UTILITY TRUCKS, DURAMAX DIESEL, AUTO, AUX. FUEL TANK, RACK, S/N: 1GB3YSEY9LF349566 & 1GB3YSEY1LF349500, MILES: 47,800 & 25,000
- 2016 CHEV 3500HD 12' UTILITY TRUCK, DURAMAX DIESEL, AUTO, HONDA GENERATOR, AUX. FUEL TANK, RACK, S/N: 1GB3CYC80GF202045, MILES: 135,500
- (2) 2019 CHEV 3500HD 10' UTILITY TRUCKS, DURAMAX DIESEL, AUTO, HONDA GENERATOR, AUX. FUEL TANK, RACK, S/N: 1GB3KVCY0KF174371 & 1GB3KVCY1KF175786, MILES: 81,223
- 2016 CHEV 3500HD 8' UTILITY TRUCK, V8, GAS, AUTO, RACK, S/N: 1GC3CYCG7GZ309014
- 2014 CHEV 2500HD 8' UTILITY TRUCK, V8, AUTO, HONDA GENERATOR, AUX. FUEL TANK, S/N: 1GB0CVCG1EF164380, MILES: 129,000
- 2008 CHEV 2500HD UTILITY TRUCK, V8, GAS, AUTO, HONDA GENERATOR, AUX. FUEL TANK, 8' BED, S/N: 1GBHC24K68E141109, MILES: 229,000
- 2008 CHEV SILVERADO 8' UTILITY TRUCK, V8, AUTO, HONDA GENERATOR, AUX. FUEL TANK, S/N: 1GCEC1468Z312841, MILES: 223,000
- 2013 CHEV 3500HD 8' UTILITY TRUCK, V8, AUTO, HONDA GENERATOR, AUX. FUEL TANK, S/N: 1GB3CZCG6DF110155, MILES: 147,500

BUCKET TRUCKS:

- 2019 CHEV SILVERADO 6500HD BUCKET TRUCK, DURAMAX DIESEL, AUTO, 2019 ALTEC AT237S 37' 400 LB CAP. BUCKET TRUCK, AUX. FUEL, S/N: 1HTKHPVMXKH862901, MILES: 54,059
- 2011 RAM 5500 BUCKET TRUCK, CUMMINS DIESEL, AUTO, 2011 ETI ETC371H 37' 350 LB CAB BOOM, AUX. FUEL TANK, BOXES, S/N: 3D6WA7EL7BG591584, MILES: 207,000
- 2009 INTERNATIONAL DURASTAR S/A BUCKET TRUCK, MAXXFORCE DIESEL, 6 SPD, 2017 TEREX HI-RANGER XT55 55' 350 LB BUCKET, (4) STABILIZERS, CAB GUARD, S/N: 1HTMMAAM69H130475, MILES: 23,400
- 2006 INTERNATIONAL 4300 S/A BUCKET TRUCK, DT466 DIESEL, 6 SPD, 2005 ALTEC AM900 90' 700 LB CAP. BOOM, 18' STEEL DECK, (4) STABILIZERS, S/N: 1HTMMAAR26H144820, MILES: 33,000
- 2000 INTERNATIONAL 4700 S/A BUCKET TRUCK, V8 DIESEL, AUTO, 1999 HI-RANGER TPL40 40' 350 LB CAP. BOOM, 14' STEEL BED, S/N: 1HTSCABN2YH219430, MILES: 41,730
- 2002 FORD F450 S/A BUCKET TRUCK, POWERSTROKE DIESEL, AUTO, TEREX TL38P 38' 300 LB CAP. BOOM, 10' STEEL BED, S/N: 1FDXF46FX2ED12781
- 2000 FORD F550 S/A BUCKET TRUCK, POWERSTROKE DIESEL, AUTO, HOLAN H237 37' 350 LB CAP. BOOM, 12' WOOD DECK, S/N: 1FDAF56F7YEA45295, MILES: 50,000

DIGGER DERRICK TRUCKS:

- 2007 FORD F750 S/A DIGGER DERRICK TRUCK, CAT C7 DIESEL, AUTO, 2008 TEREX COMMANDER C4047 BOOM, POLE CLAMP, 12' STEEL BED, (4) STABILIZERS, S/N: 3FRXF75R87V514874, MILES: 32,430
- 2007 FORD F750 S/A DIGGER DERRICK TRUCK, CAT C7 DIESEL, 7 SPD, 2016 TEREX COMMANDER C4047 BOOM, POLE CLAMP, (4) STABILIZERS, 15' STEEL BED, S/N: 3FRXF75R17V418634, MILES: 32,000
- 1995 INTERNATIONAL 4900 T/A DIGGER DERRICK TRUCK, 530 DIESEL, AUTO, SIMON-TELELECT COMMANDER BOOM, POLE CLAMP, (4) STABILIZERS, 18' STEEL BED, S/N: 1HTSHADT7SH695645, MILES: 54,670

FLATBED TRUCKS:


- (2) 2007 CHEV 3500HD 12' FLATBED TRUCKS, V8, AUTO, S/N: 1GBJC34KX7E524315 & 1GBJC34KX07E509547, MILES: 192,500 & 180,700
- 2006 CHEV 3500 FLATBED TRUCK, V8, AUTO, 12' WOOD BED, LIFT GATE, S/N: 1GBJC34U76E185559, MILES: 161,000

DUMP TRUCKS:

- 2002 INTERNATIONAL 2674 T/A DUMP TRUCK, ISM350 DIESEL, AUTO, 14' STEEL BOX, TARP, SPRING BEAM SUSPENSION, DOUBLE FRAME, S/N: 1HTGLAHT52H503945, MILES: 76,400
- 2000 MACK CH612 T/A DUMP TRUCK, 6 CYL DIESEL, 8LL, 12' STEEL BOX, DROP AXLE, S/N: 1M1AA08Y7YW020296, MILES: 119,700
- 2001 FORD F750 S/A DUMP TRUCK, CUMMINS DIESEL, 6 SPD, 10' STEEL BOX, S/N: 3FDPPF75451MA20546, MILES: 103,800
- 2000 FREIGHTLINER FL70 S/A DUMP TRUCK, DIESEL, EATON FULLER 9 SPD, 10' STEEL BOX, S/N: 1FVWHJBA9YDH13316, MILES: 204,200
- 1999 FREIGHTLINER FLD S/A DUMP TRUCK, CUMMINS M11 DIESEL, 10 SPD, 10' STEEL BOX, S/N: 1FUW3MCAXXA25384, MILES: 230,000

SERVICE BODY TRUCKS:

- 2015 CHEV 2500HD EXTENDED CAB SERVICE BODY TRUCK, V8, GAS, AUTO, 8' BED, RACK, S/N: 1GC2CUEG0FZ527313, MILES: 160,200
- 2015 CHEV 2500HD 8' SERVICE BODY TRUCK, V8, GAS, AUTO, HONDA GENERATOR, AUX. FUEL TANK, S/N: 1GB0CUEG0FZ517439, MILES: 121,700
- 2015 CHEV 2500HD SERVICE BODY TRUCK, V8, GAS, AUTO, 8' BED, HONDA GENERATOR, S/N: 1GB0CUEG9FZ522221, MILES: 129,100
- 2014 CHEV 2500HD 8' SERVICE BODY TRUCK, V8, GAS, HONDA GENERATOR, AUX. FUEL TANK, S/N: 1GC0CVCG9EF183710, MILES: 147,700
- 2008 CHEV 2500HD 8' SERVICE BODY TRUCK, V8, AUTO, HONDA GENERATOR, AUX. FUEL TANK, S/N: 1GCHC24K88E173278, MILES: 234,000


James G. Murphy Co.
murphyauction.com
 425.486.1246


**REGISTER
TO BID @**
MURPHYAUCTION.COM

PUBLIC ONLINE AUCTION

2,616 HRS



2006 CASE 580M SERIES 2

3,630 HRS



2006 CASE 580

5,020 HRS



2004 CASE 580 SUPER M

6,000 HRS



1999 CASE 580L

5,060 HRS



1998 CASE 580L SERIES 2

3,700 HRS



2006 DAEWOO G50C-2

44,200 MILES



2019 CHEV 2500HD



2015 CHEV SILVERADO 1500

SAW TRUCKS:

2005 INTERNATIONAL 4300 20' S/A SAW TRUCK, DT466 DIESEL, AUTO, MORGAN VAN BOX, MAXON LIFT GATE, POLY TANK, PRESSURE WASHER, HONDA GENERATOR, EXTRACTOR UNIT, REELS, SUPPORT EQUIPMENT, S/N: 1HTMMAAL95H156313, MILES: 143,500

1996 FORD F800 14' S/A SAW TRUCK, CUMMINS DIESEL, AUTO, LIFT GATE, PRESSURE WASHER, REELS, POLY TANK, HONDA GENERATOR, DUAL HEAD EXTRACTOR, SUPPORT EQUIPMENT, S/N: 1FDNF80C8TVA16513, MILES: 143,500

FLATBED BOOM TRUCKS:

2019 KENWORTH T440 T/A BOOM TRUCK, PACCAR PX-9 DIESEL, FR014210C 10 SPD, MT40-14X4 40,000 REARS, 5:29 RATIO, 20,000 FRONT, HAULMAX SUSPENSION, DOUBLE FRAME, MANITEX 26101C 26 TON 29'-80' 4-SECTION BOOM, 29' SWING AWAY JIB, PAT DS85, (5) STABILIZERS, 22' STEEL BED, DUAL OPERATOR STATION, RACK, S/N: 3BKBLJ0X6KF289284, MILES: 6,050

1997 FORD F800 10' S/A FLATBED BOOM TRUCK, CUMMINS 5.9L DIESEL, 6 SPD, NATIONAL 400A BOOM, 22'-56' 3-SECTION BOOM, 18' BED, ANTI TWO-BLOCK, DUAL OPERATOR STATION, (4) OUTRIGGERS, S/N: 1FDFPF80C6VVA04517, MILES: 76,000

TRUCK TRACTOR:

2000 KENWORTH T800B T/A TRUCK TRACTOR, CAT C12 DIESEL, 10 SPD, 40,000 REARS, 4:11 RATIO, HEADACHE RACK, S/N: 1XKDDU9X7YR865590

STAKEBED TRUCK:

2003 CHEV C4500 15' STAKEBED TRUCK, DURAMAX DIESEL, AUTO, SIDES, LIFT GATE, S/N: 1GBE4E1173F511385

BACKHOES:

2006 CASE 580M SERIES 2 4X4 LOADER BACKHOE, 4-IN-1 BUCKET, EXTENDAHOE, AUX. HYDRAULICS, CANOPY, S/N: N6C402363, HRS: 2,616

2006 CASE 580 SUPER M SERIES 2 4X4 LOADER BACKHOE, EXTENDAHOE, CANOPY, S/N: N6C411696, HRS: 3,630

2006 CASE M TURBO SERIES II LOADER BACKHOE, GP BUCKET, EXTENDAHOE, CANOPY, S/N: N60402414, HRS: 3,111

2005 CASE SUPER M SERIES II LOADER BACKHOE, GP BUCKET, EXTENDAHOE, CANOPY, S/N: N5C387018, HRS: 3,954

2004 CASE 580 SUPER M 4X4 LOADER BACKHOE, EXTENDAHOE, CANOPY, AUX. HYDRAULICS, HOE PACK, S/N: JYG0377330, HRS: 5,020

1999 CASE 580L LOADER BACKHOE, EXTENDAHOE, CANOPY, S/N: JYG0244800, HRS: 6,000

1998 CASE 580L SERIES 2 LOADER BACKHOE, EXTENDAHOE, AUX. HYDRAULICS, HOE PACK, CANOPY, S/N: JYG0239571, HRS: 5,060

SCISSOR LIFT:

GENIE GS-1530 15' ELECTRIC SCISSOR LIFT, HRS: 405

EXCAVATORS:

(4) **2018 JOHN DEERE 35G** MINI EXCAVATORS, QUICK CONNECT BUCKET, ANGLE BLADE, SWING BOOM, HYDRAULIC THUMB, RUBBER TRACKS, CANOPY, S/N: 1FF035GXAJK2827851, 1FF035GXEJK282581, 1FF035GXLJK282786 & 1FF035GXHJK282580, HRS: 1,480, 1,647 & 2,125

FORKLIFTS:

2006 DAEWOO G50C-2 9,200 LB CAP. CUSHION TIRED FORKLIFT, 180" 3-STAGE MAST, SIDE SHIFT, FORK POSITIONERS, PROPANE, S/N: KA-00090, HRS: 3,700

2002 MITSUBISHI FGC20K 3,700 LB CAP. SOLID TIRED FORKLIFT, 189" 3-STAGE MAST, SIDE SHIFT, PROPANE, S/N: AF82C-01879, HRS: 10,500

PICKUP TRUCKS:

2019 CHEV 2500HD 4X4 EXTENDED CAB PICKUP TRUCK, V8, GAS, AUTO, 8' BED, HEADACHE RACK, TRUCK BOX, S/N: 2GC2KSEGXK1146658, MILES: 44,200

2007 CHEV 2500HD EXTENDED CAB PICKUP TRUCK, V8, GAS, AUTO, CAB GUARD, TOOLBOX, S/N: 1GCHC29U97E200240, MILES: 310,000

2012 CHEV 2500HD EXTENDED CAB PICKUP TRUCK, V8, AUTO, 8' BED TRUCK BOX, S/N: 1GC2CVCG9CZ128937

2011 CHEV 2500HD EXTENDED CAB PICKUP TRUCK, V8, AUTO, TRUCK BOXES, 8' BED, HEADACHE RACK, S/N: 1GC2CVG3BZ453159, MILES: 163,000

2015 CHEV SILVERADO 1500 PICKUP TRUCK, GAS, AUTO, 8' BED, TRUCK BOX, S/N: 1GCNCPEH7FZ374016

(2) **2012 CHEV SILVERADO 1500** PICKUP TRUCKS, GAS, AUTO, 8' BED, TRUCK BOX, S/N: 1GCNCPA3CZ341402 & 1GCNCPExXCZ275872, MILES: 127,400 & 128,900

(2) **2008 TOYOTA TACOMA** EXTENDED CAB PICKUP TRUCKS, GAS, AUTO, S/N: 5TETX22N98Z563024 & 5TETX22N88Z537773, MILES: 192,000

2001 FORD RANGER PICKUP TRUCK, 4 CYL, 5 SPD, FRONT TOW PACKAGE, S/N: 1FTYR10C21PA64543, MILES: 102,200

TRAILERS & TRAILER MOUNTED EQUIPMENT:

2019 OLYMPIC OM14-2E 80"X16' T/A TILTBED EQUIPMENT TRAILER, S/N: 1H9TF1827KT726097

(2) **2018 OLYMPIC OM12-2E** 6'8"X16' T/A TILTBED EQUIPMENT TRAILERS, S/N: 1H9TE1825JT726467 & 1H9TF1823JT726466

SHOP BUILT 6'X13' S/A TILTBED EQUIPMENT TRAILER

1991 TRAILMAX TD-18-FBR 8'6"X19' T/A BEAVERTAIL EQUIPMENT TRAILER, RAMPS, S/N: 1G9FS3125MA065194

1988 EAGER BEAVER 8'X16' T/A BEAVERTAIL EQUIPMENT TRAILER, RAMPS, 235/75R17.5, S/N: 1120BD205JA080036

2008 TOWMASTER T20 8'6"X20' T/A BEAVERTAIL EQUIPMENT TRAILER, RAMPS, 235X85R16, S/N: 4K9FT20258L163615

1993 CZ ENGINEERING CZ18KT 8'X20' BEAVERTAIL EQUIPMENT TRAILER, RAMPS, S/N: 4CZTB3028P123G231



2019 OLYMPIC OM14-2E



2008 TOWMASTER T20



2016 BENDPAK XPR-12CL



2008 SULLAIR 225H



2000 VERMEER E550



ASSORTED CONCRETE SAWS

TRAILMOBILE 40' T/A ALUMINUM VAN TRAILER, S/N: L91225
STRICK 28' S/A ALUMINUM VAN TRAILER
8'X28' T/A JOBSITE TRAILER
UTILITY 45' T/A VAN TRAILER
ASSORTED ELECTRICAL CONTRACTOR EQUIPMENT:
2009 NORTON CLIPPER N6130 WALK BEHIND CONCRETE SAW,
 DEUTZ 3 CYL DIESEL, S/N: 07091074
2009 WOLVERINE W-60CC WALK BEHIND CONCRETE CIRCLE SAW,
 KUBOTA 4 CYL DIESEL, HRS: 85
2008 MECO 44DWC WALK BEHIND CONCRETE CIRCLE SAW,
 KUBOTA 4 CYL DIESEL, S/N: 9995
2002 MECO M60DCC WALK BEHIND CONCRETE SAW, DEUTZ 3 CYL
 DIESEL, S/N: 5040, HRS: 1,199
2002 MECO 37WC WALK BEHIND CONCRETE SAW, 4 CYL GAS,
 HRS: 1,663
2000 MECO M60DCC WALK BEHIND CIRCLE CONCRETE SAW,
 DEUTZ 3 CYL, S/N: 5435, HRS: 962
2016 BENDPAK XPR-12CL 12,000 LB CAP., 2-POST AUTOMOTIVE LIFT,
 BUMP GUARD, SINGLE PHASE
GREENLEE 6805 ULTRA TUGGER W/JOBSITE BOX & ACCESSORIES
GREENLEE 2-1/2"-4" HYDRAULIC BENDER W/ACCESSORIES
GREENLEE 854DX 1/2"-2" ELECTRIC BENDER
 (35) SECTIONS OF PALLET RACKING
 ALUMINUM CONSTRUCTION SIGN INVENTORY
(2) RIDGID 1224 PIPE MACHINES
 ASSORTED 12"-48" AUGERS
 ASSORTED BACKHOE BUCKETS
 2"-6" MOLES
 TRUCK & EQUIPMENT PARTS INVENTORY
 (5) 20' CONTAINERS
 (2) 36' STEEL CASINGS
 (11) 4'X6'X1" STEEL PLATES
 ASSORTED TEMP POLE INVENTORY
(8) RIDGID 300 MACHINES
INGERSOLL RAND COMPRESSOR
DAYTON DRILL PRESS
RIDGID 700 MACHINES
 HOT WATER PRESSURE WASHER, NUT/BOLT BINS, PARTS CLEANER,
 CARTS, JUMPING JACK, LUBRICANTS, TRI-STANDS, HOT BOXES,
 REEL PULLERS, CORDS, ASSORTED BENDERS, BENDER SHOES,
 HYDRAULIC UNITS PULLERS, REELS, ASSORTED BENDING
 ACCESSORIES, EXTENSION & STEP LADDERS, FALL PROTECTION,
 PIPE MACHINES, FUEL CANS, TRUCK BOXES, FUEL TANKS, TRAFFIC
 BARRELS, CONES, SIGNS, STANDS, CANDLE STICKS, SAFETY
 SUPPLIES, CREEPER, CHOP SAW WITH IN/OUTFEED TABLE, JACKS,
 STEEL TABLE, OXY/ACETYLENE SETS, SHOP PRESS, POWER TOOLS,
 PUNCHES, PORTAPOWERS, PIPE WRENCHES, PIG TAILS, SOCKETS,
 WRENCHES, KNOCK OUTS, 1/2-2" DIES, TEMP LIGHTS, REAMERS,
 STRING LIGHTS, POWER TOOLS, SPIDER BOXES, ELBOWS, BREAKERS,
 HANGERS, COUPLERS, CONNECTORS, BUSHINGS, NUTS & ASSORTED
 ELECTRICAL SUPPLIES, ENCLOSURES, STRAPS, JOBOXES, FITTINGS,
 BOXES, BRACKETS, PLUGS, CONDUIT, DISCONNECTS, GROUND RODS,
 ALL THREAD & ASSORTED ELECTRICAL INVENTORY, REEL CARTS,
 STANDS, FLAT CARTS, SONOTUBES, FALL PROTECTION, HOT BOXES,
 SPILL KITS, FIRE EXTINGUISHERS, FIRST AID KITS, FLAMMABLE
 CABINETS, TEMP SIGNALS, SIGNAL PARTS, MOUNTS, CONTROLLERS,
 BRACKETS, (6) GENERATOR SETS, (3) PUMPS, JUMPING JACK,
 RIGGING, AIR HOSE, AUGER, AIR COMPRESSORS, SPEED SHORING,
 WATER HOSE AND MUCH MORE!

1994 ECONOLINE MP423DE 8'X18' T/A BEAVERTAIL EQUIPMENT TRAILER,
 RAMPS, 8X14.5, S/N: 42EDPHE41R1000966
1988 TRAIL KING TK18-2400 8'X19' T/A BEAVERTAIL EQUIPMENT TRAILER,
 RAMPS, S/N: 1TKC0242XJM120783
1989 TRAIL KING TK10U 6'8"X14' S/A BEAVERTAIL EQUIPMENT TRAILER,
 RAMPS, S/N: 1TKU0162XKM074546
1992 ECONOLINE P423D 8'X18' T/A BEAVERTAIL EQUIPMENT TRAILER,
 RAMPS, S/N: 42EDPH442N1000096
2012 BLACKHAWK BHFB714TA5 6'10"X14' FLATBED EQUIPMENT TRAILER,
 RAMPS, S/N: 184BU1429CC011773
6'4"X16' T/A FLATBED TRAILER
2010 LOADTRAILER 7'X18' T/A EQUIPMENT TRAILER, NO RAMPS,
 S/N:4ZECH1825A1074801
1997 CONTRAIL C-10 6'6"X16' T/A EQUIPMENT TRAILER, RAMPS
TIMPLE 40' T/A HIGH BOY TRAILER, OUTSIDE RAILS, SPRING
 SUSPENSION, WOOD DECK
CUSTOM BUILT S/A PICKUP BED REEL TRAILER, ELECTRIC BRAKES,
 S/N: WA89156850
CUSTOM BUILT T/A SIGN TRANSPORT TRAILER
(3) CUSTOM BUILT S/A PICKUP BED REEL TRAILERS, ELECTRIC BRAKES,
 S/N: WA89156844, WA7884848 & WA89156851
2009 RICE S/A EXTENDING POLE TRAILER, S/N: 4RWUF36109N040555
1986 S/A POLE TRAILER, S/N: WA7810758
CLEASBY S/A TAR POT
S/A TAR POT W/PROPANE TANK
1975 SHOP BUILT 6'X12' T/A WATER TRAILER, POLY TANK, PUMP, REEL
(3) 2008 SULLAIR 225H 225 CFM PORTABLE AIR COMPRESSORS,
 CAT C3.4 DIESEL, S/N: 4WOAS21138MA08014, 4WOAS21108MA08004 &
 200804080126, HRS: 140, 760, 360
(2) SULLIVAN D210QV 210 CFM PORTABLE AIR COMPRESSORS,
 JOHN DEERE 4 CYL DIESEL, S/N: 17064A, 17066A HRS: 1,887, 1,825
SULLIVAN D210QH 210 CFM PORTABLE AIR COMPRESSOR, JOHN DEERE
 DIESEL, S/N: 21641, HRS: 1,402
SULLIVAN D2100QH6JD TRAILER MOUNTED AIR COMPRESSOR, JOHN
 DEERE DIESEL, S/N: 18162A, HRS: 832
(2) AMIDA PORTABLE SOLAR POWERED AIR BOARDS, S/N: 0102-68829 &
 0101-68745
2000 VERMEER E550 EVACUATOR T/A VAC TRAILER, 550 GALLON STEEL
 TANK, KOHLER 2 CYL GAS, 220 GALLON POLY TANK,
 S/N: 1VRT2029241000140
EVERGREEN 8'X24' T/A JOBSITE TRAILER
(2) 8'X24' S/A JOBSITE TRAILERS
EVERGREEN 8'X28' S/A JOBSITE TRAILER
1978 STRICK 40' T/A ALUMINUM VAN TRAILER
1977 TRAILMOBILE 40' T/A ALUMINUM VAN TRAILER, S/N: F64990
EVERGREEN 8'X28' S/A JOBSITE TRAILER, S/N: 996132