



James G. Murphy Co.
425.486.1246 - murphyauction.com



PREMIER VL-45-64



ASSORTED MOTORS



DURAND RAUTE



COE/PREMIER



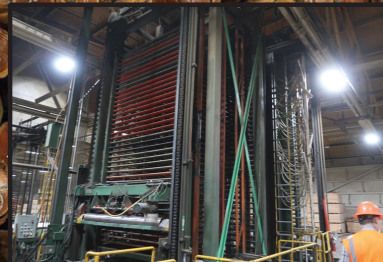
DURAND RAUTE



COE/USNR



MATTISON



SUPERIOR/SPARTEK



COE/CUSTOM

PUBLIC ONLINE AUCTION

SDS PLYWOOD MILL - PLYWOOD MILL & ROLLING STOCK

PLYWOOD MILL CLOSURE



SDS Lumber LLC

Start Date: 10AM | Wednesday - July 30

End Date: 10AM | Wednesday - August 6

Preview: 8AM to 4PM | Tuesday - August 5 (Also By Appointment)

Location: 123 Industrial Road, Bingen, WA 98605

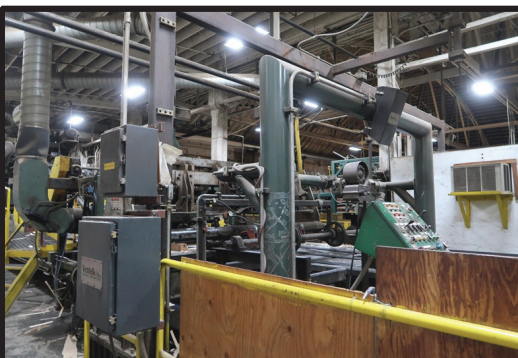
Go To murphyauction.com For More Information!



SCAN HERE
FOR FULL
PREVIEW



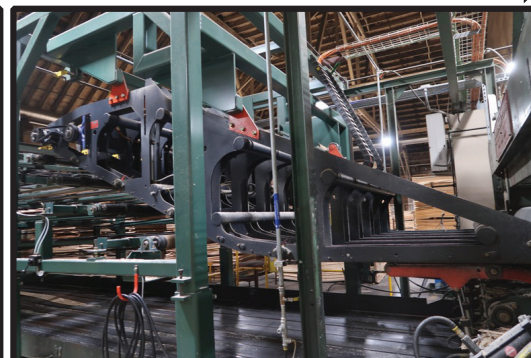
James G. Murphy
425.486.1246
murphyauction.com



VENTEK
LINE SENSOR GREEN VENEER SCANNER



2018 VENTEK NV4G
GREEN VENEER OPTIMIZATION SYSTEM



2018 USNR
MULTI-POINT VENEER
SHEET DIVERTER SYSTEM

SHEET DIVERTER SYSTEM:

2018 USNR MULTI-POINT VENEER SHEET DIVERTER SYSTEM,
ALL CONTROLS, ELECTRICS & SUPPORT EQUIPMENT

OPTIMIZATION SYSTEM:

2018 VENTEK NV4G GREEN VENEER OPTIMIZATION SYSTEM W/FEED
THROUGH TRANSFER, ALL CONTROLS, ELECTRICS & SUPPORT
EQUIPMENT

STACKERS:

DURAND RAUTE 4'X4' 3-BIN GREEN STACKER, SCISSORS, ROLLS, INFEED
BELTS, HAND PULL BELTS, ALL CONTROLS, ELECTRICS & SUPPORT
EQUIPMENT

DURAND RAUTE 4'X8' 3-BIN GREEN STACKER W/(1) RANDOM WIDTH BIN,
SCISSORS, ROLLS, INFEED BELTS, OUTFEED PULL BELTS,
ALL CONTROLS, ELECTRICS & SUPPORT EQUIPMENT

DURAND 12-BIN DRY VENEER STACKER W/INFEED TRANSFERS,
SCISSORS, ROLLS, OUTFEED TRANSFERS, ALL CONTROLS, ELECTRICS &
SUPPORT EQUIPMENT

VENEER LATHES:

PREMIER VL-45-64 8'X38" 1,100 FPM VENEER LATHE W/CUSTOM
CHARGER, 2018 UPGRADED ELITE AUTO SCAN SYSTEM, ROLLER NOSE
BAR, BALL SCREW CARRIAGE, COE BACK UP ROLL, LOG LADDER
INFEED, CORE CONVEYOR

COE/PREMIER 4' VENEER LATHE W/X-Y CHARGER, INFEED TRANSFERS,
ALL CONTROLS, ELECTRICS & SUPPORT EQUIPMENT, TWIN
NON-SHIFTING 84" BUCK SAW LINE W/FEED THROUGH ROLLCASE,
INFEED JACK LADDER TRANSFER & LOG TRANSFER, ALL DRIVES

VENEER CHIPPERS:

(2) BLACK CLAWSON 78" 6-KNIFE VENEER CHIPPERS W/FEED ROLLS,
INFEED CONVEYORS, METAL DETECTORS, ALL CONTROLS, ELECTRICS &
SUPPORT EQUIPMENT

LATHE LINES:

4' LATHE LINE OUTFEED TRAYS & DRIVES W/TRASH BELT
8' LATHE LINE, 2-TRAY BELTS W/2018 DRIVE UPDATES, TRASH BELT,
ALL CONTROLS & ELECTRICS

VENEER SCANNER:

VENTEK LINE SENSOR GREEN VENEER SCANNER W/FEED THROUGH
TABLE TO ELLIOTT BAY CLIPPER, SHEET DIVERTER, ALL CONTROLS,
ELECTRICS & SUPPORT EQUIPMENT

2021 VENTEK GS2000 DRY VENEER SCANNER W/FEED THROUGH
SYSTEM, ALL CONTROLS, ELECTRICS & SUPPORT EQUIPMENT

LAY UP LINE:

COE/USNR 5-PLY 4'X8' LAY UP LINE W/(4) GLUE SPRAY STATIONS
W/ALL SHEET & CORE STATIONS, SHEET ELEVATOR STATIONS,
FORK ACCUMULATORS, ROLLCASES & BELTS, GLUE & RESIN TANKS &
EQUIPMENT, FLYING SAW, PANEL STACKER, ALL CONTROLS, ELECTRICS
& SUPPORT EQUIPMENT

VENEER CLIPPER:

DURAND RAUTE 8' VENEER CLIPPER W/(3) 2018 USNR UPDATED SERVO
DRIVES & VENEER HOLD BACK SYSTEM, ALL CONTROLS, ELECTRICS &
SUPPORT EQUIPMENT

BAGHOUSE SYSTEM:

DUAL BIN CHIP BIN W/CROSS FEED & SUPPORT CONVEYORS, FEEDER,
BLOWER

STEAM FIRED DRYERS:

COE/CUSTOM 6-TRAY STEAM FIRED DRYER W/(15) DOORS, (2) HEAT
ZONES, (1) COOL DOWN ZONE, MANUAL LOAD & UNLOAD STATIONS,
METRIGUARD MOISTURE DETECTOR W/FEED THROUGH TRANSFER,
ALL CONTROLS, ELECTRICS & SUPPORT EQUIPMENT

STEAM FIRED DRYERS (CONTINUED):

COE/USNR JET 4-TRAY STEAM FIRED DRYER W/(16) DOORS, (3) HEAT
ZONES, (1) COOL DOWN ZONE, SWEED FEEDER, MANUAL OUTFEED,
VACUUM RE-ENTRY SYSTEM, METRIGUARD SYSTEM, USNR SEQUOIA
MOISTURE METER, ALL CONTROLS, ELECTRICS & SUPPORT EQUIPMENT

SAWS:

MATTISON STRAIGHT LINE RIP SAW & CUSTOM BUILT STRIP SAW
SWEED SIZING SAW W/(2) SAWS, IN & FEED THROUGH, ATTACHED
ELECTRICS
GLOBE T-111 SAW

HOT PRESSES:

FJELLMAN 25-OPENING 570-TON HOT PRESS, S/N:858 W/572-TON
PRE-PRESS, S/N:554, MANUAL FEED & UNLOAD, INFEED & OUTFEEDS,
ALL CONTROLS, ELECTRICS & SUPPORT EQUIPMENT
SUPERIOR/SPARTEK 40-OPENING HOT PRESS W/PRE-PRESS, DURAND
CHARGER & UNLOADER, INFEEDS & OUTFEEDS, ALL CONTROLS,
ELECTRICS & SUPPORT EQUIPMENT

FJELLMAN 25-OPENING 570-TON HOT PRESS W/PRE-PRESS, MANUAL
FEED & UNLOAD, INFEED & OUTFEED, ALL CONTROLS, ELECTRICS &
SUPPORT EQUIPMENT

PANEL SIZING LINE:

PANEL SIZING LINE W/BURELBACH PANEL FEEDER & INFEED, AUTOMATIC
LABELER, GLOBE SKINNER & EQUALIZER SAWS, S/N:16A174, INFEEDS
& OUTFEEDS, KIMWOOD PANEL TURNER, KIMWOOD 4-BIN STACKER,
SIGNODE BANDING STATION

SANDING LINE:

KIMWOOD SANDING LINE W/KIMWOOD 6-HEAD SANDER, S/N:50128,
INFEED VACUUM PANEL FEEDER, OUTFEED BELT, GRADE STAMP,
KIMWOOD 4'X10' 4-BIN PANEL STACKER, ALL CONTROLS, ELECTRICS &
SUPPORT EQUIPMENT

ELECTRICS:

2018 ELITE LATHE XY PLC CABINET, (1) LOGIX 5581E, (3) ETHER NET/IP,
(8) 2 AXIS SERVO/SS1, (1) 2 AXIS SERVO, (2) DC OUTPUT, (2) AC INPUT,
(2) AC OUTPUT, (1) RELAY OUTPUT & (3) ANALOG INPUT CARDS, 2 DOOR
CABINET

2018 ELITE LATHE MOTION PLC, (1) LOGIX 5581 TM, (1) SERCOS
INTERFACE, (2) ETHERNET/IP, (4) 2 AXIS SERVO/SSI, (1) ACCESS SERVO,
(1) AC INPUT, (1) AC OUTPUT, (3) DC INPUT, (1) ANALOG INPUT,
(1) 1756-0F4 CARDS W/ 2 DOOR CABINET

2018 ELITE LATHE SPINDLE DRIVE CABINET, ALLEN BRADLEY POWER
FLEX DC, ABB SPECTRUM EHDB-960 SOLID STATE DRIVE CONTACTOR,
2 DOOR CABINET

2018 ELITE CARRIAGE DRIVE, ALLEN BRADLEY KINETIX 7000 SERVO
DRIVE, GUARD MOTION 2099-SM11-S, BURITON M3575T BRAKING
TRANSISTOR, 2 DOOR CABINET

ALLEN BRADLEY CENTERLINE 2100 9 SECTION, 20 TABS, LIGHTING
PANEL, 30 SLOT, STEP DOWN TRANSFORMER 10 ALLEN BRADLEY
POWER FLEX 755, VARI DRIVES

ELITE AUTOMATION DIVERTER DRIVE CABINET W/(5) AB KINETIX 5700
SERVO DRIVES

ELITE AUTOMATION CLIPPER DRIVES CABINET W/AB KINETIX 5700 SERVO
DRIVES

ELITE AUTOMATION DIVERTER & STRIP TRAY PLC, (1) LOGIX
5581E, (4) ETHER NET/IP, (1) DC INPUT, (2) DC OUTPUT,
(2) AC INPUT, (2) AC OUTPUT & (1) ANALOG INPUT CARDS,
(2) DOOR CABINET

ELITE AUTOMATION CLIPPER PLC, (1) LOGIX 5581E,
(3) ETHERNET/IP, (1) AC INPUT, (1) AC OUTPUT, (1) DC INPUT
& (1) DC OUTPUT CARDS, (2) DOOR CABINET



SCAN HERE
FOR FULL
PREVIEW



GLOBE T-111



KIMWOOD



SWEED



GLOBE

ROLLING STOCK:

2008 HYSTER S80FTSCB 7,000 LB HRT FORKLIFT, 173" 3-STAGE MAST, LUMBER FORKS, SIDE SHIFT, PROPANE, MONOTROL, HOUR METER READS: 26,379, S/N: G004V03857F

HYSTER 80 8,000 LB HRT FORKLIFT, 173" 3-STAGE MAST, SIDE SHIFT, LUMBER FORKS, PROPANE, MONOTROL, HOUR METER READS: 1,631

2012 HYSTER S100FT-BCS 9,400 LB HRT FORKLIFT, 163" 3-STAGE MAST, SIDE SHIFT, FINGER TIP CONTROLS, PROPANE, MONOTROL, LUMBER FORKS, HOUR METER READS: 11,816, S/N: H0V4V01622K

1989 HYSTER S60B 6,000 LB HRT FORKLIFT, 2-STAGE MAST, LUMBER FORKS, PROPANE, SIDE SHIFT, HOUR METER READS: 6,419, S/N: B4L3874K

2001 HYSTER S80E 8,000 LB HRT FORKLIFT, 2-STAGE MAST, LUMBER FORKS, PROPANE, SIDE SHIFT, S/N: C004D3432Y

HYSTER 80 8,000LB HRT FORKLIFT, 2-STAGE MAST, SIDE SHIFT, LUMBER FORKS, PROPANE, MONOTROL, HOUR METER READS: 5,187

1996 HYSTER S60B 5,200 LB HRT FORKLIFT, 146" 2-STAGE MAST, SIDE SHIFT, LUMBER FORKS, PROPANE, HOUR METER READS: 5,144, S/N: 84D4753T

2007 HYSTER S80FT-BCS 7,300 LB HRT FORKLIFT, 173" 3-STAGE MAST, SIDE SHIFT, LUMBER FORKS, PROPANE, MONOTROL, HOUR METER READS: 1,064, S/N: G004V02467E

2007 HYSTER S80FT-BCS 5,400 LB HRT FORKLIFT, 173" 3-STAGE MAST, SIDE SHIFT, LUMBER FORKS, PROPANE, MONOTROL, S/N: G004V0270E

HYSTER 80 8,000LB HRT FORKLIFT, 3-STAGE MAST, SIDE SHIFT, PROPANE, MONOTROL, HOUR METER READS: 7,919

CATERPILLAR V200R DUAL WHEEL 20,000 LB FORKLIFT, 218" 2-STAGE MAST, LUMBER FORKS, SIDE SHIFT, HOUR METER READS: 62,305, S/N: 68Y896

MISC. EQUIPMENT:

JITNEY SHOP W/GENERAL MAINTENANCE TOOLS & SUPPORT EQUIPMENT
HYDRAULIC OPERATED C-FRAME LOAD TURNER
GLOBE BLO-HOG W/DRIVE, INFEED & OUTFEED CONVEYORS W/METAL DETECTOR
ELECTRICAL STORAGE AREA W/LARGE SUPPLY OF MOTORS, REDUCERS, VFD'S, STARTERS, PLC'S, STATORS, PIPE THREADER & BENDERS, CONDUIT, GENERAL ELECTRICAL SWITCHGEAR & SUPPORT EQUIPMENT **AND MUCH MORE!**



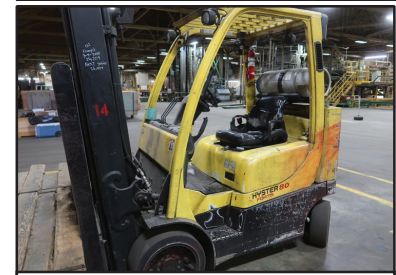
HYDRAULIC OPERATED C-FRAME LOAD TURNER



PANEL SIZING LINE



LARGE ASSORTMENT OF ELECTRICS



2008 HYSTER S80FTSCB



HYSTER 80



2007 HYSTER S80FT-BCD



2007 HYSTER S80FT-BCD



2001 HYSTER S80E



HYSTER 80



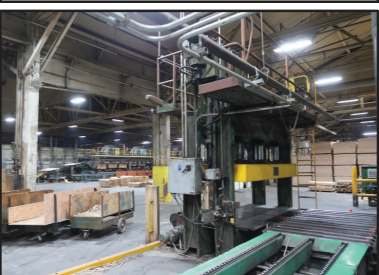
2012 HYSTER S100FT-BCS



CATERPILLAR V200R



FJELLMAN



FJELLMAN

TERMS & CONDITIONS

- 13% BUYERS PREMIUM ON ALL PURCHASES -
PAYMENT: FULL PAYMENT MUST BE MADE BY
5:00 PM - WEDNESDAY, AUGUST 6TH.
REMOVAL: ALL ITEMS MUST BE REMOVED NO LATER THAN
4:00 PM - FRIDAY, AUGUST 15TH *NO WEEKEND REMOVAL*
REMOVAL HOURS: 8:00 AM – 4:00 AUGUST 7TH THRU 15TH
WARRANTY DISCLAIMER: ALL SALES ARE FINAL.
ALL ITEMS ARE BEING SOLD "AS IS, WHERE IS," WITH ALL FAULTS AND
WITHOUT ANY WARRANTIES AS TO MERCHANTABILITY.
COMPLETE TERMS AND CONDITIONS OF SALE WILL BE
AVAILABLE AT THE TIME OF SALE.



DURAND RAUTE
4'X4' 3-BIN GREEN STACKER



James G. Murphy Co.

Commercial & Industrial Auctioneers
P.O. Box 1127, Marysville, WA 98270

PRESORTED
FIRST CLASS MAIL
U.S. POSTAGE
PAID
SEATTLE, WA
PERMIT NO. 963



**REGISTER
TO BID @
MURPHYAUCTION.COM**

PUBLIC ONLINE AUCTION

SDS PLYWOOD MILL - PLYWOOD MILL & ROLLING STOCK PLYWOOD MILL CLOSURE

SDS Lumber LLC

Start Date: 10AM | Wednesday - July 30

End Date: 10AM | Wednesday - August 6

Preview: 8AM to 4PM | Tuesday - August 5 (Also By Appointment)

Location: 123 Industrial Road, Bingen, WA 98605

Go To murphyauction.com For More Information!



SCAN HERE
FOR FULL
PREVIEW



James G. Murphy
425.486.1246
murphyauction.com



DURAND
12-BIN DRY VENEER STACKER



(2) BLACK CLAWSON
78" 6-KNIFE VENEER CHIPPERS



2021 VENTEK GS2000
DRY VENEER SCANNER