



James G. Murphy Co.



MURPHYAUCTION.COM - 425.486.1246

PUBLIC AUCTION

CIPP COLVILLE INDIAN PRECISION PINE



Start Date: 9:00 AM | Wednesday - September 30

End Date: 9:00 AM | Wednesday - October 7

Preview: 8AM to 4PM | October 6 Or By Appointment

373 Omak Riverside Eastside Rd., Omak, WA 98841

Sawmill, Planer Mill & Rolling Stock

MURPHYAUCTION.COM
4 2 5 - 4 8 6 - 1 2 4 6



2008 CAT 988H



JEFFERY 56WBSS



(2) LINDEN STYLE



ALBANY



CAT 322CFM

>>> BID ONLINE - NO MINIMUMS - NO RESERVES <<<

1.800.426.3008 - 425.486.1246 - MURPHYAUCTION.COM

AUCTION: SEPT. 30 - OCT. 7



DEBARKER:

1994 NICHOLSON A5A 27" LH 6-ARM HIGH SPEED RING DEBARKER W/AIR SEAL RING, WESTINGHOUSE 100 HP/1,180 RPM RING DRIVE MOTOR, LEESON 40 HP M MOTOR TO SM CYCLO 11:1 REDUCER FEED DRIVE, (3) INFEED & (3) OUTFEED ROLLS, LARGE LOG BYPASS, CAB & CONTROLS, SAS HYDRAULIC UNIT W/(2) 50 HP MOTORS, SPARE PARTS, S/N: 9432

NICHOLSON A2 44" RH 5-ARM RING DEBARKER W/US 100 HP/1,180 RPM RING DRIVE MOTOR, 50 HP/1,175 RPM MOTOR TO FALK SQUARE BOX REDUCER FEED DRIVE, ALLIGATOR INFEED & OUTFEED CHAINS, HOURGLASS INFEED & OUTFEED ROLLS & HOLD DOWNS, LARGE LOG BYPASS, CONTROLS & ELECTRICS, 90 HP & 25 HP HYDRAULIC UNITS

WHOLE LOG CUT OFF SAWS - STEP FEEDERS:

L&M 72" INSERT TOOTH WHOLE LOG CUT OFF SAW W/75 HP/1,180 RPM MOTOR, LOG CRADLES & HOLD DOWNS, APPROX 50" - 6"X12" BOX CHAIN INFEED LOG HAUL, APPROX 20' - 6"X12" OUTFEED LOG HAUL W/(6) LOG STOPS, 5-ARM LOG KICKER, (2) MOTORS TO SKK DRIVES, (2) SPARE SAWS

L&M STYLE 6' BAR SAW W/20 HP MOTOR, APPROX 13' 2-STRAND H-CHAIN INFEED & APPROX 22' 2-STRAND H-CHAIN OUTFEED W/(5) LOG STOPS & (3) KICKER ARMS, APPROX 30' POWERED OUTFEED HOURGLASS ROLLCASE W/(10) 44" ROLLS, (3) MOTORS TO SKK DRIVES

(2) LINDEN STYLE HYDRAULIC OPERATED 16' 4-STEP LOG FEEDERS W/SAS HYDRAULIC UNIT W/(2) 50 HP MOTORS

LOG LOADER:

SERCO 1000 HYDRAULIC OPERATED PEDESTAL MOUNT LOG LOADER W/40" SWIVEL ROTARY GRAPPLES, CONTROLS (SHARED HYDRAULICS)

HEAD RIG - RESAWS:

ALBANY 6' RH SINGLE CUT VERTICAL BAND HEAD RIG W/TOSHIBA 250 HP/1,180 RPM MOTOR, SLAB BED W/HYDRAULIC ROLL, AIR STRAIN, GUIDE & 60" OUTFEED ROLLCASE, CAB & CONTROLS

ALBANY 46701 6' LH TWIN BAND TEMPOSONIC POSITIONED VERTICAL BAND RESAW W/(2) TOSHIBA 150 HP/1,160 RPM MOTORS, AIR STRAIN, MCDONOUGH EDLH CARRIAGE W/30 HP HYDRAULIC DRIVE, 24' CENTERING ROLLS, 30' OUTFEED SLAB ROLLS W/HYDRAULIC DRIVEN ROLLS, SAS 90 HP HYDRAULIC UNIT, PARTIAL CONTROLS & ELECTRICS, S/N: 124058

ALBANY 5' QUAD BAND TEMPOSONIC POSITIONED VERTICAL BAND RESAW W/(4) TOSHIBA 125 HP/1,765 RPM MOTORS, MECHANICAL STRAIN, 6' LINE BAR W/POWERED FEED ROLLS, APPROX 20' INFEED ROLLCASE, MERRY-GO-ROUND BELTS, SAS 100 HP HYDRAULIC UNIT, PARTIAL CONTROLS & ELECTRICS, S/N: 328, 329, 330 & 331

1988 MCDONOUGH SD6A 6' RH BOTTOM CUTTING HORIZONTAL BAND RESAW W/APPROX 200 HP MOTOR, POWERED KNURLED FEED THRU ROLLS & HOLD DOWNS, 30' HYDRAULIC DRIVEN INFEED ROLLCASE, (3) HYDRAULIC DRIVEN OUTFEED ROLLS, SAS APPROX 25 HP HYDRAULIC UNIT, CONTROLS, S/N: H72-321BC



1.800.426.3008 - 425.486.1246 - murphyauction.com

OMAK, WASHINGTON



CARRIAGE - SLABBER - LOG TURNER:

2007 CORLEY SUSL LOG CARRIAGE (MILL CLOSED IN 2009), 48"X16' 3-KNEE TEMPOSONIC POSITIONED, SUPER STRAIGHT LINE KNEES W/CURVED DOGS, (4) TRUCKS, BUMPERS, CARRIAGE TAKE UP, PANTOGRAPH, 120' OF RAIL, SAS 40 HP HYDRAULIC UNIT, 300 HP/880 RPM CARRIAGE DRIVE W/GENCO 300 HP/880 RPM DC GEN SET, LCI READY SCAN, CONTROLS & PARTIAL ELECTRICS

CM&E 64-8K RH TEMPOSONIC POSITIONED HEAD RIG SLABBER W/APPROX 150 HP/1,180 RPM MOTOR
LOG BOSS 42" HYDRAULIC OPERATED LOG TURNER

EDGERS - TRIMMERS - OPTIMIZERS:

USNR TA36 TOP HEAD 6"X36" REMAN EDGER W/300 HP TOP ARBOR DRIVE, APPROX 200 HP MOTOR ON TOP REMAN HEAD, MOTOR TO SKK FEED DRIVE MOTOR, (3) SHIFTING SAWS, KNURLED FEED ROLLS, PRESS ROLLS, TEMPOSONIC POSITIONED INFEED TABLE, OUTFEED BELT, SAS 85 HP HYDRAULIC UNIT CONTROLS & ELECTRICS, S/N: 3245

1988 UKIAH 8"X60" STA COMBINATION EDGER W/(2) RELIANCE 350 HP/1,765 RPM ARBOR MOTORS, MOTOR TO SKK FEED DRIVE, #3 STANDARD SPLINE ARBOR, KNURLED FEED ROLLS, PRESS ROLLS, CLAMSHELL OPENING, APPROX 12'X60" INFEED ROLLCASE, APPROX 24'X60" INFEED ROLLCASE, APPROX 24'X60' OUTFEED BELT, (2) SKK DRIVES, SAS 40 HP HYDRAULIC UNIT, UKIAH SAW GLIDE SYSTEM, CONTROLS & ELECTRICS

1997 USNR/HEMCO 3320 LH SAWMILL TRIMMER W/(11) INDIVIDUALLY MOTORIZED AIR LIFT SAWS, 20' CUT, APPROX 26' PASS, HEMCO 3-STAGE FENCE, APPROX 10' 9-STRAND 81X FEED THRU TRANSFER, 10' 7-STRAND 81X LUGGED INFEED TRANSFER W/EVEN END ROLLCASE, HIGH SPEED LUG LOADER/BOARD FEEDER, 7-ARM OUTFEED TIPPLE W/OPTI GATE, 24' 8-STRAND 81X LUGGED OUTFEED W/EVEN END ROLLS, APPROX 24'X34' DROP OUT CONVEYOR, CLEAN OUT CONVEYOR W/DRIVES. CONTROLS & ELECTRICS (SAWMILL)

2003 TECO ENGINEERING PLANER MILL TRIMMER W/(11) INDIVIDUALLY MOTORIZED AIR LIFT SAWS W/7-1/2 HP/3,500 RPM MOTORS, 20' CUT, 26' PASS, ZERO SAW, 2-STAGE FENCE, 21' 2-SECTION 81X LUGGED FEED THRU TRANSFER W/EVEN END ROLLS, LUCIDYNE COLOR SCAN 200 GRADE MARK READER, 6' 6-STRAND LUG LOADER/BOARD FEEDER, CONTROLS & ELECTRICS (PLANER MILL)

IRVINGTON 5-STATION GRADE MARK STAMPER, S/N:21358 (PLANER MILL)

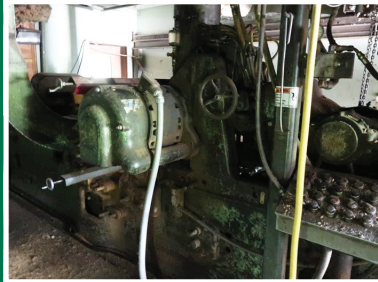
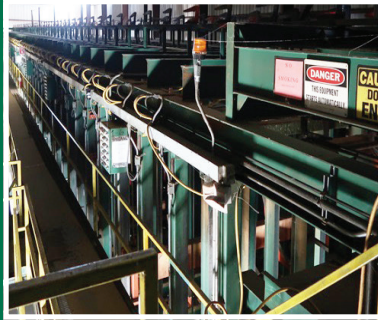
1999 USNR 20' EDGER MAXIMIZER W/(5) USNR G26L7DGRO SCANNING HEADS, PASS 26', SCHURMAN 16' 9-STRAND 81X LUGGED PASS THRU TRANSFER W/EVEN END ROLLS, 6' 5 & 7-STRAND SHARP CHAIN LOADING TABLE, USNR APPROX 10' 10-STRAND UNSCRAMBLER, CONTROLS & ELECTRICS, S/N:3245 (FOR USNR EDGER)

1998 USNR 20' TRIMMER OPTIMIZER W/(5) USNR G26L7DGRO SCANNING HEADS, PASS 22', HEMCO 19' 9-STRAND 81X LUGGED PASS THRU TRANSFER, HEMCO 4-1/2' 7-STRAND LUG LOADER, 6-1/2' 6-STRAND 81X LOADING TRANSFER, 16' 6-STRAND 81X INFEED TRANSFER, APPROX 16' 10-STRAND UNSCRAMBLER, CONTROLS & ELECTRICS (SAWMILL)



1.800.426.3008 - 425.486.1246 - murphyauction.com

AUCTION: SEPT. 30 - OCT. 7



SORTERS - STACKERS - BANDER/PACKAGING:

1998 HEMCO 6'-20" 48-BIN J-BAR SORTER W/75 HP MOTOR TO SKK DRIVE, APPROX 200' 7-STRAND 81X FEED THRU TRANSFER, 42" BINS W/APPROX 377 - 2"X4" CAPACITY, 23,500 LB CAPACITY, APPROX 100' 5-STRAND 81X INFEED TRANSFER W/LASER THICKNESS, WEIGHT SCALES & MOISTURE DETECTING STATIONS, 16' 6-STRAND 81X INCLINE TRANSFER, (8) REMOTE STATIONS, (4) 50' 5-STRAND 81X HAUL AWAY CHAINS W/MOTOR TO SKK DRIVES, 75 HP HYDRAULIC UNIT, CONTROLS & ELECTRICS (SAWMILL)

2003 TECO ENGINEERING 20-TRAY SORTER W/6'-20", 4"-18" & 3/4"-2" 110 LPM CAPACITIES, 21' 9-STRAND 81X INFEED TRANSFER W/(9) 15' EVEN END ROLLS, 2-1/2' X 5-ARM TIPPLE GATE, APPROX 36' 5-STRAND 81X INFEED INCLINE TRANSFER, 6'-5" X 6-STRAND TRANSITION BELT, APPROX 70' 5-STRAND DECLINE LOADING TRANSFER W/LUMBER GATES & CYLINDERS, APPROX 50 HP SEW GEARHEAD INFEED DRIVE, 20' TRAYS, APPROX 75' AVERAGE LONG & 20-TRAYS APPROX 60' LONG W/(40) SEW 5 HP/1,600 RPM GEARHEAD MOTORS, APPROX 35' 4-1/2" X 5-STRAND HYDRAULIC OPERATED TIPPLE, 20 HP HYDRAULIC UNIT, CONTROLS & ELECTRICS (PLANER MILL)

LUNDEN 20' HYDRAULIC OPERATED OVER END STACKER W/AUTO STICKER PLACER, SECONDARY STACKING FORKS, 5-ARM X 62" LUMBER LOWERING HOIST, (9) STICK PLACER ARMS, 24' 2-SECTION 6-STRAND 81X INFEED W/EVEN END CHAINS, APPROX 16' 8-STRAND UNSCRAMBLER, 17' 5-STRAND 81X TAKE AWAY TRANSFER W/SKK GEARHEAD MOTOR, APPROX 120' 4-SECTION OUTFEED ROLLCASE W/(42) 60" ROLLS, (4) SKK DOUBLE REDUCTION GEARHEAD MOTORS, 40 HP HYDRAULIC UNIT, CONTROLS & ELECTRICS, S/N:80300 (SAWMILL)

20' HYDRAULIC OPERATED OVER END STACKER W/SECONDARY STACKING RATCHET ARMS, 4-ARM X 55" LUMBER LOWERING HOIST, (5) LUMBER PLACING ARMS, 18' 2-SECTION 5 & 6-STRAND 81X INFEED TRANSFER W/EVEN END CHAINS, 26' POWERED OUTFEED ROLLCASE W/(10) 58" ROLLS, GEARHEAD DRIVE, 80 HP HYDRAULIC UNIT, CONTROLS & ELECTRICS (PLANER MILL)

20' OVER END MECHANICAL STACKER W/5-ARM X 52" LUMBERING LOWERING HOIST, (5) LUMBER PLACING ARMS, INFEED TRANSFER W/EVEN END CHAIN, 18' POWERED OUTFEED ROLLCASE W/(7) 8-1/2"X60" ROLLS, GEARHEAD MOTOR

ACME F785769 STEEL BANDING STATION W/RAPZ 5/8" BANDING HEAD, TOP & SIDE SQUEEZE, BUNK PLACER MAGAZINE, INFEED & OUTFEED BUMP GATES, 25' POWERED INFEED ROLLCASE W/(10) 8-1/2"X58" ROLLS, 30' 2-STRAND 81X OUTFEED TRANSFER W/(4) 16' TRANSFER ROLLS, (2) GEARHEAD MOTORS, CONTROLS & ELECTRICS, S/N:A419

FINAL TOUCH AUTOMATED PAPER WRAP STATION W/(12) SIZE SELECTIONS, POWERED FEED ROLLS, APPROX 30' 2-STRAND 81X INFEED TRANSFER W/(4) 16' TRANSFER ROLLS, DUAL DIRECTION 10' 4-STRAND H78 INFEED TRANSFERS W/ALL DRIVES, CONTROLS & ELECTRICS (SPARE 8-SELECTION AUTOMATED PAPER WRAP MACHINE)

PLANERS - BREAKDOWN HOISTS - STICKER RECOVERY:

STETSON ROSS 6-14D 8"X15" PLANER, 20-KNIFE 130 HP TOP HEAD, 20-KNIFE 65 HP BOTTOM HEAD & 16-KNIFE 35 HP SIDE HEADS, (6) HYDRAULIC DRIVEN FEED ROLLS W/100 HP HYDRAULIC UNIT, SPARE HEADS & PARTS, S/N: 4279

STETSON ROSS 20' HYDRAULIC DRIVEN DUAL PINEAPPLE FEED TABLE W/SLOW DOWN ROLL, (2) CHROME SPIRAL & (4) SMOOTH 10"X30" CANTED ROLLS, 8' 5-STRAND 81X INFEED TRANSFER, HOLD OVER SHOE, 50 HP HYDRAULIC DRIVE

STETSON ROSS/KIMWOOD 24' HYDRAULIC DRIVEN LIVE BRIDGE W/(11) 10"X14" SMOOTH CANTED ROLLS (2) APPROX 17"X25" OUTFEED BELTS W/HYDRAULIC DRIVE MOTOR TO APPROX 30"X6" SLOW DOWN BELT W/HYDRAULIC DRIVE

1.800.426.3008 - 425.486.1246 - murphyauction.com

OMAK, WASHINGTON



STETSON ROSS 6-16A1 AUTOMATIC 6"X16" PLANER, 16-KNIFE APPROX 100 HP TOP HEAD, 16-KNIFE APPROX 50 HP BOTTOM HEAD & 12-KNIFE APPROX 35 HP SIDE HEADS, (6) HYDRAULIC DRIVEN FEED ROLLS, BRIDGE & PINEAPPLE FEED TABLE W/SAS 150 HP HYDRAULIC UNIT, SPARE HEADS & PARTS
20' HYDRAULIC DRIVEN SINGLE PINEAPPLE FEED TABLE W/SLOW DOWN ROLL, (7) 16"X33" CANTED TORPEDO ROLLS, 3-1/2' 6-STRAND ROLLER CHAIN INFEED
8' HYDRAULIC DRIVEN LIVE BRIDGE W/(3) 16"X16" ROLLS, WAGNER 683 PASS THRU MOISTURE METER, APPROX 18"X36' OUTFEED BELT & APPROX 30"X6' SLOW DOWN BELT W/HYDRAULIC DRIVES

HOGS - CHIPPER - VIBRATORY CONVEYORS - METAL DETECTORS:

JEFFREY 56WBSS HAMMER HOG W/TOSHIBA 300 HP/1,185 RPM MOTOR, SS 9" ROTOR SHAFT W/40"X41" OVERALL ROTOR, 54"X45" OPENING, S/N:886828, APPROX 40' - 8"X15" BOX CHAIN W/FLITES INFEED CONVEYOR W/SKK DOUBLE REDUCTION GEARHEAD MOTOR, APPROX 50' - 6"X12" BOX CHAIN W/FLITES OUTFEED CONVEYOR W/SKK DOUBLE REDUCTION GEARHEAD MOTOR (SAWMILL)

LAMB APPROX 24"X36" HAMMER HOG W/BROOK 250 HP/1,760 RPM MOTOR, S/N:840122-1, BENSRAW CBRSM6SB-300-480-3R, 300 HP SOFT START, APPROX 30"X45' CHEVRON BELT INFEED CONVEYOR W/SKK GEARHEAD MOTOR, APPROX 60' BLOWER OUTFEED (PLANER MILL)

PRECISION HUSKY TRUE SLICE 18-66 8-KNIFE CHIPPER W/TOSHIBA 250 HP/1,175 RPM MOTOR, SIDE INFEED, PARALLEL DISCHARGE, S/N:C3292, SAFTRONICS EZ6360 STACK SOFT START (SAWMILL)

MILLPOWER APPROX 18"X110' BALANCED VIBRATORY CONVEYOR W/METAL SHARK MAGNET, 1" STROKE, 425 RPM, S/N:011052 (TO MILL CHIPPER), MILLPOWER APPROX 18"X74' BALANCED VIBRATORY CONVEYOR W/5' TUB, MDI CR85 METAL DETECTOR, 1" STROKE, 425 RPM, S/N:031136 (TO MILL CHIPPER), MILLPOWER APPROX 18"X46' VIBRATORY CONVEYOR, 1" STROKE, 433 RPM (TO PLANER MILL HOG) VIBRA PRO HFR-301500-F-1/4(MS) 60'F-10 HP APPROX 30"X60' VIBRATORY CONVEYOR, 1/2"-1-1/8" STROKE, 460 RPM, 4' TUB W/MDI CCW78 METAL DETECTOR, S/N:1283 (TO SAWMILL HOG), VIBRA PRO LS181200F-3/16(MS) 84' 7-1/2 HP APPROX 18"X80' VIBRATORY CONVEYOR, 7/8" STROKE, 440 RPM, S/N:1284 (TO SAWMILL CHIPPER), VIBRA PRO 120900F-3/16(MS) 39.5F 3 HP APPROX 12"X38' VIBRATORY CONVEYOR, 1/2"X1-1/8" STROKE, 450 RPM, S/N:1156 (FROM CHIP SCREEN)

CHIP SCREEN - FUEL & SURGE BINS - BLOWERS - FEEDER:

BM&M 8'X10' 2-DECK CHIP SCREEN, JOB #10251 (TO SAWMILL CHIPPER)

APPROX 50-UNIT HYDRAULIC OPERATED MON BIN W/16' GATES, 10 HP HYDRAULIC UNIT (BOILER AREA), APPROX 45-UNIT HYDRAULIC OPERATED FUEL BIN W/20' GATES, 20 HP HYDRAULIC UNIT, APPROX 8' CYCLONE (PLANER AREA), (4) APPROX 40-UNIT HYDRAULIC OPERATED FUEL BINS W/20' GATES, 10 HP HYDRAULIC UNITS, APPROX 10' CYCLONE (BOILER & PLANER AREAS), (2) APPROX 30-UNIT HYDRAULIC OPERATED FUEL BINS W/20' GATES, 10 & 20 HP HYDRAULIC UNITS (BOILER & SAWMILL AREAS), APPROX 8'H X 8'W X 10'L DUAL SCREW LIVE BOTTOM SURGE BIN W/SKK GEARHEAD MOTOR (TO SAWMILL CHIPPER)

SUTORBILT 14"X20" ROTARY LOBE BLOWER W/50 HP MOTOR (TO SAWMILL CHIPPER), RADER 3100 SERIES 12"X30" ROTARY LOBE BLOWER (REBUILT), S/N:A88444, ARCHER 30"X30" CHIP FEEDER W/SKK GEARHEAD MOTOR (TO SAWMILL CHIPPER) 7/9/2020 ARCHER APPROX 60" BLOWER W/RELIANCE 200 HP/1,785 RPM MOTOR, SAFTRONICS EZ6-180 SOFT START (PLANER MILL HOG AREA) RADER 30"X30" & 25"X30" (LOCATED AT PLYWOOD MILL)

AUCTION: SEPT. 30 - OCT. 7



KILNS - BOILERS:

(2) **WELLONS** 32'X88' COMPUTERIZED MULTI-ZONAL KILNS, ALL ALUMINUM, (1) INDIVIDUALLY MOTORIZED KILN W/(8) 60" ALUMINUM FANS W/15 HP/880 RPM MOTORS, (4) LINE SHAFT KILNS W/75 HP MOTORS, WELLONS & USNR CONTROLS, FISCHER VALVES, 4" KILN FIN PIPE, 8'X160' KILN CONTROL HOUSE, APPROX 5,100' OF KILN TRACK, (300+/-) 4"X4" & 4"X6" CONSTRUCTED 48"X106" KILN CARTS W/6' CENTERS, APPROX 17,400 SQ FT ALL STEEL COOLING SHED

1985 NEBRASKA 350 PSI, 20,000 LB/HR HOG FUEL FIRED BOILER, S/N:B2147 W/CLEAVER BROOKS SPRAYMASTER DEAERATOR TANK & SUPPORT EQUIPMENT, WELLONS FUEL FIRED BOILER, W/N:3916-1301 (NO DATA) W/SUPPORT EQUIPMENT, (2) WELLONS FLY ASH RECOVERY SYSTEMS W/(2) NYB 11,650 SCFM, 40 HP FANS & (2) NORTHERN BLOWER SIZE 3300 75 HP FANS, (2) WELLONS APPROX 160-UNIT SILOS, S/N:8802-0032 & 5901-8

FILING & GRINDING ROOM EQUIPMENT:

(2) **ARMSTRONG** BANDSAW LEVELERS, S/N:HDBSL & BSL32, **ARMSTRONG** AUTO SWAGE & SHAPER, S/N:ASL109, (2) **ARMSTRONG** RH VARISHARP CNC BANDSAW SHARPENERS, S/N:USHARP40X2, **ARMSTRONG** #4RH BANDSAW SHARPENER, S/N:91714, (2) **ARMSTRONG** #4LH BANDSAW SHARPENERS, S/N:14897 & N/A, (2) **ARMSTRONG** #4SD-JP BANDSAW STRETCHER ROLLS, S/N:45690SR-1 & 456SDSR-2, **ARMSTRONG** #4JP BANDSAW STRETCHER ROLL, S/N:RBSR4-1, **ARMSTRONG** CIRCLE SAW LEVELER, S/N:20536, **ARMSTRONG** 3-10C CIRCLE SAW STRETCHER ROLL, S/N:15817, (2) **WRIGHT** W150HD-B FACER/TOPPERS SAW GRINDERS, S/N:N/A, **WRIGHT** W350 SUPER HD DUAL SIDE GRINDER, S/N:G0306, **WRIGHT** W350 AUTO DUAL SIDE GRINDER, S/N:332, **SCHURMAN** 96 DUAL HEAD SAW GUIDE SURFACER, **NEWMAN** G280 ROTARY KNIFE TUB GRINDER, **FOLEY** 228 TRAVEL BED PROFILE KNIFE GRINDER, **BARNHARDT** #54 BANDMILL WHEEL GRINDER W/30" & 55" BARREL, (2) POWERED & (2) NON-POWERED ROLLS, **ACME** CIRCLE SAW SHARPENER, **NIELSEN** K200 CHAIN SHARPENER, **HANCHETT** BANDSAW SHEAR, (4) BENCH TOP GUIDE GRINDERS, GUIDE PRESSES, SAW ANVILS, SWAGES & SHAPERS, **ARMSTRONG** TENSION GAUGE, CIRCLE SAW SET UP STANDS, (6) CHAIN HOISTS, SPARE BAND & ROUND SAWS, CHIPPER KNIVES & BABBIT POT

COMPRESSORS - DRYERS - AIR RECEIVERS:

SULLAIR TS20-200HAC ROTARY SCREW COMPRESSOR, 200 HP, 150 PSIG, S/N:003/0068690 (SAWMILL), 1989 QNW 740B ROTARY SCREW COMPRESSOR, 150 HP, S/N:890306 (SAWMILL), 1983 QNW 650A ROTARY SCREW COMPRESSOR, 150 HP, S/N:830543 (SAWMILL), 1978 QNW 350D ROTARY SCREW COMPRESSOR, 100 HP, S/N:780593 (PLANER MILL), 1991 QNW 10-C30F TANK MOUNTED ROTARY SCREW COMPRESSOR, 30 HP, S/N:916055 (PLANER MILL), 1990 QNW 500D1 ROTARY SCREW COMPRESSOR, 100 HP, S/N:900549 (PLANER MILL), 1985 QNW 1000-B/S ROTARY SCREW COMPRESSOR W/200 HP MOTOR, 11,532 HRS, S/N:850632 (PLYWOOD MILL)

2001 GREAT LAKES AIR GIH-1000-436 INTERNAL HEAT REGENERATIVE AIR DRYER, 1,000 SCFM @100 PSIG, S/N:23274 (SAWMILL), **PNEUMATECH** EE-500 HEAT REGENERATIVE AIR DRYER, 500 SCFM @ 150 PSIG (PLANER MILL), 1990 **ZURN** 253F REGENERATIVE COMPRESSED GAS DRYER, 1,550 SCFM, S/N:HD-1561 (SAWMILL)

2005 MANCHESTER APPROX 30"X72", 200 PSIG AIR RECEIVER TANK (PLANER MILL), **HANSON** 400 GALLON APPROX 3'X7', 137 PSIG AIR RECEIVER TANK (SAWMILL), APPROX 4'X9' AIR RECEIVER TANK (SAWMILL), APPROX 3'X10' AIR RECEIVER TANK (SAWMILL), APPROX 3'X6' AIR RECEIVER TANK (SAWMILL)

1.800.426.3008 - 425.486.1246 - murphyauction.com

OMAK, WASHINGTON



ELECTRICS:

ALLEN BRADLEY 9-SECTION MCC W/(38) SWITCHES (SAWMILL), ALLEN BRADLEY 8-SECTION MCC W/(34) SWITCHES (PLANER MILL), ALLEN BRADLEY 6-SECTION MCC W/(29) SWITCHES (PLANER MILL), ALLEN BRADLEY 6-SECTION MCC W/(24) SWITCHES (PLANER MILL), (2) ALLEN BRADLEY 6-SECTION MCC'S W/(21) SWITCHES (SAWMILL & PLANER MILL), ALLEN BRADLEY 5-SECTION MCC W/(19) SWITCHES (SAWMILL), ALLEN BRADLEY 5-SECTION MCC W/(18) SWITCHES (PLANER MILL), ALLEN BRADLEY 5-SECTION MCC W/(4) SWITCHES (PLANER MILL), ALLEN BRADLEY 4-SECTION MCC W/(23) SWITCHES (SAWMILL), ALLEN BRADLEY 4-SECTION MCC W/(15) SWITCHES (SAWMILL), ALLEN BRADLEY 4-SECTION MCC W/(11) SWITCHES (SAWMILL), ALLEN BRADLEY 3-SECTION MCC W/(14) SWITCHES (SAWMILL), ALLEN BRADLEY 3-SECTION MCC W/(11) SWITCHES (PLANER MILL), ALLEN BRADLEY 2-SECTION MCC W/(10) SWITCHES (PLANER MILL), ALLEN BRADLEY 2-SECTION MCC W/(5) SWITCHES (PLANER MILL), SQUARE D 6-SECTION MCC W/(26) SWITCHES (SAWMILL), SQUARE D MCC W/(17) SWITCHES (SAWMILL), SQUARE D 6-SECTION MCC W/(22) SWITCHES (PLANER MILL), SQUARE D 2-SECTION MCC W/(8) SWITCHES (SAWMILL), (3) SQUARE D 1,600 AMP 4-SECTION MAINS (SAWMILL & PLANER MILL), SIEMENS 2,000 AMP 2-SECTION MAIN (SAWMILL), STARTERS TO 300 HP, MOTORS TO 500 HP, DISCONNECTS TO 800 AMP, TRANSFORMERS TO 300 KVA, ALLEN BRADLEY LOGIX 5555 PLC W/(16) MODULES & (8) MODULES, ALLEN BRADLEY LOGIX 5555 PLC W/(13) MODULES & (3) MODULES, 8,000+ CONNECTED HORSEPOWER WIRE & CONDUIT LOT

LOG DECKS - TRANSFERS - HAULS - ROLLCASES:

APPROX 35' 5-STRAND H132 INFEED LOG DECK (TO 44" DEBARKER) W/22' 5-ARM LS&L, S-DRIVE W/SKK DOUBLE REDUCTION GEARHEAD MOTOR, APPROX 14' 6-STRAND H132 INFEED LOG DECK (TO 27" DEBARKER), S-DRIVE W/MOTOR TO FALK REDUCER DRIVE, APPROX 10' 6-STRAND H132 SPLIT INFEED LOG DECK (TO 27" DEBARKER), S-DRIVE W/(2) SKK DOUBLE REDUCTION GEARHEAD MOTORS
(9) ASSORTED LOG TRANSFERS TO APPROX 56', (6) ASSORTED LOG HAULS TO APPROX 70', (4) ASSORTED LOG & TIMBER ROLLCASES TO 30'

LUMBER TRANSFERS - ROLLCASES - CHAIN & BELT CONVEYORS:

NUMEROUS LUMBER TRANSFERS TO 80', NUMEROUS LUMBER ROLLCASES TO APPROX 30', NUMEROUS CHAIN CONVEYORS TO APPROX 150', NUMEROUS BELT CONVEYORS TO APPROX 75', (22) 53"X18' LUMBER PULL ROLLCASES (MOST DRIVES THROUGHOUT MILL ARE SKK)

TRUCK SCALES - TRAILER LOADER - RAIL CAR LOADER:

2002 UNITEC 46090-10LP-C 100-TON X 20 LB LOW PROFILE ABOVE GROUND LOAD CELL PLATFORM SCALE W/CARDINAL DIGITAL READOUT DISPLAY & PRINTER, S/N:7302 (LOCATED AT PLYWOOD MILL)

RICE LAKES 60-TON X 20 LBS LOAD CELL TRUCK SCALE W/10'X70' CONCRETE DECK, CARDINAL 220 WEIGHT INDICATOR.

(2) **MAR** 10,000 LB CAPACITY BOLT TOGETHER TRAILER LOADERS W/ROBBINS & MEYERS HOIST. CUSTOM BUILT 10,000 LB TRAILER HOIST (LOCATED AT PLYWOOD MILL)

WIG WAM RAIL CAR LOADING STATION W/SINGLE LOADING CHUTE, CABLE WINCH & CONTROLS

1.800.426.3008 - 425.486.1246 - murphyauction.com

AUCTION: SEPT. 30 - OCT. 7



FIRE PUMP SYSTEM - FUEL TANKS - LOG YARD:

CAT 3306 DIESEL ENGINE FIRE PUMP SYSTEM, S/N:64Z11639 W/VERTI-LINE 14RM1 1,500 GPM PUMP, PEERLESS 1,500 GPM/125 HP/1,775 RPM ELECTRIC PUMP, METRON FD2JRS FIRE PUMP CONTROLLER, APPROX 100 GALLON DIESEL TANK, APPROX 8' DIA X 31-1/2' LONG SINGLE WALL DIESEL TANK W/APPROX 4' DIA X 6' LONG GAS TANK W/TUTHILL PUMP, QUANTITY OF STEEL LOG YARD BUNKS, ALUMINUM LOG YARD SPRINKLER PIPE, TIMBERS, STICKERS, LATH, BANDING BUNKS, (20) ALL STEEL LOG BUNKS

MACHINE SHOPS - SHOPS & STORES:

JET GH1660ZX CNC GEARED HEAD PRECISION LATHE, 16"X60", 3-1/2" THRU HOLE, 25-1,800 RPM, 3-JAW CHUCK, TOOL POST, TAIL STOCK, TOOLING, S/N:070106ZX1441, MONARCH 30-1/2"X96" ENGINE LATHE, LODGE & SHIPLEY 20" X APPROX 10' ENGINE LATHE, BRIDGEPORT SERIES II UNIVERSAL MILLING MACHINE, VARNAMO FV-3KM UNIVERSAL MILLING MACHINE, CINCINNATI OVER ARM VERTICAL MILLING MACHINE, (2) SMALL ENGINE LATHES, MACHINE TOOLING, NUMEROUS WELDERS, SHOP PRESSES, DRILL PRESSES, TANK COMPRESSORS, PIPE THREADERS, HOSE PRESSES, PATTERN BURNER, BANDSAWS, LUBE REELS & TANKS, POWER & HAND TOOLS, HYDRAULIC FITTINGS & HOSE, MILL CHAIN, SHAFTING, SHEAVES, PULLEYS, HYDRAULIC MOTORS, CONDUIT & FITTINGS, AIR & HYDRAULIC VALVES, EQUIPTO ROLLING DRAWER CABINETS, BEARING INVENTORY, MACHINE SHOP EQUIPMENT LOCATED AT PLYWOOD MILL TO INCLUDE: SCOTCHMAN 4014C 40-TON IRON WORKER, BRIDGEPORT SERIES 1 2 HP MILLING MACHINE, MAZAK APPROX 20"X60" ENGINE LATHE, VICTOR 1040 APPROX 10"X40" ENGINE LATHE, BIGNALL KEELER NO. 6B 1-1/2"-6" PIPE THREADER, KALAMAZOO APPROX 48" HORIZONTAL METAL CUTTING BANDSAW, APPROX 64" PYRAMID ROLLS, APPROX 14" STEEL CUT OFF SAW W/15 HP MOTOR, STEEL RACK W/ASSORTED ANGLE, CHANNEL, BAR, SQUARE & ROUND STOCK

BUILDINGS:

ALL STEEL MAIN SAWMILL BUILDING TO INCLUDE ORIGINAL SAWMILL BUILDING W/ADDITIONS, APPROX 20'-40' HIGH, APPROX 72,000 SQ FT, SORTER BUILDING APPROX 44'-48'H X 40'W X 180'L (SOLD SEPARATELY), STORAGE BUILDING APPROX 30'-32'H X 90'W X 98'L (SOLD SEPARATELY)

ALL STEEL PLANER BUILDING APPROX 20'-36' HIGH, APPROX 70,000 SQ FT (SOME PORTIONS OF BUILDING MAY BE SOLD SEPARATELY)

METALLIC BRAND APPROX 30'-32'H X 70'W X 50'L ALL STEEL MECHANICS SHOP BUILDING W/(2) 18'X24' & (1) 16'X24' POWERED ROLL UP DOORS, INSULATED, LIGHTING & ELECTRICS, WEMCO APPROX 24'L X 60'W 5-TON BRIDGE CRANE W/STAHL 5-TON CABLE HOIST, POWER TRAVEL

METALLIC BRAND APPROX 20'-22'H X 40'W X 75'L ALL STEEL MILLWRIGHTS SHOP BUILDING W/(2) 16'X24' ROLL UP DOORS, INSULATED, LIGHTING & ELECTRICS

APPROX 20'-22'H X 40'W X 80'L ALL STEEL MACHINE SHOP BUILDING W/(2) APPROX 12'X10' ROLL UP DOORS, INSULATED, LIGHTING & ELECTRICS

APPROX 20'-22'H X 170'W X 120'L ALL STEEL 3-SIDE OPEN STEEL LUMBER STORAGE SHED
NUMEROUS SMALL METAL BUILDINGS & COVERS

1.800.426.3008 - 425.486.1246 - murphyauction.com

OMAK, WASHINGTON



Drone Overview Photos:
For Additional Photos and Information Visit
murphyauction.com



1.800.426.3008 - 425.486.1246 - murphyauction.com

AUCTION: SEPT. 30 - OCT. 7

ROLLING STOCK:

- 2008 CAT 988H** RUBBER TIRE LOG LOADER W/MEDFORD LOG FORKS, ACERT 18 TIER-3 501 HP DIESEL ENGINE, S/N:RHX06947, VARIABLE SHIFT CONTROL, 130 GPM HYDRAULICS, 4-SPEED FORWARD, 3-SPEED REVERSE TRANSMISSION, 35/65-33 TIRES, HOUR METER READS: 20,618, S/N: CAT988HHBXY02565
- 2000 CAT 988F SERIES II** RUBBER TIRE LOG LOADER W/MEDFORD LOG FORKS, CAT 3408ETA 675 HP DIESEL ENGINE, 4-SPEED FORWARD, 3-SPEED REVERSE TRANSMISSION, 35-65/33 TIRES, HOUR METER READS: 26,626, S/N: 2ZR02312
- CAT 322CFM** TRACK MOUNTED HEEL BOOM LOG LOADER W/CAT 3126TA 174 HP DIESEL ENGINE, CAB & BOOM GUARDS, 27-1/2" DOUBLE GROUSER TRACKS, HOUR METER READS: 18,320, S/N: CAT0322CCCEBY00196
- 2004 VOLVO EC330BLC** TRACK MOUNTED HEEL BOOM LOG LOADER W/VOLVO DC12 198 HP DIESEL ENGINE, JEWELL BOOM, CAB & CYLINDER GUARDS, HOUR METER READS: 14,229, S/N: EC330V10248
- VOLVO EC290LC** TRACK MOUNTED HEEL BOOM LOG LOADER W/CUMMINS C8.3-C 197 HP DIESEL ENGINE, PIERCE BOOM, CAB & CYLINDER GUARDS, HOUR METER READS: 21,628, S/N: EC290LC09392
- VOLVO L90** RUBBER TIRE LOG LOADER W/PSM FORKS, VOLVO D6J 156 HP DIESEL ENGINE, 20.5R25 TIRES, HOUR METER READS: 8,002, S/N: VCE0L90GT0S617443
- SHUTTLELIFT 5560RT** ROUGH TERRAIN CARRY DECK CRANE, 15-TON, 4-SECTION, 50-1/2' BOOM, 10-TON CARRY DECK, GM 4.3L V6 PROPANE ENGINE, 4-SPEED FORWARD/REVERSE POWERSHIFT TRANSMISSION, 2-WHEEL, CRAB & 4-WHEEL STEERING, HOUR METER READS: 3,987, S/N: 1155100
- CASE 580C** LOADER BACKHOE, 70 HP, SHUTTLE SHIFT, 82" FRONT BUCKET, 12" BACKHOE BUCKET, OROPS, HOUR METER READS: 2,866, S/N: 898701
- CAT 216B** SKID STEER LOADER, 52 HP CAT 3024C, CAT 62" BUCKET, 42" FORKS, S/N: CAT0216BHRL01512
- CAT 12F** MOTOR GRADER W/12' MOLD BOARD W/CUTTING EDGE, CAT 6-CYL DIESEL ENGINE, 15.00R24 TIRES, S/N: 81H9348
- 1964 CAT D8K** CRAWLER TRACTOR W/10' U-BLADE, CAT D342 6-CYLINDER DIESEL ENGINE, ATECO 2-BARREL RIPPER, HOUR METER READS: 5,454, S/N: 46A07670
- MORBARK 20** TOTAL CHIPARVESTER W/CUMMINS VT-905 DIESEL LENGINE, TURN KNIFE, 7/8" CHIPPER, TELESCOPING BOOM W/ROTARY GRAPPLES, CAB & CONTROLS, MOUNTED ON T/A TRAILER, S/N: 20148
- 2002 GENIE Z-60/34** SELF-PROPELLED ARTICULATING BOOM, 4X4, 60' PLATFORM HEIGHT, 500 LB CAPACITY, HOUR METER READS: 3,645, S/N: Z60-3810
- JLG 40F** MAN LIFT, APPROX 1,000 LB CAPACITY, 40' REACH, WISCONSIN PROPANE, HOUR METER READS: 2,125
- USBR** 1,000 LB CAPACITY, 15' ELECTRIC SCISSOR LIFT
- HYSTER H210HD** 18,350 LB CAPACITY FORKLIFT, DIESEL, 212.6" 2-STAGE MAST W/FORK POSITIONERS, SIDE SHIFT, DUAL PNEUMATIC TIRES, S/N: F007E01752Z
- HYSTER H190HD** 17,600 LB CAPACITY FORKLIFT, DIESEL, 212.6" 2-STAGE MAST W/FORK POSITIONERS, SIDE SHIFT, DUAL PNEUMATIC TIRES, S/N: F007E02636A
- (2) CAT DP80** 9,500 LB CAPACITY FORKLIFTS, DIESEL, 217.2" 2-STAGE MAST W/SIDE SHIFT, DUAL PNEUMATIC TIRES, S/N: 1DP00062 & 1DP00011
- (4) CAT V180B** 18,000 LB CAPACITY FORKLIFTS (2 FOR PARTS ONLY), 218" 2-STAGE MAST W/SIDE SHIFT, PNEUMATIC FORKS, HOUR METER READS: 3,736 & 3,212, S/N: 9AF00362 & N/A
- HYSTER SPACESAVER 50** FORKLIFT, GAS, 3-STAGE MAST, SOLID TIRES (PARTS MACHINE ONLY)
- BALDORSON LOG FORKS; SLIP BUCKET; SCOOP BUCKETS; FORKLIFT MAST & FORS; MANBASKETS; REACHES & PUSH BLADE; TIRES; SPARE CAT, HYSTER & VOLVO PARTS & FILTERS; (2) 8'X20' STORAGE CONTAINERS; LOG YARD PIPE & SPRINKLER
- 1980 FREIGHTLINER** T/A WATER TRUCK, S/N: CB413HP19036 (PENDING VERIFICATION OF TITLE)
- PETERBILT** T/A WATER TRUCK (PENDING VERIFICATION OF TITLE)
- 1979 FORD F600** DUAL WHEEL WATER TRUCK, S/N: F61CVEJ2430 (PENDING VERIFICATION OF TITLE)
- PETERBILT 378** T/A DUMP TRUCK, S/N: 1XP-FDB9X-0-KD281218 (PENDING VERIFICATION OF TITLE)
- 1977 INTERNATIONAL CARGO STAR** WATER TRUCK, S/N: D1045HCA14492 (PENDING VERIFICATION OF TITLE)
- 1975 INTERNATIONAL LOADSTAR** FUEL TRUCK, S/N: D0622EHA52595 (PENDING VERIFICATION OF TITLE)
- PETERBILT** T/A TRACTOR (PENDING VERIFICATION OF TITLE)
- KEITH** 3-AXLE WALKING FLOOR TRAILER, S/N: 1S1259487ED255228 (PENDING VERIFICATION OF TITLE)
- 1978 FRUEHAUF** T/A TRAILER, S/N: FPZ687302 (PENDING VERIFICATION OF TITLE)
- 2010 FORD ESCAPE**, S/N: 1FMCU9DG6AKB49785 (PENDING VERIFICATION OF TITLE)

OMAK, WASHINGTON



2000 CAT 988F SERIES II



VOLVO EC290LC



2004 VOLVO EC330BLC



HYSTER H190HD



CAT 216B



VOLVO L90



SHUTTLELIFT 5560RT



HYSTER H210HD



JLG 40F



2002 GENIE Z-60/34



(2) CAT DP80



PETERBILT 378



PETERBILT

TERMS AND CONDITIONS

TERMS AND CONDITIONS

13% BUYERS PREMIUM ON ALL PURCHASES

PAYMENT: FULL PAYMENT MUST BE MADE BY 5 PM, THURSDAY, OCTOBER 8TH. PAYMENT MUST BE MADE BY ONLINE CREDIT CARD OR WIRE TRANSFER ONLY, NO IN-PERSON PAYMENTS (DUE TO COVID19). AFTER THE AUCTION CLOSING & YOU RECEIVE YOUR EMAILED INVOICE, PLEASE REPLY AND WE WILL CHARGE YOUR CARD ON FILE. TO PAY ONLINE GO TO MURPHYAUCTION.COM CLICK ON THE ONLINE BIDDING DROPDOWN MENU AND GO DOWN TO MAKE PAYMENT.

REMOVAL: CUSTOMERS ARE RESPONSIBLE FOR REMOVING THEIR ITEMS FROM THE AUCTION SITE. ALL ITEMS MUST BE REMOVED NO LATER THAN 4:00 PM THURSDAY, DECEMBER 31ST.

REMOVAL HOURS: 8:00 AM – 4:00 PM, THURSDAY, OCTOBER 8TH THROUGH THURSDAY, DECEMBER 31ST.
NO WEEKEND OR HOLIDAY REMOVAL.

WARRANTY DISCLAIMER: ALL SALES ARE FINAL. ALL ITEMS ARE BEING SOLD "AS IS, WHERE IS," WITH ALL FAULTS AND WITHOUT ANY WARRANTIES AS TO MERCHANTABILITY OF FITNESS FOR A PARTICULAR PURPOSE. THE PRINCIPAL/ SELLER, THE AUCTIONEER, THE ADVERTISING COORDINATOR, AND ANY OF THEIR AGENTS MAKE NO EXPRESS OR IMPLIED WARRANTIES OF ANY TYPE.

COMPLETE TERMS AND CONDITIONS OF SALE WILL BE AVAILABLE AT THE TIME OF SALE.

1.800.426.3008 - 425.486.1246 - murphyauction.com

PUBLIC AUCTION



1994 NICHOLSON A5A



James G. Murphy Co.
Commercial & Industrial Auctioneers
P.O. Box 82160, Kenmore, WA 98028

PRESORTED
FIRST CLASS MAIL
U.S. POSTAGE
PAID
SEATTLE, WA
PERMIT NO. 963



425.486.1246
murphyauction.com



James G. Murphy Co.

Commercial & Industrial Auctioneers



PUBLIC AUCTION



CIPP COLVILLE INDIAN PRECISION PINE

Start Date: 9:00 AM | Wednesday - September 30

End Date: 9:00 AM | Wednesday - October 7

Preview: 8AM to 4PM | October 6 or By Appointment

373 Omak Riverside Eastside Rd., Omak, WA 98841

>>> BID ONLINE @ MURPHYAUCTION.COM <<<

1.800.426.3008 - 425.486.1246 - murphyauction.com