

**NO MINIMUM - NO RESERVE**

# THREE DAY PUBLIC ONLINE AUCTION



## PYRAMID MOUNTAIN LUMBER



**Start Dates: 10:00 AM MST | Oct. 30, 31 & Nov. 1**

**End Dates: 10:00 AM MST | Nov. 6, 7 & 8**

**Preview: 8:00 AM to 4:00 PM MST | Nov. 4 & 5**

**Location: 379 Boy Scout Road, Seeley Lake, MT 59868**



**2023 SAMUEL SLP25(6)/VK30  
LUMBER STRAP & PAPER  
WRAP SYSTEM**



**CAMBIO MODEL 30  
30" 6-ARM RING DEBARKER**



**NEWNES  
TRANSVERSE CANT CURVE  
SAWING SYSTEM**



**2019 COMACT GRADE EXPERT  
OPTIMIZER 7500B  
AUTO GRADING SCANNER**



**YATES A63  
6-HEAD PLANER**



**MCDONOUGH  
TEMPOSONIC POSITIONED VERTICAL  
TWIN BANDMILLS**



**PRECISION 66-17  
CHIPPER**



**DOOSAN SOLAR 225LL**



**USNR EDLF  
W/2024 USNR UPGRADE**

**FULL PREVIEW AT [MURPHYAUCTION.COM](https://www.murphyauction.com)**

**1.800.426.3008 - 425.486.1246 - [MURPHYAUCTION.COM](https://www.murphyauction.com)**

# PYRAMID MOUNTAIN LUMBER

## DEBARKERS

**CAMBIO** 18" 4-ARM RING DEBARKER, (3) 8' X 16" SPIKED HOURGLASS INFEED ROLLS, (3) HYDRAULIC OUTFEED ROLLS, PNEUMATIC TENSIONER, 50 HP MOTOR, 240-GAL HYDRAULIC UNIT W/(2) TECO 40 HP MOTORS, S/N: 67922

**CAMBIO MODEL 30** 30" 6-ARM RING DEBARKER, SINGLE HOURGLASS INFEED ROLLER W/TOP & BOTTOM FEED, (3) POWER ROLLS INFEED, (3) POWER OUTFEED ROLLS, WESTINGHOUSE 75 HP MOTOR, TOSHIBA 15 HP MOTOR TO REX REDUCER, POSITIONER MOTOR, S/N: 30214

**ROSSERHEAD** DEBARKER, 25 HP TOSHIBA MOTOR, 20' TRAVEL, RADICON GEARBOX, 18' LOG POSITIONER ROLLS

**CAMBIO** 30" 6-ARM DEBARKER (SPARE)

## END DOG LOG FEEDER

**USNR** END DOG LOG CARRIAGE FEEDER (EDLF), (2) 21' TURNING ROLLS, 60' END DOG HPU, USNR SOFTWARE, MAXIMILL CONTROLS, LASER II SCANNING HEAD, DELTA RMC TOOLS MOTION CONTROL SOFTWARE, 30' TOP END DOG HYDRAULIC POSITIONING UNIT, 8 X 20 OPERATORS CAB, 300-GAL HYDRAULIC UNIT W/60 HP & 40 HP PUMPS (UPDATED IN 2024), FOR MCDONOUGH TWIN BANDSAW

## TWIN BANDMILLS & SLABBERS

**MCDONOUGH** 6' TEMPOSONIC POSITIONED VERTICAL TWIN BANDMILL, 36" 6-KNIFE SLABBERS, 10' BETWEEN CENTERS ON BANDMILL WHEELS, 592-GAL HYDRAULIC SYSTEM W/(3) 75 HP MOTORS, POWER HOLD OVER ROLLS  
TEMPOSONIC POSITIONED VERTICAL TWIN BANDMILL, GE 125 HP MOTOR, 75 HP RIGHT SLABBER, LEFT SAW 124 HP MOTOR, 100 HP LEFT SLABBER

## CARRIAGE

30"x16' 3-KNEE TEMPOSONIC POSITIONED CARRIAGE, HORSBURGH & SCOTT GEARBOX, 200 HP CARRIAGE DRIVE MOTOR, 850/1,600 RPM, (3) FLIPPERS, (6) DOGS - BOTTOM, (1) DOG-TOP, 50' TRAVEL, 68" WIDE TRACK

## HEAD RIG

**KLAMATH MACHINE WORKS 7FTRH NO. 41** 7' RIGHT HAND HEAD RIG, CM&E MODEL 64 46" SLABBER W/(8) KNIVES, 18' X 60" LOG STOP & LOADER W/5-ARMS, HOUR METER READS: 6,204

## RESAW

**KOCKUMS** 5' HORIZONTAL RESAW, 24"W POWER INFEED, AIR STRAIN, HYDRAULIC HOLD DOWN, 60" BAND MILL W/TECO 150 HP MOTOR

## TRANSVERSE CURVE SAW

**NEWNES** TRANSVERSE CANT CURVE SAWING SYSTEM, 18' X 16' INFEED TRANSFER W/STOPS, NEWNES SCANNER W/2023 RAPTOR INTEGRATING UPGRADE, (2) 350 HP MOTORS, 58" WIDE SAW BOX, (2) 12" CHIPPER HEADS, R-SERIES V TEMPOSONIC POSITIONING, RPM SOFTWARE, GANG OPTIMIZER, INTEGRATED LUBE SYSTEMS, POWER OUTFEED ROLLS

## BOARD EDGERS

**NEWNES** APPROX. 4"x30" BOARD EDGER, 16' POWER INFEED ROLLS, RAPTOR INTEGRATION SOFTWARE (HORSEPOWER IS NOT AVAILABLE AT THIS TIME)

**DENIS** 12" DOUBLE ARBOR EDGER, 300 HP TOP ARBOR, 400 HP BOTTOM ARBOR, JUMP CHAINS, GUIDE LOCKS, 20 HP FEED WORKS

**SHERMAN** 4TA18 4"x18" BOARD EDGER

## SCANNING SYSTEMS

**NEWNES/RAPTOR INTEGRATION** 20' SCANNER FOR BOARD EDGER

**RAPTOR INTEGRATION** 20' OPTIMIZER/SCANNER FOR TRIM SAW W/CONTROLS

## LUG LOADER

**COMACT** 12' X 16' 5-STRAND LUG LOADER

## TRIM SAW (SAWMILL)

**CAE NEWNES** 24' LINE SHAFT TRIMMER W/(11) 24" SAWS

## MOISTURE DETECTOR

**SCS MC PRO 2400** NON-CONTACT MOISTURE DETECTOR

## BIN SORTER (SAWMILL)

**IRVINGTON MOORE** 41-BIN J-BAR SORTER, PNEUMATIC TOP GATES, 5-STRAND CONVEYOR, TAKE AWAY CONVEYOR

## STICKER STACKER

**LUNDEN INDUSTRIES INC** STICKER STACKER, 14' X 16' 6-STRAND INFEED CHAIN, 42" X 20' LUG FEED STICKER CHAIN



**CAMBIO**  
**30" 6-ARM DEBARKER**



**NEWNES**  
**BOARD EDGER**

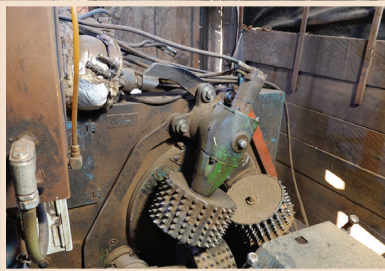


**2022 RAPTOR INTEGRATION**  
**20' OPTIMIZER/SCANNER**



**KOCKUMS**  
**5' HORIZONTAL RESAW**

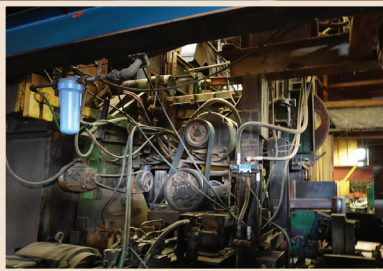
# NO MINIMUMS - NO RESERVE



**CAMBIO 18"**



**ROSSERHEAD**



**TEMPOSONIC POSITIONED  
VERTICAL TWIN BANDMILLS**



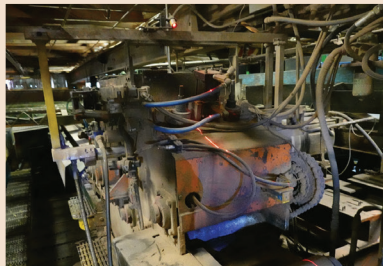
**30"X16' 3-KNEE TEMPOSONIC  
POSITIONED CARRIAGE**



**COMACT LUG LOADER**



**NEWNES/RAPTOR INTERGRATED  
SCANNING**



**SHERMAN 4TA18**



**DENIS 12" GANG**



**8'X21'X18" STEP FEEDER**



**15' 5-ARM STAR SWEEP**



**LUNDEN STACKER**



**38'X24' 10-STRAND  
INFED LOG DECK**



**(2) 12'X19' STEP FEEDERS**



**43'X19' 6-STRAND  
SURGE DECK**



**20'X36' 6-STRAND  
INFED LOG DECK**



**38'X24' 10-STRAND  
INFED LOG DECK**



**CAE NEWNES  
24' LINE SHAFT TRIMMER**



**KLAMATH MACHINE WORKS 7FTRH NO.41  
7' RIGHT HAND HEAD RIG**

Go To [Murphyauction.com](http://Murphyauction.com) For A Full List Of Items

# PYRAMID MOUNTAIN LUMBER

## INFEED LOG DECKS

38' X 24' 10-STRAND INFEED LOG DECK (TO 18" DEBARKER)  
38' X 12' 10-STRAND INFEED DECK (TO 18" DEBARKER)  
16' X 36' 6-STRAND INFEED LOG DECK  
20' X 36' 6-STRAND INFEED LOG DECK W/LOG STOP & LOADER  
15' X 8' 6-STRAND LOG DECK

## LOG CONVEYORS & SURGE DECKS

44' X 10' 10-STRAND INCLINE DECK CONVEYOR W/LUG CHAINS  
43' X 19' 6-STRAND SURGE DECK W/TOSHIBA 10 HP MOTOR & FALK GEAR DRIVE  
30' X 14' 5-STRAND SURGE DECK W/LOG STOPS  
20' X 14' 4-STRAND SURGE DECK W/LOG STOP  
10' X 18' LOG DECK (TO ROSSER HEAD)  
50' X 14' 4-STRAND LOG DECK (TO HEAD RIG)

## STEP FEEDERS

(2) 12' X 19' STEP FEEDERS W/TOSHIBA 30 HP HYDRAULIC PUMP (#1) & TECO 75 HP HYDRAULIC PUMP (#2)  
8' X 21' X 18" STEP FEEDER (TO END DOG SYSTEM)

## LOG HAULS

(2) 20' LOG HAULS W/12" BOX CHAIN (TO 18" DEBARKER)  
40' LOG HAUL W/12" BOX CHAIN (OUTFEED FOR 18" DEBARKER)  
30' LOG HAUL W/12" BOX CHAIN (TO 46" CUT-OFF SAW)  
16' X 12" LOG HAUL W/SKK MOTOR  
45' X 15" 2-STRAND LOG HAUL W/5-ARM STAR SWEEP TO REJECTION BIN, TOSHIBA MOTOR, FALK DRIVE  
50' X 12" LOG HAUL W/TOSHIBA MOTOR & FALK DRIVE  
50' X 12" LOG HAUL W/12" BOX CHAIN  
40' LOG HAUL W/12" BOX CHAIN & FLIGHTS  
16' LOG HAUL W/12" BOX CHAIN & FLIGHTS  
40' X 12" 2-STRAND LOG HAUL W/4-ARM KICKER  
29' LOG HAUL W/12" BOX CHAIN & 6-ARM LOG KICKER  
60' X 36" BELT CONVEYOR W/(2) SETS OF HYDRAULIC LOG KICKERS

## CUT-OFF SAWS

46" CUT-OFF SAW W/HYDRAULIC HOLD DOWN, TECO 75 HP DRIVE,  
22' X 22" HOURGLASS ROLLCASE W/TOSHIBA 15 HP MOTOR & REX GEAR BOX, 5-POSITION HYDRAULIC LOT STRAPS  
72" INSERT TOOTH CUT OFF SAW, 60 HP TOSHIBA MOTOR, HYDRAULIC CLAMP  
BAR STYLE CUT-OFF SAW

## STAR SWEEPS

16' 5-ARM STAR SWEEP  
4-ARM STAR SWEEP  
15' 5-ARM STAR SWEEP

## COMPRESSORS & ACCESSORIES

**QNW QNW-V-1521-F/S/SICP/QNW-C15** 200 HP ROTARY SCREW COMPRESSOR, TOSHIBA MOTOR, ALLEN BRADLEY PREVIEW PLUS CONTROLS, REMOTE COOLING UNIT, S/N: 1106516388/1106113172  
**QNW QNW-1000B/SICP-QNW-C14A** ROTARY SCREW AIR COMPRESSOR  
**QNW QNW-V-50-F/S/SICP-QNW-C170** TOSHIBA 50 HP ROTARY SCREW COMPRESSOR, REMOTE COOLING  
**QUINCY QNW-1011-F/S/SICP-QNW-C16** 200 HP ROTARY SCREW AIR COMPRESSOR, ALLEN BRADLEY PANEL VIEW PLUS 70V CONTROLS, COOLING FAN (PLANNER BUILDING), S/N: 1106516389/1106113173  
**QUINCY 740-B** 150 HP ROTARY SCREW AIR COMPRESSOR W/PNEUMATECH AIR DRYER & SURGE TANK  
**PNEUMATECH PE-2600** HEAT REACTIVATED REGENERATIVE AIR DRYER & PRESSURE VESSEL  
**PNEUMATECH PE-250** HEAT ACTIVATED REGENERATIVE AIR DRYER & PRESSURE VESSEL

## ROLL CASES & MILL CONVEYORS

10' X 18' 6-STRAND OUTFEED DECK (FROM RESAW)  
80' X 36" CONVEYOR BELT (FROM RESAW)  
65' X 36" POWER ROLLER CONVEYOR (FROM HEAD RIG)  
24' X 13' 5-STRAND INCLINE CONVEYOR W/ROOFTOP CHAIN (FROM HEAD RIG)  
18' X 30" POWER ROLLER CONVEYOR (TO RESAW)  
26' X 14' 6-STRAND INCLINE CONVEYOR  
50' X 24" BELT CONVEYOR (FROM RESAW)  
16' X 16' 8-STRAND CONVEYOR W/H782 ROOFTOP CHAIN (BY GANG SAW)  
5' X 16' 6-STRAND CONVEYOR  
9' X 16' 5-STRAND CHAIN CONVEYOR  
16' 6-STRAND CHAIN CONVEYOR  
16' 7-STRAND CONVEYOR (NEWNES EDGER)  
ASSORTED CHAIN CONVEYORS  
7" X 16' 7-STRAND CHAIN CONVEYOR  
4-STRAND 90' CONVEYOR TO SORTER  
26' X 16' INCLINE FEED CONVEYOR FOR SORTER  
**DENIS** 18' X 40" INFEED ROLLCASE  
18' X 60" EVEN END ROLLCASE  
60" DIA X 20' 7 EVEN END ROLLCASE  
**COMACT** 14' X 18' 10-STRAND LUG LOADER CHAIN W/(6) ROLLS  
10-STRAND LUG CHAIN W/ROLLCASE  
60" X 18' 6-ROLL UNEVEN ROLL CONVEYOR  
**COMACT** 8' X 16' SURGE DECK

## METAL DETECTORS

**MDI TWA 2000** METAL DETECTOR W/8' X 24" FIBERGLASS TUB  
**MDI** METAL DETECTOR W/4' FIBERGLASS TUB  
**MDI** METAL DETECTOR W/FIBERGLASS TUB

## UNSCRAMBLERS

(2) 16' UNSCRAMBLERS  
20' 5-STRAND UNSCRAMBLER  
12' X 20' 6-STRAND UNSCRAMBLER

## HYDRAULIC UNITS

**BERENDSEN FLUID POWER** 260-GAL HYDRAULIC TANK, TOSHIBA 75 HP PUMP MOTOR, EQP 60 HP PUMP MOTOR  
124-GAL HYDRAULIC PUMP TANK UNIT, TOSHIBA 40 HP  
**PAUL MUNROE RUCKE** 500-GAL, 2,500 PSI HYDRAULIC SYSTEM, TOSHIBA 15 HP  
**NEWNES** 508-GAL HYDRAULIC PUMP, 3-HEAD PUMPS, 40 HP BALDOR HYDRAULIC PUMP UNIT, 119-GAL TANK, TEC 30 HP DRIVE  
HYDRAULIC PUMP UNIT, 327-GAL, (2) DRIVE PUMPS  
**NEWNES** HYDRAULIC PUMP, DUAL HEAD

## CHIPPERS

**PRECISION** 60" CHIPPER W/300 HP/1,185 RPM/N587UZ FRAME, S/N: C-116  
**PRECISION 66-17** 60" CHIPPER, TECO 250 HP, S/N: 0-1335  
**SUMNER** 66" CHIPPER W/WESTINGHOUSE 125 HP DRIVE, S/N: 27626

## HOGS

**JEFFREY 55WB** HOG W/US ELECTRIC 400 HP MOTOR, 1,185 RPM, S/N: 11100  
**JEFFREY 55WB** HOG 300HP/1180 RPM/509ZDC97 SBR FRAME, S/N:12850

## CHIP SCREENS

**KOCKUMS KS77** 7'X7' 3-DECK CHIP SCREEN, 5 HP DRIVE  
**BM&M 8X122D** 8'X12' 2-DECK CHIP SCREEN, S/N: 16067  
**PRECISION MOD PCS66** 66" X 66" 2-DECK SCREEN W/LINCOLN 2 HP DRIVE, S/N: S-597  
**NICHOLSON** 6'x12' 2 DECK CHIP SCREEN, HIGH SPEED, S/N: 6281

## BLOWERS

**RADER PNEUMATIC P68-382** BLOWER W/SILENCER TOSHIBA 125 HP DRIVE  
**TOSHIBA** CHIP BLOWER

## CHIP FEEDER

**RADAR** CHIP FEEDER



James G. Murphy Co.  
425.486.1246  
Murphyauction.com



# NO MINIMUM - NO RESERVE



**JEFFREY 55WB**



**KOCKUMS KS77**



**BAR STYLE CUT-OFF SAW**



**USNR KILN MANAGEMENT CONTROLS**



**MDI TWA 2000**



**COMACT**



**10-STRAND LUG CHAIN**



**COMACT**



**MDI**



**MDI**



**16' UNSCRAMBLER**



**SUMNER B12562**



**QUINCY  
QNW-1011-F/S/SICP-QNW-C16**



**PNEUMATECH PE-2600**



**NEWNES**



**PRECISION**



**JEFFREY 55WB  
HOG**



**IRVINGTON MOORE  
41-BIN J-BAR SORTER**

Go To [Murphyauction.com](http://Murphyauction.com) For A Full List Of Items

# PYRAMID MOUNTAIN LUMBER

## VIBRATORY CONVEYORS

20' X 18" VIBRATORY CONVEYOR  
30' X 18" VIBRATORY CONVEYOR  
**VIBRAPRO** 75' X 18" VIBRATORY CONVEYOR

## WASTE CONVEYORS

20'X12" BOX CHAIN CONVEYOR W/DRIVE  
40'X12" BOX CHAIN INCLINE CONVEYOR W/TOSHIBA TO REX DRIVE  
60' X 18" BOX CHAIN CONVEYOR W/FLIGHTS, FALK DRIVE  
ASSORTED WASTE CONVEYORS  
ASSORTED WASTE CONVEYORS UNDER DEBARKERS  
MAIN WASTE CONVEYOR UNDER SAW MILL  
ASSORTED TAKE AWAY CONVEYORS  
20' X 16" INCLINE BELT CONVEYOR  
APPROX 100' X 12' BOX CHAIN CONVEYOR

## KILNS & SUPPORT EQUIPMENT

(6) STEAM FIRED ALUMINUM DOUBLE TRACK KILNS W/2022 KILN MANAGEMENT CONTROLS  
**USNR** KILN MANAGEMENT CONTROLS INCLUDING SOFTWARE, PLC'S, (6) A/C ELECTRICAL CABINETS, (16) POWERFLEX 755 DRIVES, SCSFP FINNA SENSORS, TRIAC INLINE SOFTWARE CONTROLLED VALVES  
KILN RAIL  
KILN CARTS  
KILN STICKER RACKS  
KILN STICKERS

## PLANER, ROLLCASES & SLOW DOWN BELTS

**YATES A63** PLANER MATCHER, 8"X15" CAPACITY, 6-HEADS, 22-KNIFE HEADS W/KEY KNIFE CONVERSION, 150 HP TOP/75 HP BOTTOM, 35&50 HP SIDE HEADS, 50HP NOTCHER HEADS, APPROX. 20' DUAL PINEAPPLE FEED ROLL TABLE, W/WOLFFTEK CONVERSION, LIVE BRIDGE, OUTFEED BELT TO 48"X120" SLOW DOWN BELT, NUMEROUS SPARE HEADS & PARTS  
**YATES AMERICAN A62** PLANER MATCHER, 8"X20" CAPACITY, 6-HEADS, 12-KNIVES, 70 HP TOP/35HP BOTTOM, APPROX. 25 HP SIDE & 35 HP MATCHER HEADS, 20' SINGLE PINEAPPLE FEED TABLE, NUMEROUS SPARE HEADS & PARTS

## MOLDER

**MATTISON 229** 5-HEAD MOLDER W/POWER INFEED DRIVE

## CONVEYORS (PLANER)

12' HYDRAULIC BREAKDOWN HOIST  
20' X 38" 2-STRAND CONVEYOR W/(4) 20' ROLLS (OUTSIDE SAMUEL BANDER)  
16' X 15' 5-STRAND CONVEYOR W/TOSHIBA 15 HP MOTOR & REXNORD DRIVE (OUTSIDE SAMUEL BANDER)  
12' X 6' 3-ARM BREAKDOWN HOIST W/20' X 6' ROLLCASE  
30' X 14' 4-STRAND CONVEYOR W/REX 138 ROOFTOP CHAIN (FEEDS A62 PLANER)  
14' X 24" EVEN END ROLLCASE (TO BRIDGE AT A62 PLANER)  
14' X 7" 8-STRAND LANDING TABLE W/1478B ROOFTOP CHAIN  
54" 7-STRAND DECLINE BELT CONVEYOR (OFF PLANER)

## LUG LOADER

**COMACT 22'** LEFT HAND FEED LUG LOADER SYSTEM W/SHARP CHAIN EVEN END ROLLS, KINETIX 6500 DRIVES, PROGRAMMABLE PLC

## GRADING SYSTEM

**2019 COMACT GRADE EXPERT OPTIMIZER 7500B** AUTO GRADING SCANNER, 20'W 4-STRAND GO PULSE LUG INCLINE CHAIN, PINESHOP SOFTWARE, COMACT 12' 6-STRAND DECLINE CONVEYOR, S/N: 120905-7500N-2019-8

## TRIM SAW (PLANER)

**NEWNES TA-20-LH-97** 20' LINE SHAFT PLANER TRIMMER W/75 HP MOTOR, (9)AIRLFT SAWS, APPROX. 18'-5 STRAND 81X CHAIN INFEED TRANSFERS W/(6) EVEN END ROLLS, COMACT PADDLE FENCE, APPROX. 30' 9-STRAND 81X LUGGED FEED THROUGH TRANSFER W/(8) EVEN END ROLLS, S/N: 92-601-JA

## SORTER

**COLUMBIA CONSTRUCTION** 8-TRAY SORTER W/RAPTOR CONTROLS, (6) 16' TRAYS, APPROX 120' LONG, (1) 8' TRAY, (1) 12' TRAY, RAPTOR SOFTWARE, DIVERTER TO DRY CHAIN

## GRADE STAMP SYSTEM

**SAMUEL** GRADE STAMP SYSTEM W/DRO & BULE INK BOX

## END STACKER

END STACKER W/LANDING TABLE, SWEED, TRANSFER BELTS, FORKS, CARRIAGE, OUTFEED ROLLS, EVEN ENDING ROLLS, RAPTOR SOFTWARE

## STICKER RECOVERY SYSTEM

6-STRAND ROOFTOP TRANSFER

## RIP SAW

RIP SAW W/POWER FEED 80" X 64" TABLE, 20 HP

## BANDING & WRAPING SYSTEMS

**2023 SAMUEL SLP25(6)/VK30** LUMBER STRAP & PAPER WRAP SYSTEM, 30' X 54" INFEED ROLLCASE W/(2) TOSHIBA 5 HP MOTORS, (2) REXNORD DRIVES, 64"W X 54"H BUMP PLATE W/7.5 HP HYDRAULIC SYSTEM, BALDOR 15 HP HYDRAULIC SYSTEM FOR BANDING UNIT, STICKER STACKER, AUTOMATION DIRECT DIGITAL TOUCH SCREEN CONTROLS, OVERHEAD PAPER FEEDER/LOADER WITH CUTTER HEAD, 42' X 38" 2-STRAND OUTFEED, TOSHIBA 10 HP MOTOR W/REXNORD DRIVE, 480V, 3 PHASE, S/N: 40105  
**MAC-FAB M EA44 TIGER 844** BANDING/WRAPING SYSTEM, 12' X 54" 6-ROLLS, INFEED ROLLS, HYDRAULIC UNIT STOP, 54" X 20' OUTFEED ROLLCASE, (8) ROLLS, MANUAL PAPER STATION

## FILING & GRINDING ROOMS

**ARMSTRONG NO. 4** R.H. BANDSAW SHARPENER W/58-B FILING CLAMP, S/N: 15311  
**ARMSTRONG NO. 4** L.H. BANDSAW SHARPENER W/58-B FILING CLAMP, S/N: 14901  
**ARMSTRONG NO. 1760** CIRCLE SAW SHARPENER, S/N: 5448  
**ARMSTRONG NO 4** RH BANDSAW SHARPENER, S/N: 15508  
**(2) ARMSTRONG** LEVELERS W/SIDE PRO AND DIGITAL READ OUT, S/N: 20530 & 20379  
**ARMSTRONG 8J** AUTOMATIC BANDSAW SHARPNER, S/N: 15101  
**ARMSTRONG 4LH** BANDSAW SHARPENER S/N: 9443, **ARMSTRONG 58-B** FILING CLAMP  
**ARMSTRONG 4DRH** BANDSAW SHARPENER, S/N: 14884, **ARMSTRONG 58** FILING CLAMP  
**ARMSTRONG 14SDSR 84** SUPER DUTY STRETCH ROLL  
**ARMSTRONG 3-10** STRETCHER ROLL, S/N: 3233  
**ARMSTRONG 85** AUTO TIPPER, S/N: 17211  
**ARMSTRONG** STRETCHER ROLLS, S/N: 2018A  
**ARMSTRONG** SIDE PRO, S/N: 20123  
**ACME 104-31** CIRCLE SAW SHARPENER  
**SIMONDS RMO 942** BANDSAW LEVELER, S/N: 97942318  
**WRIGHT MACHINE 350AHD** SIDE SHARPENER, S/N: 311  
**WRIGHT MACHINE W-550** AUTO DUAL SIDE SHARPENER  
**WRIGHT MACHINE TALON TW-2** WELDER/ANNEALER  
**(2) WRIGHT MACHINE TOOL P-3** PROFILE SHARPENERS, 230V, 3 PHASE, S/N: 10105 & L9705  
**ARMSTRONG 12" X 48" ANVIL**  
(3) 18" DIA ANVILS  
SURFACE GRINDER  
**(3) IMW 240** BABBITT SURFACE GRINDERS  
BABBITT POT & BABBITT  
SPARE BANDSAW BLADES  
HOE GRINDER



James G. Murphy Co.  
425.486.1246  
Murphyauction.com



# NO MINIMUMS - NO RESERVE



**KILN CARTS**



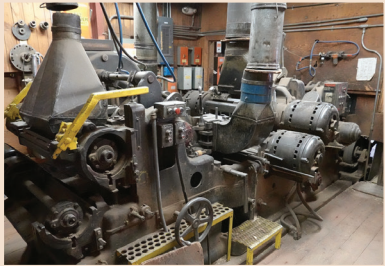
**PINEAPPLE TABLE**



**COMACT LUG LOADER**



**NEWNES TA-20-LH-97**



**YATES AMERICAN A62**



**MATTISON 229**



**SAMUEL BANDER**



**COLUMBIA CONSTRUCTION**



**ARMSTRONG NO.4 R.H.**



**ARMSTRONG NO.1760**



**ARMSTRONG 85**



**WRIGHT MACHINE W-550**



**ARMSTRONG NO.4 L.H.**



**ARMSTRONG LEVELER**



**WRIGHT MACHINE TALON TW-2**



**WRIGHT MACHINE TOOL P-3**



**BM&M 8X122D  
2-DECK CHIP SCREEN**



**(6) STREAM FIRED ALUMINUM DOUBLE TRACK  
KILNS W/2022 KILN MANAGEMENT CONTROLS**

Go To [Murphyauction.com](http://Murphyauction.com) For A Full List Of Items

# PYRAMID MOUNTAIN LUMBER

## ELECTRICS

**WFG SSW06 SOFT START** (FOR MCDONOUGH RESAW)  
**(3) WEG SSW900 SOFT STARTS**  
**WEG SSW06 SOFT START**  
**ALLEN BRADLEY POWER FLEX 10 SOFT START**  
**(3) POWERFLEX 755 DRIVES**  
**(5) ALLEN BRADLEY 6-SECTION MCC'S**  
**ALLEN BRADLEY 8-SECTION MCC**  
**ALLEN BRADLEY 7-SECTION MCC**  
**GENERAL ELECTRIC 7-SECTION MCC**  
**GE 3-SECTION MCC**  
**GE 8000 6-SECTION MCC**  
**SQUARE D 10-SECTION MCC**  
ASSORTED MCC'S  
**CH 4-SECTION MCC**  
**ALLEN BRADLEY 2-SECTION MCC**  
**ALLEN BRADLEY 3-SECTION MCC**  
**(2) AB 2-SECTION MCC'S**  
**ALLEN BRADLEY 4-SECTION MCC**  
**SQUARE D SWITCH GEAR**  
**SQUARE D SWITCH PANEL**  
**ALLEN BRADLEY COMPRESSOR SWITCH GEAR**  
**(6) ALLEN BRADLEY DRIVES**

## ASSORTED STORES, TOOLS & EQUIPMENT:

4-ARM BREAK DOWN HOIST, ASSORTED BUILDINGS THOUGHOUT PROPERTY, ASSORTED CHIP BINS, DUST COLLECTION EQUIPMENT, STICKER RACKS, STEAM PIPE THROUGHOUT MILL, OREGON CHAINSAW FILE, SWEDE BANDING 510AE STRAP CHIPPER, S/N: 16232, (15+/-) DUMP HOPPERS, WACKER PLATE COMPACTOR, BALDOR DUAL WHEEL GRINDER, WILTON BANDSAW, UNI-HYDRO INC 50-14 56-TON IRON WORKER, DRAGON SQ100F PIPE MACHINE, (3) DRILL PRESSES, SONIC AIRE 2 AIR MOVER, OXY/ACET KIT, (3) DEWALT MITER SAWS, HOBART HANDLER 190 230V WIRE FEED WELDER, MILLER BOBCAT 225NT 8,000 WATT PORTABLE WELDER/GENERATOR, (11) MILLER MILLERMATIC WELDERS, (2) LINCOLN IDEALARC R3R-300 WELDERS, NORCO HOBART HANDLER 120 POWER SOURCE & WIRE FEEDER, EDCO CONCRETE SAW, MILWAUKEE MAG DRILL, IPE WRENCHES, STIHL HOT SAW, BEARING PULLER, RATCHET HOISTS, (12+/-) CORDLESS MILWAUKEE GREASE GUNS, (2) US GENERAL TOOLBOXES W/CONTENTS, MULTI-ROLL 6-BOTTOM SKATE SET, CLIMAX KEY WAY CUTTER, ASSORTED WIRE, HYDRAULIC CYLINDER STORES, SPROCKET RACKS W/SPROCKETS, BEARING STORES TO INCLUDE: TIMKEN, FAG, SKF, KOYO, DODGE, ROLL-AWAY, OIL SEALS, TIRE CHAINS, PARTS HOUSE, NEW TIRE INVENTORY, DEBARKER PARTS, ELECTRIC MOTOR INVENTORY & ASSORTED GEAR BOXES

## ROLLING STOCK

**1995 LETOURNEAU 4594 4-WHEEL LOG STACKER, 45-TON - 90,000 LBS RAIL VERTICAL, LOAD 48" FROM CARRIAGE DETROIT DIESEL, 33.25-35 FRONT/REAR, S/N: 2003**  
**1985 LETOURNEAU 2494-SS LOG STACKER, CUMMINS NTC350, 33.25-35 FRONT/REAR, S/N: 1034/4**  
**2007 DOOSAN SOLAR 225LL HEEL BOOM LOG LOADER, HYDRAULIC SWIVEL GRAPPLE, DOOSAN DIESEL, 27-1/2" DOUBLE GROUSER TRACK, CAB CYLINDER GUARD, HOUR METER READS: 9,902, S/N: DHKHEBD0E60001058**  
**1991 JOHN DEERE 892LL HEEL BOOM LOG LOADER, HYDRAULIC SWIVEL GRAPPLE, PIERCE PACIFIC HLB2541 BOOM, JD DIESEL, 31-1/2" TRIPLE GROUSER TRACK, CAB GUARD, HOUR METER READS: 5,040, S/N: FF892PL006328**  
**1999 CATERPILLAR 320BLL HEEL BOOM LOG LOADER, HYDRAULIC SWIVEL GRAPPLE, CAT DIESEL, 27-1/2" TRIPLE GROUSER, CAB & CYLINDER GUARD, HOUR METER READS: 47,678, S/N: 6LS00330**  
**1980 CATERPILLAR 235 HEEL BOOM LOADER, YOUNG BOOM & HYDRAULIC SWIVEL GRAPPLE, CAB GUARD, ENCLOSED CAB, 24-1/2" DOUBLE GROUSER TRACKS, HOUR METER READS: 29,863, S/N: 32K-027-43**  
**2005 CATERPILLAR 320CFMHW HEEL BOOM LOG LOADER, CAT DIESEL, 27-1/2" DOUBLE GROUSER TRACKS, ENCLOSED CAB, HOUR METER READS: 9,389, S/N: CAT0320CCSAH01016**  
**1999 HYSTER H210XL2 17,550 LB DUAL PNEUMATIC FORKLIFT, 216" 2-STAGE MAST, SIDE SHIFT, A/C, 6 CYL PERKINS DIESEL, MONOTROL, ENCLOSED CAB, HOUR METER READS: 55,005, S/N: E007D03736W**

**2002 HYSTER H210HD 18,450 LB DUAL PNEUMATIC FORKLIFT, 212" 2-STAGE MAST, SIDE SHIFT, DUAL FORK POSITIONERS, LUMBER FORKS, FINGERTIP CONTROLS, 6 CYL DIESEL, MONOTROL, ENCLOSED CAB, HOUR METER READS: 24,561, S/N: F007E02187Z**  
**2020 HYUNDAI 1180-7A 24,251 LB DUAL PNEUMATIC FORKLIFT, 197" 2-STAGE MAST, SIDE SHIFT, DUAL FORK POSITIONERS, CUMMINS DIESEL, 3 SPD, FWD/REV, ENCLOSED CAB (NEEDS RADIATOR TOP TANK REPAIRED), HOUR METER READS: 23,497, S/N: HHKHFT09LF0000058**  
**1989 CATERPILLAR V200B 20,000 LB PNEUMATIC FORKLIFT, 218" 2-STAGE MAST, SIDE SHIFT, CAT 3208 DIESEL, 3 SPD, FWD/REV, ENCLOSED CAB, HOUR METER READS: 76,137, S/N: 1DK00138**  
**1984 HYSTER H225H 21,700 LB DUAL PNEUMATIC FORKLIFT, 217" 2-STAGE MAST, SIDE SHIFT, DETROIT DIESEL, MONOTROL, ENCLOSED CAB (UNIT #2), HOUR METER READS: 8,747, S/N: C007D01704E**  
**CATERPILLAR V225B 22,500 LB DUAL PNEUMATIC FORKLIFT, 216" 2-STAGE MAST, SIDE SHIFT, LUMBER FORKS, CAT 3208, ENCLOSED CAB, HOUR METER READS: 1,945, S/N: 70Y00729**  
**1992 CATERPILLAR V225B 18,600 LB PNEUMATIC FORKLIFT, 218" 2-STAGE MAST, SIDE SHIFT, CAT DIESEL, HOUR METER READS: 21,023, S/N: 1DK00376**  
**1988 CATERPILLAR V225B 22,500 LB DUAL PNEUMATIC FORKLIFT, 218" 2-STAGE MAST, SIDE SHIFT, FORK POSITIONERS, CAT3208, HOUR METER READS: 1,375, S/N: 70400902**  
**1998 HYSTER 210XL 16,500 LB DUAL PNEUMATIC FORKLIFT, 212" 2-STAGE MAST, SIDE SHIFT, LUMBER FORKS, 6 CYL DIESEL, ENCLOSED CAB, HOUR METER READS: 7,839, S/N: E007D03362V**  
**1992 CATERPILLAR V225B 22,500 LB PNEUMATIC FORKLIFT, 2-STAGE MAST, SIDE SHIFT, 3208 CAT DIESEL, ENCLOSED CAB, HOUR METER READS: 48,318, S/N: 10K0037**  
**1995 HYSTER 230XL2 DUAL PNEUMATIC FORKLIFT, 214" MAST, SIDE SHIFT, 6 CYL PERKINS, MONOTROL, HOUR METER READS: 7,561, S/N: E007D022245**  
**1995 HYSTER H190XL 19,000 LB DUAL PNEUMATIC FORKLIFT, 212" 2-STAGE MAST, SIDE SHIFT, LUMBER FORKS, PERKINS DIESEL, MONOTROL, ENCLOSED CAB, HOUR METER READS: 8,801, S/N: E007D02405S**  
**1999 HYSTER H210XL2 20,000 LB DUAL PNEUMATIC FORKLIFT, 212" 2-STAGE MAST, SIDE SHIFT, LUMBER FORKS, 6 CYL DIESEL, MONOTROL, ENCLOSED CAB, HOUR METER READS: 6,459, S/N: E007D03729W**  
**2010 HYUNDAI 110D-7E 24,500 LB DUAL PNEUMATIC FORKLIFT, 177" 2-STAGE MAST, SIDE SHIFT, DUAL FORK POSITIONERS, DIESEL 200, ENCLOSED CAB, HOUR METER READS: 8,782, S/N: HHKHFT05AD00327**  
**2012 HYUNDAI 110D-7E 24,500 LB DUAL PNEUMATIC FORKLIFT, 197" 2-STAGE MAST, SIDE SHIFT, DUAL FORK POSITIONERS, CUMMINS DIESEL, ENCLOSED CAB, HOUR METER READS: 16,247, S/N: HHKHFT05KC0000174**  
**2000 HYSTER H210XL2 19,000 LB DUAL PNEUMATIC FORKLIFT, 212" MAST, SIDE SHIFT, LUMBER FORKS, PERKINS DIESEL, MONOTROL, ENCLOSED CAB, S/N: E0U7T04258X**  
**MITSUBISHI FG40A 8,000 LB, 187" 3-STAGE MAST, SIDE SHIFT, PROPANE, SOLIDMATIC TIRES, S/N: AF29C00059**  
**MITSUBISHI FG40K-LP 8,000 LB, 147" 2-STAGE MAST, SIDE SHIFT, SOLIDMATIC TIRES, PROPANE, HOUR METER READS: 13,549, S/N: AF2910302**  
**1998 HYSTER H70C 7,000 LB PNEUMATIC FORKLIFT, 145" 2-STAGE MAST, SIDE SHIFT, FORK TWIST PROPANE, ODOMETER READS: 4,436, S/N: C5D15349V**  
**CATERPILLAR V180B 18,000 DUAL PNEUMATIC FORKLIFT, 218" MAST (PARTS MACHINE ONLY), S/N: 68400641**  
**HYSTER H165 PNEUMATIC FORKLIFT, 2-STAGE MAST, LUMBER FORK (PARTS MACHINE, NON-RUNNING)**  
**TOW MOTOR PNEUMATIC FORKLIFT (PARTS ONLY, NON-RUNNING)**  
**1983 CATERPILLAR 980C LOG LOADER, MEDFORD LOG FORKS, 29.5R25, EROPS, HOUR METER READS: 9,835, S/N: X05141**  
**1989 CATERPILLAR 988B LOG LOADER, MEDFORD LOG FORKS, 35/65R33, EROP, CAB GUARD, S/N: 50W1387**  
**CATERPILLAR 966C LOG LOADER, YOUNG HYDRAULIC LOG FORKS, 18.0-25, EROPS, S/N: 9K41820516**



# NO MINIMUM - NO RESERVE



CATERPILLAR 320BLL



1980 CATERPILLAR 235



CATERPILLAR 320BLL



HYSTER H210XL2



1984 HYSTER H225H



1989 CATERPILLAR V200B



HYUNDAI 1180-7A



2002 HYSTER H210HD



CATERPILLAR V225B



1995 HYSTER 230XL2



1995 HYSTER H190XL



MITSUBISHI FG40A



2006 CATERPILLAR 252B



2012 BOBCAT S850



P&H OMEGA



HYUNDAI 110D-7E



JOHN DEERE 892LL



CATERPILLAR 980C

Go To [Murphyauction.com](http://Murphyauction.com) For A Full List Of Items

# PYRAMID MOUNTAIN LUMBER

**P&H OMEGA** 18-TON HYDRAULIC RT CRANE, 3-SECTION BOOM, JOHNSON 20-TON BLOCK, 4X4X4, (4) HYDRAULIC OUTRIGGERS, ENCLOSED CAB, S/N: 45799

**1996 JOHN DEERE 410 4X4** TURBO BACKHOE LOADER, GP BUCKET, 30" BUCKET, ENCLOSED CAB, HOUR METER READS: 1,781, S/N: T0410DG795023

**1998 CATERPILLAR 980G** WHEEL LOADER, CHIP BUCKET, ENCLOSED CAB, CAB GUARD, 29.5R25, HOUR METER READS: 6,916, S/N: 9CM00843

**CATERPILLAR 966C** WHEEL LOADER, HOUR METER READS: 9,835, S/N: X051410

**2012 BOBCAT S850** SKID STEER LOADER, 4 CYL BOBCAT DIESEL, SOLID TIRE, QC BUCKET, BACK-UP CAMERA, ENCLOSED CAB, S/N: ACS711820

**2006 CATERPILLAR 252B** SKID STEER LOADER, CAT DIESEL, GP QR BUCKET, ENCLOSED CAB, CAB GUARD, HRT, HOUR METER READS: 1,643, S/N: CAT0252BPSP02776

**1996 MANITOU MVT1340L** 6,000 LB TELEHANDLER, 4X4X4, 3-STAGE MAST W/3RD VALVE, QC FORK ATTACHMENT, PERKINS DIESEL, ROPS, HOUR METER READS: 15,435, S/N: 117312

**1998 GENIE S-40/4WD** MANLIFT, 4 CYL DUAL FUEL, HOUR METER READS: 7,010, S/N: 2039

**GROVE MZ66B 4X4** MANLIFT, 4 CYL DUAL FUEL R/T MANLIFT, HOUR METER READS: 8,800, S/N: 30182

**WEIGH-TRONIX ZM305-SG1** 120,000 LB TRUCK SCALE, APPROX 10' X 66 DECK, BMS7010-100T, TRUCK SCALE W/PC PRINTER, 120,000 LB CAP X 20 LB

1981 SHOP BUILT 86" X 21' DECK, T/A TRAILER, S/N: SNTR41486MT

1990 T/A WATER PUMP TRAILER, 4 CYL GAS DRIVE PUMP, (2) HOSE REELS W/NOZZLES, S/N: TR52136MT

SHOP BUILT S/A PUMPER TRAILER, GAS DRIVE PUMP, (1) HOSE REEL W/NOZZLE, FLYING EYES, S/N: TR79144MONT

SHOP BUILT S/A PUMPER TRAILER, GAS DRIVE PUMP, (2) HOSE REELS, FLYING EYES, S/N: TR93295MONT

**TENNANT 280** PROPANE SWEEPER (NON-RUNNING)

(2) **POLARIS INDY LITE GT** SNOWMOBILES, ODOMETERS READ: 1,413 & 1,895, S/N: 2210757 & 2210759

**2011 FORD F250** PICKUP, S/N: 1FT7X2B68BEC98276

**2012 FORD F150 4X4** EXT CAB PICKUP, V8, AUTO, ODOMETER READS: 175,969, S/N: 1FTFXEF9CFB59142

**2006 DODGE RAM 1500 4X4** QUAD CAB 4X4 PICKUP, V8, AUTO, S/N: 1D7HU182116S555657

**2001 FORD F350** QUAD CAB 9' FLATBED, V8, AUTO, ODOMETER READS: 240,050, S/N: 1FTSW31L71ED50988

**1989 FORD F250 4X4** FLATBED, AUTO, FLINK MOD LMC68FC SAND SPREADER, ODOMETER READS: 70,241, S/N: 1FTHF26G1KPA75589

**2004 FORD F150** EXT CAB 4X4 PICKUP (PARTS TRUCK), S/N: 1FTRX14W24NB78315

**1987 CHEV STROM DELUX 20 4X4** SERVICE BODY, V8, 4 SPD, ODOMETER READS: 712, S/N: 1GCGV24K5HS133957

**1979 FORD 3/4** DUMP TRUCK, V8, 4 SPD, ODOMETER READS: 59,337, S/N: F26HRDE3349

**1979 GMC 7000** FIRE TRUCK, DIESEL, AUTO CHAMPION 1,000 GPM PUMP (HOUR METER READS: 691), HOSE & REEL, ODOMETER READS: 73,572, S/N: 1GDM7D1G2FV513595

**1966 MAC MB600** T/A WATER TRUCK, GORMAN RUPP PUMP, FRONT & REAR SPRAY BAR (PARTS TRUCK), S/N: 1297

(2) TRAILER LOADERS, WELDED FRAME AND MUCH MORE!



**1985 LETOURNEAU 2494-SS**



**1989 CATERPILLAR 988B**



**CATERPILLAR 966C**



**HYSTER H70C**



**MITSUBISHI FG40K-LP**



**1996 MANITOU MVT1340L**



**1998 CATERPILLAR 980G**



**1996 JOHN DEERE 410**



# NO MINIMUMS - NO RESERVE



1998 GENIE S-40/4WD



GROVE MZ66B



IMW 240



WEG SSW90



WEIGH-TRONIX ZM305-SG1



TRAILER LOADERS



ASSORTED CHIP BINS



ALLEN BRADLEY



UNI-HYDRO INC 50-14



MILLER MILLERMATIC 350P



SPROCKET RACK  
W/SPROCKETS



ELECTIC MOTOR INVENTORY

## TERMS AND CONDITIONS

13% BUYERS PREMIUM ON ALL ITEMS

DUE TO INSURANCE AND SAFETY REASONS, CHILDREN UNDER 12 CANNOT BE ADMITTED

PAYMENT: FULL PAYMENT MUST BE MADE NO LATER THAN 5 PM, MONDAY, NOVEMBER 11TH. PAYMENT MUST BE MADE BY ONLINE CREDIT CARD, CASHIERS CHECK OR WIRE TRANSFER ONLY. AFTER THE AUCTION CLOSSES & YOU RECEIVE YOUR EMAILED INVOICE, PLEASE REPLY AND WE WILL CHARGE YOUR CARD ON FILE.

REMOVAL: SMALL ITEMS & ROLLING STOCK MUST BE REMOVED NO LATER THAN 4:00 PM, FRIDAY, NOVEMBER 15TH.

SAWMILL MUST BE REMOVED NO LATER THAN FRIDAY, FEBRUARY 28TH.

REMOVAL HOURS: 8:00 AM TO 4:00 PM, MONDAY THROUGH FRIDAY UNTIL FEBRUARY 28TH. NO WEEKEND OR HOLIDAY REMOVAL.

UPON AWARD OF BID DISMANTLERS TAKE RESPONSIBILITY FOR ANY ENVIRONMENT ISSUES THEY CREATE (E.G. SPILLED HYDRAULIC OIL).

DISMANTLERS ARE REQUIRED TO PROVIDE THEIR OWN MATERIALS TO CONTAIN & CLEAN UP ANY OIL SPILLAGE.

INSURANCE: ANYONE REMOVING EQUIPMENT THAT REQUIRES RIGGING, CUTTING, DISMANTLING OR ANY ALTERATIONS TO THE PROPERTY IS REQUIRED TO PROVIDE \$1,000,000.00 DOLLAR GENERAL LIABILITY INSURANCE CERTIFICATE SHOWING THE JAMES G. MURPHY COMPANY AND PYRAMID MOUNTAIN LUMBER AS THE ADDITIONAL INSURED PARTIES. INSURANCE CERTIFICATE AND PROOF OF WORKERS

COMPENSATION COMPLIANCE MUST BE ON FILE AT SALE SITE AND WITH THE JAMES G. MURPHY CO. BEFORE DISMANTLING COMMENCES. PURCHASED LOTS ARE AT THE BUYER'S RISK. IT IS THE RESPONSIBILITY OF THE BUYER TO PROVIDE ADEQUATE PROPERTY INSURANCE

COVERAGE FOR THE ITEMS PURCHASED AND BUYER'S OWN EQUIPMENT AT THE AUCTION SITE.

FIRE PROTECTION POLICY: NO CUTTING WITHOUT A PERMIT

•DISMANTLERS REQUIRED TO PROVIDE THEIR OWN FIRE HOSE & SPRAY NOZZLES.

•A SIGNED BURNING PERMIT ISSUED TO DISMANTLERS WILL BE DISPLAYED IN CUTTING AREA

•A LIMITED NUMBER OF BURNING PERMITS WILL BE ISSUED. ONE BURNING PERMIT PER HOSE WHILE CUTTING.

•EACH MAN USING A CUTTING TORCH WILL HAVE ONE FIREWATCH WITH A HOSE WHILE CUTTING

•FIREWATCH TO WET DOWN BEFORE, DURING AND AFTER CUTTING.

• FIREWATCH TO STAY IN AREA ONE HOUR AFTER CUTTING IS COMPLETED

•CUTTING HOURS ARE: 8:00 AM – 2:00 PM

WARRANTY DISCLAIMER: ALL SALES ARE FINAL. ALL ITEMS ARE BEING SOLD "AS IS, WHERE IS", WITH ALL FAULTS AND WITHOUT ANY WARRANTIES AS TO MERCHANTABILITY OF FITNESS FOR A PARTICULAR PURPOSE. THE PRINCIPAL, THE AUCTIONEER, THE ADVERTISING COORDINATOR, AND ANY OF THEIR AGENTS MAKE NO EXPRESS OR IMPLIED WARRANTIES OF ANY TYPE.

ADVERTISING DISCLAIMER: ALL INFORMATION WAS OBTAINED FROM SOURCES DEEMED RELIABLE. ALTHOUGH EVERY PRECAUTION HAS BEEN TAKEN TO ENSURE ACCURACY, THE PRINCIPAL, THE JAMES G. MURPHY CO., THE ADVERTISING COORDINATOR AND ALL THEIR AGENTS SHALL NOT BE RESPONSIBLE FOR ANY ERRORS OR OMISSIONS THEREIN. IT IS FOR THIS REASON THAT WE RECOMMEND THAT ALL ITEMS BE THOROUGHLY INSPECTED PRIOR TO THE POINT OF SALE.

ONLINE BIDS: FAILURE TO AWARD BID - ONLINE BIDDERS WILL NOT HAVE ANY CLAIM AGAINST THE JAMES G. MURPHY CO. FOR FAILURE TO SUBMIT BIDS TO THE AUCTIONEER OR ANY ERROR ON THE BIDDING PLATFORM. IN SOME INSTANCES, THE BIDDING PLATFORM MAY SHOW AN ITEM AWARDED TO AN ONLINE CUSTOMER; HOWEVER, WE RESERVE THE RIGHT TO WITHDRAW A BID AWARDED IN ERROR.

## Go To [Murphyauction.com](http://Murphyauction.com) For A Full List Of Items

# THREE DAY PUBLIC ONLINE AUCTION



1995 LETOURNEAU 4594



**James G. Murphy Co.**

Commercial & Industrial Auctioneers  
P.O. Box 1127, Marysville, WA 98270

PRESORTED  
FIRST CLASS MAIL  
U.S. POSTAGE  
PAID  
SEATTLE, WA  
PERMIT NO. 963

**425.486.1246**

***murphyauction.com***



# James G. Murphy Co.



## Commercial & Industrial Auctioneers

# THREE DAY PUBLIC ONLINE AUCTION

# PYRAMID MOUNTAIN LUMBER

*Sawmill, Planer Mill & Rolling Stock*

Start Dates: 10:00 AM MST | Oct. 30, 31 & Nov. 1

End Dates: 10:00 AM MST | Nov. 6, 7 & 8

Preview: 8:00 AM to 4:00 PM MST | Nov. 4 & 5

Location: 379 Boy Scout Road, Seeley Lake, MT 59868

***FULL PREVIEW AT MURPHYAUCTION.COM***

**1.800.426.3008 - 425.486.1246 - murphyauction.com**