

PUBLIC ONLINE AUCTION

2309 S. TACOMA WAY, TACOMA, WA 98409



RIPLEY

15 BBL 2-VESSEL BREWHOUSE



James G. Murphy Co.

Commercial & Industrial Auctioneers
P.O. Box 1127, Marysville, WA 98270

PRESORTED
FIRST CLASS MAIL
U.S. POSTAGE
PAID
SEATTLE, WA
PERMIT NO. 963

REGISTER TO BID @
MURPHYAUCTION.COM





PUBLIC ONLINE AUCTION

ODIN BREWING

Brewery Equipment

Start Date: 10:00 AM | Thursday - September 21

End Date: 10:00 AM | Thursday - September 28

Preview: 8:00 AM to 4:00 PM | Wednesday, September 27

Location: 2309 S. Tacoma Way, Tacoma, WA 98409

More Info At Murphyauction.com



**CASK BREWING SYSTEMS
AUTOMATED CANNING LINE**



APPROX. (260) 1/2 BBL KEGS



**30 BBL S/S JACKETED
VERTICAL HLT**



MEHEEN



MITSUBISHI FGC25N-LP

NO MINIMUMS - NO RESERVES

1.800.426.3008 - 425.486.1246 - MURPHYAUCTION.COM

PUBLIC ONLINE AUCTION - Brewing Equipment

2309 S. Tacoma Way, Tacoma, WA 98409

BREWHOUSE:

1998 RIPLEY 15 BARREL, 2-VESSEL BREWHOUSE, POWERFLAME DIRECT FIRE BURNER, AGC080-F HEAT EXCHANGER, KETTLE & MASH TRANSFER PUMPS, CATWALK, CONTROL PANELS, S/N: 0151

CANNING LINE:

CASK BREWING SYSTEMS AUTOMATED CANNING LINE, DEPALLETIZER, SHAKE TABLE, TWIST RINSE, 5-HEAD FILLER, SEAMER, LABELETTE INLINE LABELER, PAKTECK CCA120 CAN CARRIER APPLICATOR, ACCUTEK 48" ACCUMULATOR, SET UP FOR 12 OZ OR 16 OZ

VERTICAL HLT:

30 BARREL S/S JACKETED VERTICAL HLT, TRANSFER PUMP

FERMENTATION TANKS:

FALCO 30 BARREL S/S JACKETED FERMENTATION TANK, TRANSFER PUMP

AAA METAL FAB 30 BARREL S/S JACKETED FERMENTATION TANK

PACIFIC BREWERY SYSTEMS 30 BARREL S/S JACKETED FERMENTATION TANK, S/N: 50217

30 BARREL S/S JACKETED FERMENTATION TANK

2007 INTERIOR STAINLESS 30 BARREL S/S JACKETED FERMENTATION TANK

(2) 1998 RIPLEY 30 BARREL S/S JACKETED FERMENTATION TANKS,

S/N'S: 0151-1 & 0151-2

NSI 15 BARREL S/S JACKETED FERMENTATION TANK

LIQUID APPROX. 20 BARREL S/S JACKETED FERMENTATION TANK

BRITE TANKS:

1996 FALCO 30 BARREL S/S JACKETED BRITE TANK, S/N: 4032

PACIFIC BREWERY SYSTEMS 30 BARREL S/S JACKETED SQUAT BRITE TANK, S/N: 41182

FILLERS & SEALER:

MEHEEN 6-HEAD BOTTLE FILLER, CAP UNSCRAMBLER, TOUCH SCREEN CONTROLS, SET UP FOR 22 OZ

RNR GT7B12Q 10-HEAD ROTARY FILLER

IDD SQUIRE PLUS 2 SINGLE HEAD KEG WASH/FILLER

RNR GT4B2A AUTO VACUUM CAN SEALER

ROLLING STOCK:

MITSUBISHI FGC25N-LP 4,750 LB CAP. SOLID TIRED FORKLIFT, 187" 3-STAGE MAST, SIDE SHIFT, PROPANE, S/N: AF82F11095, HRS: 3,325
PRESTO PS286-50 2,000 LB CAP. WALK BEHIND ELECTRIC STACKER, S/N: 60313

MISC. BREWING EQUIPMENT:

LAARS MIGHTY THERM2 NATURAL GAS WATER HEATER, S/N: C19298271
ROBIX-Q 180/180 2 HP GRAIN MILL W/CHORE-TIME FLEX AUGER & TRANSFER

2010 PALL SUPRADISC WSFZ164 16"X4" FILTER SYSTEM W/PUMP & KB VSD GLYCOL CONTROLS 15 TANK CONTROL PANEL

2012 PRO REFRIGERATION PM110F3R4250-A-VC SKID MOUNTED GLYCOL CHILLER, R404A, CONTROLS, S/N: 827660512

2022 CAMPBELL HAUSFELD XC802100A5 5 HP, 80 GALLON VERTICAL TANK AIR COMPRESSOR W/(2) BACK UP COMPRESSORS

WALK-IN COOLER W/HUSSMANN COMPRESSOR, 4-FAN EVAPORATOR, DOOR, APPROX. 1,000 SQ FT (DISASSEMBLED)

(2) 40' REFRIGERATED CONTAINERS

APPROX. (250) 1/6 BARREL KEGS

APPROX. (260) 1/2 BARREL KEGS

1.5 HP PORTABLE TRANSFER PUMP

CIP TANK, TRANSFER HOSES, S/S SINKS, (2) PALLET JACKS,

(9) BARREL RACKS, FORKLIFT MAN BASKET, 48"X48" STEEL HOPPER,

TRANSFER HOSES, S/S TABLE, SHELVING, 2-DOOR DISPLAY COOLER,

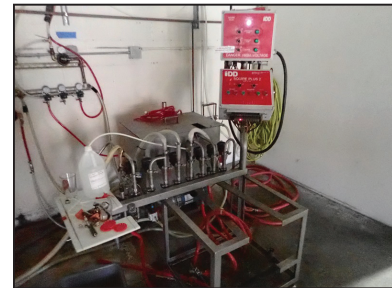
SINGLE DOOR COOLER, FREEZER & 2-DOOR REFRIGERATED PREP TABLE,

VESTIL DUMP HOPPER, (4) MACRO BIN 29 POLY BINS, FANS, TOOLBOX,

SHOP VAC, PARTS & MUCH MORE!



LAARS MIGHTY THERM2



IDD SQUIRE PLUS 2



ROBIX-Q



2012 PRO REFRIGERATION
PM110F3R4250-A-VC



2010 PALL SUPRADISC WSFZ164



(2) 40' REFRIGERATED
CONTAINERS

TERMS & CONDITIONS

13% BUYERS PREMIUM ON ALL PURCHASES

PAYMENT: FULL PAYMENT MUST BE MADE BY

5:00 PM THURSDAY, SEPTEMBER 28TH.

REMOVAL: ITEMS MUST BE REMOVED NO LATER THAN

4:00 PM, THURSDAY, OCTOBER 5TH

REMOVAL HOURS: 8:00 AM - 4:00 PM SEPT. 29TH THRU OCT. 5TH

NO SHIPPING & NO WEEKEND REMOVAL.

WARRANTY DISCLAIMER: ALL SALES ARE FINAL. ALL ITEMS ARE BEING SOLD "AS IS, WHERE IS," WITH ALL FAULTS AND WITHOUT ANY WARRANTIES AS TO MERCHANTABILITY. COMPLETE TERMS AND CONDITIONS OF SALE WILL BE AVAILABLE AT THE TIME OF SALE.

PLEASE SEE AUCTION CATALOG FOR COMPLETE TERMS AND CONDITIONS



PACIFIC BREWERY SYSTEMS



AAA METAL FAB

MURPHYAUCTION.COM FOR ADDITIONAL INFORMATION