



A MODERN MACHINERY COMPANY

**JR Hayes Corporation
22430 SE 231 Street
Maple Valley, WA 98038**

**June 25, 2014
Attn: Tony Perrotti**

MODERN MACHINERY:

(1) NEW SPOMAC 42" x 18 YD SKID MOUNTED HOPPER/FEEDER includes:

BASIC SPECIFICATIONS:

- 18 cu. yd. hopper complete with:
- 1/4" steel plate construction and self-relieving skirted sides
- Approx. 14' x 8' top opening
- Heavy Duty hopper support legs & I-beam skid members with towing and lifting eyes
- Manually adjustable discharge radial gate (1/2 clam)
- Conveyor Channel frame Approx. 42" wide x 18' long
- Belt Speed Approx. 100 FPM
- Capacity Approx. 1000 TPH of 100 PCF material
- Head Pulley 18" grooved rubber lagged, Dodge S2000 bearings, 3 15/16 Shaft
- Tail Pulley 16" self-cleaning winged, Dodge SCM bearings, 2 15/16 Shaft
- Take-up Dodge TP 12" travel screw type
- Idlers 6" live shaft on close spacing loaded side and as required on return side of belt
- Belt - 3 ply, 375 PIW with 1/4" top x 1/16" bottom covers; vulcanized splice
- 40 HP TEFC constant speed electric motor; 3/60/460 LESS starter and wiring
- Size 8 shaft mount gear reducer
- Twin rattle chains, bridle suspended, grizzly actuated to assist material flow
(must include grizzly option to base price for chains)
- Primer and paint

PRICE AS ABOVE FOB: MODERN MACHINERY SPOKANE, WA.....\$74,830.00

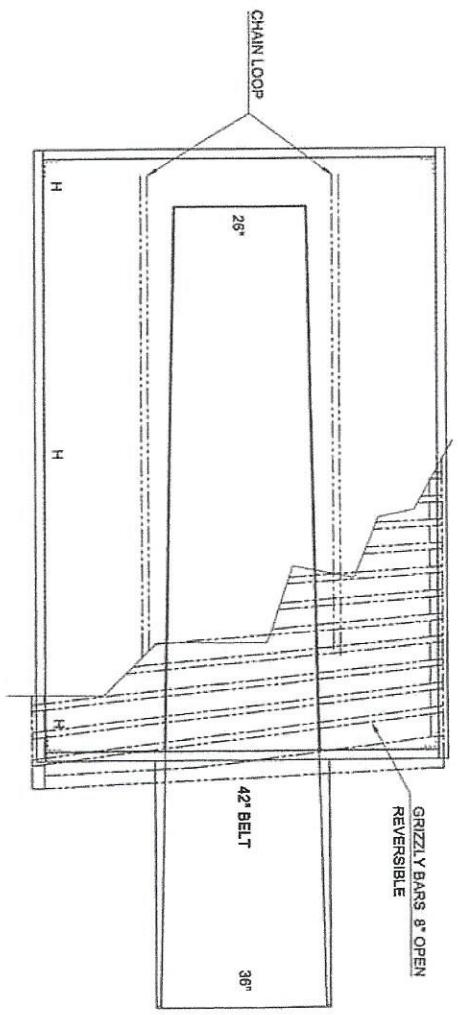
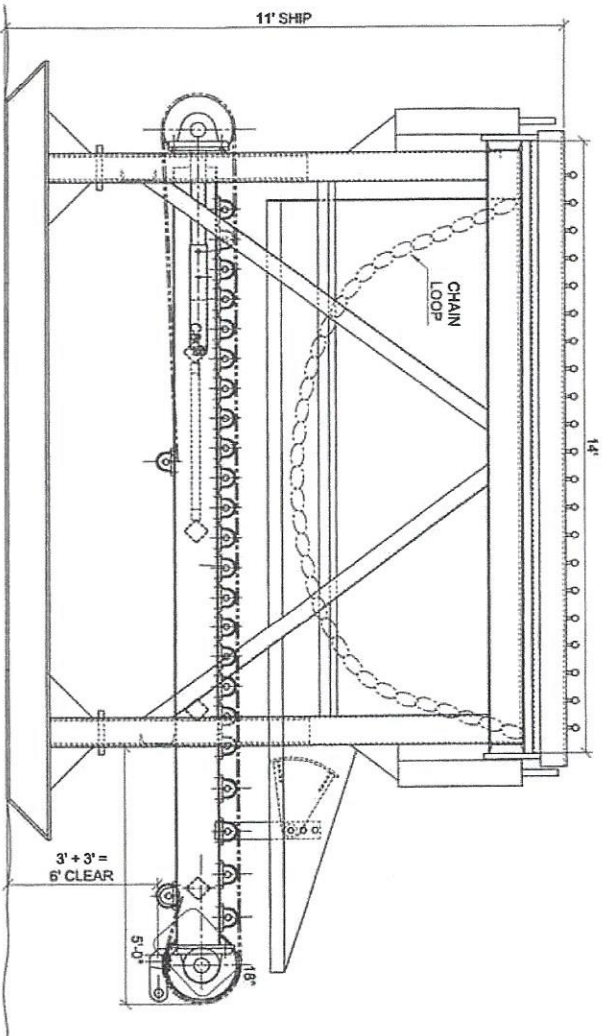
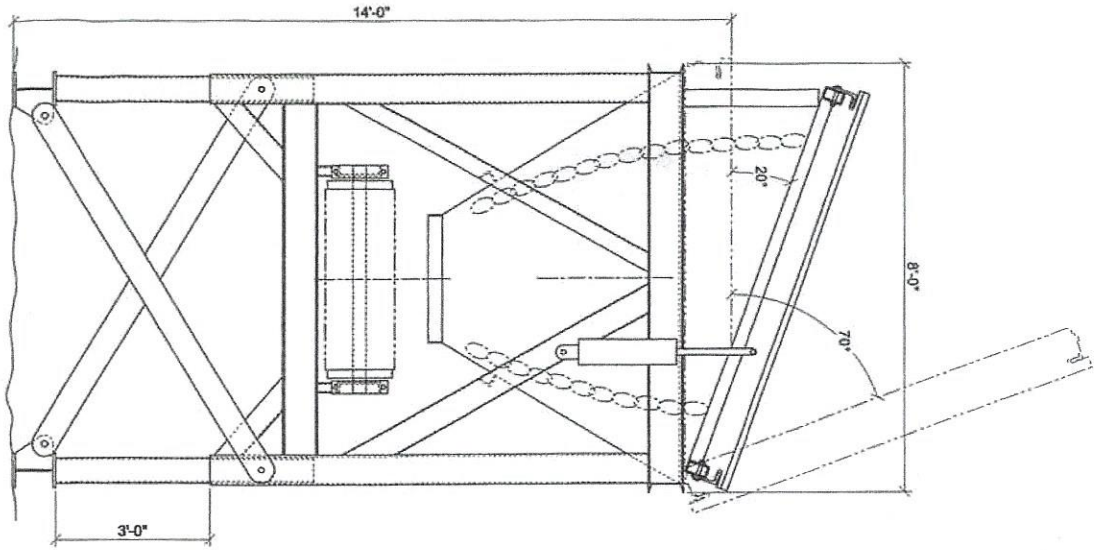
AVAILABLE OPTIONS PRICE ADD TO BASE PRICE:

- Belt Cleaner – Arch Gordon with tensioner\$1,110
- UHMW Liners – 3/8" liner two sides 5' high\$4,970
- Grizzly – hydraulic dump, approx. 20-degree slope, 12 to 10" nominal opening
Includes 15 HP electric/hydraulic power pack.....\$22,700
- Extendable legs approx 3'\$ 5,850
- Sliding conveyor frame for ease of belt changes.....\$ 9,400


We appreciate to opportunity to quote

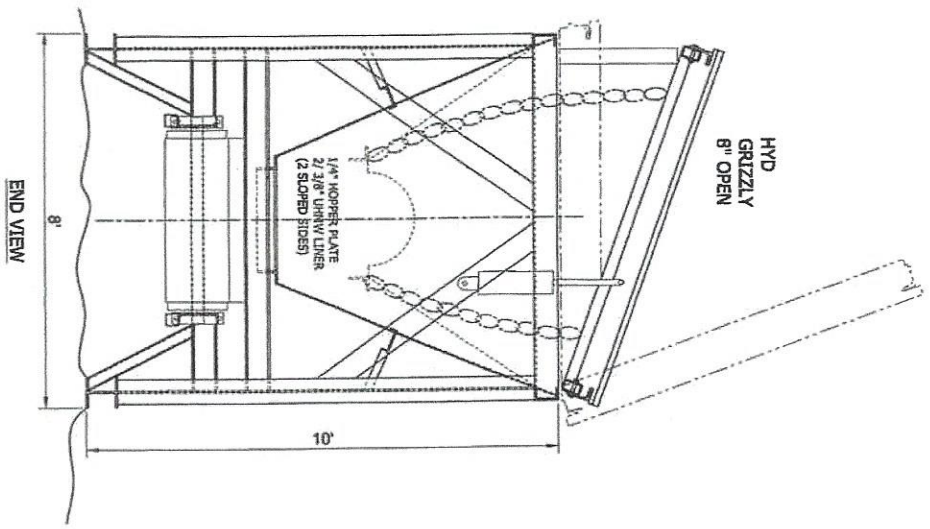
**Best Regards,
Sam Braithwaite**

GUARDING REQUIRED (NOT SHOWN)



DESIGNED FOR GRAVEL
1000 TPH, 90 FPM, 40 HP

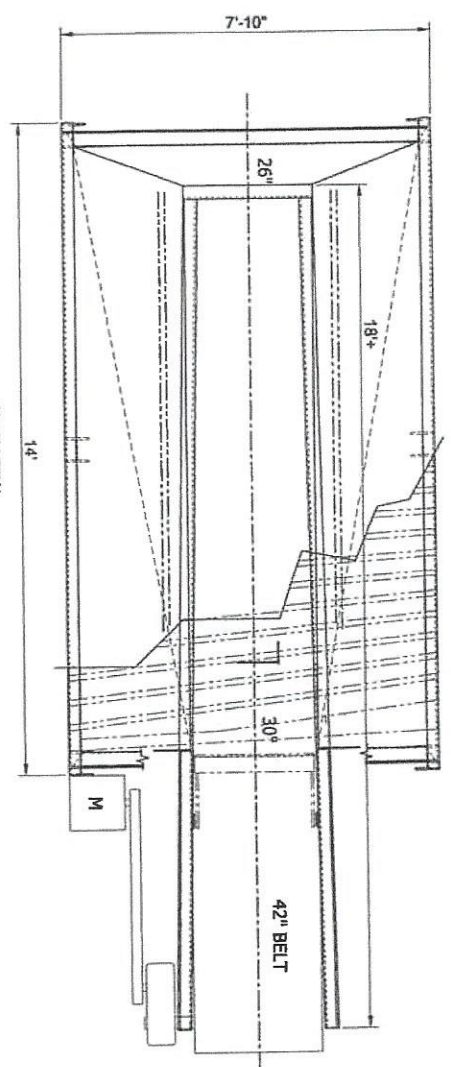
SCALE	DATE	PRJ. NAME	PRJ. NO.	REV.
DRAWN BY: VTS/SHD	18-JUN-14	J. R. HAYES	4064	
CHECKED BY:		TITLE:	SHI. NO.	
APPROVED BY:		17 C. Y. HOPPER FLAT 42" FEEDER	P1	
 A MODERN MACHINERY CO.				



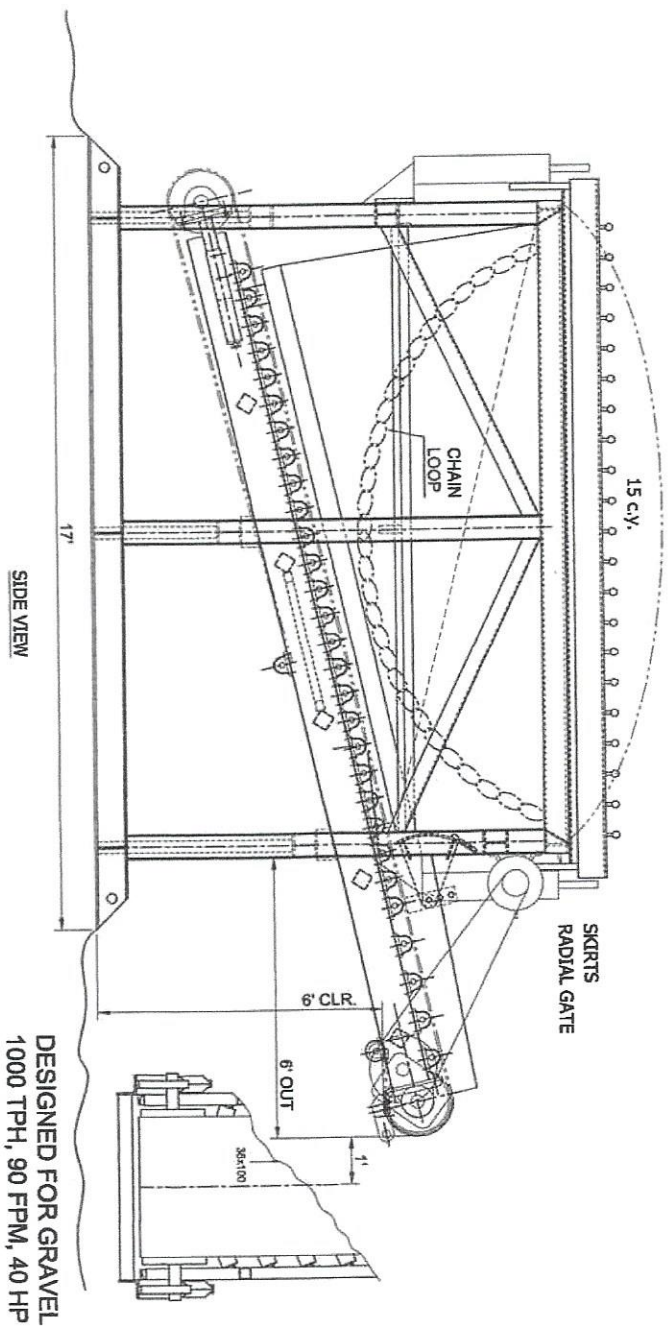
HYD
GRIZZLY
8" OPEN

1/4" HOPPER PLATE
2 3/8" UHMW LINER
(2 SLOPED SIDES)

END VIEW



PLAN VIEW



SIDE VIEW

DESIGNED FOR GRAVEL
1000 TPH, 90 FPM, 40 HP

GUARDING REQUIRED (NOT SHOWN)

SCALE:	DATE:
DRAWN BY: WTR/HAD	18-JUN-14
CHECKED BY:	
APPROVED BY:	

SPOMAC
A MODERN MACHINERY CO.

PRJ. NAME: J. R. HAYES
TITLE: 15 YD HOPPER
GA

PRJ. NO. 4064	REV.
SHT. NO. P2	