

# AUCTION CATALOG

## IDAHO FOREST GROUP ST. REGIS DAY 3

### LOTS 2001 - 2650

162 OLD MILL LOOP RD – ST REGIS, MT 59866

START DATE: 10 AM (MDT) – THURSDAY, OCTOBER 12<sup>TH</sup>

END DATE: 10 AM (MDT) – THURSDAY, OCTOBER 19<sup>TH</sup>

PREVIEW DATE: 8:00 AM – 4:00 PM (MDT) – WEDNESDAY, OCTOBER 18<sup>TH</sup>, 2023

**\*\*THERE IS A FORKLIFT AVAILABLE FOR REMOVAL\*\***

#### TERMS AND CONDITIONS

13% BUYERS PREMIUM ON ALL ITEMS

**PAYMENT: FULL PAYMENT MUST BE MADE BY NO LATER THAN 5 PM, FRIDAY, OCTOBER 20<sup>TH</sup>. PAYMENT MUST BE MADE BY CASHIERS CHECK, WIRE TRANSFERS OR ONLINE CREDIT CARD ONLY. CHECKS ARE ACCEPTED ONLY WITH BANK LETTER OF GUARANTEE.**

**REMOVAL: ALL SMALLS MUST BE REMOVED BY 4 PM, MONDAY, NOV 6<sup>TH</sup> AND ALL OTHER ITEMS MUST BE REMOVED BY NO LATER THAN 4 PM FRIDAY, JANUARY 26<sup>TH</sup>. REMOVAL HOURS: 8:00 AM – 4:00 PM, MONDAY THROUGH FRIDAY AND THE FOLLOWING SATURDAYS: OCT 21<sup>ST</sup>, OCT 28<sup>TH</sup>, NOV 4<sup>TH</sup>, NOV 11<sup>TH</sup> & NOV 18<sup>TH</sup>. NO WEEKEND OR HOLIDAY REMOVAL, WE WILL BE CLOSED THURSDAY & FRIDAY, NOVEMBER 23<sup>RD</sup> & 24<sup>TH</sup>, FRIDAY, DEC 22<sup>ND</sup>, MONDAY, DEC 25<sup>TH</sup> AND MONDAY, JANUARY 1<sup>ST</sup>.**

**UPON AWARD OF BID DISMANTLERS TAKE RESPONSIBILITY FOR ANY ENVIRONMENTAL ISSUES THEY CREATE (E.G. SPILLED HYDRAULIC OIL). DISMANTLERS ARE REQUIRED TO PROVIDE THEIR OWN MATERIALS TO CONTAIN & CLEAN UP ANY OIL SPILLAGE.**

**INSURANCE: ANYONE REMOVING EQUIPMENT THAT REQUIRES RIGGING, CUTTING AND DISMANTLING PROPERTY IS REQUIRED TO PROVIDE \$1,000,000.00 DOLLAR GENERAL LIABILITY INSURANCE CERTIFICATE SHOWING THE JAMES G. MURPHY CO. & IDAHO FOREST GROUP AS THE ADDITIONAL INSURED PARTIES. INSURANCE CERTIFICATE AND PROOF OF WORKERS COMPENSATION COMPLIANCE MUST BE ON FILE AT SALE SITE AND WITH THE JAMES G. MURPHY CO. BEFORE DISMANTLING COMMENCES.**

**PURCHASED LOTS ARE AT THE BUYER'S RISK. IT IS THE RESPONSIBILITY OF THE BUYER TO PROVIDE ADEQUATE PROPERTY INSURANCE COVERAGE FOR THE ITEMS PURCHASED AND BUYER'S OWN EQUIPMENT AT THE AUCTION SITE.**

#### FIRE PROTECTION POLICY: NO CUTTING WITHOUT A PERMIT

- DISMANTLERS REQUIRED TO PROVIDE THEIR OWN FIRE HOSE & SPRAY NOZZLES.
- A SIGNED BURNING PERMIT ISSUED TO DISMANTLERS WILL BE DISPLAYED IN CUTTING AREA
- A LIMITED NUMBER OF BURNING PERMITS WILL BE ISSUED. ONE BURNING PERMIT PER HOSE WHILE CUTTING.
- EACH MAN USING A CUTTING TORCH WILL HAVE ONE FIREWATCH WITH A HOSE WHILE CUTTING
- FIREWATCH TO WET DOWN BEFORE, DURING AND AFTER CUTTING.
- FIREWATCH TO STAY IN AREA ONE HOUR AFTER CUTTING IS COMPLETED
- CUTTING HOURS ARE FROM 8 AM TO 3:00 PM

**WARRANTY DISCLAIMER: ALL SALES ARE FINAL. ALL ITEMS ARE BEING SOLD "AS IS, WHERE IS," WITH ALL FAULTS AND WITHOUT ANY WARRANTIES AS TO MERCHANTABILITY OF FITNESS FOR A PARTICULAR PURPOSE. THE PRINCIPAL, THE AUCTIONEER, THE ADVERTISING COORDINATOR, AND ANY OF THEIR AGENTS MAKES NO EXPRESS OR IMPLIED WARRANTIES OF ANY TYPE. COMPLETE TERMS AND CONDITIONS OF SALE WILL BE AVAILABLE AT THE TIME OF SALE. ALL INFORMATION WAS OBTAINED FROM SOURCES DEEMED RELIABLE. ALTHOUGH EVERY PRECAUTION HAS BEEN TAKEN TO ENSURE ACCURACY, THE PRINCIPAL, THE JAMES G. MURPHY CO., THE ADVERTISING COORDINATOR, AND ALL OF THEIR AGENTS SHALL NOT BE RESPONSIBLE FOR ANY ERRORS OR OMISSIONS THEREIN. IT IS FOR THIS REASON THAT WE RECOMMEND THAT ALL ITEMS BE THOROUGHLY INSPECTED PRIOR TO THE POINT OF SALE.**

JAMES G. MURPHY CO.

PO BOX 1127 – MARYSVILLE, WA 98270

1-800-426-3008

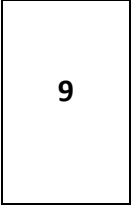
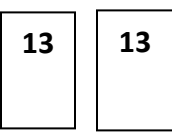
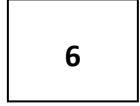
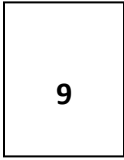
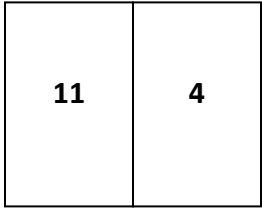
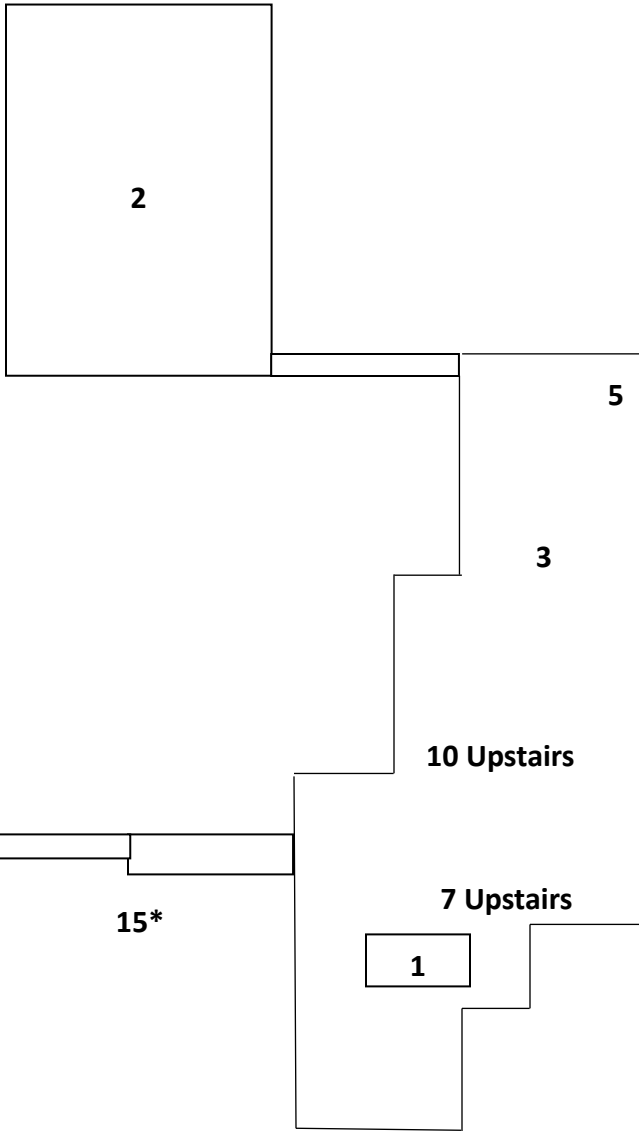
OREGON OFFICE: 5605 INLAND SHORES WAY N., SUITE 102 - KEIZER, OREGON 97303

(503) 463-4444

MURPHYAUCTION.COM

**IDAHO FOREST GROUP – ST. REGIS  
SITE MAP**

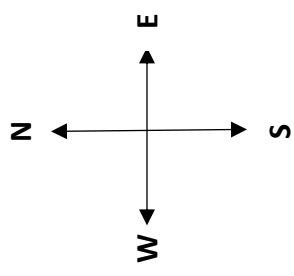
1. Office
  2. Log Deck Area: Lots 1-85
  3. Sawmill/Planer Mill: Lots 86-250; Bull Pen: Lots 251-325
  4. Shop #1: Lots 326-425
  5. Machine Shop: Lots 426-525
  6. Warehouse: Lots 526-630
  7. Planer Mill/Sawmill: Lots 1001-1140, 1210-1230, 2451-2577
  8. Boiler: Lots 1141-1170
  9. Kilns: Lots 1171-1209
  10. Grinding Room: Lots 1231-1400
  11. Shop: Lots 1401-1600
  12. Rolling Stock A-C: A Lots 2000-2035, B Lots 2036-2075, C Lots 2076-2100  
    Note: Lots 2101-2122 are located off-site
  13. Motors: Lots 2201-2250
  14. Boneyards A-C: A Lots 2578-2596, B Lots 2597-2624, C Lots 2625-2650
  15. Bathrooms
- \* No Smoking on mill property



14C →

14B →

12A



12B

14A

Entrance to  
162 Old Mill Loop



**James G. Murphy Co.**  
PO BOX 1127  
Marysville, WA 98270  
Toll Free - 1.800.426.3008  
[murphyauction.com](http://murphyauction.com)

**IDAHO FOREST GROUP ST. REGIS - DAY 3 - ONLINE AUCTION 10/12/2023-10/19/2023**

**LOT #**

---

**2001 2013 DOOSAN D225L**

HEEL BOOM LOG LOADER W/SWIVEL GRAPPLE,  
DOOSAN DIESEL, 27-1/2" DOUBLE GROUSER  
TRACKS, CAB & CYLINDER GUARDS, NEW, (2)  
PLANETARY DRIVES, SPROCKETS, LOWER ROLLER  
SETS & (1) TRACK, HOUR METER READS: APPROX  
23,843  
SERIAL NUMBER: DHKCEBAFPC0005043

---

**2002 2004 CATERPILLAR 322C**

HEEL BOOM LOG LOADER W/SWIVEL GRAPPLE,  
CAT 3126 DIESEL, 32" TRIPLE GROUSER TRACKS,  
CAB & CYLINDER GUARDS, HOUR METER READS:  
APPROX 44,405  
SERIAL NUMBER: CAT0322CKCB400204

---

**2003 2004 CATERPILLAR 320C**

HEEL BOOM LOG LOADER W/SWIVEL GRAPPLE,  
CAT 3066 DIESEL, 28" DOUBLE GROUSER TRACKS,  
HOUR METER READS: APPROX 49,091 (RUNS HOT,  
LOW ON POWER)  
SERIAL NUMBER: CAT0320CCSA401016

---

**2004 2015 KOMATSU WA500-7**

RUBBER TIRE LOG LOADER, MEDFORD FORKS,  
KOMATSU TURBO DIESEL, 29.5-25 TIRES, HOUR  
METER READS: APPROX 17,427 (IFG DISCLAIMER:  
BAD DPF, EXCESSIVE ENGINE BLOW-BY)  
SERIAL NUMBER: KMTWA119H29010236

---

**2005 2014 KOMATSU WA500-7**

RUBBER TIRE LOG LOADER, MEDFORD FORKS,  
KOMATSU TURBO DIESEL, 29.5-25 TIRES, HOUR  
METER READS: APPROX 24,656 (IFG DISCLAIMER:  
BAD DPF, EXCESSIVE ENGINE BLOW-BY)  
SERIAL NUMBER: KMTWA119E29010237

---

**LOT #**

---

**2006 2009 KOMATSU WA-450-6**

RUBBER TIRE WHEEL LOADER, 4.2 CU YD BUCKET,  
KOMATSU TURBO DIESEL, 29.5-25 TIRES, HOUR  
METER READS: APPROX 26,044 (IFG DISCLAIMER:  
HYDRAULIC PUMPS & TRANSMISSION NEEDS  
WORK, DRIVEN INTO PLACE)  
SERIAL NUMBER: KMTWA098K57A44256

---

**2007 CATERPILLAR 988B**

RUBBER TIRE LOG LOADER, MEDFORD FORKS, CAT  
3408 DIESEL, 36/65-33 TIRES, HOUR METER READS:  
APPROX 16,673 (NOT RUNNING, LOCATED BY SHOP  
BUILDINGS)  
SERIAL NUMBER: 50WJ751

---

**2008 CATERPILLAR 966C**

WHEEL LOADER, 10' CHIP BUCKET, CAT C9.3B  
DIESEL, 23.5-25 TIRES, HOUR METER READS: N/A  
SERIAL NUMBER: 76J6902

---

**2009 1994 TAYLOR TLS900**

RUBBER TIRE LOG STACKER, 45-TON CAP, 2-WHEEL  
DRIVE, CUMMINS NTA 335 TURBO DIESEL, 33.25-35  
& 18.00-25 TIRES, HOUR METER READS: APPROX  
5,043 (IFG DISCLAIMER: BAD TORQUE CONVERTER)  
SERIAL NUMBER: 22065

---

**2010 2016 GENIE GTH-1056**

10,000 LB CAP 4X4 TELEHANDLER, 56' HEIGHT, 42'  
REACH, PERKINS 1104D, 4-CYL DIESEL, 48" QC FORK  
FRAME, FRONT HYDRAULIC OUTRIGGERS, 3RD  
VALVE, ENCLOSED CAB, A/C, HOUR METER READS:  
4,734 (#128)  
SERIAL NUMBER: GTH1016E-11398

---

**2011 2021 HYSTER H230XD**

21,400 LB CAP DUAL PNEUMATIC FORKLIFT, TIER 4,  
CUMMINS QSB 4.5L DIESEL, 217" 2-STAGE MAST,

---

**\*\*13% BUYERS PREMIUM ON ALL ITEMS\*\***

## IDAHO FOREST GROUP ST. REGIS - DAY 3 - ONLINE AUCTION 10/12/2023-10/19/2023

**LOT #**

FINGERTIP CONTROLS, MONOTROL, 8' FORKS, SIDE SHIFT, FORK POSITIONERS, BACKUP CAMERA, ENCLOSED CAB, GLASS 100%, HOUR METER READS: 1,251 (#120)  
SERIAL NUMBER: P007E01622V

**2012 2013 HYSTER H280XL2**

17,450 LB CAP DUAL PNEUMATIC FORKLIFT, PERKINS 6-CYL DIESEL, MONOTROL, 213" 2-STAGE MAST, 8' FORKS, SIDE SHIFT, FORK POSITIONERS, ENCLOSED CAB, GLASS 100%, HOUR METER READS: 694 (#122)  
SERIAL NUMBER: E007D044954

**2013 2013 HYSTER H280XL2**

17,450 LB CAP DUAL PNEUMATIC FORKLIFT, PERKINS 6-CYL DIESEL, MONOTROL, 213" 2-STAGE MAST, 8' FORKS, SIDE SHIFT, FORK POSITIONERS, ENCLOSED CAB, GLASS 100%, HOUR METER READS: 2,812 (#121)  
SERIAL NUMBER: D007D01665L

**2014 2004 HYSTER H360HD**

35,500 LB CAP DUAL PNEUMATIC FORKLIFT, PERKINS 6-CYL DIESEL, MONOTROL, 216" 2-STAGE MAST, 8' FORKS, SIDE SHIFT, JOYSTICK CONTROLS, ENCLOSED CAB, GLASS 100%, HOUR METER READS: 35,552 (#123A)  
SERIAL NUMBER: F019E01597B

**2015 1994 HYSTER H165XL**

16,000 LB CAP PNEUMATIC FORKLIFT, PERKINS DIESEL, MONOTROL, 183" 2-STAGE MAST, 4' FORKS, SIDE SHIFT, ENCLOSED CAB, GLASS 100%, HOUR METER READS: 2,726 (#123B)  
SERIAL NUMBER: E007RD02123

**2016 2014 HYSTER H100XM**

10,000 LB CAP DUAL PNEUMATIC FORKLIFT, PERKINS DIESEL, 163" 3-STAGE MAST, 4' FORKS, SIDE SHIFT, ENCLOSED CAB, GLASS 100%, HOUR METER READS: 14,480 (#124)  
SERIAL NUMBER: K005D

**LOT #****2017 2004 TAYLOR TDH160**

15,000 LB CAP DUAL PNEUMATIC FORKLIFT, CUMMINS DIESEL, 180" 2-STAGE MAST, 4' FORKS, SIDE SHIFT, ENCLOSED CAB, GLASS 100%, HOUR METER READS: 17,360 (#127)  
SERIAL NUMBER: S-C8-31297

**2018 2008 HYSTER H80XL**

8,100 LB CAP PNEUMATIC FORKLIFT, PERKINS DIESEL, MONOTROL, 145" 2-STAGE MAST, 4' FORKS, SIDE SHIFT, HOUR METER READS: 2,964 (#125)  
SERIAL NUMBER: G005008245T

**2019 2003 TAYLOR TC180S**

18,000 LB CAP DUAL PNEUMATIC FORKLIFT, CUMMINS DIESEL, 216" 2-STAGE MAST, 4' FORKS, SIDE SHIFT, HOUR METER READS: 19,111 (MOTOR NEEDS WORK, HYDRAULIC PUMP IS BAD)  
SERIAL NUMBER: 31128

**2021 2011 CASE SR150**

SKID STEER LOADER W/5' BUCKET, ISM M844T/M3 DIESEL, HOUR METER READS: N/A (IFG DISCLAIMER: ECM NEEDS TO BE PROGRAMMED)  
SERIAL NUMBER: NBM42670

**2022 1998 BOBCAT 553**

SKID STEER LOADER W/5' BUCKET, KUBOTA D950 DIESEL, HOUR METER READS: 932 (IFG DISCLAIMER: ENGINE RUNS, PUMPS ARE OUT, NO BRAKES)  
SERIAL NUMBER: 516311142

**2023 1993 BROCE RC300**

BROOM, 8' BROOM, DIESEL DRIVE, HOUR METER READS: 4,399  
SERIAL NUMBER: 87013

**2024 2014 GENIE GS-3246**

E-DRIVE SCISSOR LIFT, HOUR METER READS: 300  
SERIAL NUMBER: GS4614A-117417

## IDAHO FOREST GROUP ST. REGIS - DAY 3 - ONLINE AUCTION 10/12/2023-10/19/2023

LOT #	LOT #
<b>2025 2015 GENIE S-80X</b>	<b>2032 2004 DODGE 2500</b>
BOOM LIFT, 500 LB CAP, 80' REACH, DEUTZ DIESEL, HOUR METER READS: 2,720 SERIAL NUMBER: S80X15-12190	4X4 CREW CAB PICKUP, CUMMINS DIESEL, AUTO (WHITE W/GRAY HOOD) HOUR METER READS: 387,615 SERIAL NUMBER: 3D7KU28C14G253519
<b>2026 GROVE RT620S</b>	<b>2034 1997 CHEVROLET CHEYENNE 3500</b>
20-TON ROUGH TERRAIN CRANE, 4-SECTION BOOM, 85' REACH, FRONT & REAR HYDRAULIC OUTRIGGERS, 20.5X25 TIRES, ENCLOSED CAB, PAT, HOUR METER READS: 5,102 SERIAL NUMBER: 30037	FLATBED, V8 DIESEL, 5-SPD MANUAL, CHAMPION TRASH PUMP, (2) 1,000 GALLON POLY TANKS HOUR METER READS: 100,923 SERIAL NUMBER: 1GBKC34F5VJ110225
<b>2027 1978 FORD 7000</b>	<b>2035 1991 GMC 2500</b>
SINGLE AXLE SERVICE TRUCK, V8 DIESEL, 5/2, IOWA MOLD HYDRAULIC CRANE, LINCOLN K14281 350 AMP PORTABLE WELDING UNIT W/GAS DRIVE, HOUR METER READS: 1,591, (2) REELS OF WELDING LEADS, AIR COMPRESSOR W/VERTICAL TANK, HOSE REEL & HOSE, GAS HOSE REEL, HOUR METER READS: 2,509 HOUR METER READS: 33,628 SERIAL NUMBER: R71BVCE5896	4X4 EXTENDED CAB PICKUP, V8, AUTO HOUR METER READS: 113,307 SERIAL NUMBER: 2GTGK29N5M1516805
<b>2029 2004 DODGE RAM 3500</b>	<b>2035Z SALE MOVES TO NE YARD BEHIND CHIP TENTS</b>
4X4 FLATBED, CUMMINS DIESEL, 6-SPD MANUAL, MEYER SV2-9.5V2, V-SNOW PLOW UNIT, CAB CONTROLS, SALT SPREADER, DIESEL & GAS SLIP TANKS W/PUMPS, BOXES, CROSSBED TOOLBOX (IFG DISCLAIMER: CLUTCH & FUEL PUMP NEED WORK) HOUR METER READS: 321,843 SERIAL NUMBER: 3D7MU46C44G260987	<b>2036 D-200-HD</b>
	DUMP HOPPER FORKLIFT ATTACHMENT
<b>2030 2006 FORD F150</b>	<b>2037 D-200-HD</b>
4X4 EXTENDED CAB PICKUP, 5.4L, AUTO (WHITE) HOUR METER READS: 255,160 SERIAL NUMBER: 1FTVX14546NB33644	DUMP HOPPER FORKLIFT ATTACHMENT
<b>2031 2004 FORD F250</b>	<b>2038 D-100-HD</b>
8' FLATBED, EXTENDED CAB, V10, AUTO (GRAY) HOUR METER READS: 295,057 SERIAL NUMBER: 1FTNX21S14EA77031	DUMP HOPPER FORKLIFT ATTACHMENT
	<b>2039 WRIGHT</b>
	DUMP HOPPER FORKLIFT ATTACHMENT
	<b>2040 WRIGHT</b>
	DUMP HOPPER FORKLIFT ATTACHMENT
	<b>2041 2003 PJ</b>
	TANDEM AXLE TILT DECK EQUIPMENT TRAILER, 6'X20' DECK, SPARE TIRE SERIAL NUMBER: 4P5CH02731052975

## IDAHO FOREST GROUP ST. REGIS - DAY 3 - ONLINE AUCTION 10/12/2023-10/19/2023

LOT #	LOT #
2048 SKID STEER HYDRAULIC GRAPPLE BUCKET	2064 TOYO
-----	18.00-25 TIRE
2049 2009 BOBCAT	-----
72" HYDRAULIC BROOM W/SPARE BROOM PIECES	2065 LOT, (2) 20.5-25 TIRES
-----	-----
2050 10' TRASH BIN	2066 LOT, (6) 11R22.5 MOUNTED TIRES
-----	-----
2051 HYDRAULIC SWIVEL GRAPPLE	2067 LOT, (4) THUNDER 11R22.5 RECON MOUNTED TIRES
-----	-----
2052 HYDRAULIC SWIVEL GRAPPLE	2068 DOUBLE COIN
-----	10.00-R20 RECON MOUNTED TIRE
2053 8' HYDRAULIC BROOM SKID STEER ATTACHMENT	-----
-----	2069 LOT, (2) 12.00-20 MOUNTED TIRES
2054 FLIP SCREEN WL180	-----
HYDRAULIC LOADER ATTACHMENT	2070 LOT, (2) MAGNUM SOLIDEAL 300.15 FORKLIFT TIRE (UNUSED)
-----	-----
2055 MEDFORD	2071 LOT, (4) MAXAM MS701+ 8.25-15 SOLIDMATIC FORKLIFT TIRES
LOG FORKS	-----
-----	2072 LOT, (8) ASSORTED MOUNTED TRUCK TIRES W/RACK
2056 LOT, TAYLOR MAST PARTS IN THIS SECTION	-----
-----	2073 LOT, ASSORTED 6"X6" TIMBERS
2057 CATERPILLAR 980C	-----
HYDRAULIC CHIP BUCKET	2075Z SALE MOVES TO ROLLING STOCK BONEYARD
-----	-----
2058 DRUM GRAB FORKLIFT ATTACHMENT	2076 CATERPILLAR 966F
-----	ARTICULATED WHEEL LOADER, GP BUCKET, ENCLOSED CAB, CAB GUARD, 26.5R25 TIRES, HOUR METER READS: N/A (DOES NOT RUN) SERIAL NUMBER: 1SL02577
2059 LOT, (2) 29.5R25 TIRES	-----
-----	2077 HYSTER 190
2060 LOT, (2) 29.5R25 MOUNTED TIRES	DUAL PNEUMATIC FORKLIFT, PERKINS DIESEL, MONOTROL, 2-STAGE MAST, 4' FORKS, SIDE SHIFT, ENCLOSED CAB, 11R22.5 TIRES, HOUR METER READS: 6,710 (DOES NOT RUN) SERIAL NUMBER: 376221
-----	-----
2061 BRIDGESTONE	-----
35/65R33 TIRE	-----
-----	-----
2062 FIRESTONE	-----
33.25-35 TIRE	-----
-----	-----
2063 TITAN	-----
26.5R25 TIRE	-----
-----	-----

## IDAHO FOREST GROUP ST. REGIS - DAY 3 - ONLINE AUCTION 10/12/2023-10/19/2023

LOT #	LOT #
<b>2078 TAYLOR T180S</b>	SERIAL NUMBER: 1FTSX21535EC72689
16,000 LB CAP DUAL PNEUMATIC FORKLIFT, 6-CYL DIESEL, 218" 2-STAGE MAST, 84" FORKS, SIDE SHIFT, FORK POSITIONERS, ENCLOSED CAB, 11R22.5 TIRES, HOUR METER READS: 27,084 (DOES NOT RUN) SERIAL NUMBER: SBB-31575	<b>2101 1971 CAT 14E</b>
	GRADER W/CAT 3306 DIESEL ENGINE, 14' MOLD BOARD, 14.00-24 TIRES W/SPARE TIRE & RIM, MAINTENANCE RECORDS AVAILABLE UPON REQUEST (LOCATED IN MOYIE SPRINGS, IDAHO, APPOINTMENT REQUIRED TO PREVIEW & PICKUP, PLEASE CONTACT LES LOVE AT 208-946-0008) SERIAL NUMBER: 12K1745
<b>2079 TAYLOR GT210</b>	<b>2102 1987 FORD L9000</b>
21,000 LB CAP DUAL PNEUMATIC FORKLIFT, PERKINS DIESEL, 2-STAGE MAST, SIDE SHIFT, ENCLOSED CAB, 8' FORKS, HOUR METER READS: 8,329 (DOES NOT RUN) SERIAL NUMBER: SZ5-23460	TANDEM AXLE DUMP TRUCK, CUMMINS DIESEL ENGINE, EATON TRANSMISSION, CHELSEA PTO (LOCATED IN MOYIE SPRINGS, IDAHO, APPOINTMENT REQUIRED FOR PREVIEW & PICKUP, PLEASE CONTACT LES LOVE AT 208-946-0008) HOUR METER READS: 229,835 SERIAL NUMBER: 1FDXR90L9HVA45578
<b>2080 TAYLOR GT-170</b>	<b>2103 1975 KENWORTH W900</b>
15,000 LB CAP DUAL PNEUMATIC FORKLIFT, 6-CYL DIESEL, 180" 2-STAGE MAST, 4' FORKS, SIDE SHIFT, FORK POSITIONERS, ENCLOSED CAB, HOUR METER READS: 4,583 (DOES NOT RUN) SERIAL NUMBER: SZ5-22599	TANDEM AXLE WATER TRUCK, CUMMINS NTC 350 DIESEL ENGINE, FULLER ROADRANGER 13-SPD TRANSMISSION, PTO, APPROX 4,000-GALLON WATER TANK, FRONT & BACK SPRAY BARS (LOCATED IN LACLEDE, IDAHO, APPOINTMENT REQUIRED FOR PREVIEW & PICKUP, PLEASE CONTACT JIM BAMBINO AT 208-946-7414) HOUR METER READS: 56,111 SERIAL NUMBER: 147132S
<b>2081 TOYOTA 7FDU35</b>	<b>2104 2001 HYSTER H280XL</b>
7,000 LB CAP SOLIDMATIC FORKLIFT, 187" 3-STAGE MAST, SIDE SHIFT, HOUR METER READS: N/A (DOES NOT RUN) SERIAL NUMBER: 71977	26,500 LB CAP FORKLIFT, PERKINS DIESEL ENGINE, 213" 2-STAGE MAST, FORK PLACERS, SIDE SHIFT, 48" FORKS, DUAL PNEUMATIC TIRES, HOUR METER READS: APPROX 4,319 (LOCATED IN ATHOL, IDAHO, APPOINTMENT REQUIRED FOR PREVIEW & PICKUP, PLEASE CONTACT CASEY NESBITT AT 208-699-8410) SERIAL NUMBER: E007D4486Y
<b>2082 1987 ALLOY</b>	<b>2105 2001 HYSTER H280XL</b>
48' TRI-AXLE 20.65-UNITS CHIP TRAILER SERIAL NUMBER: 1ALSC0389JS880007	26,500 LB CAP FORKLIFT, PERKINS DIESEL ENGINE, 213" 2-STAGE MAST, FORK PLACERS, SIDE SHIFT, 48" FORKS, DUAL PNEUMATIC TIRES, HOUR METER READS: APPROX 34,327 (LOCATED IN ATHOL, IDAHO, APPOINTMENT REQUIRED FOR PREVIEW &
<b>2083 1986 WESTERN</b>	
40' TANDEM AXLE FLATBED TRAILER SERIAL NUMBER: 1C923C400G0112197	
<b>2084 1986 WESTERN</b>	
20' B-TRAIN SERIAL NUMBER: 1C913N200G0112176	
<b>2086 2005 FORD F250</b>	
4X4 PICKUP (DOES NOT RUN) HOUR METER READS: N/A	



## IDAHO FOREST GROUP ST. REGIS - DAY 3 - ONLINE AUCTION 10/12/2023-10/19/2023

**LOT #**

PICKUP, PLEASE CONTACT CASEY NESBITT AT  
208-699-8410)  
SERIAL NUMBER: E007D4485Y

**2106 2000 HYSTER H250XL**

22,600 LB CAP FORKLIFT, PERKINS DIESEL ENGINE,  
183" 2-STAGE MAST, FORK PLACERS, SIDE SHIFT, 48"  
FORKS, DUAL PNEUMATIC TIRES, HOUR METER  
READS: APPROX 37,836 (LOCATED IN ATHOL,  
IDAHO, APPOINTMENT REQUIRED FOR PREVIEW &  
PICKUP, PLEASE CONTACT CASEY NESBITT AT  
208-699-8410)  
SERIAL NUMBER: E007D1794R

**2107 2000 HYSTER H210XL**

17,950 LB CAP FORKLIFT, PERKINS DIESEL ENGINE,  
183" 2-STAGE MAST, FORK PLACERS, SIDE SHIFT, 48"  
FORKS, DUAL PNEUMATIC TIRES, HOUR METER  
READS: N/A (LOCATED IN ATHOL, IDAHO,  
APPOINTMENT REQUIRED FOR PREVIEW & PICKUP,  
PLEASE CONTACT CASEY NESBITT AT 208-699-8410)  
SERIAL NUMBER: E007D4380X

**2108 1997 HYSTER H210XL**

21,100 LB CAP FORKLIFT, PERKINS DIESEL ENGINE,  
213" 2-STAGE MAST, FORK PLACERS, SIDE SHIFT, 48"  
FORKS, DUAL PNEUMATIC TIRES, HOUR METER  
READS: APPROX 43,539 (LOCATED IN ATHOL,  
IDAHO, APPOINTMENT REQUIRED FOR PREVIEW &  
PICKUP, PLEASE CONTACT CASEY NESBITT AT  
208-699-8410)  
SERIAL NUMBER: E007D3039U

**2109 2001 HYSTER H210XL**

21,100 LB CAP FORKLIFT, PERKINS DIESEL ENGINE,  
213" 2-STAGE MAST, FORK PLACERS, SIDE SHIFT, 48"  
FORKS, DUAL PNEUMATIC TIRES, HOUR METER  
READS: APPROX 45,965 (LOCATED IN ATHOL,  
IDAHO, APPOINTMENT REQUIRED FOR PREVIEW &  
PICKUP, PLEASE CONTACT CASEY NESBITT AT  
208-699-8410)  
SERIAL NUMBER: E007D04573Y

**2110 1998 HYSTER H155XL**

**A**  
15,500 LB CAP FORKLIFT, PERKINS DIESEL ENGINE,  
173" 2-STAGE MAST, SIDE SHIFT, 48" FORKS, DUAL

**LOT #**

PNEUMATIC TIRES, HOUR METER READS: N/A  
(LOCATED IN ATHOL, IDAHO, APPOINTMENT  
REQUIRED FOR PREVIEW & PICKUP, PLEASE  
CONTACT CASEY NESBITT AT 208-699-8410)  
SERIAL NUMBER: E006D04859V

**2110B 1993 HYSTER H210XL**

22,700 LB CAP FORKLIFT, PERKINS DIESEL ENGINE,  
212-1/2" 2-STAGE MAST W/FORK PLACERS, SIDE  
SHIFT, 48" FORKS, DUAL PNEUMATIC TIRES, HOUR  
METER READS: APPROX 4,558 (LOCATED IN ATHOL,  
IDAHO, APPOINTMENT REQUIRED FOR PREVIEW &  
PICKUP, PLEASE CONTACT CASEY NESBITT AT  
208-699-8410)  
SERIAL NUMBER: E007D1631P

**2110 1997 HYSTER H190XL****C**

20,000 LB CAP FORKLIFT, PERKINS DIESEL ENGINE,  
212-1/2" 2-STAGE MAST, SIDE SHIFT, 48" FORKS,  
DUAL PNEUMATIC TIRES, HOUR METER READS:  
APPROX 3,364 (LOCATED IN ATHOL, IDAHO,  
APPOINTMENT REQUIRED FOR PREVIEW & PICKUP,  
PLEASE CONTACT CASEY NESBITT AT 208-699-8410)  
SERIAL NUMBER: E007D03234U

**2111 1997 GROVE MZ116D**

BOOM LIFT, 45' REACH, 700 LB CAP, DIESEL ENGINE,  
HOUR METER READS: APPROX 8,106 (LOCATED IN  
CHILCO, IDAHO, APPOINTMENT REQUIRED FOR  
PREVIEW & PICKUP, PLEASE CONTACT RAY THOM  
AT 208-610-4821)  
SERIAL NUMBER: 43028

**2112 1990 BOBCAT 753**

SKID STEER W/BUCKET, HOUR METER READS:  
APPROX 7,949 (LOCATED IN CHILCO, IDAHO,  
APPOINTMENT REQUIRED FOR PREVIEW & PICKUP,  
PLEASE CONTACT RAY THOM AT 208-610-4821)  
SERIAL NUMBER: 501949574

**2113 1989 LETOURNEAU 2594SS**

4-WHEEL LOG STACKER, 40-TON CAP, CUMMINS N14  
475 HP DIESEL ENGINE, LOG FORKS, 30-33 TIRES,  
HOUR METER READS: N/A (LOCATED IN  
GRANGEVILLE, IDAHO, APPOINTMENT REQUIRED  
FOR PREVIEW & PICKUP, PLEASE CONTACT FRED

## IDAHO FOREST GROUP ST. REGIS - DAY 3 - ONLINE AUCTION 10/12/2023-10/19/2023

LOT #	LOT #
SMITH AT 208-553-1330) SERIAL NUMBER: 1062	PLEASE CONTACT FRED SMITH AT 208-553-1330)
<b>2114 2015 HYSTER H360HD</b>	<b>2119 1998 HYSTER 360XL</b>
APPROX 34,000 LB CAP FORKLIFT, DIESEL ENGINE, 212-1/2" 2-STAGE MAST W/FORK PLACERS, SIDE SHIFT, DUAL PNEUMATIC TIRES, HOUR METER READS: APPROX 32,300 (LOCATED IN GRANGEVILLE, IDAHO, APPOINTMENT REQUIRED FOR PREVIEW & PICKUP, PLEASE CONTACT FRED SMITH AT 208-553-1330) SERIAL NUMBER: A238E01629N	APPROX 3,400 LB CAP FORKLIFT, DIESEL ENGINE, 212-1/2" 2-STAGE MAST, FORK PLACERS, SIDE SHIFT, DUAL PNEUMATIC TIRES, HOUR METER READS: APPROX 7,757 (LOCATED IN LEWISTON, IDAHO, APPOINTMENT REQUIRED FOR PREVIEW & PICKUP, PLEASE CONTACT AUSTIN BRITTON AT 208-553-8614) SERIAL NUMBER: D019D02678V
<b>2115 2013 HYSTER H360HD</b>	<b>2120 1977 FORD LT8000</b>
APPROX 34,000 LB CAP FORKLIFT, DIESEL ENGINE, 212-1/2" 2-STAGE MAST W/FORK PLACERS, SIDE SHIFT, DUAL PNEUMATIC TIRES, HOUR METER READS: APPROX 24,754 (LOCATED IN GRANGEVILLE, IDAHO, APPOINTMENT REQUIRED FOR PREVIEW & PICKUP, PLEASE CONTACT FRED SMITH AT 208-553-1330) SERIAL NUMBER: A238E01512M	TANDEM AXLE BOOM TRUCK W/FORD V636 8-CYL DIESEL ENGINE, MANUAL TRANSMISSION, NATIONAL 8,000 LB CAP TRUCK CRANE, STEEL BED (LOCATED IN LEWISTON, IDAHO, APPOINTMENT REQUIRED FOR PREVIEW & PICKUP, PLEASE CONTACT AUSTIN BRITTON AT 208-553-8614) HOUR METER READS: APPROX 39,710 SERIAL NUMBER: U80DVY90949
<b>2116 2005 YALE GPD210</b>	<b>2121 1983 CHEVROLET C70</b>
APPROX 16,400 LB CAP FORKLIFT, DIESEL ENGINE, 183" 2-STAGE MAST W/SIDE SHIFT, DUAL PNEUMATIC TIRES, HOUR METER READS: APPROX 38,325 (LOCATED IN GRANGEVILLE, IDAHO, APPOINTMENT REQUIRED FOR PREVIEW & PICKUP, PLEASE CONTACT FRED SMITH AT 208-553-1330) SERIAL NUMBER: C876E01617C	DUAL WHEEL SERVICE TRUCK W/V8 GAS ENGINE, MANUAL TRANSMISSION, 8,000 LB CAP AUTO CRANE, SERVICE BODY (LOCATED IN LEWISTON, IDAHO, APPOINTMENT REQUIRED FOR PREVIEW & PICKUP, PLEASE CONTACT AUSTIN BRITTON AT 208-553-8614) HOUR METER READS: 58,880 SERIAL NUMBER: 1GBG7D1B8DV134138
<b>2117 1999 HYSTER H165XL</b>	<b>2122 2014 KOMATSU PC390LL-10</b>
APPROX 16,000 LB CAP FORKLIFT, DIESEL ENGINE, 183" 2-STAGE MAST, SIDE SHIFT, DUAL PNEUMATIC TIRES, HOUR METER READS: APPROX 37,000 (LOCATED IN GRANGEVILLE, IDAHO, APPOINTMENT REQUIRED FOR PREVIEW & PICKUP, PLEASE CONTACT FRED SMITH AT 208-553-1330) SERIAL NUMBER: E007D03912W	EXCAVATOR LOG LOADER, HEEL BOOM W/SWIVEL GRAPPLE, KOMATSU DIESEL ENGINE, HOUR METER READS: APPROX 19,850 (LOCATED IN LEWISTON, IDAHO, APPOINTMENT REQUIRED FOR PREVIEW & PICKUP, PLEASE CONTACT AUSTIN BRITTON AT 208-553-8614) SERIAL NUMBER: A50611
<b>2118 LOT, 2002 METRIGUARD 7200 HCLT (NOT INSTALLED),</b>	<b>2201 TECO</b>
900-2,000 FPM & METRIGUARD 312 BENDING PROOF LOADER (LOCATED IN GRANGEVILLE, IDAHO, APPOINTMENT REQUIRED FOR PREVIEW & PICKUP,	300 HP/1,788 RPM AC MOTOR

## IDAHO FOREST GROUP ST. REGIS - DAY 3 - ONLINE AUCTION 10/12/2023-10/19/2023

<u>LOT #</u>	<u>LOT #</u>
<b>2202 TOSHIBA</b> 250 HP/1,785 RPM/5449T FRAME AC MOTOR	<b>2213 BALDOR</b> A 60 HP/1,780 RPM/364T FRAME AC MOTOR
<b>2203 TOSHIBA</b> 250 HP/1,785 RPM/444T FRAME AC MOTOR	<b>2213BBALDOR</b> 60 HP/1,780 RPM/364TS FRAME AC MOTOR
<b>2204 WEG</b> 175 HP/1,790 RPM/3158 FRAME AC MOTOR	<b>2214 TECO</b> 60 HP/1,775 RPM/365T FRAME AC MOTOR
<b>2205 BALDOR</b> 150 HP AC MOTOR	<b>2215 MARATHON</b> 60 HP/1,775 RPM/364T FRAME AC MOTOR
<b>2206 BALDOR</b> 150 HP AC MOTOR	<b>2216 TOSHIBA</b> 50 HP/1,775 RPM/328T FRAME AC MOTOR
<b>2207 GE</b> 150 HP/1,770 RPM/B444TP20 FRAME AC PUMP MOTOR	<b>2217 TECO</b> 50 HP/1,775 RPM/328T FRAME AC MOTOR
<b>2208 TECO</b> 75 HP/885 RPM/444T FRAME AC MOTOR	<b>2218 TOSHIBA</b> 50 HP/1,765 RPM/254TS FRAME AC MOTOR
<b>2209 BALDOR</b> A 75 HP/1,185 RPM/364T FRAME AC MOTOR	<b>2220 BALDOR</b> 50 HP/1,775 RPM/326T FRAME AC MOTOR
<b>2209BBALDOR/RELIANCE</b> 75 HP/3,555 RPM/364T FRAME AC MOTOR	<b>2221 TECO</b> 50 HP/900 RPM/404TC FRAME AC MOTOR
<b>2210 TOSHIBA</b> 75 HP/1,785 RPM/365T FRAME AC MOTOR	<b>2222 WEG</b> 50 HP/1,785 RPM/404-5TS FRAME AC MOTOR
<b>2211 TOSHIBA</b> 75 HP/1,785 RPM/365T FRAME AC MOTOR	<b>2223 TOSHIBA</b> 40 HP/1,755 RPM/324TC FRAME AC MOTOR
<b>2212 TOSHIBA</b> 60 HP/1,760 RPM/364T FRAME AC MOTOR	<b>2224 BALDOR</b> 40 HP/1,755 RPM/324T FRAME AC MOTOR

## IDAHO FOREST GROUP ST. REGIS - DAY 3 - ONLINE AUCTION 10/12/2023-10/19/2023

LOT #	LOT #
<b>2225 TOSHIBA</b>	<b>2236 BALDOR</b>
30 HP/1,770 RPM/286T FRAME AC MOTOR	<b>A</b> 15 HP/880 RPM/286T FRAME AC MOTOR
<b>2226 BALDOR</b>	<b>2236B BALDOR</b>
30 HP/1,760 RPM/286T FRAME AC MOTOR	15 HP/880 RPM/286T FRAME AC MOTOR
<b>2227 TOSHIBA</b>	<b>2236 BALDOR</b>
25 HP/1,760 RPM/284TC FRAME AC MOTOR	<b>C</b> 15 HP/880 RPM/286T FRAME AC MOTOR
<b>2228 TECO</b>	<b>2237 BALDOR</b>
25 HP/1,760 RPM/284TC FRAME AC MOTOR	<b>A</b> 15 HP/880 RPM/286T FRAME AC MOTOR
<b>2229 TOSHIBA</b>	<b>2237B BALDOR</b>
20 HP/1,770 RPM/258T FRAME AC MOTOR	15 HP/880 RPM/286T FRAME AC MOTOR
<b>2230 TOSHIBA</b>	<b>2238 NORD</b>
<b>A</b> 20 HP/1,770 RPM/256T FRAME AC MOTOR	<b>A</b> 15 HP/1,770 RPM/254T FRAME AC MOTOR
<b>2230B TOSHIBA</b>	<b>2238B TOSHIBA</b>
15 HP/1,770 RPM/286T FRAME AC MOTOR	15 HP/1,770 RPM/254T FRAME AC MOTOR
<b>2231 TOSHIBA</b>	<b>2238 TOSHIBA</b>
15 HP/1,770 RPM/286T FRAME AC MOTOR	<b>C</b> 15 HP/1,770 RPM/254T FRAME AC MOTOR
<b>2232 WESTINGHOUSE</b>	<b>2239 BALDOR</b>
20 HP/1,760 RPM/256T FRAME AC MOTOR	15 HP/1,740 RPM/254T FRAME AC MOTOR
<b>2233 TATUNG</b>	<b>2240 TOSHIBA</b>
15 HP/880 RPM/256T FRAME AC MOTOR	10 HP/3,510 RPM/215T FRAME AC MOTOR
<b>2234 TATUNG</b>	<b>2241 TATUNG</b>
15 HP/880 RPM/256T FRAME AC MOTOR	10 HP/880 RPM/284T FRAME AC MOTOR
<b>2235 TATUNG</b>	<b>2242 TATUNG</b>
15 HP/880 RPM/256T FRAME AC MOTOR	10 HP/880 RPM/284T FRAME AC MOTOR

## IDAHO FOREST GROUP ST. REGIS - DAY 3 - ONLINE AUCTION 10/12/2023-10/19/2023

<u>LOT #</u>	<u>LOT #</u>
<b>2243 TATUNG</b> 10 HP/880 RPM/284T FRAME AC MOTOR	<b>2254 BALDOR</b> 7-1/2 HP/1,770 RPM/213T FRAME AC MOTOR
<b>2244 TOSHIBA</b> 10 HP/1,760 RPM/215TC FRAME AC MOTOR	<b>2255 BALDOR</b> 5 HP/1,775 RPM/184TC FRAME AC MOTOR
<b>2245 TOSHIBA</b> 10 HP/1,760 RPM/215TC FRAME AC MOTOR	<b>2256 BALDOR</b> 5 HP/1,775 RPM/184TC FRAME AC MOTOR
<b>2246 BALDOR</b> 10 HP/1,760 RPM/215TC FRAME AC MOTOR	<b>2261 BALDOR</b> 15 HP MOTOR TO REX VENUS 86 RPM REDUCER
<b>2247 BALDOR</b> 7-1/2 HP/3,555 RPM TRIMMER DUTY AC MOTOR	<b>2262 BALDOR</b> 15 HP MOTOR TO ATLAS 102 RPM REDUCER
<b>2248 BALDOR</b> 7-1/2 HP/3,450 RPM TRIMMER DUTY AC MOTOR	<b>2263 BALDOR</b> 15 HP MOTOR TO VENUS 40 RPM REDUCER
<b>2249 BALDOR</b> A 7-1/2 HP/3,450 RPM TRIMMER DUTY AC MOTOR	<b>2264 SEW</b> 7-1/2 HP/48 RPM GEARHEAD MOTOR
<b>2249BBALDOR</b> 7-1/2 HP/3,450 RPM TRIMMER DUTY AC MOTOR	<b>2265 SEW</b> 7-1/2 HP/48 RPM GEARHEAD MOTOR
<b>2250 BALDOR</b> 7-1/2 HP/3,450 RPM TRIMMER DUTY AC MOTOR	<b>2266 NORD</b> 5 HP/1,755 RPM GEARHEAD MOTOR
<b>2251 BALDOR</b> 7-1/2 HP/3,450 RPM TRIMMER DUTY AC MOTOR	<b>2267 NORD</b> 5 HP/1,755 RPM GEARHEAD MOTOR
<b>2252 TOSHIBA</b> 7-1/2 HP/1,760 RPM/213T FRAME AC MOTOR	<b>2268 NORD</b> 5 HP/1,755 RPM GEARHEAD MOTOR
<b>2253 TOSHIBA</b> 7-1/2 HP/1,760 RPM/213T FRAME AC MOTOR	<b>2269 BALDOR</b> 3 HP MOTOR TO REX MARS 126 RPM REDUCER

## IDAHO FOREST GROUP ST. REGIS - DAY 3 - ONLINE AUCTION 10/12/2023-10/19/2023

<b>LOT #</b>	<b>LOT #</b>
<b>2271 TATUNG</b>	<b>2290 REX VENUS</b>
25 HP MOTOR TO REX EARTH 16 RPM REDUCER	86 RPM REDUCER
<b>2272 RELIANCE</b>	<b>2291 REX VENUS</b>
7-1/2 HP MOTOR TO REX REDUCER (NO DATA)	102 RPM REDUCER
<b>2273 RELIANCE</b>	<b>2292 REX VENUS</b>
3 HP MOTOR TO REX MARS REDUCER (NO DATA)	REDUCER (NO DATA)
<b>2281 REX POLARIS</b>	<b>2293 REX MARS</b>
27 RPM REDUCER	48 RPM REDUCER
<b>2282 REX POLARIS</b>	<b>2294 REX MARS</b>
40 RPM REDUCER	48 RPM REDUCER
<b>2283 REX EARTH</b>	<b>2295 REX MARS</b>
27 RPM REDUCER	93 RPM REDUCER
<b>2284 REX EARTH</b>	<b>2296 REX MARS</b>
40 RPM REDUCER	80 RPM REDUCER
<b>2285 REX EARTH</b>	<b>2297 REX MARS</b>
40 RPM REDUCER	109 RPM REDUCER
<b>2286 REX EARTH</b>	<b>2298 REX MARS</b>
27 RPM REDUCER	126 RPM REDUCER
<b>2287 REX ATLAS</b>	<b>2299 REX MARS</b>
40 RPM REDUCER	159 RPM REDUCER
<b>2288 REX ATLAS</b>	<b>2300 REX MARS</b>
40 RPM REDUCER	159 RPM REDUCER
<b>2289 REX ATLAS</b>	<b>2301 REX MARS</b>
102 RPM REDUCER	188 RPM REDUCER

## IDAHO FOREST GROUP ST. REGIS - DAY 3 - ONLINE AUCTION 10/12/2023-10/19/2023

<b>LOT #</b>	<b>LOT #</b>
<b>2302 REX MARS</b> 286 RPM REDUCER	<b>2315 LOT, (2) PALLETS OF GEARHEAD MOTORS &amp; REDUCERS</b>
<b>2303 REX MARS</b> 286 RPM REDUCER	<b>2316 LOT, (2) PALLETS OF ASSORTED MOTORS</b>
<b>2304 REX MARS</b> 286 RPM REDUCER	<b>2321 LOT, ASSORTED PLANER PARTS TO INCLUDE SPARE TOP HEAD ASSEMBLY &amp; ASSORTED ROLLS (FITS LOT 1001)</b>
<b>2305 REX MARS</b> 288 RPM REDUCER	<b>2322 LOT, ASSORTED BOARD EDGER PARTS TO INCLUDE SPLINED ARBOR &amp; BEARINGS (FITS LOT 211)</b>
<b>2306 FALK QUADRIVE 5203</b> 26.942:1 RATIO REDUCER	<b>2323 LOT, ASSORTED CANTER LINE PARTS</b>
<b>2307 DODGE TXT525</b> 25.56:1 RATIO REDUCER	<b>2324 BM&amp;M</b> DRIVE REPAIR KIT (FITS LOT 1120)
<b>2308 DODGE TXT105</b> 5.62:1 RATIO REDUCER	<b>2325 LOT, SPARE BAGHOUSE FILTERS &amp; CAGES (FITS LOT 1210)</b>
<b>2309 TOSHIBA SMR4</b> 25:1 RATIO REDUCER	<b>2326 16"X16" CHIP FEEDER (UNKNOWN MANUFACTURER)</b>
<b>2310 SUMITOMO</b> 11:1 RATIO REDUCER	<b>2327 2018 KAWASAKI K3VL112</b> HYDRAULIC PUMP
<b>2311 NORD</b> REDUCER (NO DATA)	<b>2328 LOT, ASSORTED HYDRAULIC PUMPS/MOTORS</b>
<b>2312 LOT, (2) PALLETS OF ASSORTED MOTORS</b>	<b>2329 LOT, HYDRAULIC PUMP &amp; ASSORTED ITEMS ON THIS PALLET (BY TENT LOT 1135)</b>
<b>2313 LOT, (2) PALLETS OF ASSORTED MOTORS</b>	<b>2330 LOT, MCGILL CAMFOLLOWER LUBRI-DISCS</b>
<b>2314 LOT, (2) PALLETS OF ASSORTED MOTORS</b>	<b>2331 LOT, ASSORTED ITEMS ON THIS PALLET</b>
	<b>2332 LOT, ASSORTED PURAKAL FILTERS</b>

## IDAHO FOREST GROUP ST. REGIS - DAY 3 - ONLINE AUCTION 10/12/2023-10/19/2023

<b>LOT #</b>	<b>LOT #</b>
<b>2333 LOT, (3) CYLINDERS</b>	<b>2347 RELIANCE</b>
-----	75 HP/1,765 RPM AC MOTOR
<b>2334 LOT, BELT TENSIONERS &amp; ASSORTED ITEMS ON THIS PALLET</b>	-----
-----	<b>2348 LOT, WEG 60 HP/1,775 RPM MOTOR W/(2) TOSHIBA 10 HP AC MOTORS</b>
<b>2335 LOT, 81XH CHAIN</b>	-----
-----	<b>2349 TECO</b>
<b>2336 LOT, 81XH CHAIN</b>	75 HP/1,775 RPM AC MOTOR
-----	-----
<b>2337 LOT, H84 CHAIN</b>	<b>2350 SKK</b>
-----	10 HP/68 RPM GEARHEAD MOTOR
<b>2338 LOT, ASSORTED CHAIN &amp; PARTS</b>	-----
-----	<b>2351 RELIANCE</b>
<b>2339 LOT, ASSORTED BELTING</b>	15 HP MOTOR TO SM CYCLO 71:1 RATIO REDUCER
-----	-----
<b>2340 TOSHIBA</b>	<b>2352 TOSHIBA</b>
125 HP/1,180 RPM/445T FRAME AC MOTOR	7-1/2 HP MOTOR TO REX VENUS REDUCER (NO DATA)
-----	-----
<b>2341 TOSHIBA</b>	<b>2353 TECO</b>
100 HP/1,775 RPM/405T FRAME AC MOTOR	7-1/2 HP MOTOR TO REX REDUCER (NO DATA)
-----	-----
<b>2342 TOSHIBA</b>	<b>2354 5 HP MOTOR TO REX REDUCER (NO DATA)</b>
100 HP/1,760 RPM/405T FRAME AC MOTOR	-----
-----	<b>2355 TECO</b>
<b>2343 TOSHIBA</b>	3 HP MOTOR TO REX REDUCER (NO DATA)
100 HP/1,760 RPM/405T FRAME AC MOTOR	-----
-----	<b>2356 TOSHIBA</b>
<b>2344 TOSHIBA</b>	5 HP MOTOR TO REX MARS 55 RPM REDUCER
100 HP/1,760 RPM/405T FRAME AC MOTOR	-----
-----	<b>2357 REX VENUS</b>
<b>2345 TECO</b>	55 RPM REDUCER
100 HP/1,775 RPM AC MOTOR	-----
-----	<b>2358 REX VENUS</b>
<b>2346 TOSHIBA</b>	139 RPM REDUCER
75 HP/1,780 RPM/365T FRAME AC MOTOR	-----
-----	



## IDAHO FOREST GROUP ST. REGIS - DAY 3 - ONLINE AUCTION 10/12/2023-10/19/2023

<u>LOT #</u>	<u>LOT #</u>
2359 SM CYCLO 29:1 RATIO REDUCER	2379 6"X12" BOX CHAIN
2360 LOT, PALLET OF REX REDUCERS	2380 6"X12" BOX CHAIN
2361 LOT, PALLET OF REX REDUCERS	2381 6"X12" BOX CHAIN
2362 LOT, WR132XHD CHAIN	2382 LOT, ASSORTED CHAIN
2363 LOT, WR132XHD CHAIN	2383 LOT, ASSORTED CHAIN
2364 LOT, WR132XHD CHAIN	2384 LOT, 60" BELTING (UNUSED)
2365 LOT, WR132XHD CHAIN W/FLITES	2385 LOT, 36" BELTING (UNUSED)
2366 LOT, WR124 CHAIN W/FLITES	2386 LOT, 36" BELTING (UNUSED)
2367 LOT, WR124 CHAIN	2387 LOT, 36" BELTING (UNUSED)
2368 LOT, WR124 CHAIN	2388 LOT, 36" BELTING (UNUSED)
2369 LOT, WR124 CHAIN	2389 LOT, 30" BELTING (UNUSED)
2370 LOT, WR124 CHAIN	2390 LOT, 27" BELTING (UNUSED)
2371 LOT, WR124 CHAIN	2391 LOT, 24" BELTING (UNUSED)
2372 LOT, 81X CHAIN W/LUGS	2392 LOT, 24" BELTING (UNUSED)
2373 LOT, 81X CHAIN W/LUGS	2394 38" BELT DRUM
2374 8"X14" BOX CHAIN	2395 32" BELT DRUM A
2375 6"X12" BOX CHAIN	2395B 32" BELT DRUM
2376 6"X12" BOX CHAIN	2395 32" BELT DRUM C
2377 6"X12" BOX CHAIN	2396 24" BELT DRUM
2378 6"X12" BOX CHAIN	2397 24" BELT DRUM

## IDAHO FOREST GROUP ST. REGIS - DAY 3 - ONLINE AUCTION 10/12/2023-10/19/2023

<u>LOT #</u>	<u>LOT #</u>
2398 LOT, ASSORTED ROLLS	2413 LOT, WATER SOFTENER SALT
2399 LOT, 28" ROLLS	2414 FAN HOUSING
2400 LOT, (6) PPI 21-1/2" ROLLS	2415 A5
2401 LOT, (6) PPI 36" ROLLS A	27" FEED ROLL
2401BLOT, (6) SETS OF 36" TROUGHING BELT ROLLS	2425 SIMONDS
2402 LOT, ASSORTED UHMW	APPROX 60" INSERT TOOTH SAW
2403 LOT, ASSORTED UHMW	2426 SIMONDS
2404 ARCTIC SHELTER PIONEER SERIES 4036	APPROX 60" INSERT TOOTH SAW
STEEL DOUBLE TRUSS FRAME & PVC TENT, 40'X30'X16' PEAK X 10' 5" EAVES, DRIVE THROUGH, 11' 8"H X 17'W DOOR (ALL ITEMS IN CRATE, PLEASE INSPECT)	2427 SIMONDS
2405 ARCTIC SHELTER PRO SERIES	APPROX 60" INSERT TOOTH SAW
PVD DOUBLE TRUSS & FABRIC TENT, 40'X30'X22' PEAK X 12' 4" EAVES, 13' 1"H X 14' 1"W MECHANICAL WINCH DOOR	2428 LOT, (3) APPROX 60" INSERT TOOTH SAWS
2406 LOT, (6) ANSON 315 BEARINGS	2429 APPROX 60" INSERT TOOTH SAW
2407 LOT, ASSORTED VIBRATORY CONVEYOR PARTS	2430 APPROX 60" INSERT TOOTH SAW
2408 LOT, ASSORTED SPROCKETS	2431 APPROX 60" INSERT TOOTH SAW
2409 LOT, ASSORTED MACHINERY PARTS	2432 APPROX 60" INSERT TOOTH SAW
2410 LOT, PLASTIC RAMPS	2433 APPROX 54" INSERT TOOTH SAW
2411 LUBE TANK	2434 APPROX 54" INSERT TOOTH SAW
2412 LOT, ASSORTED PACKAGING MATERIALS W/UNUSED 18 GAUGE STAPLER	2435 APPROX 48" INSERT TOOTH SAW
	2436 APPROX 48" INSERT TOOTH SAW
	2437 APPROX 48" INSERT TOOTH SAW
	2438 APPROX 48" INSERT TOOTH SAW
	2439 APPROX 48" INSERT TOOTH SAW

## IDAHO FOREST GROUP ST. REGIS - DAY 3 - ONLINE AUCTION 10/12/2023-10/19/2023

<b>LOT #</b>	<b>LOT #</b>
<b>2440 MODINE HSB34SB01SA</b>	<b>2458 LOT, 30' OF TIMKEN DRIVES DRV-100-1R CHAIN</b>
HYDRAULIC UNIT HEATER W/1/2 HP MOTOR (UNUSED)	
<b>2441 MODINE HSB34SB01SA</b>	<b>2459 LOT, 30' OF TIMKEN DRIVES DRV-100-1R CHAIN</b>
HYDRAULIC UNIT HEATER W/1/2 HP MOTOR (UNUSED)	
<b>2442 MODINE HSB34SB01SA</b>	<b>2460 LOT, 50' OF TIMKEN DRIVES DRV-100-1R CHAIN</b>
HYDRAULIC UNIT HEATER W/1/2 HP MOTOR (UNUSED)	
<b>2443 DAYTON 1WDC4</b>	<b>2461 LOT, 50' OF TIMKEN DRIVES DRV-100-1R CHAIN</b>
48" BELT DRIVE EXHAUST FAN	
<b>2450ZSALE MOVES TO SAWMILL OFFICE AREA</b>	<b>2462 LOT, 50' OF TIMKEN DRIVES DRV-100-1R CHAIN</b>
<b>2451 LOT, 10' OF TIMKEN DRIVES DRV-140-2R CHAIN</b>	<b>2463 LOT, 20' OF ATLAS ANSI 80-3 SPEP CHAIN</b>
<b>2452 LOT, 10' OF TIMKEN DRIVES DRV-140-2R CHAIN</b>	<b>2464 LOT, 40' OF ATLAS 100-1 SPEP CHAIN</b>
<b>2453 LOT, 10' OF TIMKEN DRIVES DRV-140-2R CHAIN</b>	<b>2465 LOT, 30' OF ATLAS 100-1 SPEP CHAIN</b>
<b>2454 LOT, 10' OF TIMKEN DRIVES DRV-120-1R CHAIN</b>	<b>2466 LOT, 20' OF SUMMIT 100-1SL-LP &amp; 10' OF W-160-1 CHAIN</b>
<b>2455 LOT, 10' OF TIMKEN DRIVES 80 4C010 CHAIN</b>	<b>2467 LOT, (11) BOXES OF ASSORTED CHAIN</b>
<b>2456 LOT, 50' OF DRV-80-1R, 50' OF C2080H-1R &amp; 30' OF H78 CHAIN</b>	<b>2468 LOT, (5) BOXES OF ASSORTED CHAIN</b>
<b>2457 LOT, 50' OF ASSORTED CHAIN A</b>	<b>2469 LOT, (6) BOXES OF ASSORTED CHAIN</b>
<b>2457BLOT, 30' OF TIMKEN DRIVES DRV-100-1R CHAIN</b>	<b>2470 LOT, (10) BOXES OF ASSORTED CHAIN</b>
	<b>2471 LOT, ASSORTED CHAIN W/STEEL BENCH</b>
	<b>2472 LOT, ASSORTED CHAIN W/STEEL BENCH</b>
	<b>2473 LOT, ROLLER CHAIN ON REEL</b>
	<b>2474 LOT, MARKED SHELF, (2) STEEL TABLES &amp; (1) PLASTIC TABLE (MUST WAIT UNTIL EMPTY TO REMOVE)</b>

## IDAHO FOREST GROUP ST. REGIS - DAY 3 - ONLINE AUCTION 10/12/2023-10/19/2023

<b>LOT #</b>	<b>LOT #</b>
<b>2475 LOT, ASSORTED SIZE SYNCHROCHAIN CARBON BELTS W/WOOD SHELF</b>	<b>2491 LOT, ASSORTED ELECTRICS &amp; MILL PARTS W/SHELVING</b>
<b>2476 LOT, ASSORTED SIZE BELTS W/STEEL SHELF</b>	<b>2492 LOT, (9) ASSORTED METAL PARTS BINS W/CONTENTS</b>
<b>2477 LOT, ASSORTED SIZE BELTS W/METAL RACK</b>	<b>2493 LOT, EATON 25 KVA TRANSFORMER, 480/240 TO 120/240V W/SQUARE D 100 AMP/600V DISCONNECT &amp; EATON BREAKER BOX (NO WIRE OUTSIDE OF BOX)</b>
<b>2478 LOT, ASSORTED SIZE BELTS W/METAL RACK</b>	<b>2494 LOT, (10) ROLLS OF SIGNODE 3/4" STEEL BANDING</b>
<b>2479 LOT, ASSORTED SIZE BELTS</b>	<b>2495 LOT, (10) ROLLS OF SIGNODE 3/4" STEEL BANDING</b>
<b>2480 LOT, ASSORTED SIZE BELTS</b>	<b>2496 LOT, (10) ROLLS OF SIGNODE 3/4" STEEL BANDING</b>
<b>2481 CONDOR  60-GALLON FLAMMABLES CABINET</b>	<b>2497 LOT, (10) BOXES OF CORDSTRAP 1-1/4" BANDING</b>
<b>2482 CONDOR  60-GALLON FLAMMABLES CABINET</b>	<b>2498 LOT, (10) BOXES OF CORDSTRAP 1-1/4" BANDING</b>
<b>2483 FLAMMABLES CABINET</b>	<b>2499 LOT, (10) BOXES OF CORDSTRAP 1-1/4" BANDING</b>
<b>2484 LOT, LOOSE CONTENTS OF CYLINDER REPAIR SHOP</b>	<b>2500 LOT, (10) RATCHET BARS</b>
<b>2485 LOT, ASSORTED SPROCKETS W/ROLLING A-FRAME STAND</b>	<b>2501 BALDOR  40 HP MOTOR (FITS LOT 1011)</b>
<b>2486 LOT, ASSORTED BUSHINGS, COUPLERS &amp; ASSORTED ITEMS W/SHELVING</b>	<b>2502 LOT, (2) PINEAPPLE ROLLS (FITS LOT 1011)</b>
<b>2487 LOT, ASSORTED METAL PARTS BINS</b>	<b>2503 LOT, (2) 14" KNURLED ROLLS (FITS LOT 1011)</b>
<b>2488 LOT, ULINE PLASTIC STACKABLE BINS</b>	<b>2504 PLANER BED PLATE (FITS LOT 1011)</b>
<b>2489 LOT, 2-DOOR METAL CABINET W/ASSORTED ELECTRICS</b>	<b>2505 LOT, (2) NACHI VALVE ASSEMBLIES</b>
<b>2490 LOT, 2-DOOR METAL CABINET W/ASSORTED ELECTRICS</b>	<b>2506 LOT, 14" SAWS W/1" ARBOR</b>

## IDAHO FOREST GROUP ST. REGIS - DAY 3 - ONLINE AUCTION 10/12/2023-10/19/2023

<b>LOT #</b>	<b>LOT #</b>
2507 LOT, 20" SAWS W/SPLINED ARBOR	2525BNATO CL608E
2508 LOT, 22" SAWS W/SPLINED ARBOR	LABEL PRINTER
2509 LOT, 23" SAWS W/SPLINED ARBOR	2526 HITACHI CPX2521WN
2510 LOT, 23" SAWS W/SPLINED ARBOR	LED PROJECTOR
2511 LOT, 23" SAWS W/SPLINED ARBOR	2527 SMART-UPS SC
2512 LOT, ASSORTED CONDUIT FITTINGS (UNUSED)	UNINTERRUPTIBLE POWER SUPPLY
2513 LOT, ASSORTED CONDUIT FITTINGS (UNUSED)	2528 DELL POWEREDGE RS30
2514 LOT, ASSORTED CONDUIT FITTINGS (UNUSED)	SERVER
2515 LOT, ASSORTED KEY KNIVES & CHIPPER KNIVES	2529 LOT, (7) JUNIPER SYSTEMS W/(3) ALLEGRO FIELD PC'S, (2) ALLEGRO CE/DOS & (2) ALLEGRO CX HANDHELD
2516 LOT, (3) TIMKEN BEARINGS	2530 LOT, (12) VISITORS HEADSETS
2517 LOT, ASSORTED BEARINGS	2531 APC 48VDC
2518 LOT, ASSORTED BEARINGS	BATTERY MODULE (UNUSED)
2519 LOT, ASSORTED ITEMS ON THIS PALLET	2532 APC 48VDC
2520 LOT, ASSORTED ITEMS ON THIS PALLET	BATTERY MODULE (USED)
2521 LOT, ASSORTED ITEMS ON THIS PALLET	2533 LOT, ASSORTED ELECTRONICS IN THIS AREA
2522 LOT, ASSORTED SPROCKETS ON THIS PALLET	2534 LOT, ASSORTED ELECTRONICS W/THIS CABINET
2523 LOT, ASSORTED SPROCKETS ON THIS PALLET	2535 LOT, CISCO IP PHONE 7942 W/(12) UNUSED & (8) USED PHONES
2524 LOT, ASSORTED CONDUIT FITTINGS	2536 LOT, ASSORTED MOUNTING HARDWARE ON THIS PALLET
2525 LOT, ASSORTED CONDUIT FITTINGS A	2541 LOT, PIKE POLES

## IDAHO FOREST GROUP ST. REGIS - DAY 3 - ONLINE AUCTION 10/12/2023-10/19/2023

<b>LOT #</b>	<b>LOT #</b>
2542 LOT, PIKE POLES	2557 REELCRAFT
2543 LOT, PIKE POLES	HOSE REEL
2544 LOT, WHEELBARROW W/ASSORTED CLEAN UP TOOLS	2558 LOT, (2) KLUTCH AIR HOSE REELS
2545 LOT, WHEELBARROW W/ASSORTED CLEAN UP TOOLS	2559 LOT, ASSORTED PIPE & STEEL ON THIS RACK W/BANG BOARDS (BY STAIRS)
2546 LOT, WHEELBARROW W/ASSORTED CLEAN UP TOOLS	2560 LOT, ASSORTED LADDERS IN THIS AREA
2547 LOT, WHEELBARROW W/ASSORTED CLEAN UP TOOLS	2561 APPROX 16'W X 28'L X 21'H CLT CONSTRUCTED 2-STORY BUILDING W/APPROX 6-1/2" T X 48"W X 135"L CONFERENCE TABLE, BUILT-IN COUNTERTOPS & DESK SPACES, CONTENTS OF GROUND FLOOR, MARKED CATWALK & STAIRS (HEAT PUMP & A/C UNITS SOLD SEPARATELY; PLEASE CONSULT AUCTION SITE REP PRIOR TO BIDDING. MUST WAIT UNTIL EMPTY TO REMOVE)
2548 LOT, WHEELBARROW W/ASSORTED CLEAN UP TOOLS	2562 TRANE
2549 LOT, WHEELBARROW W/ASSORTED CLEAN UP TOOLS	THC092E4R0A07C0C5A1820106 HEAT PUMP SYSTEM W/DUCTING SERIAL NUMBER: 103511886L
2550 LOT, WHEELBARROW W/ASSORTED CLEAN UP TOOLS	2563 MITSUBISHI ELECTRIC MXZ-3C24NAHZ2
2551 LOT, WHEELBARROW W/ASSORTED CLEAN UP TOOLS	CONDENSING UNIT W/MODEL PKA-A30K7 SPLIT-SYSTEM HEAT PUMP, 208/230V
2552 LOT, WHEELBARROW W/ASSORTED CLEAN UP TOOLS	2564 MITSUBISHI ELECTRIC PUY-A30NHA7
2553 LOT, WHEELBARROW W/ASSORTED CLEAN UP TOOLS	CONDENSING UNIT W/MODEL MSZ-GL12NA SPLIT-SYSTEM HEAT PUMP, 208/230V
2554 LOT, WIRE CART W/WIRE	2565 APPROX 34,000 SQ FT ALL STEEL MAIN SAWMILL
2555 DAYTON	BUILDING W/APPROX 12,000 SQ FT MAIN BUILDING, (2) APPROX 8,000 SQ FT ADD-ONS & APPROX 6,000 SQ FT ADDITIONAL BUILDINGS, INCLUDES ALL UNSOLD LIGHTING, AIR & WATER LINES (NO CRANE RAIL, WIRE OR CONDUIT; PLEASE CONSULT AUCTION SITE REP PRIOR TO BIDDING)
24" FLOOR FAN	
2556 DAYTON	
24" FLOOR FAN	

## IDAHO FOREST GROUP ST. REGIS - DAY 3 - ONLINE AUCTION 10/12/2023-10/19/2023

LOT #	LOT #
<b>2566 WEMCO</b>	<b>2576 LOT, (2) ALL STEEL LOG BUNKS (LOCATED BY LOG DECKS)</b>
APPROX 60' 5-TON BRIDGE CRANE W/APPROX 320' CRANE RAILS W/POWER TROLLEY	
<b>2567 2021 KONE SX50810</b>	<b>2577 LOT, (4) STEEL LOG BUNKS W/CONCRETE BASES</b>
20-TON CABLE HOIST W/POWER TROLLEY (UNUSED)	(LOCATED IN LOG YARD)
<b>2568 2020</b>	<b>2577ZSALE MOVES S.W. OF KILN</b>
APPROX 68'W X 98'L ALL STEEL CLEAR SPAN RESIDUALS BUILDING W/APPROX 21' & 25' EAVE HEIGHTS & 29' PEAK HEIGHT, INCLUDES ALL LIGHTING (NO CRANE RAIL, WIRE OR CONDUIT; PLEASE CONSULT AUCTION SITE REP PRIOR TO BIDDING)	<b>2578 STEEL LOG BUNK</b>
<b>2569 2020</b>	<b>2579 LOT, TIMBERS &amp; CRANE MATS</b>
APPROX 20'W X 60'L ALL STEEL CLEAR SPAN STAND ALONE W/APPROX 26' EAVE HEIGHT & 30' PEAK HEIGHT	<b>2580 LOT, (2) STEEL CARTS W/FRAMES</b>
<b>2570 2020</b>	<b>2581 LOT, SELF-CONTAINED HYDRAULIC UNIT W/(3) 60 HP PUMPS, TANK HEATERS</b>
APPROX 30'W X 80'L ALL STEEL CLEAR SPAN PLANER ADD-ON BUILDING W/APPROX 24' EAVE HEIGHT & 30' PEAK HEIGHT, INCLUDES LIGHTING (NO WIRE OR CONDUIT; PLEASE CONSULT AUCTION SITE REP PRIOR TO BIDDING)	<b>2582 SAFTRONICS</b>
<b>2571 APPROX 65'W X 80'L ALL STEEL STACKER BUILDING</b>	STARTER (NO DATA)
W/APPROX 25' EAVE HEIGHT & 30' PEAK HEIGHT, INCLUDES 40'X45' INTERIOR BUILDING & ALL LIGHTING (NO WIRE OR CONDUIT; PLEASE CONSULT AUCTION SITE REP PRIOR TO BIDDING)	<b>2583 NWL</b>
<b>2575 LOT, WIRE &amp; CONDUIT THROUGHOUT MILL SITE FROM MAIN PDC/TRANSFORMER (NOT IN SALE), NO UNDERGROUND 15 KVA HIGH VOLTAGE (DOES NOT INCLUDE WIRE TO KILN/SHOP FEED; PLEASE CONSULT AUCTION SITE REP PRIOR TO BIDDING)</b>	24-1/2 KV TRANSFORMER-RECTIFIER SET, 480V, 2,040 LBS
	<b>2584 LOT, ELECTRICAL BOXES</b>
	<b>2585 LOT, ELECTRICAL BOXES</b>
	<b>2586 LOT, ELECTRICAL BOXES</b>
	<b>2587 LOT, ELECTRICAL BOXES</b>
	<b>2588 LOT, (5) MARKED ELECTRICAL CABINETS</b>
	<b>2589 LOT, (7) PALLETS OF ASSORTED ELECTRICAL</b>

## IDAHO FOREST GROUP ST. REGIS - DAY 3 - ONLINE AUCTION 10/12/2023-10/19/2023

<u>LOT #</u>	<u>LOT #</u>
2590 LOT, (4) SOLOMON 333 KVA TRANSFORMERS, 7,200/12,470Y TO 240/480V (NON-PCB)	2604 LOT, (4) PALLETS OF ASSORTED MOTORS
2591 LOT, (2) STEEL FRAMES	2605 LOT, (4) PALLETS OF ASSORTED MOTORS
2592 LOT, (2) STEEL SILOS	2606 LOT, ASSORTED MOTORS ON THIS RACK
2593 LOT, LUMBER COVERS & TIMBERS IN THIS AREA W/DIP TANK	2607 STEEL RACK
2594 LOT, KILN CARTS	2608 LOT, (4) PALLETS OF UHMW FLIGHTS
2595 LOT, ASSORTED BUILDING TIN	2609 LOT, (5) PALLETS OF ASSORTED ITEMS
2596 APPROX 8-1/2"-10'H X 7'D X 221"L METAL A CLAD WOOD FRAMED BUILDING	2610 LOT, (5) PALLETS OF ASSORTED ITEMS
2596BLOT, (2) WIRE CAGES W/PROPANE BOTTLES	2611 LOT, (11) PALLETS OF ASSORTED ITEMS
2596ZSALE MOVES NEXT TO WAREHOUSE	2612 LOT, PALLET RACKING A
2597 LOT, LOOSE CONTENTS OF THIS CONTAINER	2612BLOT, (10) PALLETS OF ASSORTED ITEMS
2598 8'X40' CARGO CONTAINER W/MARKED STEEL SHELF (MUST WAIT UNTIL EMPTY TO REMOVE)	2613 LOT, ASSORTED HOSE IN THIS AREA
2599 LOT, (2) RACKS OF METAL CONDUIT	2614 LOT, ASSORTED STEEL & FLASHING IN THIS AREA
2600 LOT, (2) RACKS OF METAL CONDUIT	2615 LOT, ASSORTED PLASTIC PIPE IN THIS AREA
2601 LOT, (1) RACK W/(1) PALLET OF PLASTIC CONDUIT	2616 LOT, ASSORTED STEEL PIPE IN THIS AREA
2602 1945 GE (NAVY)  50 HP AC/32-1/2 HP DC MG SET	2617 BRUNETTE VLS1712  12' 2-STEP MECHANICAL LOG SINGULATOR W/(2) NORD DRIVES SERIAL NUMBER: 07-110-95
2603 LOT, (4) PALLETS OF ASSORTED MOTORS	2618 60" 60 HP CHOP SAW
	2619 LOT, CONCRETE RINGS & (15) CONCRETE BARRIERS
	2620 LOT, RAILROAD SECTIONS W/TIMBERS



## IDAHO FOREST GROUP ST. REGIS - DAY 3 - ONLINE AUCTION 10/12/2023-10/19/2023

LOT #	LOT #
2620ZSALE MOVES TO FAR SOUTH OF LOG YARD	2630 LOT, ASSORTED ROLLS ON THIS PALLET A
2621 LOT, SORTER BIN ASSEMBLY	2630BLOT, ASSORTED CABLES ON THIS PALLET
2622 LOT, STACKER ASSEMBLY W/(5) LUMBER ARMS & APPROX 9' 7-STRAND 81X TRANSFER	2631 TOSHIBA  250 HP/1,785/537UZ AC MOTOR
2623 GE  1,500 KVA TRANSFORMER, 7,200-480Y/277V	2632 TOSHIBA  250 HP/1,785/537UZ AC MOTOR
2624 LOT, (3) FIBERGLASS FAN ASSEMBLIES	2633 LOT, ASSORTED SCRAP IN THIS MARKED AREA
2624ZSALE MOVES TO EAST SIDE OF LOG YARD	2634 50 HP HYDRAULIC UNIT
2625 LOT, (2) SIGNODE MP44 COMPRESSION BANDERS W/(2) STICK MAGAZINES, 10 HP HYDRAULIC UNIT, MARKED CONTROLS & ELECTRICS	2635 10 HP HYDRAULIC UNIT
2626 POWERED 14' X 4-ROLL JUMP ROLLCASE W/SM CYCLO 3 HP GEARHEAD MOTOR	2636 HYDRAULIC UNIT
2627 REESE  APPROX 48" BLOWER	2637 15 HP HYDRAULIC UNIT
2628 VK BRUNETTE CBI GRIZZLY MILL 3648  36"X48" ROTOR, 2" THICK GRATES, 4"X4" HOLES, 1-1/2"X6"X12" STICKERS, CLAMSHELL OPENING SERIAL NUMBER: 01100	2638 5 HP HYDRAULIC UNIT
2629 LOT, ASSORTED H78 CAMELBACK CHAIN ON A THESE (3) PALLETS	2639 50 HP HYDRAULIC UNIT
2629BLOT, ASSORTED H78 & 81X CHAIN ON THESE (3) PALLETS	2640 APPROX 24"X13' SECTION OF VIBRATORY CONVEYOR
	2641 NYB STYLE  APPROX 68" DIA BLOWER W/TECO 200 HP/1,185 RPM/447T FRAME AC MOTOR
	2642 LOT, (2) APPROX 30' 2-STRAND TRANSFERS W/DRIVES
	2643 APPROX 24"X52' LOG HAUL TROUGH (2 PCS)
	2644 APPROX 24"X50' TROUGHING BELT CONVEYOR W/DRIVE, AXLE & PARTIAL TROUGHING BELT CONVEYOR

**LOT #**

---

**2645 LOT, ASSORTED SCRAP IN THIS AREA**

---

**2646 APPROX 22' DRIVEN EVEN END ROLLCASE**  
W/(9) 58"  
ROLLS, GATE

---

**2647 APPROX 27"W X 37'L CONVEYOR TROUGH**  
W/S-DRIVE (NO  
CHAIN OR DRUMS)

---

**2648 LOT, APPROX 8"X14" BOX CHAIN**

---

**2649 LOT, 6"X30' LENGTHS OF ALUMINUM**  
SPRINKLER PIPE

---

**2650 LOT, MARKED SCRAP IN THIS AREA**

---

