

PUBLIC ONLINE AUCTION

INDUSTRIAL & SAWMILL SUPPLY - OVER 5,000 ITEMS UP FOR AUCTION



SIEMPELKAMP

1,500 LITER ACCUMULATOR SYSTEM



**REGISTER
TO BID @**
MURPHYAUCTION.COM



James G. Murphy Co.

Commercial & Industrial Auctioneers
P.O. Box 1127, Marysville, WA 98270

PRESORTED
FIRST CLASS MAIL
U.S. POSTAGE
PAID
SEATTLE, WA
PERMIT NO. 963

TWO DAY PUBLIC ONLINE AUCTION



HSD CORPORATION

INDUSTRIAL & SAWMILL SUPPLY - EXCESS EQUIPMENT

Day 1:

Start Date: 9:00 AM | Wednesday - October 29

End Date: 9:00 AM | Wednesday - November 5

Preview: 8:00 AM to 4:00 PM | Tuesday, November 4

Day 2:

Start Date: 9:00 AM | Thursday - October 30

End Date: 9:00 AM | Thursday - November 6

Preview: 8:00 AM to 4:00 PM | Wednesday, November 5

Location: 878 N. Boulder Ct., Post Falls, ID 83854

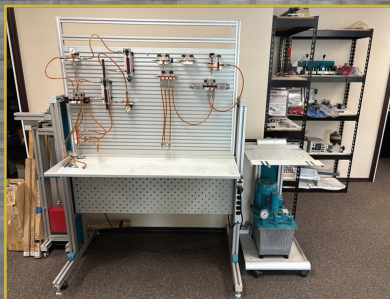
Over 5,000 Items Featuring Electrical, Frequency Drives, Gear Drives, Motors, Bearings, Hydraulic Valves & Pumps



ELECTRICAL CONTROL BOARDS



TMS TEMPOSONICS



BOSCH DS3 SYNERGY



ALLEN BRADLEY POWERFLEX 753

NO MINIMUMS - NO RESERVES

1.800.426.3008 - 425.486.1246 - MURPHYAUCTION.COM



TWO DAY PUBLIC ONLINE AUCTION - HSD CORPORATION NO MINIMUM - NO RESERVES



INDUSTRIAL & SAWMILL SUPPLY:

BOSCH DS3 SYNERGY HYDRAULIC TRAINING PLATFORM WORK STATION SYSTEM ON CASTORS W/BOSCH WV12-RGC2 TEST STATION, AMPLIFIER MODULE, (2) PORTABLE HYDRAULIC POWER UNITS, ASSORTED VALVES, ACCESSORY PARTS & HOSE

SIEMPELKAMP 1,500 LITER ACCUMULATOR SYSTEM

KAMEN 10 HP INDUSTRIAL HYDRAULIC POWER UNIT

MTS 506.01D 7-1/2 HP INDUSTRIAL HYDRAULIC POWER UNIT

MOOG SERVO VALVES

(430) TMS TEMPOSONICS LINEAR POSITION SENSORS & SENSOR PARTS

YASKAWA IMPULSE VG+ SERIES-4 FREQUENCY DRIVE

ALLEN BRADLEY POWERFLEX 753 200 HP AC DRIVE

ALLEN BRADLEY KINETIX-600 SERVO-DRIVE

BENSHAW RSI-SX SENSORLESS VECTOR DRIVE

LAHARCO LASER LASER LINE GENERATORS

PARKER/SCHRADER BELLOWS AIR VALVES

CRAFTSMAN AIR COMPRESSOR W/60 GALLON VERTICAL AIR TANK

SEW DFT90L4BMG2HR 2 HP/1,720 RPM GEARHEAD MOTOR, 230/460V, 3-PHASE

BOSCH PROPORTIONAL VALVES

GAST ROTARY VANE PUMPS

SAS FLUID POWER (2) HYDRAULIC TEST POWER UNITS, 50 HP W/287 GALLON FLUID TANK

HYDAC THERMAL EXCHANGE UNITS

ASSORTED ELECTRONIC CONTROL BOARDS TO INCLUDE: FPL ENERGY TRACE TECH POWER CONTROL BOARD W/(2) ICB-1 CARDS, INOVEC, GE, GE FANUC & FISHER ROSEMOUNT BOARDS

DIRECTIONAL VALVES TO INCLUDE: VICKER, REXROTH, BOSCH, PARKER & NACHI

ASSORTMENT OF POWER SUPPLIES TO INCLUDE: HALMAR ROBICON, CONTROL CONCEPTS, AMETEK & KELK

VARIETY OF ALLEN BRADLEY & GE POWER SUPPLIES TO INCLUDE: FUSES, OUTPUT MODULES & STARTERS

CYLINDERS TO INCLUDE: PURAKAL TEMPOSONIC, ROYAL BY WESTCOAST & OPTIMA

HYDRAULIC MOTORS & PUMPS TO INCLUDE: COMMERCIAL, LAMINA, INTERTECH, EATON, SAUER/DANFOSS

MAIN STAGE VALVES TO INCLUDE: VICKERS, PARKER, DENISON, SCHRADER BELLOWS

POWER SUPPLY UNIT TO INCLUDE: POWER-ONE & SOLA

OVER 5,000 ITEMS IN THIS TWO DAY AUCTION:

HOISTS, (6) 2 STAGE HYDRAULIC PUMPS, (17) ACCUMULATORS, (2) ADJUSTABLE SPEED DRIVES, (25) BALLASTS, (3) BEARING COVERS, (14) B-LOC SERIES KEYLESS BUSHINGS, (282) BOARDS, (3) BOLT FLANGE BEARINGS, (4) CAPACITORS, (100) CHAINS, (3) CHASSIS, (30) CIRCUIT BREAKERS, (5) CONTROL FILES, CYLINDER PARTS, (7) DISTRIBUTION PANELS, (2) DOUBLE ACTION PNEUMATIC ACTUATORS, (20) FILTERS & FILTER HOUSING, (2) EAGLE MANU. 1904 FLAMMABLE CABINETS, (40) FUSES, TOXGARD GAS MONITOR, (10) MAC CABE H-BEAM CONDUCTORS, (45) HYDRAULIC CYLINDERS, (75) HYDRAULIC MOTORS, (38) HYDRAULIC PUMPS, (10) I/O BOARDS, (51) INTERFACE MODULES, (29) LOCKNUT/LOCK WASHERS, (14) LUBRICATORS, (8) MST BUSHINGS, (13) OUTPUT MODULES, (30) PILLOW BLOCK BEARINGS, (96) POLY CHAIN BELTS, (78) POWER SUPPLIES, (30) PROGRAMMABLE CONTROLLERS, (10) REGULATORS, (6) ROLL DRIVE & UNIVERSAL JOINT W/SHAFTS, (5) SOLENOID OPERATED DIRECTIONAL VALVES, (14) SPLIT TAPER BUSHING & COUPLERS, (61) SPROCKETS, (15) STARTERS, (13) THERMOCOUPLE INPUTS, (29) VALVES, (71) MAIN STAGE VALVES, (165) DIRECTIONAL VALVES, (68) PRESSURE GAUGES, (3) PULSE DISTRIBUTORS, (6) OIL BATH FILTER HOUSINGS, (8) TRANSFORMERS, (108) METERS, (25) SWITCHES, (56) LASER LINE MARKER & POWER SUPPLIES, (52) HYDRAULIC FILTERS, (40) HYDRAULIC FILTER HOUSING, (4) THERMAL EXCHANGE UNITS, (15) HEAVY DUTY SAFETY SWITCHES, (8) SOLENOID VALVES, (80) SERVO VALVES, (484) LINEAR POSITION SENSORS & PARTS, (21) PROPORTIONAL DIRECTIONAL VALVES, (11) BALL VALVES, (6) MITUTOYO MICROMETERS, (4) HYDRAULIC TEST POWER UNITS, (2) HYDRAULIC POWER UNITS, (6) HYDRAULIC PUMPS, (5) GAST LUBRICATED 65 SERIES ROTARY VANE PUMPS, (8) FLOW CONTROL VALVES, ASSORTED CONVEYOR ROLLERS & PARTS, (3) MAC HYDRAULIC PILOT CONTROL ASSEMBLIES, ASSORTED HOSES, (8) LOAD CONTROL VALVES, ASSORTED POWER SUPPLIES, (6) MOTOR SHAFT HOUSINGS, VALVE PARTS, KNURLED ROLLS **AND MUCH MORE!**



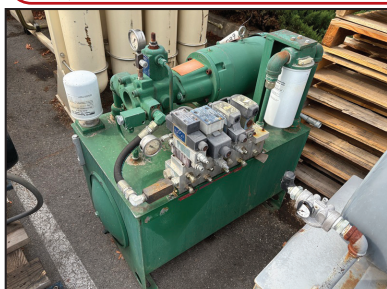
**REGISTER
TO BID @
MURPHYAUCTION.COM**



SCAN HERE
FOR FULL
PREVIEW



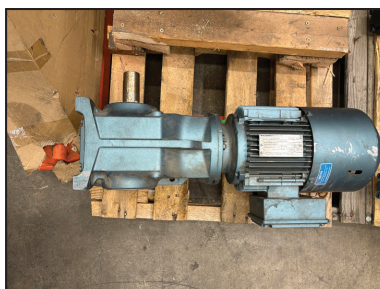
MOOG



KAMEN



HYDAC



SEW DFT90L4BMG2HR



YASKAWA IMPULSE VG+ SERIES-4



CHAINS & SPROCKETS



ASSORTED HYDRAULIC VALVES

TERMS & CONDITIONS

- 13% BUYERS PREMIUM ON ALL PURCHASES -
PAYMENT: FULL PAYMENT MUST BE MADE BY
5:00 PM - THURSDAY, NOVEMBER 6TH.

REMOVAL: ITEMS MUST BE REMOVED NO LATER THAN
4:00 PM - NOVEMBER 13TH. ***NO WEEKEND REMOVAL***

REMOVAL HOURS: 8:00 AM - 4:00 PM NOVEMBER 7TH THRU 13TH

WARRANTY DISCLAIMER: ALL SALES ARE FINAL.

ALL ITEMS ARE BEING SOLD "AS IS, WHERE IS," WITH ALL FAULTS AND
WITHOUT ANY WARRANTIES AS TO MERCHANTABILITY.

**COMPLETE TERMS AND CONDITIONS OF SALE WILL BE
AVAILABLE AT THE TIME OF SALE.**

MURPHYAUCTION.COM FOR ADDITIONAL INFORMATION