

AUCTION CATALOG

HAMPTON LUMBER COMPANY - BANKS

13620 NW COMMERCE STREET – BANKS, OR 97106

Start Date: 10 AM – Wednesday, May 29th

End Date: 10 AM – Wednesday, June 5th

Preview Date: 8:00 AM – 4:00 PM – Tuesday, June 4th, 2024

THERE IS A FORKLIFT AVAILABLE FOR REMOVAL FOR SMALL PALLETED ITEMS UNTIL FRIDAY, JUNE 14TH

TERMS AND CONDITIONS

13% BUYERS PREMIUM ON ALL ITEMS

PAYMENT: Full payment must be made by no later than 5 PM, Friday, June 7th. Payment must be made by CASHIERS CHECK, WIRE TRANSFERS OR ONLINE CREDIT CARD ONLY. Checks are accepted ONLY with Bank Letter of Guarantee.

REMOVAL: ALL SMALL ITEMS MUST BE REMOVED BY NO LATER THAN 4 PM FRIDAY, JUNE 14TH, ALL OTHER ITEMS MUST BE REMOVED BY FRIDAY, OCTOBER 4TH.
Removal hours: 7:00 AM – 5:00 PM, Monday through Friday. NO WEEKEND OR HOLIDAY REMOVAL. **POWER WILL BE SHUT OFF AT SITE ON MONDAY, JUNE 17TH**.

Upon award of bid dismantlers take responsibility for any environmental issues they create (e.g. spilled hydraulic oil). Dismantlers are required to provide their own materials to contain & clean up any oil spillage.

Insurance: Anyone removing equipment that requires rigging, cutting and dismantling property is required to provide \$5,000,000.00 dollar General Liability Insurance certificate showing the James G. Murphy Co. & Hampton Lumber Company as the additional insured parties. Insurance certificate and proof of workers compensation compliance must be on file at sale site and with the James G. Murphy Co. before dismantling commences. Additionally, Hampton will be looking into any past Workmen's Comp claims before approving work on their property.

Purchased lots are at the buyer's risk. It is the responsibility of the buyer to provide adequate property insurance coverage for the items purchased and buyer's own equipment at the auction site.

FIRE PROTECTION POLICY: NO CUTTING WITHOUT A PERMIT

- Dismantlers required to provide their own fire hose & spray nozzles.
- A signed burning permit issued to dismantlers will be displayed in cutting area
- A limited number of burning permits will be issued. One burning permit per hose while cutting.
- Each man using a cutting torch will have one firewatch with a hose while cutting
- Firewatch to wet down before, during and after cutting.
- Firewatch to stay in area one hour after cutting is completed
- Cutting hours are from 7 AM to 3:00 PM

Warranty Disclaimer: ALL SALES ARE FINAL. All items are being sold "As Is, Where Is," With All Faults and without any warranties as to merchantability of fitness for a particular purpose. The principal, the auctioneer, the advertising coordinator, and any of their agents makes no express or implied warranties of any type. Complete terms and conditions of sale will be available at the time of sale. All information was obtained from sources deemed reliable. Although every precaution has been taken to ensure accuracy, the principal, the James G. Murphy Co., the advertising coordinator, and all of their agents shall not be responsible for any errors or omissions therein. It is for this reason that we recommend that all items be thoroughly inspected prior to the point of sale.

James G. Murphy Co.

PO Box 1127 – Marysville, WA 98270

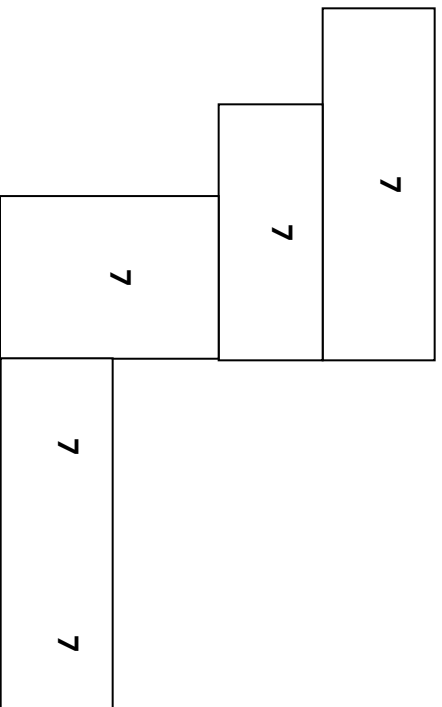
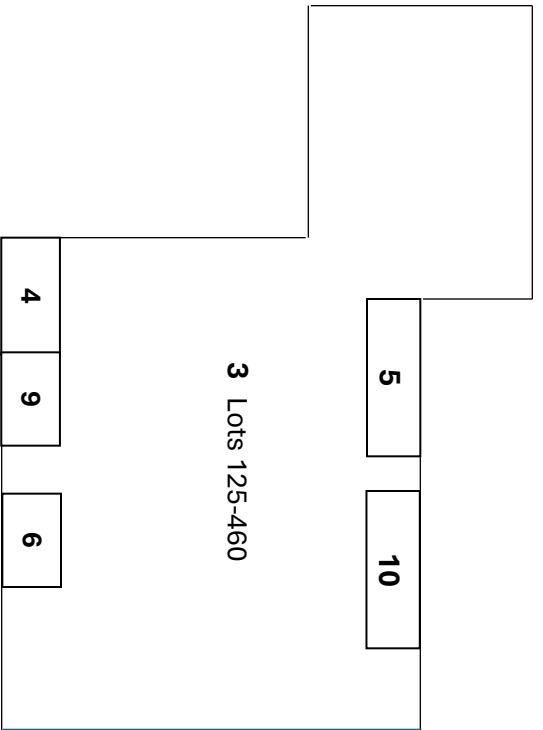
1-800-426-3008

Oregon Office: 5605 Inland Shores Way N., Suite 102 - Keizer, Oregon 97303

(503) 463-4444

murphyauction.com

HAMPTON LUMBER – BANKS

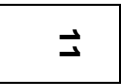
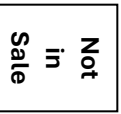
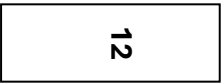


MAP KEY

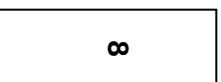
- 1. Office
- 2. Rolling Stock – 1-16
- 3. Sawmill – Lots 125-460
- 4. Shop – Lots 21-124
- 5. Filing Room – Lots 211-230
- 6. Grinding Room – Lots 280-310
- 7. Planer Mill – Lots 461-600
- 8. Pellet Mill – Lots 601-750
- 9. Electrical – Lots 751-785
- 10. Parts Room – Lots 786-820
- 11. Breakroom Tools – Lots 851-892
- 12. Trailer Area – Lots 821-850B
- 13. * Bathrooms
- 14. Parking
- 15. No smoking on mill site

***13**

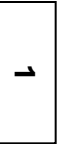
2 Rolling Stock Lots 1-16



***13**



PARKING



PARKING

14 & 15





James G. Murphy Co.
PO BOX 1127
Marysville, WA 98270
Toll Free - 1.800.426.3008
murphyauction.com

HAMPTON LUMBER COMPANY - ONLINE AUCTION 5/29/2024-6/5/2024

LOT #

1 2018 WAGNER L90

2WD NEW GENERATION 45-TON LOG STACKER (WAS IN A FIRE & RECONDITIONED BY ALLIED WAGNER & OTHERS. REBUILD LIST AVAILABLE UPON REQUEST), CUMMINS TIER IV DIESEL ENGINE, AUTOMATIC POWER SHIFT TRANSMISSION, ROTATING OPERATOR PLATFORM, WAGNER SMART SCREEN, DUAL PLANETARY REDUCTION AXLES, FORCE COOLED WET BRAKES, AUTO FIRE SUPPRESSION SYSTEM, GROUND LEVEL SERVICE BAY, S/N:L9139 (NOTE: THERE IS A \$460,000 STARTING BID ON THIS ITEM. AN APPOINTMENT TO ITEM IS LOCATED AT ALLIED SYSTEM CO. IN SHERWOOD, OREGON. PLEASE CONTACT CHAD FARRIS AT 503-939-7460 FOR AN APPOINTMENT TO PREVIEW)
SERIAL NUMBER: L9139

2 1995 WAGNER L490S

LUMBER JACK 4WD LOG LOADER, CUMMINS KT-19C, 450 HP ENGINE, CLARK 8000 SERIES POWER SHIFT TRANSMISSION, CLARK 8000 SERIES CONVERTER, FIRE SUPPRESSION SYSTEM, 33.5X33 & 29.5X29 TIRES, HOUR METER READS: 16,937 (REBUILD LIST AVAILABLE UPON REQUEST)
SERIAL NUMBER: 057131

3 2006 LINKBELT 350LXTL

CRAWLER LOG LOADER, ISUZU 6HK1 ENGINE (NEW IN 2021), PIERCE HLB-2542TC60 BOOM & 60" GRAPPLE, 28" DOUBLE GROUSER TRACKS, AC CAB, REPLACED MAIN HYDRAULIC PUMP, ALL HYDRAULIC HOSES UNDER HOOD, MAIN CONTROL VALVE, HOUR METER READS: 4,700 SINCE REBUILD; 45,835 TOTAL HOURS (REBUILD LIST AVAILABLE UPON REQUEST)
SERIAL NUMBER: K6J6-1305

LOT #

4 1993 CAT 980F

RUBBER TIRE LOG LOADER, CAT 11' GP BUCKET, CAT 3406 DIESEL ENGINE, POWER SHIFT TRANSMISSION, LOAD RIGHT PRO SCALES, 23.5-25 TIRES, HOUR METER READS: 37,432 (REBUILD LIST AVAILABLE UPON REQUEST)
SERIAL NUMBER: 8CJ01041

5A 2008 GENIE Z45/25J

4X4 5,000 LB CAP MANLIFT, PROPANE, 50' BOOM, 48V, HOUR METER READS: 3,943
SERIAL NUMBER: Z452508A-37976

5B 2002 FREIGHTLINER FL70

DUAL WHEEL FLATBED TRUCK W/22' STEEL FLATBED, CAT 3126 DIESEL ENGINE, AUTO, NEW ABS BRAKE SYSTEM, ODOMETER READS: 151,000 MILES
SERIAL NUMBER: 1FVABTAKX2HJ86557

6 2002 YALE GDP110MJNP

11,000 LB CAP DIESEL FORKLIFT, 197" 2-STAGE MAST, FORK PLACERS, SIDE SHIFT, 60" FORKS, DUAL SOLID TIRES, HOUR METER READS: 19,037
SERIAL NUMBER: C813V02308Z

7 2013 JOHN DEERE 318D

SKID STEER, 6' QC BUCKET, JOHN DEERE E4024HT 63 HP TURBO CHARGED DIESEL ENGINE, REPLACED BOTH HYDRAULIC MOTORS, SEALS & CHAINS IN 2021, HOUR METER READS: APPROX. 1,000 SINCE REBUILD, APPROX. 3,000 TOTAL HOURS (REBUILD LIST AVAILABLE UPON REQUEST)
SERIAL NUMBER: 1T0318DAEDG242420

8 2010 CHEVROLET SILVERADO 1500

4X4 QUAD CAB PICKUP, GAS, AUTO, ODOMETER READS: 203,197

HAMPTON LUMBER COMPANY - ONLINE AUCTION 5/29/2024-6/5/2024

LOT #	LOT #
SERIAL NUMBER: 3GCRKSE38AG286953	22 LINCOLN ELECTRIC 140C POWER MIG
9 2014 CLUB CAR XRT1550	WIRE FEED WELDER ON CART W/CASTERS, 120V, SINGLE PHASE
4X4 UTV, DIESEL, HOUR METER READS: 1,891 SERIAL NUMBER: RY1411446013	23 LINCOLN ELECTRIC FLEXTEC 500X
10 SET OF (2) LOG BUNKS	MULTI-PROCESS WELDING POWER SOURCE, 415/460/575V, 3-PHASE
11 SET OF (2) LOG BUNKS	24 MILLER MILLERMATIC 141
12 SET OF (2) LOG BUNKS	WIRE FEED WELDER, 120V, SINGLE PHASE
13 SET OF (2) LOG BUNKS	25 MILLER MILLERMATIC 141
14 SET OF (2) LOG BUNKS	WIRE FEED WELDER, 120V, SINGLE PHASE
15 SET OF (2) LOG BUNKS	26 MILLER MILLERMATIC 141
16 WIG WAG	WIRE FEED WELDER, 120V, SINGLE PHASE
SINGLE CAR CHIP LOADING STATION W/PORLAND IRON WORKS CABLE WINCH, SAFETY LINE W/STEEL STAND, PIPING TO MILL BUILDING W/STANDS	27 MILLER ARCREACH SUITCASE 8
17 RICE LAKE 480 LEGEND PLUS	PORTABLE WELDING WIRE FEEDER
SCALE, 20,000 LB X 5 LB, 5'X9' PLATFORM SERIAL NUMBER: 54381	28 LINCOLN ELECTRIC MAGNUM SG
19 CUSTOM BUILT DUAL TRUCK UNLOADING STATION	WIRE FEED WELDING CONTROL MODULE W/SPOOL GUN, 115V
20 LOT, ASSORTED YARD BUNKS IN THIS AREA	29 ELLIS MFG CO 1600
SALE MOVES TO MAINTENANCE SHOP (MORE TOOLS SELL AT LOTS 851-892)	MITER BANDSAW W/LEESON 1 HP ELECTRIC MOTOR, 115/208-230V, SINGLE PHASE
21 LINCOLN ELECTRIC FLEXTEC 650X	30 NANTONG MACHINE TOOL WORKS XU6323S
MULTI-PROCESS WELDING POWER SOURCE W/LF-72 WIRE FEEDER ON CART W/CASTERS, 380/460/575V, 3-PHASE	RADIAL UNIVERSAL MILLING MACHINE, WORKING TABLE LENGTH 1,067 MM, WIDTH 230 MM, 220V, 3-PHASE
	31 ORBIT MACHINE TOOLS OR-2501
	12-SPD INDUSTRIAL DRILL PRESS W/CENTURY ELECTRIC MAGNETEK ELECTRIC MOTOR, 115/230V, SINGLE PHASE

HAMPTON LUMBER COMPANY - ONLINE AUCTION 5/29/2024-6/5/2024

LOT #	LOT #
32A BALDOR/RELIANCE 7306D BENCHTOP GRINDER/BUFFER, 115/230V	42 LOT, ASSORTED MANUAL CONDUIT BENDING TOOLS
32B OREGON CHAIN SHARPENER	43 SKOOKUM 412A 17-1/2 TON SNATCH BLOCK RIGGING PULLEY
33 DEWALT DWS780 12" DOUBLE BEVEL SLIDING COMPOUND MITER SAW W/COLLAPSIBLE STAND, 120V	44 SKOOKUM 412A 17-1/2 TON SNATCH BLOCK RIGGING PULLEY
34 DEWALT DWS715 12" COMPOUND MITER SAW, 120V	45 GREENLEE GP6500E 6,500 WATT RUNNING, 8,000 WATT STARTING PORTABLE GAS GENERATOR, HOUR METER READS: 360
35 DEWALT DXPW3300 3,300 PSI PORTABLE GAS PRESSURE WASHER	46 BLACK & DECKER 42 5/8" HEAVY DUTY ELECTRIC DRILL W/BUX MAGNETIC BASE, 115V
36 LOT, (2) NILFISK & (1) RIDGID SHOP VACS, 120V	47 2022 CLIMAX KM3000 KEY MILL W/MINARIK CORP MM23101C-0846 POWER CONTROL MODULE
37 RIDGID 700-T2 PORTABLE HANDHELD PIPE THREADER W/ASSORTED DIES & TOOLING, 120V	48 2022 CLIMAX KM3000 KEY MILL W/MINARIK CORP 20000 POWER CONTROL MODULE
38 RIDGID 300 PORTABLE POWER THREADING MACHINE ON TRI-STAND W/FOOT CONTROL, DIES, TOOLING & OILER, 120V	49 CLIMAX 65 KEY MILL, 115V
39 RIDGID 450 PORTABLE TRI-STAND PIPE VISE W/(2) DEBRIS CATCH BASINS/OILERS	50 STIHL MS362C HANDHELD GAS CHAINSAW W/24" BAR
40 GREENLEE 555C PORTABLE ELECTRIC CONDUIT BENDER FOR 1/2"-2" CONDUIT, 120V	51 STIHL MS461 HANDHELD GAS CHAINSAW W/32" BAR
41 GREENLEE 1800 PORTABLE MECHANICAL BENDER FOR 1/2", 3/4" & 1" IMC RIGID STEEL & ALUMINUM CONDUIT	52 STIHL MS250 HANDHELD GAS CHAINSAW W/16" BAR

HAMPTON LUMBER COMPANY - ONLINE AUCTION 5/29/2024-6/5/2024

LOT #	LOT #
53 STIHL MS250 HANDHELD GAS CHAINSAW W/16" BAR	64 POSI LOCK 116 GEAR & BEARING PULLER
54 STIHL MS250 HANDHELD GAS CHAINSAW W/16" BAR	65 TIMBER LIFTING TONGS
55 STIHL MS250 HANDHELD GAS CHAINSAW W/16" BAR	66 LOT, (2) JET 5-TON BEAM CLAMPS & ASSORTED LIFTING HOOKS & CLAMPS
56 STIHL MS250 HANDHELD GAS CHAINSAW W/16" BAR	67 LOT, COLUMBUS MCKINNOR CORP (2) CBTP 1-1/2 TON CAP & (1) 633 2 TON CAP BALL BEARING TROLLIES
57 STIHL MS251 HANDHELD GAS CHAINSAW W/16" BAR	68 ENERPAC HUSHH-PUP PEM2021 10,000 PSI PORTABLE HYDRAULIC PUMP, 115/230V
58 STIHL MS271 HANDHELD GAS CHAINSAW (NO BAR)	69 LOT, ENERPAC MANUAL HYDRAULIC PUMP W/ASSORTED HYDRAULIC CYLINDERS & HYDRAULIC SPREADER IN THIS BOX
59 STIHL MS250 HANDHELD GAS CHAINSAW (NO BAR)	70 LOT, (4) STARK, (1) OMEGA & (1) PRO-LIFT 20 TON HYDRAULIC BOTTLE JACKS
60 STIHL MS170 HANDHELD GAS CHAINSAW (NO BAR)	71 LOT, ASSORTED LIFTING CHAINS
61 LOT, (2) SELF-RETRACTING FALL PROTECTION SAFETY LINES & ASSORTED FALL ARREST HARNESS ATTACHMENTS	72 HARRINGTON LB030 3 TON LEVER CHAIN HOIST
62 LOT, ASSORTED CONTRACTORS SUPPLIES TO INCLUDE WELDING ELECTRODES, CARBON GOUGING ELECTRODES, GRINDING WHEELS, PPE, SAFETY WARNING SIGNS, COMPUTER SCREEN & PRINTER ON THESE SHELVES	73 HARRINGTON LB030 3 TON LEVER CHAIN HOIST
63 LOT, ASSORTED USED & UNUSED POLYESTER LIFTING SLINGS ON THESE HOOKS	74 HARRINGTON LB028 2-3/4 TON LEVER CHAIN HOIST
	75 HARRINGTON LB028 2-3/4 TON LEVER CHAIN HOIST

HAMPTON LUMBER COMPANY - ONLINE AUCTION 5/29/2024-6/5/2024

LOT #	LOT #
76 HARRINGTON LB028 2-3/4 TON LEVER CHAIN HOIST	87 OXY/ACETYLENE GAS HOSE W/REGULATORS & TORCH
77 HARRINGTON LB015 1-1/2 TON LEVER CHAIN HOIST	88 OXY/ACETYLENE GAS HOSE W/TORCH
78 HARRINGTON LB015 1-1/2 TON LEVER CHAIN HOIST	89 OXY/ACETYLENE GAS HOSE W/REGULATORS & TORCH
79 JET S90-150 1-1/2 TON HAND CHAIN HOIST	90 OXY/ACETYLENE GAS HOSE W/REGULATORS & TORCH
80 JET S90-50 1-1/2 TON HAND CHAIN HOIST	91 OXY/ACETYLENE GAS HOSE W/REGULATORS & TORCH
81 LOT, ASSORTED SCREW PIN ANCHOR SHACKLES & PICKING EYE	92 OXY/ACETYLENE GAS HOSE W/REGULATORS, TORCH & CUTTING TIPS
82 LOT, ASSORTED CONTRACTORS SUPPLIES & TOOLS TO INCLUDE PIPE WRENCHES, SAW BLADES, SOCKETS, THREADING & SHIM SETS ON THESE (3) SHELVES & UNDER SHELVES (DOES NOT INCLUDE WELDING ELECTRODE OVEN)	93 LOT, (1) LINCOLN ELECTRIC 225A MAGNUM PRO SEMI-AUTOMATIC MIG WELDING GUN & (1) THERMAL DYNAMICS 300 PRECISION PLASMA CUTTING TORCH HEAD (UNUSED)
83 DRY ROD 300 ELECTRODE STABILIZING OVEN, 120V	94 ULTRA-FLEX 600V SAE J1127 WELDING CABLE W/SMAW STINGER (MALE CABLE PLUG NEEDS TO BE REPLACED)
84 VICTOR 100 OXY/ACETYLENE CUTTING MACHINE W/12' TRACK, 110V	95 LOT, (2) WELDING CABLES W/SMAW STINGER
85 OXY/ACETYLENE GAS HOSE W/REGULATORS & TORCH	96 LOT, ASSORTED MIG WELDING GUNS, GROUND CABLE & CARBON ARC GAUGING TORCHES
86 OXY/ACETYLENE GAS HOSE W/TORCH	97 LOT, ASSORTED ELECTRICAL
	99 SPEEDAIRE 48UY04 30 GALLON, 135 PSI PORTABLE ELECTRIC AIR COMPRESSOR, 120/240V

HAMPTON LUMBER COMPANY - ONLINE AUCTION 5/29/2024-6/5/2024

LOT #	LOT #
100A SPEEDAIRE 48UY04	108 DAYTON 2MA10B
30 GALLON, 135 PSI PORTABLE ELECTRIC AIR COMPRESSOR, 120/240V	24" COMMERCIAL AIR CIRCULATOR, 120V
100B SPEEDAIRE 48UY04	109 OXY/ACETYLENE SET ON STEEL CASTERS
30 GALLON, 135 PSI PORTABLE ELECTRIC AIR COMPRESSOR, 120/240V	110 LOT, (1) GAS CYLINDER CART & (2) HAND TRUCKS
101 NAPA	W/PNEUMATIC TIRES
20 GALLON, 135 PSI PORTABLE AIR COMPRESSOR W/2 HP ELECTRIC MOTOR, 115V	111 LITTLE GIANT
102 NAPA 824252PAT	3'X2' SUPPLY CART W/PNEUMATIC TIRES & REMOVABLE HANDLE
20 GALLON, 135 PSI PORTABLE AIR COMPRESSOR W/CENTURY 2 HP ELECTRIC MOTOR, 115V (POWER PLUG IS MISSING)	112 LOT, (1) WALK-BEHIND DRAG MAGNET & (2)
103 NAPA 824252PAT	WALK-BEHIND AEROSOL STRIPING CARTS
20 GALLON, 135 PSI PORTABLE AIR COMPRESSOR W/CENTURY 2 HP ELECTRIC MOTOR, 115V (POWER PLUG IS MISSING)	113 LOT, ASSORTED PRY BARS & SLEDGE HAMMERS
104 LOT, (1) FOSTORIA FSP-9548-3 HAND TRUCK MOUNTED & (1) FSP-3148-1 METAL BASE MOUNTED INFRARED HEATERS, 480V (POWER PLUG IS MISSING ON METAL BASE MOUNTED HEATER)	114 18"X34"X35" 8-DRAWER TOOLBOX ON CASTERS (NO LOCK)
105 LOT, (1) FOSTORIA FSP-4348-3 & (1) FSP-4324-3	115 LOT, RIDGID 48R-OS 24"X48"X29" TOOL STORAGE CHEST W/ASSORTED CONTRACTORS TOOLS
HAND TRUCK MOUNTED INFRARED HEATERS, 480V, SINGLE & 3-PHASE	116 LOT, (5) APPROX 60" CHAINSAW BARS
106 LOT, (2) FOSTORIA FSP-4348-3 HAND TRUCK MOUNTED INFRARED HEATERS, 480V, SINGLE & 3-PHASE	117 LOT, (6) APPROX 60" CHAINSAW BARS
107 LOT, (1) FOSTORIA FSP-4348-3 HAND TRUCK MOUNTED INFRARED HEATER, 480V, SINGLE & 3-PHASE & (1) PATTON PUH680-N 1,500 WATT PORTABLE SPACE HEATER, 120V	118 LOT, (6) APPROX 60" CHAINSAW CHAINS
	119 LOT, (1) SHOP PRESS W/ENERPAC HYDRAULIC PUMP, (1) LEESON 1 HP ELECTRIC MOTOR, 115V & (1) STATIONARY STEEL CONVEYOR STAND
	SALE MOVES TO DEBARKER AREA

HAMPTON LUMBER COMPANY - ONLINE AUCTION 5/29/2024-6/5/2024

LOT #	LOT #
<p>125 APPROX 25' 9-STRAND H124 CHAIN SPLIT INFEED LOG DECK W/S-DRIVES, (2) 4-ARM LOG STOP & LOADERS, STEEL PLATE & MARKED STEEL SUPPORTS</p>	<p>133 ALLEN BRADLEY LOGIX 5561 PLC W/(9) ASSORTED CARDS (NO WIRE OUTSIDE OF BOX)</p>
<p>126 SKK 15 HP/20 RPM DOUBLE REDUCTION GEARHEAD MOTOR W/DRIVE CHAIN (DRIVE FOR LOT 125)</p>	<p>134 SQUARE D 6 6-SECTION MCC W/(25) SWITCHES (NO WIRE OUTSIDE OF BOX)</p>
<p>127 SKK 15 HP/20 RPM DOUBLE REDUCTION GEARHEAD MOTOR W/DRIVE CHAIN (DRIVE FOR LOT 125)</p>	<p>135 SAFTRONICS AS180 200 HP REDUCED VOLTAGE SOFT START (HOG, NO WIRE OUTSIDE OF BOX)</p>
<p>128 SALEM BRUNETTE MARK II 35" 5-ARM RING DEBARKER W/EXTENSIVE REBUILD IN MARCH 2022, AIR SEAL, AUTO CENTERING DISC TYPE INFEED, APPROX 100 HP RING DRIVE, WEG 50 HP/1,180 RPM FEED DRIVE, IN & OUTFEED HOLD DOWNS, MARKED FEED ROLLS, MARKED CONTROLS & ELECTRICS, MARKED 30 HP, 10 HP & 5 HP HYDRAULIC UNITS, MARKED STEEL BUILDING, CATWALK, STAIRS & SUPPORTS (REBUILD LIST AVAILABLE UPON REQUEST, SPARE PARTS SOLD SEPARATELY AT LOTS 651-659 & 810)</p>	<p>136 SAFTRONICS AF6 100 HP REDUCED VOLTAGE SOFT START (NO WIRE OUTSIDE OF BOX)</p>
<p>129 APPROX 50' 6"X12" HD W/FLITES CHAIN INFEED LOG HAUL TO DEBARKER, NEW CHAIN, SPROCKETS, UHMW, OREGON BEND, PLATE (COMPLETELY REBUILT)</p>	<p>137 SAFTRONICS GP10 VECTOR AC DRIVE, 100 HP (BARKER; NO WIRE OUTSIDE OF BOX)</p>
<p>130 6' BAR TYPE WHOLE LOG CUT OFF SAW W/25 HP MOTOR & HYDRAULIC UNIT (SPARE BARS & CHAINS SOLD AT LOTS 116-118)</p>	<p>138 LOT, MARKED ELECTRICS IN THIS AREA (NO WIRE OUTSIDE OF BOX)</p>
<p>131 APPROX 30' DISC TYPE INFEED ROLLCASE W/LOG SAW CRADLE & (8) STOP GATES</p>	<p>139 LINCOLN IDEALARC R3R-400 DC WELDER W/LEAD IN THIS ROOM</p>
<p>132 SKK 10 HP/56 RPM GEARHEAD MOTOR W/DRIVE CHAIN (DRIVE FOR LOT 130)</p>	<p>140 APPROX 24' 6-STRAND H124 CHAIN RE-ENTRY LOG DECK, S-DRIVE, STEEL PLATE & MARKED SUPPORTS TO GROUND</p>
	<p>141A APPROX 10 HP MOTOR TO REX ORION REDUCER (NO DATA) W/DRIVE CHAIN (DRIVE FOR LOT 129)</p>
	<p>141B APPROX 15' 3-ARM HYDRAULIC DRIVEN WINDMILL KICKER W/DRIVE, BEARINGS & SUPPORTS</p>

HAMPTON LUMBER COMPANY - ONLINE AUCTION 5/29/2024-6/5/2024

LOT #	LOT #
<p>142 APPROX 36' 4-STRAND H124 CHAIN LOG TRANSFER DECK, S-DRIVE, STEEL PLATE & MARKED SUPPORTS</p>	<p>151 SKK 10 HP/30 RPM GEARHEAD MOTOR W/DRIVE CHAIN (DRIVE FOR LOT 150)</p>
<p>143 SKK 7-1/2 HP/30 RPM DOUBLE REDUCTION GEARHEAD MOTOR W/DRIVE CHAIN (DRIVE FOR LOT 142)</p>	<p>152 APPROX 50' 6"X12" HD W/FLITES CONVEYOR (FROM HOG), H&T SPROCKETS, STEEL TROUGH</p>
<p>144 LOT, APPROX 18' 4-STRAND H84 CHAIN LOG TRANSFER W/APPROX 9' 4-STRAND H78 CHAIN LOG TRANSFER, ALL SHAFTS & SPROCKETS, STEEL PLATE & MARKED SUPPORTS</p>	<p>153 SKK 10 HP/56 RPM GEARHEAD MOTOR W/DRIVE CHAIN (DRIVE FOR LOT 152)</p>
<p>145 SKK 7-1/2 HP/30 RPM DOUBLE REDUCTION GEARHEAD MOTOR W/DRIVE CHAIN (DRIVE FOR LOT 144)</p>	<p>154 APPROX 15' HYDRAULIC OPERATED BARK BIN W/NEW GATES & 15 HP HYDRAULIC UNIT</p>
<p>146 MANCHESTER 400 GALLON AIR RECEIVER TANK (NO PIPING)</p>	<p>155 APPROX 70' 6"X12" BOX CHAIN W/FLITES CONVEYOR (TO LOT 154) W/DRIVE, H&T SPROCKETS, STEEL TROUGH</p>
<p>147 2021 ALLIANCE 2432 HDSS HAMMER HOG W/TOSHIBA 100 HP/1,170 RPM/230V MOTOR, 24"X32" SUPER ROTOR, (12) 28 LB HAMMERS ON 12-PIN ROTOR, SPLIT TOP, FREE FLOW SCREEN GRATES SERIAL NUMBER: 215575</p>	<p>SALE MOVES UPSTAIRS TO CARRIAGE AREA</p> <p>161 2002 SALEM APPROX 42"X20' 3-KNEE TEMPOSONIC POSITIONED CARRIAGE W/(6) BOARD DOGS, (3) LOG FLIPPERS, PANTOGRAPH, 9'X18' CONTROL CAB, CONTROLS, ELECTRICS, MARKED SUPPORT STRUCTURE (NEW WHEELS & RAIL INSTALLED IN SEPTEMBER 2023, REBUILD LIST AVAILABLE UPON REQUEST) SERIAL NUMBER: 20446-06</p>
<p>148 APPROX 40' 6"X11" BOX CHAIN INFEED CONVEYOR, H&T SPROCKETS, STEEL TROUGH</p>	<p>162 IES 300 HP DC CARRIAGE DRIVE W/300 HP/1,150-2,000 RPM/500V DC MOTOR TO FALK 465A2-5 30 HP RATED REDUCER, 1,170 RPM INFEED, 98 RPM OUTFEED, BUMPERS, HYDRAULIC TAKE UP, CABLE & REEL (SPARE DC DRIVE SOLD AT LOT 601, NO WIRE OUTSIDE OF BOX)</p>
<p>149 SKK 5 HP/45 RPM GEARHEAD MOTOR W/DRIVE CHAIN (DRIVE FOR LOT 147)</p> <p>SALE MOVES DOWNSTAIRS</p>	<p>163 IES SAFTRONICS KDC 12-1250-4 DC CARRIAGE DRIVE W/PARKER INTEGRATOR 590+ SERIES 2 DIGITAL 300 HP DRIVE, 440 KVA ISOLATION TRANSFORMER (NO WIRE OUTSIDE OF BOX)</p>
<p>150 APPROX 120' 6"X12" BOX CHAIN W/FLITES (BARKER), CLEAN OUT CONVEYOR W/H&T SPROCKETS, STEEL TROUGH, MARKED SLOPING</p>	

HAMPTON LUMBER COMPANY - ONLINE AUCTION 5/29/2024-6/5/2024

LOT #	LOT #
<p>165 2006 NELSON BROS</p> <p>SURROUND SCAN SCANNER OPTIMIZER W/(24) JOE SCAN JS20D1 SCAN HEADS & SUPPORT EQUIPMENT</p>	<p>173 APPROX 28"X32' OUTFEED ROLLCASE W/(11) CHROMED ROLLS, SUPPORT FRAME</p>
<p>166 HYDRAULIC OPERATED LOG TURNER W/5-ARM LS&L & 5-ARM LOG KICKER</p>	<p>174 SKK</p> <p>5 HP/100 RPM GEARHEAD MOTOR W/DRIVE CHAIN (DRIVE FOR LOT 173)</p>
<p>167 MONARCH</p> <p>6' RH VERTICAL BAND HEADRIG W/MILL AIR STRAIN (NEW WHEELS IN 2021, REBUILD LIST AVAILABLE UPON REQUEST), APPROX 150 HP/1,800 RPM MOTOR, APPROX 45"X24' OUTFEED ROLLCASE W/APPROX 8' 5-STRAND H78 JUMP TRANSFER, ALL DRIVES, CONTROLS & ELECTRICS (SPARE PARTS SOLD AT LOTS 660-663 & 809)</p>	<p>175 LOT, (4) MARKED TOP INFEED TRANSFERS (TO RESAW) W/H78 CHAIN, ALL SHAFTS, SPROCKETS, RACES & SUPPORTS (NO DRIVE MOTORS)</p>
<p>168 TOSHIBA</p> <p>150 HP/1,160 RPM DRIVE MOTOR (IN BASEMENT)</p>	<p>176 SKK</p> <p>5 HP/68 RPM GEARHEAD MOTOR W/DRIVE CHAIN (DRIVE FOR LOT 175)</p>
<p>SALE MOVES TO 5' TWIN HORIZONTAL RESAW</p>	<p>177 SKK</p> <p>5 HP/56 RPM GEARHEAD MOTOR W/DRIVE CHAIN (DRIVE FOR LOT 175)</p>
<p>170 USNR/LETSON & BURPEE OHW-AS5</p> <p>5' TWIN HORIZONTAL RESAW, AIR STRAIN, (2) 150 HP/1,200 RPM SAW MOTORS, TOP FEED THRU CHAINS & PRESS ROLLS, MARKED CONTROLS & ELECTRICS (NEW WHEELS & STRAIN IN 2019, REBUILD LIST AVAILABLE UPON REQUEST. HYDRAULIC UNITS, OILER, PARTS & SAWS SOLD SEPARATELY) SERIAL NUMBER: 3916</p>	<p>178 HITACHI</p> <p>5 HP/60 RPM GEARHEAD MOTOR W/DRIVE CHAIN (DRIVE FOR LOT 175)</p>
<p>171 APPROX 28"X18' INFEED ROLLCASE W/(7) CHROMED</p> <p>ROLLS, APPROX 5' 4-STRAND SHARP CHAIN JUMP TRANSFER, SUPPORTS TO FLOOR</p>	<p>179 SKK</p> <p>3 HP/68 RPM GEARHEAD MOTOR W/DRIVE CHAIN (DRIVE FOR LOT 175)</p>
<p>172 SKK</p> <p>GEARHEAD MOTOR (NO DATA) W/DRIVE CHAIN (DRIVE FOR LOT 171)</p>	<p>180 SKK</p> <p>GEARHEAD MOTOR (NO DATA) W/DRIVE CHAIN (DRIVE FOR LOT 175)</p>
	<p>181 LOT, (3) MARKED FLOOR TRANSFERS (FROM RESAW)</p> <p>W/H78 CHAIN, ALL SHAFTS, SPROCKETS, PLATE (NO DRIVE MOTORS)</p>
	<p>182 SKK</p> <p>7-1/2 HP/30 RPM DOUBLE REDUCTION GEARHEAD MOTOR W/DRIVE CHAIN (DRIVE FOR LOT 181)</p>

HAMPTON LUMBER COMPANY - ONLINE AUCTION 5/29/2024-6/5/2024

LOT #	LOT #
183 SKK	194 SKK
5 HP/68 RPM GEARHEAD MOTOR W/DRIVE CHAIN (DRIVE FOR LOT 181)	5 HP (UNKNOWN RPM) GEARHEAD MOTOR W/DRIVE CHAIN (DRIVE FOR LOT 191)
185 APPROX 9' 7-STRAND LUMBER LANDING TABLE W/STEEL PLATE & MARKED SUPPORTS	SALE MOVES TO BOTH RESAW ELECTRICS
186 3 HP MOTOR TO REX MARS 44 RPM REDUCER W/DRIVE	198 LOT, ALLEN BRADLEY 5-SECTION MCC W/(11) SWITCHES, (2) ALLEN BRADLEY SMC PLUS 150 HP SOFT STARTS, 800 AMP MAIN & ALLEN BRADLEY 3-SECTION MCC W/(18) SWITCHES (FOR LOT 170 RESAW, NO WIRE OUTSIDE OF BOX)
CHAIN (DRIVE FOR LOT 185)	
187 APPROX 60"X14' MERRY GO ROUND BELT TRANSFER	199 LOT, YASKAWA F7 VARI SPEED DRIVE (FOR LOT 170 RESAW, NO WIRE OUTSIDE OF BOX)
188 SKK	200 ALLEN BRADLEY 1747-AENTR
7-1/2 HP/100 RPM GEARHEAD MOTOR W/DRIVE CHAIN (DRIVE FOR LOT 187)	PLC W/(3) INPUT & (4) OUTPUT MODULES, 2ND RACK W/(3) INPUT & (4) OUTPUT MODULES (FOR LOT 170 RESAW, NO WIRE OUTSIDE OF BOX)
190 KOCKUMS CANCAR	201 ALLEN BRADLEY CENTERLINE
6' TWIN HORIZONTAL RESAW, AIR STRAIN, (2) 250 HP/1,180 RPM SAW MOTORS, TOP FEED THRU CHAINS & PRESS ROLLS, MARKED CONTROLS & ELECTRICS (HYDRAULIC UNITS, OILER, PARTS & SAWS SOLD SEPARATELY)	6-SECTION MCC W/(31) SWITCHES & CUTLER HAMMER 600 AMP DISCONNECT (FOR LOT 190 RESAW, NO WIRE OUTSIDE OF BOX)
191 APPROX 24"X20' INFEED ROLLCASE W/(7) CHROMED	202 ALLEN BRADLEY SMC-FLEX
ROLLS, 30" 4-STRAND TRANSFER W/(4) CANT TURNERS, 6' 5-STRAND 81X INFEED TRANSFER, CATWALK & SUPPORTS TO FLOOR	300 HP @ 460V SOFT START (FOR LOT 190 RESAW, NO WIRE OUTSIDE OF BOX)
192 MARATHON	203 ALLEN BRADLEY SMC DIALOG PLUS
5 HP MOTOR TO SM CYCLO 15:1 RATIO REDUCER W/DRIVE CHAIN (DRIVE FOR LOT 191)	300 HP @ 460V SOFT START (FOR LOT 190 RESAW, NO WIRE OUTSIDE OF BOX)
193 SKK	204 YASKAWA V1000
5 HP (UNKNOWN RPM) DOUBLE REDUCTION GEARHEAD MOTOR W/DRIVE CHAIN (DRIVE FOR LOT 191)	VARIABLE FREQUENCY DRIVE (FOR LOT 190 RESAW, NO WIRE OUTSIDE OF BOX)
	205 ALLEN BRADLEY COMPACT LOGIX L33ER
	PLC W/(1) DC INPUT, (1) ANALOG INPUT, (3) AC INPUTS & (4) AC/DC OUTPUT MODULES (FOR LOT

HAMPTON LUMBER COMPANY - ONLINE AUCTION 5/29/2024-6/5/2024

LOT #	LOT #
190 RESAW, NO WIRE OUTSIDE OF BOX)	218 EVERCRAFT
206 LOT, (3) SONIC HEATERS IN THIS AREA	2 TON HYDRAULIC ENGINE HOIST
207 LOT, (2) SCEPTER APPROX 50" MONITORS W/DVR IN CABINET	219 PRESTO
SALE MOVES TO FILING ROOM	2,000 LB CAP LIFT CART
211 SIMONDS OPTIMATIC RMO940	220 MILLER SRH444
BANDSAW LEVELER SERIAL NUMBER: 98942347	400 AMP DC WELDER W/LEADS
212 ARMSTRONG #4	221 LOT, MARKED TRANSFORMER, LIGHTING PANELS, MARKED DISCONNECTS HEATERS & LIGHTING
RH BANDSAW SHARPENER W/DIGICAM & STRONG ARM	222 LOT, ASSORTED FILING ROOM SAW CLAMPS & ASSORTED PARTS
213 ARMSTRONG #4	223 LOT, MARKED STEEL CABINET & SHELVES W/CONTENTS
BANDSAW STRETCHER ROLL W/(2) ANVILS, STAND & CLAMP SERIAL NUMBER: 12187	224 LOT, ASSORTED BANDSAWS FOR 6' HEADRIG
214 ARMSTRONG #4	225 LOT, ASSORTED BANDSAWS FOR 6' TWIN RESAW
BANDSAW STRETCHER ROLL W/(3) ANVILS & STAND	226 LOT, ASSORTED BANDSAWS FOR 5' TWIN RESAW
215 ARMSTRONG #4	227 LOT, ASSORTED BANDSAWS FOR 5' TWIN RESAW
LH BANDSAW SHARPENER W/DIGICAM & STRONG ARM SERIAL NUMBER: 9075	SALE MOVES TO 6' RESAW OUTFEED AREA
216 HOE	231 APPROX 28"X10' OUTFEED ROLLCASE (FROM RESAW)
TRAVEL BED GUIDE GRINDER W/TABLE, VISE ON STAND, DOUBLE END GRINDER	W/(4) CHROMED ROLLS, SKK GEARHEAD MOTOR
217 BARNHARDT NO 54	232 APPROX 9' 6-STRAND LUMBER LANDING TABLE
WHEEL GRINDER W/5 HP POWERED HEAD, 1 HP FLEX HEAD, 36" BARREL	W/H-SHAFT, STEEL PLATE & SUPPORTS TO BASEMENT

HAMPTON LUMBER COMPANY - ONLINE AUCTION 5/29/2024-6/5/2024

LOT #	LOT #
<p>233 SKK</p> <p>5 HP/45 RPM GEARHEAD MOTOR W/DRIVE CHAIN (DRIVE FOR LOT 232)</p>	<p>241 LOT, IRREGULAR SHAPED SAWMILL BUILDING</p> <p>W/SUBSTRUCTURE & MILL FLOORS, ALL STAIRS & CATWALKS NOT SOLD SEPARATELY, ALL MAIN MILL LIGHTING ON BOTH FLOORS (NO WIRE OR CONDUIT. MACHINERY REMOVAL HAS PRIORITY OVER BUILDING REMOVAL. PLEASE CONSULT AUCTION SITE REP PRIOR TO BIDDING.)</p>
<p>234 LOT, APPROX 9' 5-STRAND LUMBER LANDING TABLE</p> <p>W/H-SHAFT, SKK GEARHEAD MOTOR, APPROX 72" EVEN END ROLLCASE W/SKK GEARHEAD MOTOR, APPROX 11' 8-STRAND H78 TRANSFER W/BOARD STOPS, H-SHAFT W/HYDRAULIC DRIVE, 5-ARM TIPPLE W/GATES (TO MERRY GO ROUND ROLLCASE)</p>	<p>242 LOT, MARKED UNSOLD STAIRS & CATWALK THROUGHOUT</p> <p>UPPER SAWMILL FLOOR (MACHINERY REMOVAL HAS PRIORITY OVER REMOVAL OF THIS LOT. PLEASE CONSULT AUCTION SITE REP PRIOR TO BIDDING)</p>
<p>235 LOT, (2) MARKED CONTROL PANELS, (8) DISCONNECTS,</p> <p>(2) HEATERS & (2) FANS</p>	<p>246 BORING MACHINE WORKS</p> <p>6"X48" GANG EDGER (CONVERTED FROM 4") W/#3 SPLINED ARBOR & SPARE, CHROMED FEED ROLLS, PRESS ROLLS, MARKED CONTROLS & ELECTRICS, CRANE RAIL (REBUILD LIST AVAILABLE UPON REQUEST. ALL HYDRAULIC UNITS, OILER, SPARE PARTS, SAWS & GUIDES SOLD SEPARATELY)</p>
<p>236 APPROX 60"X18' MERRY GO ROUND ROLLCASE W/SUPPORT FRAME</p>	<p>247 RELIANCE</p> <p>400 HP/1,800 RPM/505US FRAME ARBOR DRIVE MOTOR (DRIVE FOR LOT 246)</p>
<p>237 SKK</p> <p>3 HP/56 RPM GEARHEAD MOTOR W/DRIVE CHAIN (DRIVE FOR LOT 236)</p>	<p>248 SKK</p> <p>10 HP/45 RPM GEARHEAD MOTOR W/DRIVE CHAIN (DRIVE FOR LOT 246)</p>
<p>238 LOT, APPROX 30' 7-STRAND H132 FLOOR TRANSFER</p> <p>(FROM DROP OUT GATES), H-SHAFT, STEEL PLATE TO APPROX 43' 8-STRAND INCLINE TRANSFER (TO GANG)</p>	<p>249 APPROX 20' 4-ROLL TEMPOSONIC POSITIONED FEED</p> <p>TABLE W/SHARP CHAIN, FRAME & SUPPORTS TO FLOOR</p>
<p>239 SKK</p> <p>10 HP/37 RPM GEARHEAD MOTOR W/DRIVE CHAIN (DRIVE FOR LOT 238)</p>	<p>250 APPROX 20' 9-STRAND 81X INFEED TRANSFER, S-DRIVE,</p> <p>LUMBER STOPS, 3' 6-ARM TIPPLE</p>
<p>240 LOT, WIRE THROUGHOUT SAWMILL & PLANER MILLS</p> <p>STARTING AT DISCONNECT CREATED BY POWER COMPANY FROM THEIR TRANSFORMERS THROUGHOUT MILL SITE (DOES NOT INCLUDE ANY WIRE IN ANY ELECTRICAL ENCLOSURE OR INSIDE ANY MOTOR, OFFICE, LUNCHROOM, BATHROOMS, OR POWER TO FUEL TANKS. PLEASE CONSULT AUCTION SITE REP PRIOR TO BIDDING)</p>	

HAMPTON LUMBER COMPANY - ONLINE AUCTION 5/29/2024-6/5/2024

LOT #	LOT #
251 SKK	PARTS, SAWS & GUIDES SOLD SEPARATELY)
5 HP/56 RPM GEARHEAD MOTOR W/DRIVE CHAIN (DRIVE FOR LOT 250)	261 BALDOR/RELIANCE
252 SCAN STATION W/(6) JOE SCAN JS20DL SCAN HEADS W/FRAME & SUPPORTS TO FLOOR	250 HP/3,565 RPM/445TS FRAME ARBOR DRIVE MOTOR (DRIVE FOR LOT 260)
253 APPROX 42"X11' OUTFEED BELT, H&T DRUMS, STEEL TROUGH, SUPPORTS TO FLOOR	262 SKK
254 SKK	20 HP (UNKNOWN RPM) GEARHEAD MOTOR W/DRIVE CHAIN (DRIVE FOR LOT 260)
5 HP/56 RPM GEARHEAD MOTOR W/DRIVE CHAIN (DRIVE FOR LOT 253)	263 APPROX 36"X6' OUTFEED ROLLCASE W/EDGE PICKER
255 APPROX 42"X11' OUTFEED BELT, H&T DRUMS, STEEL TROUGH, SUPPORTS TO FLOOR	(DRIVEN OFF OF EDGER)
256 SKK	264 APPROX 30"X46' INFEED SCANNER BELT W/DRIVE
5 HP/56 RPM GEARHEAD MOTOR W/DRIVE CHAIN (DRIVE FOR LOT 255)	265 SCAN STATION W/(2) JOE SCAN JS20DL SCAN HEADS W/HOUSING
257 ALLEN BRADLEY LOGIX 5571	266 APPROX 30"X16' POWERED FEED TABLE W/(6) CHROMED KNURLED ROLLS, HOLD DOWN ROLL, 5' 5-STRAND H78 INFEED TRANSFER, 5-ARM TIPPLE
PLC W/(2) AC INPUT, (1) DC OUTPUT, (3) AC OUTPUT & (1) DC OUTPUT MODULES (NO WIRE OUTSIDE OF BOX)	267 SKK
258 LOT, MARKED DISCONNECTS, FANS, CONTROL PANELS, HOSE REELS & MONITORS IN THIS AREA	5 HP/230 RPM GEARHEAD MOTOR W/DRIVE CHAIN (DRIVE FOR LOT 266)
259 TOSHIBA	268 LOT, APPROX 14' 14-STRAND UNSCRAMBLER W/FRAME
400 HP/1,765 RPM/460V MOTOR (SPARE FOR GANG)	WORK
SALE MOVES TO BOARD EDGER	269 SKK
260 2004 TMT	10 HP/UNKNOWN RPM GEARHEAD MOTOR W/DRIVE CHAIN (DRIVE FOR LOT 268)
2"X42" 5-SAW LINEAL BOARD EDGER W/#4 SPLINED ARBOR, (5) 19" TEMPOSONIC POSITIONED SAWS, CHROMED & KNURLED FEED THRU ROLLS, PRESS ROLLS (ALL HYDRAULIC UNITS, OILER, SPARE	270 LOT, 36" EVEN END ROLLCASE TO 5' 6-STRAND 81X TRANSFER W/(2) SKK GEARHEAD MOTORS, SUPPORTS TO FLOOR

HAMPTON LUMBER COMPANY - ONLINE AUCTION 5/29/2024-6/5/2024

LOT #	LOT #
SALE MOVES TO CONTROL ROOM	
271 ALLEN BRADLEY COMPACT LOGIX L32E	282 ARMSTRONG #4
PLC W/(10) ASSORTED CARDS (FOR LOT 252, NO WIRE OUTSIDE OF BOX)	BANDSAW STRETCHER ROLL W/(2) ANVILS & STAND (NO PLATE)
272 ALLEN BRADLEY LOGIX 5561	283 IMW 240SS
PLC W/(19) ASSORTED CARDS (FOR LOT 265, NO WIRE OUTSIDE OF BOX)	EDGER GUIDE DRESSER W/STAND
273 LOT, ALLEN BRADLEY PANELVIEW PLUS 1000	284 IMW 240
TOUCHSCREEN & MARKED CONTROLS IN THIS AREA (NO WIRE OUTSIDE OF BOX)	EDGER GUIDE DRESSER
274 SQUARE D 6	285 LOT, EDGER GUIDES (FITS GANG EDGER)
6-SECTION MCC W/(35) SWITCHES, 600 AMP/660V DISCONNECT, YASKAWA V1000 DRIVE (FOR LOT 260, NO WIRE OUTSIDE OF BOX)	286 LOT, EDGER GUIDES (FITS BOARD EDGER)
275 WESTINGHOUSE SERIES 2100	287 LOT, ASSORTED BABBIT IN THIS AREA
2-SECTION MAIN (NO ID PLATE)	288 LOT, ASSORTED GRINDING WHEELS
276 LOT, VFD CABINET W/(3) SAFTRONICS GP10 20 HP	289 WAAGE
VECTOR DRIVES, (2) SAFTRONICS GP10 10 HP VECTOR DRIVES, (1) FRENIC-MEGA 5 HP DRIVE W/(3) SAFTRONICS BRAKES	BABBIT POT W/HOOD & MARKED ELECTRICS
SALE MOVES TO GRINDING ROOM	
280 WRIGHT W1904-P	290 EDGER GUIDE PRESS ON STAND (FOR GANG EDGER)
BANDSAW LEVELER SERIAL NUMBER: 12130W1904-P	291 EDGER GUIDE PRESS (FOR BOARD EDGER)
281 ARMSTRONG #4	292 HOE STYLE
RH BANDSAW SHARPENER W/DIGICAM & STRONGARM ATTACHMENTS SERIAL NUMBER: 5179	GUIDE GRINDER W/GUIDE MATERIAL IN THIS AREA
	293 LOT, ASSORTED TOOLS & SUPPLIES IN THIS AREA
	294 KEY KNIFE GRINDER
	295 OREGON
	CHAIN SHARPENER W/ASSORTED CHAIN
	296 ACME
	CIRCLE SAW SHARPENER

HAMPTON LUMBER COMPANY - ONLINE AUCTION 5/29/2024-6/5/2024

LOT #	LOT #
297 LOT, LOOSE CONTENTS OF THIS ROOM	312 APPROX 7' 6-STRAND LUMBER LANDING TABLE
298 LOT, (1) APPROX 3-3/4X18" & (1) APPROX 3"X18" ROUND SAW ANVILS W/LIGHT BENCH, BENCH W/ANVIL & COLLAR	W/H-SHAFT, STEEL PLATE & SUPPORTS TO FLOOR W/SKK GEARHEAD MOTOR
299 LOT, (8) BANDSAWS (FITS HEADRIG)	313 APPROX 17' 7-STRAND 81X INCLINE TRANSFER W/42" EVEN END ROLLCASE, H-SHAFT (NO T-SHAFT), (7) 42" ROLLS, SUPPORTS TO FLOOR, SKK GEARHEAD MOTOR
300 LOT, APPROX 20" SPLINED GANG EDGER SAWS	314 APPROX 10' POWERED ROLLCASE W/(7) 32" ROLLS, SUPPORTS TO FLOOR, SKK GEARHEAD MOTOR
301 LOT, APPROX 20" SPLINED GANG EDGER SAWS	315 R&M 3-TON UNDERSLUNG CABLE OPERATED CRANE W/REMOTE, BRIDGE & SUPPORTS
302 LOT, APPROX 19" SPLINED GANG EDGER SAWS	316 APPROX 35"X21' SLANTED BELT TRANSFER, H&T DRUMS, STEEL SUPPORTS TO FLOOR
303 LOT, APPROX 19" SPLINED GANG EDGER SAWS	317 SKK 5 HP/230 RPM GEARHEAD MOTOR W/DRIVE CHAIN (DRIVE FOR LOT 316)
304 LOT, ASSORTED ITEMS W/STEEL LOCKER & MARKED ITEMS ALONG WALL	318 APPROX 32' 6-STRAND H78 TRANSFER, H-SHAFT, STEEL PLATE, SUPPORTS TO FLOOR & 7' 6-STRAND BELT TIPPLE
305 WESTINGHOUSE SERIES 2100 2-SECTION MAIN, 600 AMPS (NO WIRE OUTSIDE OF BOX)	319 SKK 7-1/2 HP/25 RPM DOUBLE REDUCTION GEARHEAD MOTOR W/DRIVE CHAIN (DRIVE FOR LOT 318)
306 WESTINGHOUSE SERIES 2100 3-SECTION MCC W/(14) SWITCHES (NO WIRE OUTSIDE OF BOX)	320 LOT, APPROX 7' 6-STRAND LUMBER LANDING TABLE (NO DRIVE MOTOR) TO APPROX. 19' 7-STRAND FLOOR TRANSFER (NO DRIVE MOTOR) TO 6' 5-STRAND 81X TRANSFER (NO DRIVE MOTOR) TO 18' 6-STRAND H130 TRANSFER W/DRIVE MOTOR, ALL SHAFTS, SPROCKETS & STEEL PLATE (3 OF 4 DRIVES SOLD SEPARATELY)
307 LOT, MARKED TRANSFORMERS, DISCONNECTS, LIGHTING PANELS, HEATER, FANS & LIGHTING	
SALE MOVES BACK TO BOARD EDGER OUTFEED AREA	
311 LOT, (2) OUTFEED EDGER ROLLS W/SKK 3 HP/420 RPM GEARHEAD MOTOR	

HAMPTON LUMBER COMPANY - ONLINE AUCTION 5/29/2024-6/5/2024

LOT #	LOT #
321 SKK 5 HP/45 RPM GEARHEAD MOTOR W/DRIVE CHAIN (DRIVE FOR LOT 320)	THRU TRANSFER, APPROX 10' 9-STRAND INFEED TRANSFER, BELT CLEAN OUT CONVEYOR, READER BOARD, MARKED CONTROLS & ELECTRICS
322 SKK 5 HP/45 RPM GEARHEAD MOTOR W/DRIVE CHAIN (DRIVE FOR LOT 320)	331 2020 RAPTOR FX85 INTEGRATION 20' LH SAWMILL TRIMMER OPTIMIZER W/WEBSORT SYSTEM & CONTROL LOGIX UPGRADE, LMI CHROMA SCAN SENSOR HUB, (22) RAPTOR LMI GOCATOR G230 SENSORS, 9' 7-STRAND 81X LUGGED FEED THRU TRANSFER, MARKED COMPUTERS, MONITORS & CONTROLS
323 SKK 5 HP/45 RPM GEARHEAD MOTOR W/DRIVE CHAIN (DRIVE FOR LOT 320)	332 PLC STYLE LUG LOADER W/6' 6-STRAND INFEED TRANSFER TO LUG LOADER W/6' 5-STRAND 81X LUGGED TRANSFER W/(6) 42" EVEN END ROLLS, SUPPORTS TO FLOOR
SALE MOVES TO RESAW OUTFEED AREA	333 EVEN END ROLLCASE W/(6) 52" ROLLS, APPROX 9' 7-STRAND 81X OUTFEED TRANSFER, SUPPORTS TO FLOOR
324 LOT, 6' 6-STRAND LUMBER LANDING TABLE TO APPROX 15' 8-STRAND INCLINE TRANSFER, ALL SHAFTS, PLATE & SUPPORTS W/DRIVES	334 SQUARE D 6 6-SECTION MCC W/(35) SWITCHES (NO WIRE OUTSIDE OF BOX)
325 LOT, (2) TV SCREENS & MARKED ELECTRICS IN THIS AREA	335 FRENIC-MEGA 75 HP TRIMMER VFD (NO WIRE OUTSIDE OF BOX)
SALE MOVES TO TRIMMER INFEED	336 LOT, (1) FRENIC-MEGA 7-1/2 HP & (2) TOSHIBA TOSVERT-130 DRIVES (NO WIRE OUTSIDE OF BOX)
326 APPROX 10' 10-STRAND UNSCRAMBLER W/SUPPORTS	337 LOT, MARKED CONTROL PANEL W/(2) TV SCREENS, CAMERA, (2) FANS, FLAMMABLES CABINET
327 SKK 7-1/2 HP/68 RPM GEARHEAD MOTOR W/DRIVE CHAIN (DRIVE FOR LOT 326)	338 ALLEN BRADLEY LOGIX 5581E PLC W/(1) 2-AXIS SERVO/SSI, (2) ETHERNET IP, (1) COUNTER, (1) ADAPTOR, (3) INPUT & (4) OUTPUT MODULES
328 APPROX 10' 10-STRAND UNSCRAMBLER W/SUPPORTS	
329 SKK 7-1/2 HP/68 RPM GEARHEAD MOTOR W/DRIVE CHAIN (DRIVE FOR LOT 328)	
330 2001 PHL 20' LH SAWMILL TRIMMER W/2-STAGE FENCE, (11) 18" INDIVIDUALLY MOTORIZED SAWS W/ZERO SAW, APPROX 9' 11-STRAND 81X LUGGED FEED	

HAMPTON LUMBER COMPANY - ONLINE AUCTION 5/29/2024-6/5/2024

LOT #	LOT #
339 APPROX 24"X50' DROP OUT BELT CONVEYOR (FROM TIPPLE) W/DRIVE	349 APPROX 24"X30' CLEAN OUT BELT CONVEYOR, H&T DRUMS, STEEL TROUGH
340 APPROX 28' 9-STRAND 81X W/LUGS OUTFEED TRANSFER, (9) 15' EVEN END ROLLS, SUPPORTS TO FLOOR, SPARE MOTOR & LOOSE HOSE REEL	350 SKK DOUBLE REDUCTION GEARHEAD MOTOR (NO DATA) W/DRIVE CHAIN (DRIVE FOR LOT 349)
341 APPROX 24' 9-STRAND PUSH LUG DECLINE TRANSFER, H&T SHAFTS & VALVES (TRAY SORTER INFEED)	351 LINCOLN IDEALARC R3R-500 DC WELDER W/ATTACHED LEADS
342 TECO 30 HP MOTOR TO 2022 SM CYCLO 29.1 RATIO REDUCER W/DRIVE CHAIN (DRIVE FOR LOT 341)	352 LSI 20' RH MECHANICAL SAWMILL STACKER W/60" 6-ARM LOWERING HOIST, (7) LUMBER PLACING ARMS, APPROX. 20' 2-SECTION 5-STRAND INFEED TRANSFER W/EVEN END CHAIN, APPROX 15' 12-STRAND INFEED UNSCRAMBLER, DRIVE, MARKED CONTROLS & ELECTRICS
343 LOT, 20' 5-TRAY SORTER W/BYPASS TRANSFER, BOX TUBE FRAME, MARKED CONTROLS & ELECTRICS	353 ALLEN BRADLEY CENTERLINE 5-SECTION MCC W/(17) SWITCHES (NO WIRE OUTSIDE OF BOX)
344 SKK 5 HP/45 RPM GEARHEAD MOTOR W/DRIVE CHAIN (DRIVE FOR LOT 343)	354 KOYO DIRECT LOGIC 205 PLC W/(1) DL240 CPU, (4) INFEED & (4) OUTFEED MODULES (NO WIRE OUTSIDE OF BOX)
345 SKK 5 HP/45 RPM GEARHEAD MOTOR W/DRIVE CHAIN (DRIVE FOR LOT 343)	355 SAFTRONICS GP10 10 HP VECTOR DRIVE (NO WIRE OUTSIDE OF BOX)
346 SKK 5 HP/45 RPM GEARHEAD MOTOR W/DRIVE CHAIN (DRIVE FOR LOT 343)	SALE MOVES OUTSIDE TO ROLLCASE AREA
347 SKK 5 HP/45 RPM GEARHEAD MOTOR W/DRIVE CHAIN (DRIVE FOR LOT 343)	356 LOT, APPROX 60' POWERED OUTFEED ROLLCASE W/(21) 60" ROLLS, MOTOR TO REDUCER DRIVE, 24' 5-STRAND OUTFEED TRANSFER W/S-DRIVE, AIR BAGS & SUPPORTS
348 SKK 5 HP/45 RPM GEARHEAD MOTOR W/DRIVE CHAIN (DRIVE FOR LOT 343)	357 SKK 10 HP/30 RPM GEARHEAD MOTOR W/DRIVE CHAIN (DRIVE FOR LOT 356)

HAMPTON LUMBER COMPANY - ONLINE AUCTION 5/29/2024-6/5/2024

LOT #	LOT #
358 LOT, APPROX 36"X40' BELT TRANSFER (FROM STACKER) W/(16) POWERED ROLLS, SKK GEARHEAD MOTOR, CATWALK & SUPPORTS	367 SKK 5 HP/56 RPM GEARHEAD MOTOR W/DRIVE CHAIN (DRIVE FOR LOT 366)
359 APPROX 36"X88' BELT TRANSFER (TO PLANER), H&T DRUMS, STEEL TROUGH, CATWALK & SUPPORTS	368 APPROX 56' 6"X12" BOX CHAIN W/FLITES (FROM #3 CHIPPER), H&T DRUMS, UHMW LINED TROUGH (NO SUPPORTS)
360 SKK 10 HP/84 RPM GEARHEAD MOTOR W/DRIVE CHAIN (DRIVE FOR LOT 359)	369 SKK 5 HP/45 RPM GEARHEAD MOTOR W/DRIVE CHAIN (DRIVE FOR LOT 368)
361 PRECISION 58-15 6-KNIFE SAWMILL CHIPPER #3 W/KEY KNIFE CONVERSION, HORIZONTAL INFEED, BOTTOM DISCHARGE, BUILDING & SUBSTRUCTURE (SPARE PARTS SOLD SEPARATELY) SERIAL NUMBER: C3201	370 PRECISION 58-15 6-KNIFE CHIPPER W/KEY KNIFE CONVERSION, HORIZONTAL INFEED, TOP DISCHARGE, BLOWPIPE TO SURGE BIN (SPARE PARTS SOLD SEPARATELY) SERIAL NUMBER: C1117
362 TOSHIBA 150 HP/1,165 RPM/445TZ FRAME MOTOR (NO WIRE OUTSIDE OF BOX)	371 TECO 250 HP/1,785 RPM MOTOR (NO WIRE OUTSIDE OF BOX)
363 ACTION APPROX 18"X40' VIBRATORY CONVEYOR (TO #3 CHIPPER), 4' FIBERGLASS TUB W/RENS L240 METAL DETECTOR SERIAL NUMBER: 1635-1	372 MILLPOWER APPROX 18"X40' VIBRATORY CONVEYOR W/4' FIBERGLASS TUB, RENS L240 METAL DETECTOR, 15' FINES DROP OUT (#2 CHIPPER INFEED) SERIAL NUMBER: 83069
364 VIBRA PRO LS90600FS-3/16(MS)60F 5 HP/400 RPM, 78" STROKE, SLOPE SHEETING (#3 CHIPPER AREA) SERIAL NUMBER: 2347	373 ACTION APPROX 24"X60' VIBRATORY CONVEYOR (TO LOT 372)
365 APPROX 32' 9-STRAND TRIMMER STRIP DECK (TO #2 CHIPPER) W/DRIVE	374 APPROX 35' 6"X11" BOX CHAIN CLEAN OUT CONVEYOR W/H&T SPROCKETS & STEEL TROUGH
366 APPROX 32' 6"X12" BOX CHAIN W/FLITES CONVEYOR, H&T DRUMS, STEEL TROUGH & SUPPORTS	375 SKK 5 HP/84 RPM GEARHEAD MOTOR W/DRIVE CHAIN (DRIVE FOR LOT 374)

HAMPTON LUMBER COMPANY - ONLINE AUCTION 5/29/2024-6/5/2024

LOT #	LOT #
376 APPROX 12''X20' BELT CONVEYOR (FROM SCREEN)	386 SKK
	7-1/2 HP/45 RPM GEARHEAD MOTOR W/DRIVE CHAIN (DRIVE FOR LOT 385)
377 SKK	
5 HP/84 RPM GEARHEAD MOTOR W/DRIVE CHAIN (DRIVE FOR LOT 376)	387 APPROX 42' 6''X12" BOX CHAIN CONVEYOR TO SURGE BIN, H&T SPROCKETS, STEEL TROUGH & SUPPORT FRAME
378 LOT, PARTIAL BELT CONVEYOR (NO BELT), (16) APPROX 60" ROLLS W/(2) DRIVES	
	388 SKK
379 GE SPECTRA SERIES	GEARHEAD MOTOR (NO DATA) W/DRIVE CHAIN (DRIVE FOR LOT 387)
2,000 AMP 2-SECTION MAIN W/(1) 800 AMP, (2) 600 AMP, (1) 400 AMP & (2) 90 AMP BREAKERS, 480/277V (NO WIRE OUTSIDE OF BOX)	
380 ALLEN BRADLEY	389 WSM 60HD
5-SECTION MCC W/(25) SWITCHES & BUILDING (NO WIRE OUTSIDE OF BOX)	6'X10' 3-DECK CHIP SCREEN, SPARE SCREENS, SUPPORTS
381 ALLEN BRADLEY	
2-SECTION MCC W/(11) SWITCHES (NO WIRE OUTSIDE OF BOX)	390 CLARKES ER-20X30
382 BENSRAW	FEEDER, 24"X30" W/MOTOR TO SHAFT MOUNTED REDUCER SERIAL NUMBER: 202205
RX2E-250-480-12-KP 250 HP SOFT START (#3 CHIPPER, NO WIRE OUTSIDE OF BOX)	
383 SIEMENS SIKO START 3RW34	391 LOT, 8" DIA HIGH PRESSURE BLOWPIPE W/FLATBACK & SUPPORTS TO MILL WALL
200 HP SOFT START (#2 CHIPPER, NO WIRE OUTSIDE OF BOX)	
384 LOT, MARKED ELECTRICS IN THIS ROOM (NO WIRE OUTSIDE OF BOX)	392 2019 WESTERN PNEUMATICS 1024-5111
	HIGH PRESSURE ROTARY LOBE BLOWER W/TECO 100 HP/1,780 RPM/404T FRAME MOTOR, S/N: A78922, UNIVERSAL SILENCER RD-10, S/N: 72-417, PIPING TO FEEDER
385 APPROX 9'W X 9'L X 12'H DUAL SCREW LIVE BOTTOM AUGER W/MARKED STEEL SUPPORT & CATWALK	
	393 APPROX 36' 6''X12" BOX CHAIN (FROM SCREEN), H&T SPROCKETS & STEEL TROUGH
	394 SKK
	10 HP/100 RPM GEARHEAD MOTOR W/DRIVE CHAIN (DRIVE FOR LOT 393)

HAMPTON LUMBER COMPANY - ONLINE AUCTION 5/29/2024-6/5/2024

LOT #	LOT #
395 PRECISION 58-15	402 APPROX 48" PLANER BLOWER W/TOSHIBA
6-KNIFE CHIPPER W/KEY KNIFE CONVERSION, HORIZONTAL INFEED, BOTTOM DISCHARGE W/BUILDING (SPARE PARTS SOLD SEPARATELY) SERIAL NUMBER: C3406	125 HP/885 RPM/505UZ FRAME MOTOR W/STEEL SUPPORTS
396 TECO	403 LOT, APPROX 30" BLOWPIPE (FROM
150 HP/1,181 RPM/445T FRAME MOTOR (NO WIRE OUTSIDE OF BOX)	BLOWER TO CYCLONE) W/CLARKES PYROGUARD CXC-2 2-ZONE SPARK DETECTOR (LOCATED BEHIND PLANER)
397 ACTION EQUIPMENT	404 USMW
APPROX 18"X140' VIBRATORY CONVEYOR W/4' FIBERGLASS TUB, RENS L240 METAL DETECTOR, 15' FINES DROP OUT, 445 RPM, 7/8" STROKE, NON-BALANCED (#1 CHIPPER INFEED) SERIAL NUMBER: 1802-1	APPROX 40-UNIT HYDRAULIC OPERATED SHAVINGS BIN, MARKED CATWALK & 15 HP HYDRAULIC UNIT, UNUSED GATES
398 APPROX 28' 6"X12" BOX CHAIN W/FLITES	405 NEW IN 2020
CONVEYOR	APPROX 10 DIA CYCLONE W/STAND (NO PIPING)
(FROM CHIPPER), H&T DRUMS, STEEL TROUGH	406 LOT, (2) APPROX 30-UNIT HYDRAULIC
399 SKK	OPERATED CHIP
5 HP/45 RPM GEARHEAD MOTOR W/DRIVE CHAIN (DRIVE FOR LOT 398)	BINS W/CROSS TOP AUGER, DRIVE MOTOR, MARKED CATWALK & STAIRS
400A APPROX 14"X70' CLEAN OUT BELT (FROM	407 LOT, (2) APPROX 30-UNIT HYDRAULIC
PLANER), H&T	OPERATED CHIP
DRUMS, STEEL TROUGH & SUPPORTS	BINS W/CROSS TOP AUGER, DRIVE MOTOR, MARKED CATWALK, STAIRS & PIPING TO ROOF
400B SKK	408 LOT, APPROX 90' 6"X12" BOX CHAIN
3 HP/25 RPM GEARHEAD MOTOR W/DRIVE CHAIN (DRIVE FOR LOT 400A)	W/FLITES
401A APPROX 23"X30" CLEAN OUT BELT	(TO LOT
CONVEYOR (FROM	406) W/DRIVE & APPROX 15' 6"X12" BOX CHAIN W/FLITES (TO LOT 408) W/DRIVE
PLANER), H&T DRUMS, STEEL TROUGH	SALE MOVES UNDER SAWMILL
401B SKK	409 60 HP SELF-CONTAINED HYDRAULIC UNIT
3 HP/45 RPM GEARHEAD MOTOR W/DRIVE CHAIN (DRIVE FOR LOT 401A)	W/AIR COOLER, ACCUMULATOR & FILTER (FITS BOARD EDGER), TANK IS EMPTY
	410 50 HP SELF-CONTAINED HYDRAULIC UNIT
	W/AIR COOLER & FILTERS (FITS GANG EDGER), TANK IS EMPTY

HAMPTON LUMBER COMPANY - ONLINE AUCTION 5/29/2024-6/5/2024

LOT #	LOT #
411 SAWGUIDE OILER W/(2) 1 HP PUMPS (FITS GANG), TANK IS EMPTY	420 SAFTRONICS AS6-360 250 HP SOFT START (FOR BOARD EDGER, NO WIRE OUTSIDE OF BOX)
412 SCHURMAN SAWGUIDE OILER W/(2) 1 HP PUMPS (FITS BOARD EDGER), TANK IS EMPTY	421 SAFTRONICS AS6-180 150 HP SOFT START (FOR HEADRIG, NO WIRE OUTSIDE OF BOX)
413 APPROX 18"X20' BELT CONVEYOR, H&T DRUMS, STEEL TROUGH W/DRIVE	422 LOT, (2) TRANSFORMERS, (2) LIGHTING PANELS & (3) DISCONNECTS W/LIGHTING & FAN (NO WIRE OUTSIDE OF BOX)
414 APPROX 30' 6"X12" BOX CHAIN CONVEYOR, S-DRIVE, UHMW LINED STEEL TROUGH W/DRIVE	423 LINCOLN IDEALARC DC-400 WELDER
415 LOT, (2) APPROX 20' 10-STRAND H78 FLOOR TRANSFERS W/DRIVE	SALE MOVES THROUGH BACK DOOR
SALE MOVES TO MCC 100 ROOM BY COMPRESSORS	424 1996 BRUNNER APPROX 4'X10' AIR RECEIVER (NO PIPING)
416 SQUARE D 2,000 AMP 4-SECTION MAIN W/POWER PACT RJ 2,000 AMP BREAKER, (1) 800 AMP, (5) 600 AMP & (1) 70 AMP BREAKERS, 480/277V (#2 PDC, NO WIRE OUTSIDE OF BOX)	425 5 HP HYDRAULIC UNIT (FOR CARRIAGE CABLE) W/(2) ACCUMULATORS, TANK IS EMPTY
417 SQUARE D 2,000 AMP 4-SECTION MAIN W/(1) 800 AMP, (4) 600 AMP, (1) 350 AMP, (2) 300 AMP, (2) 200 AMP & (1) 20 AMP BREAKERS, 480/277V (#2 PDC, NO WIRE OUTSIDE OF BOX)	426 LOT, (1) APPROX 3'X6' & (1) 3'X8' AIR RECEIVER TANKS (NO PIPING)
418 SQUARE D 6 4-SECTION MCC W/(14) SWITCHES (NO WIRE OUTSIDE OF BOX)	427 30 HP HYDRAULIC UNIT (FOR LOG TURNER) W/AIR COOLER & FILTERS, TANK IS EMPTY
419 SAFTRONICS AS6-360 250 HP SOFT START (FOR #1 CHIPPER, NO WIRE OUTSIDE OF BOX)	SALE MOVES TO COMPRESSOR AREA
	428 2004 QNW 751-D ROTARY SCREW COMPRESSOR W/150 HP MOTOR, AIR COOLED, ATTACHED STARTER, MARKED PIPING & VALVE, HOUR METER READS: 17,000 SERIAL NUMBER: 040305

HAMPTON LUMBER COMPANY - ONLINE AUCTION 5/29/2024-6/5/2024

LOT #	LOT #
429 1994 QNW 751-B	440 LOT, ASSORTED CONDUIT IN THIS AREA
ROTARY SCREW COMPRESSOR W/150 HP MOTOR, AIR COOLED, ATTACHED STARTER, MARKED PIPING & VALVE, HOUR METER READS: 78,000 SERIAL NUMBER: 940544	SALE MOVES UNDER SAWMILL BY HEADRIG DRIVE MOTOR
430 AIR POWER PRODUCTS AP-2000-HBP	441 APPROX 80' 6"X12" BOX CHAIN CLEAN OUT CONVEYOR
TWIN TOWER BLOWER PURGE REGENERATIVE AIR DRYER, 2,000 CFM AT 100 PSI, MARKED PIPING SERIAL NUMBER: AP-2000-HBP01-081	W/S-DRIVE
431 LOT, (1) TRANSFORMER & (2) 400 AMP/600V	442 SKK
DISCONNECTS (NO WIRE OUTSIDE OF BOX)	5 HP/45 RPM GEARHEAD MOTOR W/DRIVE CHAIN (DRIVE FOR LOT 441)
432 LOT, WIRE REELS W/THIS STEEL SHELF	443 APPROX 20' 6"X12" BOX CHAIN CLEAN OUT CONVEYOR
433 LOT, WIRE REELS W/THIS STEEL SHELF	(TO VIBRATORY CONVEYOR), H&T SPROCKETS & STEEL TROUGH
434 LOT, WIRE REELS W/THIS STEEL SHELF	444 SKK
435 LOT, WIRE REELS W/THIS STEEL SHELF	3 HP/45 RPM GEARHEAD MOTOR W/DRIVE CHAIN (DRIVE FOR LOT 443)
436 LOT, ASSORTED WIRE IN THIS AREA	445 APPROX 20' 6"X12" BOX CHAIN CLEAN OUT CONVEYOR
437 LOT, ASSORTED LIGHTING W/THIS STEEL SHELF	(TO VIBRATORY CONVEYOR), H&T SPROCKETS & STEEL TROUGH
438 LOT, ASSORTED BREAKERS, DISCONNECTS & ASSORTED	446 SKK
ELECTRICS W/THIS STEEL SHELF	3 HP/45 RPM GEARHEAD MOTOR W/DRIVE CHAIN (DRIVE FOR LOT 445)
439 2022 GORBEL	447 100 HP DUAL PUMP SELF-CONTAINED HYDRAULIC UNIT
4,000 LB CAP FREE STANDING BRIDGE CRANE W/HARRINGTON 2-TON CHAIN HOIST & PENDANT CONTROLS, APPROX 15'W BRIDGE, APPROX 34' TRAVEL, APPROX 14'6" OVERALL HEIGHT	(FOR 5' RESAW) W/AIR COOLER & ACCUMULATOR, TANK IS EMPTY
SALE MOVES AROUND CORNER TO HEADRIG DRIVE AREA, THROUGH SLIDERS	448 USNR
	LUBE UNIT (FOR 5' RESAW), TANK IS EMPTY

HAMPTON LUMBER COMPANY - ONLINE AUCTION 5/29/2024-6/5/2024

LOT #	LOT #
475 STETSON ROSS 6-12MA-1	485 TDS
PLANER MATCHER, 8"X15", (20) KNIVES, (6) HEADS, 100 HP TOP/50 HP BOTTOM & SIDE/25 HP SIDE, GENCO 40 HP DC FEED ROLL DRIVE W/GENSET, MURRAY/LATTA KEY KNIFE CONVERSION ON ALL HEADS, HYDRAULICS ON PRESS ROLLS, PLUNGE JOINTING RETROFIT, FRICTIONLESS JOINTER, PLANER SPIDER TO WALL, WOOD STRUCTURE W/MARKED WALKWAY & SUPPORTS, HOIST W/RAIL, (2) HOSE REELS & MARKED CONTROLS IN THIS AREA (SPARE PARTS SOLD AT LOTS 696-713)	IN LINE STAINLESS STEEL SPRAY TUNNEL W/BLOWER, APPROX 8'X8-1/2'X20' CONTAINER W/TDS SCREENING STATION W/ROSENDALE FILTERS, RECYCLE TANK & PUMP, (2) 500 GALLON POLY TANKS, (3) LMI PUMPS, ARROW SPEED CONTROLS
476 STETSON ROSS 505AE	486 APPROX 42"X96" PLANER SLOW DOWN BELT W/SKK 3 HP/155 RPM GEARHEAD MOTOR
20' HYDRAULIC DRIVEN TRIPLE PINEAPPLE FEED TABLE W/SPEED UP ROLL, (7) CHROMED & SPIRAL SMOOTH ROLLS W/APPROX 7' 8-STRAND H78 JUMP TRANSFER, COBRA TECH 3RD PINEAPPLE, HYDRAULIC DRIVES W/10 HP HYDRAULIC UNIT	487 APPROX 12' 8-STRAND LUMBER LANDING TABLE
477 STETSON ROSS 505AE	W/H-SHAFT, STEEL PLATE & SUPPORTS W/SKK GEARHEAD DRIVE MOTOR
13' HYDRAULIC DRIVEN LIVE BRIDGE W/(7) CHROMED SMOOTH ROLLS	488 1983 QNW 491A
478 APPROX 12"X8' PLANER OUTFEED BELT W/DRIVE"	ROTARY SCREW COMPRESSOR, 100 HP MOTOR, AIR COOLED, STARTER & DISCONNECT (NO PIPING), HOUR METER READS: 41,436
479 LOT, (2) 4" 14-KNIFE HEADS W/KEY KNIVES	489 ZEKS 730HPS10B001
480 LOT, (2) 3" 14-KNIFE HEADS W/KEY KNIVES	DUAL DESICCANT AIR DRYER, (2) IN LINE FILTERS & PIPING TO 1ST JOINT SERIAL NUMBER: 239183
481 LOT, (2) 2" 18-KNIFE HEADS W/KEY KNIVES	490 BRUNNER
482 STETSON ROSS NO 372	APPROX 4'X10' AIR RECEIVER TANK W/PIPING TO 1ST JOINT
TRAVEL BED KNIFE GRINDER	SALE MOVES UNDER INFEEED TO MCC ROOM BEHIND FEED TABLE
483 LOT, REMAINING UNSOLD CONTENTS OF THIS ROOM W/GRINDER & METAL CABINETS	491 APPROX 24"X30' CLEAN OUT CONVEYOR W/GEARHEAD
484 LOT, (4) MONITORS, MARKED CONTROL PANEL & (2) FANS IN THIS AREA	MOTOR, H&T DRUMS & STEEL TROUGH
	492 GE AV-LINE
	1,200 AMP 2-SECTION MAIN W/1,600 AMP POWER BREAKER (NO WIRE OUTSIDE OF BOX)

HAMPTON LUMBER COMPANY - ONLINE AUCTION 5/29/2024-6/5/2024

LOT #	LOT #
493 GE 8000 LINE	503 BAXLEY
13-SECTION MCC W/(50) SWITCHES (NO WIRE OUTSIDE OF BOX)	20' RH HIGH SPEED PLANER TRIMMER W/CUT-N-TWO, SWING GATE FENCE, (22) 18" INDIVIDUALLY MOTORIZED SAWS, APPROX 18' 11-STRAND FEED THRU TRANSFER W/(9) EVEN END ROLLS & (1) PRESS ROLL, 6'X20' LENGTH, 4" & 6" WIDTH & 2" THICKNESS CAPACITIES, CONTROLS, ELECTRICS
494 ALLEN BRADLEY LOGIX 5561	504 APPROX 24"X12' CLEAN OUT CONVEYOR (FROM TRIMMER), H&T DRUMS & STEEL TROUGH
PLC W/(1) ETHERNET/IP, (1) DC INPUT, (2) DC OUTPUT, (4) AC INPUT, (1) ANALOG OUTPUT, (1) RELAY OUTPUT & (3) AC OUTPUT MODULES (NO WIRE OUTSIDE OF BOX)	505 SKK
495 LOT, (3) FRENIC-MEGA & (3) SAFTRONICS GP10 DRIVES (NO WIRE OUTSIDE OF BOX)	5 HP/100 RPM GEARHEAD MOTOR W/DRIVE CHAIN (DRIVE FOR LOT 504)
496 LOT, SQUARE D 50 KVA TRANSFORMER W/(2) LIGHTING PANELS (NO WIRE OUTSIDE OF BOX)	506 APPROX 14"X32' CLEAN OUT BELT CONVEYOR, H&T DRUMS & STEEL TROUGH
497 SAFTRONICS GP10	507 SKK
25 HP DRIVE W/BRAKE (NO WIRE OUTSIDE OF BOX)	3 HP/37 RPM GEARHEAD MOTOR W/DRIVE CHAIN (DRIVE FOR LOT 506)
498 APPROX 18' 9-STRAND H78 TRANSFER W/30" EVEN END ROLLS W/DRIVE, PLATE & SUPPORTS	508 ORMEC
499 PLC STYLE	SD DRIVE W/CABINET (NO WIRE OUTSIDE OF BOX)
20' LUG LOADER W/(6) FEED THRU CHAINS, (10) CARRY OVER WHEELS, BOARD HOOKS & SUPPORTS TO FLOOR	509 LOT, ALLEN BRADLEY COMPACT LOGIX 1756-L81E PLC W/(1) ETHERNET/IP, (2) PROSOFT ETHERNET, (1) 1756-EN2TR, (2) ANALOG INPUT, (1) ANALOG OUTPUT, (2) AXIS SERVO, (1) DC OUTPUT, (1) AC OUTPUT, (3) AC INPUT & (1) DC OUTPUT MODULES, 2ND RACK W/(2) ETHERNET/IP, (2) AC INPUT & (7) AC OUTPUT MODULES, (1) STRATIX 5700 HUB W/MARKED COMPUTERS, MONITORS & ELECTRICS IN THIS ROOM (NO WIRE OUTSIDE OF BOX)
500 APPROX 20' 6-STRAND 81X CHAIN W/LUGS, GRADING	510 SQUARE D 6
AREA TRANSFER W/H-SHAFT & SUPPORTS TO FLOOR	6-SECTION MCC W/(43) SWITCHES (NO WIRE OUTSIDE OF BOX)
501 LUCIDYNE MARK 5	
GRADE MARK READER	
502 LOT, LASER LIGHT W/MARKED LIGHTING, MONITORS & FANS IN THIS AREA	

HAMPTON LUMBER COMPANY - ONLINE AUCTION 5/29/2024-6/5/2024

LOT #	LOT #
511 LOT, (3) SAFTRONICS GP10, (2) YASKAWA V1000 & (1) FRENIC-MEGA DRIVES (NO WIRE OUTSIDE OF BOX)	522 LUMBER PULL CART
512 LOT, 2-DOOR STEEL CABINET W/LUMBER GRADING SUPPLIES	523 LUMBER PULL CART
SALE MOVES TO TRIMMER OUTFEED AREA	524 LUMBER PULL CART
513 APPROX 24"X40' CLEAN OUT CONVEYOR (FROM TRIMMER), H&T DRUMS & STEEL TROUGH	525 LUMBER PULL CART
514 SKK 5 HP/100 RPM GEARHEAD MOTOR W/DRIVE CHAIN (DRIVE FOR LOT 513)	526 LUMBER PULL CART
515 APPROX 6' 7-STRAND LUMBER LANDING TABLE W/H-SHAFT, STEEL PLATE & SUPPORTS	527 LUMBER PULL CART
516 3 HP MOTOR TO SM CYCLO 51:1 RATIO REDUCER W/DRIVE CHAIN (DRIVE FOR LOT 515)	528 LUMBER PULL CART
517 APPROX 42' 4-STRAND 81X PULL CHAIN W/H-SHAFT & SUPPORTS TO GROUND	529 LUMBER PULL CART
518 SKK 5 HP/30 RPM GEARHEAD MOTOR W/DRIVE CHAIN (DRIVE FOR LOT 517)	530 LUMBER PULL CART
519 LUMBER PULL CART	531 LUMBER PULL CART
520 LUMBER PULL CART	532 LUMBER PULL CART
521 LUMBER PULL CART	533 LUMBER PULL CART
	534 LUMBER PULL CART
	535 LUMBER STACKING FRAME
	536 STICKER RACK W/BUNKS
	537 STICKER RACK W/BUNKS
	538 STICKER RACK W/BUNKS
	539 STICKER RACK
	540 STEEL RACK W/BUNKS
	541 APPROX 98"-136" H X 30' W X 50' L ALL STEEL BUILDING
	542 UNIT STACKING RACK W/3/4" X 97" X 121" STEEL BASE

HAMPTON LUMBER COMPANY - ONLINE AUCTION 5/29/2024-6/5/2024

LOT #	LOT #
<p>543 LOT, IRREGULAR SHAPED ALL STEEL CLEAR SPAN PLANER MILL BUILDING, ALL MAIN MILL LIGHTING, AIR & WATER LINES NOT PREVIOUSLY SOLD (MACHINERY REMOVAL HAS PRIORITY OVER BUILDING REMOVAL. PLEASE CONSULT AUCTION SITE REP PRIOR TO BIDDING)</p>	<p>551 LOT, (3) SCAN MEG SCANNERS ON SORTER INFEED</p>
<p>544 APPROX 10'-14'H X 35'W X 60'L ALL STEEL CLEAR SPAN BUILDING OVER SORTER INFEED (MACHINERY REMOVAL HAS PRIORITY OVER BUILDING REMOVAL. PLEASE CONSULT AUCTION SITE REP PRIOR TO BIDDING)</p>	<p>552 HCI APPROX 28'HX40'WX260' ALL STEEL CLEAR SPAN SORTER BUILDING, 26-GAUGE STEEL, 25 LB SNOW LOAD, 80 MPH WIND LOAD & LIGHTS (MACHINERY REMOVAL HAS PRIORITY OVER BUILDING REMOVAL. PLEASE CONSULT AUCTION SITE REP PRIOR TO BIDDING)</p>
<p>545 NEWNES 20' 38-BIN J-BAR SORTER W/4' BINS, (2) 4' 6-STRAND 81X TRANSFERS, 6-STRAND 81X INCLINE TRANSFER TO 6-STRAND SPEED UP TRANSFER, (4) 40' 5-STRAND 81X TAKE AWAY TRANSFERS, S-DRIVE W/SKK GEARHEAD MOTORS, CATWALK & STAIRS</p>	<p>553 LSI 20' RH MECHANICAL PLANER STACKER W/60" 5-ARM LOWERING HOIST, (5) LUMBER DEALING ARMS, APPROX. 20' 2-SECTION 5-STRAND 81X INFEED TRANSFER, ALL DRIVES, SUPPORTS & MARKED CONTROLS</p>
<p>546 BALDOR LOT, BALDOR 75 HP MOTOR TO FALK SQUARE BOX REDUCER W/DRIVE CHAIN, ALLEN BRADLEY 200 HP DRIVE & TRANSFORMER W/CONTENTS (NO WIRE OUTSIDE OF BOX)</p>	<p>554 APPROX 10' 10-STRAND UNSCRAMBLER W/DRIVE & SUPPORTS</p>
<p>547 15 HP HYDRAULIC UNIT W/HOLDING TANK, TANK IS EMPTY</p>	<p>555 APPROX 14' 5-STRAND 81X INFEED TRANSFER (FROM SORTER), W/DRIVE & SUPPORTS</p>
<p>548 6-STRAND 90-DEGREE ENGINEERED CORNER W/LUGGED CHAIN, SUPPORTS & WALKWAY</p>	<p>556 SQUARE D 6 5-SECTION MCC W/(18) SWITCHES (LOCATED IN SMALL WOOD BUILDING, NO WIRE OUTSIDE OF BOX)</p>
<p>549 APPROX 14' 81X LUGGED CHAIN INFEED TRANSFER (TO LOT 548) W/(9) APPROX 10' EVEN END ROLLS, SUPPORTS & WALKWAY</p>	<p>557 ALLEN BRADLEY 3-SECTION MCC W/(13) SWITCHES (NO WIRE OUTSIDE OF BOX)</p>
<p>550 DUAL SQUID INK LUMBER MARKING STATION</p>	<p>558 LOT, (4) YASKAWA V1000 5 HP DRIVES (NO WIRE OUTSIDE OF BOX)</p>
	<p>559 ALLEN BRADLEY SLC-500 PLC (NO WIRE OUTSIDE OF BOX)</p>

HAMPTON LUMBER COMPANY - ONLINE AUCTION 5/29/2024-6/5/2024

LOT #	LOT #
560 ALLEN BRADLEY SLC-500 PLC (NO WIRE OUTSIDE OF BOX)	569 SKK 10 HP/68 RPM GEARHEAD MOTOR W/DRIVE CHAIN (DRIVE FOR LOT 567)
561 LOT, CH EATON 25 KVA TRANSFORMER, 240/480V TO 120/240V W/MARKED LIGHTING PANEL (NO WIRE OUTSIDE OF BOX)	570 RAMTECH APPROX 9' 2-STRAND 81X OUTFEED TRANSFER W/DRIVE
562 LINCOLN IDEALARC 250 AC/DC WELDER	571 RAMTECH APPROX 25' 2-STRAND 81X OUTFEED TRANSFER W/(3) 15' JUMP ROLLS & SUPPORTS
563 APPROX 6'X50' OUTFEED ROLLCASE W/APPROX 25' 4-STRAND H78 JUMP TRANSFER & SUPPORTS TO GROUND	572 SKK 5 HP/56 RPM GEARHEAD MOTOR W/DRIVE CHAIN (DRIVE FOR LOT 571)
564 SKK 10 HP/56 RPM GEARHEAD MOTOR W/DRIVE CHAIN (DRIVE FOR LOT 563)	573 SKK 3 HP/56 RPM GEARHEAD MOTOR W/DRIVE CHAIN (DRIVE FOR LOT 571)
565 SKK 10 HP/100 RPM GEARHEAD MOTOR W/DRIVE CHAIN (DRIVE FOR LOT 563)	574 RAMTECH APPROX 20' 3-STRAND OUTFEED TRANSFER, H&T SPROCKETS & SUPPORTS
566 SIGNODE MHT-MP44 PLASTIC BANDING STATION, TOP, BOTTOM & SIDE SQUEEZE, EVEN END BUMPERS, STICKER MAGAZINE, 50 HP & 10 HP HYDRAULIC UNITS, MARKED CONTROLS & ELECTRICS, STEEL BUILDING (SPARE BANDING HEADS & PARTS SOLD AT LOTS 636-647)	575 SKK 7-1/2 HP/56 RPM GEARHEAD MOTOR W/DRIVE CHAIN (DRIVE FOR LOT 574)
567 APPROX 60"X24' INFEEED ROLLCASE W/APPROX 25' 4-STRAND H78 INFEEED JUMP TRANSFER, S-DRIVE	576 RAMTECH APPROX 20' 3-STRAND OUTFEED TRANSFER, H&T SPROCKETS & SUPPORTS
568 SM CYCLO 10 HP/43:1 RATIO GEARHEAD MOTOR W/DRIVE CHAIN (DRIVE FOR LOT 567)	577 SKK 7-1/2 HP/56 RPM GEARHEAD MOTOR W/DRIVE CHAIN (DRIVE FOR LOT 576)
	578 LOT, (10) MARKED DISCONNECTS

HAMPTON LUMBER COMPANY - ONLINE AUCTION 5/29/2024-6/5/2024

LOT #	LOT #
SALE MOVES TO PALLET MILL BUILDING	612 TECO
601 RELIANCE	100 HP/1,775 RPM/404T FRAME AC MOTOR
300 HP/1,150-2,000 RPM/500V/B508ATZ FRAME DC MOTOR (SPARE FOR LOT 162)	613 LINCOLN
602 TOSHIBA	100 HP/1,785 RPM/404TS FRAME AC MOTOR
250 HP/3,570 RPM AC MOTOR	614 WEG
603 TOSHIBA	75 HP/1,184 RPM AC MOTOR
200/1,185 RPM AC MOTOR	615 TOSHIBA
604 NEWMAN	75 HP/885 RPM/444T FRAME AC MOTOR
150 HP/885 RPM AC MOTOR	616 TOSHIBA
605 TOSHIBA	75 HP/1,765 RPM AC MOTOR
150 HP/1,160 RPM/445TZ FRAME AC MOTOR	617 TECO
606 BROOKS	75 HP/1,775 RPM/404T FRAME AC MOTOR
150 HP/1,170 RPM AC MOTOR	618 TECO
607 TOSHIBA	75 HP/1,770 RPM AC MOTOR
150 HP/1,180 RPM AC MOTOR	619 SIEMENS
608 WEG	40 HP/1,780 RPM/324T FRAME AC MOTOR
150 HP/1,780 RPM AC MOTOR	620 AC MOTOR (NO DATA)
609 LINCOLN	621 AC MOTOR (NO DATA)
150 HP/1,780 RPM/444TS FRAME AC MOTOR	622 BALDOR
610 WEG	30 HP/1,765 RPM AC MOTOR
125 HP/890 RPM AC MOTOR	623 BALDOR
611 TOSHIBA	5 HP/1,765 RPM AC MOTOR (UNUSED)
100 HP/1,765 RPM AC MOTOR	624 BALDOR
	3 HP/1,765 RPM AC MOTOR (UNUSED)

HAMPTON LUMBER COMPANY - ONLINE AUCTION 5/29/2024-6/5/2024

LOT #	LOT #
625 LOT, ASSORTED MOTORS ON PALLET	640 LOT, (2) SIGNODE MHT80 POWER STRAPPING MACHINES W/TEST STAND
626 LOT, ASSORTED MOTORS ON PALLET	641 LOT, SIGNODE BANDER HEAD PARTS
627 LOT, ASSORTED MOTORS ON PALLET	642 SPARE STAR HYDRAULIC DRIVE FOR BANDER END SQUEEZE
628 LOT, ASSORTED MOTORS ON PALLET	643 LOT, ASSORTED STEEL & POLY BANDING
629 LOT, ASSORTED MOTORS ON PALLET	644 BANDING CART
630 LOT, ASSORTED GEARHEAD MOTORS ON PALLET	645 SIGNODE BANDING REEL
631 LOT, ASSORTED STATORS ON PALLET	646 SIGNODE BANDING REEL
632 LOT, ASSORTED STATORS ON PALLET	647 SIGNODE BANDING REEL
633 LOT, ASSORTED MOTORS ON PALLET	648 LOT, FRIGIDAIRE 15,000 BTU A/C UNIT (UNUSED) W/FRIGIDAIRE A/C UNIT (USED) & DAYTON FAN (UNUSED)
634 2021 WESTERN PNEUMATICS 1024-3111 HIGH PRESSURE ROTARY LOBE BLOWER SERIAL NUMBER: A50047	649 LOT, FOSTORIA HEATER (UNUSED) & EATON SPX3000-RT2U NETPACK G2 (USED)
635 LOT, (6) SECTIONS OF DISASSEMBLED SQUARE D 6 MCC	650 LOT, ASSORTED GARBAGE CANS
636 SIGNODE MHT80 POWER STRAPPING MACHINE SERIAL NUMBER: 400248	SALE MOVES TO OTHER SIDE
637 SIGNODE MHT80 POWER STRAPPING MACHINE SERIAL NUMBER: 7580184	651 LOT, DEBARKER PARTS FOR LOT 128
638 SIGNODE MHTM44 POWER STRAPPING MACHINE SERIAL NUMBER: 280080	652 LOT, DEBARKER PARTS FOR LOT 128
639 SIGNODE MHT80 POWER STRAPPING MACHINE SERIAL NUMBER: 400881	

HAMPTON LUMBER COMPANY - ONLINE AUCTION 5/29/2024-6/5/2024

LOT #	LOT #
653 LOT, DEBARKER PARTS FOR LOT 128	673 LOT, ASSORTED RESAW PARTS FOR LOTS 170 & 190
654 LOT, DEBARKER PARTS FOR LOT 128	674 LOT, ASSORTED RESAW PARTS FOR LOTS 170 & 190
655 LOT, DEBARKER PARTS FOR LOT 128	675 LOT, ASSORTED RESAW PARTS FOR LOTS 170 & 190
656 LOT, DEBARKER PARTS FOR LOT 128	676 LOT, ASSORTED RESAW PARTS FOR LOTS 170 & 190
657 LOT, DEBARKER PARTS FOR LOT 128	677 LOT, ASSORTED RESAW PARTS FOR LOTS 170 & 190
658 LOT, DEBARKER PARTS FOR LOT 128	678 LOT, ASSORTED RESAW PARTS FOR LOTS 170 & 190
659 LOT, DEBARKER PARTS FOR LOT 128	679 LOT, ASSORTED RESAW PARTS FOR LOTS 170 & 190
660 LOT, ASSORTED HEADRIG PARTS FOR LOT 167	680 LOT, ASSORTED GANG EDGER PARTS FOR LOT 246
661 LOT, ASSORTED HEADRIG PARTS FOR LOT 167	681 LOT, ASSORTED GANG EDGER PARTS FOR LOT 246
662 LOT, ASSORTED HEADRIG PARTS FOR LOT 167	682 LOT, ASSORTED GANG EDGER PARTS FOR LOT 246
663 LOT, ASSORTED HEADRIG PARTS FOR LOT 167	683 LOT, ASSORTED GANG EDGER PARTS FOR LOT 246
667 LOT, ASSORTED RESAW PARTS FOR LOTS 170 & 190	684 LOT, ASSORTED BOARD EDGER PARTS FOR LOT 260
668 LOT, ASSORTED RESAW PARTS FOR LOTS 170 & 190	685 LOT, ASSORTED BOARD EDGER PARTS FOR LOT 260
669 LOT, ASSORTED RESAW PARTS FOR LOTS 170 & 190	686 LOT, ASSORTED BOARD EDGER PARTS FOR LOT 260
670 LOT, ASSORTED RESAW PARTS FOR LOTS 170 & 190	687 LOT, ASSORTED BOARD EDGER PARTS FOR LOT 260
671 LOT, ASSORTED RESAW PARTS FOR LOTS 170 & 190	
672 LOT, ASSORTED RESAW PARTS FOR LOTS 170 & 190	

HAMPTON LUMBER COMPANY - ONLINE AUCTION 5/29/2024-6/5/2024

LOT #	LOT #
688 LOT, ASSORTED BOARD EDGER PARTS FOR LOT 260	702 LOT, ASSORTED PARTS IN THIS AREA
689 LOT, ASSORTED BOARD EDGER PARTS FOR LOT 260	703 LOT, ASSORTED PARTS IN THIS AREA
690 LOT, ASSORTED BOARD EDGER PARTS FOR LOT 260	704 LOT, ASSORTED PARTS IN THIS AREA
691 LOT, ASSORTED BOARD EDGER PARTS FOR LOT 260	705 LOT, ASSORTED PARTS IN THIS AREA
692 LOT, ASSORTED BOARD EDGER PARTS FOR LOT 260	706 LOT, ASSORTED PARTS IN THIS AREA
693 LOT, ASSORTED TRIMMER & STACKER PARTS FOR LOTS 330, 343, 503 & 553	707 LOT, (2) CHROMED PINEAPPLE ROLLS
694 LOT, ASSORTED TRIMMER & STACKER PARTS FOR LOTS 330, 343, 503 & 553	708 LOT, ASSORTED PARTS
695 LOT, ASSORTED TRIMMER & STACKER PARTS FOR LOTS 330, 343, 503 & 553	709 LOT, ASSORTED PARTS IN THIS AREA
696 LOT, TOP & BOTTOM PROFILES FOR PLANER LOT 475	710 LOT, (2) ASSORTED CYLINDERS
697 LOT, ASSORTED PARTS FOR GANG EDGER LOT 246	711 LOT, (12) LOCTITE PC 9020 EPOXY CRUSHER BACKING
698 LOT, ASSORTED PARTS ON THIS PALLET	712 LOT, ASSORTED PLANER PARTS (FITS LOT 475)
699 LOT, ASSORTED PARTS ON THIS PALLET	713 LOT, (4) PALLETS OF ASSORTED CHROME ROLLS
700 LOT, ASSORTED PARTS ON THIS PALLET	714 LOT, CYLINDER & ROLL
701 LOT, 29" CHROMED & PARTIAL KNURLED ROLLS	715 LOT, ASSORTED MOTOR PARTS
	716 LOT, ASSORTED ITEMS IN THIS AREA
	717 LOT, ASSORTED ITEMS IN THIS AREA
	718 SHAFT & SPROCKET ASSEMBLY
	719 LOT, ASSORTED PARTS IN THIS AREA
	720 LOT, (6) SECTIONS OF APPROX 3-1/2'D X 9'W X 20'H PALLET RACKING W/(2) SECTIONS OF 3-1/2'D X 9'W X 14'H PALLET RACKING (MUST WAIT UNTIL EMPTY TO REMOVE)

HAMPTON LUMBER COMPANY - ONLINE AUCTION 5/29/2024-6/5/2024

LOT #	LOT #
721 LOT, (5) SECTIONS OF 3-1/2'D X 9'W X 14'H PALLET RACKING (EMPTY)	735 APPROX 1-1/2" THICK X 48"W X 64"L STEEL TABLE ON CASTERS W/(2) 8" SWIVEL BASE VISES
722 LOT, (5) SECTIONS OF 3-1/2'D X 9'W X 14'H PALLET RACKING W/(2) EXTRA 14' UPRIGHTS (EMPTY)	736 APPROX 1-1/2" THICK X 42"W X 60"L STEEL TABLE ON CASTERS W/(2) 8" SWIVEL BASE VISES
723 LOT, LARGE STEEL RACK W/STEEL STOCK	737 LOT, (2) BANG BOARDS
724 LOT, LARGE STEEL RACK W/STEEL STOCK	738 LOT, STEEL RACK W/CONTENTS
725 LARGE HYDRAULIC CYLINDER (FITS LOT 3)	739 LOT, ASSORTED SIZE STEEL SCREENS
726 2017 SPEEDAIRE 2 HP PORTABLE COMPRESSOR, 5-1/2 CFM, 135 PSI, 30 GALLON, SINGLE PHASE	740 LOT, ASSORTED UHMW WEAR STRIPS W/MARKED PALLET
727 MILLER CP300 DC WELDER W/GROUND	741 LOT, APPROX 1" THICK X 7-3/8"W X 16'L FINGER JOINTED CEDAR LUMBER
728 CHAIN SHARPENER	742 LOT, ASSORTED METAL MILL YARD SIGNS W/MARKED PALLET
729 KARCHER 3000 PRESSURE WASHER W/190 CC GAS ENGINE	743 LOT, ASSORTED UHMW SHEETS
730 MIGHTY LIFT 5,500 LB CAP PALLET JACK (CANNOT REMOVE UNTIL MONDAY, JUNE 24)	744 LOT, STEEL CART W/(3) FIREPROOF FILES (NO KEYS)
SALE MOVES OUTSIDE	745 STEEL CONTAINMENT BIN
731 LOT, STEEL RACK W/CONTENTS	746 STEEL CONTAINMENT BIN
732 LOT, (2) SETS OF STEEL SAWHORSES	747 STEEL HOPPER
733 12"X96" GRAVITY ROLLCASE	748 LOT, (10) SPILL PALLETS
734 APPROX 1" THICK X 60"W X 120"L STEEL TABLE W/(2) 8" SWIVEL BASE VISES	SALE MOVES TO MAIN SHOP
	751 BRADY PRINTER 1700 LABEL PRINTER

HAMPTON LUMBER COMPANY - ONLINE AUCTION 5/29/2024-6/5/2024

LOT #	LOT #
752 ATOS TEMPOSONIC VALVE	766 YASKAWA V1000 CIMR-VU4A0005FAA DRIVE (UNUSED)
753 CONTINENTAL HYDRAULICS TEMPOSONIC VALVE	767 LOT, (3) ALLEN BRADLEY POWERFLEX 70 5 HP DRIVES
754 CONTINENTAL HYDRAULICS TEMPOSONIC VALVE	768 LOT, CONTROL HANDLES
755 LOT, (3) ASSORTED VALVES	769 LOT, CONTROL HANDLES
756 LOT, (2) ASSORTED VALVES	770 JOE SCAN JS20-DL SCAN HEAD
757 LOT, (2) ASSORTED VALVES	771 JOE SCAN JS20-XS SCAN HEAD
758 LOT, (7) ASSORTED VALVES	772 JOE SCAN JS20 SCAN HEAD
759 CBS ARC SAFE REMOTE SWITCH SYSTEM	773 SQUARE D POWERPACT 800 AMP ADJUSTABLE TRIP BREAKER
760 SSO SYSTEMS DC INTEGRATOR 590+ DC DRIVE	774 LOT, ASSORTED BREAKERS IN THIS AREA
761 SAFTRONICS GP10 25 HP VECTOR AC DRIVE (UNUSED)	775 LOT, ASSORTED TEMPOSONIC WANDS IN THIS AREA
762 SAFTRONICS FRENIC 5000GII 5 HP AC DRIVE (UNUSED)	776 LOT, MARKED ELECTRICAL IN THIS AREA W/SHELVES
763 YASKAWA V1000 CIMR-VU4A0018FAA DRIVE (UNUSED)	777 LOT, MARKED ELECTRICAL IN THIS AREA W/SHELVES
764 YASKAWA GA500 GA50U4012ABA DRIVE (UNUSED)	778 LOT, MARKED ELECTRICAL IN THIS AREA W/SHELVES
765 YASKAWA GA500 GA50U4012ABA DRIVE (UNUSED)	779 LOT, MARKED ELECTRICAL IN THIS AREA W/SHELVES

HAMPTON LUMBER COMPANY - ONLINE AUCTION 5/29/2024-6/5/2024

LOT #	LOT #
780 LOT, MARKED ELECTRICAL IN THIS AREA W/SHELVES	792 LOT, ASSORTED KEY KNIFE KNIVES
781 LOT, MARKED PARTS DRAWERS W/CONTENTS	793 GRUNDFOS 3 HP/3,461 RPM/15.41 GPM PUMP (UNUSED)
782 LOT, MARKED CABINET W/ELECTRICS & MARKED INSTALLED ELECTRICS (MUST WAIT UNTIL EMPTY TO REMOVE)	794 LOT, MARKED ASSORTED VALVES W/SHELF & HOSE (NO HEATER)
783 LOT, MARKED PARTS BINS W/CONTENTS	795 LOT, ASSORTED SPROCKETS, VALVES & ASSORTED ON THIS SHELF (NO SHELVING)
784 LOT, MARKED PARTS BINS W/CONTENTS	796 LOT, ASSORTED BEARINGS ON THIS SHELF (NO SHELVING)
785 LOT, MARKED PARTS BINS W/CONTENTS	797 LOT, ASSORTED BEARINGS & CAM LOCKS ON THIS SHELF (NO SHELVING)
SALE MOVES TO PARTS WAREHOUSE	798 LOT, ASSORTED VIBRATORY CONVEYOR & ASSORTED ITEMS ON THIS SHELF (NO SHELVING)
786 LOT, ASSORTED BEARINGS ON THIS SHELF (NO SHELVING)	799 LOT, ASSORTED COUPLERS & ASSORTED ITEMS ON THIS SHELF (NO SHELVING)
787 LOT, ASSORTED BEARINGS ON THIS SHELF (NO SHELVING)	800 LOT, ASSORTED COUPLERS & ASSORTED ITEMS ON THIS SHELF (NO SHELVING)
788 LOT, ASSORTED HYDRAULIC PUMPS ON THIS SHELF (NO SHELVING)	801 LOT, ASSORTED MILL PARTS & SUPPLIES ON THIS SHELF (NO SHELVING)
789 LOT, ASSORTED HYDRAULIC PUMPS ON THIS SHELF (NO SHELVING)	802 LOT, ASSORTED MILL PARTS & SUPPLIES ON THIS SHELF (NO SHELVING)
790 LOT, ASSORTED HYDRAULIC PUMPS W/MARKED SHELVES	
791 LOT, ASSORTED PRECISION CHIPPER PARTS FOR LOTS 361, 370 & 395 W/STEEL CABINET	

HAMPTON LUMBER COMPANY - ONLINE AUCTION 5/29/2024-6/5/2024

LOT #	LOT #
803 LOT, ASSORTED STACKER PARTS FOR LOTS 352 & 353 IN THIS AREA W/SHELVING	813 LOT, (24) FLUORESCENT LIGHTS, (2) HEATERS & (1) FAN IN THESE ROOMS
804 LOT, ASSORTED TRIMMER PARTS FOR LOTS 330 & 503 IN THIS AREA W/SHELVING	814 MILWAUKEE 14" ABRASIVE CUT OFF SAW ON TABLE ATTACHED TO WALL
805 LOT, ASSORTED BOARD EDGER PARTS FOR LOT 260 IN THIS AREA W/SHELVING	815 LOT, ASSORTED MILL BELTS IN THIS AREA
806 LOT, ASSORTED GANG EDGER PARTS FOR LOT 246 IN THIS AREA W/SHELVING	816 LOT, ASSORTED MILL BELTS IN THIS AREA
807 LOT, ASSORTED 6' RESAW PARTS FOR LOT 190 IN THIS AREA W/SHELVING	817 COTTERMAN 5' ROLLING WAREHOUSE LADDER, 450 LB CAP
808 LOT, ASSORTED 5' RESAW PARTS FOR LOT 170 IN THIS AREA W/SHELVING	818 COTTERMAN 5' ROLLING WAREHOUSE LADDER, 450 LB CAP
809 LOT, ASSORTED HEADRIG PARTS FOR LOT 167 IN THIS AREA W/SHELVING	819 LOT, APPROX 4'X8' STEEL TABLE W/ASSORTED SUPPLIES & MARKED STEEL SHELF
810 LOT, ASSORTED BARKER PARTS FOR LOT 128 IN THIS AREA W/SHELVING	820 LOT, STEEL RACK W/CONDUIT BOLTED TO FLOOR
811 LOT, ASSORTED MILL PARTS IN THIS AREA W/SHELVING	SALE MOVES TO TRAILER AREA
812 LOT, (11) SECTIONS OF METAL SHELVING (NO CONTENTS, MUST WAIT UNTIL EMPTY TO REMOVE)	821 APPROX 8'X40' OFFICE TRAILER W/ROLL UP END DOOR, CUSTOM STEEL STEPS (NO TIRES OR CONTENTS, MUST WAIT UNTIL EMPTY TO REMOVE)
	822 LOT, LOOSE CONTENTS OF OFFICE TRAILER
	823 WRIGHT SELF-DUMPING HOPPER
	824 SELF-DUMPING HOPPER
	825 SELF-DUMPING HOPPER

HAMPTON LUMBER COMPANY - ONLINE AUCTION 5/29/2024-6/5/2024

LOT #	LOT #
826 BOTTLE RACK	838 LOUISVILLE
827 STEEL PLATFORM	12' FIBERGLASS STEP LADDER
828 MILLER TRAILBLAZER	839 WERNER
DC 300 AMP PORTABLE WELDER/10,000 WATT GENERATOR MOUNTED ON RACK W/FORK POCKETS, BOTTLE RACK, TORCH SET & LEADS	8' FIBERGLASS STEP LADDER
829 MILLER TRAILBLAZER	840 WERNER
DC 300 AMP PORTABLE WELDER/10,000 WATT GENERATOR MOUNTED ON RACK W/FORK POCKETS, BOTTLE RACK, TORCH SET & LEADS	8' FIBERGLASS STEP LADDER
830 APPROX 34"X36"X48" STEEL FUEL TANK W/GRACO HUSKY PNEUMATIC PUMP, TANK IS EMPTY	841 WERNER
831 APPROX 24"X24"X48" STEEL FUEL TANK W/FILL-RITE	8' FIBERGLASS STEP LADDER
ELECTRIC PUMP, TANK IS EMPTY	842 WERNER
832 APPROX 8'X8'X24' CARGO CONTAINER W/WOOD FLOOR, ROLL UP DOOR & LIGHTS (NO CONTENTS, MUST WAIT UNTIL EMPTY TO REMOVE)	8' FIBERGLASS STEP LADDER
833 LOT, LOOSE MARKED CONTENTS OF CONTAINER	843 WERNER
834 CUSTOM BUILT CHARCOAL BARBECUE	8' FIBERGLASS STEP LADDER
835 WERNER	844 LOUISVILLE
28' FIBERGLASS EXTENSION LADDER	8' FIBERGLASS STEP LADDER
836 LOUISVILLE	845 LOT, (3) WERNER 6' FIBERGLASS STEP LADDERS
16' FIBERGLASS STEP LADDER	846 LOT, (3) WERNER 6' FIBERGLASS STEP LADDERS
837 LOUISVILLE	847 LOT, (2) WERNER 12' FIBERGLASS EXTENSION LADDERS
16' FIBERGLASS STEP LADDER	848 LOT, ASSORTED LADDERS IN THIS AREA
	849A LOT, ASSORTED LENGTH PIKE POLES
	849B LOT, ASSORTED LENGTH PIKE POLES
	850A LOT, ASSORTED LENGTH PIKE POLES

HAMPTON LUMBER COMPANY - ONLINE AUCTION 5/29/2024-6/5/2024

LOT #	LOT #
850B LOT, ASSORTED LENGTH PIKE POLES	860 LOT, (2) MILWAUKEE 2780-20 & (1) 2880-20 18V, 4-1/2" GRINDERS W/(1) CHARGER (NO BATTERIES)
851 MILWAUKEE 2811-20 18V SUPER HAWG RIGHT ANGLE DRILL W/5 AMP PER HOUR BATTERY & CHARGER	861 LOT, (2) MILWAUKEE 2780-20 18V, 4-1/2" GRINDERS & (1) 2680-20 18V, 4-1/2" CUT OFF/GRINDER (NO BATTERIES OR CHARGERS)
852 DEWALT DCS367 20V VARIABLE SPEED RECIPROCATING SAW W/(2) 10 AMP PER HOUR & (1) 3 AMP PER HOUR BATTERIES W/CHARGER & CARRYING BASE	862 LOT, (2) MILWAUKEE 2730-20 18V, 6-1/2" CIRCULAR SAWS W/(1) 5 AMP PER HOUR BATTERY & CHARGER
853 MILWAUKEE 18V, 1-1/8" SDS PLUS ROTARY HAMMER W/5 AMP PER HOUR BATTERY, CHARGER & CARRYING CASE	863 LOT, (3) MILWAUKEE 18V RECIPROCATING SAWS W/(1) 5 AMP PER HOUR BATTERY & CHARGER
854 LOT, (2) MILWAUKEE 2863-20 18V, 1/2" SQUARE RING IMPACT WRENCHES W/(1) 12 AMP PER HOUR BATTERY & CHARGER	864 LOT, (3) MILWAUKEE 2821-20 18V RECIPROCATING SAWS W/(1) 5 AMP PER HOUR BATTERY & CHARGER
855 LOT, (2) MILWAUKEE 2863-20 18V, 1/2" SQUARE RING IMPACT WRENCHES W/(1) 5 AMP PER HOUR BATTERY & CHARGER	865 LOT, (2) MILWAUKEE 2646-20 18V GREASE GUNS W/(1) 5 AMP PER HOUR BATTERY & CHARGER
856 LOT, (3) MILWAUKEE 2704-20 18V, 1/2" HAMMER DRILL/DRIVERS W/(1) 5 AMP PER HOUR BATTERY & CHARGER	866 MILWAUKEE 2646-20 18V GREASE GUN W/(1) 5 AMP PER HOUR BATTERY & CHARGER
857 LOT, (1) MILWAUKEE 18V, 1/2" HAMMER DRILL/DRIVER & (2) 18V 1/2" DRILL DRIVERS W/(1) 5 AMP BATTERY & CHARGER	867 LOT, ASSORTED MILWAUKEE 18V POWER TOOLS TO INCLUDE BLOWER, HEAT GUN, FLASHLIGHT, BANDSAW & SHEAR W/(1) 2 AMP PER HOUR BATTERY & CHARGER
858 LOT, (1) MILWAUKEE 2903-20 & (2) 2803-20 18V, 1/2" DRILL DRIVERS W/(1) 5 AMP PER HOUR BATTERY & CHARGER	868 SIGNODE BXT3-16 18V POLY STRAPPING TOOL W/(3) BATTERIES & (3) CHARGERS
859 LOT, (4) MILWAUKEE 18V, 1/4" IMPACT DRIVERS W/(1) 5 AMP PER HOUR BATTERY & CHARGER	869 LOT, (2) CORDLESS POLY STRAPPING TOOLS (1 MISSING BATTERY & NO CHARGERS)

HAMPTON LUMBER COMPANY - ONLINE AUCTION 5/29/2024-6/5/2024

LOT #	LOT #
870 LOT, (3) PAC STRAPPING PRODUCTS APT-801 PNEUMATIC POLY STRAPPING TOOLS	882 LOT, ASSORTED MITUTOYO & STARRETT PRECISION MEASURING TOOLS
871 MILWAUKEE 6232-20 DEEP CUT BANDSAW, 120V	883 CDI 6004MFRMH TORQUE WRENCH
872 MILWAUKEE 6370-20 8" METAL CUTTING SAW, 120V	884 GEAR WRENCH 85077 TORQUE WRENCH W/DIGITAL READOUT
873 MILWAUKEE 6066 7"/9" SANDER, 120V	885 GEAR WRENCH 85076 TORQUE WRENCH W/DIGITAL READOUT
874 LOT, (1) SKILSAW SPT77WML & (1) SPT67M8 7-1/4" CIRCULAR SAWS, 120V	886 LOADRITE LR915 PRO SCALE SYSTEM FOR WHEEL LOADER
875 LOT, (1) MILWAUKEE 4-1/2" & (1) 5" GRINDERS, (1) 1/2" HEAVY DUTY DRILL, 120V	887 R&M OVERHEAD CRANE REMOTE CONTROL MODULE
876 LOT, ASSORTED CORDED POWER TOOLS, 120V	888 LOT, (2) GEAR WRENCH PARTIAL SOCKET SETS
877 LOT, (2) INGERSOLL RAND 1/2" & (1) 3/4" PNEUMATIC IMPACT WRENCHES	889 TCL 85S450G 85" TV W/REMOTE (NO POWER CABLE)
878 LOT, (1) INGERSOLL RAND 2190TI-6 1" DRIVE PNEUMATIC IMPACT WRENCH, (1) NAPA 6-231C 1/2" PNEUMATIC IMPACT WRENCH & (1) ARCONIC V-4 PNEUMATIC RIVET TOOL	890 SAMSUNG UN75RU8000F 75" TV W/REMOTE & POWER CABLE
879 LOT, (3) INGERSOLL RAND 135MAX PNEUMATIC AIR HAMMERS	891 NEOVO IFP-6502 65" TV (NO REMOTE OR POWER CABLE)
880 SKF TKSA41 LASER SHAFT ALIGNMENT SYSTEM	892 TCL 40S35OR 40" 1080P FULL HD RESOLUTION TV (UNUSED)
881 ANYTIME TOOLS 6"-12" OUTSIDE MICROMETER TOOL SET	