



PUBLIC ONLINE AUCTION



EDMAN COMPANY



Whole Log Chipping Facility & Rolling Stock



Start Date: 10AM | Wednesday - November 8



End Date: 10AM | Wednesday - November 15

Preview: 8AM to 4PM | Tuesday, November 14

Location: 2502 Marine View Drive, Tacoma, WA 98422

Go to murphyauction.com for more information!

4,005 HRS



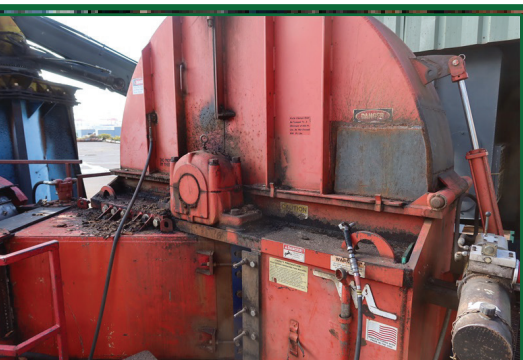
2019 JOHN DEERE 844L



1996 WAGNER LUMBER JACK LOG STACKER L80F



2008 LINK-BELT 240LX



2008 MORBARK 96" 4-KNIFE CHIPPER



2009 CATERPILLAR 519



2007 LINK-BELT 240LX

murphyauction.com



425.486.1246

NO MINIMUMS - NO RESERVES

HEAVY EQUIPMENT:

2019 JOHN DEERE 844L ARTICULATED RUBBER TIRE WHEEL LOADER, WELDCO-BEALES HYDRAULIC LOG GRAPPLES, FINGERTIP CONTROLS, JOYSTICK, BACK UP CAMERA, ENCLOSED CAB, HOUR METER READS: 4,005, S/N: 1DW844LXEL697373
2000 JOHN DEERE 744H ARTICULATED RUBBER TIRE WHEEL LOADER, PSM 43869 HYDRAULIC LOG LOADER, ENCLOSED CAB, HOUR METER READS: 14,720, S/N: DW744HX5754490
1996 WAGNER LUMBER JACK LOG STACKER L80F 33.5-33 & 23.5R25, ENCLOSED CAB, HOUR METER READS: 6,495, S/N: SUSA-96564
RAYGO WAGNER C-90 LOG STACKER, 33.5-33 & 23.5R25, ENCLOSED CAB, HOUR METER READS: 19,158, S/N: 039219
2016 GENIE GTH5519 4X4 TELE-HANDLER, 4-WHEEL STEER, ENCLOSED CAB W/BUCKET & FORKS, HOUR METER READS: 1,976, S/N: BR4951
2014 GENIE S-65 65' 4X4 R/T MANLIFT, 500 LB CAPACITY, HOUR METER READS: 2,867, S/N: S6014A-28492
2005 CHEVROLET 3500 10' 4X4 FLATBED, V8 AUTO, ODOMETER READS: 70,583, S/N: 1GBJK34G35E311489
2010 TYMCO 600 AIR SWEEPER TRUCK, INTERNATIONAL DURA STAR, JOHN DEERE SWEEPER DRIVE, MAXXFORCE 7 DIESEL, AUTO, CAMERA, SWEEPER HOURS: 1,088, ODOMETER READS: 6,749, S/N: 1HTJTSKN9BH341906
1998 GRADALL 534D9 4X4 R/T FORKLIFT, 10,000 LB FORKLIFT ATTACHMENT, HOUR METER READS: 5,713, S/N: 0544079
GMC T/A FLATBED BOOM TRUCK, GAS, AUTO, RO TC1204C HYDRAULIC, 3-STAGE, SINGLE JIB BOOM, FRONT & REAR OUTRIGGERS, ODOMETER READS: 52,466, S/N: TJM73ZV524759
2007 LINK-BELT 240LX HYDRAULIC SHOVEL, JEWEL HYDRAULIC GRAPPLE, ENCLOSED CAB, LOG GUARD, BOOM, HLB2038, SHOVEL, HOUR METER READS: 17,346, S/N: 240Q3-1757
2008 LINK-BELT 240LX HYDRAULIC SHOVEL, JEWEL HYDRAULIC GRAPPLE, ENCLOSED CAB, LOG GUARD, BOOM, HLB2038 S2, SHOVEL, HOUR METER READS: 13,576, S/N: K4J8-3725F
1990 PETERBILT 224 APPROX 2,000 GALLON SINGLE COMPARTMENT FUEL TRUCK, PTO DRIVEN PUMP, METER, NOZZLE & HOSE, ODOMETER READS: 35,050, S/N: 9D7MTF9T9MCM00094

RH DEBARKER:

NICHOLSON #27 A5A RH 6 ARM RING DEBARKER, 100HP, 230/480V, 3-PHASE DRIVE, S/N: 6747

PEDESTAL LOADERS:

(2) HUSKY BRUTE XL235 SERIES SELF CONTAINED PEDESTAL MOUNTED LOG LOADERS, S/N: 7733 & 7640
2009 CATERPILLAR 519 SELF CONTAINED PEDESTAL MOUNTED LOG LOADER W/GRAPPLE, ENCLOSED CAB, HEAT, A/C, 75HP, 1775/460V, 3-PHASE

CUT OFF SAWS & LOG SPLITTER:

CTR 65" PACKAGE SAW W/JOHN DEERE DIESEL DRIVE, SKID MOUNTED, APPROX 300 GALLON HYDRAULIC TANK, (2) APPROX 20' TRAY STATIONS, HOUR METER READS: 12,388
(2) KAMAN 72" CHOP SAWS, HYDRAULIC LOG HOLD DOWN, 10 EA 50" HOURGLASS ROLLS INFEED DECK, SPROCKET & CHAIN, 7 EA 50" OUTFEED ROLLS DECK, SPROCKET & CHAINS, SINGLE LEG SUPPORT STRUCTURE W/TOUCHING SLIDE STEEL, ATTACHED CATWALKS & STAIRS, S/N: E7359
LOG SPLITTER APPROX 200-TON CUSTOM BUILT HYDRAULIC LOG SPLITTER, CUMMINS 4BT TURBO DIESEL DRIVE MOTOR, 20' STROKE, UP/DOWN STRIKE PLATE, MORBARK CUSTOM CONTROL CAB, FORWARD & BACKWARD RAM LIMIT SWITCH, HOUR METER READS: 1,415

WHOLE LOG CHIPPER:

2008 MORBARK 96" 4-POCKETS 8-KNIFE CHIPPER W/CHUTE & SUPPORT STRUCTURE TO THE GROUND

HOG:

KIMWOOD 36"X48" HAMMER HOG W/GE 250HP/1760 RPM MOTOR, INFEED CHUTE & SUPPORT STRUCTURE, HYDRAULIC HOOD

CHIP BINS:

CROTHERS 40-UNIT CHIP BIN W/HYDRAULIC GATES, (4) BIN-O-CATORS, 4 LEG SUPPORT STRUCTURE
PEERLESS 64-UNIT CHIP BIN W/HYDRAULIC GATES, (4) BIN-O-CATORS, 6 LEG SUPPORT STRUCTURE
PEERLESS 32-UNIT CHIP BIN W/HYDRAULIC GATE, (2) BIN-O-CATORS, 4 LEG SUPPORT STRUCTURE

CONVEYORS:

APPROX. 150' DUAL CHAIN HYDRAULIC DRIVE OUT FEED LOG HAUL, SUPPORT STRUCTURE TO THE GROUND
APPROX. 2'X100' SMOOTH CLEAN OUT BELTING W/HEAD & TAIL SHAFT & DRIVE
BIN BELT APPROX. 165'X42" WIDE CHEVRON BELT, INCLINE COVERED BELT CONVEYOR, COUNTER BALANCED W/DRIVE
APPROX. 70'X42" SMOOTH CONVEYOR BELT W/DRIVE
APPROX. 250' DUAL BOX CHAIN INFEED LOG HAUL, SUPPORT STRUCTURE TO THE GROUND, STEEL PLATE BUMP WALL, ATTACHED SLIDESTEEL
APPROX. 130'X36" SMOOTH CLEAN OUT CONVEYOR BELTING, HEAD & TAIL SHAFT, MOTOR TO DRIVE
APPROX. 3'X16' DUAL CHAIN INFEED HOPPER W/MOTOR & DRIVE
APPROX. 7'X7' CROSS OVER INCLINE CHAIN W/DRIVE
APPROX. 60'X40" INCLINE CHEVRON FEED CONVEYOR W/DRIVE
HOG BELT APPROX. 292'X36" WIDE SMOOTH BELT INCLINE COVERED CONVEYOR, COUNTER BALANCED, SUPPORT STRUCTURE, DRIVE
APPROX. 40'X32" INFEED LOG HAUL, (2) HYDRAULIC VERTICAL FEED ROLL, HYDRAULIC HORIZONTAL FEED ROLLS, SUPPORT STRUCTURE TO THE GROUND
APPROX. 45'X4' INCLINE CHIP CHAIN W/DRIVE & SUPPORT STRUCTURE
APPROX. 70'X42" INCLINE SMOOTH BELT CONVEYOR W/DRIVE & SUPPORT



2016 GENIE GTH5519



1998 GRADALL 534D9



2010 INTERNATIONAL
DURA STAR



2014 GENIE S-65

PUBLIC ONLINE AUCTION

ELECTRICS:

2023 MOTORTRONICS INC MVC4-41200-ESWG 4 SERIES MEDIUM VOLTAGE SOLID STATE SOFT START
2022 MCM ENGINEERING P22003-1 5.5 KV LOAD INTERRUPTER SWITCH
SIEMENS 3-SECTION MCC, (9) TUBS, (1) SERVICE DISCONNECT, SIEMENS 4700 POWER FUNCTION PANEL
SIEMENS 3-SECTION MCC, (6) TUBS, (1) SERVICE DISCONNECT, SIEMENS 4700 POWER FUNCTION PANEL
IDM G5 SERIES AC VECTOR DRIVE
ALLEN BRADLEY SMC-3 150-C135NBD W/PS CAT PS4P25AFC CAPACITOR
SPRECHER & SCHUH PCS PCS-135-600V W/PS CAT PS4P25AFC CAPACITOR
ALLEN BRADLEY SMC-3 150-C135NBD W/PS CAT PS4P25AFC CAPACITOR
GENERAL ELECTRIC 300-LINE SOFT START 300 HP, 460V, 3 PHASE
MOTORTRONICS INC PS1-48100-P SOLID STATE AC MOTOR CONTROL
MOTORTRONICS INC PS1-48075-P SOLID STATE AC MOTOR CONTROL
CUTLER-HAMMER FREEDOM 2100 3-SECTION MCC W/(14) SWITCHES & (16) TABS SWITCH PANEL
ALLEN BRADLEY SMC FLEX VARI DRIVE
MOTORTRONICS INC PS1-4840-E SOLID STATE MOTOR CONTROL
MISCELLANEOUS SPARE ELECTRICS
SQUARE D MPWX-1-151-6131-1/MCS/475807-6-0017 1,500 KVA INSULATED TRANSFORMER

MISC. EQUIPMENT:

(2) INGERSOLL RAND SSR-EP40SE 40 HP ROTARY SCREW AIR COMPRESSORS, 230/460V, 3 PHASE, S/N: JE3800U97132
INGERSOLL RAND DXR300 1-1/2 HP REFRIGERATED COMPRESSED AIR DRYER, 208/230V, SINGLE PHASE, S/N: 97EDXR2335
300 GALLON VERTICAL PRESSURE VESSEL
MILLER BOBCAT 225G PLUS 225 AMP/8,000W PORTABLE WELDER/GENERATOR, GAS DRIVE, FLYING CAGE MOUNTED W/LEADS, HOUR METER READS: 1,174, S/N: KF834497
MILLER TRAILBLAZER 302 302 AMP/10,000W PORTABLE WELDER/GENERATOR, GAS DRIVE W/LEADS
MILLER SHOPMASTER 300 300 AMP POWER SUPPLY W/LEADS, 230/460V, SINGLE PHASE
SIMONDS 72HF104V3 KNIFE GRINDER, 480V
6" WILTON VISE
TAYLOR/DUNN ELECTRIC MILLRIGHT CART
GATES HYDRAULIC HOSE PRESS W/SUPPLIES
GE 60HP 1780 RPM, 460V, 3-PHASE MOTOR TO FALK GEAR BOX
ELLIOT 1,000 HP DRIVE, 447RPM, 4160V, 3-PHASE, S/N: NW1B
RELIANCE 250 HP DRIVE, 1190 RPM, 460V, 3-PHASE
MDI CR-85 METAL DETECTOR W/CONTROL BOX & SENSOR
7.5 HP HYDRAULIC PUMP UNIT, 230/460V, 3-PHASE
3 HEAD HYDRAULIC PUMP UNIT W/(3)75HP DRIVES, 230/460V, 3-PHASE
3 HEAD HYDRAULIC PUMP UNIT W/(2) 50HP DRIVES, 230/460V, 3-PHASE
AND MUCH MORE!



James G. Murphy Co.
murphyauction.com
425.486.1246



ELLIOT 1,000 HP DRIVE



3X75HP HYDRAULIC UNIT



TERMS & CONDITIONS



13% BUYERS PREMIUM ON ALL ITEMS

DUE TO INSURANCE AND SAFETY REASONS, CHILDREN UNDER 12 CANNOT BE ADMITTED

PAYMENT: FULL PAYMENT MUST BE MADE NO LATER THAN 5 PM, WEDNESDAY, NOVEMBER 15TH. PAYMENT MUST BE MADE BY ONLINE CREDIT CARD, CASHIERS CHECK OR WIRE TRANSFER ONLY. AFTER THE AUCTION CLOSSES & YOU RECEIVE YOUR EMAILED INVOICE, PLEASE REPLY AND WE WILL CHARGE YOUR CARD ON FILE.

REMOVAL: SMALL ITEMS MUST BE REMOVED NO LATER THAN 4:00 PM, WEDNESDAY, NOVEMBER 22ND.
LARGE ITEMS MUST BE REMOVED NO LATER THAN FRIDAY, DECEMBER 15TH
REMOVAL HOURS: 8:00 AM TO 4:00 PM, MONDAY THROUGH FRIDAY NOVEMBER 16TH THRU DECEMBER 15TH.
NO WEEKEND OR HOLIDAY REMOVAL.

WARRANTY DISCLAIMER: ALL SALES ARE FINAL. ALL ITEMS ARE BEING SOLD "AS IS, WHERE IS", WITH ALL FAULTS AND WITHOUT ANY WARRANTIES AS TO MERCHANTABILITY OF FITNESS FOR A PARTICULAR PURPOSE. THE PRINCIPAL, THE AUCTIONEER, THE ADVERTISING COORDINATOR, AND ANY OF THEIR AGENTS MAKE NO EXPRESS OR IMPLIED WARRANTIES OF ANY TYPE.

ADVERTISING DISCLAIMER: ALL INFORMATION WAS OBTAINED FROM SOURCES DEEMED RELIABLE. ALTHOUGH EVERY PRECAUTION HAS BEEN TAKEN TO ENSURE ACCURACY, THE PRINCIPAL, THE JAMES G. MURPHY CO., THE ADVERTISING COORDINATOR AND ALL THEIR AGENTS SHALL NOT BE RESPONSIBLE FOR ANY ERRORS OR OMISSIONS THEREIN. IT IS FOR THIS REASON THAT WE RECOMMEND THAT ALL ITEMS BE THOROUGHLY INSPECTED PRIOR TO THE POINT OF SALE.

ONLINE BIDS: FAILURE TO AWARD BID - ONLINE BIDDERS WILL NOT HAVE ANY CLAIM AGAINST THE JAMES G. MURPHY CO. FOR FAILURE TO SUBMIT BIDS TO THE AUCTIONEER OR ANY ERROR ON THE BIDDING PLATFORM. IN SOME INSTANCES, THE BIDDING PLATFORM MAY SHOW AN ITEM AWARDED TO AN ONLINE CUSTOMER; HOWEVER, WE RESERVE THE RIGHT TO WITHDRAW A BID AWARDED IN ERROR.

PLEASE SEE MURPHYAUCTION.COM FOR FULL TERMS & CONDITIONS

1.800.426.3008 - 425.486.1246 - murphyauction.com



ASSORTED CONVEYORS



KAMAN



200-TON LOG SPLITTER



HUSKY BRUTE XL235 SERIES



KIMWOOD
36\"X48\" HOG



James G. Murphy Co.

Commercial & Industrial Auctioneers
P.O. Box 1127, Marysville, WA 98270

PRESORTED
FIRST CLASS MAIL
U.S. POSTAGE
PAID
SEATTLE, WA
PERMIT NO. 963



**REGISTER
TO BID @
MURPHYAUCTION.COM**

PUBLIC ONLINE AUCTION

EDMAN COMPANY

Whole Log Chipping Facility & Rolling Stock

Start Date: 10AM | Wednesday - November 8

End Date: 10AM | Wednesday - November 15

Preview: 8AM to 4PM | Tuesday, November 14

Location: 2502 Marine View Drive, Tacoma, WA 98422

MURPHYAUCTION.COM FOR MORE INFO!



NICHOLSON #27 A5A
RH 6-ARM DEBARKER

NO MINIMUMS - NO RESERVES



PEERLESS



2023 MOTORTRONICS INC
MVC4-41200-ESWG 4 SERIES



RAYGO WAGNER C-90



2000 JOHN DEERE 744H

FOR MORE INFORMATION GO TO **MURPHYAUCTION.COM** • PHONE 425.486.1246