



PUBLIC ONLINE AUCTIONS



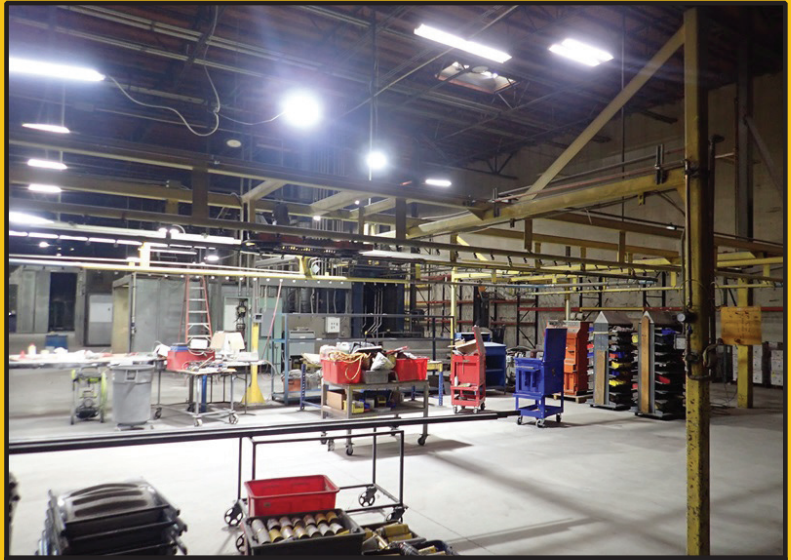
Powder Coating Equipment
Start Date: 10AM | May 31
End Date: 10AM | June 7
Preview: 8AM to 4PM | June 6
Location: 7951 2nd Ave. S.,
 Seattle, WA 98108



Powder Coating Equipment
Start Date: 10AM | June 1
End Date: 10AM | June 8
Preview: 8AM to 4PM | June 7
Location: 6700 Hardsen Rd. #101,
 Everett, WA 98203



BLAST ONE (RMC)



RAINER POWDER COATING LINE (DCI)



ROHNER (RMC)



ROHNER (RMC)



BAKER POWDER COATING LINE (DCI)



DESPATCH PSC4-18S-E (RMC)



2010 FREIGHTLINER BUSINESS CLASS M2 (DCI)



15'X30'X12' SANDBLAST BOOTH (DCI)

RMC POWDER COATING LIST:

BOOTHS:

BLAST ONE APPROX. 10'X20'X10' SANDBLAST BOOTH, STEEL FLOOR, LIGHTS, MAN DOOR, BARN DOORS, 6'X6' DUST COLLECTOR, MEDIA HOPPER, BUCKET ELEVATOR, AIR WASH, 5'X5' RECLAIM HOPPER, 2019 AXXIOM 6.5 CU. FT. BLAST POT, RPB BREATHABLE AIR SYSTEM, CONTROLS, S/N: BR00412

ROHNER APPROX. 14'X36'X10' SANDBLAST BOOTH, STEEL FLOOR, LIGHTS, (2) MAN DOORS, DUAL FILTER STATIONS, RPB BREATHABLE AIR SYSTEM, CONTROLS

ROHNER APPROX. 14'X36'X10' WALK-IN POWDER COAT BOOTH, (2) FILTRATION UNITS, LIGHTS, BARN DOORS, MAN DOORS, CONTROLS, BREATHABLE AIR

NORDSON VERSA-COAT B APPROX. 9'X10'X7' 3-SIDED POWDER COAT BOOTH, (2) FILTRATION UNITS, LIGHTS, CONTROLS, BREATHABLE AIR

APPROX. 9'X15'X7' 3-SIDED POWDER COAT BOOTH, LIGHTS, FARR TENKAY DUST COLLECTOR, BREATHABLE AIR

APPROX. 9'X20'X8' 3-SIDED POWDER COAT BOOTH, LIGHTS, WAGNER DUST COLLECTION SYSTEM

WALK-IN OVENS:

RAPID APPROX. 9'X20'9' WALK-IN OVEN, NATURAL GAS, CONTROLS

DESPATCH PSC4-18S-E APPROX. 12'X30'X8' WALK-IN OVEN, 500 DEGREES FAHRENHEIT MAX. TEMP., 1,500,000 BTU/HR, NATURAL GAS, CONTROLS, PNEUMATIC DOOR, S/N: 150481-L

GRIEVE SPECIAL WALK-IN 4'X12'X6' WALK-IN OVEN, 500 DEGREES FAHRENHEIT MAX TEMP., 500,000 BTU/HR, NATURAL GAS, CONTROLS, S/N: 660397

GRIEVE WTC QUAD WALK-IN APPROX. 9'X27'X9' WALK-IN OVEN, 425 DEGREES FAHRENHEIT MAX TEMP., 1,200,000 BTU/HR, NATURAL GAS, CONTROLS

SANDBLASTING CABINET:

ECONOLINE 48" SANDBLAST CABINET W/JET JDCD-1.5 CYCLONE DUST COLLECTOR

AIR COMPRESSORS:

(2) **2015 SULLIVAN PALATEK PNEUTECH 50UD** 50 HP ROTARY SCREW AIR COMPRESSORS, HOUR METER READS: 11,900 & 17,750, S/N: 1508040004 & 15080400003

2001 ATLAS COPCO G918 25 HP ROTARY SCREW AIR COMPRESSOR, HOUR METER READS: 27,000, S/N: AII261379

ROLLING STOCK:

2006 HYSTER H70FT 6,600 LB CAP. SOLID TIRED FORKLIFT, 138" 2-STAGE MAST, SIDE SHIFT, CAB, PROPANE, FINGER CONTROLS, HOUR METER READS: 9,700, S/N: L177B09242D

MITSUBISHI FGC25N 4,750 LB CAP. SOLID TIRED FORKLIFT, 187" 3-STAGE MAST, SIDE SHIFT, PROPANE, HOUR METER READS: 5,260, S/N: AF82F43436

CART CADDY 5W ELECTRIC TRAILER DOLLY, S/N: 318987

POWDER COATING EQUIPMENT:

2015 & 2006 CLEMCO 2452 6 CU. FT. SANDBLAST POTS

NORDSON SURE COAT POWDER COAT GUN

(2) **NORDSON ENCORE LT** POWDER COAT GUN

(2) **NORDSON VERSA-SPRAY II** POWDER COAT GUNS

SAW HORSES, FORKLIFT BOOM ATTACHMENT, LADDERS, CARTS, RACKS, FANS, BLASTING SUPPLIES, WORKBENCH, CABINETS, FORK EXTENSIONS, HANGERS, RACKS, SUPPLY CARTS, HAND TOOLS, SHOP SUPPLIES, BLAST CARTS, STACKING RACKS, STEEL FRAMED 3-SIDED ENCLOSURE ON CASTERS, TRASH CANS, SAW HORSES, DRYING RACKS, MAN BASKET, WORK CART, STEEL TABLES, (10) SECTIONS OF PALLET RACKING, PALLET JACKS, FORK EXTENSIONS, PROPANE CAGE, SHIPPING STATION, BANDING CART, SHELVING, WAREHOUSE LADDER, CARTS, BLAST SUITS, LOCKERS & MUCH MORE!



(1 OF 2)
2015 SULLIVAN PALATEK
PNEUTECH 50UD



GRIEVE SPECIAL WALK-IN



GRIEVE WTC QUAD



NORDSON VERSA-COAT B



MITSUBISHI FGC25N



ECONOLINE



(2) NORDSON VERSA-SPRAY II



RAPID

DCI POWDER COATING LIST:

POWDER COATING LINE:

RAINER LINE TO INCLUDE: APPROX. 60' 5-COMPARTMENT WASH/RINSE TUNNEL, MANUAL BLOW DOWN CATWALK, BINKS 24' NATURAL GAS DRY OFF BOOTH, 30' CUSTOM BUILT PRIME BOOTH W/HOPPER, 90 DEGREE TURN, 20' PRIMER NATURAL GAS CURING OVEN, 90 DEGREE TURN, 30' POWDER COAT BOOTH W/NORDSON CYCLO-KINETIC POWDER RECLAIMER, 90 DEGREE ELEVATED CURING OVEN, 16' COOLING BOOTH, UNLOAD/RELOAD AREA, CONTROL PANELS, DISCONNECTS & STEEL SUPPORTS

BAKER LINE TO INCLUDE: APPROX. 40' 5-COMPARTMENT WASH/RINSE TUNNEL, MANUAL BLOW DOWN CATWALK, 45' DRY OFF OVEN, 90 DEGREE TURN, 20' POWDER COAT BOOTH W/DUAL FILTERS, 45' NATURAL GAS CURING OVEN, UNLOAD/RELOAD AREA, (2) AO SMITH WATER HEATERS, CONTROL PANELS, DISCONNECTS & STEEL SUPPORTS

BOOTHS:

APPROX. 15'X24'X16' POWDER COAT BOOTH, (2) DONALDSON ECB-3 FILTER UNITS, LIGHTS, BARN DOOR & CONTROLS
CUSTOM BUILT APPROX. 15'X30'X12' SANDBLAST BOOTH, STEEL FLOOR, LIGHTS, BARN DOOR, BUCKET ELEVATOR, HOPPER, RECLAIM HOPPER, WASTE COLLECTOR, BREATHABLE AIR & CONTROLS
15'X15'X8' 3-SIDED WASH/RINSE BOOTH, LIGHTS & FAN

OVENS:

(2) 9'X28'X8' CURING OVENS, NATURAL GAS (ONE NEEDS WORK)
BAYCO 5'X6'X5' BURN OFF OVEN, TRACK MOUNTED CART, NATURAL GAS & CONTROLS

ROLLING STOCK:

2010 FREIGHTLINER BUSINESS CLASS M2 26' S/A BOX TRUCK, DIESEL, AUTO, LIFT GATE, AIR BRAKES , ODOMETER READS: 197,800, S/N: 1FVACWDT3ADAT6172
2008 MITSUBISHI FUSO FK260 26' C/O S/A BOX TRUCK, DIESEL, 6 SPD , ODOMETER READS: 294,200, S/N: JL6HKS1E28K002035
CLARK C25CL 4,500 LB CAP. SOLID TIRED FORKLIFT, 189" 3-STAGE MAST, SIDE SHIFT, PROPANE , HOUR METER READS: 7,520, S/N: C232L-0156-9855-CNF
CLARK C30CL 5,600 LB CAP. SOLID TIRED FORKLIFT, 3-STAGE MAST, SIDE SHIFT, PROPANE, S/N:C232L-0997-9790-KF (TRANS. ISSUE)
2016 SKY JACK SJ1113226 26' ELECTRIC SCISSOR LIFT, S/N: 27029724
CROWN RM6025-45 4,500 LB CAP. STAND UP ELECTRIC FORKLIFT, TELESCOPIC MAST, SIDE SHIFT, CHARGER, S/N: 1A412992

STEAM CLEANER:

2012 ELECTRO-STEAM GENERATOR LB-60 ELECTRIC STEAM CLEANER, 60 KW, S/N: 40441

COMPRESSORS:

SULLAIR LS-16 APPROX. 75 HP ROTARY SCREW AIR COMPRESSOR , HOUR METER READS: 24,500
2006 COMPAIR L45SR 45 KW ROTARY SCREW AIR COMPRESSOR
SULLIVAN PALATEK 60UD 60 HP ROTARY SCREW AIR COMPRESSOR W/AIR DRYER

AIR DRYER:

2004 KAESER TE91 AIR DRYER W/VERTICAL RECEIVER TANK

POWDER COAT GUNS:

(2) **2011 WAGNER PRIMA SPRINT** POWDER COAT GUNS
2015 WAGNER SPRINT POWDER COAT GUN
2019 GEMA OPTISTAR 4.0 POWDER COAT GUN
(2) **WAGNER PRIMA SPRINT** POWDER COAT GUNS

ASSORTED EQUIPMENT:

ORWALK 3100 PLASTIC WASTE BALER, S/N: 48892
ASSORTED RACKING, PALLET RACKING, PALLET JACKS, (16) SECTIONS OF PALLET RACKING, FLOOR MACHINE, TOOLBOXES, CARTS, SHELVING, NUT/BOLT BINS, MILLER WELDER, JET BANDSAW, STEEL TABLE, DUMP HOPPER, PALLET JACK, SHOP SUPPLIES, SANDBLAST CABINET, DRILL PRESS, OXY/ACETYLENE SET, TOOL ROOM, BANDING CARTS, SHELVING, WAREHOUSE LADDER, DRYING RACKS, PRODUCT RACKS, HANGING RACKS, TABLES **AND MUCH MORE!**



(2) 9'X28'X8' CURING OVENS



BAYCO



SULLAIR LS-16



SULLICAN PALATEK 60UD



2008 MITSUBISHI FUSO FK260



CLARK C25CL



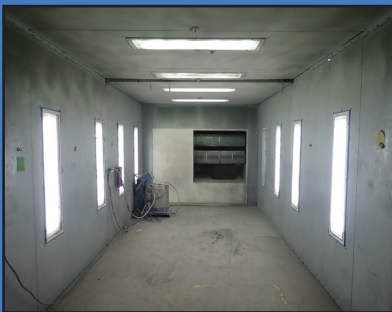
2016 SKY JACK SJ1113226



(16) SECTIONS OF PALLET RACKING



2001 ATLAS COPCO G918



9'X15'X7' POWDER COAT BOOTH



ASSORTED DRYING RACKS



NORDSON ENCORE LT



2006 HYSTER H70FT (RMC)



James G. Murphy Co.

Commercial & Industrial Auctioneers
P.O. Box 1127, Marysville, WA 98270

PRESORTED
FIRST CLASS MAIL
U.S. POSTAGE
PAID
SEATTLE, WA
PERMIT NO. 963



**REGISTER
TO BID @
MURPHYAUCTION.COM**

PUBLIC ONLINE AUCTIONS

Powder Coating Equipment

Start Date: 10AM | May 31

End Date: 10AM | June 7

Preview: 8AM to 4PM | June 6

Location: 7951 2nd Ave. S.,
Seattle, WA 98108



Powder Coating Equipment

Start Date: 10AM | June 1

End Date: 10AM | June 8

Preview: 8AM to 4PM | June 7

Location: 6700 Hardeson Rd. #101,
Everett, WA 98203



PUBLIC ONLINE AUCTION - NO MINIMUM - NO RESERVE



2011 WAGNER PRIMA SPRINT (DCI)



2004 KAESER TE91 (DCI)



ORWALK 3100 (DCI)



15'X15'X8' WASH/RONSE BOOTH (DCI)

FOR MORE INFORMATION GO TO MURPHYAUCTION.COM • PHONE 425.486.1246