

# LIVE AUCTION: DAY 2

**HYTORC HYDRAULIC APPROX. 30,000 LB WRENCH  
HEAVY DUTY SHELF W/HOPPERS, MANUAL TUBING BENDER  
SHOES, HYDRAULIC PUMPS**

**TRINCO 40S SANDBLAST CABINET W/RECLAIMER  
STRESS RELIEF BENCH W/MARTIN METALTECH MX780  
VIBRATORY METAL STABILIZATION, S/N: 23898A  
SECONDARY STRIPPING TANK TO REMOVE CHROME  
RANKIN HARD FACE SYSTEM W/FEEDER & POWER SOURCE  
FILTER CART W/PUMP**

**SIDEWINDER PAINT STILL-RECLAIMER  
HTA SNOWBLOWER W/HONDA MOTOR  
AUTOBEND AB5-S7 CNC BACK GAUGE  
TORIT DOWNFLO AIR FILTER SYSTEM W/FAN  
(2) SPREADER BARS  
(8) DUMP BINS**

**CLARK PALLET JACK  
GREASE GUNS, MAG DRILLS, V-BLOCKS, VISES, JACK SCREWS,  
SAW GRINDER, WASTE OIL FILTERS, PUMPS & VACUUM  
SYSTEM, ANGLE PLATES, CI ROTARY TABLE & CI TABLE  
SHOP OFFICE TO INCLUDE: XEROX 3040 LARGE FORMAT  
COPIER, DESK, CHAIR & CABINETS**

**ROLLING STOCK**

**TAYLOR Y-52-WO 52,000 LB CAP., DETROIT DIESEL,  
HOUR METER READS: 561, S/N: 10-68-4707**

**CLARK 8,000 LB DUAL PNEUMATIC PROPANE FORKLIFT,  
S/N: A411949**

**DAEWOO GC25E 4,450 LB CAP. HRT PROPANE FORKLIFT,  
S/N: D370210**

**2000 INTERNATIONAL 4700 DT466 20' S/A FLATBED, LIFTGATE  
SKYJACK SJIII 3220 ELECTRIC SELF PROPELLED SCISSOR LIFT  
40' T/A FLATBED TRAILER WITH S/A DOLLY, YARD ONLY**



## TERMS AND CONDITIONS

10% BUYERS PREMIUM ON ALL ITEMS

15% BUYERS PREMIUM ON ALL ONLINE PURCHASES

Due to insurance and safety reasons, children under 12 cannot be admitted

**PAYMENT:** Full payment must be made by the close of business auction day. CASH, CASHIERS CHECK, WIRE TRANSFER, MASTERCARD OR VISA ONLY. Checks are accepted ONLY with Bank Letter of Guarantee.

**REMOVAL:** Customers are responsible for removing their items from the auction site. No purchases may be removed during the auction unless announced by the auctioneer. No purchases may be removed until all purchases are paid for. ALL ITEMS MUST BE REMOVED BY 4 PM, FRIDAY, AUGUST 9TH. Removal Hours: One hour after the auction or 8:00 am – 4:00 pm. NO WEEKEND REMOVAL.

**WARRANTY DISCLAIMER: ALL SALES ARE FINAL.** All items are being sold "As Is, Where Is," With All Faults and without any warranties as to merchantability of fitness for a particular purpose. The principal, the auctioneer, the advertising coordinator, and any of their agents make no express or implied warranties of any type. Failure to award bid: Online bidders will not have any claim against the James G. Murphy Co. for failure to submit bids to the auctioneer or any error on the bidding platform. In some instances the bidding platform may show an item awarded to a Online customer however we reserve the right to withdraw a bid awarded in error.

Complete terms and conditions of sale will be available at the time of sale. All information was obtained from sources deemed reliable. Although every precaution has been taken to ensure accuracy, the principal, the James G. Murphy Co., the advertising coordinator, and all of their agents shall not be responsible for any errors or omissions therein. It is for this reason that we recommend that all items be thoroughly inspected prior to the point of sale. Announcements made by the auctioneer at the time of sale take precedence over printed matter. Auctioneer reserves the right to sell accessories, parts or attachments on a separate and/or aggregate basis

**ABSENTEE BIDS:** Absentee bids will be accepted with 25% Deposit. Absentee bids under \$100.00 are not accepted. For complete rules regarding absentee bids call our office or inquire at the auction site.

**FOR MORE INFORMATION GO TO MURPHYAUCTION.COM • PHONE 425.486.1246**

# 2-DAY PUBLIC AUCTION

# CHROME INDUSTRIAL REPAIR

MACHINE SHOP & ROLLING STOCK - VANCOUVER, WA



PACIFIC 200 12' 200 TON X 12' HYDRAULIC PRESS BRAKE, 36" THROAT, 14" WIDE, TOOL BED, CUSTOM DIE & STRAIGHTENING DIES



**James G. Murphy Co.**

Commercial & Industrial Auctioneers  
P.O. Box 82160, Kenmore, WA 98028

PRESORTED  
FIRST CLASS MAIL  
U.S. POSTAGE  
PAID  
SEATTLE, WA  
PERMIT NO. 963

NO MINIMUMS • NO RESERVES  
BID LIVE OR BID ONLINE



**James G. Murphy Co.**

# 2-DAY AUCTION

11901 NE 56TH CIRCLE, VANCOUVER, WA 98682

**DAY 1: JULY 24: 9:00AM**



PREVIEW: JULY 22 & 23: 8:00AM - 4:00PM

ONLINE BIDDING  
AVAILABLE

**DAY 2: JULY 25: 9:00AM**



PREVIEW: JULY 22 - 24: 8:00AM - 4:00PM

ONLINE BIDDING  
AVAILABLE

# MACHINE SHOP & ROLLING STOCK

FOR MORE INFORMATION GO TO [MURPHYAUCTION.COM](http://MURPHYAUCTION.COM) • PHONE 425.486.1246



**JG M** NO MINIMUMS - NO RESERVES **JG M**

# 2-DAY AUCTION

## CHROME INDUSTRIAL REPAIR

### MACHINE SHOP & ROLLING STOCK

11901 NE 56TH CIRCLE, VANCOUVER, WA 98682

#### Day One:

**Date: 9:00 AM - Wednesday, July 24**  
**Preview 8:00 AM to 4:00 PM - Tuesday, July 22**

#### Day Two:

**Date: 9:00 AM - Wednesday, July 25**  
**Preview 8:00 AM to 4:00 PM - Tuesday, July 23**

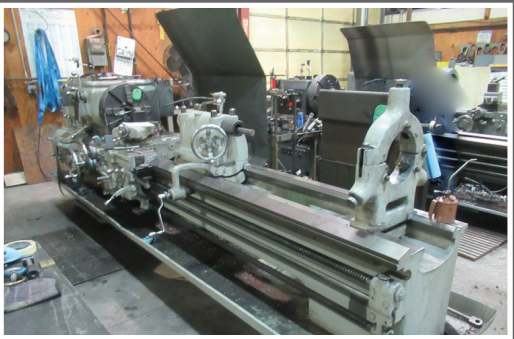
## MACHINE SHOP & ROLLING STOCK



**BUTLER 60"X240" OPEN SIDE PLANER MILL**



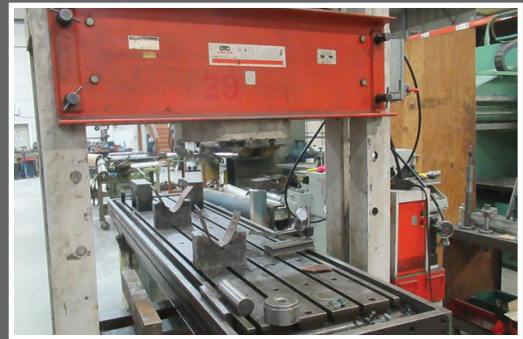
**LEBLOND NR 62" SWING X 26' CENTERS**



**LEBLOND  
20-24" SWING X 8' CENTERS**



**SCOTCHMAN 701**



**OTC ROLL-BED**

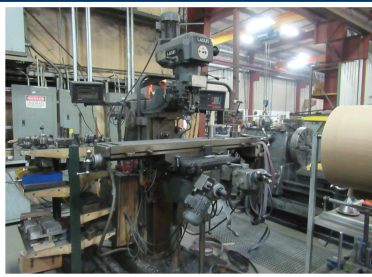
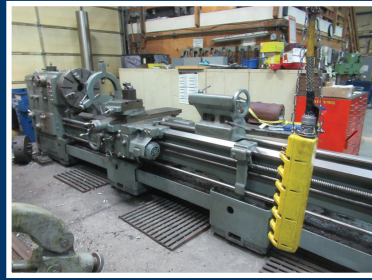
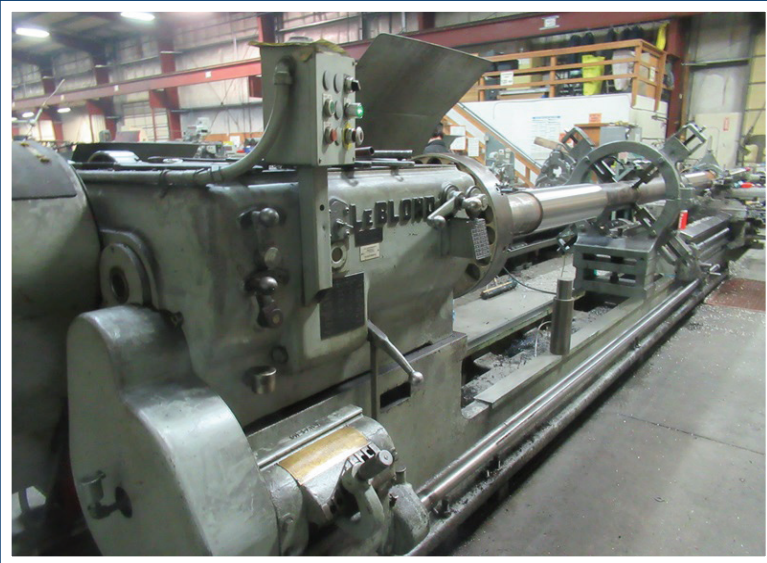
**James G. Murphy Co.**  
Commercial & Industrial Auctioneers



1.800.426.3008 - 425.486.1246  
[murphyauction.com](http://murphyauction.com)



# LIVE AUCTION: DAY 1



## DAY 1 - HIGHLIGHTED ITEMS:

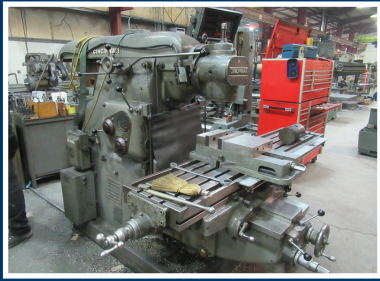
- BUTLER 60" X 240" OPEN SIDE PLANER MILL W/YANCEY RAIL HEAD, 60" VERTICAL, 108" ARM, YANCEY SIDE HEAD, GN11 SERIES CONTROLS, RIGHT ANGLE HEAD, (4) STANLEY TOOLBOXES W/TOOLING**
- GRAY 48" X 48" X 120" DOUBLE HOUSING PLANER/MILL W/YANCEY VERTICAL HEAD, SONY DIGITAL READOUT, (8) CUSTOM VISES & TOOLING, S/N: 9049**
- GRAY 36' X 36' X 16' OPEN SIDE PLANER W/TANCEY SIDE HEAD, YANCEY VERTICAL HEAD, SONY CONTROLS, ANGLE HEAD & TOOLING, S/N: 9501**
- LEBLOND NR 62" SWING X 26' CENTERS LATHE W/(4) STEADY RESTS, TAPER ATTACHMENT, FACE PLATE, 4-JAW CHUCK, 8' BED EXTENSION (LOCATED IN CONTAINER) & TOOLING, S/N: NR64**
- LEBLOND 56" SLIDING GAP, 30" SWING OVER WAYS, 17' CLOSED, 12' IN THE GAP, 26'6" CENTERS, GAP BED LATHE W/3-JAW CHUCK, TAIL STOCK, ROTARY STEADY REST, DORIAN TOOL HOLDER & TOOLING**
- LEBLOND 40" SWING X 24' CENTERS, 26' BED LATHE W/4-JAW CHUCK, TAPER ATTACHMENT, (3) STEADY RESTS, TOOL HOLDER, TAIL STOCK, FACE PLATE & TOOLING, S/N: NK397**

- LEBLOND 32" SWING, 12' BETWEEN CENTERS, 14' 6" BED LATHE W/4-JAW CHUCK, ALORIS TOOL HOLDER, TAIL STOCK, (2) STEADY RESTS, FACE PLATES & TOOLING, S/N: NI1410**
- LEBLOND 20-24" SWING X 8' CENTERS LATHE W/ALORIS TOOL POST HOLDER, TAPER ATTACHMENT, TAIL STOCK, STEADY REST & TOOLING, S/N: NF5253**
- COLBURN 60" MANUAL VERTICAL TURRET LATHE W/TOOLING**
- PBR TM250P 28" GAP BED LATHE, 13' 4" CENTERS, W/4-JAW CHUCK, TAIL STOCK, STEADY REST & TOOLING, S/N: 36051**
- AXELSON A25 28" SWING, 20' BETWEEN CENTERS, 26' BED LATHE W/4-JAW CHUCK, ROTARY STEADY REST, FACE PLATES, TAPER ATTACHMENT, TAIL STOCK, (3) STEADY RESTS & TOOLING, S/N: 1681**
- BINNS & BERRY TB 26" SWING X 14' 6" BETWEEN CENTERS POLISHING/GRINDING LATHE, TAIL STOCK, STEADY REST & TOOLING, S/N: 9463**
- MORI SEIKI 24" SWING X 10' CENTERS LATHE, 4-JAW, STEADY REST, TAIL STOCK, 3-JAW, ALORIS 3" HOLE & TOOLING, S/N: 3241**

**FOR DETAILS AND PHOTOS VISIT [MURPHYAUCTION.COM](http://MURPHYAUCTION.COM)**



# LIVE AUCTION: DAY 1



**AXELSON 20** 22-1/2" SWING 4'2" CENTERS LATHE, W/4-JAW CHUCK, 3-JAW CHUCK, ALORIS TOOL HOLDER, STEADY REST, TAIL STOCK & TOOLING, S/N: 4098

**SUMMIT 19"** SWING X 7'3" CENTERS, 8'6" BED LATHE W/3-JAW CHUCK, STEADY REST, TAIL STOCK, CARRIAGE, ROTARY STEADY REST, CHUCK & TOOLING, S/N: 73537321

**PRATT & WHITNEY MODEL C** 14" SWING, 52" CENTERS, 6' BED LATHE W/TOOL POST HOLDER, 3 & 4-JAW CHUCKS, TAIL STOCK, STEADY REST & TOOLING, S/N: 1694-641-1051

**AXELSON 16** 18-1/2" SWING, 10' BED LATHE W/4-JAW CHUCK, TOOL HOLDER, TAIL STOCK, STEADY REST, TAPER ATTACHMENT & TOOLING, S/N: 4723

**PRATT & WHITNEY MODEL C** 16" X 60" LATHE W/4-JAW CHUCK, TAPER ATTACHMENT, TAIL STOCK, TOOL HOLDER & TOOLING, S/N: M1696-1447-751

**CLAUSING COLCHESTER** 15" SWING X 50" CENTER, 64" OAL BED LATHE W/ALORIS TOOL POST HOLDER, CLIMAX, TAPER ATTACHMENT, 3 & 4-JAW CHUCKS, TAIL STOCK, STEADY REST, TOOLING

**BIRMINGHAM** VERTICAL MILLING MACHINE, 10" X 54", 3 HP, DIGITAL READOUT & TOOLING, S/N: S842H

**LAGUN FTVH-3** VERTICAL/HORIZONTAL MILLING MACHINE, 11" X 58" TABLE, (2) NEWALL DIGITAL READOUTS, TABLE FEED W/TOOLING BENCH & TOOLING

**CINCINNATI 205-12** HORIZONTAL MILLING MACHINE W/UNIVERSAL HEAD, 12" X 54" TABLE & TOOLING, S/N: 5J2P55-26

**SHARP FIRST LMV** VERTICAL MILLING MACHINE W/WISE, 9" X 42" TABLE, POWER FEED & TOOLING, S/N: 75067619

**PBA AFU-80** HORIZONTAL BORING MILL, 2-1/2", 36" X 36" ROTARY TABLE, NEWALL DIGITAL READOUT, VERTICAL HEAD & TOOLING

**MILWAUKEE MODEL H** HORIZONTAL MILL W/VERTICAL HEAD, (ARBORS IN CONTAINER), 18" X 96" TABLE, VISE & TOOLING, S/N: 35-4655

**UNIVERSAL** HORIZONTAL BORING MILL, 3" CAP, 26" X 58" TABLE, TAIL STOCK, 24" VERTICAL, 40" HORIZONTAL, 32" TRAVEL, SWI DIGITAL READOUT & TOOLING, S/N: T-3297

**CINCINNATI #4** VERTICAL MILL W/NEWALL DP7 DIGITAL READOUT W/WISE & TOOLING, S/N: 4AAP1P-17

**JET** MILLING & DRILLING MACHINE, S/N: 7506513

**CLIMAX** KEY MILL CUTTER

**JET** 3 HP MILLING HEAD

**MITTS & MERRIL NO.3** KEYSEATER W/TOOLING, S/N: G27328-8-56

**FISHER MACHINE** OIL GROOVER/FIGURE 8 BUSHING MACHINE

**CARLTON** 19" COLUMN X 6' ARM RADIAL ARM DRILL W/(2) TABLES & TOOLING, S/N: 2813-4A

**CINCINNATI BICKFORD** 14" COLUMN X 60" ARM, RADIAL ARM DRILL W/(2) T-SLOT TABLES, VISE, BENCH & TOOLING, S/N: 4E1051

**MORRIS MOR-SPEED** 8" COLUMN X 40" ARM, RADIAL ARM DRILL W/BOX TABLE, VISE & TOOLING, S/N: G883

**GIDDINGS & LEWIS SENSITIVE M100-420** PRECISION DRILL **BLANCHARD #18** 30" CHUCK, ROTARY SURFACE GRINDER, S/N: 5703

**LANDIS** 18" X 120" UNIVERSAL CYLINDRICAL GRINDER, S/N: 19828

**CINCINNATI** 16" X 72" UNIVERSAL CYLINDRICAL GRINDER, S/N: 3415-11-33-62-80342-04

**HAMMOND** 14" DOUBLE END GRINDER, S/N: 6141

**ROCKWELL/DELTA** 31-710 12" DISC/BELT GRINDER, S/N: KZ6701

**LANDIS** 10" X 48" UNIVERSAL CYLINDRICAL GRINDER, S/N: 24689

**THOMPSON 6C** SURFACE GRINDER W/16" X 72" MAG CHUCK W/WET FILTER SYSTEM & RADIUS DRESSER, S/N: 6C586065

**CUSTOM BUILT** 4" BELT GRINDER

**BALDOR** 5 HP DOUBLE END 14" PEDESTAL GRINDER, S/N: G14-84C-36

**HAMMOND WD-10-C** DOUBLE END CARBIDE GRINDER, S/N: 12845

**CINCINNATI 12FQ** DOUBLE END PEDESTAL GRINDER, S/N: 243357

**BALDOR** DOUBLE END PEDESTAL GRINDER

**BALDOR** 1/2 HP DOUBLE END TOOL GRINDER

**DELTA** 1/2 HP DOUBLE END TOOL GRINDER

**OLIVER 600** TOOL/DRILL GRINDER W/ TOOLING, S/N: G-8666

10-DRAWER METAL CABINET W/REAMERS, CUTTERS & MISC TOOLING

**SELLERS** TOOL/GRINGER W/TOOLING, S/N: 277S

**MAC** TOOLBOX W/MICS, BORE GAUGES, INSIDE MIC, HOLDERS, CHUCKS, BORING BARS

**AND MUCH MORE!**



ONLINE BIDDING  
AVAILABLE



**FOR DETAILS AND PHOTOS VISIT [MURPHYAUCTION.COM](http://MURPHYAUCTION.COM)**



# LIVE AUCTION: DAY 2



## DAY 2 - HIGHLIGHTED ITEMS:

**SCOTCHMAN 701** 70 TON HYDRAULIC IRONWORKER,  
24" PLATE, ANGLE SHEAR & TOOLING, S/N:15160C584R  
**PACIFIC 200** 12' 200 TON X 12' HYDRAULIC PRESS BRAKE,  
36" THROAT, 14" WIDE, TOOL BED, CUSTOM DIE &  
STRAIGHTENING DIES, S/N: 2892  
**OTC ROLL-BED** 200 TON HYDRAULIC PRESS,  
50" WIDTH X 72" VERTICAL W/TOOLING & 28" X 132"  
STRAIGHTENING TABLE  
**HANNIFIN SPECIAL** 100 TON OPEN SIDE HYDRAULIC PRESS  
W/TOOLING, S/N: C-67721.2  
**KR WILSON** 75 TON HYDRAULIC PRESS, S/N: 1790  
**TIDLAND** 50-TON HORIZONTAL PRESS W/HYDRAULIC PUMP  
**MANLEY 5-52** HYDRAULIC PRESS, S/N: 989  
**DAKE S-575** AIR HYDRAULIC PRESS FOR BROACHING,  
S/N: 167171  
200 TON HORIZONTAL WHEEL PRESS  
**SOLBERGA SE725** GEAR HEAD DRILL PRESS & TOOLING,  
S/N: 7204  
**BORTECH** BORE WELDER W/BORTECH 160M CONTROLS,  
LINCOLN POWER SUPPLY, BORTECH WIRE FEEDER &  
LINCOLN FEEDER W/SPARE CONTROLLER, S/N: 092109160M  
**L-TEC CM-50** WELDING & CUTTING SYSTEM W/L-TEC AST  
TRACER, 48" X 96" BURN TABLE  
**MILLER CP5VS** WELDER, 500 AMP W/AIRCO FEEDER &  
BERNARD CART, S/N: U54574  
**AIRCO CV-600** 600 AMP WELDER, S/N: RG702046  
**AIRCO CV-200II** 200 AMP WELDER W/AIRCO WIRE FEEDER,  
S/N: RG908050  
**LINCOLN 350MP** POWER MIG MACHINES  
**LINCOLN PRO-CUT 60** PLASMA CUTTER, S/N: U1930616970  
**AIRCO CV-600** 600 AMP W/AIRCO FEEDER, S/N: RG712417  
**MILLER DIALARC HF** W/COOLER, S/N: JA409380  
**ARONSON HD25MT** 2,500 LB CAP. WELDING POSITIONER,  
S/N: 65756  
**META-LAX 701** STRESS RELIEF & WELD CONDITIONER,  
S/N: 2296  
**WELD STATION** W/DONALDSON AIR FILTER, TABLE, SCREENS  
& C-CLAMPS

4' POWER ROLLS, SPOT WELDER & SHELF UNIT  
OXY/ACETYLENE W/CART, HOSE, TORCH & REGULATOR  
**COMPAIR** 15 HP ROTARY SCREW AIR COMPRESSOR W/(1) AIR  
STORAGE TANK  
**ROGERS** 25 HP HORIZONTAL AIR COMPRESSOR  
W/HORIZONTAL & VERTICAL TANK  
**SPEED CUT** 20" ABRASIVE CUTOFF SAW W/AIR FLOW  
SYSTEM DUST COLLECTOR SYSTEM, S/N: 2101002683  
**DOALL C916S** HORIZONTAL BANDSAW W/INFEED, CLAMP,  
MITER, S/N: 482-92308  
**MARVEL 14-14** HORIZONTAL HACKSAW, S/N: M14-624-68  
**COLUMBIA** 240" 80,000 LB TORQUE HYDRAULIC BENCH  
W/TOOLING  
**MANULI** HYDRAULIC HOSE CRIMPER, CUTOFF SAW, TABLE,  
UNIFLEX HOSE SKIVING MACHINE  
**RIDGID 535** PIPE MACHINE  
**CUSTOM BUILT** TUBE/PIPE BENDER W/SPARE DIES  
**MILLER VD25** 10 HP, 1,000 PSI PORTABLE HYDRAULIC PUMP,  
S/N: 73334100  
(2)ENERPAC HYDRAULIC PUMPS  
(2)SNAP-ON TOOLBOXES W/ASSORTED HAND TOOLS,  
WRENCHES, SOCKETS & PLIERS  
**HOMAK** SHOP TOOLBOX W/HAND TOOLS  
SET UP TABLE W/(4) VISES, HOLD DOWN & TOOLING  
LS PEDESTAL MOUNTED VISE  
**WILTON** PEDESTAL VISE  
**JOE FULLER JFRD20T** 20 TON POWER ROLLS W/(1) IDLER,  
S/N: 437  
**RANSOME R3PR** 3 TON CAP. POWER ROLLS, S/N: 623786  
**ARONSON C1000P40** 1,000 LB CAP. POSITIONER,  
S/N: 742170-1397  
SINGLE SIDED CANTILEVER RACKS  
(35) OXY/ACETYLENE GAS BOTTLES  
(8) PROPANE TANKS W/CABINET  
BABBIT/LEAD POTS W/BENCH & TABLE  
HYDRA-SET MODEL E 20 TON CAPACITY SCALE  
**CUSTOM BUILT** HYDRAULIC OPERATED HONE FOR  
CYLINDER REPAIR W/MANDRILS, 120"

**FOR DETAILS AND PHOTOS VISIT [MURPHYAUCTION.COM](http://MURPHYAUCTION.COM)**