

JG M NO MINIMUMS - NO RESERVES JG M

PUBLIC AUCTION



**BARTELS FARM EQUIPMENT &
PACKING FACILITY**

9:00 AM | TUESDAY - DECEMBER 11

Preview 8:00 AM to 4:00 PM | Monday, December 10

AUCTION TO BE SOLD BY PHOTO AT

706 Oscar Street, Eugene, OR 97402

THREE LOCATIONS

706 Oscar Street, Eugene, OR 97402

88091 Central Road, Eugene, OR 97402

1745 W. 5th Avenue, Eugene, OR 97402



**ONLINE
BIDDING
AVAILABLE**

MEAT PACKING, SLAUGHTERHOUSE & FARM EQUIPMENT



2014 MAREL I-CUT 55



2016 MULTIVAC R145



2016 EREY ULTRASOURCE F266



2016 LOMA IQ3+E



2014 IPAK TF300 S SERIES

James G. Murphy Co.
Commercial & Industrial Auctioneers



1.800.426.3008 - 425.486.1246

murphyauction.com

PUBLIC AUCTION

9AM - TUESDAY - DEC. 11

BARTELS FARM EQUIPMENT & PACKING FACILITY



WOLFING GRINDER



James G. Murphy Co.

Commercial & Industrial Auctioneers
P.O. Box 82160, Kenmore, WA 98028

PRESORTED
FIRST CLASS MAIL
U.S. POSTAGE
PAID
SEATTLE, WA
PERMIT NO. 963

**NO MINIMUMS • NO RESERVES
BID LIVE OR BID ONLINE**



James G. Murphy Co.

Commercial & Industrial Auctioneers

PUBLIC AUCTION

**BARTELS FARM EQUIPMENT &
PACKING FACILITY**

9:00 AM | TUESDAY - DECEMBER 11

Preview 8:00 AM to 4:00 PM | Monday, December 10

AUCTION TO BE SOLD BY PHOTO AT

706 Oscar Street, Eugene, OR 97402

THREE LOCATIONS

706 Oscar Street, Eugene, OR 97402

88091 Central Road, Eugene, OR 97402

1745 W. 5th Avenue, Eugene, OR 97402



**ONLINE
BIDDING
AVAILABLE**

MEAT PACKING, SLAUGHTERHOUSE & FARM EQUIPMENT

FOR MORE INFORMATION GO TO MURPHYAUCTION.COM • PHONE 425.486.1246

9AM - TUES - DEC 11



ITEMS LOCATED AT 706 OSCAR STREET, EUGENE, OR

2014 IPAK TF300 S SERIES AUTOMATIC TRAY FORMER, NORDSON 30 GLUER, S/N: 1505

2016 ULTRASOURCE BISON 20' ROLLSTOCK PACKAGING MACHINE W/(2) ULTRASOURCE MATRIX LABELERS, MATRIX CROSSWEB IMADE SMARTDATE X60

2016 MULTIVAC R145 THERMOFORMING PACKAGING MACHINE W/MULTIVAC ASE230, EXTENDED LOADING AREA, S/N: 228877

MULTIVAC R145 ROLLSTOCK THERMOFORMER PACKAGING LINE W/CONTROLS, S/N: 127826

2005 MULTIVAC R140 ROLLSTOCK THERMOFORMER PACKAGING LINE W/CONTROLS, S/N: 102846

2010 ROLLSTOCK RA-200 VACUUM PACKAGING LINE, E300 CONTROLS, S/N: 109400010

2009 KOCH DC-860FB-G DOUBLE CHAMBER VACUUM PACKING MACHINE W/AROMAX-VAC PNC-01 CONTROLS

MULTIVAC VACUUM SEALER 34"X34" DOUBLE CHAMBER VACUUM SEALER

2014 MAREL I-CUT 55 PORTION CUTTER, BONELESS MEAT PORTION CUTTER W/(3) LASERS, TOUCH SCREEN CONTROLS

2016 HANDTMANN VF620 VACUUM FILLER W/360 KG LIFTING ARM, LOMA IQ3+ METAL DETECTOR, PORTIONER, ATTACHMENTS & CONTROLS, S/N: 36615

2015 HANDTMANN 99-2 10" PORTIONER, S/N: 36301

2015 BIZERBA GLM-IEVO WEIGH PRICE LABELING SYSTEM W/LABELER, FEED, SCALE, PRINTER & CONTROLS, S/N: 11207398

(3) BIZERBA GLX 1.1 WEIGHT/LABEL LINES TO INCLUDE: CONVEYORS, LABELERS, SCALES, GLP PRINTERS & CONTROLS

WOLFKING GRINDER 2,000 LB MIXER/GRINDER W/GRINDING HEAD & ACCESSORIES

GRINDER 10" CHOPPER/GRINDER W/HOPPER

BUTCHER BOY FMG1100 BLOCK GRINDER W/HOPPER

2014 NUTEC/PROVATEC 745 PATTY FORMER W/PAPER ATTACHMENT & CONTROLS, S/N: 745.14.828

2016 NUTEC 754 PATTY FORMER, S/N: 745-16-845

2016 FREY ULTRASOURCE F266 VACUUM STUFFER, SELF LOADING ARM & ATTACHMENTS

(2) MARVEL 400 VERTICAL BANDSAWS

HOBART 5801 VERTICAL BANDSAW

(2) 2016 LOMA IQ3+E INLINE METAL DETECTORS

ADVANCED DETECTION SYSTEMS MAX II INLINE METAL DETECTOR, S/N: 720148

LOCK MET30+ INLINE METAL DETECTOR

2016 POLY-CLIP FCA80 AUTOMATIC DOUBLE CLIPPER ON CASTERS, S/N: 619-16

POLY-CLIP 3463 AUTOMATIC DOUBLE CLIPPER
PRAIRAIR 42", -200 DEGREES CONVEYOR BLAST FREEZER, LIQUID NITROGEN

2015 NUTEC 16" PERFORATING CONVEYOR
INCLINE CONVEYOR S/S SCREW CONVEYOR W/DRIVE ON CASTERS
TRANSFER CONVEYOR 18"X20' TRANSFER CONVEYOR W/DRIVE
FPEC 327SL 24" INCLINE CONVEYOR W/DRIVE ON CASTERS
INCLINE BELT CONVEYOR 16" S/S INCLINE BELT CONVEYOR
W/DRIVE & HOPPER ON CASTERS

NDC INFRALAB E SERIES MEAT ANALYZER
HOLAC DICER/CUBER W/SPARE BLADES

(2) BIRKO 22" AUTOMATED SPRAY TUNNELS

S/S TABLES CARTS, BINS, RACKS & SINKS

ULTRASONIC ULTRASHRINK 2818 18"X18" DIP TANK

3M 200A 3" CASE TAPER, S/N: 50156

S/S TABLES BINS & CARTS

S/S SINKS TABLES, BINS

S/S TABLES ASSORTED TABLES & BINS

PLATFORM SCALE 24"X28" PLATFORM SCALE W/IQ PLUS 355

DIGITAL READ OUT

HIGHLIGHT PREDATOR PALLET WRAPPING MACHINE, S/N: P1305E549

HIGHLIGHT PREDATOR PALLET WRAPPING MACHINE W/RAMP CONVEYOR FRAMES

MAX-PAK MP60HD15 VERTICAL BALER, S/N: 91512220

LANDA PE 4-3000 ELECTRIC PRESSURE WASHER

KONICA MINOLTA C280 BIZHUB PRINTER

RETAIL EQUIPMENT TO INCLUDE: (4) KOOL-IT DISPLAY COOLERS, (7) CHEST FREEZERS, SCALE, DISPLAYS & MISC.

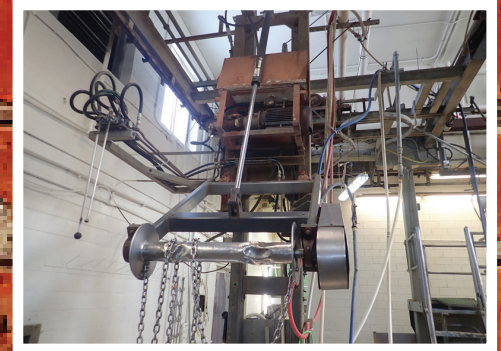
OFFICE EQUIPMENT TO INCLUDE: DESKS, COMPUTERS, TABLES, RECEPTIONS, TELEVISIONS & MISC. OFFICE EQUIPMENT



ONLINE BIDDING AVAILABLE

BID LIVE OR BID ONLINE

NO MINIMUMS - NO RESERVES



ITEMS LOCATED AT 88091 CENTRAL ROAD, EUGENE, OR
TEMPLE GRANDIN DESIGN HYDRAULIC SQUEEZE KNOCKING BOX, NUDGER, NECK TILT & HYDRAULIC DUMP
 OVERHEAD CHAIN & LIFT GANTRY RAIL, HOISTS & STEEL SUPPORTS
 HYDRAULIC HIDE PULLER W/PERSONAL LIFT
 HEAD WASH BOOTH
VERSA 60" MOVING S/S TABLE W/DRIVE & SANITATION STATION
 SPLITTING STATION TO INCLUDE: JARVIS BUSTER V HYDRAULIC SAW, PERSONAL LIFT, PLATFORM & SINK
 THERMAL WASH TUNNEL W/(36) SPRAY HEADS, 20 GALLON MIN.
JARVIS STIMULATOR
 CUSTOM LACTIC ACID SPRAY BOOTH
BUTCHER BOY 34" VERTICAL MEAT SAW
BONING TABLE W/30" TRANSFER CONVEYOR
 24" S/S WASTE CONVEYOR W/DRIVE & OVERHEAD SUPPORTS
 24" INCLINE CONVEYOR W/DRIVE & OVERHEAD SUPPORTS
 S/S SINKS TABLES, STANDS, FLOOR SCALE, CARTS & MATS
 RICE LAKE RAIL SCALE W/DIGITAL READ OUT
 KNIFE CART TABLES, GUARDS, APRONS
JARVIS WELLSAW 444 BONE SAW
2010 WEVER 533 SKINNER, S/N: 131
BIRO VERTICAL MEAT CUTTING SAW
 TRAY CARTS S/S TUBE, SINKS, SCALE & TABLE
 MEAT HOOKS CARTS & MISC
VERSA-MATIC DIAPHRAGM PUMP
2013 PARKER 103-25 25 HP STEAM BOILER, 1,075,000 BTU, 100 PSI, PROPANE, S/N: G1252
JARVIS 5009-22L2-B5891 30 HP VACUUM PUMP, S/N: 269208CVS-675
 7.5 HP HYDRAULIC UNIT
 HOLDING TANK VERTICAL MOUNT
SULLIVAN PALATEK 50DGHW 50 HP ROTARY SCREW AIR COMPRESSOR W/HORIZONTAL TANK, S/N: 1509010005
SULLIVAN PALATEK 25D4J 25 HP AIR COMPRESSOR W/HORIZONTAL TANK, S/N: 07J023
INGERSOLL RAND H2475DS 5 HP 2-STAGE AIR COMPRESSOR
2013 PARKER WH3000 3,000,000 BTU INDIRECT WATER HEATER, 125 PSI, PROPANE, S/N: 61522
(4) AO SMITH BTH-199-101 CYCLONE XI 230 GALLON HOT WATER HEATERS
(2) STORAGE TRAILERS INCLUDING SPARE PARTS, TOOLS, SAWS & ASSORTED EQUIPMENT
 FEEDER GATES, PANELS, WATER TANKS & MISC

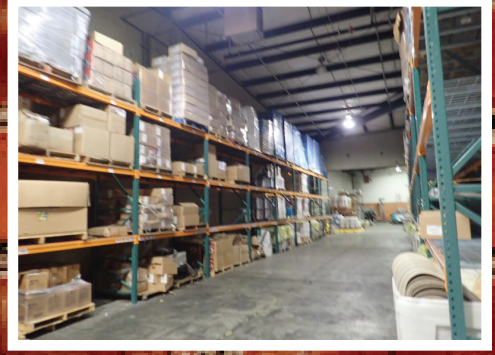
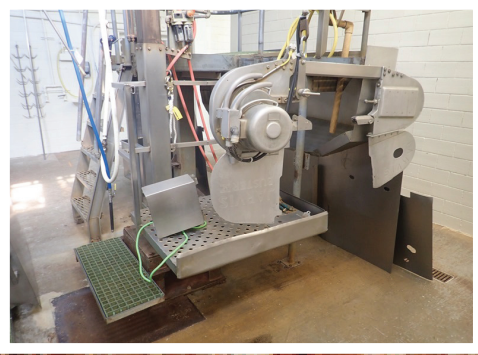
POWDER RIVER SQUEEZE CHUTE
2016 KWS 24" DIAMETER X 40' SCREW CONVEYOR
 TOTE DUMPER & ASSORTED EQUIPMENT
PEWE WATER FILTRATION SYSTEM TO INCLUDE: (3) 10,000 GALLON POLY TANKS, 7,500 GALLON SLUDGE TANK, 2015 PEWE LS-50 HD XLRATOR DAF CONTROL PANEL, S/N: 901141
 STAINLESS STEEL EQUIPMENT

ITEMS LOCATED AT 1745 W. 5TH AVENUE, EUGENE, OR
IPAK FS-200 CASE SEALER, S/N: 1555
VEMAG V500 STUFFER
2009 PROMAX PROVAC 880FB DOUBLE CHAMBER VACUUM PACKING MACHINE
(2) NUTEC 710 PATTY MACHINES
HIGHLIGHT PREDATOR PALLET WRAPPER
OLD RIVERS 8600-14E 7-HEAD OCTOPUS SEALER W/(3) UNUSED BUSCH RA0630 VACUUM PUMPS, S/N: G2480
 12' SCREW AUGER CONVEYOR W/HOPPER & DRIVE
2002 KOCH FP1500 MEC DRIVE PACKAGING MACHINE, S/N: FP4880
HOBART 1,500 LB MIXER/GRINDER
 ASSORTED EQUIPMENT TO INCLINE DIP TANK, DRIVES, REDUCERS & MISC
(39) SECTIONS OF PALLET RACKING
1999 ROSS TC700MC TENDERIZER, S/N: 1463FM
NUTEC PROVATOR 745 PATTY FORMER, S/N: 01-650
BUTCHER BOY 250/52 MIXER/GRINDER
(3) HIGHLIGHT MAGNUM 1300 CASE SEALERS
WEBER 20" SKINNER
BUTCHER BOY 36" VERTICAL MEAT CUTTING BANDSAW
LOMA INLINE METAL DETECTOR, S/N: KIMIT17843
CTM 360 INLINE LABELER
AEW 400 16" VERTICAL MEAT CUTTING BANDSAW
FPEC VL8 LIFT/DUMPER, S/N: 1437
WESTGLEN COBRA 16 16" VERTICAL MEAT CUTTING BANDSAW
 ASSORTED EQUIPMENT
2013 HANDTMANN FILLER/STUFFER, S/N: 990411
 DIP TANK FINGER BUGGERS, PARTS CLIPPER & MISC
 ACCUMULATOR TABLE 72" DIAMETER W/HOBART SLICER
ROSS TC700M TENDERIZER (MISSING NEEDLES), S/N: 4369EAMR
(2) VACUUM PACKERS W/DOUBLE CHAMBERS
NUTEC 745 PATTY FORMER (MISSING PARTS)



FOR MORE INFORMATION GO TO MURPHYAUCTION.COM • PHONE 425.486.1246

9AM - TUES - DEC 11



ROLLING STOCK - LOCATED AT OSCAR ST. & CENTRAL ROAD
2012 BOBCAT T750 TRACK MOUNTED LOADER, BUCKET, FORKS, AUX HYDRAULICS, S/N: ANKA12766
2007 BOBCAT T250 TRACK MOUNTED LOADER, AUX. HYDRAULICS, STABILIZERS, BUCKET, S/N: 531812872
1999 BOBCAT 863 SKIDSTEER LOADER, AUX. HYDRAULICS & STABILIZERS, S/N: 514427849
FORD TW35 MFWD TRACTOR, (2) REMOTES, PTO, CAB, DUAL REAR WHEELS
NUHN MAGNUM 4000 T/A MANURE TRAILER, S/N: 10247
H&S 430 T/A MANURE SPREADER
2010 HYSTER S60FT 4,750 LB CAP. HRT FORKLIFT, 3-STAGE MAST, SIDE SHIFT, AUX. HYDRAULICS, PROPANE, MONOTROL, HOUR METER READS: 9,042, S/N: F187V16408H
HYSTER E50Z-33 5,500 LB ELECTRIC FORKLIFT, S/N: G108N04796D
HYSTER H50FT 4,800 LB CAP. DUAL CUSHION TIRED FORKLIFT, 3-STAGE MAST, SIDE SHIFT, PROPANE, S/N: L177B09614D
YALE GLC050VXNVRE085 4,800 LB CAP. HRT FORKLIFT, 3-STAGE MAST, SIDE SHIFT, PROPANE, HOUR METER READS: 5,890, S/N: A910V14615G
CLARK MICHIGAN 55B WHEEL LOADER, S/N: 433C-199-CAC
1992 FREIGHTLINER T/A TRACTOR TRUCK, CUMMINS DIESEL, EATON FULLER 9 SPD TRANSMISSION, ODOMETER READS: 162,640
2000 FREIGHTLINER T/A SLEEPER TRACTOR TRUCK, DETROIT DIESEL, EATON FULLER 9 SPD TRANSMISSION, ODOMETER READS: 247,045
1998 FREIGHTLINER T/A SLEEPER TRACTOR TRUCK, DETROIT DIESEL, EATON FULLER 9 SPD TRANSMISSION,
1997 FREIGHTLINER FLD T/A SLEEPER TRACTOR TRUCK, DETROIT DIESEL, EATON FULLER 9 SPD TRANSMISSION, ODOMETER READS: 242,592
1986 INTERNATIONAL S1900 S/A FLATBED TRUCK
1998 GMC 6500 S/A DUMP TRUCK, ODOMETER READS: 84,6968
1976 WESTERN STAR T/A DUMP TRUCK
1985 INTERNATIONAL S1900 S/A REFRIGERATED BOX VAN, ODOMETER READS: 220,967
FREIGHTLINER FL70 S/A REFRIGERATED BOX VAN, ODOMETER READS: 618,989
6,000 GALLON T/A TANK TRAILER
1997 FEATHERLITE 8120 T/A STOCK TRAILER
MERRITT T/A STOCK TRAILER
MERRITT SPLIT AXLE STOCK TRAILER

GREAT DANE 53' STORAGE TRAILER
(5) 53' T/A STORAGE TRAILERS
28' T/A STORAGE TRAILER
INGERSOLL RAND 811 BACKHOE ATTACHMENT, S/N: 630002674
BOBCAT 8811 BACKHOE ATTACHMENT
CROWN FC400 ELECTRIC FORKLIFT
(2) HYSTER W45Z-HD 4,500 LB CAPACITY ELECTRIC PALLET JACKS
(2) CROWN WP 3035-45 ELECTRIC PALLET JACKS
AND MUCH MORE!!!

MURPHYAUCTION.COM
4 2 5 - 4 8 6 - 1 2 4 6

TERMS AND CONDITIONS

10% BUYERS PREMIUM ON ALL ITEMS
15% BUYERS PREMIUM ON ALL ONLINE PURCHASES

DUE TO INSURANCE AND SAFETY REASONS, CHILDREN UNDER 12 CANNOT BE ADMITTED

PAYMENT: FULL PAYMENT MUST BE MADE BY THE CLOSE OF BUSINESS AUCTION DAY. CASH, CASHIERS CHECK, WIRE TRANSFER, MASTERCARD OR VISA ONLY. CHECKS ARE ACCEPTED ONLY WITH BANK LETTER OF GUARANTEE.

REMOVAL: CUSTOMERS ARE RESPONSIBLE FOR REMOVING THEIR ITEMS FROM THE AUCTION SITE. NO PURCHASES MAY BE REMOVED DURING THE AUCTION UNLESS ANNOUNCED BY THE AUCTIONEER. NO PURCHASES MAY BE REMOVED UNTIL ALL PURCHASES ARE PAID FOR. ALL ITEMS MUST BE REMOVED BY 4:00 PM, WEDNESDAY, DECEMBER 19TH.

REMOVAL HOURS: ONE HOUR AFTER THE AUCTION OR BETWEEN 8:00 AM - 4:00 PM, WEDNESDAY, DECEMBER 12TH AND WEDNESDAY, DECEMBER 19TH. NO WEEKEND OR HOLIDAY REMOVAL.

COMPLETE TERMS AND CONDITIONS OF SALE WILL BE AVAILABLE AT THE TIME OF SALE. FOR COMPLETE RULES REGARDING ABSENTEE BIDS CALL OUR OFFICE OR INQUIRE AT THE AUCTION SITE.

BID LIVE OR BID ONLINE