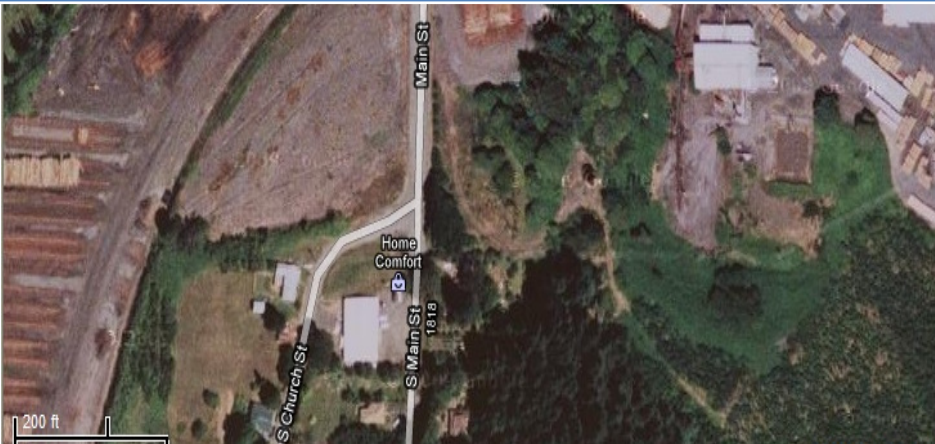


# Dallas Lumber Mill Equipment



Northwest Demolition & Dismantling  
in conjunction with James G. Murphy Co.



## **MILL EQUIPMENT AND LAYOUT**

The Dallas lumber mill is site approximately 154 acres and is comprised of the following equipment.

### **Yard Layout**

Log Yard is approximately 40 acres with 5 paved acres for truck unloading and scaling Paved

Rough Lumber Yard is approximately 15 acres

Paved finished goods storage yard is approximately 20 acres

### **Sawmill Equipment**

1- 35" Nicolson ring debarker

72" USNR bucking system with Inovec controlled length and diameter scanning system

USNR slant single cut headrig with 4 knee carriage, slabber head & Inovec scanning optimization

1 - twin horizontal re-saw with Concept Systems Controls

1 - USNR board edger with Newnes Optimization

1- 12" McGhee horizontal double arbor curve saw gang

1- 4" TMT 4 Saw board edger with Perceptron Optimization

1- Newnes Optimized trimmer with 12 Smart gates for additional re-manning

1- 40 bin J bar sorter

USNR alternating layer lumber stacker

1 - BM&M 8 X 12 chip Screen

1 - BM&M 7 X 16 Sawdust Screen

1 - Acrowood 2120 Slant Chipper

1 - Acrowood Main Chipper (2 -300 HP. 1180 RPM motors)

2 - Air Compressors (1 Quincy 1500 CFM 1 Sullair Model 32 - 100 L)

1 - Air Dryer Ingersoll Rand

### **Planermill Equipment**

32 knife Woods planer

Stainless steel in-line anti sap stain sprayer with excellent support room

2 Station mechanical board turning grading system

USNR singulating lug loader

Irvington - Moore Model 6620 optimized trimmer

Ink Jet grade stamper

29 Bin Irvington - Moore pusher lug sorter with over the top bi-pass

Coe/Newnes/McGehee stacker

Auto lathe placer

Two finished goods banders and end presses

Automatic finished goods label printer

Log Infeed Decks, 5 Strand, W132



Nicholson 6 Arm, 35" Ring Debarker



Jeffrey WB58 Hog, SN 11671 with 400 HP 1185, 460V Toshiba Motor



Precision 25 X 25 Feeder



Quadrant Feeder



72" USNR Bucking System



Galifco 5 Ton Overhead Bridge Crane



CME 24" Slant single cut headrig with 4 knee carriage, slabber head  
Inovec scanning optimization, Letson Burpee single Cut LH Bandmill



Twin horizontal re-saw with Concept System Controls



Newnes Optimized Scanner



12" McGhee horizontal double arbor curve saw gang



4TAE, 4" Timber Machine Tech, 4 Saw board edger with Perceptron Optimization



USNR 6TAX36 S/N3234 Edger





Two (2) chip-n-canter heads



Newnes Optimized Trimmer TA-24-RH-156 with adjustable trim fence, 12 Smart gates for additional re-manning





40 bin J Bar Drop Pocket Sorter





Stacker



BM&M 7 X 16-2D Shaker Screen s/n 15839



BM&M Shaker Screen 8 X 14-3 DCF s/n 15218



Dust Collection System



5 – 30 Unit chip bins



## Planer Mill



## Lumber breakdown to planer mill



## Decline lumber transfer to unscrambler



Lumber drop out gate



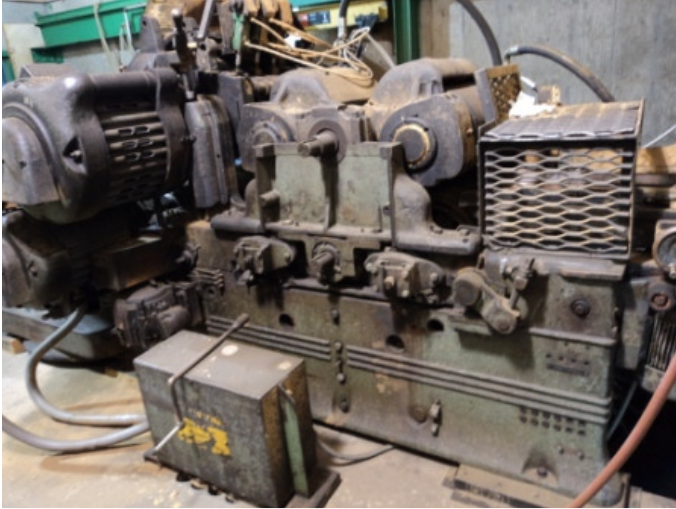
6 strand 78 chain lumber transfer



Dual head pineapple feeder & infeed to planer



409M1 Woods 6 X 15 Planer, s/n 33661, updated with newer hydraulic drives



Spray technologies spray booth





Slow down belt conveyors



Lumber landing table



Incline lumber transfer



Decline lumber transfer



Optimized lug feed transfer



Newnes McGehee Model 01034 Scanner



Irvington-Moore Model 6620 Optimized Trimmer



Infeed/Outfeed 29 Bin J Bar drop pocket sorter





Coe/Newnes/McGehee stacker



Signode M22-MP44 Strapper with bunk placer



Acme Strapper



Black Clawson 66" 8 knife Chipper s/n 4094



West Salem Machine 2420BR Hog with WSM HD8OD Shaker Screen



**CONTACT INFORMATION:**

**Northwest Demolition & Dismantling**

Richard Wayper, 503.638.6900, email: richard@nwdemolition.com

Brian H. Smith, 503. 638.6900, email: brian@nwdemolition.com

**James G. Murphy Co**

Andy Taylor, 503.463.4444, 425.486.1246, email: tifni@murphyauction.com

Bob Jones, 503.730.1564 (cell)

**PROTOCOL FOR SITE VISITS:**

1. All parties leave their vehicles at the gate and walk the site
2. Everyone signs in and signs out at the log book in the office
3. Safety gear is worn: (closed toe shoes, hard-hats and reflective vests)
4. A representative from James G. Murphy Co and/or Northwest Demolition is onsite to either escort them or at least make sure they have everything they need.

**TERMS & CONDITIONS**

**WARRANTY DISCLAIMER:** All Sales Are Final. All items are being sold “As Is, Where Is”, with all faults and without any warranties as to merchantability of fitness for a particular purpose. The principal, the auction company, and any of their agents make no express or implied warranties of any type.

Due to safety & insurance reasons, persons under 12 not admitted.

Payment information and removal schedule to be arranged.