

# NO MINIMUMS - NO RESERVES HEAVY EQUIPMENT & PARTY RENTALS



(12) 2003 - 2017 TRAILER MOUNTED AIR COMPRESSORS & (2) LIGHT TOWERS



2007 JLG 1930ES



2018 JLG 1930ES



2008 JLG 1930ES



2008 JLG 1930ES



2011 JLG 1930ES



2011 JLG 660SJ



2001 JLG 660SJ



2011 SNORKEL UN041



2001 CHARMAC



2005 FOREST RIVER



2018 JLG T500J



2012 JLG T500J

## TERMS AND CONDITIONS

13% BUYERS PREMIUM ON ALL PURCHASES

**PAYMENT:** FULL PAYMENT MUST BE MADE BY 5 PM, WEDNESDAY, OCTOBER 6. PAYMENT MUST BE MADE BY ONLINE CREDIT CARD OR WIRE TRANSFER ONLY. AFTER THE AUCTION CLOSING & YOU RECEIVE YOUR EMAILED INVOICE, PLEASE REPLY AND WE WILL CHARGE YOUR CARD ON FILE. TO PAY ONLINE GO TO [MURPHYAUCTION.COM/MAKEPAYMENT](http://MURPHYAUCTION.COM/MAKEPAYMENT).

**REMOVAL:** CUSTOMERS ARE RESPONSIBLE FOR REMOVING THEIR ITEMS FROM THE AUCTION SITE. ALL ITEMS MUST BE REMOVED NO LATER THAN 4:00 PM FRIDAY, OCTOBER 15TH.

**REMOVAL HOURS:** 8:00 AM - 4:00 PM, THURSDAY, OCTOBER 7TH THROUGH FRIDAY OCTOBER 15TH.  
NO WEEKEND REMOVAL.

**WARRANTY DISCLAIMER:** ALL SALES ARE FINAL. ALL ITEMS ARE BEING SOLD "AS IS, WHERE IS," WITH ALL FAULTS AND WITHOUT ANY WARRANTIES AS TO MERCHANTABILITY OF FITNESS FOR A PARTICULAR PURPOSE. THE PRINCIPAL/SELLER, THE AUCTIONEER, THE ADVERTISING COORDINATOR, AND ANY OF THEIR AGENTS MAKE NO EXPRESS OR IMPLIED WARRANTIES OF ANY TYPE. COMPLETE TERMS AND CONDITIONS OF SALE WILL BE AVAILABLE AT THE TIME OF SALE.



**START DATE: 9:00 AM | WEDNESDAY - SEPTEMBER 29**

**END DATE: 9:00 AM | WEDNESDAY - OCTOBER 6**

**476 HRS**



**2019 KUBOTA KX040-4**



**James G. Murphy Co.**

Commercial & Industrial Auctioneers  
P.O. Box 82160, Kenmore, WA 98028

PRESORTED  
FIRST CLASS MAIL  
U.S. POSTAGE  
PAID  
SEATTLE, WA  
PERMIT NO. 963



**REGISTER  
TO BID @  
MURPHYAUCTION.COM**



**James G. Murphy Co.**

Commercial & Industrial Auctioneers



**PUBLIC ONLINE AUCTION**

**SUN RENTAL CENTER**

**HEAVY EQUIPMENT & PARTY RENTAL**

**Start Date: 9:00 AM | Wednesday - September 29**

**End Date: 9:00 AM | Wednesday - October 6**

**Preview: 8AM - 4PM | Tuesday, October 5**

**1105 SE Latah St, Pullman, WA 99163**

***Retiring After 45 Years in Business***

**1.800.426.3008 - 425.486.1246 - murphyauction.com**





**PUBLIC ONLINE AUCTION**  
**SUN RENTAL CENTER**  
**HEAVY EQUIPMENT & PARTY RENTAL**



**Start Date: 9:00 AM | Wednesday - September 29**  
**End Date: 9:00 AM | Wednesday - October 6**  
**Preview: 8AM to 4PM | Tuesday - October 5**  
**Location: 1105 SE Latah St, Pullman, WA 99163**



**365 HRS**  
**PILOT CONTROL**



2019 JOHN DEERE 318G

**806 HRS**  
**PILOT CONTROL**



2017 JOHN DEERE 323E

**3,871 HRS**  
**PILOT CONTROL**



2007 CASE 580M SERIES II

**505 HRS**



2018 JLG 260MRT

**194,265**  
**MILES**



1974 KENWORTH W925

**23,000**  
**MILES**



2018 DODGE RAM 2500

**46,000**  
**MILES**



2012 DODGE RAM 3500



2001 TRAILZEZE DHT7048

**400 HRS**



2019 JLG 340AL

**2,601 HRS**



2006 JLG G9-43A

**4,485 HRS**



2003 JLG G9-43A

**Retiring After 45 Years in Business**



# NO MINIMUMS - NO RESERVES

1,629 HRS



2016 KUBOTA KX040-4

1,924 HRS



2014 KUBOTA KX91-3SS

1,000 HRS



2018 KUBOTA KX033-4

2,200 HRS



2009 KUBOTA KX41-3B-3

1,250 HRS



2015 KUBOTA KX018-4

711 HRS



2017 KUBOTA L3301D

1,439 HRS



2005 DITCH WITCH RT40

69 HRS



2020 TORO TRX250

332 HRS



2018 BOBCAT MT85



2014 BOBCAT MT55



2007 BOBCAT MT55



(2) BARRETO

19 HRS



2020 TORO MBTX250

2,337 HRS



2007 CASE 430

127 HRS



2007 CASE 420

5,836 HRS



1994 GRADALL 534C-6

198 HRS



2017 TOYOTA 8FGU25

2,200 HRS



1994 CASE 586E



(2) BOMAG BMP8500

2,495 HRS



2008 JLG G5-18A



# PUBLIC ONLINE AUCTION - PULLMAN, WA



2004 DODGE RAM 3500



2004 MITSUBISHI FE HD



2006 CHEV 1500



COMET 28'



2020 TOWMASTER T-12DT



2016 TOWMASTER T-12DT



2016 TOWMASTER



(2) 2005 TOWMASTER T-12DT



2018 PJ



2012 C&B



2005 C&B



2012 PJ 6202



2017 KAUFMAN



2003 BILJAX ET500W



2012 PJ T8222



2019 REDI HAUL RH2001



ASSORTED DIGGING BUCKETS



ASSORTMENT OF PARTS



BILJAX SCAFFOLDING



LINCOLN 305G



# NO MINIMUMS - NO RESERVES

## ROLLING STOCK/HEAVY EQUIPMENT:

2017 KUBOTA KX040-4 MINI EXCAVATOR  
 1990 CHEV 1500 PICKUP  
 2018 JLG 2646ES ELECTRIC SCISSOR LIFT  
 2018 JLG 2632 ES ELECTRIC SCISSOR LIFT

## PORTABLE AIR COMPRESSORS & LIGHT TOWERS:

2017 SULLIVAN P185 PORTABLE AIR COMPRESSOR  
 (2) 2013 DOOSAN P185 PORTABLE AIR COMPRESSORS  
 (4) 2010 INGERSOLL RAND P185 PORTABLE AIR COMPRESSORS  
 2010 INGERSOLL RAND P185 PORTABLE AIR COMPRESSOR  
 (2) 2008 INGERSOLL RAND P185 PORTABLE AIR COMPRESSORS  
 2003 INGERSOLL RAND P185 PORTABLE AIR COMPRESSOR  
 DOOSAN P185 PORTABLE AIR COMPRESSOR  
 (2) 2003 INGERSOLL RAND LIGHT SOURCE PORTABLE LIGHT TOWERS

## TRAILERS:

2017 KAUFMAN 5 TON T/A TILTBED EQUIPMENT TRAILER  
 (2) 2016 TOWMASTER 14' S/A EQUIPMENT TRAILERS  
 2012 PJ T8222 T/A TILTBED DECK OVER TRAILER  
 2010 REDI HAUL RH2001 S/A TILTBED EQUIPMENT TRAILER  
 (2) 1998 WACKER S/A TILTBED EQUIPMENT TRAILERS  
 1998 TOWMASTER T-10P T/A EQUIPMENT TRAILER  
 1997 TOWMASTER T-12DT 6 TON T/A TILTBED EQUIPMENT TRAILER  
 1991 DITCH WITCH S1A S/A TILTBED EQUIPMENT TRAILER  
 DITCH WITCH 6' S/A EQUIPMENT TRAILER  
 UTILITY 27' S/A VAN TRAILER  
 COMET 27' S/A VAN TRAILER  
 TRAILMOBILE 27' S/A VAN TRAILER  
 2004 INTERSTATE 6' X 10' S/A CARGO TRAILER  
 BARRETO UTILITY TRAILER  
 BOBCAT UTILITY TRAILER  
 (2) CAR DOLLYS

## ATTACHMENTS:

OKADA HYDRAULIC HAMMER TO FIT CASE 580M, STANLEY MB05 Q/C HYDRAULIC HAMMER, BOBCAT 48SCM Q/C SOIL CONDITIONER, Q/C BROOM ATTACHMENT, PALADIN X1475 Q/C AUGER HEAD, Q/C AUGER HEAD, Q/C BUCKET, 9" - 36" AUGERS, AMULET Q/C 43" POWER TILT BUCKET, JENKINS Q/C 74" GRAPPLE BUCKET, GRADALL Q/C LOADER BUCKET, LAND PRIDE Q/C ANGLE BLADE, MIDSOTA Q/C 78" BUCKET, JLG Q/C 73" BUCKET, Q/C 72" BUCKET, Q/C FORKS, Q/C 64" BUCKET, 72" ANGLE BLADE, (3) SKIDSTEER BUCKETS, GANNON 12" BACKHOE BUCKET TO FIT CASE 580M SERIES II, (8) Q/C MINI EXCAVATOR BUCKETS, GRADALL Q/C TRUSS JIB, LAND PRIDE RCR1548 3 PT MOWER, LAND PRIDE 61" BOX SCRAPER, LAND PRIDE 3 PT RAKE, 3 PT BLADE, DRAG RAKE, SPARE PARTS, MISC.

## LAWN EQUIPMENT:

(2) BILLY GOAT HIGH GRASS MOWERS  
 (3) BARRETO 1320 ROTOTILLERS W/TRAILERS  
 BILLY GOAT AERATOR  
 (2) IRON & OAK 30 TON LOG SPLITTERS  
 DOSKO 4" CHIPPER WITH S/A TRAILER  
 RICE 1 MAN POWER AUGER  
 (4) LITTLE BEAVER POWER AUGER UNITS  
 (10) ROTOTILLERS, (4) PUSH MOWERS, (8) THATCHERS,  
 (5) SOD CUTTERS, (5) AERATORS, 9" BED SCULPTER, EDGER,  
 BLOWER, 14' X 20' PORTABLE LATTICE CONVEYOR, (2) STUMP GRINDERS, (2) HEDGERS

## CONSTRUCTION EQUIPMENT:

BOMAG MW60HG TRENCH ROLLER  
 (4) BOMAG PLATE COMPACTORS  
 (4) BOMAG JUMPING JACKS  
 TRANSCUBE FUEL TANK W/PUMP, HOSE, DISPENSER  
 LINCOLN 305G WELDER  
 MI-T-M HOT WATER WASHER  
 (2) BARTELL 36" POWER TROWELS  
 (3) MAKITA HOT SAWS  
 LINCOLN WIRE FEED  
 (4) SUMNER MATERIAL LIFTS  
 (2) 8' X 10' CONTAINERS  
 (3) 8' X 20' CONTAINERS  
 PALLET JACK



ASSORTED INFLATABLES



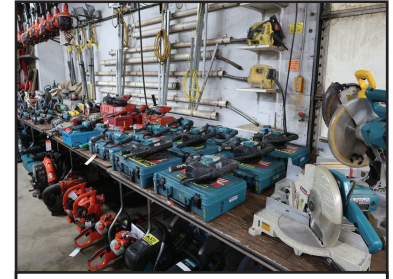
ASSORTED TABLES



ASSORTED CHAIRS

## PARTY EQUIPMENT:

UTILITY CART  
 INFLATABLE FUN HOUSES  
 20' X 30' X 7' CANOPY  
 TENTS & AWNINGS  
 TENT & AWNING POLES & STAKES  
 TENT & AWNING PARTS  
 TENT & AWNING SUPPLIES  
 (35) 55 GALLON TENT ANCHORS  
 PORTABLE STAGE  
 (20) 4' X 4' PANELS  
 STAIRS  
 STAGE LIGHTING  
 TENT LIGHTS, DRAPES  
 PORCORN & COTTON CANDY MACHINES  
 PROPANE BBQ'S  
 PATIO HEATERS  
 PARTY SUPPLIES  
 TABLE CLOTHS, NAPKINS, SUPPLIES  
 CHAFFING PANS, COOLERS, COFFEE POTS, SILVERWARE  
 GLASSWARE, TABLE SKIRTS  
 TABLE SKIRTING  
 PORTABLE BAR  
 APPROX (100) RECTANGLE TABLES  
 APPROX (40) ROUND TABLES  
 APPROX (250) CHAIRS  
 APPROX (80) PLASTIC FOLDING CHAIRS  
 APPROX. (225) WOOD FOLDING CHAIRS  
 APPROX. (600) METAL FOLDING CHAIRS



ASSORTED POWER TOOLS

## UNUSED RETAIL EQUIPMENT:

MI-T-M HOT WATER WASHER, TRASH PUMP, MAKITA ELECTRIC HAMMER, ECHO CHAIN SAWS, BLOWERS, HEDGERS, MAKITA MM4 HOT SAW, ROTOHAMMER BITS, BLADES, FASTENERS, ECHO LINE TRIMMERS, ECHO CHAINSAWS, HONDA ENGINES, RECEIVERS, BALLS, SAFETY EQUIPMENT, (3) SUBMERSIBLE PUMPS, OIL & LUBRICANTS, SAFETY PPE'S.



**REGISTER  
 TO BID @**  
**MURPHYAUCTION.COM**



James G. Murphy Co  
 425.486.1246  
 murphyauction.com