



# PUBLIC ONLINE AUCTION



# R-Y TIMBER, INC.

Sawmill

Start Date: 11:00 AM | Thursday - June 16

End Date: 11:00 AM | Thursday - June 23

Preview 8:00 AM to 4:00 PM | Wednesday, June 22

Location: 85 Mill Road, Townsend, MT 59644

(1 OF 2)



**KOCKUMS 24" CAMBIO  
(CONVERTED TO 26" BY LINDSAY)  
5-ARM RING DEBARKER**



**ARMSTRONG SUPER DUTY  
BANDSAW AUTO LEVELER**



**COASTAL  
6"X13" PLANER**

LOCATED IN LIVINGSTON, MT



**CAT 988B**

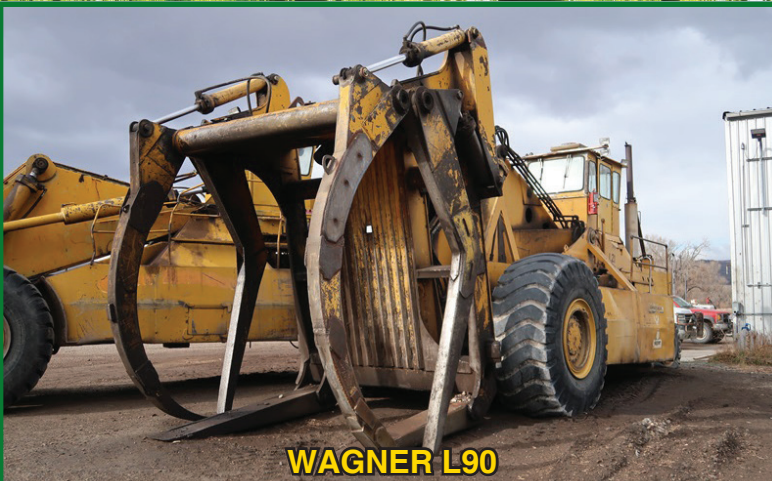
(1 OF 2)



**KOCKUMS  
8'X8' 2-DECK CHIP SCREEN**



**(2) PEERLESS  
APPROX. 21-UNIT HYDRAULIC  
OPERATED CHIP BINS**



**WAGNER L90**



**KOCKUMS 5' SINGLE HORIZONTAL BAND RESAW**

# R-Y TIMBER, INC.

(2 OF 2)



**KOCKUMS 24" CAMBIO  
(CONVERTED TO 26" BY LINDSAY)  
5-ARM RING DEBARKER**

(1 OF 2)



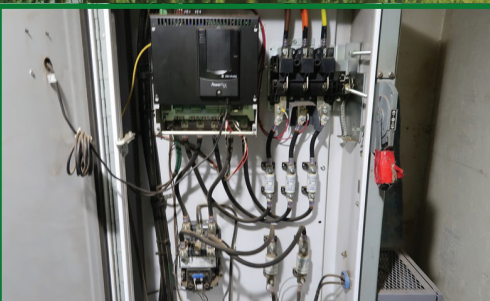
**MDI TWA2000  
.38"X47" WHOLE LOG METAL DETECTOR**



**DIAMOND  
DOUBLE COLUMN 8' RH HEAD RIG BANDMILL**



**2018 USNR MILL EXPERT  
G3 CHROMASCAN 2460**



**2018 USNR  
CARRIAGE DRIVE UPGRADE**

## **DEBARKERS:**

**KOCKUMS 24"** (CONVERTED TO 26" BY LINDSAY) CAMBIO 5-ARM RING DEBARKER W/AIR RING, 75 HP/1,200 RPM RING DRIVE MOTOR, HYDRAULIC DRIVEN, (3) INFEED & (3) OUTFEED SPIKE ROLLS, LINDSAY L7500 14' SELF-LEVELING INFEED LOG HAUL, (2) POWERED OUTFEED ROLLS, APPROX. 20' OUTFEED LOG HAUL W/DRIVE, 30 HP HYDRAULIC UNIT, CONTROLS & ELECTRICS, SUPPORT EQUIPMENT, SPARE PARTS, SPARE 26" RING, S/N: 770117

**KOCKUMS 24"** (CONVERTED TO 26" BY LINDSAY) CAMBIO 5-ARM RING DEBARKER W/AIR RING, 75 HP/1,200 RPM RING DRIVE MOTOR, HYDRAULIC DRIVEN, (3) INFEED & (3) OUTFEED SPIKE ROLLS W/SK 15 HP GEARHEAD MOTOR, APPROX. 18' SELF-LEVELING INFEED LOG HAUL, (2) OUTFEED ROLLS W/SM CYCLO GEARHEAD MOTOR, CONTROLS & ELECTRICS, SUPPORT EQUIPMENT, SPARE PARTS, SPARE 26" RING, S/N: 78-132

**MORBARK NW16** ROSSERHEAD DEBARKER, 42" MAX. DIA. W/(2) APPROX. 10" WIDE TOP CUTTER HEADS & SINGLE APPROX. 14" BOTTOM CUTTER HEAD W/DRIVE MOTORS, APPROX. 80" HYDRAULIC DRIVEN FEED THRU ROLLCASE W/2-ARM LOG KICKER, (2) LOG STOPS, 75 HP HYDRAULIC UNIT, CONTROLS & ELECTRICS, S/N: 20

## **CUT OFF SAWS:**

60" INSERT TOOTH WHOLE LOG CUT OFF SAW W/TOSHIBA 50 HP MOTOR, LOG CLAMP, APPROX. 60' 6"X11-1/2" BOX CHAIN LOG HAUL, S-DRIVE W/SK GEARHEAD MOTOR, (2) LOG STOPS, HOLD DOWN & FEED ROLL, 40 HP HYDRAULIC UNIT, (3) SPARE SAWS  
60" INSERT TOOTH WHOLE LOG CUT OFF SAW W/TECO 40 HP MOTOR, LOG CLAMP, APPROX. 24' 6"X11-1/2" BOX CHAIN LOG HAUL, S-DRIVE W/SK 5 HP/45 RPM GEARHEAD MOTOR, (2) LOG STOPS, (3) SPARE SAWS  
**L&M STYLE 7' BAR TYPE WHOLE LOG CUT OFF SAW, (2) SPARE BARS & CHAINS**

## **WHOLE LOG METAL DETECTORS:**

**MDI TWA2000 .38"X47"** WHOLE LOG METAL DETECTOR W/APPROX. 32"X12' FEED THRU BELT W/SM CYCLONE GEARHEAD MOTOR, MDI CR-85 2000 DIGITAL CONTROL CHASSIS, S/N: DG-10185

**MDI TWA2000 .38"X47"** WHOLE LOG METAL DETECTOR W/APPROX. 32"X12' FEED THRU BELT W/DRIVE, MDI SERIES 2000 CHASSIS, CR-85, S/N: M-0114

## **LOG DECKS & LOG HAULS:**

APPROX. 38' 8-STRAND 2-SECTION H-CHAIN INFEED LOG DECK W/SPLIT S-DRIVES, 8-ARM LS&L, (2) MOTOR TO REDUCER DRIVES, NUMEROUS LOG TRANSFERS  
APPROX. 38' 4-STRAND H-CHAIN INFEED LOG DECK W/5-ARM LS&L, S-DRIVE, MOTOR TO REX ATLAS REDUCER  
NUMEROUS BOX CHAIN LOG HAULS TO 60'

## **HEAD RIG - CARRIAGE - STEP FEEDER:**

**DIAMOND DOUBLE COLUMN 8' RH HEAD RIG BANDMILL**, MOTORIZED GUIDE, MECHANICAL STRAIN, RELIANCE 200 HP/896 RPM/460V MOTOR, OUTFEED ROLLCASE, SUPPORT EQUIPMENT, UNUSED SPARE MOTOR, SPARE SAWS  
CUSTOM BUILT CARRIAGE, 9' X APPROX. 42" MAX. DIA. W/(2) TEMPOSONIC POSITIONED KNEES W/LOG DOGS, PANTOGRAPH, RAIL, BUMPERS, CONTROLS & ELECTRICS, SUPPORT EQUIPMENT, SPARE PARTS

**2018 USNR MILL EXPERT G3 CHROMASCAN 2460** UPGRADE TO EXISTING INOVEC OPTIMIZER W/(3) SCAN HEADS, SHARED SERVERS

**2018 USNR CARRIAGE DRIVE UPGRADE** W/ALLEN BRADLEY 75 HP DC DRIVE MODEL 20P41AB265RA0NN W/ALLEN BRADLEY COMPACT LOGIX L23E PLC, HMI TOUCHSCREEN, SHARED SERVERS, ORIGINAL GE 75 HP/650-2,000 RPM/240V DC CARRIAGE DRIVE MOTOR TO FALK STYLE REDUCER  
APPROX. 9'X36' 10-STEP HYDRAULIC OPERATED STEP FEEDER W/2-ARM LS&L, CHAIN TYPE LOG TURNER, 75 HP HYDRAULIC UNIT

## **TIMBER SIZER:**

**ADCO WEST VSLM TIMBER SIZER** W/KEY KNIFE CONVERSION, (2) 100 HP 12-KNIFE SIDE HEADS, (1) 50 HP 4-KNIFE BOTTOM HEAD, (1) 50 HP 8-KNIFE TOP CHIPPING HEAD, (1) 60 HP SPLINED VERTICAL SAW ASSEMBLY, INFEED PROTRUSION HEAD, FEED THRU & HOLD DOWN SYSTEM, CONTROLS & ELECTRICS, SPARE SAWS, S/N: 01048

## **RESAWS:**

**KOCKUMS 5'** SINGLE HORIZONTAL BAND RESAW W/200 HP/1,185 RPM MOTOR, AIR STRAIN, 24" CHROMED KNURLED THRU ROLLS W/11" TOP FEED ROLLS, INFEED BELT, OUTFEED ROLLCASE, ALL DRIVES, CONTROLS & ELECTRICS, SUPPORT EQUIPMENT, SPARE SAWS

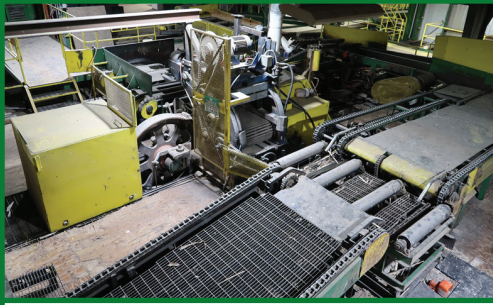
**LETSON BURPEE 5'** SINGLE HORIZONTAL BAND RESAW W/150 HP/1,185 RPM MOTOR, MECHANICAL STRAIN, 28" FEED THRU SLAT CHAIN, CONTROLS & ELECTRICS, SUPPORT EQUIPMENT, SPARE SAWS



James G. Murphy Co.  
murphyauction.com  
425.486.1246



# NO MINIMUMS - NO RESERVES



**LETSON BURPEE**  
5' SINGLE HORIZONTAL BAND RESAW



**SCHURMAN**  
8"X66" SPLINED BOTTOM  
ARBOR GANG EDGER



**(2) SIMPLE SIMON STYLE**  
STUD STACKERS



**9' 2-ARM X 110" HYDRAULIC**  
OPERATED TILT HOIST



**KOCKUMS 58**  
58" 8-KNIFE CHIPPER

## **OPTIMIZED EDGERS - RECOVERY EDGER:**

**SCHURMAN** 8"X66" SPLINED BOTTOM ARBOR GANG EDGER W/(2) 250 HP ARBOR DRIVE MOTORS, REVERSE SAW ROTATION, CHROMED KNURLED FEED THRU ROLLS W/SKK GEARHEAD MOTOR, CLAMSHELL OPENING, HOLD DOWNS, TMT TEMPOSONIC POSITIONED FEED TABLE W/SHARP CHAIN, INOVEC 9' WANEMASTER EDGER OPTIMIZER W/(4) DYNAVISION M6-17-12 & 12C SCAN HEADS, ALLEN BRADLEY LOGIX 5561 PLC W/(9) CARDS, CONTROLS & ELECTRICS, SUPPORT EQUIPMENT, SPARE PARTS & SAWS  
**2001 TMT** 4"X30" SPLINED TOP ARBOR BOARD EDGER, 2-SAW TEMPOSONIC POSITIONED NETWORKS, APPROX. 250 HP ARBOR DRIVE MOTOR, TMT TEMPOSONIC POSITIONED FEED TABLE W/SHARP CHAIN, 36"X13' EDGER PICKING OUTFEED BELT W/SKK 3 HP/45 RPM GEARHEAD MOTOR, 2002 INOVEC 9' WANEMASTER EDGER OPTIMIZER W/(4) DYNAVISION M6-17-12 & 12C SCAN HEADS, SWING ARM CONTROLS, ALLEN BRADLEY LOGIX 5550 PLC W/(10) CARDS, CONTROLS & ELECTRICS, SUPPORT EQUIPMENT, SPARE PARTS & SAWS, S/N: 5104  
**SALEM** APPROX. 1"X4" RECOVERY EDGER, SPLINED BOTTOM ARBOR W/APPROX. 25 HP MOTOR, INFEED ROLLCASE W/MOVABLE FENCE, OUTFEED BELT, CONTROLS & ELECTRICS, S/N: 117385

## **STACKERS:**

**(2) SIMPLE SIMON STYLE** STUD STACKERS W/2-ARM FORK PLACERS, SINGLE STATION STICK PLACER, 2-ARM X 109" LUMBER LOWERING HOIST, ALL INFEED TRANSFERS, OUTFEED ROLLCASE, 30 HP SHARED HYDRAULIC UNIT, CONTROLS & ELECTRICS  
CUSTOM BUILT 8' OVER END HYDRAULIC OPERATED STACKER W/(2) STICKER MAGAZINES, 2-STRAND IN & OUTFEEDS W/END TAMPERS, LUMBER STAMPING STATION (PLANER MILL)

## **PLANER:**

**COASTAL** 6"X13" PLANER, (4) HEADS, (14) KNIVES, APPROX. 100 HP TOP, 50 HP BOTTOM & 30 HP SIDE HEADS, (4) INFEED & (2) OUTFEED HYDRAULIC DRIVEN FEED ROLLS, COASTAL 9' HYDRAULIC DRIVEN SINGLE PINEAPPLE FEED TABLE W/SPEED UP ROLL, (3) 12"X30" CHROMED KNURLED ROLLS, (3) OUTFEED & SLOW DOWN BELTS, CONTROLS & ELECTRICS, SPARE HEADS & PARTS, S/N: 803-78 & RETROFIT #22

## **TILT HOIST - LUG LOADER (PLANER MILL):**

9' 2-ARM X 110" HYDRAULIC OPERATED TILT HOIST W/30 HP HYDRAULIC UNIT,  
(2) APPROX. 26' 2-STRAND H78 INFEED TRANSFERS, S-DRIVE, SKK GEARHEAD MOTORS  
PLC STYLE LUG LOADER W/INFEED TRANSFER, DRIVE & ELECTRICS

## **BANDER - TRIMMERS (PLANER MILL):**

**MACFAB TS44** PACKAGE SQUEEZE W/STOP, BOTTOM & SIDE GATES, 18' POWERED INFEED ROLLCASE W/(7) 54" ROLLS, 8' 2-STRAND INFEEDS, APPROX. 45' POWERED OUTFEED ROLLCASE, (2) 2-STRAND OUTFEEDS, HYDRAULIC UNIT, CONTROLS & ELECTRICS  
CUSTOM BUILT 8' 2-SAW TRIMMER W/APPROX. 5 HP MOTORS & 20" SAWS, SPARE SAWS  
CUSTOM BUILT 8' LINE SHAFT TRIMMER W/30 HP MOTOR, (6) APPROX. 20" SAWS,  
APPROX. 13' 13-STRAND 81X LUGGED FEED THRU TRANSFER, SPARE SAWS

## **HOG - CHIPPERS:**

**LAMB HX750** HAMMER HOG W/TOSHIBA 300 HP/1,180 RPM MOTOR, APPROX. 68 LB. REVERSIBLE SWING HAMMERS, 35-50 TPH, 3" MINUS, MAX. 10"X60", 31"X50" OPENING, 64"X54" DISCHARGE, S/N: 910477-001  
**BLACK CLAWSON** 66" 8-KNIFE CHIPPER W/KEY KNIFE CONVERSION, GE 300 HP/1,180 RPM MOTOR, HORIZONTAL FEED, BOTTOM DISCHARGE, SPARE DISC, NEEDS REBUILD (SAWMILL), S/N: 3074  
**KOCKUMS 58** 58" 8-KNIFE CHIPPER W/KEY KNIFE CONVERSION, GE 200 HP/1,180 RPM MOTOR, HORIZONTAL FEED, BOTTOM DISCHARGE (PLANER MILL), S/N: 059-2-03

## **CHIP LOADING EQUIPMENT:**

**WIG WAG** SINGLE CAR CHIP LOADING STATION W/APPROX. 60' HOOD, CABLE WINCH (NO MOTOR), APPROX. 60' TARPING STATION(LOCATED IN LIVINGSTON, MT)

## **VIBRATORY CONVEYORS:**

**VIBRA-PRO** 24"X70' NON-BALANCED VIBRATORY CONVEYOR, 375 RPM, 1-1/8" STROKE (SAWMILL), S/N: 2235-05-H-1-037  
**VIBRA-PRO** 24"X56' NON-BALANCED VIBRATORY CONVEYOR, 375 RPM, 1-1/8" STROKE (SAWMILL), S/N: 2250-05-H-1-037R1  
**VIBRA-PRO** 24"X55' NON-BALANCED VIBRATORY CONVEYOR, 375 RPM, 1-1/8" STROKE (SAWMILL)  
**VIBRA-PRO** 24"X41' NON-BALANCED VIBRATORY CONVEYOR, 375 RPM, 1-1/8" STROKE (SAWMILL), S/N: 2236-05-H-1-037R1  
**VIBRA-PRO** 24"X36' NON-BALANCED VIBRATORY CONVEYOR, 375 RPM, 1-1/8" STROKE, 4' FIBERGLASS TUB W/MDI CCW65A METAL DETECTOR (SAWMILL), S/N: 8677  
**WEBSTER** APPROX. 18"X27' NON-BALANCED VIBRATORY CONVEYOR W/5' TUB, MDI CCW54A METAL DETECTOR (PLANER MILL), S/N: 6276

# R-Y TIMBER, INC.



**VIBRA-PRO**  
24"X70' VIBRATORY CONVEYOR



**2002 QNW 1011-D**  
ROTARY SCREW COMPRESSOR



**LOCATED IN LIVINGSTON, MT**

**1978 CLEAVER BROOKS CB-2000X-400**  
NATURAL GAS FIRED PACKAGE BOILER



**WRIGHT WM TALON TW-2**  
AUTOMATIC TIP WELDER



**VOLLMER CHC20H**  
AUTOMATIC CARBIDE SAW GRINDER

## **SCREENS - BLOWERS - FEEDERS:**

**KOCKUMS 8'X8' 2-DECK CHIP SCREEN (SAWMILL), S/N: 70186**

**KOCKUMS 8'X8' 2-DECK CHIP SCREEN (PLANER MILL)**

**WESTERN PNEUMATICS 10"X20" HIGH PRESSURE CHIP BLOWER W/TOSHIBA 75 HP MOTOR (SAWMILL)**

**SUTORBILT 8"X20" HIGH PRESSURE CHIP BLOWER W/75 HP MOTOR (SAWMILL)**

**8"X14" HIGH PRESSURE CHIP BLOWER W/50 HP MOTOR, STODDARD SILENCER (PLANER MILL)**

**APPROX. 24"X24" CHIP FEEDER W/SM CYCLO GEARHEAD MOTOR (SAWMILL)**

**RADER 24"X24" CHIP FEEDER W/SM CYCLO GEARHEAD MOTOR (SAWMILL)**

**ARCHER 20"X25" CHIP FEEDER W/SM CYCLO GEARHEAD MOTOR (PLANER MILL)**

## **BINS - CYCLONES - SURGE BINS:**

**PEERLESS APPROX. 90-UNIT HYDRAULIC OPERATED MONO BIN W/CROSS TOP AUGER (SAWMILL)**

**PEERLESS APPROX. 70-UNIT HYDRAULIC OPERATED MONO CHIP BIN W/CROSS TOP AUGER (SAWMILL)**

**PEERLESS APPROX. 40-UNIT HYDRAULIC OPERATED CHIP BIN (SAWMILL)**

**PEERLESS APPROX. 30-UNIT HYDRAULIC OPERATED BARK BIN (SAWMILL)**

**(2) PEERLESS APPROX. 30-UNIT HYDRAULIC OPERATED SHAVINGS BINS W/CROSS TOP AUGER (PLANER MILL)**

**(2) PEERLESS APPROX. 21-UNIT HYDRAULIC OPERATED CHIP BINS W/CROSS TOP AUGER (PLANER MILL)**

**CLARKES APPROX. 14' CYCLONE W/STAND & PIPING (SAWMILL)**

**APPROX. 8'X10'X12' LIVE BOTTOM SURGE BIN W/SINGLE AUGER W/MOTOR TO SHAFT MOUNTED REDUCER**

**APPROX. 8'X10'X12' LIVE BOTTOM SURGE BIN W/BOX CHAIN CONVEYOR, SM CYCLO GEARHEAD MOTOR**

**APPROX. 8'X10'X12' LIVE BOTTOM SURGE BIN W/DUAL SCREW AUGER & CYCLONE W/DRIVE MOTOR**

## **COMPRESSORS - DRYERS - AIR RECEIVER:**

**2002 QNW 1011-D ROTARY SCREW COMPRESSOR W/200 HP MOTOR, AIR COOLED, ATTACHED ELECTRICS, S/N: 020185**

**1979 QNW 1251-A ROTARY SCREW COMPRESSOR W/TOSHIBA 250 HP MOTOR, AIR COOLED, S/N: 790999**

**ZURN GENERAL HL140 DUAL TOWER COMPRESSED AIR DRYER, 820 SCFM @ 100 PSIG**

**PURE AIRE DUAL TOWER COMPRESSED AIR DRYER**

**2005 SILVAN 3'X8' AIR RECEIVER TANK, 200 PSIG, S/N: 473786**

## **BOILER:**

**1978 CLEAVER BROOKS CB-2000X-400 NATURAL GAS FIRED PACKAGE BOILER, 400 HP, 200 PSI, INPUT 163,780,000 BTU/HR, 230V, 3-PHASE, CLEAVER BROOKS BURNER CONTROLS, CONDENSATE TANK W/(2) GRUNDFOS CONDENSATE PUMPS, (3) LMI METERING PUMPS, KINETCO SAND FILTERS(LOCATED IN LIVINGSTON, MT), S/N: 1-65224**

## **FILING & GRINDING ROOMS:**

**ARMSTRONG SUPER DUTY BANDSAW AUTO LEVELER (REFURBISHED), S/N: SDESL-13**

**SIMONDS KR0970 CIRCLE SAW LEVELER, S/N: 05-9702-1178**

**ARMSTRONG 3-10C STRETCHER ROLL W/LINEAL SLIDE, S/N: 10120**

**WRIGHT WM TALON TW-2 AUTOMATIC TIP WELDER, S/N: B0116**

**WRIGHT W-150-HD-E TOPPER & FACER**

**VOLLMER CHC20H AUTOMATIC CARBIDE SAW GRINDER, S/N: 1466**

**ARMSTRONG #5 STRETCHER ROLL W/ANVILS & BENCH, S/N: 7965**

**(2) NEWMAN G280 TUB STYLE KNIFE GRINDERS**

**UNITED TOOL NO. 225 PROFILE GRINDER, S/N: 1042**

**GROUP OF EQUIPMENT TO INCLUDE: BARNHARDT NO. 41 WHEEL GRINDER, MILLER SYNCROWAVE 200 WELDER, BELL K275 CHAIN SHARPENER, CAMPBELL HAUSFELD 7-1/2 HP COMPRESSOR, DAYTON 1-TON CHAIN HOIST, ACME BSA100 CIRCLE SAW SHARPENER, ROUND SAW ANVILS & SET UP STAND, NIELSEN F500 SAW SHARPENER, SPARE BANDSAWS & CIRCLE SAWS, (3) SPARE 60" INSERT TOOTH SAWS**



**SALEM**  
APPROX. 1"X4" RECOVERY EDGER



**LAMB HX750**  
HAMMER HOG

# NO MINIMUMS - NO RESERVES



**2014 CH EATON  
2,000 AMP 3-SECTION  
POW-R-LINE SWITCHBOARD**



**2014 BENSRAW RX2E-400-480-3R-KP  
400 HP COMBINATION SOFT STARTER**



**MILL STORES**



**LARGE ASSORTMENT OF  
LOG & LUMBER TRANSFERS**



**LARGE ASSORTMENT OF MOTORS**

## **MILL ELECTRICS:**

**T&R ELECTRICS** 1,500 KVA PAD MOUNT TRANSFORMER, 12,470 GRDY/7,200 TO 480 GRDY/277V

**T&R ELECTRICS** 1,500 KVA PAD MOUNT TRANSFORMER, 7,200 TO 480Y/277V

**(2) HOWARD INDUSTRIES** 1,500 KVA PAD MOUNT TRANSFORMER, 12,470 GRDY/7,200 TO 480Y/277V

**(4) ASSORTED PAD MOUNT TRANSFORMERS**

**2014 CH EATON** 2,000 AMP, 3-SECTION POW-R-LINE SWITCHBOARD, MAGNUM SBS620 LOW VOLTAGE BREAKER, 480Y/277V

**SQUARE D QED STYLE** 2,000 AMP, 2-SECTION POWER SWITCHBOARD, 480Y/277V  
**ITE SWITCHBOARD STYLE** 1,200 AMP MAIN

**2014 BENSRAW RX2E-400-480-3R-KP** 400 HP COMBINATION SOFT STARTER (HOG)

**BENSRAW RBX-1-S-414A-17C** 350 HP SOLID STATE STARTER (BOARD EDGER)

**BENSRAW RBX-1-S-361A-16C** 300 HP SOLID STATE STARTER (RESAW #1)

**BENSRAW RBX2E-250-480-3R-KP** 250 HP COMBINATION SOFT STARTER (HEAD RIG)

**BENSRAW TRM-352-5-0-480-H12** 250 HP SOLID STATE STARTER (GANG EDGER)

**ALLEN BRADLEY SMC DIALOG PLUS 150B360NBD** 300 HP SMART MOTOR CONTROLLER (RESAW #1)

GROUP OF TOSHIBA VF-S11 INVERTERS TO 15 HP

**ALLEN BRADLEY** 7-SECTION MCC W/(24) SWITCHES (HEAD RIG AREA)

**ALLEN BRADLEY** 6-SECTION MCC W/(19) SWITCHES (DEBARKER AREA)

**ALLEN BRADLEY** 5-SECTION MCC W/(19) SWITCHES (DEBARKER AREA)

**ALLEN BRADLEY** 4-SECTION MCC W/(26) SWITCHES (BOARD EDGER AREA)

**ALLEN BRADLEY** 4-SECTION MCC W/(19) SWITCHES (SHOP AREA)

**ALLEN BRADLEY** 4-SECTION MCC W/(18) SWITCHES (TIMBER SIZER AREA)

**ALLEN BRADLEY** 3-SECTION MCC W/(19) SWITCHES (GANG AREA)

**ALLEN BRADLEY** 3-SECTION MCC W/(16) SWITCHES (SAWMILL CHIPPER AREA)

**ALLEN BRADLEY** 3-SECTION MCC W/(10) SWITCHES (RESAW #2 AREA)

**ALLEN BRADLEY** 3-SECTION MCC W/(9) SWITCHES (PLANER CHIPPER AREA)

**ALLEN BRADLEY** 2-SECTION MCC W/(5) SWITCHES (HOG AREA)

**CH EATON** 6-SECTION MCC W/(18) SWITCHES (RESAW #1 AREA)

**CH EATON** 6-SECTION MCC W/(16) SWITCHES (PLANER AREA)

**(2) SQUARE D** 3-SECTION MCC'S W/(9) SWITCHES (PLANER STACKER AREA)

MOTORS TO 250 HP, SKK & SM CYCLO GEARHEAD MOTORS TO 20 HP, DC MOTORS TO 75, WIRE & CONDUIT LOT

## **MILL SHOP:**

WELDERS, OXY/ACETYLENE SETS, LATHE, SHOP PRESS, BANDSAW, RADIAL ARM DRILL, TABLE SAW, GRINDERS, TABLES, LOCKERS, CABINETS & MORE

## **MILL STORES:**

BEARINGS, SPROCKETS, COUPLERS, MILL CHAIN, BUSHINGS, BELTS, NUTS & BOLTS BINS, VALVES, AIR BAGS, HYDRAULIC MOTORS & PUMPS, PIPE FITTINGS, MACHINE PARTS, BELTING, HYDRAULIC HOSE & SAWS, HYDRAULIC FITTINGS, SPARE MOTORS, LUMBER CARTS & MORE

**CRETEX MIDWEST** APPROX. 4'X6'X10' SINGLE CELL SELF-CONTAINED FUEL TANK, CONCRETE EXTERIOR(LOCATED IN LIVINGSTON, MT), S/N: 64-0018

**REBUILT CAMBIO** STYLE 30" 5-ARM DEBARKER RING(LOCATED IN LIVINGSTON, MT)

## **TRANSFERS - CONVEYORS - ROLLCASES:**

NUMEROUS LOG & LUMBER TRANSFERS TO 60', NUMEROUS CHAIN CONVEYORS TO 100', NUMEROUS BELT CONVEYORS TO 60', ROLLCASES TO 30'

## **MILLS BUILDINGS:**

IRREGULAR SHAPED SAWMILL BUILDING

IRREGULAR SHAPED PLANER MILL BUILDING

8'X20' STORAGE CONTAINER



**IRREGULAR SHAPED  
SAWMILL BUILDING**



**IRREGULAR SHAPED  
PLANER MILL BUILDING**

# R-Y TIMBER, INC.

## LOCATED IN LIVINGSTON, MT



1977 WAGNER LUMBER JACK L470



CAT D7

## LOCATED IN LIVINGSTON, MT



CAT EL240



CAT 12G



HYSTER H155XL2

## ROLLING STOCK IN LIVINGSTON, MT:

**CAT 988B** RUBBER TIRE LOG LOADER W/140" BUCKET, CAT 3408 DIESEL ENGINE, 33/65R33 TIRES (RECORDS AVAILABLE), HOUR METER READS: 38,562, S/N: 50W3582

**1977 WAGNER LUMBER JACK L70** RUBBER TIRE LOG LOADER, 35-TON, CUMMINS 400 DIESEL ENGINE, ALLISON CRT-5631 TRANSMISSION, 29.5-25 TIRES (RECORDS AVAILABLE), S/N: L707701

**1977 WAGNER LUMBER JACK L470** RUBBER TIRE LOG LOADER, 35-TON, CUMMINS 360 DIESEL ENGINE, ALLISON CRT-5631 TRANSMISSION, 29.5-29 TIRES, FIRE DAMAGED, SPARE CYLINDERS (RECORDS AVAILABLE)

**CAT 966C** RUBBER TIRE LOG LOADER W/GP BUCKET, CAT 3306 DIESEL ENGINE, POWERSHIFT TRANSMISSION, 3RD VALVE, BALDWIN QUICK ATTACHMENT, 23.5-25 TIRES (RECORDS AVAILABLE), S/N: 76J6263

**1989 CAT 240B** HEEL BOOM LOG LOADER W/PSM SWIVEL GRAPPLES, CAT 3116 DIESEL ENGINE (RECORDS AVAILABLE), HOUR METER READS: 50,000, S/N: 5WG00464

**CAT EL240** HEEL BOOM LOG LOADER W/PSM SWIVEL GRAPPLES, CAT 3304 DIESEL ENGINE, PARTS MACHINE (RECORDS AVAILABLE), HOUR METER READS: 22,000, S/N: 4JF60113/09Z05771

**CAT D6C** DOZER W/CAT 3306 DIESEL ENGINE, 11' 3-WAY U-BLADE, CABLE WINCH, 20" SINGLE GROUSER TRACKS, SPARE U-FRAME & (2) BLADES (RECORDS AVAILABLE), S/N: 12K2189

**CAT 12F** ROAD GRADER W/CAT 3306 DIESEL ENGINE, 14' MOLD BOARD, MID SCARIFIER ATTACHMENT, SNOW WING ATTACHMENT (RECORDS AVAILABLE), S/N: 13K3198

**CASE 580D** CONSTRUCTION KING 2WD BACKHOE, JOHN DEERE DIESEL ENGINE, 7' FRONT BUCKET, 30" DIGGER BUCKET, OUTRIGGERS, CANOPY (RECORDS AVAILABLE), HOUR METER READS: 4,818, S/N: 90545057

**1976 WHITE WESTERN STAR** TANDEM AXLE DUMP TRUCK W/IAG AXLE, CUMMINS DIESEL ENGINE, FULLER ROAD RANGER TRANSMISSION, PTO, OMAHA STANDARD 8'X22' DUMP BOX, 11R24.5 TIRES W/10-HOLE ALUMINUM WHEELS (RECORDS AVAILABLE), ODOMETER READS: 501,248, S/N: K0PEHH1019802

**1973 FORD 900** TANDEM AXLE DUMP TRUCK W/DETROIT DIESEL ENGINE, EATON FULLER ROAD RANGER TRANSMISSION, WILLIAMSON WDD18-12 DUMP BOX & PTO, 11R24.5 TIRES W/10-HOLE ALUMINUM WHEELS (RECORDS AVAILABLE), ODOMETER READS: 17,919, S/N: U91TV94732

**1972 FORD 900** TANDEM AXLE DUMP TRUCK W/CUMMINS DIESEL ENGINE, FORD MT650 TRANSMISSION, DUMP BOX & PTO, 11R24.5 TIRES W/10-HOLE RIMS (RECORDS AVAILABLE), S/N: T90KVP93314

**1965 PETERBILT** TANDEM AXLE WATER TRUCK W/CUMMINS 250 DIESEL ENGINE, MANUAL TRANSMISSION, PTO, APPROX. 2,000 GALLON WATER TANK W/FRONT, BACK & SIDE PIPES (RECORDS AVAILABLE), ODOMETER READS: 55,311, S/N: K5435

**1980 KENWORTH T900A** TANDEM AXLE TRACTOR W/DETROIT DIESEL ENGINE, EATON FULLER ROAD RANGER TRANSMISSION, 5TH WHEEL HITCH, 11R24.5 TIRES W/10-HOLE ALUMINUM RIMS (RECORDS AVAILABLE), ODOMETER READS: 419,085, S/N: 179397S

**1971 TALBERT** TRI-AXLE 60-TON LOWBOY W/APPROX. 9'X45' DECK W/WINGS, (12) 255/70R22.5 TIRES (RECORDS AVAILABLE), S/N: 3713

**2004 FORD F150** 4X4 CREW CAB PICKUP W/TRITON 5.4L GAS ENGINE, AUTOMATIC TRANSMISSION (RECORDS AVAILABLE), ODOMETER READS: 215,000, S/N: 1FTYX145XNC71251

**CAT V160B** 16,000 LB. CAPACITY FORKLIFT, CAT 3208 DIESEL ENGINE, MANUAL 4-SPD TRANSMISSION W/SPARE, 218" 2-STAGE MAST W/SIDE SHIFT, 8' FORKS, DUAL PNEUMATIC TIRES (RECORDS AVAILABLE), HOUR METER READS: 5,953, S/N: 6700111

**CAT V80E** APPROX. 8,000 LB. CAPACITY FORKLIFT, PERKINS DIESEL ENGINE, APPROX. 120" 3-STAGE MAST W/SIDE SHIFT, 48" FORKS, PNEUMATIC TIRES, ENCLOSED CAB (RECORDS AVAILABLE), S/N: 37W3090

**CAT V60E** APPROX. 6,000 LB. CAPACITY FORKLIFT, PERKINS DIESEL ENGINE, POWERSHIFT TRANSMISSION, APPROX. 120' 2-STAGE MAST W/SIDE SHIFT, 48" FORKS (RECORDS AVAILABLE), S/N: 04X0256

**BOBCAT 843** SKID STEER W/BUCKET, PERKINS DIESEL ENGINE, 12-16.5 TIRES (RECORDS AVAILABLE), HOUR METER READS: 4,912, S/N: 5037M34103

**BOBCAT 843** SKID STEER W/BUCKET, PERKINS DIESEL ENGINE, 12-16.5 TIRES (RECORDS AVAILABLE), HOUR METER READS: 7,915, S/N: 5037M25147

**1978 JOY D185QP** 125 PSI SINGLE AXLE COMPRESSOR W/JOHN DEERE 4219DF 4-CYL DIESEL ENGINE, S/N: D-185QP-161725

**LOFTNESS TIMBER 73AXH** TREE MASTICATOR (SPARE UNUSED SET OF KNIVES), S/N: 01-445 QUANTITY OF EQUIPMENT ATTACHMENTS, SPARE PARTS & MORE



James G. Murphy Co.  
murphyauction.com  
425.486.1246



# NO MINIMUMS - NO RESERVES

## ROLLING STOCK IN TOWNSEND, MT:

**WAGNER L90** 2WD RUBBER TIRE LOG LOADER W/CUMMINS 400 DIESEL ENGINE, 33.5-33 TIRES  
**CAT D7** DOZER W/CAT 3306 DIESEL ENGINE, 11' 3-WAY STRAIGHT BLADE, HYSTER D7K CABLE WINCH, 22" SINGLE GROUSER TRACKS, ROPS, S/N: 94N3412

**CAT 12G** MOTOR GRADER W/CAT 3306 DIESEL ENGINE, 12' MOLD BOARD, 7-BARREL RIPPER, 26V1993, 14.00-24 TIRES, S/N: 3N35291

**HYSTER H155XL2** 14,650 LB. CAPACITY FORKLIFT, PERKINS DIESEL ENGINE, MONOTROL, 212" 2-STAGE MAST W/SIDE SHIFT, 12"X48" FORKS, DUAL SOLID TIRES, HEATED CAB, S/N: G006V03078C

**CAT V180B** 18,000 LB. CAPACITY FORKLIFT, CAT DIESEL ENGINE, 218" STAGE MAST W/SIDE SHIFT, 42" FORKS, DUAL PNEUMATIC TIRES, S/N: 17V00791

**HYSTER H50XM** 4,850 LB. CAPACITY FORKLIFT, PROPANE, 189" 3-STAGE MAST W/SIDE SHIFT, 40" FORKS, PNEUMATIC TIRES, S/N: D177B3905V

**2002 CHEVROLET SUBURBAN** V8 GAS ENGINE, AUTOMATIC TRANSMISSION, ODOMETER READS: 140,388, S/N: 3GNFK16ZX2G212071

**1999 FORD F150XLT** 4X4 CREW CAB PICKUP, TRITON V8 GAS ENGINE, AUTOMATIC TRANSMISSION, S/N:2FTRX18L0XCB13988

**1985 FREIGHTLINER COE** TANDEM AXLE TRACTOR W/SLEEPER, CUMMINS DIESEL ENGINE, FULLER ROADRANGER 13-SPEED TRANSMISSION, PROTECH HEADACHE RACK, ALUMINUM FUEL TANK, 11R24.5 TIRES, 10-HOLE WHEELS

**1983 ALLOY** 40' T/A FLATBED TRAILER, 11R24.5 TIRES, 10-HOLE WHEELS, S/N: 1ALSF928DS083271

**1982 COMET** 30' TANDEM AXLE PUP TRAILER W/5TH WHEEL HITCH & PINTLE HITCH, 11R24.5 TIRES, 10-HOLE WHEELS, S/N: 1C0F40027FS03303

**UTILITY** 24' SINGLE AXLE PUP TRAILER, 11R24.5 TIRES, 10-HOLE WHEELS

**1989 JOHN DEERE 892D-LC** HEEL BOOM LOG LOADER (NO MOTOR), YOUNG BOOM

## LOCATED IN LIVINGSTON, MT



CAT D6C

## LOCATED IN LIVINGSTON, MT



(2) BOBCAT 843



## TERMS AND CONDITIONS

13% BUYERS PREMIUM ON ALL ITEMS

DUE TO INSURANCE AND SAFETY REASONS, CHILDREN UNDER 12 CANNOT BE ADMITTED

**PAYMENT:** FULL PAYMENT MUST BE MADE NO LATER THAN 5 PM, FRIDAY, JUNE 24TH. PAYMENT MUST BE MADE BY ONLINE CREDIT CARD OR WIRE TRANSFER ONLY. AFTER THE AUCTION CLOSSES & YOU RECEIVE YOUR EMAILED INVOICE, PLEASE REPLY AND WE WILL CHARGE YOUR CARD ON FILE.

**REMOVAL:** ITEMS MUST BE REMOVED NO LATER THAN 4:00 PM, FRIDAY. SEPTEMBER 23RD

**REMOVAL HOURS:** 8:00 AM TO 4:00 PM, MONDAY THROUGH FRIDAY UNTIL SEPTEMBER 23RD. NO WEEKEND REMOVAL.

UPON AWARD OF BID DISMANTLERS TAKE RESPONSIBILITY FOR ANY ENVIRONMENT ISSUES THEY CREATE (E.G. SPILLED HYDRAULIC OIL). DISMANTLERS ARE REQUIRED TO PROVIDE THEIR OWN MATERIALS TO CONTAIN & CLEAN UP ANY OIL SPILLAGE.

**INSURANCE:** ANYONE REMOVING EQUIPMENT THAT REQUIRES RIGGING, CUTTING, DISMANTLING OR ANY ALTERATIONS TO THE PROPERTY IS REQUIRED TO PROVIDE \$1,000,000.00 DOLLAR GENERAL LIABILITY INSURANCE CERTIFICATE SHOWING THE JAMES G. MURPHY COMPANY AND R-Y TIMBER AS THE ADDITIONAL INSURED PARTIES. INSURANCE CERTIFICATE AND PROOF OF WORKERS COMPENSATION COMPLIANCE MUST BE ON FILE AT SALE SITE AND WITH THE JAMES G. MURPHY CO. BEFORE DISMANTLING COMMENCES. PURCHASED LOTS ARE AT THE BUYER'S RISK. IT IS THE RESPONSIBILITY OF THE BUYER TO PROVIDE ADEQUATE PROPERTY INSURANCE COVERAGE FOR THE ITEMS PURCHASED AND BUYER'S OWN EQUIPMENT AT THE AUCTION SITE.

FIRE PROTECTION POLICY: NO CUTTING WITHOUT A PERMIT

- DISMANTLERS REQUIRED TO PROVIDE THEIR OWN FIRE HOSE & SPRAY NOZZLES.
- A SIGNED BURNING PERMIT ISSUED TO DISMANTLERS WILL BE DISPLAYED IN CUTTING AREA
- A LIMITED NUMBER OF BURNING PERMITS WILL BE ISSUED. ONE BURNING PERMIT PER HOSE WHILE CUTTING.
- EACH MAN USING A CUTTING TORCH WILL HAVE ONE FIREWATCH WITH A HOSE WHILE CUTTING
  - FIREWATCH TO WET DOWN BEFORE, DURING AND AFTER CUTTING.
  - FIREWATCH TO STAY IN AREA ONE HOUR AFTER CUTTING IS COMPLETED
- CUTTING HOURS ARE: 7:00 AM – 3:00 PM

**WARRANTY DISCLAIMER:** ALL SALES ARE FINAL. ALL ITEMS ARE BEING SOLD "AS IS, WHERE IS", WITH ALL FAULTS AND WITHOUT ANY WARRANTIES AS TO MERCHANTABILITY OF FITNESS FOR A PARTICULAR PURPOSE. THE PRINCIPAL, THE AUCTIONEER, THE ADVERTISING COORDINATOR, AND ANY OF THEIR AGENTS MAKE NO EXPRESS OR IMPLIED WARRANTIES OF ANY TYPE.

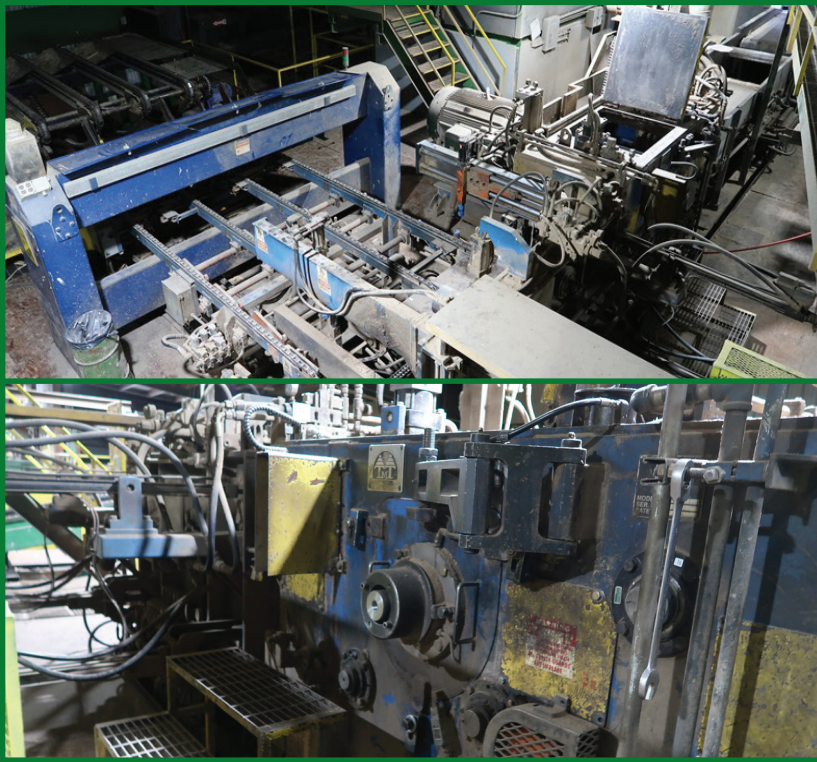
**ADVERTISING DISCLAIMER:** ALL INFORMATION WAS OBTAINED FROM SOURCES DEEMED RELIABLE. ALTHOUGH EVERY PRECAUTION HAS BEEN TAKEN TO ENSURE ACCURACY, THE PRINCIPAL, THE JAMES G. MURPHY CO., THE ADVERTISING COORDINATOR AND ALL THEIR AGENTS SHALL NOT BE RESPONSIBLE FOR ANY ERRORS OR OMISSIONS THEREIN. IT IS FOR THIS REASON THAT WE RECOMMEND THAT ALL ITEMS BE THOROUGHLY INSPECTED PRIOR TO THE POINT OF SALE.

**ONLINE BIDS:** FAILURE TO AWARD BID - ONLINE BIDDERS WILL NOT HAVE ANY CLAIM AGAINST THE JAMES G. MURPHY CO. FOR FAILURE TO SUBMIT BIDS TO THE AUCTIONEER OR ANY ERROR ON THE BIDDING PLATFORM. IN SOME INSTANCES, THE BIDDING PLATFORM MAY SHOW AN ITEM AWARDED TO AN ONLINE CUSTOMER; HOWEVER, WE RESERVE THE RIGHT TO WITHDRAW A BID AWARDED IN ERROR.

1.800.426.3008 - 425.486.1246 - [murphyauction.com](http://murphyauction.com)



# PUBLIC ONLINE AUCTION - R-Y TIMBER, INC.



**2001 TMT**

4\"X30\" SPLINED TOP ARBOR BOARD EDGER



**James G. Murphy Co.**  
Commercial & Industrial Auctioneers  
P.O. Box 82160, Kenmore, WA 98028

PRESORTED  
FIRST CLASS MAIL  
U.S. POSTAGE  
PAID  
SEATTLE, WA  
PERMIT NO. 963



# James G. Murphy Co.



Commercial & Industrial Auctioneers

# PUBLIC ONLINE AUCTION

## R-Y TIMBER, INC.

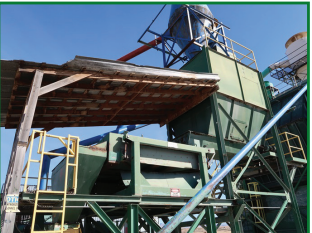
Sawmill

Start Date: 11:00 AM | Thursday - June 16

End Date: 11:00 AM | Thursday - June 23

Preview 8:00 AM to 4:00 PM | Wednesday, June 22

Location: 85 Mill Road, Townsend, MT 59644



1.800.426.3008 - 425.486.1246 - [murphyauction.com](http://murphyauction.com)