

PUBLIC ONLINE AUCTION - HERMISTON, OR



SABER B-0570H



JET



2003 BIRMINGHAM RH-0606



ROUND0 R3



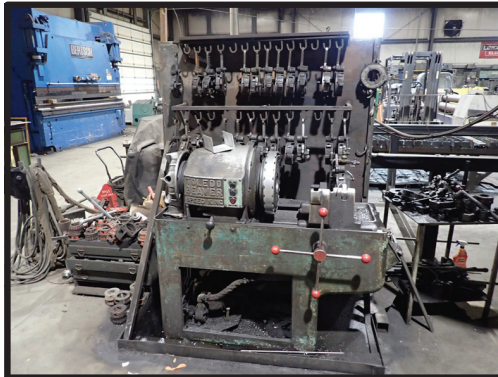
SCOTCHMAN 5014TM



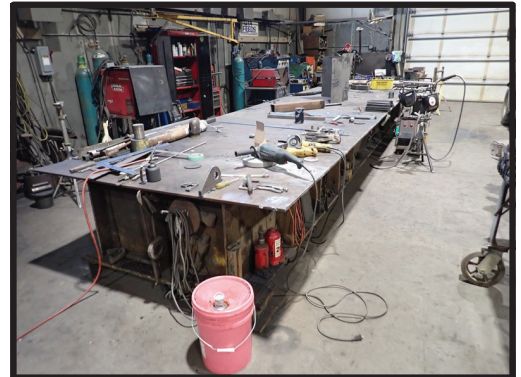
2016 PRESTON EASTIN PE30HD6



60\"X60\"X5\" ACORN TABLE



TOLEDO BEAVER SPEED KING



ASSORTED STEEL FAB TABLES



146\" 4-WAY DIE



MARVEL 81/11



2016 ERCOLINA CML TB60

FABRICATION, MACHINE SHOP & ROLLING STOCK

UNUSED



2022 BIRMINGHAM YCL-2060



James G. Murphy Co.

Commercial & Industrial Auctioneers
P.O. Box 1127, Marysville, WA 98270

PRESORTED
FIRST CLASS MAIL
U.S. POSTAGE
PAID
SEATTLE, WA
PERMIT NO. 963



**REGISTER
TO BID @
MURPHYAUCTION.COM**



James G. Murphy Co.

Commercial & Industrial Auctioneers

PUBLIC ONLINE AUCTIONS

ROSS MACHINE & STEEL SALES, INC.

Fabrication, Machine Shop & Rolling Stock

Start Date: 10:00 AM | Wednesday - April 24

End Date: 10:00 AM | Wednesday - May 1

Preview: 8:00 AM to 4:00 PM | Tuesday - April 30

Location: 400 W. Harper Rd., Hermiston, OR 97838



2013 GEHL RS5-19



2013 SUNRISE HBM-45



CINCINNATI 2510



BERTSCH

PUBLIC ONLINE AUCTION

ROSS MACHINE & STEEL SALES, INC.



Fabrication, Machine Shop & Rolling Stock

Start Date: 10:00 AM | Wednesday - April 24

End Date: 10:00 AM | Wednesday - May 1

Preview: 8:00 AM to 4:00 PM | Tuesday - April 30

Location: 400 W. Harper Rd., Hermiston, OR 97838



2012 MARVEL 2125M



2012 IMCAR SIHR 6/3



50" X 356" LATHE

LEBLOND



2,170 HRS

2017 GEHL RS5-19

PUBLIC ONLINE AUCTION - HERMISTON, OR

HEAVY EQUIPMENT:

2017 GEHL RS5-19 LOW PROFILE 5,500 LB CAP. 4X4X4 TELESCOPIC FORKLIFT, AUX. HYDRAULICS, TILTING MAST, CANOPY, PNEUMATIC TIRES, HOUR METER READS: 2,170, S/N: RS5194J51644

2013 GEHL RS5-19 LOW PROFILE 5,500 LB CAP. 4X4X4 TELESCOPIC FORKLIFT, AUX. HYDRAULICS, TILTING MAST, CANOPY, CUSHION TIRES, HOUR METER READS: 3,340, S/N: RS519YE1251023

2013 DOOSAN G25P-5 4,600 LB CAP. CUSHION TIRED FORKLIFT, 189" 3-STAGE MAST, SIDE SHIFT, PROPANE, S/N:FGA0B-1290-03556

1998 HYSTER S45XM 4,650 LB CAP. SOLID TIRED FORKLIFT, 130" 2-STAGE MAST, SIDE SHIFT, PROPANE, MONOTROL, 60" FORKS, HOUR METER READS: 6750, S/N: D187V12746V

2007 GEHL RS8-42 8,000 LB CAP. 4X4X4 TELESCOPIC FORKLIFT, 3-STAGE BOOM, CAB, CUSHION TIRES, HOUR METER READS: 5,870, S/N: RS842JY1016737

2005 GEHL RS5-34 6,000 LB CAP. 4X4X4 TELESCOPIC FORKLIFT, 3-STAGE BOOM, CAB, PNEUMATIC TIRES, HOUR METER READS: 4,100, S/N: RS5JW1012274

2005 GEHL RS5-34 6,000 LB CAP. 4X4X4 TELESCOPIC FORKLIFT, 3-STAGE BOOM, CAB, PNEUMATIC TIRES, HOUR METER READS: 3,440, S/N: RS534JW121328

2000 HYSTER H190XL 16,600 LB CAP. DUAL PNEUMATIC TIRED FORKLIFT, 212" 2-STAGE MAST, SIDE SHIFT, DIESEL, MONOTROL, 8' FORKS, CAB, HOUR METER READS: 1,742, S/N: B007D04181X

1994 HYSTER H190XL 19,000 LB CAP. DUAL PNEUMATIC TIRED FORKLIFT, 212" 2-STAGE MAST, SIDE SHIFT, FORK POSITIONERS, DIESEL, 10' FORKS, CAB, HOUR METER READS: 2,160, S/N: E007D02008R

GENIE GS-1930 19' ELECTRIC SCISSOR LIFT

HEAVY TRUCKS

2008 FORD F450 XLT 14' 4X4 FLATBED TRUCK, DIESEL, AUTO, MILLER BOBCAT WELDER, WOOD BED, ODOMETER READS: 128,000, S/N: 1FDXF47R28ED10217

1994 WHITE GMC S/A TRUCK TRACTOR, CUMMINS DIESEL, FULLER RTX11609R TRANS., S/N: 4V1JBAME0RR831924

TRAILERS:

2012 PREMIER NORTHWEST 8'X25' T/A FLATBED GOOSENECK BEAVER TAIL TRAILER, 5' TAIL, FOLDING RAMPS, S/N: 1P9GF2520CH539393

2001 VALLEY 80"X16' TILTBED EQUIPMENT TRAILER, WINCH, S/N: 1V9PT162X1S105008

2011 IRON EAGLE 8'X20' T/A DECKOVER FLATBED TRAILER, S/N: 5L6GX20D2BF000168

GREAT DANE 48' T/A HIGH BOY TRAILER, STEEL DECK 48' SPREAD AXLE ALUMINUM HIGH BOY TRAILER

LATHES:

2022 BIRMINGHAM YCL-2060 20"X60" LATHE, 3-JAW CHUCK, 3" SPINDLE, TOOL POST, TAIL STOCK, STEADY REST, TAPER ATTACHMENT, DIGITAL READOUT, 25-1,600 RPM, S/N:0622040090 (UNUSED)

2011 BIRMINGHAM YCL-2080 20"X80" GAP BED LATHE, 3-JAW CHUCK, 3" SPINDLE, TOOL POST, STEADY REST, NEWALL DIGITAL READOUT, TAPER ATTACHMENT, S/N: 141024

2008 SABER PL-1660G 16"X60" GAP BED LATHE, 3-JAW CHUCK, 2" SPINDLE, TAIL STOCK, STEADY REST, EASSON DIGITAL READOUT, TAPER ATTACHMENT, S/N: 812193

WHACHEON WL435 16"X60" LATHE, 3-JAW CHUCK, 2" SPINDLE, TOOL POST, TAIL STOCK, STEADY REST, TAPER ATTACHMENT, S/N: 22-0163

SABER 1440 14"X40" LATHE, 3-JAW CHUCK, 2" SPINDLE, TOOL POST, STEADY REST, TAIL STOCK, DIGITAL READOUT, TAPER ATTACHMENT, S/N: 0220030233

SIDNEY 24"X54" LATHE, 4-JAW CHUCK, 2" SPINDLE, TOOL POST, TAIL STOCK, 30-2,000 RPM, S/N: 9663

LEBLOND 50"X356" LATHE, 4-JAW CHUCK, 3" SPINDLE, TOOL POST, STEADY REST, TAIL STOCK, TAIL ATTACHMENT

MILLING MACHINES:

RAMBAUDI KVO VERTICAL/HORIZONTAL MILLING MACHINE, 14"X64" POWER TABLE, VISE, NEWALL C80 DIGITAL READOUT, 1,900 RPM HORIZONTAL, 3,000 RPM VERTICAL, S/N: 90669

CINCINNATI HORIZONTAL MILLING MACHINE, POWER OVER ARM, 10"X48" POWER TABLE, S/N: 5J2U5K-14

GIDDINGS & LEWIS 340T HORIZONTAL BORING MILL, 36"X72" TABLE, 4" SPINDLE, 7.5-450 RPM MAIN SPINDLE, 25-1,500 RPM AUX. SPINDLE, 55" TABLE TRAVEL, 42" VERTICAL TRAVEL, S/N: 6765

KEARNEY & TRECKER 625 TF SERIES HORIZONTAL MILL, 18"X106" POWER TABLE, S/N: 12-8946

KEARNEY & TRECKER 3CH 7-1/2 HP VERTICAL MILL, 15-1,500 RPM, 12"X64" TABLE



James G. Murphy Co.
Murphyauction.com
425.486.1246



Go To Murphyauction.com For More Info



2007 GEHL RS8-42



2005 GEHL RS5-34



2005 GEHL RS5-34



2000 HYSTER H190XL



1994 HYSTER H190XL



2013 DOOSAN G25P-5



2008 FORD F450 XLT



1994 WHITE GMC

FABRICATION, MACHINE SHOP & ROLLING STOCK

DRILLS:

CINCINNATI BICKFORD 9"X36" RADIAL ARM DRILL, VISE,
22"X22"X22" TILTING BOX TABLE, S/N: 1R5322
HCP WRA40 14"X48" RADIAL ARM DRILL, 24"X20"X20" BOX TABLE
Ooya RE-1250 12"X50" RADIAL ARM DRILL, 18"X25"X15" BOX TABLE, VISE,
S/N: 66-8260
4-SPINDLE GANG DRILL
ELLIS 9" VSD DRILL PRESS, VISE

HYDRAULIC SHEARS:

CINCINNATI 2510 3/8"X120" HYDRAULIC SHEAR, BACK GAUGE, S/N: 24825
PACIFIC 500R10 1/2"X10' HYDRAULIC SHEAR, BACK GAUGE, S/N: S10912
LODGE & SHIPLEY 808 1/2"X96" HYDRAULIC SHEAR, S/N: 44199
AMERICAN HERCULES 1/4"X12' HYDRAULIC SHEAR, 48" POWER BACK
GAUGE, SQUARING ARMS, SHEET SUPPORT, S/N: S-250144513

PRESS BRAKES:

BERTSCH 12' X 175 TON HYDRAULIC PRESS BRAKE, S/N: B-175144966
CINCINNATI 90X12 90 TON X 14' MECHANICAL PRESS BRAKE, S/N: 23971
CHICAGO R38 120" HAND BRAKE, SINGLE PIECE NOSE BAR, S/N: 67758

BENDERS:

2016 ERCOLINA CML TB60 HYDRAULIC TOP BENDER, FOOT CONTROLS,
S/N: 6016036
2013 SUNRISE HBM-45 45 TON HYDRAULIC HORIZONTAL BENDING
PRESS, TOOLING, S/N: 53060223
60"X84" HYDRAULIC BENDER, HYDRAULIC UNIT, 2" TABLE

ROLLS:

2003 BIRMINGHAM RH-0606 8"X80" 3-ROLL HYDRAULIC PLATE ROLLS,
CONTROLS, S/N: 4046
2012 IMCAR SIHR 6/3 8"X80" 3-ROLL HYDRAULIC PLATE ROLLS,
CONTROLS, S/N: B4441
SABER B-0570H 7"X60" PINCH ROLLS, S/N: 6193
JET 3"X50" PINCH ROLLS
2012 IMCAR SIHR-10 9"X120" 3-ROLL HYDRAULIC PLATE ROLLS,
S/N: 10408/066
ROUND0 R3 3"X3"X5/16" ANGLE ROLLS, S/N: 833127
WEBB GR-BM0831 POWER TANK ROLLS W/DLDR ROLLS

IRONWORKERS:

SCOTCHMAN 5014TM 50 TON IRON WORKER, TURRET HEAD, TOOLING,
2-1/2"X3" COPER, S/N: 1912K0111
STEELMASTER ST 29 TON IRON WORKER W/TOOLING, S/N: 2957

PIPE MACHINES:

TOLEDO BEAVER SPEED KING PIPE MACHINE W/TOOLING
OSTER PIPE MASTER PIPE MACHINE

BANDSAWS:

2015 FMB PHOENIX HORIZONTAL MITERING BANDSAW
2012 MARVEL 2125M VERTICAL TILT FRAME, SEMI-AUTOMATIC MITERING
BANDSAW, COOLANT SYSTEM, CONTROLS, 60 DEGREE TILT,
S/N: E2175-30193M
2017 FMB PHOENIX HORIZONTAL MITERING BANDSAW
DOALL 24" VERTICAL MITERING BANDSAW, POWER FEED, CLAMP,
CONTROLS
MARVEL 81/11 18" VERTICAL MITERING BANDSAW, CONTROLS,
S/N: E-445911W
RIDGID BANDSAW

WELDERS & PLASMA CUTTERS:

MILLER XMT350 CC/CV WELDER W/R115 WIRE FEEDER
LINCOLN TIG 175 SQUARE WAVE WELDER
MILLER SRH-404 WELDER
MILLER DELTAWELD 302 WELDER
MILLER DELTAWELD 452 WELDER
LINCOLN 255XT POWER MIG WELDER
LINCOLN 355M WELDER
MILLER XMT350 CC/CV WELDER W/22A WIRE FEEDER
HYPER THERM POWERMAX 105 PLASMA CUTTER W/CART
HYPER THERM POWERMAX 600 PLASMA CUTTER
HYPER THERM POWERMAX 1250 PLASMA CUTTER
LINCOLN POWERMIG 255C WELDER
MILLER MILLERMATIC 252 WELDER

WELDING POSITIONER:

2016 PRESTON-EASTIN PE30HD6 3,000 LB CAP. WELD POSITIONER,
S/N: 558



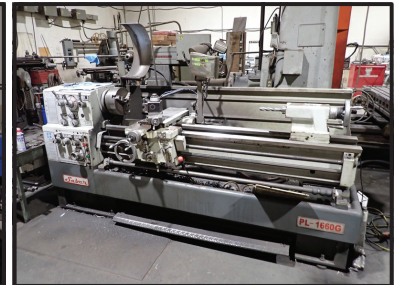
2012 PREMIER NORTHWEST



SNAP ON



2011 BIRMINGHAM YCL-2080



2008 SABER PL-1660G



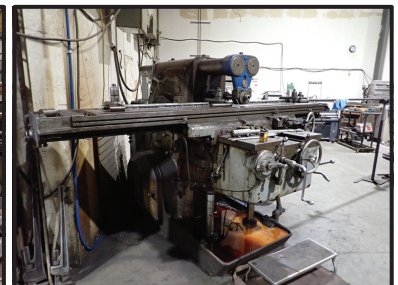
RAMBAUDI KVO



CINCINNATI



GIDDINGS & LEWIS 340T



KEARNEY & TRECKER
625 TF SERIES

PUBLIC ONLINE AUCTION - HERMISTON, OR

TABLES:

ARCLIGHT ARC MAX 5X10 CNC PLASMA TABLE, HYPERTHERM
 POWERMAX 105 POWER SUPPLY, CONTROLS
 60"X60"X5" ACORN TABLE W/WISE
2011 ESAB SIL-1000-6 4'X8' PATTERN CUTTING TABLE
 73"X145" STEEL FAB TABLE
 61"X120" STEEL FAB TABLE
 70"X242" STEEL FAB TABLE
UNION CARBIDE OXY/ACETYLENE TABLE
 60"X129" STEEL FAB TABLE

MISC. EQUIPMENT:

SNAP ON 12-DRAWER TWO DOOR TOOLBOX ON CASTERS
SULLAIR 185 185 CFM PORTABLE AIR COMPRESSOR, PERKINS DIESEL,
 HOUR METER READS: 1,251
DAKE 908-150 HYDRAULIC SHOP PRESS
GREENLEE 555 CONDUIT BENDER
 15 HP CUT OFF SAW W/INFEED ROLL CASE
 PORTABLE CUT OFF SAW W/INFEED ROLL CASE
HOUGEN 10950 DRILL SHARPENER
 144" & 146" 4-WAY DIE
(4) VAL-6 PORTABLE HEATERS
 DIESEL & GAS FUEL TANKS, FLATBAR, ANGLE & ROUND STOCK INVENTORY, (3) ANVILS, NUTS, BOLTS, CARTS, HEAVY DUTY CARTS, WELD TABLE,
 LATHE TOOLING, DRILLS, VISE, STANDS, GRINDERS, TOOLBOXES, TOOLING, HEATERS, CHUCKS, CABINET W/WISE GRIPS, WRENCHES,
 OXY/ACETYLENE SETS, (2) PLASMA CUTTERS, PIPE STANDS, DUMP HOPPERS, SHEET RACK, JOBOXES, CART RACKS **AND MUCH MORE!**

TERMS & CONDITIONS

- 13% BUYERS PREMIUM ON ALL PURCHASES -
PAYMENT: FULL PAYMENT MUST BE MADE BY 5:00 PM -
 WEDNESDAY, MAY 1ST.

REMOVAL: SMALL ITEMS MUST BE REMOVED NO LATER
 THAN 4:00 PM - FRIDAY, MAY 3RD. LARGE ITEMS MUST BE
 REMOVED NO LATER THAN FRIDAY, MAY 10TH

REMOVAL HOURS: 8:00 AM - 4:00 PM

MAY 2ND THRU MAY 10TH

NO WEEKEND REMOVAL

WARRANTY DISCLAIMER: ALL SALES ARE FINAL.

ALL ITEMS ARE BEING SOLD "AS IS, WHERE IS,"
 WITH ALL FAULTS AND WITHOUT ANY WARRANTIES AS TO
 MERCHANTABILITY.

**COMPLETE TERMS AND CONDITIONS OF SALE WILL BE
 AVAILABLE AT THE TIME OF SALE.**



2017 FMB PHOENIX



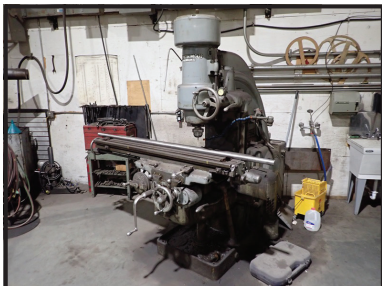
GREENLEE 555



HCP WRA40



LODGE & SHIPLEY 808



KEARNEY & TRECKER 3CH



MILLER DELTAWELD 302



ASSORTED INVENTORY



2011 ESAB SIL-1000-6



2012 IMCAR SIHR-10



AMERICAN HERCULES



ARCLIGHT ARC MAX