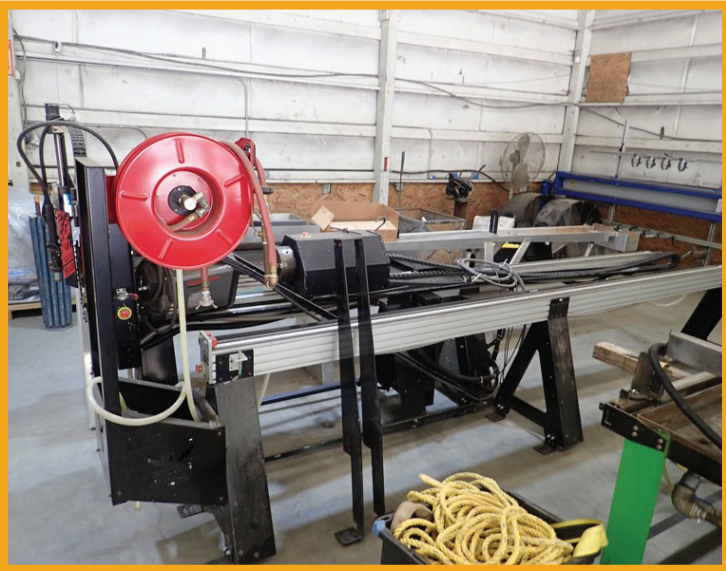


PUBLIC ONLINE AUCTION

FABRICATION SHOP



BEND-TECH DRAGON A400
CNC PLASMA TUBE & PIPE CUTTER



James G. Murphy Co.

Commercial & Industrial Auctioneers
P.O. Box 1127, Marysville, WA 98270

PRESORTED
FIRST CLASS MAIL
U.S. POSTAGE
PAID
SEATTLE, WA
PERMIT NO. 963

PUBLIC ONLINE AUCTION

RG FAB

Fabrication Shop

Start Date: 10:00 AM | Tuesday - July 8

End Date: 10:00 AM | Tuesday - July 15

Preview: 8:00 AM to 4:00 PM | Monday, July 14

Location: 3080 Innovative Way, Poulsbo, WA 98370

GO TO **MURPHYAUCTION.COM** FOR MORE INFO!



2024 CREAFORM HANDYSCAN MAX
PORTABLE LARGE FORMAT 3D SCANNER



MILLER TRAILBLAZER 325 EFI



2023 FORSTER 64227015



2018 BAILEIGH 20SA-DM



PIRANHA P90

NO MINIMUMS - NO RESERVES

1.800.426.3008 - 425.486.1246 - MURPHYAUCTION.COM



PUBLIC ONLINE AUCTION - RG FAB NO MINIMUM - NO RESERVES



3D SCANNER:

2024 CREAFORM HANDYSCAN MAX PORTABLE LARGE FORMAT 3D SCANNER W/MARKERS, OPERATING SYSTEM & CASE, S/N: 9640136

CNC PLASMA TUBE & PIPE CUTTER:

BEND-TECH DRAGON A400 CNC PLASMA TUBE & PIPE CUTTER, HYPERTHERM 45 PLASMA CUTTER MATERIAL COOLING SYSTEM W/CONTROLS, S/N: 210308

IRONWORKER:

PIRANHA P90 90-TON IRON WORKER, 2-STATION CONTROLS, PUNCH/BRAKE/PLATE/ANGLE/END SHEAR

SAWS:

2018 BAILEIGH 20SA-DM 13" CAP. DUAL MITERING HORIZONTAL BANDSAW, S/N: 18A09545

2014 BAILEIGH CS-2756A 10" COLD SAW, S/N: 273403

EVOLUTION S355 14" METAL CUTTING MITERING CHOP SAW

HILTI DSH 700-X GAS CUT OFF SAW

PLASMA CUTTERS:

PREMIER PLASMA 8'X10' PLASMA CUTTING TABLE, HYPERTHERM POWERMAX 85 PLASMA MACHINE, 4'X8' CAP. OUTBOARD PROMA ARC

HYPERTHERM POWERMAX 85 PLASMA CUTTER, S/N: 85-024012

MILLER MAXSTAR 200 PLASMA CUTTER, S/N: MB370184L

TORCH MOUNT OPERATING SYSTEM:

VOLTAGE HEIGHT CONTROL MAGNETIC BREAKAWAY TORCH MOUNT OPERATING SYSTEM

RAILING FIXTURE JIG:

2023 FORSTER 64227015 CNC CONTROLLED RAILING FIXTURE JIG W/OPERATING SYSTEM, S/N: 230176

BAR FINISHERS & SANDER:

2018 FEIN GRIT GI 150 STAINLESS STEEL FLAT BAR FINISHER W/ASSORTED SPARE BELTS, S/N: 2018-02.070516

2020 FEIN GIC TUBE/PIPE FINISHER, S/N: 2020-01.001521

FEIN G 175 6" BELT SANDER

WELDERS & WIRE FEEDERS:

TRU-WELD TW6800 STUD WELDER W/ASSORTED HARDWARE & CONSUMABLES, S/N: 6800-104

MILLER TRAILBLAZER 325 EFI GAS POWERED DC WELDER/12,000 WATT GENERATOR, S/N: MG100919R

MILLER DYNASTY 400 TIG WELDER W/TORCH & FOOT PEDAL, S/N: NC240838L

MILLER MILLERMATIC 255 MIG WELDER, S/N: NB278774N

MILLER MILLERMATIC 252 MIG WELDER, S/N: MD251181N

MILLER XMT 350 CC/CV WELDING POWER SOURCE W/CART, S/N: LG390493A

LINCOLN TIG 200 PORTABLE TIG WELDER W/FOOT PEDAL, S/N: M321200473

LINCOLN SUITCASE X-TREME 12VS & 8VS WIRE FEEDERS

MAG DRILLS:

HOUGEN HMD904 MAG DRILL W/CASE

SLUGGER MAG DRILL

MISC. EQUIPMENT:

16'X5'X1" WELDING TABLE

QUINCY QT-5 5 HP 80 GALLON VERTICAL AIR COMPRESSOR

2023 ELECTRO-STEAM GENERATOR CORP LB-050 50 KW ELECTRIC STEAM CLEANER, S/N: 44192

HILTI DD 150-U CORE DRILL W/BASE, DD-WMS100 VACUUM, ASSORTED CORE BITS, POWER TOOLS, HYDRAULIC CRIMPERS, BAR CLAMPS, VISE GRIPS, LADDERS, CONSUMABLES, DRILL PRESSES **AND MUCH MORE!**



James G. Murphy Co.

425.486.1246

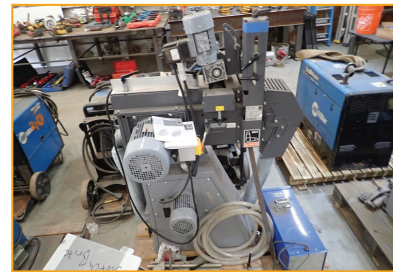
murphyauction.com



PREMIER PLASMA



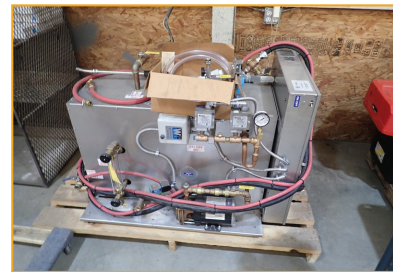
2020 FEIN GIC



2018 FEIN GRIT GI 150



HILTI DD 150-U



2023 ELECTROSTEAM



QUINCY QT-5



HOUGEN HMD904



SCAN HERE
FOR FULL
PREVIEW



MILLER DYNASTY 400



FEIN G 175

TERMS & CONDITIONS

- 13% BUYERS PREMIUM ON ALL PURCHASES -

PAYMENT: FULL PAYMENT MUST BE MADE BY
5:00 PM - TUESDAY, JULY 15TH.

REMOVAL: ITEMS MUST BE REMOVED NO LATER THAN

4:00 PM - JULY 17TH. ***NO WEEKEND REMOVAL***

REMOVAL HOURS: 8:00 AM - 4:00 PM JULY 16TH & 17TH

WARRANTY DISCLAIMER: ALL SALES ARE FINAL.

ALL ITEMS ARE BEING SOLD "AS IS, WHERE IS," WITH ALL FAULTS AND
WITHOUT ANY WARRANTIES AS TO MERCHANTABILITY.

**COMPLETE TERMS AND CONDITIONS OF SALE WILL BE
AVAILABLE AT THE TIME OF SALE.**

MURPHYAUCTION.COM FOR ADDITIONAL INFORMATION