

AUCTION CATALOG

CIPP COLVILLE INDIAN PRECISION PINE

Start Date: 9:00 AM | Wednesday - September 30

End Date: 9:00 AM | Wednesday - October 7

Preview 8:00 AM to 4:00 PM | Tuesday, October 6 (OR BY APPOINTMENT)

373 Omak Riverside Eastside Rd., Omak, WA 98841

****THERE IS A SMALL FORKLIFT AVAILABLE FOR REMOVAL UNTIL FRIDAY, OCT 23RD****

****THERE ARE NO LIGHTS OR WATER AT AUCTION SITE,
BUYERS MUST PROVIDE THEIR OWN****

TERMS AND CONDITIONS

13% BUYERS PREMIUM ON ALL ITEMS

Due to insurance and safety reasons, children under 12 cannot be admitted.

PAYMENT: Full payment must be made by 5 PM, Thursday, October 8th. Payment must be made by ONLINE credit card or wire transfer only, NO IN-PERSON PAYMENTS (due to Covid19). After the auction closes & you receive your emailed invoice, please reply and we will charge your card on file. To pay online go to murphyauction.com, click on the Online Bidding dropdown menu and go down to Make Payment.

REMOVAL: Customers are responsible for removing their items from the auction site. ALL ITEMS MUST be removed by no later than 3:30 pm, Wednesday, December 30th. Removal hours: Between 7 AM – 3:30 PM, Monday – Saturday, October 8th – December 30th. NO SUNDAY OR HOLIDAY REMOVAL.

Upon award of bid dismantlers take responsibility for any environment issues they create (e.g. spilled hydraulic oil). Dismantlers are required to provide their own materials to contain & clean up any oil spillage.

Insurance: Anyone removing equipment that requires rigging, cutting, dismantling or any alterations to port property is required to provide \$1,000,000.00 dollar General Liability Insurance certificate showing the James G. Murphy Company and The Confederated Tribes of the Colville Reservation as the additional insured parties. Insurance certificate and proof of workers compensation compliance must be on file at sale site and with the James G. Murphy Co. before dismantling commences.

Purchased lots are at the buyer's risk. It is the responsibility of the buyer to provide adequate property insurance coverage for the items purchased and buyer's own equipment at the auction site.

FIRE PROTECTION POLICY: NO CUTTING WITHOUT A PERMIT ****THERE IS NO WATER AVAILABLE AT AUCTION SITE, BUYER MUST PROVIDE THEIR OWN****

- Dismantlers required to provide their own fire hose & spray nozzles
- A signed burning permit issued to dismantlers will be displayed in cutting area
- A limited number of burning permits will be issued. One burning permit per hose while cutting
- Each man using a cutting torch will have one firewatch with a hose while cutting
- Firewatch to wet down before, during and after cutting
- Firewatch to stay in area one hour after cutting is completed
- Cutting hours are from 7 AM to 2:00 PM

WARRANTY DISCLAIMER: ALL SALES ARE FINAL. All items are being sold "As Is, Where Is," With All Faults and without any warranties as to merchantability of fitness for a particular purpose. The principal, the auctioneer, the advertising coordinator, and any of their agents make no express or implied warranties of any type.

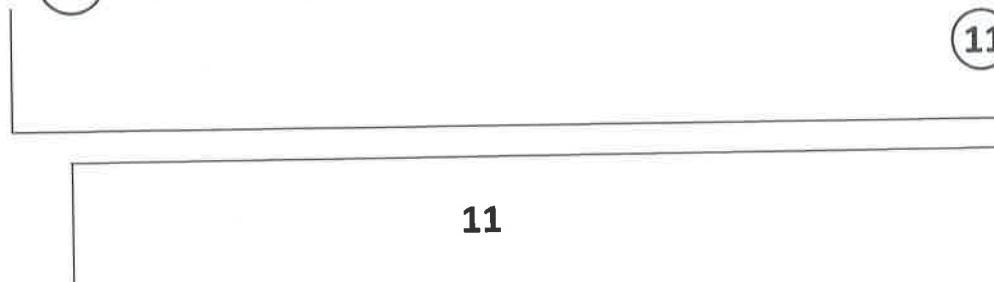
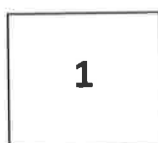
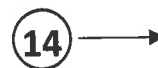
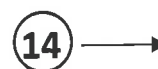
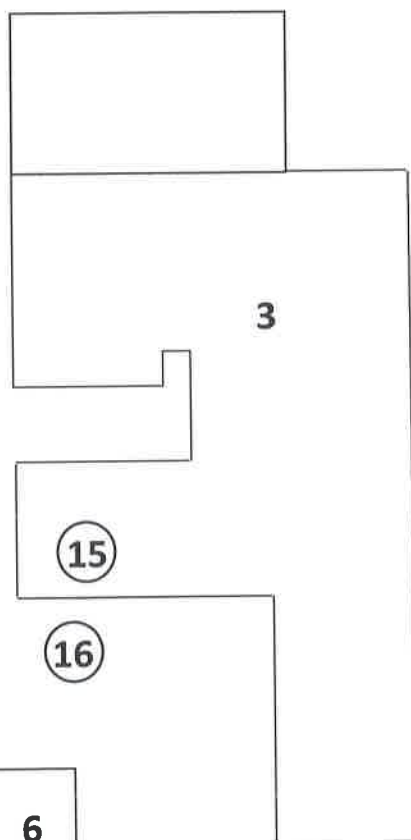
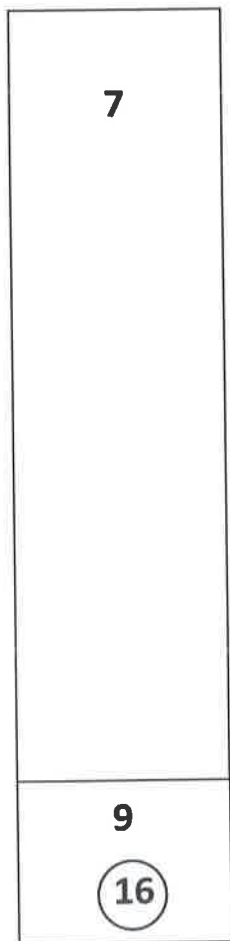
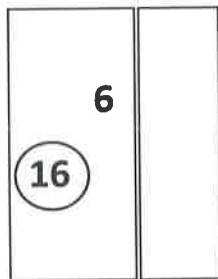
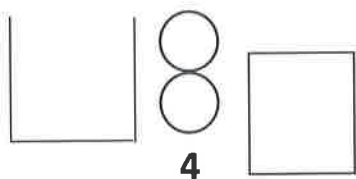
Complete terms and conditions of sale will be available at the time of sale. All information was obtained from sources deemed reliable. Although every precaution has been taken to ensure accuracy, the principal, the James G. Murphy Co., the advertising coordinator, and all of their agents shall not be responsible for any errors or omissions therein. It is for this reason that we recommend that all items be thoroughly inspected prior to the point of sale.

James G. Murphy Co.

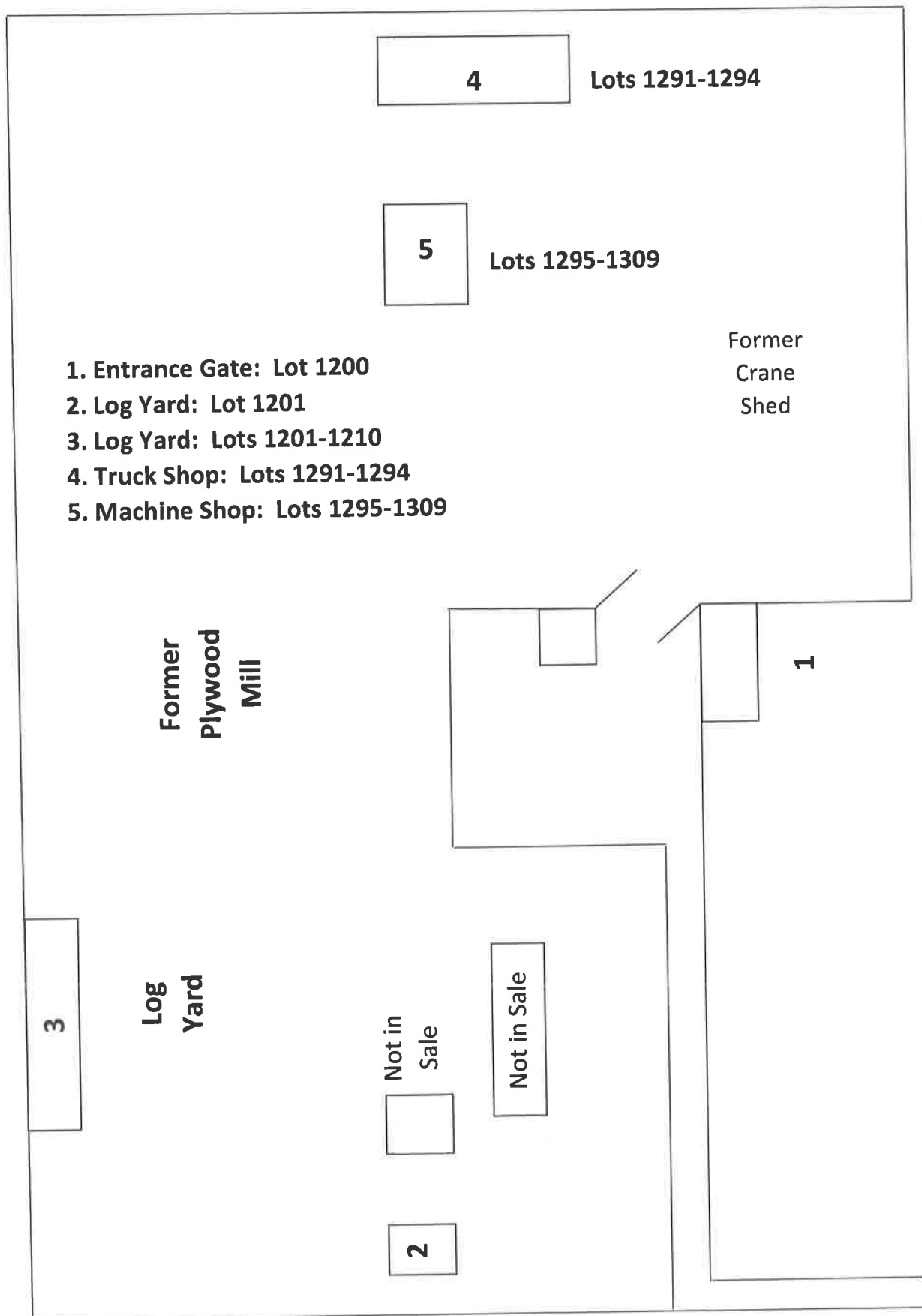
PO Box 82160 KENMORE, WA 98028 ~ 1-800-426-3008 ~ murphyauction.com

Colville Indian Precision Pine Map Legend

1. Office Area: Lots 976-983 and Manuals
2. Mechanics Shop Area: Lots 1-130, 1079, 1086-1140B
3. Sawmill Area: Lots 200-647 & 901-975
4. Boiler & Silos Area: Lots 648-660
5. Lumber Storage Building: Lots 661-665
6. Kilns-Cooling Shed-Carts: Lots 671-684
7. Planer Area: Lots 685-750 & 764-898
8. Hog Area: Lots 751-764
9. Rolling Stock & Accessories: Lots 138A-146 (Lot 147 located in Building 13)
10. Rolling Stock Attachments: Lots 165-182
11. Rolling Stock: Lots 131-137 & 1147-1148
12. Machine Shop Area: Lots 986-1036
13. Millwrights Shop Area: Lots 1037-1065 & 147 (inside); Lots 1066-1078 (outside)
14. Scales-Pump House Area: Lots 1080-1085
15. Porta-Potty Bathrooms
16. Smoking Areas
17. Note: Lots 1200-1211 & 1291-1309 are located at the Plywood Mill site at 1100 8th Avenue in Omak



10



4

Lots 1291-1294

5

Lots 1295-1309

Former
Crane
Shed

- 1. Entrance Gate: Lot 1200
- 2. Log Yard: Lot 1201
- 3. Log Yard: Lots 1201-1210
- 4. Truck Shop: Lots 1291-1294
- 5. Machine Shop: Lots 1295-1309

Former
Plywood
Mill

Log
Yard

3

Not in
Sale

Not in Sale

2

1



James G. Murphy Co.
P.O. Box 82160
Kenmore, WA 98028
1-800-426-3008
murphyauction.com

CIPP COLVILLE INDIAN PRECISION PINE - ONLINE ONLY 9/30/2020-10/7/2020

LOT #

1 THERMAL DYNAMICS 300GMS

DC INVERTER ARC WELDER W/TA2 WIRE FEEDER,
LEADS, GUN & CART (30 DAY REMOVAL PERIOD)

2 LINCOLN IDEALARC R3R-400

DC WELDER (30 DAY REMOVAL PERIOD)

**3 LOT, OXY/ACETYLENE, TORCH, GAUGES &
(2)**

CARTS (1
CART HAS NO WHEELS. 30 DAY REMOVAL PERIOD.)

4 RIDGID 300

PIPE THREADER W/916 POWERED ROLL GROOVER
ON NO. 1216 TRI-STAND W/FOOT PEDAL (30 DAY
REMOVAL PERIOD)
VIN / Serial: 752949

5 RIDGID 535

PIPE THREADER ON CART W/PIPE CUTTER, REAMER
& ASSORTED DIES (30 DAY REMOVAL PERIOD)
VIN / Serial: 334156

6 RIDGID NO. 450

TRI-STAND (30 DAY REMOVAL PERIOD)

7 GREENLEE 1818

BENDER, 1/2"-2" CAPACITIES W/3/4", 1-1/4" & 2"
SHOES (30 DAY REMOVAL PERIOD)
VIN / Serial: NR10254FM

8 SWEED 505AD

SCRAP CHOPPER ON STAND W/WHEELS (30 DAY
REMOVAL PERIOD)
VIN / Serial: 12893

LOT #

9 TECHGUARD SOLAR 5060H

COOLING SYSTEM SERVICE CENTER FOR HOT OR
COLD COOLANT, TRIPLE FILTER, 72 QT CAPACITY,
110V (30 DAY REMOVAL PERIOD)
VIN / Serial: H290494

10 HYDRAULIC WHEEL DOLLY

(30 DAY REMOVAL PERIOD)

11 GREENLEE 4860

PIANO BOX JOB BOX, 48"H X 60"L X 30"W, 50 CU FT
(30 DAY REMOVAL PERIOD)

12 COTTERMAN

3' ROLLING WAREHOUSE LADDER (30 DAY
REMOVAL PERIOD)

**13 ELECTRICAL DISPLAY TEST STATION
W/CUTLER HAMMER**

30 AMP/600V DISCONNECT (30 DAY REMOVAL
PERIOD)

**14A LOT, (2) SELLSTROM EYEWASH STATIONS (1
UNUSED IN
BOX. 30 DAY REMOVAL PERIOD.)**

14B LOT, (2) SAS EYEWASH STATIONS

(30 DAY REMOVAL PERIOD)

15 LOT, ASSORTED TOOLS

(30 DAY REMOVAL PERIOD)

CIPP COLVILLE INDIAN PRECISION PINE - ONLINE ONLY 9/30/2020-10/7/2020

LOT #	LOT #
16 LOT, ASSORTED LEADS & TORCHES (30 DAY REMOVAL PERIOD)	27 LOT, CAN-AM 2060H CHAIN (50' PER BOX. 30 DAY REMOVAL PERIOD)
17 OXY/ACETYLENE HOSE (30 DAY REMOVAL PERIOD)	28 LOT, CAN-AM 2060H CHAIN (50' PER BOX. 30 DAY REMOVAL PERIOD)
18 LOT, (2) SAFETY HARNESES (30 DAY REMOVAL PERIOD)	29 LOT, CAN-AM 2060H CHAIN (50' PER BOX. 30 DAY REMOVAL PERIOD)
19 LOT, (2) SAFETY HARNESES (30 DAY REMOVAL PERIOD)	30 LOT, CAN-AM 2060H CHAIN (50' PER BOX. 30 DAY REMOVAL PERIOD)
20 LOT, (2) SAFETY HARNESES (30 DAY REMOVAL PERIOD)	31 LOT, WHITNEY 140RIV CHAIN, 10' (30 DAY REMOVAL PERIOD)
21 LOT, (2) SAFETY HARNESES (30 DAY REMOVAL PERIOD)	32 LOT, CAN-AM 80-1ST-TF CHAIN, 10' (30 DAY REMOVAL PERIOD)
22 LOT, (2) SAFETY HARNESES (30 DAY REMOVAL PERIOD)	33 LOT, 81X CHAIN, 40' (30 DAY REMOVAL PERIOD)
23 LOT, (2) SAFETY HARNESES (30 DAY REMOVAL PERIOD)	34 LOT, 81XH CHAIN, 30' (30 DAY REMOVAL PERIOD)
24 LOT, CAN-AM 2060H CHAIN (50' PER BOX) (30 DAY REMOVAL PERIOD)	35 LOT, ELITE 81XH CHAIN, 40' (30 DAY REMOVAL PERIOD)
25 LOT, CAN-AM 2060H CHAIN (50' PER BOX) (30 DAY REMOVAL PERIOD)	36 LOT, CAN-AM 81X CHAIN, 20' (30 DAY REMOVAL PERIOD)
26 LOT, CAN-AM 2060H CHAIN (50' PER BOX. 30 DAY REMOVAL PERIOD)	37 LOT, HKK & WHITNEY 120-1R CHAIN, 40' (30 DAY REMOVAL PERIOD)

CIPP COLVILLE INDIAN PRECISION PINE - ONLINE ONLY 9/30/2020-10/7/2020

LOT #	LOT #
38 LOT, HKK & USA DRIVES 160-1R CHAIN, 20'	49 LOT, MORSE BL866-119P CHAIN, 40'
(30 DAY REMOVAL PERIOD)	(30 DAY REMOVAL PERIOD)
39 LOT, DIAMOND C2060H RIVETED CHAIN, 70'	50 LOT, HKK 120-2C CHAIN, 10'
(30 DAY REMOVAL PERIOD)	(30 DAY REMOVAL PERIOD)
40 LOT, LYNX C2060H-1R CHAIN, 30'	51 FROMM
(30 DAY REMOVAL PERIOD)	14.4V RECHARGEABLE PLASTIC BANDER W/BATTERY (NO CHARGER, 30 DAY REMOVAL PERIOD)
41 LOT, TSUBAKI C2080H CHAIN, 80'	52 SIGNODE HN-1-114
(30 DAY REMOVAL PERIOD)	1-1/4" PNEUMATIC BANDER (30 DAY REMOVAL PERIOD)
42 LOT, TSUBAKI RS80-2RP CHAIN, 20'	53 RAPZ PHD-1
(30 DAY REMOVAL PERIOD)	1-1/4" PNEUMATIC BANDER (30 DAY REMOVAL PERIOD)
43 LOT, TSUBAKI RS50RIV CHAIN, 40'	54 RAPZ PHD-1
(30 DAY REMOVAL PERIOD)	1-1/4" PNEUMATIC BANDER (30 DAY REMOVAL PERIOD)
44 LOT, TSUBAKI RS60RIV CHAIN, 40'	61 HYDRAULIC MOTOR OR PUMP
(30 DAY REMOVAL PERIOD)	(30 DAY REMOVAL PERIOD)
45 LOT, HKK 80-1R CHAIN, 30'	62 HYDRAULIC MOTOR OR PUMP
(30 DAY REMOVAL PERIOD)	(30 DAY REMOVAL PERIOD)
46 LOT, HKK 80-2R CHAIN, 20'	63 HYDRAULIC MOTOR OR PUMP
(30 DAY REMOVAL PERIOD)	(30 DAY REMOVAL PERIOD)
47 LOT, USA DRIVES 100H-1R CHAIN, 10'	64 HYDRAULIC MOTOR OR PUMP
(30 DAY REMOVAL PERIOD)	(30 DAY REMOVAL PERIOD)
48 LOT, RENOLD 60-2RIV CHAIN, 10'	
(30 DAY REMOVAL PERIOD)	

CIPP COLVILLE INDIAN PRECISION PINE - ONLINE ONLY 9/30/2020-10/7/2020

LOT #	LOT #
65 HYDRAULIC MOTOR OR PUMP (30 DAY REMOVAL PERIOD)	76 HYDRAULIC MOTOR OR PUMP (30 DAY REMOVAL PERIOD)
66 HYDRAULIC MOTOR OR PUMP (30 DAY REMOVAL PERIOD)	77 HYDRAULIC MOTOR OR PUMP (30 DAY REMOVAL PERIOD)
67 HYDRAULIC MOTOR OR PUMP (30 DAY REMOVAL PERIOD)	78 HYDRAULIC MOTOR OR PUMP (30 DAY REMOVAL PERIOD)
68 HYDRAULIC MOTOR OR PUMP (30 DAY REMOVAL PERIOD)	79 HYDRAULIC MOTOR OR PUMP (30 DAY REMOVAL PERIOD)
69 HYDRAULIC MOTOR OR PUMP (30 DAY REMOVAL PERIOD)	80 HYDRAULIC MOTOR OR PUMP (30 DAY REMOVAL PERIOD)
70 HYDRAULIC MOTOR OR PUMP (30 DAY REMOVAL PERIOD)	81 HYDRAULIC MOTOR OR PUMP (30 DAY REMOVAL PERIOD)
71 HYDRAULIC MOTOR OR PUMP (30 DAY REMOVAL PERIOD)	82 HYDRAULIC MOTOR OR PUMP (30 DAY REMOVAL PERIOD)
72 HYDRAULIC MOTOR OR PUMP (30 DAY REMOVAL PERIOD)	83 HYDRAULIC MOTOR OR PUMP (30 DAY REMOVAL PERIOD)
73 HYDRAULIC MOTOR OR PUMP (30 DAY REMOVAL PERIOD)	84 HYDRAULIC MOTOR OR PUMP (30 DAY REMOVAL PERIOD)
74 HYDRAULIC MOTOR OR PUMP (30 DAY REMOVAL PERIOD)	85 HYDRAULIC MOTOR OR PUMP (30 DAY REMOVAL PERIOD)
75 HYDRAULIC MOTOR OR PUMP (30 DAY REMOVAL PERIOD)	86 LOT, (5) ASSORTED HYDRAULIC MOTORS OR PUMPS (30 DAY REMOVAL PERIOD)

CIPP COLVILLE INDIAN PRECISION PINE - ONLINE ONLY 9/30/2020-10/7/2020

LOT #	LOT #
87 LOT, (5) ASSORTED HYDRAULIC MOTORS OR PUMPS (30 DAY REMOVAL PERIOD)	95 LOT, (5) JOYSTICK CONTROLLERS W/CONTROL BOX (30 DAY REMOVAL PERIOD)
88 LOT, (5) ASSORTED HYDRAULIC MOTORS OR PUMPS (30 DAY REMOVAL PERIOD)	96 LOT, LINEMASTER HERCULES 531-SWH & (1) 531-SWN FOOT SWITCHES (UNUSED) W/(6) ASSORTED USED FOOT SWITCHES & (4) UNUSED COVERS (30 DAY REMOVAL PERIOD)
89 LOT, (5) ASSORTED HYDRAULIC MOTORS OR PUMPS (30 DAY REMOVAL PERIOD)	97 LOT, 48" & 36" WAGNER L712 WOOD FRIENDLY STACKER PROBES W/(3) WAGNER L601-3 WOOD FRIENDLY DIGITAL MOISTURE METERS (30 DAY REMOVAL PERIOD)
90 LOT, (5) ASSORTED HYDRAULIC MOTORS OR PUMPS (30 DAY REMOVAL PERIOD)	98 LOT, (2) LASER VISION & (1) LACEY HARMER LASERS (30 DAY REMOVAL PERIOD)
91 LOT, YASKAWA AC DRIVE 1000 COMPACT VECTOR CONTROL DRIVE W/TOUCH PAD CONTROLS (UNUSED IN BOX) & DELTA VDF-B 2 HP FREQUENCY DRIVE W/REMOVABLE TOUCH PAD CONTROLLER (30 DAY REMOVAL PERIOD)	99 LOT, (5) ASSORTED TEMPOSONIC CONTROLLERS W/WANDS (30 DAY REMOVAL PERIOD)
92 LOT, ALLEN BRADLEY 513 COMBINATION CONTROLLER W/509-B0H SIZE 1 STARTER & WESTINGHOUSE 50 AMP SERIES C-TYPE HMCP BREAKER (UNUSED) W/(2) SQUARE D 30 AMP/600V DISCONNECTS (UNUSED, 30 DAY REMOVAL PERIOD)	100 LOT, (15) ASSORTED TEMPOSONIC CONTROLLERS (30 DAY REMOVAL PERIOD)
93 LOT, (1) CUTLER HAMMER 300 AMP, (3) 250 AMP, (1) 7 AMP & (6) 3 AMP ADJUSTABLE TRIP BREAKERS (30 DAY REMOVAL PERIOD)	101 LOT, ASSORTED TEST EQUIPMENT (30 DAY REMOVAL PERIOD)
94 LOT, (2) ALLEN BRADLEY 2113B MCC BUCKETS W/SIZE 1, 10 HP & 3 HP STARTERS, CH 30 AMP & 15 AMP BREAKERS (30 DAY REMOVAL PERIOD)	102A LOT, ASSORTED HYDRAULIC VALVES (30 DAY REMOVAL PERIOD)
	102B LOT, ASSORTED HYDRAULIC VALVES (30 DAY REMOVAL PERIOD)
	103 INDUSTRIAL INTERCOM 27A-7 MILL INTERCOM (30 DAY REMOVAL PERIOD)

CIPP COLVILLE INDIAN PRECISION PINE - ONLINE ONLY 9/30/2020-10/7/2020

LOT #**104 CHROMALOX CATALOG #ARMTO-215511**

1-1/2 KW, SINGLE PHASE TANK HEATER (30 DAY
REMOVAL PERIOD)

105A MILLER FALCO

SELF-RETRACTING LIFE LINE, 318 LB MAX (30 DAY
REMOVAL PERIOD)

**105B LOT, (3) WILTON NO. 12 HEAVY DUTY
CLAMPS**

(30 DAY REMOVAL PERIOD)

**106 APPROX 1-1/4"THICK X 66"W X 96"L STEEL
TABLE W/8"**

SWIVEL BASE VISE (MUST WAIT UNTIL EMPTY TO
REMOVE, 30 DAY REMOVAL PERIOD)

**107 APPROX 3/4"THICK X 60"W X 96"L STEEL
TABLE**

W/SWING OUT SEAT (MUST WAIT UNTIL EMPTY TO
REMOVE, 30 DAY REMOVAL PERIOD)

**108 APPROX 1"THICK X 48"W X 96"L STEEL
TABLE (MUST
WAIT UNTIL EMPTY TO REMOVE, 30 DAY REMOVAL
PERIOD)****109 APPROX 1-1/2"THICK X 41"W X 91"L STEEL
TABLE W/J.
PARKER 6" SWIVEL BASE VISE (MUST WAIT UNTIL
EMPTY TO REMOVE, 30 DAY REMOVAL PERIOD)****110 APPROX 1/2"THICK X 48"W X 50"L STEEL
TABLE (MUST
WAIT UNTIL EMPTY TO REMOVE, 30 DAY REMOVAL
PERIOD)****111 LEMPCO SERIES 400A**

60-TON HYDRAULIC OPERATED SHOP PRESS
W/APPROX 10 HP MOTOR, 36"X48" OPENING (NO
ELECTRICS, 30 DAY REMOVAL PERIOD)
VIN / Serial: 931MP0174

LOT #**112 DAYCO NP-60**

HYDRAULIC HOSE CRIMPER W/DIES, HOSE
FITTINGS & WOOD BENCH (30 DAY REMOVAL
PERIOD)

113 CAT

150-TON HYDRAULIC HOSE CRIMPER W/DIES, 2
HP/1,725 RPM MOTOR, SINGLE PHASE (30 DAY
REMOVAL PERIOD)

**114 HYDRAULIC HOSE CUT OFF SAW W/3
HP/3,450 RPM
MOTOR, 260V, SINGLE PHASE W/GRAVITY
ROLLCASE (30 DAY REMOVAL PERIOD)****115 LOT, ASSORTED HYDRAULIC FITTINGS ON
THESE (2)
WOOD SHELVES (30 DAY REMOVAL PERIOD)****116 LOT, ASSORTED NUTS & BOLTS IN THESE
METAL
BINS &
PARTS TRAYS (30 DAY REMOVAL PERIOD)****117 EAGLE 1947**

45 GALLON FLAMMABLES CABINET (30 DAY
REMOVAL PERIOD)

**118 APPROX 16' ALUMINUM STRAIGHT EDGE

(30 DAY REMOVAL PERIOD)****119 WERNER**

28' FIBERGLASS EXTENSION LADDER (30 DAY
REMOVAL PERIOD)

120 WERNER

12' FIBERGLASS STEP LADDER (30 DAY REMOVAL
PERIOD)

CIPP COLVILLE INDIAN PRECISION PINE - ONLINE ONLY 9/30/2020-10/7/2020

LOT #**121 WERNER**

10' FIBERGLASS STEP LADDER (30 DAY REMOVAL PERIOD)

122 LOT, (2) 8' FIBERGLASS STEP LADDERS

(30 DAY REMOVAL PERIOD)

123 LOT, (2) 6' FIBERGLASS STEP LADDERS

(30 DAY REMOVAL PERIOD)

124 LOT, ASSORTED ALUMINUM PIKE POLES

(30 DAY REMOVAL PERIOD)

125 LOT, ASSORTED ALUMINUM PIKE POLES

(30 DAY REMOVAL PERIOD)

126 LOT, ASSORTED LOG PEAVY'S

(30 DAY REMOVAL PERIOD)

127 LOT, ASSORTED PICAROONS

(30 DAY REMOVAL PERIOD)

128 LOT, ASSORTED PICAROONS

(30 DAY REMOVAL PERIOD)

129 DAYTON

24" FLOOR FAN W/1/4 HP/1,100 RPM, 115V, SINGLE PHASE (30 DAY REMOVAL PERIOD)

130 STIHL FS40C

GAS POWERED WEED EATER (BOUGHT NEW SEPT. 2020 BY THE JAMES G MURPHY CO, 30 DAY REMOVAL PERIOD)

LOT #**131 2008 CAT 988H**

RUBBER TIRE LOG LOADER W/MEDFORD LOG FORKS, ACERT 18 TIER-3 501 HP DIESEL ENGINE, S/N:RHX06947, VARIABLE SHIFT CONTROL, 130 GPM HYDRAULICS, 4-SPEED FORWARD, 3-SPEED REVERSE TRANSMISSION, 35/65-33 TIRES, HOUR METER READS: 20,618 (RECENT PUMP, HOSE, FLUIDS & BATTERIES REPLACED AUG. 16-20 BY NC MACHINERY, RECORDS AVAILABLE)
VIN / Serial: CAT988HHBXY02565

132 2000 CAT 988F SERIES II

RUBBER TIRE LOG LOADER W/MEDFORD LOG FORKS, CAT 3408ETA 675 HP DIESEL ENGINE, 4-SPEED FORWARD, 3-SPEED REVERSE TRANSMISSION, 35-65/33 TIRES, HOUR METER READS: 26,626 (NEW BATTERIES & FLUIDS AUG. 20)
VIN / Serial: 2ZR02312

133 VOLVO L90

RUBBER TIRE LOG LOADER W/PSM FORKS, VOLVO D6J 156 HP DIESEL ENGINE, 20.5R25 TIRES, HOUR METER READS: 8,002 (REPLACED NON-MATCHING USED TIRE, NEW BATTERIES & FLUIDS AUG. 20)
VIN / Serial: VCE0L90GT0S617443

134 CAT 322CFM

TRACK MOUNTED HEEL BOOM LOG LOADER W/CAT 3126TA 174 HP DIESEL ENGINE, CAB & BOOM GUARDS, 27-1/2" DOUBLE GROUSER TRACKS, HOUR METER READS: 18,320 (NEW BATTERIES & FLUIDS AUG. 20, ON BOARD COMPUTER ISSUES)
VIN / Serial: CAT0322CCCEBY00196

135A 2004 VOLVO EC330BLC

TRACK MOUNTED HEEL BOOM LOG LOADER W/VOLVO DC12 198 HP DIESEL ENGINE, JEWELL BOOM, CAB & CYLINDER GUARDS, HOUR METER READS: 14,229 (NEW BATTERIES & FLUIDS AUG. 20)
VIN / Serial: EC330V10248

CIPP COLVILLE INDIAN PRECISION PINE - ONLINE ONLY 9/30/2020-10/7/2020

LOT #**135B VOLVO EC290LC**

TRACK MOUNTED HEEL BOOM LOG LOADER
W/CUMMINS C8.3-C 197 HP DIESEL ENGINE, PIERCE
BOOM, CAB & CYLINDER GUARDS, HOUR METER
READS: 21,328 (NEW FLUIDS AUG. 20)
VIN / Serial: EC290LC09392

136 SHUTTLELIFT 5560RT

ROUGH TERRAIN CARRY DECK CRANE, 15-TON,
4-SECTION, 50-1/2' BOOM, 10-TON CARRY DECK, GM
4.3L V6 PROPANE ENGINE, 4-SPEED
FORWARD/REVERSE POWERSHIFT TRANSMISSION,
2-WHEEL, CRAB & 4-WHEEL STEERING, HOUR
METER READS: 3,987 (NEW BATTERY AUG. 20)
VIN / Serial: 1155100

137 CAT 12F

MOTOR GRADER W/12' MOLD BOARD W/CUTTING
EDGE, CAT 6-CYL DIESEL ENGINE, 15.00R24 TIRES,
HOUR METER READS: N/A (DOES NOT RUN, (1) FLAT
TIRE)
VIN / Serial: 81H9348

138A CAT 216B

SKID STEER LOADER, CAT 3024C 52 HP, CAT 62"
BUCKET, 42" FORKS, HOUR METER READS: N/A
(NEW BATTERY & FLUIDS AUG. 20)
VIN / Serial: CAT0216BHRLL01512

138B CAT BP15

60" SWEEPER ATTACHMENT

139 HYSTER H210HD

18,350 LB CAPACITY FORKLIFT, DIESEL, 212.6"
2-STAGE MAST W/FORKS POSITIONER, SIDE SHIFT,
DUAL PNEUMATIC TIRES, HOUR METER READS: N/A
(FORK PLACER ISSUES)
VIN / Serial: F007E01752Z

140 HYSTER H190HD

17,600 LB CAPACITY FORKLIFT, DIESEL, 212.6"
2-STAGE MAST W/FORK POSITIONERS, SIDE SHIFT,

LOT #

DUAL PNEUMATIC TIRES, HOUR METER READS: N/A
(BRAKE ISSUES, NEW BATTERY & FLUIDS)
VIN / Serial: F007E02636A

141 CAT DP80

9,500 LB CAPACITY FORKLIFT, DIESEL, 217.2"
2-STAGE MAST W/SIDE SHIFT, DUAL PNEUMATIC
TIRES, HOUR METER READS: N/A (DOES NOT RUN)
VIN / Serial: 1DP00062

142 CAT DP80

9,500 LB CAPACITY FORKLIFT, DIESEL, 217.2"
2-STAGE MAST W/SIDE SHIFT, DUAL PNEUMATIC
TIRES, HOUR METER READS: N/A (DOES NOT RUN)
VIN / Serial: 1DP00011

143 CAT V180B

18,000 LB CAPACITY FORKLIFT, 218" 2-STAGE MAST
W/SIDE SHIFT, PNEUMATIC FORKS, HOUR METER
READS: N/A (DOES NOT RUN)
VIN / Serial: 9AF00362

144 CAT V180B

18,000 LB CAPACITY FORKLIFT, 218" 2-STAGE MAST
W/SIDE SHIFT, PNEUMATIC FORKS, HOUR METER
READS: N/A (DOES NOT RUN)
VIN / Serial: N/A

145 CAT V180B

18,000 LB CAPACITY FORKLIFT, 218" 2-STAGE MAST
W/SIDE SHIFT, PNEUMATIC FORKS, HOUR METER
READS: N/A (DOES NOT RUN)
VIN / Serial: N/A

146 HYSTER SPACESAVER 50

FORKLIFT, GAS, 3-STAGE MAST, SOLID TIRES (DOES
NOT RUN)

147 JLG 40F

APPROX 1,000 LB CAPACITY MAN LIFT, 40' REACH,
WISCONSIN PROPANE, HOUR METER READS: 2,125
(DOES NOT RUN)

CIPP COLVILLE INDIAN PRECISION PINE - ONLINE ONLY 9/30/2020-10/7/2020

LOT #**148 USBR**

1,000 LB CAPACITY, 15' ELECTRIC SCISSOR LIFT
(DOES NOT RUN)

165 BALDERSON

TOP CLAMP LOG GRAPPLES, APPROX 8' WIDE

**166 108" WIDE SCOOP BUCKET W/APPROX 10" WIDE POCKETS
X 89" CENTER-TO-CENTER****167 ROTARY GRAPPLES, APPROX 40" FROM PIN TO GRAPPLE
TIP, APPROX 73" OVERALL HEIGHT****168 CAT**

FORKLIFT, 2-STAGE MAST W/CYLINDERS W/CHAIN CARRIER & FORK CARRIAGE (NO FORKS)

169 APPROX 39"W X 216"L FORKLIFT BANDING PLATFORM

W/32" RAIL, BAR GRATING FLOOR & FORK POCKETS

**170 APPROX 47"W X 83"L MAN BASKET W/36" RAILS, BAR
GRATING FLOOR & FORK POCKETS****171 APPROX 48"W X 48"L CRANE BASKET W/42" RAILS &
4-WAY CRANE SLING****172 APPROX 48"D X 54"H X 12'L STEEL DUMP BOX W/SWING
OUT FRONT GATE & FORK POCKETS****173 APPROX 42"D X 48"H X 96"L OPEN FRONT STEEL
DUMP BOX
W/FORK HOOKS****LOT #****174 APPROX 116" STEEL LOADER SCRAP BUCKET****175 APPROX 1-1/4"THICK X 48"W X 48"L FORKLIFT BUMP
PLATE W/FORK POCKETS****176 SIDE MOUNT FORKLIFT REACH W/POCKETS****177 SET OF 8"X60" FORKS****178 15"X54" FORKS****179 ACE ROTO MOLD**

500 GALLON POLY TANK

180 CHEMCO WATER TECH

700 GALLON POLY TANK

181 APPROX 210 GALLON POLY TANK**181B TOYO 35/65 TIRE****181C BF GOODRICH 11R24.5 TIRE****182 MORBARK 20**

TOTAL CHIPARVESTER W/CUMMINS VT-905 DIESEL ENGINE, TURN KNIFE, 7/8" CHIPPER, TELESCOPING BOOM W/ROTARY GRAPPLES, CAB & CONTROLS, MOUNTED ON T/A TRAILER
VIN / Serial: 20148

183 CUMMINS

6-CYL DIESEL ENGINE

184 TRANSMISSION W/CONVERTER, PART NO.'S 92228-10100

& 64X4063

CIPP COLVILLE INDIAN PRECISION PINE - ONLINE ONLY 9/30/2020-10/7/2020

LOT #	LOT #
185 CAT	POLE TRANSFORMERS, NO OVERHEAD WIRE, NO WIRE IN ANY ELECTRICAL ENCLOSURES. PLEASE CONSULT AUCTION SITE REP PRIOR TO BID
TRANSMISSION, TRANS GROUP NO. 8E9463	
186 3-CYL DIESEL ENGINE	201 APPROX 14' 6-STRAND H132 INFEED LOG DECK TO 27" DEBARKER, S-DRIVE, STEEL PLATE & SUPPORTS TO GROUND (DRIVE FOR MOTOR SOLD AT LOT 243)
187 AXLE HOUSING	
188 STEERING ASSEMBLY	202 APPROX 10' 6-STRAND SPLIT INFEED LOG DECK TO 27" DEBARKER, S-DRIVE, STEEL PLATE & SUPPORTS TO GROUND (DRIVE MOTORS SOLD AT LOTS 244 & 245)
189 STEERING ASSEMBLY	
190 LOT, ASSORTED CYLINDERS ON THIS PALLET	203 LINDEN STYLE HYDRAULIC OPERATED 16' 4-STEP LOG FEEDER (NO SUPPORTS TO GROUND, HYDRAULIC UNIT SOLD AT LOT 242)
191 LOT, FORKLIFT MAST CHAIN ON THIS PALLET	
192 LOT, ASSORTED MACHINE PARTS ON THESE (3) PALLETS	204 LINDEN STYLE HYDRAULIC OPERATED 16' 4-STEP LOG FEEDER (NO SUPPORTS TO GROUND, HYDRAULIC UNIT SOLD AT LOT 242)
193 LOT, ASSORTED MACHINE PARTS ON THESE (3) PALLETS	
194 LOT, ASSORTED HYDRAULIC HOSE ON THIS PALLET	205 SERCO 1000 HYDRAULIC OPERATED PEDESTAL MOUNT LOG LOADER W/40" SWIVEL ROTARY GRAPPLES, CONTROLS IN CAB (SHARED HYDRAULICS)
195 LOT, ASSORTED HYDRAULIC HOSE ON THIS PALLET	
196 LOT, ASSORTED HYDRAULIC HOSE ON THIS PALLET	206 L&M 72" INSERT TOOTH WHOLE LOG CUT OFF SAW W/75 HP/1,180 RPM MOTOR, LOG CRADLES & HOLD DOWNS (NO SUPPORT STEEL, SPARE SAWS SOLD AT LOTS 564 & 565)
197 LOT, ASSORTED HYDRAULIC HOSE ON THESE (2) PALLETS	
198 LOT, ASSORTED HYDRAULIC HOSE ON THESE (2) PALLETS	207 APPROX 50' 6"X12" BOX CHAIN INFEED LOG HAUL W/STEEL TROUGH (NO SUPPORTS)
200 LOT, WIRE & CONDUIT THROUGHOUT MILL SITE FROM ALL TRANSFORMERS AT SAWMILL, BOILER HOUSE & PLANER MILL (DOES NOT INCLUDE ANY PAD OR	

CIPP COLVILLE INDIAN PRECISION PINE - ONLINE ONLY 9/30/2020-10/7/2020

LOT

208 APPROX 20' 6"X12" BOX CHAIN OUTFEED LOG HAUL
W/(5) LOG STOPS & SWEEP ARM, STEEL TROUGH & CATWALKS (NO SUPPORTS TO GROUND)

209 BALDOR

30 HP MOTOR TO SKK 100 RPM REDUCER W/DRIVE CHAIN (DRIVE FOR LOT 207)

210 WEG

15 HP MOTOR TO SKK 100 RPM REDUCER W/DRIVE CHAIN (DRIVE FOR LOT 208)

211 APPROX 27' 4-STRAND 6"X6" H-CHAIN LOG TRANSFER

DECK TO 27" DEBARKER, H-SHAFT, STEEL PLATE (NO SUPPORTS TO GROUND)

212 APPROX 20' 9-ARM LS&L W/SHAFT & BEARINGS**213 1994 NICHOLSON A5A**

27" LH 6-ARM HIGH SPEED RING DEBARKER W/AIR SEAL RING, WESTINGHOUSE 100 HP/1,180 RPM RING DRIVE MOTOR, LEESON 40 HP MOTOR TO SM CYCLO 11:1 REDUCER FEED DRIVE, (3) INFEED & (3) OUTFEED ROLLS, LARGE LOG BYPASS, CAB & CONTROLS, GREASE PUMP & AIR TANK (NO SUPPORTS TO GROUND, OWNER MAY REMOVE ROOF IN LIKE CONDITION FOR REMOVAL. SPARE PARTS SOLD AT LOT 924)
VIN / Serial: 9432

214 APPROX 32' 6"X6" H-CHAIN W/FLITES INFEED LOG
HAUL, S-DRIVE, STEEL TROUGH (NO SUPPORTS TO GROUND, DRIVE MOTOR SOLD AT LOT 231)

215 APPROX 70' 6"X6" H-CHAIN OUTFEED LOG HAUL
W/4 &
5-ARM KICKERS, S-DRIVE, STEEL TROUGH (NO SUPPORTS TO GROUND, DRIVE MOTOR SOLD AT LOT 239B)

LOT

216 APPROX 32'H X 32'W X 18'L ALL STEEL COVER OVER
DEBARKER (OWNER OF DEBARKER MAY REMOVE ROOF IN LIKE CONDITION FOR REMOVAL)

217 16' 3-TON BRIDGE CRANE W/BUDGIT 3-TON CABLE

HOIST, PENDANT CONTROLS

218 MILLER GOLDSTAR 400SS

WELDER (NO LEADS)

219 LOT, MARKED LOG DECK AREA
SUBSTRUCTURE W/MARKED DECKING, CATWALKS, STAIRS, CONVEYOR SLOPING, AIR, WATER & HYDRAULIC PIPING TO MILL BUILDING (NO CONDUIT OR WIRE)

220 JEFFREY 56WBSS

HAMMER HOG W/COUPLER, SS 9" ROTOR SHAFT W/40"X41" OVERALL ROTOR, 54"X45" OPENING, MARKED SUPPORTS, CATWALK & STAIRS
VIN / Serial: 886828

221 TOSHIBA

300 HP/1,180 RPM MOTOR W/DISCONNECT & WIRE BETWEEN

222 APPROX 40' 8"X15" BOX CHAIN W/FLITES INFEED

CONVEYOR, S-DRIVE, STEEL TROUGH & RETURN

223 APPROX 50' 6"X12" BOX CHAIN W/FLITES, S-DRIVE,

STEEL TROUGH & RETURN

224 APPROX 30' 6"X12" BOX CHAIN W/FLITES, H&T DRUMS,
STEEL TROUGH & RETURN

CIPP COLVILLE INDIAN PRECISION PINE - ONLINE ONLY 9/30/2020-10/7/2020

LOT #	LOT #
225 SKK	235 APPROX 100' 6"X12" BOX CHAIN W/FLITES CLEAN OUT CONVEYOR W/H&T DRUMS, STEEL TROUGH & RETURN (NO SLOPE SHEETING)
7-1/2 HP/25 RPM DOUBLE REDUCTION GEARHEAD MOTOR W/DRIVE CHAIN (DRIVE FOR LOT 222)	
226 SKK	236 SKK
7-1/2 HP/25 RPM DOUBLE REDUCTION GEARHEAD MOTOR W/DRIVE CHAIN (DRIVE FOR LOT 223)	15 HP/45 RPM GEARHEAD DRIVE MOTOR W/DRIVE CHAIN (DRIVE FOR LOT 232)
227 SKK	237 SKK
GEARHEAD DRIVE MOTOR (NO DATA) W/DRIVE CHAIN (DRIVE FOR LOT 224)	GEARHEAD DRIVE MOTOR (NO DATA) W/DRIVE CHAIN (DRIVE FOR LOT 233)
228 APPROX 50-UNIT HYDRAULIC OPERATED MONO BIN W/(2) 16' GATES, HYDRAULIC UNIT	238 SKK
	7-1/2 HP/20 RPM GEARHEAD DRIVE MOTOR W/DRIVE CHAIN (DRIVE FOR LOT 234)
229 APPROX 30-UNIT HYDRAULIC OPERATED BIN W/20'	239A SKK
GATES, HYDRAULIC UNIT	5 HP/45 RPM GEARHEAD DRIVE MOTOR W/DRIVE CHAIN (DRIVE FOR LOT 235)
230 APPROX 40-UNIT HYDRAULIC OPERATED BIN W/23' GATES	239B SKK
	GEARHEAD DRIVE MOTOR (NO DATA) W/DRIVE CHAIN (DRIVE FOR LOT 215)
231 SKK	240 LOT, ASSORTED PARTIAL ELECTRICS IN THIS ROOM (NO WIRE OUTSIDE OF BOX)
10 HP/56 RPM GEARHEAD DRIVE MOTOR W/DRIVE CHAIN (DRIVE FOR LOT 214)	
232 APPROX 100' 6"X12" BOX CHAIN W/FILTERS CLEAN OUT CONVEYOR W/H&T DRUMS, STEEL TROUGH & RETURN (NO SLOPE SHEETING)	241 SAS
	HYDRAULIC UNIT W/(2) 50 HP MOTORS, PIPING IN ROOM, MARKED ELECTRICS VIN / Serial: 344
233 APPROX 35' 6"X12" BOX CHAIN W/FLITES CLEAN OUT CONVEYOR W/H&T DRUMS, STEEL TROUGH & RETURN (NO SLOPE SHEETING)	242 SAS
	HYDRAULIC UNIT W/(2) 50 HP MOTORS, PIPING IN ROOM, MARKED ELECTRICS VIN / Serial: 345
234 APPROX 80' 6"X12" BOX CHAIN W/FLITES CLEAN OUT CONVEYOR W/H&T DRUMS, STEEL TROUGH & RETURN (NO SLOPE SHEETING)	

CIPP COLVILLE INDIAN PRECISION PINE - ONLINE ONLY 9/30/2020-10/7/2020

LOT #**243 SKK**

APPROX 25 HP MOTOR TO FALK REDUCER (NO DATA) W/DRIVE CHAIN (DRIVE FOR LOT 201)

244 SKK

GEARHEAD DRIVE MOTOR (NO DATA) W/DRIVE CHAIN (DRIVE FOR LOT 202)

245 SKK

GEARHEAD DRIVE MOTOR (NO DATA) W/DRIVE CHAIN (DRIVE FOR LOT 202)

246 PEERLESS

42-1/2 UNIT HYDRAULIC OPERATED CHIP BIN W/15 HP HYDRAULIC UNIT
VIN / Serial: 699838

247 APPROX 100' H78 W/FLITES BOX CHAIN**248 SKK**

GEARHEAD MOTOR (NO DATA) W/DRIVE CHAIN (DRIVE FOR LOT 247)

249 APPROX 35' 5-STRAND 6"X6" H-CHAIN LOG DECK

W/APPROX 22' 5-ARM LS&L, S-DRIVE, MARKED STEEL PLATES & SUPPORTS TO GROUND (DRIVE MOTOR SOLD AT LOT 267)

250 NICHOLSON A2

44" RH 5-ARM RING DEBARKER W/US 100 HP/1,180 RPM RING DRIVE MOTOR, 50 HP/1,175 RPM MOTOR TO FALK SQUARE BOX REDUCER FEED DRIVE, ALLIGATOR INFEED & OUTFEED CHAINS, HOURGLASS INFEED & OUTFEED ROLLS & HOLD DOWNS, LARGE LOG BYPASS, CAB W/CONTROLS & ELECTRICS, SAS 25 HP HYDRAULIC UNIT (NO SUPPORTS TO GROUND, SPARE PARTS SOLD AT LOTS 925)

LOT #**251 APPROX 40' 8"X15" BOX CHAIN INFEED**

LOG HAUL,
S-DRIVE, STEEL TROUGH & RETURN (NO SUPPORTS TO GROUND, DRIVE MOTOR SOLD AT LOT 268)

252 L&M STYLE

6' BAR SAW W/20 HP MOTOR, CLAMP & CYLINDERS (SPARE SAW BARS SOLD AT LOTS 621 & 622)

253 APPROX 13' 2-STRAND H-CHAIN INFEED LOG

HAUL, H&T
DRUMS, STEEL TROUGH (NO SUPPORTS TO GROUND)

254 APPROX 22' 2-STRAND H-CHAIN OUTFEED

LOG HAUL
W/(5) LOG STOPS & (3) KICKER ARMS, H-SHAFT, STEEL TROUGH (NO SUPPORTS TO GROUND)

255 SKK

10 HP/55 RPM GEARHEAD DRIVE MOTOR W/DRIVE CHAIN (DRIVE FOR LOT 253)

256 SKK

GEARHEAD DRIVE MOTOR (NO DATA) W/DRIVE CHAIN (DRIVE FOR LOT 254)

257 APPROX 23' 4-STRAND 4"X4" H-CHAIN LOG TRANSFER

DECK W/H-SHAFT, DRIVE MOTOR, STEEL PLATE (NO SUPPORTS TO GROUND)

258 APPROX 30' POWERED HOURGLASS ROLLCASE

W/(10) 44"
ROLLS W/5-ARM KICKER (NO SUPPORTS TO GROUND)

259 APPROX 16' 5-STRAND H-CHAIN JACK

LADDER TRANSFER
W/H-SHAFT, STEEL PLATE (NO SUPPORTS TO GROUND)

CIPP COLVILLE INDIAN PRECISION PINE - ONLINE ONLY 9/30/2020-10/7/2020

LOT #	LOT #
260 APPROX 16' 5-STRAND H-CHAIN TRANSFER W/H-SHAFT, STEEL PLATE (NO SUPPORTS TO GROUND)	270 LOT, SKK 7-1/2 HP/45 RPM GEARHEAD MOTOR & GEARHEAD MOTOR (NO DATA) W/DRIVE CHAIN (DRIVE FOR LOT 269)
261 APPROX 10' 5-STRAND H-CHAIN JACK LADDER TRANSFER W/H-SHAFT, STEEL PLATE (NO SUPPORTS TO GROUND)	271 SAS HYDRAULIC UNIT W/(1) 50 HP & (2) 20 HP MOTORS, HEAT EXCHANGER
262 TOSHIBA 10 HP MOTOR TO SKK 84 RPM REDUCER W/DRIVE CHAIN (DRIVE FOR LOT 258)	272 LOT, ASSORTED PARTIAL ELECTRICS IN THIS ROOM (NO WIRE OUTSIDE OF BOX)
263 SKK 15 HP/25 RPM DOUBLE REDUCTION GEARHEAD MOTOR W/DRIVE CHAIN (DRIVE FOR LOT 259)	273 MILLER SRH333 DC WELDER (NO LEADS)
264 TOSHIBA 10 HP MOTOR TO SKK 25 RPM DOUBLE REDUCTION REDUCER W/DRIVE CHAIN (DRIVE FOR LOT 260)	274 APPROX 13' 5-STRAND 6"X6" H-CHAIN JACK LADDER TRANSFER W/H-SHAFT, T-SPROCKETS, STEEL PLATE, SUPPORT TO 1ST HORIZONTAL
265 15 HP MOTOR TO FALK 45 RPM REDUCER	275 APPROX 26' 4-STRAND 4"X4" H-CHAIN LOG TRANSFER W/H-SHAFT, T-SPROCKETS, STEEL PLATE & SIDE PLATE (NO SUPPORTS TO FLOOR)
266 APPROX 20' 5-ARM LOG TIPPLE W/SHAFT & CYLINDER	276 APPROX 52' 4-STRAND 6"X6" H-CHAIN TRANSFER W/4-ARM LS&L, H-SHAFT, T-SPROCKETS, STEEL PLATE & SIDE PLATE
267 SKK 20 HP/25 RPM DOUBLE REDUCTION GEARHEAD MOTOR W/DRIVE CHAIN (DRIVE FOR LOT 249)	277 SKK 15 HP/25 RPM GEARHEAD DRIVE MOTOR W/DRIVE CHAIN (DRIVE FOR LOT 274)
268 SKK 15 HP/45 RPM GEARHEAD DRIVE MOTOR W/DRIVE CHAIN (DRIVE FOR LOT 251)	278 SKK GEARHEAD DRIVE MOTOR (NO DATA) W/DRIVE CHAIN (DRIVE FOR LOT 275)
269 APPROX 80' 8"X15" BOX CHAIN CLEAN OUT CONVEYOR W/H&T DRUMS, STEEL TROUGH & RETURN (NO SLOPE SHEETING)	

CIPP COLVILLE INDIAN PRECISION PINE - ONLINE ONLY 9/30/2020-10/7/2020

LOT #	LOT #
279 SKK	287 APPROX 20' POWERED ROLLCASE W/(8) APPROX
15 HP/20 RPM DOUBLE REDUCTION GEARHEAD DRIVE MOTOR W/DRIVE CHAIN (DRIVE FOR LOT 276)	8-1/2"X28" ROLLS, NO SUPPORTS, GEARHEAD MOTOR (NO DATA)
280 2007 CORLEY SUSL	288 MILLER GOLDSTAR 300SS
LOG CARRIAGE, 48"X16' 3-KNEE TEMPOSONIC POSITIONED, SUPER STRAIGHT LINE KNEES W/CURVED DOGS, (4) TRUCKS, BUMPERS, CARRIAGE TAKE UP, PANTOGRAPH, 120' OF RAIL, SUPPORTS TO FLOOR, LCI READY SCAN CARRIAGE SCANNER W/PHOTO EYES, AIR CURTAIN, LASER LIGHT, CAB & CONTROLS (CARRIAGE DRIVE SOLD AT LOT 580, HYDRAULIC UNIT SOLD AT LOT 573)	DC WELDER W/WELDING PLUG (NO LEADS)
281 LOG BOSS	289 LOT, ASSORTED CARRIAGE, SLABBER & HEADRIG
HYDRAULIC OPERATED LOG TURNER W/CYLINDER	STARTERS IN THESE PANELS (NO WIRE OUTSIDE OF BOX)
282 CM&E 64-8K	290 SQUARE D
RH TEMPOSONIC POSITIONED HEAD RIG SLABBER W/APPROX 150 HP/1,180 RPM MOTOR	LOT, 3-SECTION MCC W/(14) SWITCHES & 2-SECTION MCC W/(12) SWITCHES W/MARKED TRANSFORMER & LIGHTING PANEL (NO WIRE OUTSIDE OF BOX)
283 ALBANY	291 SQUARE D
6' RH SINGLE CUT VERTICAL BAND HEAD RIG, SLAB BED W/HYDRAULIC ROLL, AIR STRAIN, GUIDE HOOD, CAB & CONTROLS (DRIVE MOTOR SOLD AT LOT 576)	LOT, TWIN BANDMILL STARTERS & 4-SECTION MCC W/(18) SWITCHES W/SAFTRONICS EZ6-240 200 HP STARTER & MARKED ELECTRICS (NO WIRE OUTSIDE OF BOX)
284 APPROX 22' POWERED OUTFEED ROLLCASE W/(8) APPROX	292 APPROX 42' 4-STRAND 4"X4" H-CHAIN LOG TRANSFER
10"X60" ROLLS, APPROX 7' 5-STRAND JUMP TRANSFER W/H-SHAFT & T-SPROCKETS, NO SUPPORTS, (2) GEARHEAD DRIVE MOTORS (NO DATA)	W/H-SHAFT, T-SPROCKETS, STEEL PLATE & SIDE PLATE (NO SUPPORTS)
285 APPROX 19' 5-STRAND H78 CHAIN	293 SKK
TRANSFER W/H-SHAFT, T-SPROCKETS, STEEL PLATE, NO SUPPORTS, DRIVE MOTOR (NO DATA)	DOUBLE REDUCTION GEARHEAD DRIVE MOTOR (NO DATA) W/DRIVE CHAIN (DRIVE FOR LOT 292)
286 APPROX 28"X34' TRANSFER BELT W/H&T DRUMS, NO	294 APPROX 12' 4-ARM LS&L W/CYLINDER & BEARINGS
SUPPORTS, SKK GEARHEAD MOTOR (NO DATA)	295 ALBANY 46701
	6' LH TWIN BAND TEMPOSONIC POSITIONED VERTICAL BAND RESAW W/(2) TOSHIBA 150 HP/1,160 RPM MOTORS, AIR STRAIN, MCDONOUGH

CIPP COLVILLE INDIAN PRECISION PINE - ONLINE ONLY 9/30/2020-10/7/2020

LOT

EDLH CARRIAGE W/30 HP HYDRAULIC DRIVE, 24'
CENTERING ROLLS, 30' OUTFEED SLAB ROLLS
W/HYDRAULIC DRIVEN ROLLS, LASER LIGHTS
W/RACK, MARKED CONTROLS IN ROOM, NO
SUPPORTS TO GROUND
VIN / Serial: 124058

296 APPROX 26"X60' RE-ENTRY BELT TRANSFER,
H&T ROLLS,
STEEL TROUGH & SUPPORTS TO FLOOR &
DIVERTER GATE W/GEARHEAD MOTOR (NO DATA)

297 APPROX 16' 10-STRAND H78 FLOOR
TRANSFER

W/H-SHAFT, T-SPROCKETS, NO SUPPORTS,
GEARHEAD MOTOR (NO DATA)

298 APPROX 6' 5-STRAND H138 LUMBER
LANDING TABLE
W/H-SHAFT, STEEL PLATE & SUPPORTS

299 SKK

3 HP/56 RPM GEARHEAD DRIVE MOTOR W/DRIVE
CHAIN (DRIVE FOR LOT 295)

300 1988 MCDONOUGH SD6A

6' RH BOTTOM CUTTING HORIZONTAL BAND
RESAW W/APPROX 200 HP MOTOR, POWERED
KNURLED FEED THRU ROLLS & HOLD DOWNS, 30'
HYDRAULIC DRIVEN INFEED ROLL CASE, (3)
HYDRAULIC DRIVEN OUTFEED ROLLS, MARKED
ELECTRICS (HYDRAULIC UNIT SOLD AT LOT 567)
VIN / Serial: H72-321BC

301 APPROX 24' 5-STRAND H78 INFEED TRANSFER

W/H-SHAFT, LATTICE FRAME RETURNS, STEEL
PLATE & SIDE PLATE W/SUPPORTS TO FLOOR

302 SKK

5 HP/20 RPM DOUBLE REDUCTION GEARHEAD
DRIVE MOTOR W/DRIVE CHAIN (DRIVE FOR LOT
301)

LOT

303 APPROX 30"X24" OUTFEED BELT TRANSFER
W/H&T DRUMS,
STEEL TROUGH, SUPPORTS TO FLOOR & BRIDGE

304 APPROX 8' 13-STRAND H78 LUMBER
LANDING TABLE
W/H-SHAFT, STEEL PLATE & SUPPORTS TO FLOOR

305 APPROX 12' 13-STRAND SHARP CHAIN
INCLINE TRANSFER
W/H-SHAFT, T-SPROCKETS, STEEL PLATE &
SUPPORTS TO FLOOR

306 APPROX 8' 13-STRAND 81X CHAIN
TRANSFER W/H-SHAFT,
T-SPROCKETS, STEEL PLATE & SUPPORTS TO
FLOOR

307 SM CYCLO

5 HP/29.7 RPM GEARHEAD DRIVE MOTOR W/DRIVE
CHAIN (DRIVE FOR LOT 304)

308 SM CYCLO

5 HP/29.7 RPM GEARHEAD DRIVE MOTOR W/DRIVE
CHAIN (DRIVE FOR LOT 305)

309 SM CYCLO

5 HP/29.7 RPM GEARHEAD DRIVE MOTOR W/DRIVE
CHAIN (DRIVE FOR LOT 306)

310 APPROX 24"X50' CANTED TRANSFER BELT
W/H&T DRUMS,
SUPPORTS TO FLOOR

311 APPROX 12' 5-STRAND 81X TRANSFER
W/H-SHAFT, STEEL
PLATE, NO SUPPORTS

312 SKK

5 HP/56 RPM GEARHEAD MOTOR W/DRIVE CHAIN
(DRIVE FOR LOT 310)

CIPP COLVILLE INDIAN PRECISION PINE - ONLINE ONLY 9/30/2020-10/7/2020

LOT #**313 SM CYCLO**

5 HP/29.7 RPM GEARHEAD DRIVE MOTOR W/DRIVE
CHAIN (DRIVE FOR LOT 311)

**314 LOT, (5) ASSORTED FANS AT LOTS 306, 310
& 315
AREAS**

315 1988 UKIAH

8"X60" STA COMBO EDGER W/(2) RELIANCE 350
HP/1,765 RPM ARBOR MOTORS, MOTOR TO SKK
FEED DRIVE, #3 STANDARD SPLINE ARBOR,
KNURLED FEED ROLLS, PRESS ROLLS, CLAMSHELL
OPENING, LASER LIGHTS, MACHINE GUARDING
(HYDRAULIC UNIT SOLD AT LOT 554, SAW GLIDE
SYSTEM SOLD AT LOT 555)

316 RELIANCE

350 HP/1,765 RPM/460V, 449T FRAME MOTOR (NO
WIRE OUTSIDE OF BOX)

317 RELIANCE

350 HP/1,765 RPM/460V, 449T FRAME MOTOR (NO
WIRE OUTSIDE OF BOX)

**318 LOT, APPROX 60"X12' POWERED INFEED
ROLLCASE W/(6)
APPROX 8"X60" ROLLS W/APPROX 9' 3-STRAND
JUMP TRANSFER W/APPROX 7' 4-STRAND SHARP
CHAIN INFEED TRANSFER W/GEARHEAD DRIVE
MOTOR & APPROX 16' POWERED INFEED ROLLCASE
(FROM TWIN) W/(2) MOTOR TO REDUC**

319 SKK

10 HP/45 RPM GEARHEAD DRIVE MOTOR W/DRIVE
CHAIN (DRIVE FOR LOT 318)

320 SKK

10 HP/45 RPM GEARHEAD DRIVE MOTOR W/DRIVE
CHAIN (DRIVE FOR LOT 318)

LOT #

**321 APPROX 60"X26' OUTFEED BELT TRANSFER
W/H&T DRUMS,
SUPPORTS TO FLOOR, SM CYCLO GEARHEAD DRIVE
MOTOR (NO DATA)**

**322 APPROX 28' POWERED OUTFEED ROLLCASE
W/(9) APPROX
8"X66" ROLLS, APPROX 7' 5-STRAND H78B JUMP
TRANSFER, SUPPORTS TO FLOOR, (2) SM CYCLO
GEARHEAD DRIVE MOTORS (NO DATA)**

**323 LOT, MARKED ELECTRICS, CONTROLS &
HEATER
(NO WIRE
OUTSIDE OF BOX)**

**324 LOT, (3) ASSORTED FALL ARRESTERS
ABOVE QUAD
W/TROLLEYS**

325 ALBANY

5' QUAD BAND TEMPOSONIC POSITIONED
VERTICAL BAND RESAW W/(4) TOSHIBA 125
HP/1,765 RPM MOTORS, MECHANICAL STRAIN, 6'
LINE BAR W/POWERED FEED ROLLS, APPROX 20'
POWERED INFEED ROLLCASE, MERRY-GO-ROUND
TRANSFERS W/ALL DRIVES, MARKED CONTROLS &
ELECTRICS IN CONTROL ROOM (HYDRAULIC UNIT
SOLD AT LOT 492)

**326 APPROX 35' POWERED INFEED ROLLCASE
W/(11) 10"X60"
ROLLS, APPROX 7' 5-STRAND H78 JUMP TRANSFER
W/(2) LUMBER GATES & (2) DRIVE MOTORS (NO
DATA)**

**327 APPROX 16' POWERED OUTFEED ROLLCASE
W/(6) 8"X60"
ROLLS, TRAVELING EDGE PICKER, SUPPORTS TO
FLOOR, SKK GEARHEAD MOTOR (NO DATA)**

**328 LOT, APPROX 9' 5-STRAND H78 INCLINE
TRANSFER TO
APPROX 20"X26' MERRY-GO-ROUND BELT
TRANSFER W/DRIVE MOTORS (NO DATA)**

CIPP COLVILLE INDIAN PRECISION PINE - ONLINE ONLY 9/30/2020-10/7/2020

LOT

**329 APPROX 14' 6-STRAND H78B BOARD
TRANSFER**W/H-SHAFT, T-SPROCKETS, STEEL PLATE,
SUPPORTS TO FLOOR, DRIVE MOTOR (NO DATA)**330 APPROX 36"X35' BELT TRANSFER, H&T
DRUMS, STEEL
TROUGH, DRIVE MOTOR (NO DATA)****331 ARMSTRONG**BANDSAW LEVELER
VIN / Serial: HDBSL**332 ARMSTRONG**BANDSAW LEVELER
VIN / Serial: BSL32**333 ARMSTRONG**AUTO SWAGE & SHAPER
VIN / Serial: ASL109**334 ARMSTRONG**LH VARISHARP CNC BANDSAW SHARPENER
VIN / Serial: VARISHARP-41**335 ARMSTRONG**RH VARISHARP CNC BANDSAW SHARPENER
VIN / Serial: VARISHARP-40**336 ARMSTRONG #4**LH BANDSAW SHARPENER W/CLAMP & STANDS
VIN / Serial: 14897**337 ARMSTRONG #4**RH BANDSAW SHARPENER W/CLAMP & STANDS
VIN / Serial: 91714

LOT

338 ARMSTRONG #4LH BANDSAW SHARPENER W/CLAMP & STANDS
VIN / Serial: N/A**339 ARMSTRONG #4SD**STRETCHER ROLL W/WELDING CLAMP, ANVILS &
STAND
VIN / Serial: 456SDR**340 ARMSTRONG #4SD**STRETCHER ROLL W/WELDING CLAMP, ANVILS &
STAND
VIN / Serial: 4569SR**341 ARMSTRONG #4**STRETCHER ROLL W/WELDING CLAMP, ANVILS &
STAND
VIN / Serial: RBSR4-1**342 ARMSTRONG 3-10C**CIRCLE SAW STRETCHER ROLL
VIN / Serial: 15817**343 ARMSTRONG**CIRCLE SAW LEVELER
VIN / Serial: 20536**345 NIELSEN K200**CHAIN SHARPENER
VIN / Serial: N/A**346 WRIGHT W-150HD**SIDE GRINDER
VIN / Serial: 551**347 WRIGHT W-150HDB**FACER/TOPPER
VIN / Serial: N/A

CIPP COLVILLE INDIAN PRECISION PINE - ONLINE ONLY 9/30/2020-10/7/2020

LOT

348 WRIGHT W-350 SUPER HD

SIDE GRINDER
VIN / Serial: G0306

349 WRIGHT W-350 AUTO DUAL

SIDE GRINDER
VIN / Serial: N/A

350 SCHURMAN 90

DUAL HEAD SAW GUIDE RESURFACER

351 GUIDE PRESS

352 LOT, BABBIT POT W/HOOD & MARKED
TABLE

353 LOT, CARBIDE SAW TIPS

354 LOT, (2) CIRCLE SAW SET UP STANDS

355 LOT, EDGER GUIDES IN THIS AREA

356 LOT, EDGER GUIDES IN THIS AREA

357 LOT, EDGER GUIDES IN THIS AREA

358 ACME

CIRCLE SAW SHARPENER

359 ARMSTRONG

TENSION GAUGE W/ANVIL & CHAIN STATION

360 BABBIT POT W/BENCH

361 GUIDE MILLING MACHINE

362 LOT, CHAIN SAW/CUT OFF SAW CHAIN

LOT

363 HANCHETT

BANDSAW SHEAR

364 LOT, BANDSAWS IN THIS AREA

365 LOT, BANDSAWS ON THIS LANDING

366 LOT, BANDSAWS ON THIS LANDING

367 LOT, BANDSAWS IN THIS AREA

368 SWA MK-32

SHOP DOLLY W/FORK POCKETS

369 LOT, ASSORTED GRINDING WHEELS IN THIS
AREA

370 MCDONOUGH

GUIDE MILLING MACHINE

371 CUSTOM BUILT

GUIDE MILLING MACHINE

372 CUSTOM BUILT

GUIDE MILLING MACHINE

373 LOT, PRECISION INSTRUMENTS

374 LOT, ASSORTED BANDSAW GUIDES

375 LOT, GUIDE MATERIAL & ASSORTED ITEMS
W/THIS

CABINET

376 LOT, ASSORTED SWAGES & SHAPERS

377 LOT, APPROX 24" DIA SAWS W/1" ARBOR

CIPP COLVILLE INDIAN PRECISION PINE - ONLINE ONLY 9/30/2020-10/7/2020

LOT #	LOT #
378 LOT, APPROX 20" DIA SPLINED ARBOR SAWS	392 JET
379 LOT, APPROX 24" DIA SAWS W/1" ARBOR	1/2-TON ELECTRIC CHAIN HOIST W/TROLLEY & PENDANT CONTROL (ON LANDING)
380 LOT, APPROX 24" DIA SAWS W/1" ARBOR	393 COFFING
381 LOT, APPROX 25" DIA SPLINED ARBOR SAWS	1/2-TON ELECTRIC CHAIN HOIST W/TROLLEY, PENDANT CONTROL & SAW CARRIER (ON LANDING)
382 LOT, APPROX 25" DIA SPLINED ARBOR SAWS	394 COFFING
383 APPROX 1-1/4"X26" ROUND SAW ANVIL	1/4-TON ELECTRIC CHAIN HOIST W/TROLLEY, PENDANT CONTROL & SAW CARRIER (ON LANDING)
384 APPROX 4"X23" ROUND SAW ANVIL	395A LOT, LOOSE CONTENTS OF THESE ROOMS
385 APPROX 3-3/4"X18" ROUND SAW ANVIL	395B SIMONDS
386 APPROX 4"X23" ROUND SAW ANVIL (ON FLOOR BY LOT 387)	9"X40"X.072 GAUGE RH BANDSAW BLADE IN CRATE
387 LOT, STEEL TOP TABLE W/DE GRINDER, ATHOL 4" VISE & PARTS BIN	396 BARNHARDT NO. 54
388 LOT, (3) SAW BOXES	BANDMILL WHEEL GRINDER W/55"X30" BARRELS, (2) POWERED HEADS, (2) NON-POWERED HEADS, FLEX CABLE & SPARE PARTS IN CABINET
389 COFFING	397 CUSTOM BUILT
1-TON ELECTRIC CHAIN HOIST W/TROLLEY, PENDANT CONTROL & SAW CARRIER	GUIDE MILLING MACHINE
390 COFFING	398 APPROX 3"X10"X60" PINK GRANITE BLOCK
1/4-TON ELECTRIC CHAIN HOIST W/TROLLEY, PENDANT CONTROL & SAW CARRIER	399 LOT, APPROX 24" DIA SAWS W/1" ARBOR
391 COFFING	400 LOT, ASSORTED PARTS W/WOOD CABINETS & PARTS BIN (NO BARNHARDT PARTS)
2-TON ELECTRIC CHAIN HOIST W/TROLLEY & PENDANT CONTROL	401 LOT, ASSORTED PARTS W/WOOD CABINETS

CIPP COLVILLE INDIAN PRECISION PINE - ONLINE ONLY 9/30/2020-10/7/2020

LOT #	LOT #
402 STEEL BOTTLE CART	413 SKK
403 LOT, ARMSTRONG AIR CLAMP & MANUAL CLAMPS	7-1/2 HP/100 RPM GEARHEAD DRIVE MOTOR W/DRIVE CHAIN (DRIVE FOR LOT 412)
404 LOT, MANUAL CLAMPS	414 SKK
405 LOT, (3) LUBE DISPENSING STATIONS ALONG WALLS	5 HP/100 RPM GEARHEAD DRIVE MOTOR W/DRIVE CHAIN (DRIVE FOR LOT 412)
406 LOT, ALL MARKED WOOD CABINETS W/CONTENTS	415 APPROX 24' 5-STRAND H78 & H78B TRANSFER
407 AEROVENT	W/H-SHAFT, T-SPROCKETS, STEEL PLATE (NO SUPPORTS) W/DRIVE MOTOR (NO DATA)
APPROX 24" BLOWER W/ALL BLOWPIPE	416 APPROX 24' 5-STRAND H78 & H78B TRANSFER
408 LOT, ALL MARKED ELECTRICS TO INCLUDE HEATERS & LIGHTS (NO WIRE OUTSIDE OF BOX)	W/H-SHAFT, T-SPROCKETS, STEEL PLATE (NO SUPPORTS) W/DRIVE MOTOR (NO DATA)
409 APPROX 38'-45'H X 110'W X 140'L ALL STEEL SAWMILL BUILDING TO INCLUDE ALL INTERIOR BUILDINGS, LIGHTING & FANS, SPRINKLERS & ASSOCIATED VALVE HOUSES (NO CONDUIT OR WIRE, MACHINERY HAS PRIORITY OVER MACHINERY. PLEASE CONSULT AUCTION SITE REP PRIOR TO BIDDING.)	417 APPROX 44' 5-STRAND 81X TRANSFER W/H-SHAFT,
410 LOT, ALL MARKED CATWALKS & STAIRS IN THIS	T-SPROCKETS, STEEL PLATE, SUPPORTS TO FLOOR, MARKED CATWALK & STAIRS
BUILDING (PLEASE CONSULT AUCTION SITE REP PRIOR TO BIDDING)	418 SKK
411 LOT, ALL SUBSTRUCTURE IN THIS BUILDING TO INCLUDE 2ND & 3RD STORY FLOORS & SUPPORTS, AIR & HYDRAULIC LINES (NO CONDUIT OR WIRE, PLEASE CONSULT AUCTION SITE REP PRIOR TO BIDDING)	419 APPROX 48"X96' BELT TRANSFER TO REMAN EDGER
412 APPROX 42' POWERED OUTFEED ROLLCASE W/(21)	INFEED, H&T DRUMS, STEEL TROUGH & RETURN, SUPPORTS TO 1ST HORIZONTAL SURFACE
8-1/2"X54' ROLLS & 6' 5-STRAND 81X OUTFEED TRANSFER, SUPPORTS TO FLOOR (NO STEEL PLATE)	420 SKK
	15 HP/230 RPM GEARHEAD DRIVE MOTOR W/DRIVE CHAIN (DRIVE FOR LOT 419)
	421 APPROX 8' 6-STRAND H78 RE-ENTRY TRANSFER
	W/H-SHAFT, T-SPROCKETS, STEEL SUPPORTS TO GROUND W/GEARHEAD DRIVE MOTOR (NO DATA)

CIPP COLVILLE INDIAN PRECISION PINE - ONLINE ONLY 9/30/2020-10/7/2020

LOT #

422 APPROX 9' 6-STRAND H78B LUMBER
LANDING TABLE
W/H-SHAFT, T-SPROCKETS, STEEL PLATE &
SUPPORTS TO FLOOR W/GEARHEAD DRIVE MOTOR
(NO DATA)

423 APPROX 36' 6-STRAND 81X TRANSFER,
H-SHAFT,

T-SPROCKETS, STEEL PLATE & SUPPORTS TO
FLOOR

424 APPROX 18' 6-STRAND 81X TRANSFER,
H-SHAFT,

T-SPROCKETS, STEEL PLATE & SUPPORTS TO
FLOOR

425 SM CYCLO

10 HP GEARHEAD DRIVE MOTOR (NO FINAL RPM)
W/DRIVE CHAIN (DRIVE FOR LOT 423)

426 SM CYCLO

3 HP/34.3 RPM GEARHEAD DRIVE MOTOR W/DRIVE
CHAIN (DRIVE FOR LOT 424)

427 USNR TA36

TOP HEAD 6"X36" REMAN EDGER W/300 HP TOP
ARBOR DRIVE, APPROX 200 HP MOTOR ON TOP
REMAN HEAD, MOTOR TO SKK FEED DRIVE MOTOR,
(3) SHIFTING SAWS, KNURLED FEED ROLLS, PRESS
ROLLS, MARKED CONTROLS & ELECTRICS
(HYDRAULIC UNIT SOLD AT LOT 534)
VIN / Serial: 3245

428 USNR

16' TEMPOSONIC INFEEED FEED TABLE W/(4)
HYDRAULIC DRIVEN FEED ROLLS, (4) TEMPOSONIC
BOARD POSITIONERS, INFEEED SHARP CHAIN

429 APPROX 44"X16' OUTFEED BELT TRANSFER
W/PNEUMATIC

EDGE PICKER, H&T DRUMS, STEEL TROUGH,
SUPPORTS TO FLOOR

LOT #

430 APPROX 44"X18' OUTFEED BELT TRANSFER
W/H&T DRUMS,
STEEL TROUGH, SUPPORTS TO FLOOR

431 APPROX 7' 6-STRAND H78 LUMBER LANDING
TABLE

W/H-SHAFT, STEEL PLATE & LUMBER SLIDES

432 TECO

10 HP MOTOR TO SKK 520 RPM REDUCER W/DRIVE
CHAIN (DRIVE FOR LOT 430)

433 SKK

5 HP/155 RPM GEARHEAD DRIVE MOTOR W/DRIVE
CHAIN (DRIVE FOR LOT 431)

434 SEW

GEARHEAD DRIVE MOTOR (NO DATA) W/DRIVE
CHAIN (DRIVE FOR LOT 432)

435 1999 USNR

20' EDGER MAXIMIZER W/(5) USNR G26L7DGRO
SCANNING HEADS, PASS 26' W/SCANNER BLOWER,
MARKED ELECTRICS & CONTROLS NEAR SCANNER
& SERVER CONTROL ROOM W/CONTENTS

436 LOT, SCHURMAN 16' 9-STRAND 81X LUGGED
PASS THRU
TRANSFER W/EVEN END ROLLS, 6' 5 & 7-STRAND
SHARP CHAIN LOADING TABLE W/ALL DRIVE
SHAFTS, T-SPROCKET, SUPPORTS TO FLOOR

437 APPROX 10' 10-STRAND UNSCRAMBLER
W/HYDRAULIC

DRIVE MOTOR, SUPPORTS TO FLOOR

438 ALLEN BRADLEY BULLETIN 2100

6-SECTION MCC W/(21) SWITCHES & ALLEN
BRADLEY SMC PLUS 200 HP SMC (NO WIRE
OUTSIDE OF BOX)

CIPP COLVILLE INDIAN PRECISION PINE - ONLINE ONLY 9/30/2020-10/7/2020

LOT #**439 ALLEN BRADLEY BULLETIN 2100**

4-SECTION MCC W/(15) SWITCHES & ALLEN
BRADLEY SMC PLUS 300 HP SMC (NO WIRE
OUTSIDE OF BOX)

**440 LOT, (3) TOSHIBA G3 TOSVERT-130
TRANSISTOR**

INVERTERS (NO WIRE OUTSIDE OF BOX)

**441 LOT, MARKED HOSE REEL, HEATER &
MIRROR
IN THIS
AREA****442 LOT, MARKED OFFICE CONTENTS IN UPPER
OFFICE (NO
LOT 435 ELECTRICS)****443 LOT, MARKED OFFICE CONTENTS IN LOWER
OFFICE****444 APPROX 28'-35'H X 100'W X 140'L ALL
STEEL BOLT
TOGETHER REMAN EDGER BUILDING W/LIGHTS,
SPRINKLER SYSTEM W/ASSOCIATED VALVE
HOUSES (NO WIRE OR CONDUIT), WOOD 2-STORY
OFFICE BUILDING, CONCRETE FLOOR
W/SUBSTRUCTURE (NO CONDUIT OR WIRE,
MACHINERY HAS PRIORITY OVER BUILDING.
PLEASE CONSULT AUCTION SITE REP PRIOR TO
BIDDING.)****445 LOT, ALL MARKED CATWALKS & STAIRS
(PLEASE CONSULT
AUCTION SITE REP PRIOR TO BIDDING)****446 LOT, (2) APPROX 24' 6-STRAND 81X
TRANSFERS TO
TRIMMER W/H-SHAFTS, T-SPROCKETS, STEEL
PLATES & SUPPORTS TO FLOOR W/DRIVE MOTORS
(NO DATA)****LOT #****447 APPROX 70' 6-STRAND 81X TRANSFER TO
TRIMMER**

W/H-SHAFT, T-SPROCKETS, STEEL PLATE &
SUPPORTS TO FLOOR

**448 15 HP/1,750 RPM MOTOR TO SM CYCLO
29:1 RATIO
REDUCER W/DRIVE CHAIN (DRIVE FOR LOT 447)****449 1997 USNR/HEMCO 3320**

LH SAWMILL TRIMMER W/(11) INDIVIDUALLY
MOTORIZED AIR LIFT SAWS, 20' CUT, APPROX 26'
PASS, APPROX 10' 9-STRAND 81X FEED THRU
TRANSFER, 10' 7-STRAND 81X LUGGED INFEED
TRANSFER W/EVEN END ROLLCASE, HEMCO 1180
APPROX 6' 9-STRAND OUTFEED TRANSFER
W/BOARD SKIDS

450 HEMCO 3383

3-STAGE PNEUMATIC POSITIONED FENCE W/STEEL
FRAME & SUPPORTS TO GROUND

451 1998 USNR

20' TRIMMER OPTIMIZER W/(5) USNR G26L7DGRO
SCANNING HEADS, PASS 26' W/MARKED CONTROLS,
ELECTRICS & SCANNER BLOWER, MARKED PLC &
COMPUTERS W/CONTENTS OF OFFICE

452 SCHURMAN

16' 9-STRAND 81X LUGGED PASS THRU SCANNER
TRANSFER W/H-SHAFT (NO TAIL SHAFT), STEEL
RACES & SUPPORTS TO FLOOR

453 HEMCO

7-1/2' 7-STRAND LUG LOADER W/6-1/2' 6-STRAND 81X
LOADING TRANSFER, (2) H-SHAFTS, SUPPORTS TO
FLOOR

**454 APPROX 16' 6-STRAND 81X INFEED
TRANSFER, S-DRIVE,
STEEL RACES & SUPPORTS TO FLOOR W/DRIVE
MOTOR (NO DATA)**

CIPP COLVILLE INDIAN PRECISION PINE - ONLINE ONLY 9/30/2020-10/7/2020

LOT

**455 APPROX 16' 10-STRAND UNSCRAMBLER
W/HYDRAULIC**

DRIVE MOTOR, SUPPORTS TO FLOOR

456 1998 HEMCO6'-20' 48-BIN J-BAR SORTER W/75 HP MOTOR TO SKK
DRIVE, APPROX 200' 7-STRAND 81X FEED THRU
TRANSFER, 42" BINS W/APPROX 377 - 2"X4"
CAPACITY, 23,500 LB CAPACITY, (8) REMOTE
STATIONS, CATWALK & STAIRS**457 APPROX 50' 5-STRAND 81X HAUL-AWAY
TRANSFER**

W/S-DRIVE, STEEL RACES & SUPPORTS TO GROUND

**458 APPROX 50' 5-STRAND 81X HAUL-AWAY
TRANSFER**

W/S-DRIVE, STEEL RACES & SUPPORTS TO GROUND

**459 APPROX 50' 5-STRAND 81X HAUL-AWAY
TRANSFER**

W/S-DRIVE, STEEL RACES & SUPPORTS TO GROUND

**460 APPROX 50' 5-STRAND 81X HAUL-AWAY
TRANSFER**

W/S-DRIVE, STEEL RACES & SUPPORTS TO GROUND

461 SIEMENS15 HP/1,750 RPM MOTOR TO SM CYCLO 29:1 RATIO
REDUCER W/DRIVE CHAIN (DRIVE FOR LOT 457)**462 SIEMENS**15 HP/1,750 RPM MOTOR TO SM CYCLO 29:1 RATIO
REDUCER W/DRIVE CHAIN (DRIVE FOR LOTS
458-460)**463 SIEMENS**15 HP/1,750 RPM MOTOR TO SM CYCLO 29:1 RATIO
REDUCER W/DRIVE CHAIN (DRIVE FOR LOTS

LOT

458-460)

464 SIEMENS15 HP/1,750 RPM MOTOR TO SM CYCLO 29:1 RATIO
REDUCER W/DRIVE CHAIN (DRIVE FOR LOTS
458-460)**465 HEMCO**HYDRAULIC UNIT W/(2) 50 HP & (1) 15 HP MOTORS,
THERMAL TRANSFER HEAT EXCHANGER, IN LINE
FILTERS, TANK HEATER, SELF-CONTAINED**466 APPROX 100' 5-STRAND 81X INFEEED
TRANSFER W/LASER**THICKNESS, WEIGHT SCALES & MOISTURE
DETECTING STATIONS W/H-SHAFT, STEEL RACES &
SUPPORTS TO FLOOR**467 APPROX 20' 8-STRAND 81X LUGGED
TRANSFER W/(8)**APPROX 15' HYDRAULIC DRIVEN END ROLLS,
APPROX 3' 8-ARM TIPPLE, STEEL RACES &
SUPPORTS TO GROUND**468 APPROX 24"X26' DROP OUT BELT CONVEYOR
W/H&T**DRUMS, STEEL TROUGH & DRIVE MOTOR (NO
DATA)**469 ALLEN BRADLEY BULLETIN 2100**9-SECTION MCC W/(38) SWITCHES W/ALLEN
BRADLEY 75 HP & (2) 10 HP VS DRIVES & MILLER
SRH 444 WELDER (NO WIRE OUTSIDE OF BOX OR
WELDING LEADS)**470 APPROX 44'-48'H X 40'W X 400'L ALL
STEEL BOLT**TOGETHER SORTER BUILDING W/LIGHTS &
SPRINKLER SYSTEM W/ASSOCIATED VALVE
HOUSES (NO WIRE OR CONDUIT), CONCRETE FLOOR
W/SUPPORTS (MACHINERY HAS PRIORITY OVER
MACHINERY. PLEASE CONSULT AUCTION SITE REP
PRIOR TO BIDDING)

CIPP COLVILLE INDIAN PRECISION PINE - ONLINE ONLY 9/30/2020-10/7/2020

LOT #**471 LUNDEN**

20' HYDRAULIC OPERATED OVER END STACKER
W/AUTO STICK PLACER, SECONDARY STACKING
FORKS, 5-ARM X 62" LUMBER LOWERING HOIST, (9)
STICK PLACER ARMS, 24' 2-SECTION 6-STRAND 81X
INFEED W/EVEN END CHAINS, ELEVATED
ROLLCASE, MARKED ELECTRICS & CONTROLS,
SUPPORT STRUCTURE, CATWALK & STAIRS
VIN / Serial: 80300

**472 APPROX 17' 5-STRAND 81X OUTFEED
TRANSFER**

W/S-DRIVE, STEEL RACES & SUPPORTS

473 SKK

GEARHEAD DRIVE MOTOR (NO DATA) W/DRIVE
CHAIN (DRIVE FOR LOT 473)

**474 APPROX 16' 8-STRAND 81X UNSCRAMBLER
W/WEG
15 HP
MOTOR TO CONE 30:1 REDUCER W/SUPPORT TO
GROUND****475 APPROX 14' 6-STRAND 81X INCLINE
TRANSFER**

W/H-SHAFT, T-SPROCKETS, SUPPORTS TO GROUND

476 SKK

7-1/2 HP/45 RPM GEARHEAD MOTOR W/DRIVE
CHAIN (DRIVE FOR LOT 475)

**477 APPROX 25' POWERED OUTFEED ROLLCASE
W/(12) 9"X60"
ROLLS, STEEL FRAME TO GROUND****478 APPROX 25' POWERED OUTFEED ROLLCASE
W/(12) 9"X60"
ROLLS, STEEL FRAME TO GROUND****LOT #****479 APPROX 25' POWERED OUTFEED ROLLCASE
W/(12) 9"X60"
ROLLS, STEEL FRAME TO GROUND****480 APPROX 15' POWERED OUTFEED ROLLCASE
W/(7) 9"X60"
ROLLS, STEEL FRAME TO GROUND****481 SKK**

5 HP/20 RPM DOUBLE REDUCTION GEARHEAD
DRIVE MOTOR W/DRIVE CHAIN (DRIVE FOR LOTS
477-480)

482 SKK

5 HP/20 RPM DOUBLE REDUCTION GEARHEAD
DRIVE MOTOR W/DRIVE CHAIN (DRIVE FOR LOTS
477-480)

483 SKK

5 HP/20 RPM DOUBLE REDUCTION GEARHEAD
DRIVE MOTOR W/DRIVE CHAIN (DRIVE FOR LOTS
477-480)

484 SKK

5 HP/20 RPM DOUBLE REDUCTION GEARHEAD
DRIVE MOTOR W/DRIVE CHAIN (DRIVE FOR LOTS
477-480)

**485 APPROX 18"X36' BELT CONVEYOR UNDER
LOT**

494, H&T
DRUMS, STEEL TROUGH & SUPPORTS TO FLOOR

486 SKK

GEARHEAD DRIVE MOTOR (NO DATA) W/DRIVE
CHAIN (DRIVE FOR LOT 489)

**487 LOT, APPROX 36' 90-DEGREE TURN
TRANSFER**

W/5-STRAND 81X CHAIN, H-SHAFT, T-SPROCKETS &
APPROX 20' 5-STRAND H78 TRANSFER W/H-SHAFT,
T-SPROCKETS & STEEL SUPPORTS TO GROUND (NO

CIPP COLVILLE INDIAN PRECISION PINE - ONLINE ONLY 9/30/2020-10/7/2020

LOT #

DRIVE MOTOR FOR 20' TRANSFER)

488 SKKGEARHEAD DRIVE MOTOR (NO DATA) W/DRIVE
CHAIN (DRIVE FOR LOT 485)**489 ALLEN BRADLEY BULLETIN 2100**

MCC W/(18) SWITCHES (NO WIRE OUTSIDE OF BOX)

**490 LOT, ASSORTED HYDRAULIC HOSE FITTINGS
IN**WEATHERHEAD BINS IN THIS WOOD BUILDING
W/ASSORTED HYDRAULIC HOSE**491 LOT, CONTENTS OF LUNCHROOM****492 SAS**HYDRAULIC UNIT FOR LOT 325 QUAD BAND W/(2) 50
HP MOTORS, HEAT EXCHANGER, IN LINE FILTERS,
TANK HEATER, SELF-CONTAINED**493 APPROX 8' 5-STRAND H78B RE-ENTRY
LUMBER LANDING
TABLE W/H-SHAFT, STEEL PLATE & MARKED
SUPPORTS TO GROUND****494 APPROX 60' 5-STRAND H78 TRANSFER
W/H-SHAFT,**T-SPROCKETS, STEEL PLATE & MARKED SUPPORTS
TO GROUND**495 SULLAIR TS20-200HAC**ROTARY SCREW COMPRESSOR W/200 HP MOTOR,
ATTACHED ELECTRICS
VIN / Serial: 003/0068690**496 GREAT LAKES AIR G1H-1000-436**INTERNAL HEAT REGENERATIVE AIR DRYER, 1,000
SCFM AT 100 PSIG
VIN / Serial: 23274**LOT #****497 METALLIC BRAND**APPROX 24'-28'H X 85'W X 155'L ALL STEEL BOLT
TOGETHER BUILDING W/COMPRESSOR BUILDING
EXTENSION, LIGHTING & SPRINKLERS W/VALVE
HOUSE (OVER LOTS 901-974), MILL SPARES (NO
CONDUIT OR WIRE, MACHINERY HAS PRIORITY
OVER BUILDING. PLEASE CONSULT AUCTION SITE
REP PRIOR TO BIDDING.)**498 APPROX 26'-28'H X 55'W X 60'L ALL
STEEL BOLT
TOGETHER BUILDING W/LIGHTING & SPRINKLERS
(NO CONDUIT OR WIRE, MACHINERY HAS PRIORITY
OVER BUILDING. PLEASE CONSULT AUCTION SITE
REP PRIOR TO BIDDING.)****499 APPROX 24'-26'H X 40'W X 50'L ALL
STEEL BOLT
TOGETHER BUILDING OVER STACKER OUTFEED
ROLLCASES LOTS 478 & 479 (NO CONDUIT OR WIRE,
MACHINERY HAS PRIORITY OVER BUILDING.
PLEASE CONSULT AUCTION SITE REP PRIOR TO
BIDDING.)****500 CM&E 64**12-KNIFE SLABBER W/TOSHIBA 200 HP/1,180 RPM
MOTOR**501 APPROX 32' 6"X11" BOX CHAIN CONVEYOR
UNDER**TRIMMER W/H-SHAFT, STEEL TROUGH & RETURN,
SLOPING & SUPPORTS TO GROUND (DRIVE MOTOR
LOT 505)**502 APPROX 75' 6"X11" BOX CHAIN W/FLITES
CONVEYOR TO
CONVEYOR LOT 503 W/H&T SPROCKETS, STEEL
TROUGH & RETURNS, SUPPORTS TO GROUND
(DRIVE MOTOR LOT 506)****503 APPROX 28' 6"X11" BOX CHAIN W/FLITES
CONVEYOR**FROM LOTS 502 & 504 W/H&T SPROCKETS, STEEL
TROUGH, RETURN & SLOPING (DRIVE MOTOR LOT
507)

CIPP COLVILLE INDIAN PRECISION PINE - ONLINE ONLY 9/30/2020-10/7/2020

LOT #

504 APPROX 23' 6"X11" BOX CHAIN CONVEYOR
TO CONVEYOR
LOT 503 W/H&T SPROCKETS, STEEL TROUGH &
RETURN, SLOPING & SUPPORTS TO GROUND (DRIVE
MOTOR LOT 508)

505 SKK

5 HP/45 RPM GEARHEAD DRIVE MOTOR W/DRIVE
CHAIN (DRIVE FOR LOT 501)

506 SKK

10 HP/45 RPM GEARHEAD DRIVE MOTOR W/DRIVE
CHAIN (DRIVE FOR LOT 502)

507 SKK

5 HP/45 RPM GEARHEAD DRIVE MOTOR W/DRIVE
CHAIN (DRIVE FOR LOT 503)

508 SKK

5 HP/45 RPM GEARHEAD DRIVE MOTOR W/DRIVE
CHAIN (DRIVE FOR LOT 504)

509 1999 SIEMENS

2-SECTION 2,000 AMP MAIN W/(3) 800 AMP
BREAKERS, 480Y/277V, SQ# 19-54547-A10 (NO WIRE
OUTSIDE OF BOX)

510 2001 ULTRAVAR

300 KVAR AUTOMATIC POWER FACTOR
CORRECTING SYSTEM, 480V (NO WIRE OUTSIDE OF
BOX)
VIN / Serial: 3567-002

511 LOT, SQUARE D 37-1/2 KW TRANSFORMER,
240X480 TO
120/240V W/(2) SOLA UPS SYSTEMS (NO WIRE
OUTSIDE OF BOX)

LOT #

512 APPROX 75' 6"X11" BOX CHAIN W/FLITES
CONVEYOR TO
LOT 513 W/H&T SPROCKETS, STEEL TROUGH,
RETURN & SUPPORTS (DRIVE MOTOR LOT 515)

513 USNR

APPROX 45' 6"X11" BOX CHAIN W/FLITES
CONVEYOR TO LOT 514 W/H&T SPROCKETS, STEEL
TROUGH, RETURN & SUPPORTS (DRIVE MOTOR LOT
516)

514 APPROX 50' 6"X11" BOX CHAIN W/FLITES
CONVEYOR TO
LOT 521 W/H&T SPROCKETS, STEEL TROUGH &
RETURN, NO SLOPE SHEETING (DRIVE MOTOR LOT
517)

515 SKK

5 HP/45 RPM GEARHEAD DRIVE MOTOR W/DRIVE
CHAIN (DRIVE FOR LOT 512)

516 SKK

10 HP/68 RPM GEARHEAD DRIVE MOTOR W/DRIVE
CHAIN (DRIVE FOR LOT 513)

517 SKK

3 HP/56 RPM GEARHEAD DRIVE MOTOR W/DRIVE
CHAIN (DRIVE FOR LOT 514)

518 1999 SAS

HYDRAULIC UNIT W/60 HP & 25 HP MOTORS,
ACCUMULATOR, HEAT EXCHANGER AT WALL, (2)
TANK HEATERS (HYDRAULIC UNIT FOR LOT 427)

519 1999 BRUNER

APPROX 24"X60" AIR RECEIVER TANK, 200 PSI (NO
PIPING)

520 PRECISION HUSKY TRUE SLICE 18-66

8-KNIFE CHIPPER W/TOSHIBA 250 HP/1,175 RPM
MOTOR, SIDE INFEED, PARALLEL DISCHARGE

CIPP COLVILLE INDIAN PRECISION PINE - ONLINE ONLY 9/30/2020-10/7/2020

LOT

W/SPARE HOODS, SUPPORTS (IN BASEMENT)
VIN / Serial: C3292

521 SAFTRONICS EZ6-360STACK/EZ START

SOLID STATE STARTER (NO WIRE OUTSIDE OF BOX)
VIN / Serial: 146924

522 ALLEN BRADLEY CENTERLINE BULLETIN 2100

4-SECTION MCC W/(24) SWITCHES (NO WIRE
OUTSIDE OF BOX)

523 MILLPOWER

APPROX 18"X110' BALANCED VIBRATORY
CONVEYOR W/SHARK METAL MAGNET, 1" STROKE,
425 RPM W/BRIDGE SHARK CONTROLS BEHIND LOT
534 PLC
VIN / Serial: 11052

524 APPROX 42' 8"X15" BOX CHAIN W/FLITES CONVEYOR

W/H&T SPROCKETS, STEEL TROUGH & RETURN
W/SUPPORTS TO GROUND

525 SKK GEARHEAD MOTOR (NO DATA) W/DRIVE CHAIN

(DRIVE FOR LOT 524)

526 APPROX 8'H X 8'W X 10'L DUAL SCREW LIVE BOTTOM

SURGE BIN W/SKK GEARHEAD DRIVE MOTOR (NO
DATA), STEEL SUPPORTS & LADDER

527 APPROX 45' 8"X15" BOX CHAIN W/FLITES CONVEYOR TO

SURGE BIN W/H&T SPROCKETS, STEEL TROUGH &
RETURN

528 SCHURMAN

APPROX 60' 6"X11" BOX CHAIN CONVEYOR TO
SURGE BIN W/H&T SPROCKETS

LOT

529 APPROX 24"X68' TROUGHING BELT FROM SURGE

BIN TO
SCREEN W/MDI CR85 METAL DETECTOR W/24" COIL,
STEEL SUPPORTS TO FLOOR
VIN / Serial: 981204

530 SKK

7-1/2 HP/45 RPM GEARHEAD DRIVE MOTOR W/DRIVE
CHAIN (DRIVE FOR LOT 527)

531 SKK

7-1/2 HP/45 RPM GEARHEAD DRIVE MOTOR W/DRIVE
CHAIN (DRIVE FOR LOT 528)

532 SKK

7-1/2 HP/56 RPM GEARHEAD DRIVE MOTOR W/DRIVE
CHAIN (DRIVE FOR LOT 529)

533 APPROX 18"X15' BELT CONVEYOR W/SKK GEARHEAD DRIVE

MOTOR, H&T DRUMS, STEEL TROUGH

534 ALLEN BRADLEY SLC 5/04

CPU W/(5) INPUT & (3) OUTPUT MODULES
W/MARKED ELECTRICS (NO SHARK MAGNET
CONTROLS, NO WIRE OUTSIDE OF BOX)

535 FRANK ELECTRIC/ WESTINGHOUSE

540 KW/1,200 RPM/230V DC MOTOR TO REED
ELECTRIC 300 HP/1,200 RPM/400V AC MOTOR MG
SET

536 BM&M

2-DECK CHIP SCREEN W/STEEL SUBFRAME
VIN / Serial: 10251

537 SUTORBILT

14"X20" ROTARY LOBE BLOWER W/LINCOLN 200 HP
MOTOR, ATTACHED ELECTRICS, STEEL SUBFRAME
(PIPING TO LOT 538)

CIPP COLVILLE INDIAN PRECISION PINE - ONLINE ONLY 9/30/2020-10/7/2020

LOT #**538 ARCHER**

30"X30" CHIP FEEDER W/STEEL FEED CHUTE &
STAND (NO PIPING)

539 SKK

7-1/2 HP/68 RPM GEARHEAD DRIVE MOTOR W/DRIVE
CHAIN (DRIVE FOR LOT 539)

540 MOTOTRONICS PS1-57250P

250 HP/575V SOLID STATE STARTER (NO WIRE
OUTSIDE OF BOX)

**541 LOT, 10" HIGH PRESSURE BLOWPIPE TO LOT
WIG WAG
CHIP LOADING STATION W/SUPPORTS****542 VIBRA PRO 120900F-3/16(MS)39.5F-3HP**

APPROX 12"X38' VIBRATORY CONVEYOR, 1/2"-1-1/8"
STROKE, 450 RPM (TO LOT 543 VIBRATORY)
VIN / Serial: 1156

543 MILLPOWER

APPROX 18"X74' BALANCED VIBRATORY
CONVEYOR (VIBRATORY LOT 423) W/5' TUB, MDI
CR85 METAL DETECTOR, 1" STROKE, 425 RPM,
MARKED STEEL PLATE (NO SLOPE SHEETING),
CATWALK & STEEL SUPPORTS TO GROUND,
MARKED ELECTRICS
VIN / Serial: 031136

**544 MARKED BLOWER CONTROL PANEL
W/IDEALARC**

R3R-300 DC
WELDER (NO WELDING LEADS, NO WIRE OUTSIDE
OF BOX)

**545 APPROX 45' H78 CHAIN W/FLITES CONVEYOR
FROM LOT
543 W/H&T SPROCKETS, STEEL TROUGH, ENCLOSED
RETURN & MARKED STEEL PLATE (DRIVE MOTOR
LOT 549)****LOT #****546 APPROX 18' H78 CHAIN W/FLITES CONVEYOR
FROM LOT
545 W/H&T SPROCKETS, STEEL TROUGH, ENCLOSED
RETURN & SUPPORTS TO FLOOR (DRIVE MOTOR
LOT 550)****547 APPROX 30' 6"X11" BOX CHAIN CONVEYOR
FROM
LOT 546
W/H&T SPROCKETS, STEEL TROUGH, RETURN,
SUPPORTS TO FLOOR & STEEL BRIDGE OVER
CONVEYOR (DRIVE MOTOR LOT 551)****548 APPROX 35' 6"X11" BOX CHAIN CONVEYOR
FROM
LOT 547
W/H&T SPROCKETS, STEEL TROUGH, RETURN &
SUPPORTS (DRIVE MOTOR LOT 552)****549 SKK**

5 HP/45 RPM GEARHEAD DRIVE MOTOR W/DRIVE
CHAIN (DRIVE FOR LOT 545)

550 MITSUBISHI

5 HP/24 RPM GEARHEAD DRIVE MOTOR W/DRIVE
CHAIN (DRIVE FOR LOT 546)

551 SKK

5 HP/25 RPM DOUBLE REDUCTION GEARHEAD
DRIVE MOTOR W/DRIVE CHAIN (DRIVE FOR LOT
547)

552 SKK

3 HP/56 RPM GEARHEAD DRIVE MOTOR W/DRIVE
CHAIN (DRIVE FOR LOT 548)

**553 APPROX 24"X16' BELT CONVEYOR BETWEEN
LOTS
547 &
548 W/H&T DRUMS, STEEL TROUGH & RETURN,
RELIANCE 3 HP MOTOR TO DODGE SHAFT
MOUNTED REDUCER**

CIPP COLVILLE INDIAN PRECISION PINE - ONLINE ONLY 9/30/2020-10/7/2020

LOT

554 SAS

HYDRAULIC UNIT W/40 HP MOTOR, HEAT EXCHANGER, TANK HEATER & VALVE BLOCK, SELF-CONTAINED (NO HYDRAULIC LINES OUTSIDE OF THIS BUILDING; SHARED HYDRAULIC UNIT)

555 UKIAH

SAW GUIDE MIST SYSTEM (NO PIPING OUTSIDE OF THIS BUILDING; SHARED SYSTEM)

556 APPROX 60" FAN W/5 HP MOTOR & KILN
FIN PIPE
RADIATOR (NO PIPING OUTSIDE OF THIS BUILDING)

557 SAS

HYDRAULIC UNIT W/APPROX 30 HP MOTOR, HEAT EXCHANGER & TANK HEATER

558 APPROX 70' H78 CHAIN W/FLITES
CONVEYOR TO
VIBRATORY CONVEYOR LOT 560

559 SKK

7-1/2 HP/37 RPM GEARHEAD DRIVE MOTOR W/DRIVE CHAIN (DRIVE FOR LOT 558)

560 VIBRA PRO

HFR-301500F-1/4CMS60'F-10HP, APPROX 30"X60' VIBRATORY CONVEYOR, 1/2"-1-1/8" STROKE, 460 RPM, 4' TUB W/MDI CCW78 METAL DETECTOR, SUPPORTS
VIN / Serial: 1283

561 APPROX 23"X13' BELT CONVEYOR W/H&T
DRUMS, STEEL
TROUGH, GEARHEAD DRIVE MOTOR (NO DATA)562 LOT, SQUARE D 4 6-SECTION MCC W/(26)
SWITCHES &
SAFTRONICS EZ6-500STACK/EZ-START SOLID STATE
STARTER FOR HOG LOT 221 W/MARKED ELECTRICS
(NO WIRE OUTSIDE OF BOX)

LOT

563 APPROX 48"X72" WATER RECEIVER TANK,
PACO PUMP
W/3/4 HP/3,450 RPM/115-230V MOTOR (NO PIPING)564 SPARE APPROX 60" INSERT TOOTH WHOLE
LOG
CUT OFF
SAW (FITS LOT 206)565 SPARE APPROX 60" INSERT TOOTH WHOLE
LOG
CUT OFF
SAW (FITS LOT 206)566 APPROX 60" FAN W/5 HP MOTOR & KILN
FIN PIPE
RADIATOR (NO PIPING OUTSIDE OF THIS BUILDING)

567 SAS

HYDRAULIC UNIT W/(1) 5 HP & (2) 30 HP MOTORS, (2) HEAT EXCHANGERS, ACCUMULATOR, TANK HEATER, SELF-CONTAINED (HYDRAULIC UNIT FOR LOT 295)

568 1947 MC/C & SONS

APPROX 48"X96" AIR RECEIVER TANK (NO PIPING)

569 APPROX 40' 6"X11" BOX CHAIN W/FLITES
CONVEYOR

W/H&T SPROCKETS, STEEL TROUGH, RETURN & SUPPORTS (NO SLOPE SHEETING) W/MITSUBISHI 3 HP/30 RPM GEARHEAD DRIVE MOTOR

570 APPROX 42' 6"X11" BOX CHAIN W/FLITES
CONVEYOR

W/H&T SPROCKETS, STEEL TROUGH, RETURN & SUPPORTS (NO SLOPE SHEETING) W/MITSUBISHI 3 HP/30 RPM GEARHEAD DRIVE MOTOR

571 LOT, SQUARED D 4 3-SECTION MCC W/(6)
SWITCHES &
SAFTRONICS CA-260 SOLID STATE STARTER, ALLEN
BRADLEY PLC-5/11 PLC W/(3) AC IN & (3) AC OUT, (2)
DC IN & (3) DC OUT, (2) LINEAR POSITIONING

CIPP COLVILLE INDIAN PRECISION PINE - ONLINE ONLY 9/30/2020-10/7/2020

LOT #	LOT #
MODULES, ASSORTED MARKED ELECTRICS (NO WIRE OUTSIDE OF BOX)	BOX) VIN / Serial: 3568
572 APPROX 106' 6"X11" BOX CHAIN W/FLITES CONVEYOR	580 GENCO MPC5
UNDER HEADRIG W/H&T SPROCKETS, STEEL TROUGH, RETURN & SUPPORTS (NO SLOPE SHEETING)	300 HP/880 RPM/180V DC DRIVE MOTOR TO WESTINGHOUSE LIFELINE 300 HP AC MOTOR (NO WIRE OUTSIDE OF BOX)
573 SAS	581 LOT, PARTIAL SQUARE D 4-SECTION POWER STYLE
HYDRAULIC UNIT W/30 HP MOTOR, HEAT EXCHANGER, ACCUMULATOR, TANK HEATER, SELF-CONTAINED (FOR LOT 280 CARRIAGE)	SWITCHBOARD W/2,500 AMP PER SECTION, (5) 800 AMP BOLT-LOC CONTACT SWITCHES W/ULTRAVAR 300 KVAR AUTOMATIC POWER FACTOR CORRECTION SYSTEM (NO WIRE OUTSIDE OF BOX)
574 SAS	582 MG SET (NO DATA)
HYDRAULIC UNIT W/30 HP MOTOR, HEAT EXCHANGER, SELF-CONTAINED (SHARED HYDRAULIC UNIT)	583 LOT, ASSORTED SPROCKETS IN THIS AREA (BEHIND LOT 582)
575 1995 SAS	584 LOT, ASSORTED SPROCKETS IN THIS AREA (BEHIND LOT 585)
HYDRAULIC UNIT W/40 HP MOTOR, HEAT EXCHANGER, LARGE ACCUMULATOR, SELF-CONTAINED VIN / Serial: 919	585 APPROX 36' 6"X11" BOX CHAIN W/FLITES CONVEYOR TO LOT 586 W/H&T SPROCKETS, STEEL TROUGH & RETURN (NO SLOPE SHEETING, ABOVE PAN)
576 TOSHIBA	586 APPROX 46' 6"X11" BOX CHAIN W/FLITES CONVEYOR TO LOT 589 W/H&T SPROCKETS, STEEL TROUGH & RETURN (NO SLOPE SHEETING, ABOVE PAN)
250 HP/1,180 RPM/460V HEADRIG DRIVE MOTOR, 505UZ FRAME (NO WIRE OUTSIDE OF BOX)	587 5 HP/45 RPM GEARHEAD DRIVE MOTOR W/DRIVE CHAIN (DRIVE FOR LOT 585)
577 APPROX 36"X132" AIR RECEIVER TANK (NO PIPING)	588 UNIMOUT 125, US ELECTRIC 125, 10 HP, RATIO 40, INPUT 1,750, OUTPUT TORQUE 20,050
578 SQUARE D	
4-SECTION POWER STYLE SWITCHBOARD W/1,600 AMP PER SECTION (2) 800 AMP BOLT-LOC CONTACT SWITCHES PER SECTION, 480V/277V (NO WIRE OUTSIDE OF BOX)	
579 2001 ULTRAVAR	
100 KVAR AUTOMATIC POWER FACTOR CORRECTION SYSTEM, 480V (NO WIRE OUTSIDE OF	

CIPP COLVILLE INDIAN PRECISION PINE - ONLINE ONLY 9/30/2020-10/7/2020

LOT

589 VIBRA PRO

LS-181200F-3/16(M/S)84'F-7.5HP, APPROX 18"X80"
VIBRATORY CONVEYOR TO LOT 543 VIBRATORY
CONVEYOR, 7/8" STROKE, 440 RPM, SUPPORTS TO
GROUND (NO SLOPE SHEETING)
VIN / Serial: 1284

590A LOT, SQUARE D 4 5-SECTION MCC W/(23)

SWITCHES &
MARKED ELECTRICS IN THIS AREA (NO WIRE
OUTSIDE OF BOX) **SALE MOVES DOWN WALL TO
ELECTRICS ROOM AFTER LOT 590A**

590B LOT, CONTENTS OF ELECTRICS ROOM

W/MARKED TEST
BOXES & LIGHTING ELECTRICS **SALE MOVES TO
ALLEYWAY & COMPRESSOR ROOM AFTER LOT
590B**

591 1984 QNW 740B

ROTARY SCREW COMPRESSOR W/150 HP MOTOR,
AIR COOLED (NO PIPING)
VIN / Serial: 890306

592 1983 QNW 650H

ROTARY SCREW COMPRESSOR W/150 HP MOTOR,
AIR COOLED (NO PIPING)
VIN / Serial: 830543

593 1990 ZURN 253-P

GENERAL REGENERATIVE COMPRESSED GAS
DRYER, 1,550 SCFM AT 100 PSIG (NO PIPING
OUTSIDE OF ROOM)

594 1993 HANSON

400 GALLON AIR RECEIVER TANK, 137 PSIG
VIN / Serial: 344324

595 ALLEN BRADLEY CENTERLINE BULLETIN
2100

4-SECTION MCC W/(11) SWITCHES (NO WIRE
OUTSIDE OF BOX)

LOT

596 AJAY

10 HP/460V TWIN CYLINDER HORIZONTAL TANK
MOUNTED COMPRESSOR, 175 PSI, ATTACHED
ELECTRICS

597 APPROX 8'H X 9'W X 22'L STEEL CAGE
W/(2) 36"
DOORS598 APPROX 4-1/2'H X 4'D X 8'L
2-COMPARTMENT BOTTLE
RACKS W/FORK POCKETS599 APPROX 4-1/2'H X 4'D X 8'L
2-COMPARTMENT BOTTLE
RACKS W/FORK POCKETS600 HYDRAULIC SHOP PRESS W/3/4
HP/230-460V PUMP,
APPROX 36"W X 32"H OPENING, ATTACHED HOSE
REEL

601 AVEY

24" SWING DRILL PRESS W/T-SLOT TABLE, 440V
VIN / Serial: 25026

602 LOT, MILWAUKEE 7" DE GRINDER, 1/2
HP/3,450 RPM,
115V W/MARKED BENCH & (4) WOOD CABINETS
W/CONTENTS603 LOT, MARKED ELECTRICS IN THIS AREA
W/TRANSFORMER

BY ROLL UP DOOR TO PARTS ROOM (NO WIRE
OUTSIDE OF BOX)

604 LOT, 5/8" T X 48" W X 96" L & 1/2" T X 54"
DIA TABLES
WELDED TO STAIRS & FLOOR (MUST BE CUT
LOOSE)605 LOT, DESPATCH WELDING ROD OVEN
W/STEEL TABLE

CIPP COLVILLE INDIAN PRECISION PINE - ONLINE ONLY 9/30/2020-10/7/2020

LOT #	LOT #
606 LOT, JET 1-TON ELECTRIC CHAIN HOIST W/PENDANT CONTROLS W/APPROX 20' JIB ARM & TROLLEY	618 LOT, (3) TIFCO 40-COMPARTMENT BOLT BINS W/CONTENTS
607 LOT, JET 1-TON ELECTRIC CHAIN HOIST W/PENDANT CONTROLS W/APPROX 20' JIB ARM & TROLLEY	619 LOT, WOOD CABINETS W/CONTENTS
608 APPROX 20' JIB ARM	620 EAGLE 1947 45 GALLON FLAMMABLES CABINET
609 4" SHOP VISE ON STAND	621 72" CUT OFF SAW B (FITS LOT 252)
610 HORIZONTAL METAL CUTTING BANDSAW W/3/4 HP/1,725 RPM/115-230V MOTOR, 8' 11"X3/4" BLADE	622 72" CUT OFF SAW B (FITS LOT 252)
611 LOT, ALL MARKED WOOD CABINETS & SHELVES W/CONTENTS & CONTENTS OF OFFICE	623 LOT, ASSORTED BEARINGS ON THESE (16) SHELVES (NO SHELVES)
612 APPROX 4' DIA X 12'L OIL TANK W/STAND & PNEUMATIC PUMP	624 LOT, ASSORTED BEARINGS ON THESE (16) SHELVES (NO SHELVES)
613 APPROX 4' DIA X 12'L OIL TANK W/STAND & PNEUMATIC PUMP	625 LOT, ASSORTED BUSHINGS ON THIS SIDE OF SHELVES (NO SHELVES)
614 APPROX 4' DIA X 12'L OIL TANK W/STAND	626 LOT, ASSORTED VIBRATORY CONVEYOR PARTS & ASSORTED ITEMS ON THIS SIDE OF SHELVES (NO SHELVES)
615 LOT, PRECISION CHIPPER PARTS FOR LOT 520 W/SHELF	627 LOT, ASSORTED CHAIN, PINS & LINK ON THESE (14) SHELVES (NO SHELVES)
616 LOT, (3) TIFCO 40-COMPARTMENT BOLT BINS W/CONTENTS	628 LOT, ASSORTED MACHINERY PARTS ON THESE (16) SHELVES (NO SHELVES)
617 LOT, (3) TIFCO 40-COMPARTMENT BOLT BINS W/CONTENTS	629 LOT, ASSORTED MACHINERY PARTS ON THESE (16) SHELVES (NO SHELVES)
	630 LOT, ASSORTED MACHINERY PARTS ON THESE (8) SHELVES (NO SHELVES)

CIPP COLVILLE INDIAN PRECISION PINE - ONLINE ONLY 9/30/2020-10/7/2020

LOT #**631 USNR C2-0119**

3,000 PSI TEMPOSONIC CYLINDER
VIN / Serial: BB286641A

632 LOT, ASSORTED CYLINDERS IN THIS AREA**633 LOT, ASSORTED CYLINDERS W/O-RINGS IN THIS AREA****634 LOT, ASSORTED CYLINDERS ON THESE (2) SHELVES & ON FLOOR****635 LOT, ASSORTED CYLINDERS ON THESE (3) SHELVES****636 LOT, (11) SECTIONS OF 2'D X 4'W X 8'L METAL**

SHELVES W/PLYWOOD & (2) SECTIONS OF 2'D X 4'W X 8'L METAL SHELVES W/PLYWOOD (MUST WAIT UNTIL EMPTY TO REMOVE. PLEASE CONSULT AUCTION SITE PRIOR TO REMOVAL)

637 LOT, ALL ASSORTED BELTS IN THIS AREA**638 LOT, ALL ASSORTED MILL PARTS OR SUPPLIES ON THESE (32) SHELVES (NO SHELVES)****639 LOT, ALL ASSORTED MILL PARTS OR SUPPLIES ON THESE (32) SHELVES (NO SHELVES)****640 LOT, ALL ASSORTED MILL PARTS OR SUPPLIES ON THESE (32) SHELVES (NO SHELVES)****641 LOT, ALL ASSORTED MILL PARTS OR SUPPLIES ON THESE (32) SHELVES (NO SHELVES)****LOT #****642 LOT, ALL ASSORTED MILL PARTS OR SUPPLIES ON THESE (32) SHELVES (NO SHELVES)****643 LOT, ALL ASSORTED FILTERS IN THIS AREA****644 LOT, (20) SECTIONS OF 2'D X 4'W X 7'L METAL**

SHELVES W/PLYWOOD (MUST WAIT UNTIL EMPTY TO REMOVE. PLEASE CONSULT AUCTION SITE PRIOR TO REMOVAL)

645 LOT, BEVERAGE MT-27 GLASS FRONT PEPSI COOLER

W/CONTENTS OFFICE

646 LOT, LARGE STEEL RACK W/ASSORTED PIPING**647 LOT, STEEL RACK W/ASSORTED CONDUIT****648 WELLONS**

APPROX 160-UNIT SILO, APPROX 28' DIA X 75'H SWIZZLE STICK CLEANER W/MOTOR TO REDUCER, APPROX 30' 8"X15" BOX CHAIN FUEL CONVEYOR TO BOILER W/DRIVE MOTOR & MARKED ELECTRICS

649 WELLONS

APPROX 160-UNIT SILO, APPROX 28' DIA X 75'H SWIZZLE STICK CLEANER W/MOTOR TO REDUCER, APPROX 30' 6"X11" BOX CHAIN FUEL CONVEYOR TO BOILER W/DRIVE MOTOR & MARKED ELECTRICS

650 APPROX 150' 8"X15" BOX CHAIN W/FLITES CONVEYOR

FROM HOG OUTFEED CONVEYOR TO SILO LOT 648, S-DRIVE, STEEL TROUGH & RETURN W/SUPPORTS ON TOP OF BIN LOT 229

651 SKK

20 HP/20 RPM GEARHEAD DRIVE MOTOR W/DRIVE CHAIN (DRIVE FOR LOT 650)

CIPP COLVILLE INDIAN PRECISION PINE - ONLINE ONLY 9/30/2020-10/7/2020

LOT #**652 1985 NEBRASKA**

350 PSI, 20,000 LB/HR HOG FUEL FIRED BOILER
W/CLEAVER BROOKS SPRAYMASTER DEAERATOR
TANK & SUPPORT EQUIPMENT, WELLONS FUEL
FIRED BOILER, S/N:3916-1301 (NO DATA) W/SUPPORT
EQUIPMENT (NOTE: ELECTRICS & CONTROLS ARE
PARTIAL, PIPING TO WALL, APPROX 40'H X 32'W X
70'L ALL STEEL BUILDING (NO CONDUIT OR WIRE)
VIN / Serial: B2147

653 WELLONS

FLY ASH RECOVERY SYSTEM W/10 HP BLOWER &
PIPING (ALL OTHER BLOWERS SOLD SEPARATELY),
MARKED CLEAN OUTS & SUPPORT STRUCTURES

654 WELLONS

FLY ASH RECOVERY SYSTEM W/APPROX 25 HP
BLOWER & PIPING (ALL OTHER BLOWERS SOLD
SEPARATELY), MARKED CLEAN OUTS, ELECTRICS
& SUPPORT STRUCTURES

655 2002 NYB SERIES 20

GI FAN, 11,630 CFM, TYPE LS-404 WHEEL SIZE
W/BALDOR 40 HP/1,760 RPM MOTOR (FOR LOT 653,
NO PIPING)

656 NORTHERN BLOWER 19816-1102

ID FAN, SIZE 3300 W/BALDOR 75 HP/1,780 RPM
MOTOR (FOR LOT 653, NO PIPING)

657 2002 NYB SERIES 20

GI FAN, 11,630 CFM, TYPE LS-404 WHEEL SIZE
W/BALDOR 40 HP/1,760 RPM MOTOR (FOR LOT 654,
NO PIPING)

658 NORTHERN BLOWER 19816-1102

ID FAN, SIZE 3300 W/BALDOR 75 HP/1,780 RPM
MOTOR (FOR LOT 654, NO PIPING)

LOT #**659 METALLIC BRAND**

APPROX 16'-18'H X 18'D X 28'L ALL STEEL BUILDING
W/SPRINKLERS (NO CONDUIT OR WIRE,
MACHINERY HAS PRIORITY OVER BUILDING)

660 CAT V110

(NOT OPERATING) 11,000 LB CAPACITY FORKLIFT,
PERKINS DIESEL ENGINE, 218" 2-STAGE MAST W/48"
FORKS, SIDE SHIFT, DUAL PNEUMATIC TIRES
VIN / Serial: 13V01760

**662 LOT, ASSORTED MARKED TIMBERS IN YARD
(BUYER**

RESPONSIBLE FOR LOADING)

**663 APPROX 20'-25'H X 115'L X 175'W ALL
STEEL BOLT**

TOGETHER LUMBER STORAGE BUILDING TIN
ALONG THE BACK WALL, (2) ROWS OF APPROX 6"
DIA PIPE SUPPORTS, APPROX 12'X12' METAL
BUILDING & HALF STEEL TANK (NO CONDUIT OR
WIRE, MACHINERY HAS PRIORITY OVER BUILDING)

664 WIG WAG

RAILCAR LOADING STATION W/SINGLE CAR
LOADING CHUTE, CABLE WINCH & CONTROLS,
SUPPORT FRAME (PIPING SOLD AT LOT 541)

**665 APPROX 8'H X 6'W X 18'L METAL CLAD
WOOD FRAMED**

BUILDING (NO CONDUIT OR WIRE, MACHINERY
HAS PRIORITY OVER BUILDING)

671 WELLONS

32'X88' COMPUTERIZED MULTI-ZONAL ALL
ALUMINUM DRY KILN W/(8) INDIVIDUALLY
MOTORIZED ALUMINUM 60" FANS & VENTS W/15
HP/880 RPM MOTORS, USNR CONTROLS, FISHER
VALVES, PIPING INSIDE MARKED SECTION OF
CONTROL HOUSE, SPRINKLER SYSTEM VALVE &
PIPING (NO RAIL)

CIPP COLVILLE INDIAN PRECISION PINE - ONLINE ONLY 9/30/2020-10/7/2020

LOT #**672 WELLONS**

32'X88' COMPUTERIZED MULTI-ZONAL ALL
ALUMINUM DRY KILN W/75 HP LINE SHAFT W/(8)
60" ALUMINUM FANS, WELLONS & USNR
CONTROLS, FISHER VALVES, PIPING INSIDE
MARKED SECTION OF CONTROL HOUSE,
SPRINKLER SYSTEM VALVE & PIPING (NO RAIL)

673 WELLONS

32'X88' COMPUTERIZED MULTI-ZONAL ALL
ALUMINUM DRY KILN W/75 HP LINE SHAFT W/(8)
60" ALUMINUM FANS, WELLONS & USNR
CONTROLS, FISHER VALVES, PIPING INSIDE
MARKED SECTION OF CONTROL HOUSE (NO RAIL)

674 WELLONS

32'X88' COMPUTERIZED MULTI-ZONAL ALL
ALUMINUM DRY KILN W/75 HP LINE SHAFT W/(8)
60" ALUMINUM FANS, WELLONS & USNR
CONTROLS, FISHER VALVES, PIPING INSIDE
MARKED SECTION OF CONTROL HOUSE (NO RAIL)

675 WELLONS

32'X88' COMPUTERIZED MULTI-ZONAL ALL
ALUMINUM DRY KILN W/75 HP LINE SHAFT W/(8)
60" ALUMINUM FANS, WELLONS & USNR
CONTROLS, FISHER VALVES, PIPING INSIDE
MARKED SECTION OF CONTROL HOUSE (NO RAIL)

677 LOT, APPROX 5,100' OF KILN TRACK**678 LOT, STEAM PIPE FROM KILNS TO BOILER HOUSE**

OUTSIDE WALL W/SUPPORTS, STEAM RECOVERY
TANK, PUMPS & ELECTRICS

679 APPROX 24'-28'H X 130'W X 115'L ALL STEEL BOLT TOGETHER COOLING SHED W/ADDITIONAL APPROX 6" PIPE SUPPORTS W/APPROX 20'-22'H X 34'W X 86'L ALL STEEL BOLT TOGETHER BUILDING ADDITION, SPRINKLERS & LIGHTS (NO CONDUIT OR WIRE, MACHINERY HAS PRIORITY OVER**LOT #****680 LOT, (89) 4"X4" TUBE CONSTRUCTION 48"X106" KILN CARTS W/6' CENTERS IN THIS ROW (BUYER RESPONSIBLE FOR LOADING)****681 LOT, (64) 4"X4" TUBE CONSTRUCTION 48"X106" KILN CARTS W/6' CENTERS IN THIS ROW (BUYER RESPONSIBLE FOR LOADING)****682 LOT, (74) 4"X4" TUBE CONSTRUCTION 48"X106" KILN CARTS W/6' CENTERS IN THIS ROW (BUYER RESPONSIBLE FOR LOADING)****683 LOT, (64) 4"X4" TUBE CONSTRUCTION 48"X106" KILN CARTS W/6' CENTERS IN THIS ROW (BUYER RESPONSIBLE FOR LOADING)****684 LOT, (96) 4"X6" TUBE CONSTRUCTION 48"X106" KILN CARTS W/6' CENTERS IN THIS ROW (BUYER RESPONSIBLE FOR LOADING)****685 STETSON ROSS 6-14D**

8"X15" PLANER, 20-KNIFE, 130 HP TOP HEAD,
20-KNIFE 65 HP BOTTOM HEAD & 16-KNIFE 35 HP
SIDE HEADS, (6) HYDRAULIC DRIVEN FEED ROLLS
W/PLANER SPIDER & PIPING TO MAIN BLOWPIPE,
MARKED CONTROLS, JIB ARM & WOOD CABINET,
WOOD BUILDING & SUPPORT STRUCTURE UNDER
PLANER (HYDRAULIC UNITS SOLD AT LOTS 884 &
885, SPARE PARTS SOLD AT LOTS 734 & 735)
VIN / Serial: 4279

686 STETSON ROSS

20' HYDRAULIC DRIVEN DUAL PINEAPPLE FEED
TABLE W/SLOW DOWN ROLL, (2) CHROME SPIRAL &
(4) SMOOTH 10"X30" CANTED ROLLS, 8' 5-STRAND
81X INFEED TRANSFER, HOLD OVER SHOE, 50 HP
MOTOR, ASSOCIATED CATWALK & MARKED
SUPPORTS

CIPP COLVILLE INDIAN PRECISION PINE - ONLINE ONLY 9/30/2020-10/7/2020

LOT #**687 STETSON ROSS/KIMWOOD**

24' HYDRAULIC DRIVEN LIVE BRIDGE W/(11)
10"X14" SMOOTH CANTED ROLLS

688 APPROX 17"X24' OUTFEED BELT TRANSFER
W/H&T DRUMS,
STEEL TROUGH & HYDRAULIC DRIVE MOTOR,
SUPPORTS TO 1ST HORIZONTAL BEAM

689 APPROX 17"X38' OUTFEED BELT TRANSFER
W/H&T DRUMS,
STEEL TROUGH & HYDRAULIC DRIVE MOTOR,
SUPPORTS TO 1ST HORIZONTAL BEAM

690 APPROX 30"X60" HYDRAULIC DRIVEN SLOW
DOWN BELTS
W/MARKED SUPPORTS

692 APPROX 15' 5-STRAND H78 RE-ENTRY
TRANSF3ER

W/H-SHAFT & T-SPROCKETS, MARKED STEEL
SUPPORTS TO FLOOR (NO CATWALK OR STAIRS
SUPPORTS)

693 SKK

DOUBLE REDUCTION GEARHEAD MOTOR (NO
DATA)

694 LOT, (2) 4" & 6", 2" 16-KNIFE PLANER
HEADS W/RACK

695 ALLEN BRADLEY CENTERLINE BULLETIN
2100

5-SECTION MCC W/(18) SWITCHES, POWERFLEX 700
40 HP DRIVE,(2) VS DRIVES & BRAKE (NO WIRE
OUTSIDE OF BOX)

696 APPROX 20' 5-STRAND 81X INFEEED TRANSFER

W/H-SHAFT, T-SPROCKETS, MARKED SUPPORTS (NO
CATWALK)

LOT #**697 APPROX 18' 5-STRAND 81X INFEEED TRANSFER**

W/H-SHAFT, T-SPROCKETS, 3' 6-ARM TIPPLE,
MARKED SUPPORTS (NO CATWALK)

698 SEW

GEARHEAD DRIVE MOTOR (NO DATA) W/DRIVE
CHAIN (DRIVE FOR LOT 696)

699 SEW

GEARHEAD DRIVE MOTOR (NO DATA) W/DRIVE
CHAIN (DRIVE FOR LOT 697)

700 APPROX 24"X96' DROP OUT BELT
CONVEYOR,
H&T DRUMS,
STEEL TROUGH, SUPPORTS TO FLOOR

701 TOSHIBA

7-1/2 HP MOTOR TO SKK 230 RPM REDUCER
W/DRIVE CHAIN (DRIVE FOR LOT 700)

702 2004 WAGNER APEX

MOISTURE DETECTOR SYSTEM W/(4) SENSORS
VIN / Serial: APEXC255A

703 APPROX 9' 4-STRAND 81X LUGGED
TRANSFER W/H-SHAFT,
T-SPROCKETS, MARKED SUPPORTS (NO CATWALK)

704 SEW

GEARHEAD DRIVE MOTOR (NO DATA) W/DRIVE
CHAIN (DRIVE FOR LOT 703)

705 6-ARM LUG LOADER W/BOARD HOOKS &
CARRY OVER
WHEELS, 5' 6-STRAND 81X TRANSFER, OVER ARM
TOWER, H-SHAFT, T-SPROCKETS, MARKED
SUPPORTS (NO CATWALK)

CIPP COLVILLE INDIAN PRECISION PINE - ONLINE ONLY 9/30/2020-10/7/2020

LOT #

**706 APPROX 12' 5-STRAND 81X TRANSFER
W/H-SHAFT,
T-SPROCKETS, MARKED SUPPORTS (NO CATWALK)**

707 SEW

GEARHEAD DRIVE MOTOR (NO DATA) W/DRIVE
CHAIN (DRIVE FOR LOT 706)

**708 APPROX 12"X50' STICKER RECOVERY BELT
TRANSFER**

W/H&T DRUMS, STEEL TROUGH, MARKED SLOPING
& SUPPORTS TO GROUND

709 SKK

5 HP/155 RPM GEARHEAD DRIVE MOTOR W/DRIVE
CHAIN (DRIVE FOR LOT 708)

**710 20' 6-ARM X 57" HYDRAULIC OPERATED
BREAKDOWN**

HOIST W/TOSHIBA 40 HP HYDRAULIC UNIT, HEAT
EXCHANGER, TANK HEATER, SELF-CONTAINED

**711 APPROX 24' 5-STRAND 81X INFEEED
TRANSFER, S-DRIVE,
STEEL RACES, SUPPORTS TO GROUND****712 SEW**

20 HP/37.63:1 RATIO GEARHEAD DRIVE MOTOR
W/DRIVE CHAIN (DRIVE FOR LOT 711)

**713 LOT, ALLEN BRADLEY CENTERLINE
BULLETIN 2100
3-SECTION MCC W/(11) SWITCHES, (5) POWERFLEX
70 DRIVES, (3) 5 HP & (2) 3 HP, ALLEN BRADLEY SLC
5/04 CPU W/(6) INPUT & (6) OUTPUT MODULES &
MARKED HEATER (NO WIRE OUTSIDE OF BOX)****714 LOT, MARKED BAR GRATING CATWALK,
STAIRS &
SUPPORTS TO FEED TABLE CONTROLS****LOT #**

**715 APPROX 19'-20'H X 25'W X 125'L
ADDITION OVER
PLANER LINE W/ROOF, SOUTH & WEST WALLS (NO
LEGS ON EAST SIDE), SPRINKLERS, LIGHTS &
INSULATION (NO CONDUIT OR WIRE, MACHINERY
HAS PRIORITY OVER BUILDING)**

716 STETSON ROSS 6-16A-1

AUTOMATIC 6"X16" PLANER, 16-KNIFE APPROX 100
HP TOP HEAD, 16-KNIFE APPROX 50 HP BOTTOM
HEAD & 12-KNIFE APPROX 35 HP SIDE HEADS, (6)
HYDRAULIC DRIVEN FEED ROLLS, MARKED
PLANER HEADS, WAGNER 683 PASS THRU
MOISTURE DETECTOR, OVERHEAD CRANE,
MARKED CONTROLS & ELECTRICS, PLANER SPIDER
& PIPING TO MAIN PIPING, WOOD BUILDING &
SUPPORT STRUCTURE (HYDRAULIC UNITS SOLD AT
LOTS 885-887)

**717 20' HYDRAULIC DRIVEN SINGLE PINEAPPLE
FEED TABLE
W/SLOW DOWN ROLL, (7) 16"X33" CANTED
TORPEDO ROLLS, 3-1/2' 6-STRAND ROLLER CHAIN
INFEEED W/8' HYDRAULIC DRIVEN LIVE BRIDGE
W/(3) 16"X16" ROLLS, SUPPORTS TO GROUND****718 APPROX 14"X20' OUTFEED BELT TRANSFER
W/H&T DRUMS,
STEEL TROUGH & HYDRAULIC DRIVE MOTOR****719 APPROX 14"X32' OUTFEED BELT TRANSFER
W/H&T DRUMS,
STEEL TROUGH & HYDRAULIC DRIVE MOTOR****720 APPROX 30"X72" PLANER SLOW DOWN BELT
W/HYDRAULIC**

DRIVE MOTOR

**721 APPROX 22"X26' REJECT BELTS W/H&T
DRUMS, STEEL
TROUGH, SLOPING & SUPPORTS****722 SKK**

3 HP/30 RPM GEARHEAD DRIVE MOTOR W/DRIVE
CHAIN (DRIVE FOR LOT 721)

CIPP COLVILLE INDIAN PRECISION PINE - ONLINE ONLY 9/30/2020-10/7/2020

LOT #**723 APPROX 12' 6-STRAND H78 TRANSFER W/3' 6-STRAND**81X TIPPLE, H-SHAFT, T-SPROCKETS, MARKED
SUPPORTS W/ASSOCIATED CATWALK**724 APPROX 9' 6-STRAND 81X TRANSFER W/2-1/2' EVEN END**
CHAIN & GRAVITY ROLLS W/H-SHAFT,
T-SPROCKETS, PLATE & ASSOCIATED CATWALK
(NO SUPPORTS)**725 SKK**5 HP/56 RPM GEARHEAD DRIVE MOTOR W/DRIVE
CHAIN (DRIVE FOR LOT 723)**726 TOSHIBA**3 HP MOTOR TO SKK 56 RPM REDUCER W/DRIVE
CHAIN (DRIVE FOR LOT 724)**727 LOT, 12' 6-STRAND 81X LUGGED**
TRANSFER, 8'
6-STRAND 81X TRANSFER & 13' 7-STRAND 81X
TRANSFERS W/ALL DRIVE MOTORS, H-SHAFTS &
T-SPROCKETS, STEEL RACES, PLATE & SUPPORTS
TO FLOOR**728 20' 5-ARM 57" HYDRAULIC OPERATED**
BREAKDOWN TILT
HOIST W/1994 SAS HYDRAULIC UNIT W/LINCOLN 40
HP MOTOR, HEAT EXCHANGER, TANK HEATER,
SELF-CONTAINED**729 APPROX 24' 5-STRAND H78 INFEED TRANSFER**
W/S-DRIVE, STEEL RACES & SUPPORTS**730 SKK**20 HP/20 RPM GEARHEAD DRIVE MOTOR W/DRIVE
CHAIN (DRIVE FOR LOT 729)**731 STICKER RECOVERY SYSTEM W/APPROX**
12"X50" STICKER
RECOVERY BELT TO APPROX 10' 2-STRAND
UNSCRAMBLER TO APPROX 17' 2-STRAND TOP**LOT #**TRANSFER TO APPROX 31' 2-STRAND CART
TRANSFER, ALL SKK DRIVES W/(4) EXTRA STICKER
RACKS OUTSIDE**732 SQUARE D**4-SECTION POWER STYLE SWITCHBOARD W/(2)
2,500 AMP & (2) 1,600 AMP SECTIONS, (1) 1,200 AMP &
(5) 800 AMP SWITCHES, 480Y/277V (NO WIRE
OUTSIDE OF BOX)**733 ULTRAVAR**100 KV AUTOMATIC POWER FACTOR CORRECTION
SYSTEM (NO WIRE OUTSIDE OF BOX)**734 LOT, ASSORTED MIXED STETSON ROSS**
PLANER PARTS
(PLEASE INSPECT)**735 LOT, ASSORTED MIXED STETSON ROSS**
PLANER PARTS
(PLEASE INSPECT)**736 NEWMAN G280**

TUB GRINDER

737 ROLEY 228

TRAVEL BED PROFILE GRINDER

738 WAAGE

4,200 WATT BABBIT POT W/HOOD

739 LOT, PLANER HEAD SETUP STAND, DE
GRINDER, STEEL
2-DOOR CABINET, WOOD CABINETS & SHELVES
W/CONTENTS**740 SQUARE D 4**8-SECTION MCC W/(34) SWITCHES (NO WIRE
OUTSIDE OF BOX)

CIPP COLVILLE INDIAN PRECISION PINE - ONLINE ONLY 9/30/2020-10/7/2020

LOT #

741 LOT, MARKED METAL BINS & DRAWERS IN MIDDLE OF THE ROOM W/MARKED BINS & SHELVES ON EITHER SIDE OF 740

742 APPROX 1/4"X48"X80" STEEL TABLE W/SWIVEL BASE VISE

743 LOT, MAKITA MILLING MACHINE ON STEEL TABLE

W/21-1/2" CHIPPER KNIVES W/HOSE REEL ON WALL

744 LOT, MARKED ELECTRICS (NO BUSS GUTTER OR WIRE OUTSIDE OF BOXES)

745 LOT, CONTENTS OF PARTS ROOM & OFFICE

746 APPROX 25' 5-STRAND 81X TRANSFER W/H-SHAFT,

T-SPROCKETS, STEEL PLATE & SUPPORTS

747 TOSHIBA

3 HP MOTOR TO SKK 20 RPM DOUBLE REDUCTION REDUCER W/DRIVE CHAIN (DRIVE FOR LOT 746)

748 APPROX 11' 7-STRAND H78B LUMBER LANDING TABLE W/GEARHEAD DRIVE MOTOR, H-SHAFT, T-SPROCKETS, STEEL PLATE & SUPPORTS, GRAVITY ROLLS

749 APPROX 56' 5-STRAND 81X TRANSFER W/GEARHEAD DRIVE MOTOR, H&T SHAFTS, STEEL RACES & SUPPORTS

750 LOT, MARKED CATWALK & STAIRS FROM MAIN PLANER & GREEN CHAIN BUILDING TO TRIMMER/SORTER BUILDING W/MARKED SUPPORTS

LOT #

751 LAMB

APPROX 24"X36" HX-5 HAMMER HOG W/BROOKS 250 HP/1,760 RPM MOTOR, MARKED STEEL CHUTE, STEEL SUBFRAME, SPARE HAMMERS
VIN / Serial: 340122-1

752 APPROX 30"X45' CHEVRON BELT INFEED CONVEYOR, H&T DRUMS, STEEL FRAME & CATWALK

753 SKK

5 HP/45 RPM GEARHEAD DRIVE MOTOR W/DRIVE CHAIN (DRIVE FOR LOT 752)

754 APPROX 45" BLOWER W/TOSHIBA 150 HP MOTOR W/PIPING TO HOG LOT 751 & APPROX 18" TO TRIMMER LOT 785

755 APPROX 45-UNIT HYDRAULIC OPERATED FUEL BIN W/20' GATES & 20 HP HYDRAULIC UNIT, WOOD SIDE WALLS W/CROSS TOP CONVEYOR (CYCLONE SOLD AT LOT 759, PIPING TO HOG SOLD AT LOT 763)

756 APPROX 40-UNIT HYDRAULIC OPERATED FUEL BIN W/20' GATES & WOOD SIDE WALLS

757 LOT, (2) APPROX 40-UNIT HYDRAULIC OPERATED FUEL BINS W/CROSS TOP CONVEYOR, 20 HP HYDRAULIC UNIT, WOOD WALLS (CYCLONE SELLS AT LOT 758)

758 APPROX 8' DIA CYCLONE W/MARKED STAND TO GROUND (PIPING SELLS AT LOT 762)

759 APPROX 6' DIA CYCLONE W/MARKED STAND TO GROUND (NO PIPING)

CIPP COLVILLE INDIAN PRECISION PINE - ONLINE ONLY 9/30/2020-10/7/2020

LOT #	LOT #
760 ARCHER	770 APPROX 25' 6-STRAND 81X TRANSFER W/H-SHAFT,
APPROX 60" BLOWER W/RELIANCE 200 HP/1,785 RPM MOTOR (NO PIPING)	T-SPROCKETS & MARKED SUPPORTS TO FLOOR
761 SAFTRONICS EZ6-180	771 SEW
SOFT START (NO WIRE OUTSIDE OF BOX)	3 HP/102 HP GEARHEAD DRIVE MOTOR W/DRIVE CHAIN (DRIVE FOR LOT 768)
762 LOT, APPROX 36" DIA PIPING FROM END OF PLANER	772 SEW
SPIDER LOTS 685 & 716 & PIPING TO CYCLONE LOT 758 & APPROX 18" PIPING TO LOT 785	3 HP/102 HP GEARHEAD DRIVE MOTOR W/DRIVE CHAIN (DRIVE FOR LOT 769)
763 LOT, APPROX 24" DIA PIPING FROM CYCLONE	773 SEW
LOT 759 TO BLOWER LOT 754 W/STEEL STAND	3 HP/102 HP GEARHEAD DRIVE MOTOR W/DRIVE CHAIN (DRIVE FOR LOT 770)
764 SQUARE D 5	774 LOT, MARKED LASER LIGHT, CONTROLS, INTERCOM,
2-SECTION MCC W/(8) SWITCHES (NO WIRE OUTSIDE OF BOX)	HEATER & GRADING LIGHT BY LOT 768
765 BENSHAW CBRSM6SB-300-480-3K	775 APPROX 7' 7-STRAND H78B LUMBER LANDING TABLE
300 HP SOFT START (NO WIRE OUTSIDE OF BOX)	W/H-SHAFT & STEEL PLATE (NO SUPPORTS)
766 MILL POWER	776 APPROX 12' 9-STRAND 81X TRANSFER W/H-SHAFT,
APPROX 18"X46' VIBRATORY CONVEYOR (UNDER TRIMMER), 1" STROKE. 433 RPM W/SLOPING VIN / Serial: 051211	T-SPROCKETS, UHMW LINED STEEL RACES (NO SUPPORTS)
767 SAFTRONICS	777 APPROX 8'X8" 6-STRAND DECLINE BELT TRANSFER, H&T
APPROX 150 HP SOFT START FOR LOT 754 (NO WIRE OUTSIDE OF BOX)	DRUMS & LUMBER STOP ARMS (NO SUPPORTS)
768 APPROX 7' 7-STRAND H78B LUMBER LANDING TABLE	778 SEW
W/H-SHAFT, STEEL PLATE & MARKED SUPPORTS TO FLOOR	3 HP/102 RPM GEARHEAD DRIVE MOTOR W/DRIVE CHAIN (DRIVE FOR LOT 775)
769 APPROX 15' 9-STRAND H78 TRANSFER W/H-SHAFT,	
T-SPROCKETS & MARKED SUPPORTS TO FLOOR	

CIPP COLVILLE INDIAN PRECISION PINE - ONLINE ONLY 9/30/2020-10/7/2020

LOT #**779 SEW**

3 HP/102 RPM GEARHEAD DRIVE MOTOR W/DRIVE
CHAIN (DRIVE FOR LOT 776)

780 SEW

3 HP/102 RPM GEARHEAD DRIVE MOTOR W/DRIVE
CHAIN (DRIVE FOR LOT 777)

**781 LOT, MARKED LASER LIGHT, CONTROLS,
MONITOR,**

INTERCOM, HEATER & GRADING LIGHTS BY LOTS
775-777

785 2003 TECO ENGINEERING

PLANER MILL TRIMMER W/(11) INDIVIDUALLY
MOTORIZED AIR LIFT SAWS W/7-1/2 HP/3,500 RPM
MOTORS, 20' CUT, 26' PASS, ZERO SAW, 3-STAGE
FENCE, 21' 2-SECTION 81X LUGGED FEED THRU
TRANSFER W/EVEN END ROLLS, MARKED
CONTROLS, MARKED ASSOCIATED CATWALK &
SUPPORTS

**786 APPROX 5' 6-STRAND 81X LUG LOADER
W/CARRY OVER**

WHEELS, LUMBER STOPS & OVERHEAD ARMS,
SUPPORTS TO 1ST HORIZONTAL BEAM

787 APPROX 6' 5-STRAND 81X INFEED

TRANSFER W/H-SHAFT,
T-SPROCKETS, SUPPORTS TO 1ST HORIZONTAL
BEAM

788 APPROX 8' 5-STRAND 81X INFEED

TRANSFER W/H-SHAFT,
T-SPROCKETS, SUPPORTS TO 1ST HORIZONTAL
BEAM

789 SEW

3 HP/102 RPM GEARHEAD DRIVE MOTOR W/DRIVE
CHAIN (DRIVE FOR LOT 785)

LOT #**790 SEW**

3 HP/102 RPM GEARHEAD DRIVE MOTOR W/DRIVE
CHAIN (DRIVE FOR LOT 786)

791 SEW

3 HP/102 RPM GEARHEAD DRIVE MOTOR W/DRIVE
CHAIN (DRIVE FOR LOT 787)

792 SEW

3 HP/102 RPM GEARHEAD DRIVE MOTOR W/DRIVE
CHAIN (DRIVE FOR LOT 788)

793 LUCIDYNE COLOR SCAN 200

GRADE MARK READER W/OVER ARM & CONTROLS
IN ROOM

794 LOT, ALLEN BRADLEY LOGIX 5555 CPU W/(1)

ETHERNET/IP, (1) CONTROL NET, (1) COUNTER, (1)
ANALOG INPUT, (2) ANALOG OUTPUT, (7) DC INPUT
& AC INPUT MODULES W/ALLEN BRADLEY 5555 PLC
W/(1) CONTROL NET & (8) RELAY OUTPUT
MODULES, MARKED COMPUTERS & MONITORS

**795 LOT, ALLEN BRADLEY 6-SECTION MCC
W/(28) SWITCHES,**

(1) ALLEN BRADLEY POWERFLEX 700 50 HP & (4)
ALLEN BRADLEY POWERFLEX 70 5 HP DRIVES (NO
WIRE OUTSIDE OF BOX)

**796 LOT, (2) ALLEN BRADLEY POWERFLEX 70 10
HP DRIVES
(NO WIRE OUTSIDE OF BOX)****797 LOT, (2) ALLEN BRADLEY POWERFLEX 70 5
HP DRIVES
(NO WIRE OUTSIDE OF BOX)****798 IRVINGTON**

5-STATION GRADE STAMPER W/INK ROLLS &
GRADE MARK CRAYONS IN CONTROL ROOM

CIPP COLVILLE INDIAN PRECISION PINE - ONLINE ONLY 9/30/2020-10/7/2020

LOT #

**799 LOT, MARKED HEATER, INTERCOM & MONITOR
BY CONTROL
ROOM**

**800 APPROX 18'-23'H X 40'W X 120'L ALL
STEEL BOLT
TOGETHER BUILDING W/LIGHTS, INSULATION,
SPRINKLERS W/VALVE HOUSE (NO CONDUIT OR
WIRE, MACHINERY HAS PRIORITY OVER BUILDING)**

801 2003 TECO ENGINEERING

20-TRAY SORTER W/6'-20', 4"-18" & 3/4"-2" 110 LPM
CAPACITIES, 2-1/2' X 5-ARM TIPPLE GATE, APPROX
36' 5-STRAND 81X INFEED INCLINE TRANSFER, 6' 5"
6-STRAND TRANSITION BELT, APPROX 70'
5-STRAND DECLINE LOADING TRANSFER
W/LUMBER GATES & CYLINDERS, 20' TRAYS,
APPROX 75' AVERAGE LONG & 20' TRAYS APPROX
60' LONG W/(40) SEW 5 HP/1,600 RPM GEARHEAD
MOTORS, APPROX 35' 4-1/2" X 5-STRAND
HYDRAULIC OPERATED TIPPLE, MARKED
REMOTES, CATWALK & STAIRS

802 SEW

APPROX 50 HP DRIVE W/DRIVE CHAIN (DRIVE FOR
LOT 801)

**803 APPROX 21' 9-STRAND 81X INFEED TRANSFER
W/(9) 15'
EVEN END ROLLS, H-SHAFT, T-SPROCKETS,
MARKED SUPPORTS TO GROUND (NO DRIVE
MOTOR OR CATWALK)**

804 ALLEN BRADLEY 5000 SERIES

PLC W/(1) CONTROL NET, (3) DC INPUT & (4) RELAY
OUTPUT MODULES (NO WIRE OUTSIDE OF BOX)

**805 ALLEN BRADLEY CENTERLINE BULLETIN
2100**

5-SECTION MCC W/(43) SWITCHES (NO WIRE
OUTSIDE OF BOX)

LOT #**806 ALLEN BRADLEY 5000 SERIES**

PLC W/(1) CONTROL NET, (9) DC INPUT, (3) AC INPUT
& (3) RELAY OUTPUT MODULES (NO WIRE OUTSIDE
OF BOX)

**810 APPROX 34'-40'H X 40'W X 250'L ALL
STEEL BOLT**

TOGETHER SORTER BUILDING (NO NORTH END
BEAMS & NO WEST WALL TIN) W/APPROX 24'-28'H X
30'W X 52'L 3-SIDED ADDITION, LIGHTS,
INSULATION, SPRINKLERS & VALVE HOUSE (NO
CONDUIT OR WIRE, MACHINERY HAS PRIORITY
OVER BUILDING)

**811 20' HYDRAULIC OPERATED OVER END
STACKER**

W/SECONDARY STACKING RATCHET ARMS, 4-ARM
X 55" LUMBER LOWERING HOIST, (5) LUMBER
PLACING ARMS, 18' 2-SECTION 5 & 6-STRAND 81X
INFEED TRANSFER W/EVEN END CHAINS, PFS
HYDRAULIC UNIT W/(2) SIEMENS 40 HP MOTORS,
HEAT EXCHANGER, TANK HEATER,
SELF-CONTAINED, MARKED CATWALK, STAIRS &
SUPPORTS TO GROUND

812 ALLEN BRADLEY LOGIX 5555

PLC W/(1) ETHERNET/IP, (1) CONTROL NET, (1)
HYDRAULIC, (1) ANALOG INPUT, (4) DC INPUT, (1)
AC INPUT & (3) RELAY INPUT MODULES
W/INTERCOM (NO WIRE OUTSIDE OF BOX)

**813 ALLEN BRADLEY CENTERLINE BULLETIN
2100**

6-SECTION MCC W/(22) SWITCHES (NO WIRE
OUTSIDE OF BOX)

**814 APPROX 26' RE-ENTRY ROLLCASE W/(10)
58" ROLLS,
STEEL FRAME & SUPPORTS TO GROUND****815 APPROX 17' 4-STRAND 81X TRANSFER,
S-DRIVE, STEEL
RACES & SUPPORTS TO GROUND**

CIPP COLVILLE INDIAN PRECISION PINE - ONLINE ONLY 9/30/2020-10/7/2020

LOT #**816 SEW**

5 HP/55 RPM GEARHEAD DRIVE MOTOR W/DRIVE
CHAIN (DRIVE FOR LOT 814)

817 SEW

10 HP/47 RPM GEARHEAD DRIVE MOTOR W/DRIVE
CHAIN (DRIVE FOR LOT 815)

820 ACME F785769

STEEL BANDING STATION W/RAPZ 5/8" BANDING
HEAD, TOP & SIDE SQUEEZE, BUNK PLACER
MAGAZINE, INFEED & OUTFEED BUMP GATES, 25'
POWERED INFEED ROLLCASE W/(10) 8-1/2'X58"
ROLLS, 30' 2-STRAND 81X OUTFEED TRANSFER W/(4)
16' TRANSFER ROLLS, (2) GEARHEAD MOTORS,
CONTROLS & ELECTRICS W/ALLEN BRADLEY PLC
ON LANDING, MARKED CONTROLS
VIN / Serial: A419

821 FINAL TOUCH

AUTOMATED PAPER WRAP STATION W/(12) SIZE
SELECTIONS, POWERED FEED ROLLS, PAPER RACK
W/OVERHEAD STRUCTURE

822 APPROX 30' 2-STRAND 81X INFEED TRANSFER
W/(4) 16'
TRANSFER ROLLS, STEEL RACES, SUPPORTS TO
GROUND

823 APPROX 10' 4-STRAND H78 INFEED
TRANSFER, S-DRIVE,
STEEL RACES & SUPPORTS TO GROUND

824 APPROX 10' 4-STRAND H78 INFEED
TRANSFER FROM
RE-ENTRY, S-DRIVE, STEEL RACES & SUPPORTS TO
GROUND

825A SEW

5 HP/49 RPM GEARHEAD DRIVE MOTOR W/DRIVE
CHAIN (DRIVE FOR LOT 822)

LOT #**825B SEW**

3 HP/27 RPM GEARHEAD DRIVE MOTOR W/DRIVE
CHAIN (DRIVE FOR LOT 822)

826 SEW

10 HP/64 RPM GEARHEAD DRIVE MOTOR W/DRIVE
CHAIN (DRIVE FOR LOT 823)

827 SEW

10 HP/64 RPM GEARHEAD DRIVE MOTOR W/DRIVE
CHAIN (DRIVE FOR LOT 824)

**828 APPROX 33' 2-STRAND 81X OUTFEED
TRANSFER,**

S-DRIVE, STEEL RACES, SUPPORTS & STAIRS

829 APPROX 50' 2-STRAND 81X OUTFEED
TRANSFER W/(4)
15' TRANSFER ROLLS, S-DRIVE, STEEL RACES,
PLATE & SUPPORTS TO GROUND

**830 APPROX 21' 4-STRAND H78 OUTFEED
TRANSFER,**

S-DRIVE, STEEL RACES & SUPPORTS TO GROUND

831 SEW

3 HP/49 RPM GEARHEAD DRIVE MOTOR W/DRIVE
CHAIN (DRIVE FOR LOT 828)

832 SEW

10 HP/52 RPM GEARHEAD DRIVE MOTOR W/DRIVE
CHAIN (DRIVE FOR LOT 829)

833 SEW

10 HP/63 RPM GEARHEAD DRIVE MOTOR W/DRIVE
CHAIN (DRIVE FOR LOT 830)

CIPP COLVILLE INDIAN PRECISION PINE - ONLINE ONLY 9/30/2020-10/7/2020

LOT

834 FINAL TOUCH

SPARE 8-SELECTION AUTOMATED PAPER WRAP
MACHINE

835 COFFING

1/2-TON ELECTRIC CHAIN HOIST W/PENDANT
CONTROLS, APPROX 12' JIB ARM & TROLLEY

836 COFFING

1/2-TON ELECTRIC CHAIN HOIST W/PENDANT
CONTROLS, APPROX 16' BEAM & TROLLEY

**837 LOT, (2) MARKED HEATERS, FAN, CABINET
& INTERCOM
IN THIS AREA****838 SWEED STYLE**

SCRAP CHOPPER

**839 APPROX 18'-24'H X 36'W X 60'L 3-SIDED
BUILDING**

ADDITION W/LIGHTS, INSULATION & SPRINKLERS
(NO CONDUIT OR WIRE, MACHINERY HAS PRIORITY
OVER BUILDING)

**840 APPROX 26'-30'H X 72'W X 175'L ALL
STEEL BOLT
TOGETHER BUILDING W/APPROX 6" POLE
SUPPORTS (NO CONDUIT OR WIRE, MACHINERY
HAS PRIORITY OVER BUILDING)****841 PARTIAL PALLET OF DAYTON BAG &
BURLAP
SANDBAGS ON
THIS PALLET****842 PARTIAL PALLET OF DAYTON BAG &
BURLAP
SANDBAGS ON
THIS PALLET**

LOT

**843 PARTIAL PALLET OF DAYTON BAG &
BURLAP
SANDBAGS ON
THIS PALLET****844 PARTIAL PALLET OF DAYTON BAG &
BURLAP
SANDBAGS ON
THIS PALLET****845 PARTIAL PALLET OF DAYTON BAG &
BURLAP
SANDBAGS ON
THIS PALLET****846 LOT, (2,500) DAYTON BAG & BURLAP
SANDBAGS
ON THIS
PALLET****847 LOT, SAND IN THIS PILE****848 LOT, BANDING BUNKS W/STEEL RACK IN
THIS AREA
(BUYER RESPONSIBLE FOR LOADING)****849 LOT, BANDING BUNKS W/STEEL RACK IN
THIS AREA
(BUYER RESPONSIBLE FOR LOADING)****850 LOT, ASSORTED PICNIC BENCHES, WOOD
TABLES &
BENCHES****851 LOT, WHIRLWIND 212 LH CHOP SAW
W/BALDOR 15
HP/1,450 RPM MOTOR, IN & OUTFEED GRAVITY
ROLLS W/LUMBER STOPS, MARKED HORIZONTAL
AIR RECEIVER TANK & MARKED CABINETS IN THIS
AREA****852 LOT, MARKED ELECTRICS TO INCLUDE FPC
15 KVA
TRANSFORMER, 240/120V & (2) MARKED BREAKER
PANELS (NO WIRE OUTSIDE OF BOX)**

CIPP COLVILLE INDIAN PRECISION PINE - ONLINE ONLY 9/30/2020-10/7/2020

LOT #

**853 APPROX 36"X96" HYDRAULIC OPERATED
SCISSOR LIFT
W/5 HP MOTOR & ATTACHED ELECTRICS
(MODIFIED TO 48"X185" TOP)**

**854 LOT, MARKED ELECTRICS TO INCLUDE
ALLEN BRADLEY
5LC-5/01 PLC W/(4) MODULES & MARKED CONTROL
PANEL (NO WIRE OUTSIDE OF BOX)**

**855 APPROX 52' 5-STRAND 81XH TRANSFER,
S-DRIVE (DRIVE
MOTOR SOLD SEPARATELY) W/APPROX 16'
POWERED OUTFEED ROLLCASE W/(7) 55" ROLLS &
GEARHEAD DRIVE MOTOR, SUPPORTS TO FLOOR**

856 SKK

GEARHEAD DRIVE MOTOR (NO DATA) W/DRIVE
CHAIN (DRIVE FOR LOT 855)

**857 APPROX 50' POWERED ROLLCASE W/(19)
8"X58" ROLLS,
GEARHEAD DRIVE MOTOR & SUPPORTS TO FLOOR**

**858 20' OVER END MECHANICAL STACKER
W/5-ARM
X 52"
LUMBER LOWERING HOIST, (5) LUMBER PLACING
ARMS, INFEED TRANSFER W/EVEN END CHAIN, 18'
POWERED OUTFEED ROLLCASE W/(7) 8-1/2"X60"
ROLLS, GEARHEAD MOTOR, WESTERN 25 HP/1,500
PSI/26 GPM HYDRAULIC UNIT W/HE**

**859 APPROX 66' 4-STRAND 4" ROLL TOP & 81X
TRANSFER**

(TO STACKER) W/H-SHAFT, T-SPROCKETS,
SUPPORTS TO GROUND & SECTION OF WOOD
WALKWAY

**860 APPROX 36' 4-STRAND 4" ROLL TOP & H78
TRANSFER**

(TO STACKER) W/H-SHAFT, T-SPROCKETS,
SUPPORTS TO GROUND & SECTION OF WOOD
WALKWAY

LOT #

**861 APPROX 36' 4-STRAND 4" ROLL TOP & H78
TRANSFER**

(TO STACKER) W/H-SHAFT, T-SPROCKETS,
SUPPORTS TO GROUND & SECTION OF WOOD
WALKWAY

862 TOSHIBA

5 HP MOTOR TO SKK 20 RPM DOUBLE REDUCTION
REDUCER W/DRIVE CHAIN (DRIVE FOR LOT 859)

863 SKK

5 HP/20 RPM DOUBLE REDUCTION GEARHEAD
DRIVE MOTOR W/DRIVE CHAIN (DRIVE FOR LOT
860)

864 SKK

5 HP/20 RPM DOUBLE REDUCTION GEARHEAD
DRIVE MOTOR W/DRIVE CHAIN (DRIVE FOR LOT
861)

**865 APPROX 40' 6-STRAND C2060 TRANSFER
W/H-SHAFT,**

T-SPROCKETS & STEEL SUPPORTS

866 SEW

3 HP/60 RPM GEARHEAD DRIVE MOTOR W/DRIVE
CHAIN (DRIVE FOR LOT 865)

**867 ALLEN BRADLEY CENTERLINE BULLETIN
2100**

5-SECTION MCC W/(21) SWITCHES (NO WIRE
OUTSIDE OF BOX)

**868 LOT, CONTENTS OF THIS ROOM & MARKED
ELECTRICS ON
OUTSIDE WALL & ROOF (NO WIRE OUTSIDE OF
BOX)**

CIPP COLVILLE INDIAN PRECISION PINE - ONLINE ONLY 9/30/2020-10/7/2020

LOT #**869 LOT, CONTENTS OF THIS ROOM****870 LOT, STEEL RACK W/CONTENTS****871 LOT, PRINTED LUMBER WRAP****872 LOT, PRINTED LUMBER WRAP****873 LOT, RADIANT HEATER & INTERCOM
MOUNTED
ON BEAM****874 LOT, (15) APPROX 4-1/2'W X 18'L LUMBER
ROLL OUTS****875 LOT, (10) APPROX 4-1/2'W X 18'L LUMBER
ROLL OUTS****876 LOT, LOOSE CONTENTS OF LUNCHROOM
W/MARKED**ELECTRICS OUTSIDE OF WALL (NO WIRE OUTSIDE
OF BOX)**877 1978 QNW 350D**ROTARY SCREW COMPRESSOR W/100 HP MOTOR &
ATTACHED ELECTRICS (NO PIPING OUTSIDE OF
ROOM)
VIN / Serial: 780593**878 PNEUMATECH EE500**HEAT REGENERATIVE TWIN TOWER AIR DRYER,
500 SCFM @ 150 PSIG (NO PIPING OUTSIDE OF
ROOM)**879 2005 MANCHESTER**APPROX 30"X72" AIR RECEIVER, 200 PSIG (NO
PIPING OUTSIDE OF ROOM)**880 1991 QNW 10-C30F**HORIZONTAL TANK MOUNTED ROTARY SCREW AIR
COMPRESSOR W/30 HP MOTOR (NO PIPING OUTSIDE
OF ROOM)**LOT #**

VIN / Serial: 916055

881 1990 QNW 500D1ROTARY SCREW COMPRESSOR W/100 HP MOTOR
(NOT INSTALLED)
VIN / Serial: 900549**882 STEEL HOIST FRAME ON WHEELS, APPROX
8'X10'**

BETWEEN POSTS

**883 LOT, (3) POLY BARREL PALLETS, (2) ARE
UNDER**

PLANER

**884 HYDRAULIC UNIT FOR PLANER LOTS 685-687
W/40
HP &
10 HP MOTORS, (2) SEPARATE TANKS,
SELF-CONTAINED****885 INOVEC**AUXILIARY HYDRAULIC UNIT W/30 HP MOTOR,
HEAT EXCHANGER, TANK HEATER,
SELF-CONTAINED**886 SAS**HYDRAULIC UNIT FOR PLANER LOTS 715 & 716
W/(3) 50 HP & (1) 10 HP MOTORS, INLINE FILTERS,
HEAT EXCHANGER, TANK HEATER,
SELF-CONTAINED**887 AUXILIARY HYDRAULIC UNIT W/30 HP
MOTOR, HEAT
EXCHANGER, TANK HEATER****888 APPROX 24'-28'H X 80'W X 400'L ALL
STEEL BOLT
TOGETHER MAIN PLANER MILL BUILDING
W/APPROX 20'-24'H X 30'W X 400'L WEST SIDE
ADDITION & APPROX 28'W X 50'L ALL STEEL SOUTH
END ADDITION, INCLUDES ALL INTERIOR WOOD
STRUCTURES, LIGHTS, INSULATION & SPRINKLER**

CIPP COLVILLE INDIAN PRECISION PINE - ONLINE ONLY 9/30/2020-10/7/2020

LOT #	LOT #
SYSTEM (NO CONDUIT OR WIRE, MACHINERY HAS PRIORITY OVER BUILDING)	905 TOSHIBA
	20 HP/1,770 RPM MOTOR
889 TRUCK TARPING STATION W/GUIDE WIRES & LINE	906 TOSHIBA
	15 HP/3,500 RPM MOTOR
890 LOT, SMALL BUILDING W/ALL SCRAP IN THIS AREA (NO CONDUIT OR WIRE)	907A LOT, DAYTON 4C330 13-1/2" BLOWER W/TOSHIBA 10 HP/3,510 RPM MOTOR (UNUSED) W/APPROX 3-1/4"X1-3/4" PUMP W/BALDOR 20 HP/3,525 RPM MOTOR
891 STEEL LUMBER STACKING CART	
892 STEEL LUMBER STACKING CART	907B LOT, ASSORTED MOTORS ON THIS PALLET
893 STEEL STICKER/BUNK RACK	908 SKK
894 STEEL STICKER/BUNK RACK	3 HP DOUBLE REDUCTION GEARHEAD MOTOR
895 STEEL STICKER/BUNK RACK	909 SKK
896 STEEL STICKER/BUNK RACK	7-1/2 HP/37 RPM GEARHEAD MOTOR
897 LOT, BUNDLES OF 1-1/4"X3-1/4"X45" BANDING BUNKS (BUYER RESPONSIBLE FOR LOADING)	910 SM CYCLO
	5 HP/34.3 RPM GEARHEAD MOTOR
898 LOT, (5+/-) APPROX 3'X4'X6' BUNDLES OF 48" LATH (BUYER RESPONSIBLE FOR LOADING)	911A SEW
	UNKNOWN HP/189 RPM GEARHEAD MOTOR
901 WEG	911B SM CYCLO
300 HP/1,790 RPM, 460V, 586/7T FRAME AC MOTOR	43:1 RATIO REDUCER
902 TOSHIBA	912 CALZONI MR3000PINICIN-250PN
300 HP/1,785 RPM, 460V AC MOTOR	HYDRAULIC MOTOR
903 APPROX 300 HP MOTOR (NO DATA PLATE)	913 CALZONI REXROTH MR100N-250PN
	HYDRAULIC MOTOR
904 LINCOLN	
50 HP/1,180 RPM AC MOTOR TO GENCO 40 HP/1,180 RPM DC MOTOR GEN SET W/GE AMPHDYNE	

CIPP COLVILLE INDIAN PRECISION PINE - ONLINE ONLY 9/30/2020-10/7/2020

LOT #	LOT #
914 CALZONI MR450N2-250PN HYDRAULIC MOTOR	927 LOT, (3) REXNORD LINKBELT 4-15/16" BEARINGS ON THIS PALLET
915 LOT, ASSORTED HYDRAULIC MOTORS/PUMPS ON THIS PALLET	928 SAFTRONICS EMX3-0360C-V7-C1-H SOFT START, 160 KW, 400 VA
916 RADER 3100 SERIES 12"X30" HIGH PRESSURE CHIP FEEDER	929 EATON CUTLER HAMMER SAFETY SWITCH PANEL (UNUSED)
917 LOT, APPROX 110' OF 8"X15" BOX CHAIN (UNUSED)	930 EATON CUTLER HAMMER SAFETY SWITCH PANEL (UNUSED)
918 LOT, ASSORTED CHAIN ON THIS PALLET	931 SQUARE D 800 AMP MAIN, 480Y/277V
919 UNUSED W110 CHAIN SPROCKET	932 LOT (48) PACIFIC HOE/JONES & ORTH APPROX 3/8"X4"X21-1/2" CHIPPER LOT 520 KNIVES
920 LOT, ASSORTED SPROCKETS & SHEAVES ON THIS PALLET	933 LOT, CARRIAGE CABLE ON THIS REEL
921 LOT, ASSORTED SIZE BELTING ON THIS PALLET	934 LOT, CARRIAGE CABLE ON THIS REEL
922 LOT, ASSORTED SIZE BELTING ON THIS PALLET	935 LOT, CARRIAGE CABLE ON THIS REEL
923 LOT, ASSORTED SIZE BELTING ON THIS PALLET	936 LOT, ASSORTED FLAT STOCK UHMW ON THIS PALLET
924 LOT, ASSORTED LOT 213 NICHOLSON 27" DEBARKER PARTS ON THESE PALLETS	937 LOT, ASSORTED ROUND STOCK UHMW ON THIS PALLET
925 LOT, ASSORTED LOT 214 NICHOLSON 44" DEBARKER PARTS ON THIS PALLET	938 SPLINED ARBOR SHAFT
926 LOT, MDI 19"X41" METAL DETECTOR COIL & ASSORTED FIBERGLASS TUBS	939 LOT, (2) APPROX 6"X38" CHROME ROLLS ON THIS PALLET

CIPP COLVILLE INDIAN PRECISION PINE - ONLINE ONLY 9/30/2020-10/7/2020

LOT #	LOT #
940 LOT, 3/4"X.020" STEEL BANDING ON THIS PALLET	963 LOT, ASSORTED ITEMS ON THESE (4) PALLETS
941 LOT, 3/4"X.020" STEEL BANDING ON THIS PALLET	964 LOT, ASSORTED ITEMS ON THESE (4) PALLETS
942 LOT, SOUND BLANKETS ON THIS PALLET	965 LOT, ASSORTED ITEMS ON THESE (4) PALLETS
951 LOT, ASSORTED ITEMS ON THESE (4) PALLETS	966 LOT, ASSORTED ITEMS ON THESE (4) PALLETS
952 LOT, ASSORTED ITEMS ON THESE (4) PALLETS	967 LOT, ASSORTED ITEMS ON THESE (4) PALLETS
953 LOT, ASSORTED ITEMS ON THESE (4) PALLETS	968 LOT, ASSORTED ITEMS ON THESE (4) PALLETS
954 LOT, ASSORTED ITEMS ON THESE (4) PALLETS	969 LOT, ASSORTED ITEMS ON THESE (4) PALLETS
955 LOT, ASSORTED ITEMS ON THESE (4) PALLETS	970 LOT, ASSORTED ITEMS ON THESE (4) PALLETS
956 LOT, ASSORTED ITEMS ON THESE (4) PALLETS	971 APPROX 4'D X 20'W X 8'H WELDED STEEL PALLET RACK W/PARTIAL WOOD SHELF BOARDS
957 LOT, ASSORTED ITEMS ON THESE (4) PALLETS	972 LOT, STEEL RACK W/ASSORTED STEEL & PLASTIC CONDUIT & PIPING
958 LOT, ASSORTED ITEMS ON THESE (4) PALLETS	973 LOT, STEEL RACK W/ASSORTED STEEL & PLASTIC CONDUIT & PIPING
959 LOT, ASSORTED ITEMS ON THESE (4) PALLETS	974 LOT, ASSORTED STEEL RACKS
960 LOT, ASSORTED ITEMS ON THESE (4) PALLETS	975 LOT, ASSORTED MARKED SCRAP STEEL LOT W/MIXED SCRAP & APPLIANCE LOT BY OFFICE (NOT RESPONSIBLE FOR NON-RECYCLABLE ITEMS)
961 LOT, ASSORTED ITEMS ON THESE (4) PALLETS	
962 LOT, ASSORTED ITEMS ON THESE (4) PALLETS	

CIPP COLVILLE INDIAN PRECISION PINE - ONLINE ONLY 9/30/2020-10/7/2020

LOT #**976 LOT, LOOSE CONTENTS OF THIS ROOM****977 LOT, ASSORTED FURNITURE IN THIS AREA****978 LOT, ASSORTED FURNITURE IN THIS ROOM****979 LOT, ASSORTED FURNITURE IN THIS ROOM****980 LOT, ASSORTED FURNITURE IN THIS ROOM****981 LOT, ASSORTED FURNITURE IN THIS ROOM****982 LOT, ASSORTED FURNITURE IN THIS ROOM****983 LOT, ASSORTED OFFICE SUPPLIES,
DISHWASHER &
KITCHENWARE (NO ELECTRONICS)****985 LOT, LOOSE CONTENTS OF GUARD SHACK****986 LODGE & SHIPLEY**20" X APPROX 10' BED ENGINE LATHE W/APPROX
2-1/2" THRU HOLE, 21-1,182 RPM SPINDLE SPEEDS,
(6) 3 & 4-JAW CHUCKS, STEADY REST, TOOL POST &
TAIL STOCK (30 DAY REMOVAL PERIOD)**987 MONARCH**30-1/2"X96" ENGINE LATHE W/APPROX 2-1/4" THRU
HOLE, 8-405 RPM SPINDLE SPEEDS, (3) 3 & 4-JAW
CHUCKS, STEADY REST, TOOL POST & TAIL STOCK
VIN / Serial: 37155**988 2007 JET GH1660ZXCNC**16"X60" GEARED HEAD PRECISION LATHE (MILL
CLOSED IN 2009), 25-1,800 RPM, 3-JAW CHUCK,
STEADY REST, TOOL POST, TAIL STOCK W/MARKED
TOOLING & SHELF (30 DAY REMOVAL PERIOD)
VIN / Serial: 07016ZX1441**989 SOUTH BEND SPECIAL**APPROX 17"X17" ENGINE LATHE W/APPROX 1-1/2"
THRU HOLE, 3-JAW CHUCK, TOOL POST & TAIL
STOCK (30 DAY REMOVAL PERIOD)**LOT #****990 MORGON CBL940AG**APPROX 14"X36" GAP BED ENGINE LATHE
W/APPROX 1-1/2" THRU HOLE, 70-1,220 RPM SPINDLE
SPEEDS, 3-JAW CHUCK, TOOL POST & TAIL STOCK
(30 DAY REMOVAL PERIOD)
VIN / Serial: 864916**991 BRIDGEPORT SERIES II 3725007**CNC UNIVERSAL MILLING MACHINE, 4 HP HEAD,
11"X58" POWERED T-SLOT TABLE W/12"X35" T-SLOT
TABLE EXTENSION, SPINDLE & SLIDE INTERLOCK,
7,500 LBS (30 DAY REMOVAL PERIOD)
VIN / Serial: E/M 1577**992 CINCINNATI**OVERARM MILLING MACHINE, 18-1,045 RPM
SPINDLE SPEED, APPROX 15"X62" T-SLOT TABLE (30
DAY REMOVAL PERIOD)
VIN / Serial: 2**993 VARNAMO TYPE FV-3KM**UNIVERSAL MILLING MACHINE W/14"X64" T-SLOT
TABLE (30 DAY REMOVAL PERIOD)
VIN / Serial: 2605**994 KALAMAZOO**APPROX 48" HORIZONTAL METAL CUTTING
BANDSAW W/3/4"X10' 5" BLADE, 3/4 HP, 1,725 RPM,
115/230V, SINGLE PHASE (30 DAY REMOVAL
PERIOD)**995 JET HVBS-7MW**HORIZONTAL METAL CUTTING BANDSAW W/3/4
HP, 1,720 RPM, 115/230V, SINGLE PHASE (30 DAY
REMOVAL PERIOD)**996 JET JDP-20MF**20" SWING, 1" CAPACITY FLOOR DRILL PRESS,
T-SLOT TABLE & BASE, 1-1/2 HP, 1,750 RPM, 115/230V,
SINGLE PHASE (30 DAY REMOVAL PERIOD)
VIN / Serial: 5100782

CIPP COLVILLE INDIAN PRECISION PINE - ONLINE ONLY 9/30/2020-10/7/2020

LOT #**997 NS AUTO ARC/NAVY**

300 AMP AC/DC WELDER (30 DAY REMOVAL PERIOD)

998 AMERICAN INDUSTRIAL 100T-DA

100-TON, 5,000 PSI HYDRAULIC OPERATED SHOP PRESS, APPROX 36"X48" CAPACITY, 2 HP/1,725 RPM, 115/230V, SINGLE PHASE PUMP (30 DAY REMOVAL PERIOD)

999 2002 SPEEDAIRE

VERTICAL TANK MOUNTED COMPRESSOR W/5 HP/3,430 RPM, 208-230/460V, 3-PHASE MOTOR, TANK RATED AT 150 PSI, INLINE FILTER (NO PIPING, 30 DAY REMOVAL PERIOD)

1000 DOALL DBW-15

BANDSAW BLADE WELDER, 1,000 AMP, 480V W/BENCH (30 DAY REMOVAL PERIOD)

1001 DYNACORE TYPE II

HEAVY DUTY DOUBLE END PEDESTAL GRINDER, 2 HP/1,750 RPM, 220/440V, 3-PHASE (30 DAY REMOVAL PERIOD)

1002 HEALD

HEAVY DUTY SURFACE GRINDER W/14" ROTARY TABLE, 3-PHASE (30 DAY REMOVAL PERIOD)

1003 OSTER CATALOG NO. 502

PIPE THREADER W/NUMEROUS DIES (30 DAY REMOVAL PERIOD)
VIN / Serial: F02037

1004 LOT, ASSORTED MINUTE MAN ASSORTED SIZE

BROACHES &
KEYWAYS (30 DAY REMOVAL PERIOD)

LOT #

1005 LOT, CHUAN BRAND 11"-12", 10"-11", 9"-10", 8"-9" & 7"-8" MICROMETERS W/1"-11" STANDARDS (30 DAY REMOVAL PERIOD)

1006 APPROX 1" T X 43" W X 78" L STEEL TABLE W/MARKED

WOOD CABINET (30 DAY REMOVAL PERIOD)

1007 LOT, (2) PIECES OF HEAVY DUTY STEEL ROUND STOCK (30 DAY REMOVAL PERIOD)**1008 LOT, (2) 6" MACHINIST VISES**

(30 DAY REMOVAL PERIOD)

1009 LOT, (2) BORING HEADS

(30 DAY REMOVAL PERIOD)

1010 LOT, (2) ROTARY INDEXING HEADS

(30 DAY REMOVAL PERIOD)

1011 LOT, ASSORTED TOOL HOLDERS W/TOOLS

(30 DAY REMOVAL PERIOD)

1012 LOT, ASSORTED TOOL HOLDERS W/TOOLS

(30 DAY REMOVAL PERIOD)

1013 LOT, ASSORTED TOOL HOLDERS

(30 DAY REMOVAL PERIOD)

1014 LOT, ASSORTED TOOL HOLDERS

(30 DAY REMOVAL PERIOD)

1015 LOT, ASSORTED TOOL HOLDERS

(30 DAY REMOVAL PERIOD)

CIPP COLVILLE INDIAN PRECISION PINE - ONLINE ONLY 9/30/2020-10/7/2020

LOT #**1016 LOT, ASSORTED TOOL HOLDERS W/TOOLS**

(30 DAY REMOVAL PERIOD)

1017 CHALLENGE

6' ARCH STRAIGHT EDGE (30 DAY REMOVAL PERIOD)

1018 JET BGS8

BENCH GRINDER SANDER W/4" BELT SANDER & 8" WHEEL, 3/4 HP/1,725 RPM, 115/230V, SINGLE PHASE (30 DAY REMOVAL PERIOD)

1019 APPROX 1"X60"X65" STEEL TABLE W/6"

VISE (MUST WAIT UNTIL EMPTY TO REMOVE, 30 DAY REMOVAL PERIOD)

1020 LOT, ASSORTED TOOLING W/BENCH

(30 DAY REMOVAL PERIOD)

1021 LOT, WOOD CABINET W/CONTENTS

(30 DAY REMOVAL PERIOD)

1022 LOT, STEEL RACK W/ASSORTED ROUND STOCK

(30 DAY REMOVAL PERIOD)

1023 LOT, ASSORTED TOOLING ON THIS PALLET

(30 DAY REMOVAL PERIOD)

1024 LOT, ASSORTED TOOLING ON THIS PALLET

(30 DAY REMOVAL PERIOD)

1025 LOT, ASSORTED TOOLING W/MARKED BENCHES

(30 DAY REMOVAL PERIOD)

LOT #**1026 STANLEY VIDMAR**

LOT, 12-DRAWER CABINET W/ASSORTED TOOLING (30 DAY REMOVAL PERIOD)

1027 STANLEY VIDMAR

LOT, 12-DRAWER CABINET W/ASSORTED TOOLING (30 DAY REMOVAL PERIOD)

1028 STANLEY VIDMAR

LOT, 12-DRAWER CABINET W/ASSORTED TOOLING (30 DAY REMOVAL PERIOD)

1029 STANLEY VIDMAR

LOT, 12-DRAWER CABINET W/ASSORTED TOOLING (30 DAY REMOVAL PERIOD)

1030 STANLEY VIDMAR

LOT, 12-DRAWER CABINET W/ASSORTED TOOLING (30 DAY REMOVAL PERIOD)

1031 STANLEY VIDMAR

LOT, 10-DRAWER CABINET W/ASSORTED TOOLING (30 DAY REMOVAL PERIOD)

1032 EQUIPTO

LOT, 10-DRAWER CABINET W/ASSORTED TOOLING (30 DAY REMOVAL PERIOD)

1033 APPROX 20'-22'H X 40'W X 80'L ALL STEEL MACHINE

SHOP BUILDING W/(2) APPROX 12'X10' ROLL UP DOORS, INSULATED, LIGHTING, MARKED WOOD OFFICE & BATHROOM, HEATER, FAN & AIR LINES (NO CONDUIT OR WIRE, MACHINERY HAS PRIORITY OVER BUILDING. CANNOT START REMOVAL FOR 30 DAYS.)

1034 WEMCO

3-TON CAPACITY UNDERSLUNG BRIDGE CRANE, APPROX 30'X80' SPAN W/SHAW-BOX 3-TON

CIPP COLVILLE INDIAN PRECISION PINE - ONLINE ONLY 9/30/2020-10/7/2020

LOT #	LOT #
ELECTRIC CABLE HOIST W/POWER TRAVEL PENDANT CONTROLS (NO SUPPORTS. CANNOT START REMOVAL FOR 30 DAYS.)	
1035 LOT, MARKED ELECTRICS & WIRE TO WALL	1045 LOT, (3) FANS (30 DAY REMOVAL PERIOD)
1036 APPROX 8'X8'X8' STEEL PIPE CAGE W/DOOR & MARKED STEEL	1046 AA SHEET METAL FLAMMABLES CABINET, NFPA CODE 30 (30 DAY REMOVAL PERIOD)
1037 SCHUMACHER HD BATTERY CHARGER, 200 AMP ENGINE START, 40 AMP BOOST & 6-2 AMP CHARGE/MAINTAIN (BOUGHT NEW IN JULY 2020 BY THE JAMES G MURPHY CO, 30 DAY REMOVAL PERIOD)	1047 LOT, (2) SHOP VACS & (1) PRESSURE WASHER (30 DAY REMOVAL PERIOD)
1038 LOT, FUEL JUGS (BOUGHT NEW IN JULY 2020 BY THE JAMES G MURPHY CO, 30 DAY REMOVAL PERIOD)	1048 FOLDING 58" 4-PANEL WELDING CURTAIN W/SPARE FRAME (30 DAY REMOVAL PERIOD)
1039 VICTOR SINGLE HEAD PATTERN BURNER W/3'X8' CUTTING TABLE (30 DAY REMOVAL PERIOD)	1049 DEWALT DW871 14" CHOP SAW W/16"X58" INFEED & OUTFEED GRAVITY ROLLS (30 DAY REMOVAL PERIOD)
1040 BIG WHEEL TORCH CART (30 DAY REMOVAL PERIOD)	1050 JOHNSON APPROX 48" HORIZONTAL METAL CUTTING BANDSAW, 3-PHASE (30 DAY REMOVAL PERIOD)
1041 LARGE FIRE EXTINGUISHER ON CART (30 DAY REMOVAL PERIOD)	1051 JET JDP-17MG DRILL PRESS, 17" SWING, 5/8" CAPACITY, 3/4 HP/1,725 RPM, 115/230V, SINGLE PHASE (30 DAY REMOVAL PERIOD)
1042 NS AUTO ARC/US GOV'T 300 AMP AC/DC WELDER W/DISCONNECT & WIRE (30 DAY REMOVAL PERIOD)	1052 20" SWING DRILL PRESS W/1 HP/1,725 RPM, 115/230V, SINGLE PHASE (30 DAY REMOVAL PERIOD)
1043 LOT, WOOD CABINET W/CONTENTS (30 DAY REMOVAL PERIOD)	1053 BUFFALO FORGE 18" SWING DRILL PRESS, SINGLE PHASE (30 DAY REMOVAL PERIOD)
1044 LARGE HYDRAULIC PRESS W/36"X48" OPENING W/10 HP MOTOR, 3-PHASE, MARKED ELECTRICS (30 DAY REMOVAL PERIOD)	1054 CURTIS AIRE E50 5 HP HORIZONTAL TANK MOUNTED COMPRESSOR W/MARKED STARTER, 208-230/460V, 3-PHASE (NO PIPING, 30 DAY REMOVAL PERIOD)

CIPP COLVILLE INDIAN PRECISION PINE - ONLINE ONLY 9/30/2020-10/7/2020

LOT #**1055 LOT, ASSORTED SCRAP COPPER & ALUMINUM**

(30 DAY REMOVAL PERIOD)

1056 LOT, WOOD CABINET W/CONTENTS

(30 DAY REMOVAL PERIOD)

1057 LOT, ASSORTED FIRE EXTINGUISHERS IN CONTAINMENT

DRUM (30 DAY REMOVAL PERIOD)

1058 LOT, ASSORTED FIRE EXTINGUISHERS IN CONTAINMENT

DRUM (30 DAY REMOVAL PERIOD)

1059 LOT, ASSORTED FIRE EXTINGUISHERS IN THIS AREA

(30 DAY REMOVAL PERIOD)

1060 LOT, ASSORTED FIRE EXTINGUISHERS IN THIS AREA

(30 DAY REMOVAL PERIOD)

1061 EQUIPTO

10-DRAWER CABINET W/TOOLING & CONTENTS (30 DAY REMOVAL PERIOD)

1062 STANLEY VIDMAR

10-DRAWER CABINET (30 DAY REMOVAL PERIOD)

1063 LOT, RAG CANS

(30 DAY REMOVAL PERIOD)

1064 LOT, WOOD CABINET W/CONTENTS

(30 DAY REMOVAL PERIOD)

LOT #**1065 METALLIC BRAND**

APPROX 20'-22'H X 40'W X 75'L ALL STEEL MILLWRIGHTS SHOP BUILDING W/(2) 16'X24' ROLL UP DOORS, INSULATED, LIGHTING & ELECTRICS (NO CONDUIT OR WIRE, MACHINERY HAS PRIORITY OVER BUILDING, CANNOT START REMOVAL FOR 30 DAYS)

1066 LOT, (53) KILN CARTS & WHEELS (BUYER RESPONSIBLE

FOR LOADING)

1067 LOT, ASSORTED MARKED MACHINERY, PARTS & STEEL W/MARKED PLATE ALONG WALL**1068 LOT, REBAR, STRAPPING & PLATE IN THIS AREA****1069 LOT, ASSORTED STEEL PLATES TO 2-1/4" IN THIS AREA****1070 LOT, STEEL PLATES TO 1-1/4" IN THIS AREA****1071 LOT, STEEL PLATES TO 1-3/4" IN THIS AREA****1072 LOT, STEEL PLATES TO 1-1/2" IN THIS AREA****1073 LOT, ASSORTED I-BEAM, TUBE & MISC STEEL IN THIS AREA****1074 LOT, ASSORTED STEEL PIPING TO 12" DIA IN THIS AREA****1075 LOT, ASSORTED STEEL IN THIS AREA****1076 MAR**

10,000 LB BOLT TOGETHER TRAILER LOADER W/ATTACHED ELECTRICS

CIPP COLVILLE INDIAN PRECISION PINE - ONLINE ONLY 9/30/2020-10/7/2020

LOT #

1077 LOT, ASSORTED TIMBERS IN THIS AREA & TIMBERS BY PARTIAL SKIDDER & SORTER BUILDING (BUYER RESPONSIBLE FOR LOADING)

1078 LOT, LARGE QUANTITY OF APPROX 3/4"X1-1/2"X48"

BANDED STICKERS IN THIS AREA (BUYER RESPONSIBLE FOR LOADING)

1079 LOT, LARGE QUANTITY OF APPROX 3/4"X1-1/2"X48"

STICKERS ON STEEL RACKS, BANDED & LOOSE IN THIS AREA (BUYER RESPONSIBLE FOR LOADING)

1080 RICE LAKES

60-TON X 20 LBS LOAD CELL TRUCK SCALE
W/10'X70' CONCRETE DECK, CARDINAL 220 WEIGHT INDICATOR, DIGITAL READOUT, LOOSE CONTENTS OF SCALE HOUSE

1081 LOT, 8'X20' CONTAINER W/ASSORTED PUMPS, PARTS, LOG YARD HOSE, PIPE FITTINGS & ASSORTED ITEMS IN CONTAINER, ALUMINUM & PLASTIC SPRINKLER PIPING ON GROUND W/MARKED PUMP AT LOG SORT OFFICE (NOTE: ALUMINUM SPRINKLER PIPE IS MOSTLY SCRAP. THIS LOT INCLUDES ALL SCRAP METAL IN THIS AREA.)

1082 CAT 3306

DIESEL ENGINE FIRE PUMP SYSTEM W/VERTI-LINE 14RM1 1,500 GPM PUMP, PEERLESS 1,500 GPM/125 HP/1,775 RPM ELECTRIC PUMP, METRON FD2JRS FIRE PUMP CONTROLLER, APPROX 100 GALLON DIESEL TANK, APPROX 24'X25' METAL CLAD WOOD FRAMED BUILDING, ASSORTED METAL SIDING & PIPING IN THIS AREA (NO STEEL SUBSTRUCTURE IN POND OR CHAIN LINK FENCE)
VIN / Serial: 64Z11639

1083 LOT, 8'X20' CONTAINER W/CONTENTS & PIPING IN THIS AREA

LOT #

1084 LOT, (4) STEEL FRAME CONCRETE BASE LOG BUNKS
W/MARKED STEEL IN NORTH LOG YARD AREA & (2) SINGLE STEEL POST LOG BUNKS IN SOUTH LOG YARD BY CONCRETE BLOCKS (NO LOG YARD BUNKS BY LOT 1085, BUYER RESPONSIBLE FOR LOADING)

1085 LOT, ASSORTED STEEL IN THIS AREA
(LOCATED IN NORTH LOG YARD APPROX 100 YARDS FROM SAWMILL ALONG OMAK RIVERSIDE EASTSIDE RD)

1086 APPROX 8' DIA X 31-1/2'L SINGLE WALL DIESEL FUEL
TANK ON CRADLED FRAME W/PUMP & HOSE REELS

1087 APPROX 4' DIA X 6'L GAS TANK ON STAND W/TUTHILL

PUMP & PHOENIX FL6 KEYCARD STATION

1088 APPROX 13'-16'H X 24'D X 52'W ALL STEEL BOLT
TOGETHER BUILDING W/METAL ROOF (NO CONDUIT OR WIRE, MACHINERY HAS PRIORITY OVER BUILDING)

1089 LOT, (3) APPROX 4' DIA X 6'L OIL TANKS

W/PNEUMATIC HOSE REELS, SPEEDAIRE CAST IRON SERIES 5 HP TANK MOUNTED COMPRESSOR, 17.1 SCFM AT 150 PSI W/80 GALLON TANK, METAL CLAD STEEL FRAME BUILDING (NO CONDUIT OR WIRE)

1091 RETRACTA

PNEUMATIC OIL HOSE REEL (30 DAY REMOVAL PERIOD)

1092 RETRACTA

PNEUMATIC OIL HOSE REEL (30 DAY REMOVAL PERIOD)

CIPP COLVILLE INDIAN PRECISION PINE - ONLINE ONLY 9/30/2020-10/7/2020

LOT #	LOT #
1093 RETRACTA	1104 LOT, ASSORTED METAL 2-DOOR CABINET W/CONTENTS & MARKED WOOD SHELF (30 DAY REMOVAL PERIOD)
PNEUMATIC OIL HOSE REEL (30 DAY REMOVAL PERIOD)	
1094 LOT, WOOD CABINET W/CONTENTS	1105 VORTEC
(30 DAY REMOVAL PERIOD)	V6 GAS ENGINE (30 DAY REMOVAL PERIOD)
1095 LINCOLN	1106 DAYTON 5Z405
FILTER PRESS (30 DAY REMOVAL PERIOD)	TWIN CYLINDER AIR COMPRESSOR PUMP (UNUSED IN BOX, 30 DAY REMOVAL PERIOD)
1096 MILLER	1107 SHEPARD-THOMASON A080
300 AMP WELDER (30 DAY REMOVAL PERIOD)	PNEUMATIC RIVETER (30 DAY REMOVAL PERIOD)
1097 LOT, (2) STARTERS	1108 LOT, ASSORTED FILTERS ON MARKED SHELVES
(30 DAY REMOVAL PERIOD)	(30 DAY REMOVAL PERIOD)
1098 LOT, (2) STARTERS	1109 LOT, ASSORTED FILTERS ON MARKED SHELVES
(30 DAY REMOVAL PERIOD)	(30 DAY REMOVAL PERIOD)
1099 LOT, (3) STARTERS	1110 LOT, ASSORTED FILTERS ON MARKED SHELVES
(30 DAY REMOVAL PERIOD)	(30 DAY REMOVAL PERIOD)
1100 LOT, ASSORTED PARTS ON THESE SHELVES	1111 LOT, ASSORTED FILTERS ON MARKED SHELVES
(30 DAY REMOVAL PERIOD)	(30 DAY REMOVAL PERIOD)
1101 LOT, ASSORTED PARTS ON THESE SHELVES	1112 LOT, ASSORTED FILTERS ON TOP SHELF
(30 DAY REMOVAL PERIOD)	(30 DAY REMOVAL PERIOD)
1102 LOT, ASSORTED PARTS ON THESE SHELVES	1113 LOT, ASSORTED FILTERS ON THIS SHELF
(30 DAY REMOVAL PERIOD)	(30 DAY REMOVAL PERIOD)
1103 LOT, ASSORTED BELTS ON WALL	
(30 DAY REMOVAL PERIOD)	

CIPP COLVILLE INDIAN PRECISION PINE - ONLINE ONLY 9/30/2020-10/7/2020

LOT #**1114 LOT, ASSORTED PARTS ON THIS SHELF**

(30 DAY REMOVAL PERIOD)

1115 LOT, ASSORTED PARTS ON THIS SHELF

(30 DAY REMOVAL PERIOD)

1116 LOT, ASSORTED FILTERS ON THIS SHELF

(30 DAY REMOVAL PERIOD)

1117 LOT, ASSORTED PARTS ON THIS SHELF

(30 DAY REMOVAL PERIOD)

1118 LOT, ASSORTED PARTS ON THIS SHELF

(30 DAY REMOVAL PERIOD)

1119 LOT, ASSORTED PARTS ON THIS SHELF

(30 DAY REMOVAL PERIOD)

1120 LOT, ASSORTED PARTS ON THESE SHELVES

(30 DAY REMOVAL PERIOD)

1121 LOT, ASSORTED PARTS ON THESE SHELVES

(30 DAY REMOVAL PERIOD)

1122 LOT, ASSORTED PARTS ON THESE SHELVES

(30 DAY REMOVAL PERIOD)

1123 LOT, ASSORTED PARTS ON THESE SHELVES

(30 DAY REMOVAL PERIOD)

1124 LOT, ASSORTED PARTS ON THESE SHELVES

(30 DAY REMOVAL PERIOD)

LOT #**1125 METALLIC BRAND**

APPROX 30'-32'H X 70'W X 50'L ALL STEEL BOLT TOGETHER MECHANICS SHOP BUILDING W/(2) 18'X24' POWERED ROLL UP DOORS, (1) 16'X24' MANUAL ROLL UP DOOR, APPROX 8'X20' ADDITION, AAON FILTER UNIT W/EXHAUST FAN & (2) DROP HOSES, LIGHTING & ELECTRICS, INSULATED, BATHROOM, OFFICE & LANDING (NO CONDUIT OR WIRE, MACHINERY HAS PRIORITY OVER BUILDING. PLEASE CONSULT AUCTION SITE REP PRIOR TO BIDDING. CANNOT START REMOVAL FOR 30 DAYS)

1126 WEMCO

APPROX 24'L X 60'W 5-TON UNDERSLUNG BRIDGE CRANE W/STAHL 5-TON CABLE HOIST, POWER TRAVEL, PENDANT CONTROL (NO UPRIGHT SUPPORTS, CANNOT START REMOVAL FOR 30 DAYS)

1127 MANN

9' BRUSH RAKE (APPROX 100 FT FROM NE CORNER OF SAWMILL BUILDING)

1128 GAFFNER

HYDRA LOADER/SKIDDER W/6' PUSH BLADE, DIESEL ENGINE (PARTS MACHINE)

1130 LOT, (5) TRAILER LOG BUNKS (BUYER RESPONSIBLE FOR LOADING)**1131 TOYO**

26.5-25 TIRE

1132 TITAN

LOT, (2) 18.4-28 TIRES

1133 TOYO

14.00-24 TIRE W/10-HOLE RIM

CIPP COLVILLE INDIAN PRECISION PINE - ONLINE ONLY 9/30/2020-10/7/2020

LOT #	LOT #
1134 BF GOODRICH	1143 GAFFNER 4500
18.4-16A TIRE	IRON MULE/SKIDDER W/6' PUSH BLADE, DIESEL ENGINE (DOES NOT RUN) VIN / Serial: A800102B
1135 FIRESTONE	1145 CASE 580C
A LOT, (2) 14-17.5 TIRES W/5-HOLE RIMS	LOADER BACKHOE, 70 HP, SHUTTLE SHIFT, 82" FRONT BUCKET, 12" BACKHOE BUCKET, OROPS, HOUR METER READS: 2,866 VIN / Serial: 898701
1135BSOLIDEAL	1147 LOT, MARKED STEEL BUNKS & ASSORTED STEEL IN SOUTH YARD AREA (BUYER RESPONSIBLE FOR LOADING)
LOT, (2) 9.00-20 TIRES W/8-HOLE RIMS	1148 LOT, MARKED WOOD TIMBERS & ASSORTED WOOD IN SOUTH YARD AREA (BUYER RESPONSIBLE FOR LOADING)
1136 ANVIL	1200 2002 UNITEC 146090-10LPC
A LOT, (4) 10.00-20 TIRES W/10-HOLE RIMS	100-TON X 20 LB LOW PROFILE ABOVE GROUND LOAD CELL PLATFORM SCALE, 10'X70' 3-SECTION CONCRETE DECK VIN / Serial: 7302
1136BANVIL	1201 CUSTOM BUILT 10,000 LB TRAILER LOADER W/ATTACHED ELECTRICS
LOT, (4) 10.00-20 TIRES	1202 LOT, (2) ALL STEEL LOG BUNKS, APPROX 90"W X 84"H BETWEEN ARMS X APPROX 112"W X 120"H OVERALL (BUYER RESPONSIBLE FOR LOADING)
1137 SOLIDEAL	1203 LOT, (2) ALL STEEL LOG BUNKS, APPROX 90"W X 84"H BETWEEN ARMS X APPROX 112"W X 120"H OVERALL (BUYER RESPONSIBLE FOR LOADING)
A LOT, (4) 10.00-20 TIRES W/10-HOLE RIMS	
1137BBF GOODRICH	
LOT, (4) 11.00-22 TIRES W/CUT OUT RIMS	
1138 FIRESTONE	
A LOT, (2) 11.00-22 TIRES W/CUT OUT RIMS	
1138BLOT, (3) 9.00-20 TIRES W/8-HOLE RIMS	
1139 MILESTAR	
A LOT, (2) 9.00-20 TIRES	
1139BLOT, (4) ASSORTED TIRES	
1140 LOT, (2) ASSORTED RIMS	
A	
1140B APPROX 21-1/2" DIA 30-HOLE RIM	

CIPP COLVILLE INDIAN PRECISION PINE - ONLINE ONLY 9/30/2020-10/7/2020

LOT #

1204 LOT, (2) ALL STEEL LOG BUNKS, APPROX
90"W
X 84"H
BETWEEN ARMS X APPROX 112"W X 120"H
OVERALL (BUYER RESPONSIBLE FOR LOADING)

1205 LOT, (2) ALL STEEL LOG BUNKS, APPROX
90"W
X 84"H
BETWEEN ARMS X APPROX 112"W X 120"H
OVERALL (BUYER RESPONSIBLE FOR LOADING)

1206 LOT, (2) ALL STEEL LOG BUNKS, APPROX
90"W
X 84"H
BETWEEN ARMS X APPROX 112"W X 120"H
OVERALL (BUYER RESPONSIBLE FOR LOADING)

1207 LOT, (2) ALL STEEL LOG BUNKS, APPROX
90"W
X 84"H
BETWEEN ARMS X APPROX 112"W X 120"H
OVERALL (BUYER RESPONSIBLE FOR LOADING)

1208 LOT, (2) ALL STEEL LOG BUNKS, APPROX
90"W
X 84"H
BETWEEN ARMS X APPROX 112"W X 120"H
OVERALL (BUYER RESPONSIBLE FOR LOADING)

1209 LOT, (2) ALL STEEL LOG BUNKS, APPROX
90"W
X 84"H
BETWEEN ARMS X APPROX 112"W X 120"H
OVERALL (BUYER RESPONSIBLE FOR LOADING)

1210 LOT, (2) ALL STEEL LOG BUNKS, APPROX
90"W
X 84"H
BETWEEN ARMS X APPROX 112"W X 120"H
OVERALL (BUYER RESPONSIBLE FOR LOADING)

1291 HYSTER 80

FORKLIFT, PROPANE (NO PROPANE TANK), 2-STAGE
MAST, 48" FORKS, SOLID TIRES, HOUR METER
READS: 6,333 (NOT RUNNING, NO DATA PLATE)

LOT #**1292 1985 QNW 100-B/S**

ROTARY SCREW COMPRESSOR W/200 HP MOTOR,
AIR COOLED, ATTACHED STARTER, SQUARE D
DISCONNECT, HOUR METER READS: 11,532
VIN / Serial: 850632

1293 LOT, REMAINING LOOSE CONTENTS OF
MECHANICS SHOP
(NO FORKLIFT, COMPRESSOR OR CAT D8)

1294 1964 CAT D8

CRAWLER TRACTOR W/10' U-BLADE, CAT D342
6-CYL DIESEL ENGINE, ATECO 2-BARREL RIPPER
(MECHANICAL ISSUES)

1295 BRIDGEPORT SERIES I

2 HP UNIVERSAL MILLING MACHINE, 500-4,200 RPM
SPINDLE SPEED, 9"X42" POWER T-SLOT TABLE
VIN / Serial: 2J7399-2

1296 SHELDON

12" SHAPER
VIN / Serial: 8-8987

1297 WILTON TYPE 24504

24" SWING MILL DRILL, 85-1,460 RPM SPINDLE
SPEEDS, 1-1/3 HP/440V, 3-PHASE

1298 OSTER

PIPE THREADER ON WHEELS

1299 MAZAK

APPROX 18"X80" ENGINE LATHE W/APPROX 3"
THRU HOLE, 25-1,500 RPM SPINDLE SPEEDS, 3-JAW
CHUCK, TOOL POST, TAIL STOCK, STEADY REST,
HARDENED & GROUND BED WAY

1300 BIGNALL-KEELER NO. 6.B

DUPLEX IMPROVED MACHINE, 1-1/2"-6" PIPE
THREADER

CIPP COLVILLE INDIAN PRECISION PINE - ONLINE ONLY 9/30/2020-10/7/2020

LOT #

VIN / Serial: 6196

1301 VICTOR 1640

16"X40" ENGINE LATHE W/APPROX 2-1/4" THRU
HOLE, 120-1,800 RPM SPINDLE SPEEDS, 3-JAW
CHUCK, TOOL POST & TAIL STOCK, GROUND &
HARDENED BED
VIN / Serial: 561824

1302 SCOTCHMAN 4014C

IRON WORKER, 40-TON CAPACITY, 6" THROAT
DEPTH, 1-1/4" THRU HOLE, 3/8" MILD STEEL, 14"
FLAT BAR SHEAR LENGTH, (7) DIES
VIN / Serial: 210201285

**1303 APPROX 14" HEAVY DUTY METAL CUT OFF
SAW W/15
HP/1,720 RPM, 208-230/460V, 3-PHASE**

**1304 LOT, LARGE QUANTITY OF ANGLE, FLAT,
CHANNEL &
SQUARE STOCK W/RACK**

1305 MARSHALL & HUSCHART

22" SWING BELT DRIVE DRILL PRESS, 3-PHASE

1306 KALAMAZOO

APPROX 48" HORIZONTAL METAL CUTTING
BANDSAW

1307 APPROX 64" PYRAMID ROLLS

1308 KAESER

LOT, TWIN TOWER DRYER, APPROX 1,000 SCFM, 150
PSIG W/AAON FILTER UNIT
VIN / Serial: 3344-1-9511-8KD

1309 LOT, MARKED STEEL TO 3-1/2" THICK

(30 DAY REMOVAL PERIOD)
