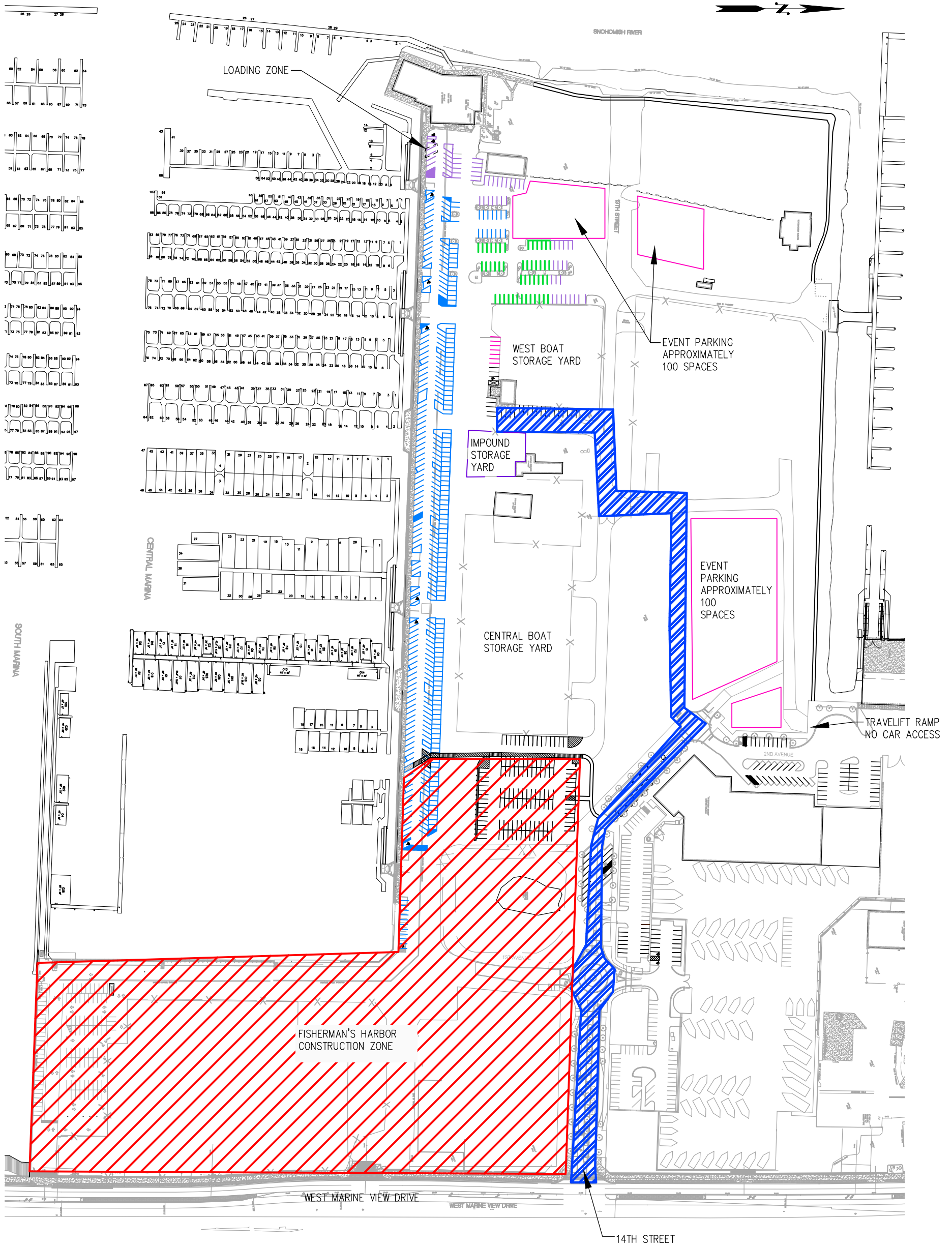


# VESSEL AUCTION PREVIEW: TUES 5/9 (2-4PM) & WED 5/10 (9-11AM)



## LEGEND:

- PROPOSED EVENT PARKING
- EXISTING WEEKDAY WORKERS/  
WEEKEND EVENT PARKING
- EXISTING PARKING (NOT EVENT)
- MARINA PERMIT PARKING
- GENERAL MARINA (12-HR PARKING)
- PREFERRED PERMIT PARKING
- CONSTRUCTION ZONE
- TRAFFIC ROUTE
- IMPOUND STORAGE YARD

## CENTRAL PIER BASEMAP

SCALE: 1" = 200'