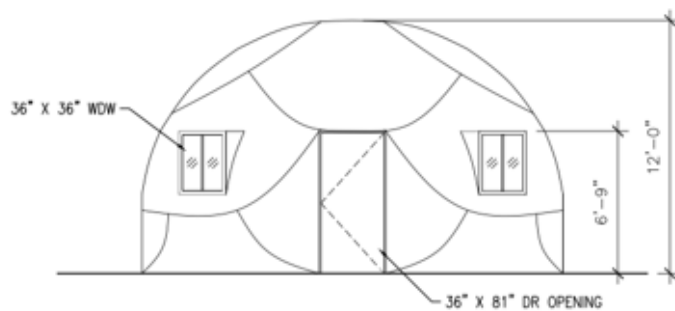


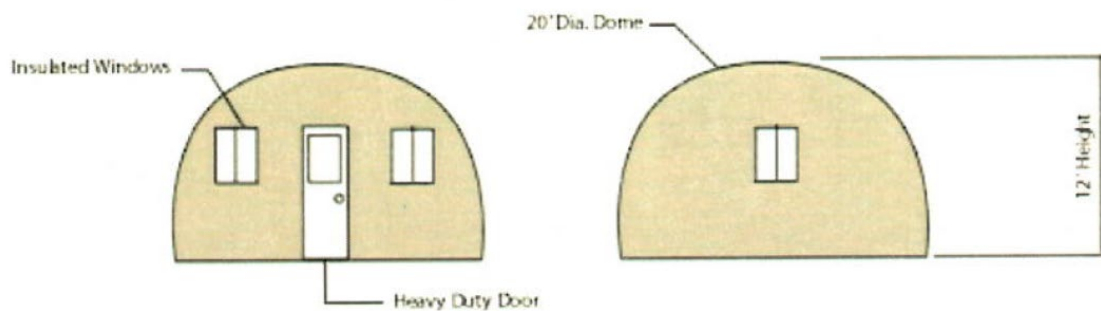
Dome Technical & Dimensions Specification

Floor Space	314 sq.ft.
Door Opening	36" x 81"
Interior Ceiling Height	12` at the Centre
Fire rating	Class 1A
Weight	1100 lbs
Crate	51"L x 90"W x 54"H
Weight with Crate	2200 lbs
Wind Speed	Category 5 Hurricane winds over 180 mph
Snow Load	30` +
Temperature Range	-70° below to +120° above



TYP DOME ELEVATION

1/4"=1'-0"



- No internal frame is required. The entire structure is self-supporting once assembled.
- Each Dome is formed of 21 pieces.
- The only tools required are 2 ratchets or wrenches
- The panels are light-weight.
- The Dome can be assembled by 2-3 persons.
- Assembly time is between 2-3 hours because of the repetition and small number of panels.
- Each piece is formed into a compound curve to add structural strength and integrity.









21 Panels total
per dome

