

PUBLIC ONLINE AUCTION



LAURELWOOD BREWING CO.

Brewery Equipment - Closing Portland Location

Start Date: 10AM | Thursday - June 13

End Date: 10AM | Thursday - June 20

Preview: 8AM to 4PM | Wednesday - June 19

Location: 5115 NE Sandy Blvd, Portland, OR 97213



2010 BAVARIAN F45
45 BARREL S/S JACKETED FERMENTATION TANK



DME
APPROX. 18 BARREL 3-VESSEL BREWHOUSE



AGILE
32 BARREL S/S HLT



(1 OF 3)
2006 INTERIOR STAINLESS
40 BARREL S/S SINGLE WALL BRITE TANK



NO MINIMUMS - NO RESERVES

BREWHOUSE:

DME APPROX. 18 BARREL 3-VESSEL BREWHOUSE, 15 BARREL MASH TUN W/AGITATOR, 2014 DME 20 BARREL KETTLE, 20 BARREL WHIRLPOOL, MUELLER HEAT EXCHANGER, (2) TRANSFER PUMPS, HOP BACK, CATWALK, CONTROLS, HOSES & ACCESSORIES

FERMENTATION TANKS:

2010 BAVARIAN F45 45 BARREL S/S JACKETED FERMENTATION TANK, FRONT GATE, PROBE, GAUGES, VALVES, S/N: 0622
(2) 2003 BAVARIAN F15 15 BARREL S/S JACKETED FERMENTATION TANKS, FRONT GATE, PROBE, GAUGES, VALVES, S/N: 0260 & 0259
(2) DME 15 BARREL S/S JACKETED FERMENTATION TANKS, FRONT GATE, PROBE, GAUGES, VALVES
(2) 2006 BAVARIAN F30 30 BARREL S/S JACKETED FERMENTATION TANKS, FRONT GATE, PROBE, GAUGES, VALVES, S/N: 0451 & 0450
METALCRAFT 30 BARREL S/S JACKETED FERMENTATION TANK, FRONT GATE, PROBE, GAUGES, VALVES
2009 BAVARIAN F30 30 BARREL S/S JACKETED FERMENTATION TANK, FRONT GATE, PROBE, GAUGES, VALVES, S/N: 0566

BRITE TANKS:

(2) METALCRAFT 50 BARREL S/S JACKETED BRITE TANKS, FRONT GATE, GAUGES, VALVES
(3) 2006 INTERIOR STAINLESS 40 BARREL S/S SINGLE WALL BRITE TANKS, FRONT GATE, GAUGES, VALVES
 40 BARREL S/S SINGLE WALL BRITE TANK, FRONT GATE, PROBES, GAUGES
(3) DME 16 BARREL S/S SINGLE WALL BRITE TANKS, FRONT GATE, PROBES, GAUGES
2004 INTERIOR STAINLESS 15 BARREL S/S SINGLE WALL BRITE TANK, FRONT GATE, PROBES, GAUGES
(2) 2003 INTERIOR STAINLESS 15 BARREL S/S SINGLE WALL BRITE TANKS, FRONT GATE, PROBES, GAUGES

RESTAURANT & BAR EQUIPMENT:

PERLICK C5065EUL 8' 4-DOOR S/S KEG COOLER W/DOUBLE TAP, 3-TAP & 4 TAP BEER TOWERS MOUNTED ON COUNTER, 115V
 (2) 12-TAP & (1) 8-TAP S/S BEER TOWERS

KROWNE 18" & 12" STAND ALONE BAR HAND SINKS
KROWNE 36", 30" & 24" BAR ICE BINS
KROWNE 48", 36" & 24" BAR DRAIN BOARDS
(2) ATOSA MSF8304 73" 3-DOOR REFRIGERATED S/S PREP TABLES ON CASTERS, 115V
ATOSA MSF83066R 48" 2-DOOR REFRIGERATED PREP TABLES ON CASTERS, 115V
TURBO-AIR MST-28 28" SINGLE-DOOR REFRIGERATED PREP TABLE ON CASTERS, 115V
ATOSA 48" 2-DRAWER REFRIGERATED CHEF BASE ON CASTERS, 115V
BEVERAGE-AIR WTR27A-09 27" SINGLE DOOR UNDERCOUNTER S/S REFRIGERATOR ON CASTERS, 115V
ATOSA MBF8001 29" SINGLE-DOOR S/S FREEZER ON CASTERS, 115V
BEVERAGE-AIR WCF 27" SINGLE DOOR UNDERCOUNTER S/S FREEZER ON CASTERS, 115V
CLEVELAND KET-RT 12-GALLON COUNTERTOP ELECTRIC TILTING 2/3 STEAM JACKETED KETTLE W/STAND, 208-240V, SINGLE PHASE
HOBART D-300 30 QT MIXER, 1/2 HP, 115V
SUNFIRE 40" 2-DOOR DOUBLE STACKED ELECTRIC GAS CONVECTION OVEN, 220V, SINGLE PHASE
WOLF 36" 6-BURNER GAS RANGE W/SINGLE-DOOR OVEN
WOLF 36" WALL MOUNTED GAS SALAMANDER
 ASSORTED PITCO & DEAN 15-1/2" GAS DEEP FRYERS
RADIANCE 48" COUNTERTOP 8-BURNER GAS CHAR BROILER
WOLF 48" COUNTERTOP 4-BURNER GAS GRILL
SHARP 1000 W/R-2ILV COMMERCIAL MICROWAVE, 120V
HOBART 1612 12" MANUAL SLICER, 115V
ROBOT COUPE R101 2.5 QT COMMERCIAL FOOD PROCESSOR, 120V
(2) CURTIS COFFEE BREWERS, 120V
 APPROX. 8'4" X 8'8" L-SHAPED DIRTY DISH TABLE W/RINSE SINK & 7' CLEAN DISH TABLE
 LARGE SELECTION OF S/S INSERTS, POTS, PANS, KITCHEN UTENSILS, PLATES, BAKING SHEETS, PORTION CONTAINERS, GLASSWARE
 TOAST POS SYSTEM W/(2) SLIP PRINTERS, (2) CASH DRAWERS,
 (2) MONITORS & (6) PORTABLE SERVER TERMINALS
CHAR-GRILLER GAS BBQ SMOKER
 (30) PADDED BAR STOOLS, (50) TEACHER STYLE WOOD CHAIRS,
 (8) METAL BAR STOOLS, (7) 32" DIA. WOOD TOP BUDDY BARS, WOOD TOP DINING TABLES, OUTDOOR FURNITURE, (6) 6' WOOD PICNIC TABLES, 90" 3-COMPARTMENT S/S SINK, 9' SHUFFLE BOARD, PADDED BOOTH SECTIONS, 44" ELECTRIC WARMING TABLE



2003 BARVARIAN F15



2003 BARVARIAN F15



DME



DME



2006 BARVARIAN F30



2006 BARVARIAN F30



METALCRAFT



2009 BARVARIAN F30

PUBLIC ONLINE AUCTION

ROLLING STOCK:

2004 FREIGHTLINER SPRINTER 2500 CARGO VAN, DIESEL, AUTO, ODOMETER READS: 262,648, S/N: WD2PD643945597490
2004 GMC 16' S/A BOX VAN, DIESEL, AUTO, LIFT GATE, ODOMETER READS: 202,804, S/N: J8DC4B14847000872
NISSAN 1N1L15V 2,700 LB CAP. 3-WHEEL ELECTRIC FORKLIFT, 187" 3-STAGE MAST, SIDE SHIFT, CHARGER, HOUR METER READS: 4,432, S/N: 1N1-725193

PUMPS:

(32) FLOJET H5610000 BEER PUMPS
CPE MQSP-304T-56 PORTABLE TRANSFER PUMP, VSD

MISC. EQUIPMENT:

2006 PREMIER KGW-SA-2V-CS 3-HEAD KEG WASHER, S/N: 0625-LBC
AJAX HNG700 700,000 BTU NATURAL GAS LOW PRESSURE STEAM BOILER, S/N: 51091
(2) MAXI-VAC JS350 PLUS LINE CLEANERS
AGILE 32 BARREL S/S HLT, TOP GATE, VALVES, PUMP
1999 DELLA TOFFOLA A4 400X400 PORTABLE FILTER PRESS, S/N: 110840
6-VESSEL TEMP CONTROL PANEL
PRO REFRIGERATION GLYCOL CHILLER (ROOF MOUNTED)
RAD 300 3 HP GRAIN MILL WITH S/S GRIST CASE ON LOAD CELLS, CABLEVEY CHAIN TRANSFER CONVEYOR
(2) RINNAI RUC98I NATURAL GAS 199,000 BTU ON DEMAND WATER HEATERS
2016 THERMALINE T13 S-36 HEAT EXCHANGER, S/N: 18994-01
(2) ALL AMERICAN CAN SEAMER CRAWLER MACHINES
(200) S/S 1/2 BARREL KEGS, (200) S/S 1/6 BARREL KEGS, (47) S/S 1/4 BARREL KEGS, (2) S/S SINKS, S/S TABLES, PLATFORM SCALE, FITTINGS, CLAMPS, LADDERS, HAND TRUCKS, PALLET JACKS, HOSES & ASSORTED BREWING SUPPLIES, PORTABLE TRANSFER PUMP, AND MUCH MORE!



SCAN THE QR CODE TO CHECK OUT THE FULL PREVIEW! →



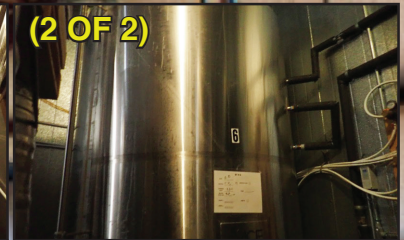
1999 DELTA TOFFOLA A4



6-VESSEL TEMP CONTROL PANEL



METALCRAFT



METALCRAFT



2006 INTERIOR STAINLESS



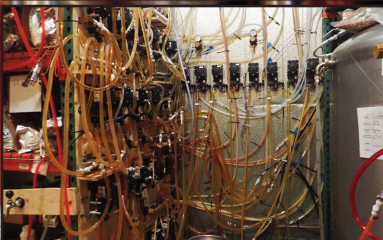
2006 INTERIOR STAINLESS



RAD 300



2016 THERMALINE T13 S-36



(32) FLOJET H5610000



PERLICK C5065EUL



(2) ALL AMERICAN



ASSORTED BARREL KEGS

TERMS & CONDITIONS

13% BUYERS PREMIUM ON ALL PURCHASES

PAYMENT: FULL PAYMENT MUST BE MADE BY 5:00 PM THURSDAY, JUNE 20TH.

REMOVAL: ALL ITEMS MUST BE REMOVED NO LATER THAN 4:00 PM THURSDAY, JUNE 27TH.

REMOVAL HOURS: 8:00 AM – 4:00 PM JUNE 21ST THRU JUNE 27TH.

NO SHIPPING & NO WEEKEND REMOVAL.

WARRANTY DISCLAIMER: ALL SALES ARE FINAL. ALL ITEMS ARE BEING SOLD

"AS IS, WHERE IS," WITH ALL FAULTS AND WITHOUT

ANY WARRANTIES AS TO MERCHANTABILITY. COMPLETE TERMS AND CONDITIONS OF SALE WILL BE AVAILABLE AT THE TIME OF SALE.

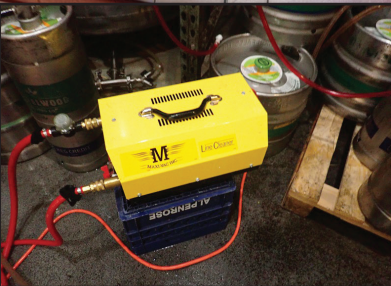
PLEASE SEE AUCTION CATALOG FOR COMPLETE TERMS AND CONDITIONS



1.800.426.3008 - 425.486.1246 - murphyauction.com



40 BARREL S/S BRITE TANK



(2) MAXI-VAC JS350 PLUS



CPE MQSP-304T-56



PRO REFRIGERATION



NISSAN 1N1L15V



James G. Murphy Co.
Commercial & Industrial Auctioneers
P.O. Box 1127, Marysville, WA 98270

PRESORTED
FIRST CLASS MAIL
U.S. POSTAGE
PAID
SEATTLE, WA
PERMIT NO. 963



**REGISTER
TO BID @
MURPHYAUCTION.COM**

PUBLIC ONLINE AUCTION LAURELWOOD BREWING CO.

Brewery Equipment - Closing Portland Location

Start Date: 10AM | Thursday - June 13

End Date: 10AM | Thursday - June 20

Preview: 8AM to 4PM | Wednesday, June 19

Location: 5115 NE Sandy Blvd, Portland, OR 97213



2004 FREIGHTLINER SPRINTER 2500

NO MINIMUMS - NO RESERVES



ATOSA MBF8001



2006 PREMIER KGW-SA-2V-CS



(2) RINNAI RUC981



(2) ATOSA MSF8304

FOR MORE INFORMATION GO TO MURPHYAUCTION.COM • PHONE 425.486.1246