



NO MINIMUMS - NO RESERVES ONLINE AUCTION



KELTECH - ONLINE ONLY

Acrylic & Printing Shop Equipment

Start Date: 11:00 AM | Thursday - January 30

End Date: 11:00 AM | Thursday - February 6

Preview 8:00 AM to 4:00 PM | Wednesday, February 5

Location: 3510 S. Pine St., Tacoma, WA 98409

ONLINE BIDDING AVAILABLE AT MURPHYAUCTION.COM



2017 VANGUARD VK300D



2013 MULTICAM SERIES 2000



1995 KOMO VR804TT



2011 ESKO KONGSBERG MULTICUT IXL24



NO MINIMUM - NO RESERVE AUCTION



2017 VANGUARD VK300D FLATBED, LED UV PRINTER, 5'X10' VACUUM TABLE, (6) CHAMBERS, 6-HEAD CONTROLS, S/N: 38640

2011 FUJI ACUITY ADVANCE HS-WIO UV FLATBED PRINTER, 4'X8' VACUUM TABLE, 5-COLOR, CONTROLS, S/N: 2909111

2015 FUJI ACUITY LED 1600 64" WIDE FORMAT PRINTER, 8-COLOR (NEEDS MINOR WORK), S/N: L459B768

2014 EPSON SURE COLOR S70670 64" WIDE FORMAT PRINTER, 10-COLOR, S/N: QMJE000426

2014 HP LATEX 360 64" WIDE FORMAT PRINTER, 7-COLOR, S/N: MY4AA3900J

2012 HP DESIGNJET L26500 60" WIDE FORMAT PRINTER, 6-COLOR, S/N: MY22P1901B

2008 MIMAKI CG-160FX II 74" CUTTING PLOTTER, S/N: G8809502

2013 MULTICAM SERIES 2000 LASER CNC LASER, 400 WATT LASER, 5'X10' TABLE, DIMPLEX KOOLANT KOOLERS CHILLER, DUST/FUME EXTRACTOR, CONTROLS, S/N: 2-204-L-0400W10059

2011 ESKO KONGSBERG MULTICUT IXL24 CNC ROUTER/CUTTING TABLE, 68"X12' CONTINUOUS BELT TABLE, FPZ VACUUM PUMP, CONTROLS, (8) SUCTION CUPS, S/N: 825579

1995 KOMO VR804TT TWIN HEAD CNC ROUTER, 4'X8' VACUUM TABLE, 2013 TRAVAINI TR0400S-1A 25 HP VACUUM PUMP, GE FANUC SERIES O-M CONTROLS, S/N: 1485895

1996 KOMO VR512 TWIN HEAD CNC ROUTER, 5'X12' VACUUM TABLE, QUINCY QSVB25 25 HP VACUUM PUMP, GE FANUC SERIES O-M CONTROLS, S/N: 1821096

ROLAND EGX-600 CNC ENGRAVER, 16"X24" TABLE, DUST COLLECTOR, ENGRAVE LAB V9 SOFTWARE, S/N: ZBR1598

JET JTM-1 2 HP VERTICAL MILLING MACHINE, 9"X42" POWER TABLE, VISE, MITUTOYO DIGITAL READOUT

CUSTOM BUILT ACRYLIC BENDING STATION W/(5) 96" ADJUSTABLE WATER COOLED PLATOONS, MTA CHILLER

APPROX. 10'X28"X7' NATURAL GAS THERMOFORMING OVEN, HONEYWELL CONTROLS, RACKS, RAIL

GENERAL PLASTICS MACHINES 122PC CUSTOM BUILT VACUUMFORM/PRESSURE FORMER THERMOFORMING MACHINE, 48"X72" TOP & BOTTOM PLATOON, 26" VERTICAL DRAW, BECKER VACUUM PUMP, (4) NEGATIVE AIR RECEIVING TANKS, (3) MAIN CYLINDERS, QUARTZ UP & LOWER 24 STATION TOUCH SCREEN CONTROLS, UTICOR PGI 100 PLC TOUCH SCREEN, ENTIRE STRUCTURE HOLDS 30LB NEGATIVE AIR PRESSURE, S/N: 1201

ARTEC EVA-S 3-D HAND-HELD SCANNER

ARTEC EVA-M 3-D HAND-HELD SCANNER

2016 ATLAS COPCO GA22FF 30 HP VSD ROTARY SCREW AIR CENTER, RUN HRS:7,393, LOAD HRS:1,551, S/N: CAI92290049

CHAMPION HORIZONTAL TANK AIR COMPRESSOR

2014 KALA MISTRAL 1650 65" COLD LAMINATOR, S/N: K145231008

2010 SEAL 62 PRO D 62" LAMINATOR, S/N: 64138-00371

AIR SENTRY 208DCF 10 HP, 6-BAG DUST COLLECTOR

2014 LAGUNA MDC3560 3 HP CYCLONE DUST COLLECTOR

CR CLARKE 900/1,250 WATT POWER SUPPLY W/(4) 12,500 LB, 48" HEATERS W/TOP & BOTTOM HEAT CONTROL

2011 DIMPLEX KOOLANT KOOLERS JH1000-21-V CHILLER

INSTAPAK 2-PART FOAM PACKAGE SYSTEM

SPEEDY PACKER AIR PACKAGING SYSTEM

INFRATECH W-3024 3,000 WATT DRYER

2000 HENDRICK HP3 11'X18' VERTICAL PANEL SAW, S/N: 2186

HENDRICK 9'X11' VERTICAL PANEL SAW, S/N: 1610

DELTA 36-L300 10" LEFT TILT UNISAW TABLE SAW W/FENCE

LAGUNA 1412 14" VERTICAL BANDSAW

DELTA 28-203 14" VERTICAL BANDSAW

1996 CR CLARKE 1550 DIAMOND EDGE POLISHER, S/N: 1550090

(2) EDGE FINISHER COMPANY EF-2000 EDGE POLISHERS,

S/N'S: 202132 & N/A

DELTA DJ-20 8" JOINTER

POWERMATIC 54A 6" JOINTER

(3) ONSRUD 3025 5 HP, 30" PIN ROUTERS, FOOT CONTROLS

(2) DELTA 12" PLANERS ON STANDS

(2) DOUBLE END PEDESTAL MOUNTED BUFFERS

DAYTON 20" DRILL PRESS W/STAND

DELTA 17-900 DRILL PRESS

1/4 HP FLEX SHAFT BUFFER

ULINE H959 SEMI AUTOMATIC POLY BANDER

(3) 5'X10" STEEL FRAMED LAYOUT TABLES ON CASTERS

(2) 4'X8" STEEL FRAMED LAYOUT TABLES ON CASTERS

(3) 4'X8" STEEL FRAMED LAYOUT TABLES (NO CASTERS)

(3) OXY/ACETYLENE SETS

(2) MULTITON 5,500 LB CAP. PALLET JACKS

ASSORTED TOOLS & INVENTORY TO INCLUDE: CHOP SAWS, HOLE SAWS, CARTS, CLAMPS, TABLES, ROUTERS, ROTARY TABLE, BELT/DISC SANDER, FANS, POWER TOOLS, FLAMMABLE CABINETS, JOINTERS, SANDERS, TOOLBOXES & MISC. SHOP SUPPLIES, PALLET & CANTILEVER RACKING, STEEL CARTS, SHIPPING SUPPLIES, BOXES, SCALE, SMALL PAINT BOOTH, SANDBLASTER, PALLET JACK, DEWALT CHOP SAW, BENCH TOP BREAK, CARTS, BOX STAPLER, MATERIAL RACK, MEZZANINE W/ASSORTED ACRYLICS, PROPANE CAGE, 40' CONTAINER & MUCH MORE!



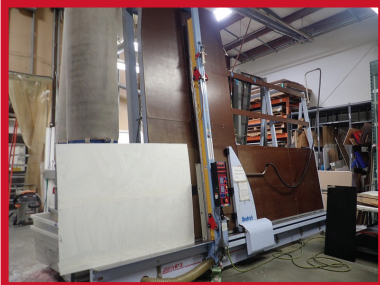
ONLINE ONLY - TACOMA, WA



2014 EPSON SURE COLOR S70670



GENERAL PLASTICS MACHINES 122PC



ROLLING STOCK

2012 HYSTER H50FT 4,800 LB CAP. CUSHION TIRED FORKLIFT, 3-STAGE MAST, SIDE SHIFT, FORK POSITIONERS, MONOTROL, PROPANE, HOUR METER READS: 774, S/N: L177V11364K

2005 ISUZU NPR 14' S/A BOX VAN, DIESEL, AUTO, ODOMETER READS: 160,550, S/N: 4KLB4B1N65J803651

2000 CHEVROLET 1500 PICKUP TRUCK, ODOMETER READS: 103,311, S/N: 1GCEC14V64E149116

2000 DODGE CARAVAN CARGO VAN, ODOMETER READS: 157,961

TERMS AND CONDITIONS

15% BUYERS PREMIUM ON ALL ONLINE PURCHASES

PAYMENT: FULL PAYMENT MUST BE MADE BY 4 PM, FEBRUARY 6TH. CASH, CASHIERS CHECK, WIRE TRANSFER, MASTERCARD OR VISA ONLY. CHECKS ARE ACCEPTED ONLY WITH BANK LETTER OF GUARANTEE.

REMOVAL: CUSTOMERS ARE RESPONSIBLE FOR REMOVING THEIR ITEMS FROM THE AUCTION SITE. ALL ITEMS MUST BE REMOVED NO LATER THAN 4:00 PM, THURSDAY FEBRUARY 13TH.

REMOVAL HOURS: 8:00 AM - 4:00 PM, FRIDAY, FEBRUARY 7TH THROUGH THURSDAY, FEBRUARY 13TH. NO WEEKEND REMOVAL.

WARRANTY DISCLAIMER: ALL SALES ARE FINAL. ALL ITEMS ARE BEING SOLD "AS IS, WHERE IS." WITH ALL FAULTS AND WITHOUT ANY WARRANTIES AS TO MERCHANTABILITY OF FITNESS FOR A PARTICULAR PURPOSE. THE PRINCIPAL, THE AUCTIONEER, THE ADVERTISING COORDINATOR, AND ANY OF THEIR AGENTS MAKE NO EXPRESS OR IMPLIED WARRANTIES OF ANY TYPE. COMPLETE TERMS AND CONDITIONS OF SALE WILL BE AVAILABLE AT THE TIME OF SALE.



ONLINE AUCTION

3510 S. Pine St., Tacoma, WA 98409



**2011 FUJI ACUITY
ADVANCE HS-WIO**



James G. Murphy Co.

Commercial & Industrial Auctioneers
P.O. Box 82160, Kenmore, WA 98028

PRESORTED
FIRST CLASS MAIL
U.S. POSTAGE
PAID
SEATTLE, WA
PERMIT NO. 963

**NO MINIMUMS
NO RESERVES**



James G. Murphy Co.

Commercial & Industrial Auctioneers

PUBLIC AUCTION



2015 FUJI ACUITY LED 1600

 **KELTECH™**
Innovative Solutions for Creative Ideas

KELTECH - ONLINE ONLY

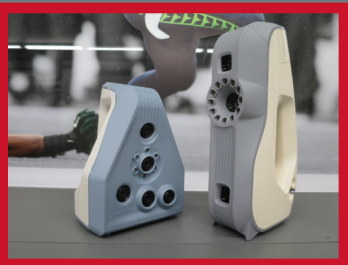
Acrylic & Printing Shop Equipment

Start Date: 11:00 AM | Thursday - January 30

End Date: 11:00 AM | Thursday - February 6

Preview 8:00 AM to 4:00 PM | Wednesday, February 5

Location: 3510 S. Pine St., Tacoma, WA 98409



FOR MORE INFORMATION GO TO MURPHYAUCTION.COM • PHONE 425.486.1246