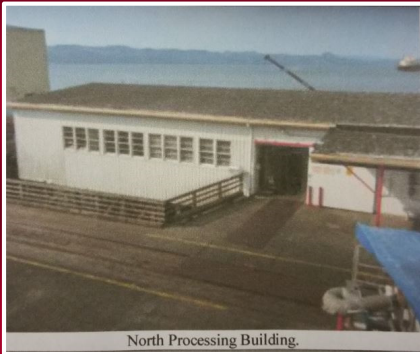


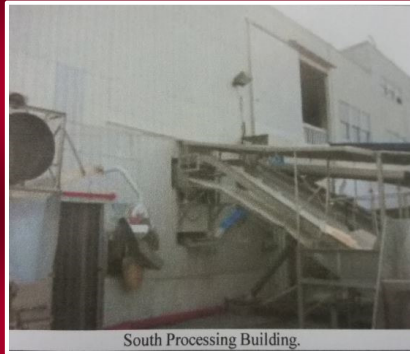


1 9<sup>th</sup> St  
Astoria, OR 97103

- Multi-Purpose Processing Facility
- 4 Buildings totaling 50,076 SqFt
  - 28,768 SqFt South Processing
  - 19,186 SqFt North Processing
  - 934 SqFt Ice House
  - 1,188 SqFt Cooler
- 1.61 Acres
- Ice House and Cooler
- Cold Storage
- Stone Rip-Rap Supports
- 29,400 SqFt Boat Dock/Deck
  - Roughly 250 feet in length



North Processing Building.



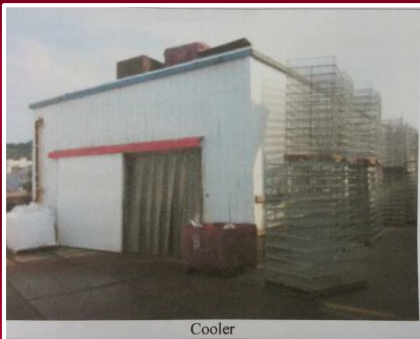
South Processing Building.



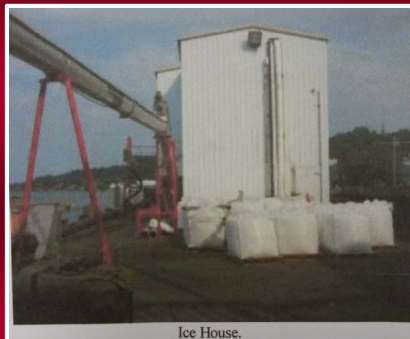
Boat Dock.



Riverwalk and trolley tracks.



Cooler



Ice House.



South - 2<sup>nd</sup> Floor Cold Storage/Blast Freezing.



South - 1<sup>st</sup> Floor machinery.



James G Murphy Co  
Commercial Auctioneers

Office (425) 486 1246

Fax (425) 483 8247

[www.murphyauction.com](http://www.murphyauction.com)