



**NO MINIMUMS - NO RESERVES**



# PUBLIC AUCTION

**2007 CAT D10N**

2007 Rebuild  
Visit [Murphyauction.com](http://Murphyauction.com)  
For Service Records



**ANDERSON ROCK & DEMOLITION PIT - ONLINE AUCTION**

MINING EQUIPMENT & ROLLING STOCK

START DATE: 11AM | OCT. 21

END DATE: 11AM | OCT. 28

PREVIEW: 8AM-4PM | OCT. 27

LOCATION: 41 ROCKY TOP RD., YAKIMA, WA 98908

**BID ONLINE**  
**425.486.1246**



James G. Murphy Co.  
[murphyauction.com](http://murphyauction.com)



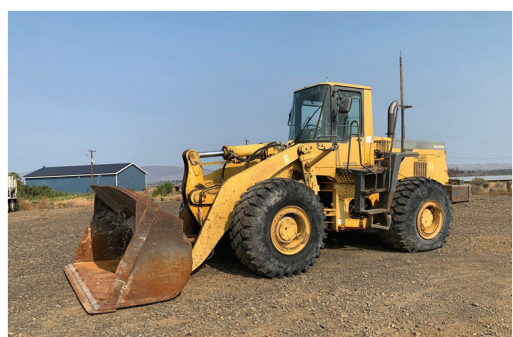
1990 CAT D10N



1992 HITACHI EX1100



2004 KOBELCO SK160LC



1998 KOMATSU WA450-3MC



1999 KOMATSU WA450-3MC



1990 CAT 816B

**James G. Murphy Co.**

Commercial & Industrial Auctioneers



1.800.426.3008 - 425.486.1246

[murphyauction.com](http://murphyauction.com)

# NO MINIMUMS - NO RESERVES



1997 KENWORTH T800B



1989 KENWORTH T600A



2005 TRINITY 36" BELT TRI/A



1999 EXTEC SCREEN MOBILE



GALION 90



1980 TEREX 33-05B



1979 TEREX 33-05B



EUCLID R22

## HIGHLIGHTED ITEMS:

**2007 CAT D10N** CRAWLER TRACTOR, S/U BLADE W/TILT, A/C CAB, 4 BBL MULTI SHANK RIPPER (2007 REBUILD), S/N: 2YD75536

**1990 CAT D10N** CRAWLER TRACTOR, U/BLADE W/TILT, A/C CAB, 4 BBL SINGLE SHANK RIPPER, PIN PULLER, HOUR METER READS: 42,085, S/N: 2YD01620

**1996 DRESSER TD9H** CRAWLER TRACTOR, 6 WAY BLADE, CANOPY W/SWEEPS, HITCH, HOUR METER READS: 7,524, S/N: 4720002P046133

**1999 KOMATSU WA450-3MC** WHEEL LOADER, GP BUCKET, A/C CAB, 26.5R25, HOUR METER READS: 14,025, S/N: A31071

**1998 KOMATSU WA450-3** WHEEL LOADER, Q/C BUCKET, A/C CAB, 26.5X25, 3RD VALVE, HOUR METER READS: 22,052, S/N: 53132

**1995 KOMATSU WA450-2** WHEEL LOADER, GP BUCKET, A/C CAB, 26.5R25 \*ENGINE HAS BLOW BY, HOUR METER READS: 14,754, S/N: A26046

**KOMATSU WA40-3** WHEEL LOADER, BUCKET, CANOPY, 15.5/60X18 \*NO HYDRAULIC PUMP, HOUR METER READS: 5,340, S/N: 10360

**KAWASAKI 110Z II** WHEEL LOADER, BUCKET, CAB, 35/65X33 \*STARTS DOES NOT TRAVEL, S/N: 110Z2-0377

**1979 CAT 977L** CRAWLER LOADER, BUCKET, CANOPY W/SWEEPS, HYSTER WINCH, 3RD VALVE, HOUR METER READS: 4,032, S/N: 14X1399

**2004 KOBELCO SK160LC** HYDRAULIC EXCAVATOR, 42" DIGGING BUCKET, HYDRAULIC THUMB, GUARDING, HOUR METER READS: 8,415, S/N: YM03-U0816

**2002 JOHN DEERE 330C LC** HYDRAULIC EXCAVATOR, PIN GRABBER, PSM 72" DITCHING BUCKET, HYDRAULIC THUMB, 10' 6" STICK, A/C CAB \*BAD HEAD GASKET, HOUR METER READS: 12,709, S/N: FF330CX082236

**1988 JOHN DEERE 892D LC** HYDRAULIC EXCAVATOR, Q/C 44" DIGGING BUCKET, HYDRAULIC THUMB, 10' 3" STICK, HOUR METER READS: 15,801, S/N: CK892DL005115

**1992 HITACHI EX1100** HYDRAULIC EXCAVATOR, CUMMINS K19, 60" DIGGING BUCKET, 11' STICK, 9.1 METER BOOM, 28" DBG, A/C CAB, HOUR METER READS: 19,864, S/N: 178-1029

**1994 HITACHI EX700** HYDRAULIC EXCAVATOR, CUMMINS, 80" V-DIGGING BUCKET, 9'6" STICK, 25" DBG, A/C CAB, S/N: 172-1040

**1965 CAT 12E** MOTOR GRADER, SCARIFIER, 12' MOLDBOARD, SIDE SHIFT, CAB, 14.00X24, S/N: 99E12969

**1997 KENWORTH T800B** TRI/A DUMP TRUCK, DETROIT SERIES 60, RTX14710C-10 SPD, RT40-145P-40,000 REARS, BLOCK BEAM SUSPENSION, DROP AXLE, 15' STEEL BOX, PLUMBED FOR PUP, ODOMETER READS: 990,323, S/N: 1NKDXROX9VR757026

**1989 KENWORTH T600A** T/A ROLL OFF TRUCK, CUMMINS BIG CAM 315, 9 SPD, DS402-40,000 REARS W/3.36 RATIO, 12,000 FRONT, 20' CHAIN DRIVE W/TARP SYSTEM, ODOMETER READS: 629,609, S/N: 1XKAD29X8KJ516466

**CAT 769B** ROCK TRUCK, 18.00X33 \*NO BRAKES, ODOMETER READS: 75,865

**1980 TEREX 33-05B** 30 TON ROCK TRUCK, DETROIT 12V71, 18.00X25, ROCK KNOCKERS, HOUR METER READS: 8,948, S/N: 69032

**1979 TEREX 33-05B** 30 TON ROCK TRUCK, DETROIT 12V71, 18.00X25, ROCK KNOCKERS, HEATED BOX \*RUNS, WILL NOT TRAVEL, HOUR METER READS: 1,432, S/N: 67694

**EUCLID R22** 22 TON ROCK TRUCK, CUMMINS 6 CYL, 16.00X25, TAIL GATE, HEATED BOX \*RUNS, WILL NOT TRAVEL, HOUR METER READS: 7,667

**1990 CAT 816B** SHEEPS FOOT COMPACTOR, 3306 ENGINE, BLADE, A/C CAB \*RUNS, WILL NOT TRAVEL, S/N: 15Z1135

**1974 RAYGO RASCAL** VIBRATORY SMOOTH DRUM ROLLER, DETROIT 4-53, 100" DRUM, CANOPY, 24.5X32, S/N: 03G824

**1976 HYSTER 350A-D** TANDEM STATIC SMOOTH DRUM ROLLER, 4 CYL, DIESEL, 54" DRUMS \*NO RADIATOR, S/N: B89C-3643W

**GALION 90** 9 TON ROUGH TERRAIN CRANE, 6 CYL (GAS), 3 SECTION BOOM, 17.5X25, HOUR METER READS: 4,052

**SELICK** 8,000 LB ROUGH TERRAIN CRANE, 4 CYL (GAS), 108" 2 STAGE MAST W/SIDE SHIFT, S/N: 639108801-ST

**1999 EXTEC** SCREEN MOBILE 6' X 12' PORTABLE SCREENING PLANT, JOHN DEERE 4 CYL, GRIZZLEY, S/A CHASSIS, HOUR METER READS: 2,330, S/N: 5859

**2011 NEW HOLLAND T4050V** 95HP MFWD ORCHARD TRACTOR, (3) REMOTE PTO, 3PT, HOUR METER READS: 6,012, S/N: ZAJE14816

**2007 JOHN DEERE 5425N** 81 HP 2WD ORCHARD TRACTOR, (3) REMOTES, PTO, 3PT, HOUR METER READS: 7,574, S/N: LV5425N348075

**CLEMENS EL50** LEAF REMOVER W/CONTROLS, S/N: 32

**CROPLANDS QUANTUM MIST** 400 GALLON T/A PULL BEHIND SPRAYER, AUX, HYDRAULIC UNIT, SS TANK, (6) SARDI FANS, CONTROLS

**2005 TRINITY** TRI/A BELT TRAILER, SPRING SUSPENSION, TARP SYSTEM, POWER UNIT, S/N: 1T9SC49325B656047

**ONAN** 60 KW JOBSITE PORTABLE GENERATOR, ALLIS CHALMERS 2900ML-6 CYL, FUEL TANK, SWITCH GEAR, S/N: B760105484

**1988 KOMATSU D355-5** CRAWLER TRACTOR, U/BLADE W/TILT, A/C CAB, 4 BBL SINGLE SHANK RIPPER (NON OPERATIONAL, TRACK FRAME & FINAL DRIVE DISASSEMBLED), S/N: 12852

**HITACHI EX1100** 96" DIGGING BUCKET

**36", 44" & 64" DIGGING BUCKETS**

**JRB** Q/C LOADER FORKS

**12' EXCAVATOR STICK**



James G. Murphy Co.  
[murphyauction.com](http://murphyauction.com)  
 425.486.1246

# YAKIMA, WA

**1994 HITACHI EX700**



**CAT 769B**



**1995 KOMATSU WA450-2**



**1988 JOHN DEERE 892D LC**



**1979 CAT 977L**



**1996 DRESSER TD9H**



**1965 CAT 12E**



**2011 NEW HOLLAND T4050V**

## TERMS AND CONDITIONS

13% BUYERS PREMIUM ON ALL PURCHASES

**PAYMENT:** FULL PAYMENT MUST BE MADE BY 5 PM, WEDNESDAY, OCTOBER 28TH. PAYMENT MUST BE MADE BY ONLINE CREDIT CARD OR WIRE TRANSFER ONLY, NO IN-PERSON PAYMENTS (DUE TO COVID19). AFTER THE AUCTION CLOSSES & YOU RECEIVE YOUR EMAILED INVOICE, PLEASE REPLY AND WE WILL CHARGE YOUR CARD ON FILE. TO PAY ONLINE GO TO MURPHYAUCTION.COM CLICK ON THE ONLINE BIDDING DROPDOWN MENU AND GO DOWN TO MAKE PAYMENT.

**REMOVAL:** CUSTOMERS ARE RESPONSIBLE FOR REMOVING THEIR ITEMS FROM THE AUCTION SITE. ALL ITEMS MUST BE REMOVED NO LATER THAN 4:00 PM WEDNESDAY, NOVEMBER 4TH.

**REMOVAL HOURS:** 8:00 AM – 4:00 PM, THURSDAY, OCTOBER 29TH THROUGH WEDNESDAY, NOVEMBER 4TH.  
NO WEEKEND REMOVAL.

**WARRANTY DISCLAIMER:** ALL SALES ARE FINAL. ALL ITEMS ARE BEING SOLD "AS IS, WHERE IS," WITH ALL FAULTS AND WITHOUT ANY WARRANTIES AS TO MERCHANTABILITY OF FITNESS FOR A PARTICULAR PURPOSE. THE PRINCIPAL/ SELLER, THE AUCTIONEER, THE ADVERTISING COORDINATOR, AND ANY OF THEIR AGENTS MAKE NO EXPRESS OR IMPLIED WARRANTIES OF ANY TYPE.

COMPLETE TERMS AND CONDITIONS OF SALE WILL BE AVAILABLE AT THE TIME OF SALE.

**1.800.426.3008 - 425.486.1246 - [murphyauction.com](http://murphyauction.com)**

# PUBLIC AUCTION

START DATE: 11AM | OCTOBER 21    END DATE: 11AM | OCTOBER 28

**41 ROCKY TOP RD., YAKIMA, WA 98908**



2002 JOHN DEERE 330C LC



**James G. Murphy Co.**

Commercial & Industrial Auctioneers  
P.O. Box 82160, Kenmore, WA 98028

PRESORTED  
FIRST CLASS MAIL  
U.S. POSTAGE  
PAID  
SEATTLE, WA  
PERMIT NO. 963



**REGISTER  
TO BID @  
MURPHYAUCTION.COM**

**NO MINIMUMS**



**James G. Murphy Co.**

Commercial & Industrial Auctioneers

**NO RESERVES**

**PUBLIC AUCTION**



**ANDERSON ROCK &  
DEMOLITION PIT  
ONLINE ONLY**

**Start Date: 11:00 AM | Wednesday - October 21**

**End Date: 11:00 AM | Wednesday - October 28**

**Preview 8:00 AM to 4:00 PM | Tuesday, October 27**

**41 Rocky Top Rd., Yakima, WA 98908**

**FOR MORE INFORMATION GO TO MURPHYAUCTION.COM • PHONE 425.486.1246**