



425.486.1246 - James G. Murphy Co. - MURPHYAUCTION.COM



PUBLIC AUCTION

9AM - SATURDAY - DECEMBER 7

PREVIEW 8-5PM, FRIDAY, DECEMBER 6

18226 68TH AVE NE., KENMORE, WA

HEAVY EQUIPMENT, CONTRACTORS EQUIPMENT & VEHICLES



MURPHYAUCTION.COM
4 2 5 - 4 8 6 - 1 2 4 6



>>>>> BID LIVE OR BID ONLINE <<<<<

1.800.426.3008 - 425.486.1246 - MURPHYAUCTION.COM

NO MINIMUMS - NO RESERVES



1988 CAT IT18B



1980 CAT 980C



2007 JOHN DEERE 50D



1979 CASE/DROTT 5550C



2005 CAT 302.5



2006 JOHN DEERE 50D



2003 DYNAPAC CC142



1997 HAMM HD12



2013 BOBCAT E32 M



1973 P&H 440TC



2006 HITACHI ZX330LC-3



2012 JOHN DEERE 35D

1.800.426.3008 - 425.486.1246 - murphyauction.com

NO MINIMUMS - NO RESERVES



2004 JOHN DEERE 4410



2004 JOHN DEERE 4115



2004 JOHN DEERE 4115



2010 HYUNDAI 35L-7A



1992 CLARK C500-YS80



1996 HYSTER H190XL



SELICK SD-60



NISSAN 15500



2017 JOHN DEERE 312GR



HARPER DEWEZE



2001 KUBOTA B7500D



2000 SKYJACK SJ3/3220

1.800.426.3008 - 425.486.1246 - murphyauction.com

NO MINIMUMS - NO RESERVES



2000 PETERBILT 357



2007 FREIGHTLINER COLUMBIA



2006 FREIGHTLINER COLUMBIA



1997 FORD CARGO



2005 INT'L 4300



1997 ISUZU NPR



1989 FORD L9000



2000 INT'L 4700



2014 INT'L PRO STAR +



2008 FORD F250



2002 FREIGHTLINER FL70



2006 FREIGHTLINER M2

1.800.426.3008 - 425.486.1246 - murphyauction.com

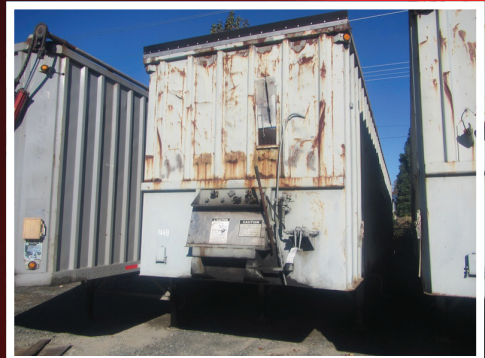
NO MINIMUMS - NO RESERVES



2008 LEACH



2002 GREAT DANE



1996 ATSLT-49.5-3



1999 GREAT DANE 7011TZ-145



1999 TRAILMOBILE



2008 TRAIL MAX TRD-54-T



2008 WELLS CARGO CW1422-102



2003 TRAIL KING TK12U



2007 IMCO 53S102W



2002 WABASH



2000 UTILITY VS2R



2006 NATIONAL

1.800.426.3008 - 425.486.1246 - murphyauction.com

NO MINIMUMS - NO RESERVES

19+ TRAILERS!

2003 TRAIL KING TK12U 16' 14,500 LB GVWR, 6,000 LB GAWR
T/A EQUIPMENT TRAILER
2000 MORGAN T/A 17'6" TILTBED EQUIPMENT TRAILER
2007 WELLS CARGO TCS81 5' X 8' S/A ENCLOSED UTILITY
TRAILER
1999 GREAT DANE 7011TZ-145 45' T/A REFRIGERATED VAN
TRAILER
GREAT DANE 41' T/A REFRIGERATED VAN TRAILER
1998 UTILITY TRAILER VS2R 32' T/A REFRIGERATED VAN
TRAILER
(2)1997 UTILITY VS2R 48' T/A REFRIGERATED VAN TRAILERS
1997 WABASH SA-102.3CW 38' 68,000 GVWR T/A VAN TRAILER
1995 TRAILMOBILE G1JA-1UAW 45' 65,000 GVWR T/A VAN
TRAILER
(2)1992 UTILITY VS2D 48' 65,000 GVWR T/A VAN TRAILERS
(2)1990 FRUEHAUF FBX-F2-48 48' 68,000 GVWR T/A VAN
TRAILERS
1980 COMET 58025997 S/A 28 VAN TRAILER
1995 ALLOY ATSLT-49.5-3 49' 86,000 GVWR, 118 CU YD
TRI-AXLE LIVE FLOOR TRAILER
1981 ALLOY AISLT-49.5-3 49' 86,000 GVWR 123 CU YD
TRI-AXLE LIVE FLOOR TRAILER
1995 GENERAC SD25/16470 25 KW BACKUP GENERATOR
1999 PACIFIC TEK T/A VACUUM TRAILER
2013 CAT XQ100-6 TRAILER MOUNTED GENERATOR
2013 MULTIQUIP DH-0750J TRAILER MOUNTED GENERATOR
1989 LEROI Q185DP-E 185 CFM TRAILER MOUNTED AIR
COMPRESSOR
MARLOW 8F3EL 8" DIA TRASH PUMP
2003 NATIONAL SIGNAL 15529 TRAILER MOUNTED SOLAR
POWERED MESSAGE BOARD
2003 NATIONAL SIGNAL 15542 TRAILER MOUNTED SOLAR
POWERED MESSAGE BOARD
ALLMAND BROS SE 25 3FS TRAILER MOUNTED ARROW
BOARD
(2)1992 GARLOCK 900 T/A TAR KETTLE TRAILER
1981 REEVES 550 T/A TAR KETTLE TRAILER
1955 TIMPTE 553 S/A 23' POLE TRAILER
1989 EVERGREEN OFFICE S/A 24' JOBSITE TRAILER
TENNANT 355 60" RIDE ON SWEEPER
1998 CLARK TMG15S 3,000 LB HRT 36V ELECTRIC FORKLIFT
(2)1999 CLARK TMG15S 3,000 LB HRT 36V ELECTRIC
FORKLIFTS
1995 BAYLINER 2452 24.5' CABIN CRUISER BOAT
2013 POLARIS SPORTSMAN 4X4 ATV 850 TWIN EFI 2 RANGE,
HOUR METER READS: 54
(30+) TRUCKS & SUV'S
(35+) CARS
(9) MOTORCYCLES



ONLINE BIDDING
AVAILABLE



2013 POLARIS SPORTSMAN



2010 ZACKY CUSTOM



2003 HARLEY DAVIDSON ROAD GLIDE



2018 SUBARU FORESTER



2006 CADILLAC XLR



2010 BMW 750



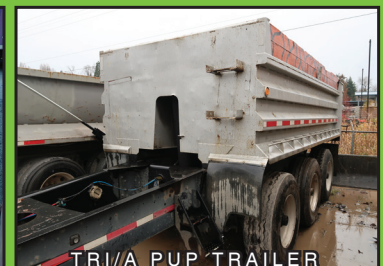
2016 CHEV 2500 HD



2012 DODGE 1500



(2) ALLMAND NIGHT-LITE PROS



TRI/A PUP TRAILER

1.800.426.3008 - 425.486.1246 - murphyauction.com

NO MINIMUMS - NO RESERVES



2003 NATIONAL SIGNAL 15529



1996 VERMEER 1250BO



1999 SPARTAN GA41M-2142



1992 FORD L8000



TRAIL KING TK12U



1993 STURDYWELD DA48SA-FRS

TERMS AND CONDITIONS

NO BUYERS PREMIUM ON HEAVY EQUIPMENT & VEHICLES.
10% BUYERS PREMIUM ON SMALL EQUIPMENT, TOOLS & MISC.
5% ADDITIONAL BUYERS PREMIUM FOR ALL ONLINE PURCHASES.

ALL SALES ARE FINAL UPON AWARD OF BID BY AUCTIONEER.
DUE TO SAFETY AND INSURANCE REASONS CHILDREN UNDER 12 CANNOT BE ADMITTED.

TITLED VEHICLES: WASHINGTON STATE RESIDENTS, WHO ARE NOT MOTOR VEHICLE DEALERS, MUST PAY WASHINGTON STATE SALES TAX PLUS ANY APPLICABLE TITLE OR LICENSE FEES ON THE PURCHASE OF TITLED VEHICLES. OUT OF STATE RESIDENTS MUST MEET ALL REQUIREMENTS TO BE EXEMPT FROM SALES TAX.

(GENERAL SALES TAX IS 10%)

A \$300 CASH OR 25% CREDIT CARD DEPOSIT IS REQUIRED UPON AWARD OF BID ON ALL CARS, PICKUPS & VANS.

AUCTIONEERS NOTE: A \$100 NEGOTIABLE VEHICLE DOCUMENTARY SERVICE FEE WILL BE CHARGED ON THE PURCHASE OF EVERY TITLED ITEM INCLUDING CARS, TRUCKS, VANS, & TRAILERS.

PAYMENT: FULL PAYMENT MUST BE MADE BY NO LATER THAN 5 P.M., TUESDAY, DECEMBER 10TH. A 25% DEPOSIT IS REQUIRED BY THE CLOSE OF BUSINESS, AUCTION DAY. CASH, CASHIER'S CHECK, VISA & MASTERCARDS ONLY. PERSONAL OR COMPANY CHECKS ACCEPTED ONLY WITH BANK LETTER OF GUARANTEE.

REMOVAL: THERE WILL BE NO REMOVAL DURING THE AUCTION UNLESS OTHERWISE ANNOUNCED BY THE AUCTIONEER. NO PURCHASES MAY BE REMOVED UNTIL ALL PURCHASES ARE PAID FOR. ALL ITEMS MUST BE REMOVED NO LATER THAN 5:00 P.M., THURSDAY, DECEMBER 12TH.

WARRANTY DISCLAIMER: ALL SALES ARE FINAL. ALL ITEMS ARE BEING SOLD "AS IS, WHERE IS", WITH ALL FAULTS AND WITHOUT ANY WARRANTIES AS TO MERCHANTABILITY OF FITNESS FOR A PARTICULAR PURPOSE.

COMPLETE TERMS AND CONDITIONS OF SALE WILL BE AVAILABLE AT THE TIME OF SALE.



TOOLS AND INVENTORY - ONLINE ONLY

START DATE: 11:00 AM | THURSDAY - DECEMBER 5

END DATE: 11:00 AM | TUESDAY - DECEMBER 10

18226 68TH AVENUE NE., KENMORE, WA 98028



HAND TOOLS, POWER TOOLS,
LUMBER, ATTACHMENTS,
CONSTRUCTION SUPPORT EQUIPMENT,
PAVER BLOCKS AND MUCH MORE!



PREVIEW 8:00 AM TO 5:00 PM | FRIDAY, DECEMBER 6



1.800.426.3008 - 425.486.1246 - murphyauction.com

PUBLIC AUCTION - SAT, DECEMBER 7



2009 PETERBILT 367



James G. Murphy Co.

Commercial & Industrial Auctioneers
P.O. Box 82160, Kenmore, WA 98028

PRESORTED
FIRST CLASS MAIL
U.S. POSTAGE
PAID
SEATTLE, WA
PERMIT NO. 963



425.486.1246
murphyauction.com



James G. Murphy Co.

Commercial & Industrial Auctioneers



PUBLIC AUCTION

HEAVY EQUIPMENT, CONTRACTORS EQUIPMENT & VEHICLES

9AM - SATURDAY - DECEMBER 7

PREVIEW 8-5PM, FRIDAY, DECEMBER 6

18226 68TH AVE NE., KENMORE, WA

>>>>> BID LIVE OR BID ONLINE <<<<<

1.800.426.3008 - 425.486.1246 - murphyauction.com